

Madison, Wisconsin



FEE TITLE



TLE



EXISTING ROW (TYP)



FOUND IP

KINSMAN BLVD

	NUMBER	DIRECTION	DISTANCE
ROW	L1	N 78°11'30" W	17.66 FT
	L2	N 88°08'34" W	92.99 FT
	L3	S 88°16'18" W	38.76 FT
	L4	N 89°51'19" W	64.85 FT
	L5	N 00°04'36" W	8.22 FT
EASEMENT	C1	CENTRAL ANGLE	RADIUS
		43°31'53"	25.00 FT
	CHORD	S 66°22'09" E	18.54 FT
	L6	S 00°09'10" W	3.00 FT
	L7	S 89°51'19" E	64.85 FT
	L8	N 82°52'17" E	31.86 FT
	L9	N 88°16'18" E	7.14 FT
	L10	S 88°08'34" E	18.74 FT
	L11	S 73°34'26" E	15.90 FT
	L12	S 88°08'34" E	59.44 FT
	L13	N 88°37'38" E	16.84 FT

RELOCATION ORDER APPROVED BY THE COMMON COUNCIL

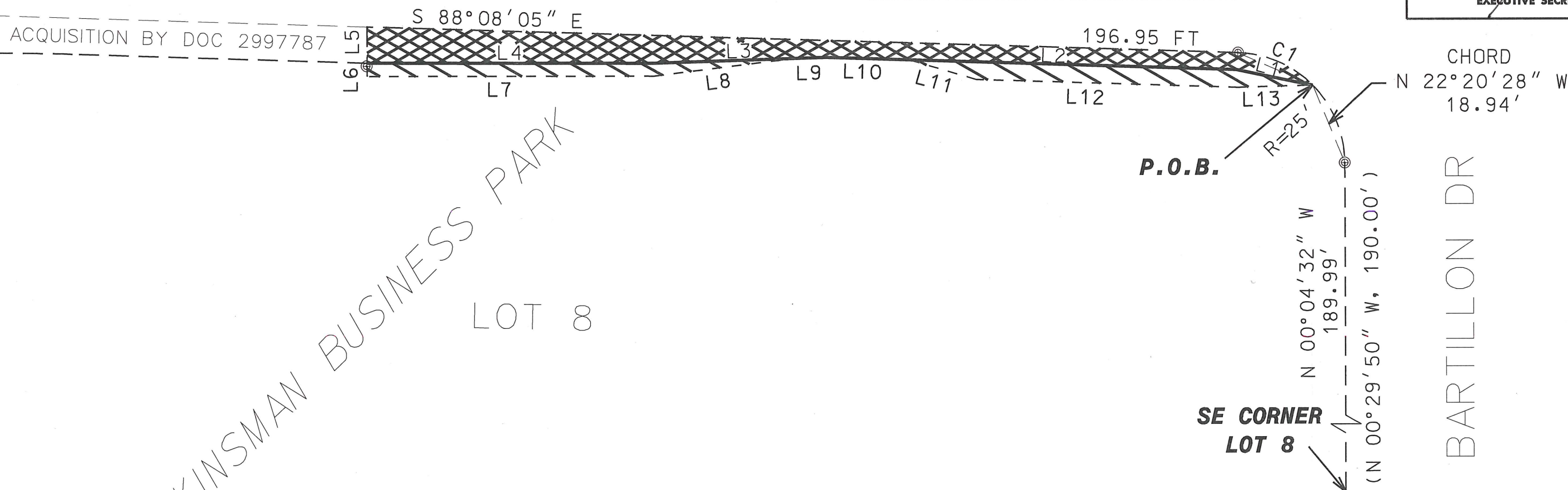
Maibeth Witzel-Behl 1-31-12
CITY CLERK DATE

RELOCATION ORDER APPROVED BY THE BOARD OF PUBLIC WORKS:

[Signature] 1/31/12
EXECUTIVE SECRETARY DATE

RELOCATION ORDER APPROVED BY THE PLAN COMMISSION:

[Signature] 1/31/12
EXECUTIVE SECRETARY DATE



SCHEDULE OF INTERESTS REQUIRED

PARCEL #	OWNER NAME	FEE AREA REQUIRED	EASEMENT AREA REQUIRED	RECORDED DOCUMENT NO.
	BRAGER FAMILY PARTNERSHIP, LLP	1079.47 SQ FT 0.025 ACRES	543.18 SQ FT 0.012 ACRES	

REVISIONS

CITY OF MADISON RELOCATION ORDER

"PLAT OF LAND INTERESTS REQUIRED FOR THE CONSTRUCTION AND MAINTENANCE OF IMPROVEMENTS FOR PUBLIC SIDEWALK ADJACENT TO BARTILLON DR & KINSMAN BLVD", BEING PART OF LOT 8, KINSMAN BUSINESS PARK, LOCATED IN THE SOUTH-WEST 1/4 OF SECTION 28, TOWN 8 NORTH, RANGE 10 EAST, CITY OF MADISON, DANE COUNTY, WISCONSIN.

CITY ENGINEERING DIVISION
PROJECT NO. 53W1252
REAL ESTATE PROJECT NO. 9671

MAY 11, 2011 djs

M:\DESIGN\STREETS\DGN\ 53W1252\Kineman2d.dgn

SCALE: 1"=25 FEET

Dane Co PLAT I.D. 653