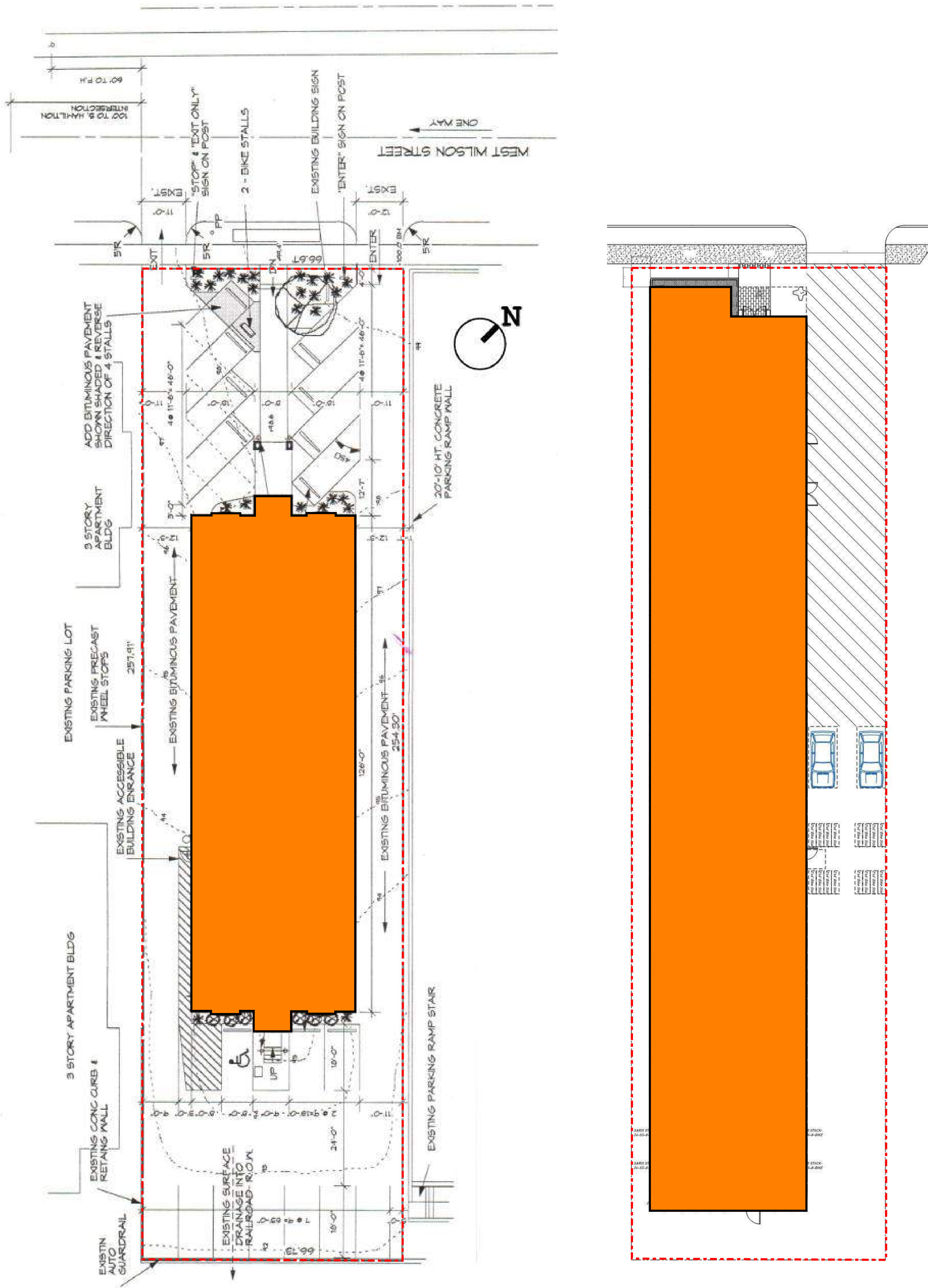


SITE LOCATION MAP

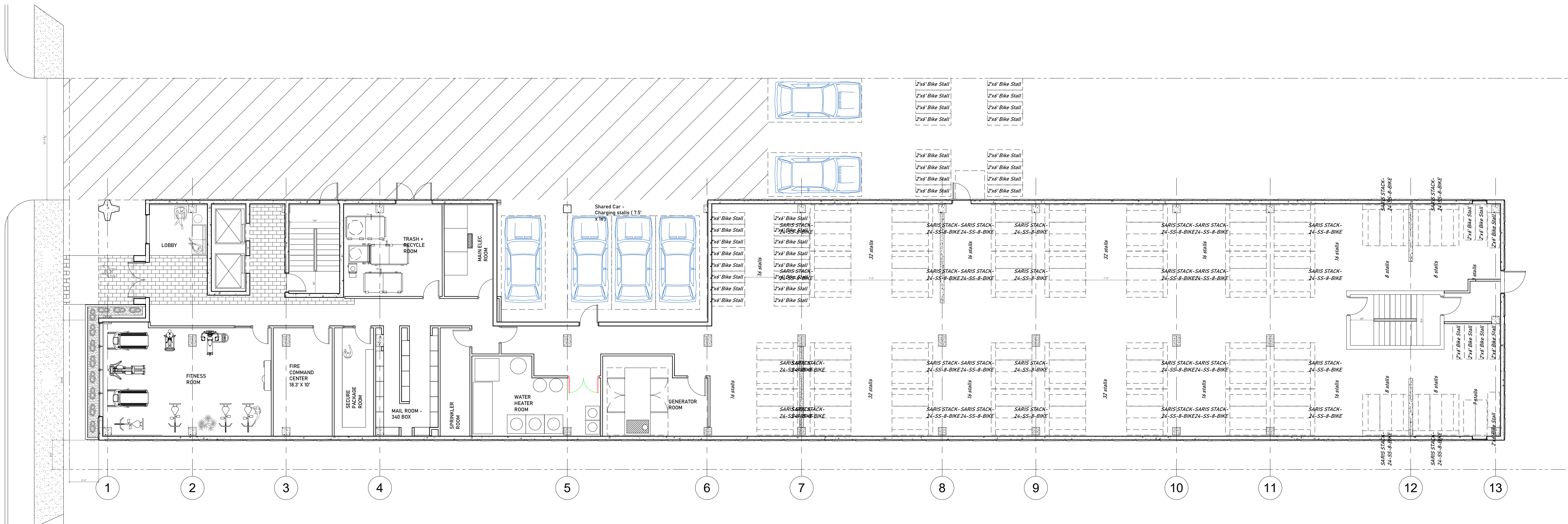


EXISTING BUILDING ON SITE

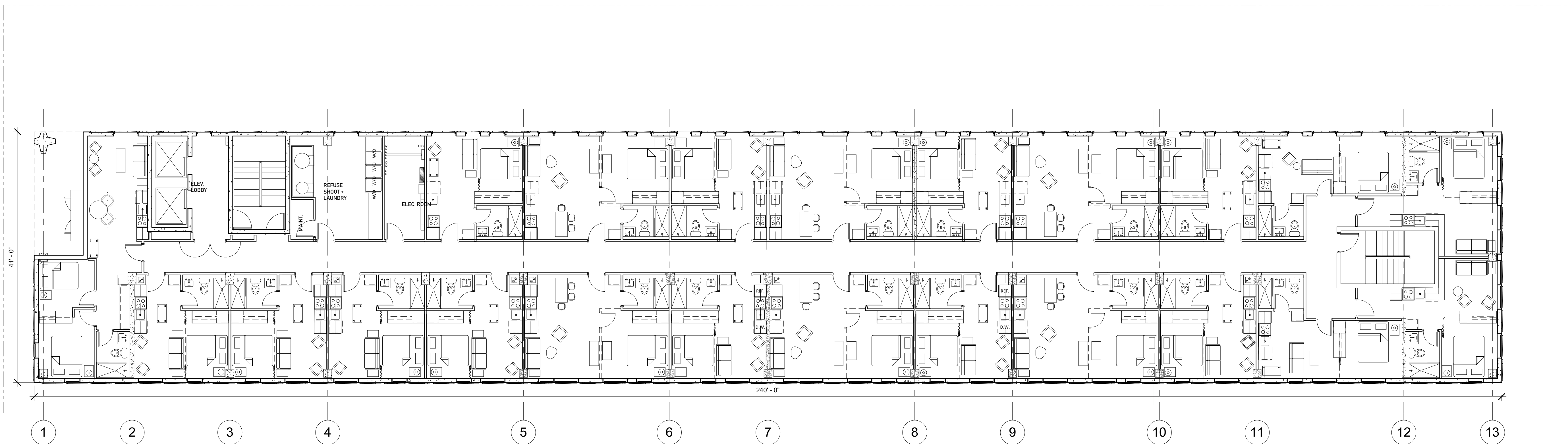
PROPOSED BUILDING ON SITE

Revisions:	

Project #: 21.000
 Issued For: Review
 Date: 06/03/2022



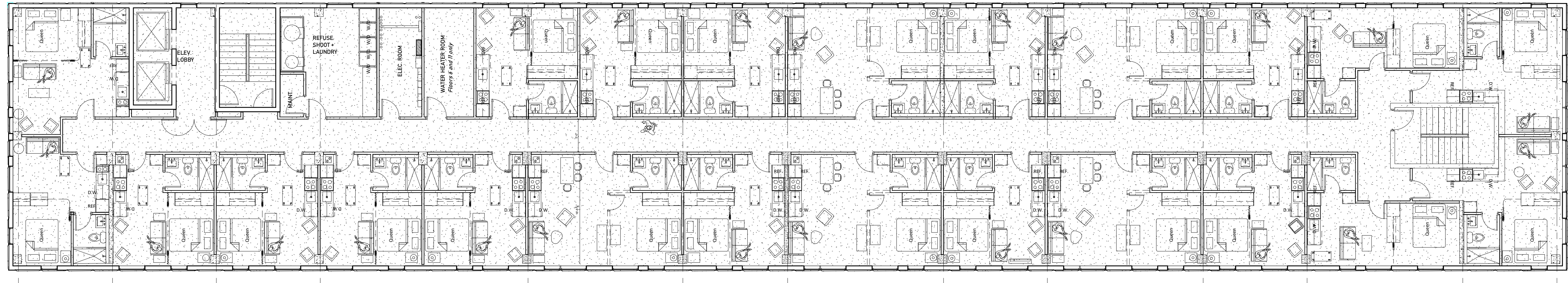
① Level 1
1/8" = 1'-0"



② Levels 2-5
1/8" = 1'-0"

Revisions:

Project #: 21000
Issued For: Review
Date: 07/08/2022



① Levels 6 and 11
1/8" = 1'-0"

2

3

4

5

6

7

8

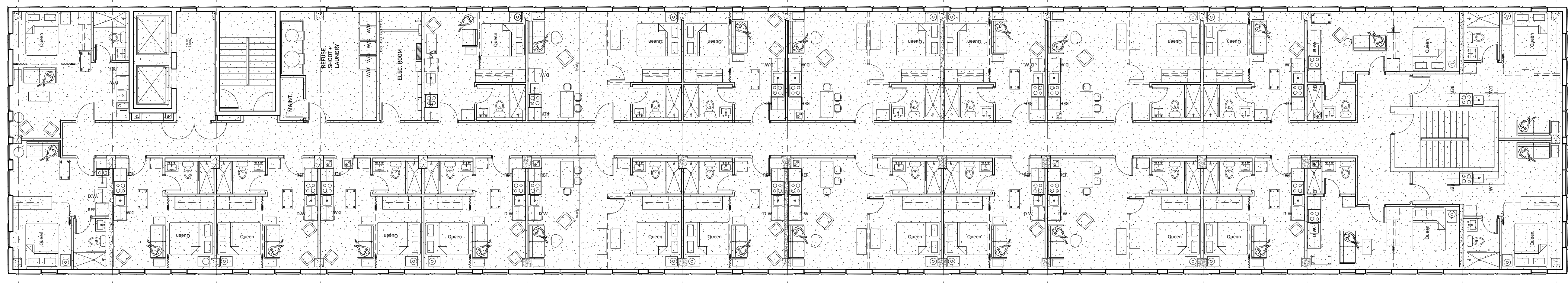
9

10

11

12

13



② Levels 7-10 and 12-15
1/8" = 1'-0"

2

3

4

5

6

7

8

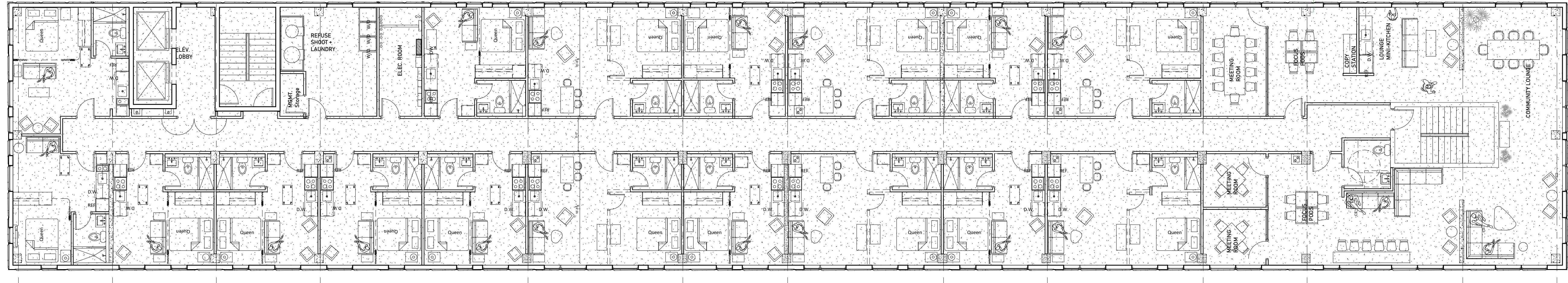
9

10

11

12

13



③ Level 16
1/8" = 1'-0"

2

3

4

5

6

7

8

9

10

11

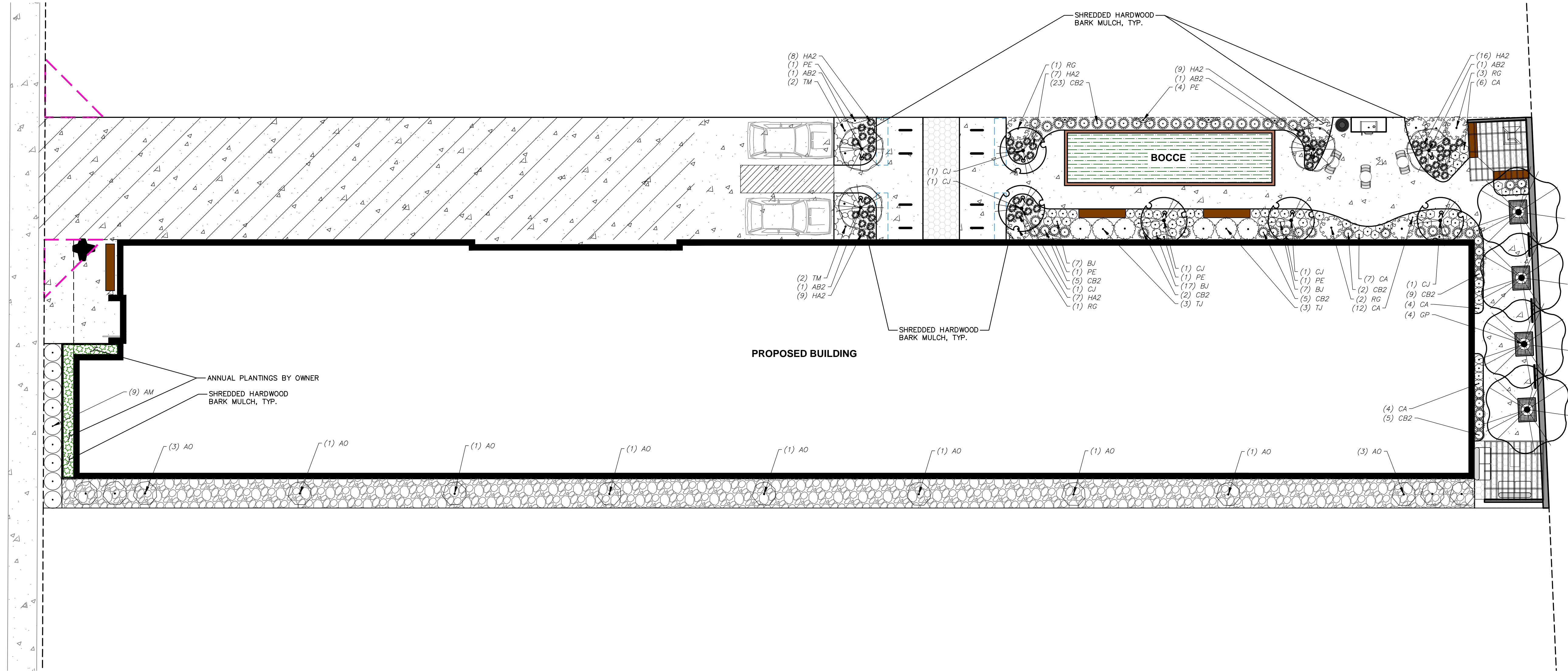
12

13

Revisions:	

Project #: 21000
Issued For: Review
Date: 07/08/2022

WEST WILSON STREET



PLANT SCHEDULE					
DECIDUOUS TREES	CODE	BOTANICAL / COMMON NAME	CONT	SIZE	QTY
	AB2	<i>Acer saccharum</i> 'Barrett Cole' TM Apollo Sugar Maple	B & B	2.5" Cal	4
	CJ	<i>Carpinus caroliniana</i> 'J.N. Upright' TM Firespire American Hornbeam	B & B	2.5" Cal	5
	GP	<i>Ginkgo biloba</i> 'Princeton Sentry' Princeton Sentry Maidenhair Tree	B & B	2.5" Cal	4
DECIDUOUS SHRUBS	CODE	BOTANICAL / COMMON NAME	CONT	SIZE	QTY
	AO	<i>Amelanchier alnifolia</i> 'Obelisk' TM Standing Ovation Serviceberry	B & B	Min. 5' tall	13
	AM	<i>Aronia melanocarpa</i> 'UCQNNAM165' TM Low Scape Mound Chokeberry	#3	Min. 8" - 18"	9
	RG	<i>Ribes alpinum</i> 'Green Mound' Green Mound Alpine Currant	#5	Min. 24" - 36"	8
EVERGREEN SHRUBS	CODE	BOTANICAL / COMMON NAME	CONT	SIZE	QTY
	TM	<i>Taxus x media</i> 'Everlow' Everlow Yew	#3	Min. 12" Wide	4
	TJ	<i>Tsuga canadensis</i> 'Jeddalah' Jeddalah Eastern Hemlock	#5	Min. 12" - 24"	6
PERENNIALS & GRASSES	CODE	BOTANICAL / COMMON NAME	CONT	SIZE	QTY
	BJ	<i>Brunnera macrophylla</i> 'Jack Frost' TM Jack Frost Siberian Bugloss	#1	Min 8" - 18"	36
	CB2	<i>Calamagrostis brachytricha</i> Korean Feather Reed Grass	#1	Min 8" - 18"	53
	CA	<i>Chelone lyonii</i> 'Armitpp02' TM Tiny Tortuga Pink Turtlehead	#1	Min 8" - 18"	37
	HA2	<i>Hakonechloa macro</i> 'Aureola' Golden Variegated Forest Grass	#1	Min 8" - 18"	56
	PE	<i>Parthenocissus quinquefolia engelmannii</i> Engelmann Virginia Creeper	#1	Min. 24" - 36"	9

LEGEND	
	PROPERTY LINE
	RIGHT-OF-WAY
	EASEMENT LINE
	BUILDING OUTLINE
	BUILDING OVERHANG
	EDGE OF PAVEMENT
	STANDARD CURB AND GUTTER
	6" CONCRETE RIBBON CURB
	CONCRETE PAVEMENT
	ANNUAL PLANTINGS BY OWNER
	DECORATIVE STONE MULCH
	RETAINING WALL
	TREE UPLIGHTING
	BIKE RACK
	ALUMINUM EDGING

- ### GENERAL NOTES
- REFER TO THE EXISTING CONDITIONS SURVEY FOR EXISTING CONDITIONS NOTES AND LEGEND.
 - ALL WORK IN THE ROW SHALL BE IN ACCORDANCE WITH THE MUNICIPAL STANDARD SPECIFICATIONS FOR PUBLIC WORKS CONSTRUCTION.
 - JSD SHALL BE HELD HARMLESS AND DOES NOT WARRANT ANY DEVIATIONS BY THE OWNER/CONTRACTOR FROM THE APPROVED CONSTRUCTION PLANS THAT MAY RESULT IN DISCIPLINARY ACTIONS BY ANY OR ALL REGULATORY AGENCIES.
 - DRAWING FOR REVIEW - NOT FOR CONSTRUCTION UNLESS OTHERWISE NOTED IN THE TITLE BLOCK.
 - THE LANDSCAPE CONTRACTOR SHALL COORDINATE ALL FINE GRADING AND TOPSOILING WITH GENERAL CONTRACTOR
 - REFER TO "LANDSCAPE DETAILS AND NOTES" SHEET FOR ADDITIONAL DETAILS, NOTES AND SPECIFICATION INFORMATION INCLUDING MATERIALS, GUARANTEE AND EXECUTION RELATED TO LANDSCAPE PLAN
 - CONTRACTOR SHALL REVIEW SITE CONDITIONS FOR UTILITY CONFLICTS, DRAINAGE ISSUES, SUBSURFACE ROCK, AND PLANT PLACEMENT CONFLICTS PRIOR TO PLANT INSTALLATION. REPORT ANY CONDITIONS THAT MAY HAVE ADVERSE IMPACT ON PLANTING OPERATIONS TO LANDSCAPE ARCHITECT
 - DO NOT COMMENCE PLANTING OPERATIONS UNTIL ALL ADJACENT SITE IMPROVEMENTS, IRRIGATION INSTALLATION (IF APPLICABLE), AND FINISH GRADING ARE COMPLETE



CREATE THE VISION TELL THE STORY

jsdinc.com
 MADISON REGIONAL OFFICE
 161 HORIZON DRIVE, SUITE 101
 VERONA, WISCONSIN 53593
 P. 608.848.5060

CLIENT:
SEA DESIGN

CLIENT ADDRESS:
 N3302 SOUTH OAKLAND
 FORT ATKINSON, WI 53538

PROJECT:
**139 W. WILSON ST.
 REDEVELOPMENT**

PROJECT LOCATION:
**CITY OF MADISON
 DANE COUNTY
 WISCONSIN, 53073**

PLAN MODIFICATIONS:		
#	Date:	Description:
1	6.13.2022	UDC SUBMITTAL
2		
3		
4		
5		
6		
7		
8		
9		
10		
11		
12		
13		
14		
15		

Designed By: MRA
 Reviewed By: KJY
 Approved By:

SHEET TITLE:
LANDSCAPE PLAN

SHEET NUMBER:
L1.0

JSD PROJECT NO: 22-11487

File: I:\2022\2211487\DWG\Landscape Sheets\2211487 - Landscape.dwg Layout: L1.0 User: mammal Plotted: Jun 13, 2022 - 10:41 am Xref's: 22-11487 139 West Wilson

THESE PLANS AND DESIGNS ARE COPYRIGHT PROTECTED AND MAY NOT BE USED IN WHOLE OR IN PART WITHOUT THE WRITTEN CONSENT OF JSD PROFESSIONAL SERVICES, INC.

DIGGERS HOTLINE
 Toll Free (800) 242-8511



① Wilson entry - Easterly View



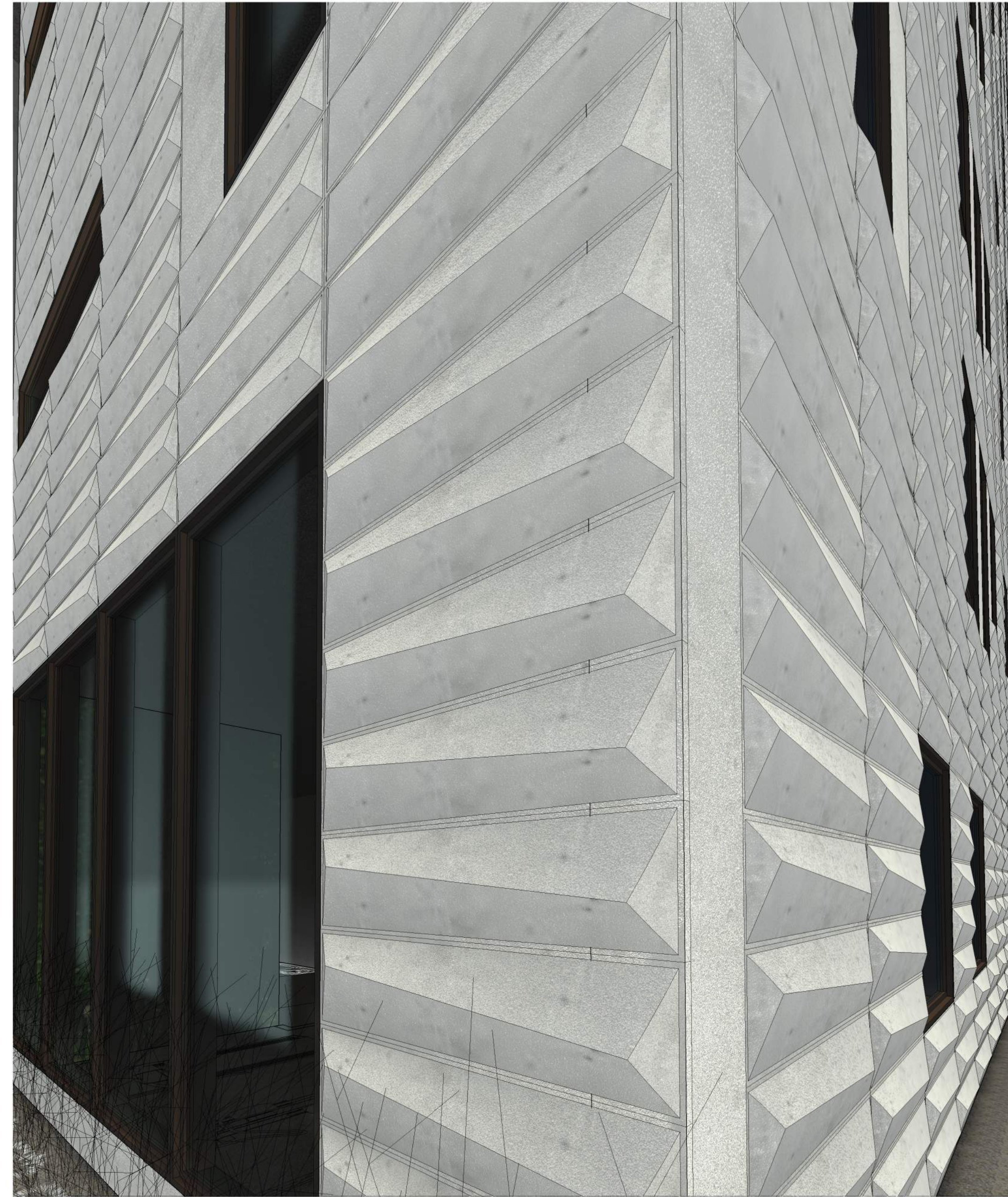
③ Entry closeup



② Wilson entry - Westerly View

Revisions:	

Project #: 21.000
Issued For: Review
Date: 07/08/2022



FRACTAL PATTERN UNIT FORM
139 West Wilson Street

SEA Design

1 building corner

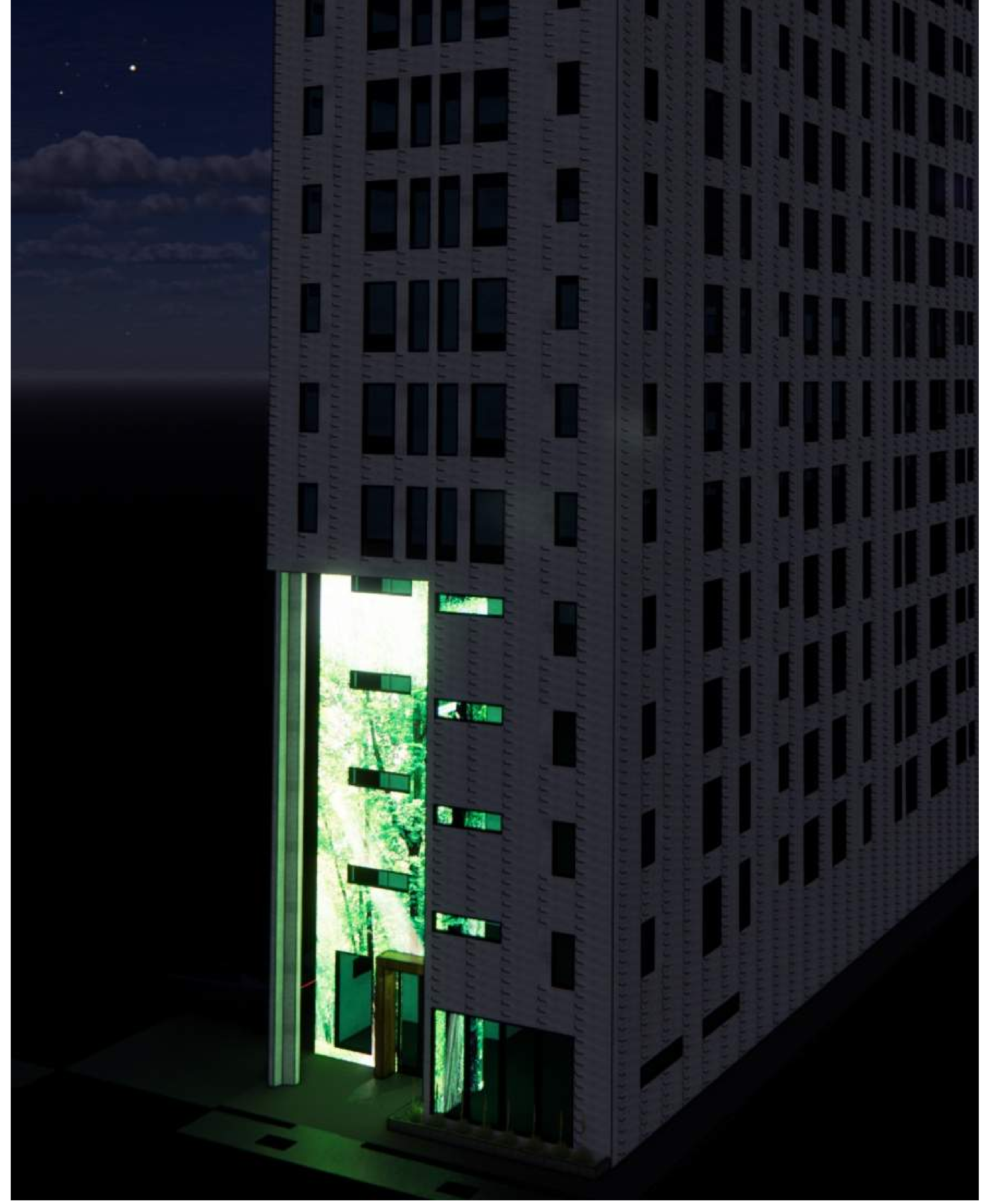
Revisions:	

Project #: 21.000
Issued For: Review
Date: 06/03/2022



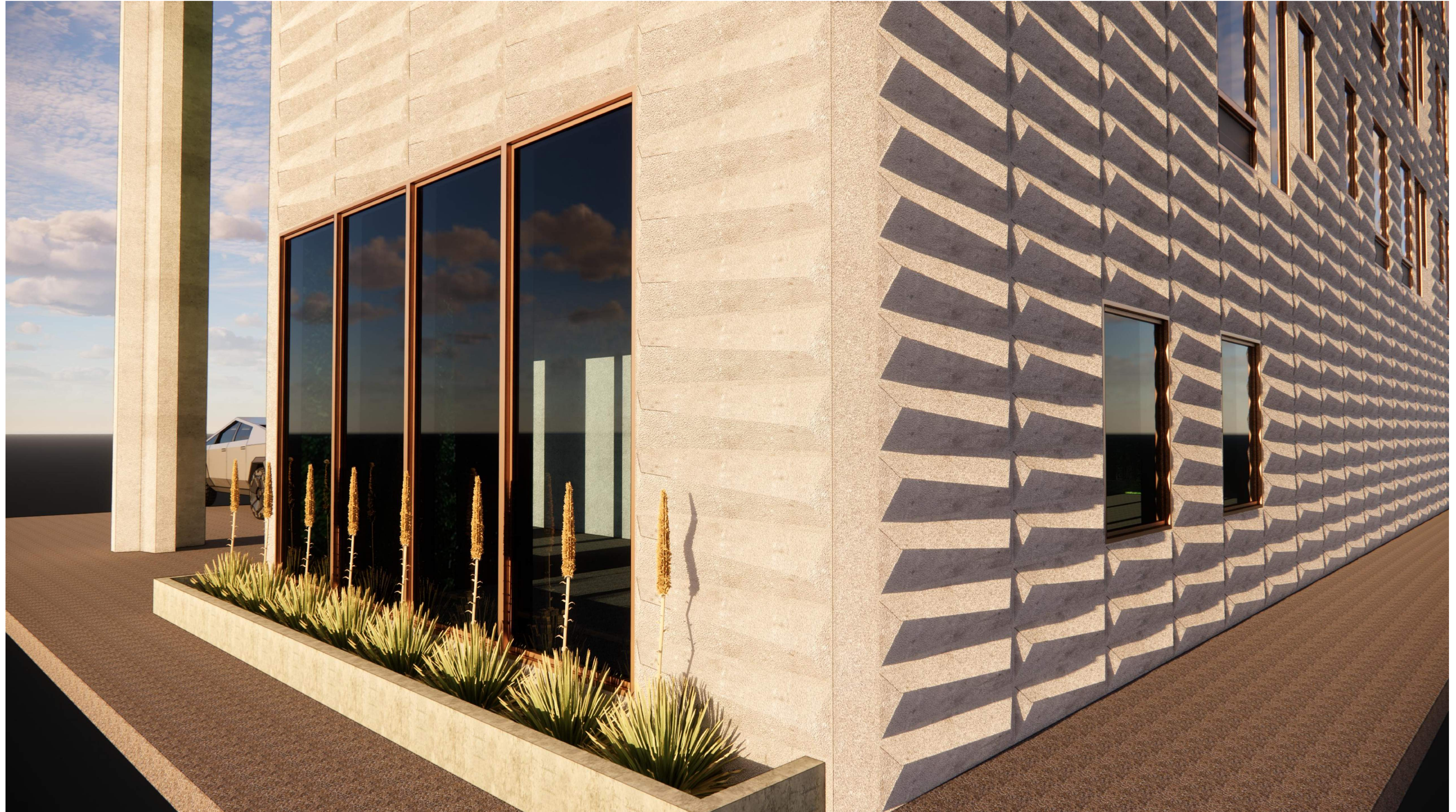
Revisions:	

Project #: 21.000
Issued For: Review
Date: 07/08/2022



Revisions:	

Project #: 21.000
Issued For: Review
Date: 07/08/2022



progression

139 West Wilson
Madison, Wisconsin
West Wilson Perspectives

Revisions:	

Project #: 21.000
Issued For: Review
Date: 07/08/2022