

Capitol East Parking Garage

Madison Arts Commission



Introduction

Project Goals / Measures of Success

Partnerships

City, Cosmos, AMFAM

Urban Enhancement *Public Realm, Public Art*

Pedestrian/Vehicular Traffic

Capitol East District Plan

Program *600 + Stalls, Commercial Space, Budget*

Image and Character *Responsive, Appropriate,*

Budget

Building Program

Parking Garage **650 Stalls** (+12 Motorcycle/Moped & 4 EV)

34 Bicycle spaces

Security Office (Office, Restroom, Storage)

Support (Equip Storage, Mech/Elec, Generator, Data)

Commercial **9,000 SF** on 2 Levels

Potential Mezzanine @ 1,400 SF

Schedule

Highlights

- Schematic Design Phase: Completed March 15
- Design Development Phase: Completed April 17
- Construction Documents Phase (100%): June 16
- Issue Bid Documents: June 30
- Bids Due: August 11

Parksmart Analysis

Approximately 110 – 120 pts (bronze) with minimal added cost.

Green represents achievable points within credits

MANAGEMENT	MAX POINTS	PROGRAMS	MAX POINTS	TECHNOLOGY AND STRUCTURE DESIGN	MAX POINTS
Parking Pricing	6	Placemaking	6	Idle Reduction Payment Systems	4
Shared Parking	6	Access to Mass Transit	4	Fire Suppression Systems	2
TMO/TMA	4	Wayfinding Systems - External	4	No/Low VOC Coatings, Paints, Sealants	2
Recycling Program	4	Wayfinding Systems - Internal	4	Tire Inflation Stations	2
Sustainable Purchasing Program	2	Traffic Flow Plan	4	EV Charging Stations	6
Proactive Operational Maintenance	6	Carshare Program	6	HVAC Systems - Occupied Spaces	6
Cleaning Procedures - Occupied Spaces	2	Rideshare Program	6	Ventilation Systems - Parking Decks	6
Cleaning Procedures - Parking Decks	6	Low-emitting and Fuel Efficient Vehicles	4	Lighting Controls	8
Building Systems Commissioning	8	Alternative Fuel Vehicles	6	Energy Efficient Lighting System	8
Construction Waste Management	6	Alternative Fuel Fleet Vehicles	4	Stormwater Management	6
Regional Materials	6	Bicycle Parking	6	Rainwater Harvesting	4
Regional Labor	4	Bicycle Sharing/Rental	6	Greywater Reuse	2
Reused/Repurposed/Recycled Materials	6	Marketing/Educational Program	4	Indoor Water Efficiency	2
Third Party Sustainability Certification	12			Water Efficient Landscaping	2
Credentialed Management	4	INNOVATION		Roofing Systems	6
Life Cycle Assessment	8	Innovative Approach	6	Renewable Energy Generation	12
				Design for Durability	6
				Energy Resiliency - Storage	4

Total Management Points	90
Total Programs Points	64
Total Technology & Structure Design Points	88
Total Innovation Points	6
Total Parksmart Points	248



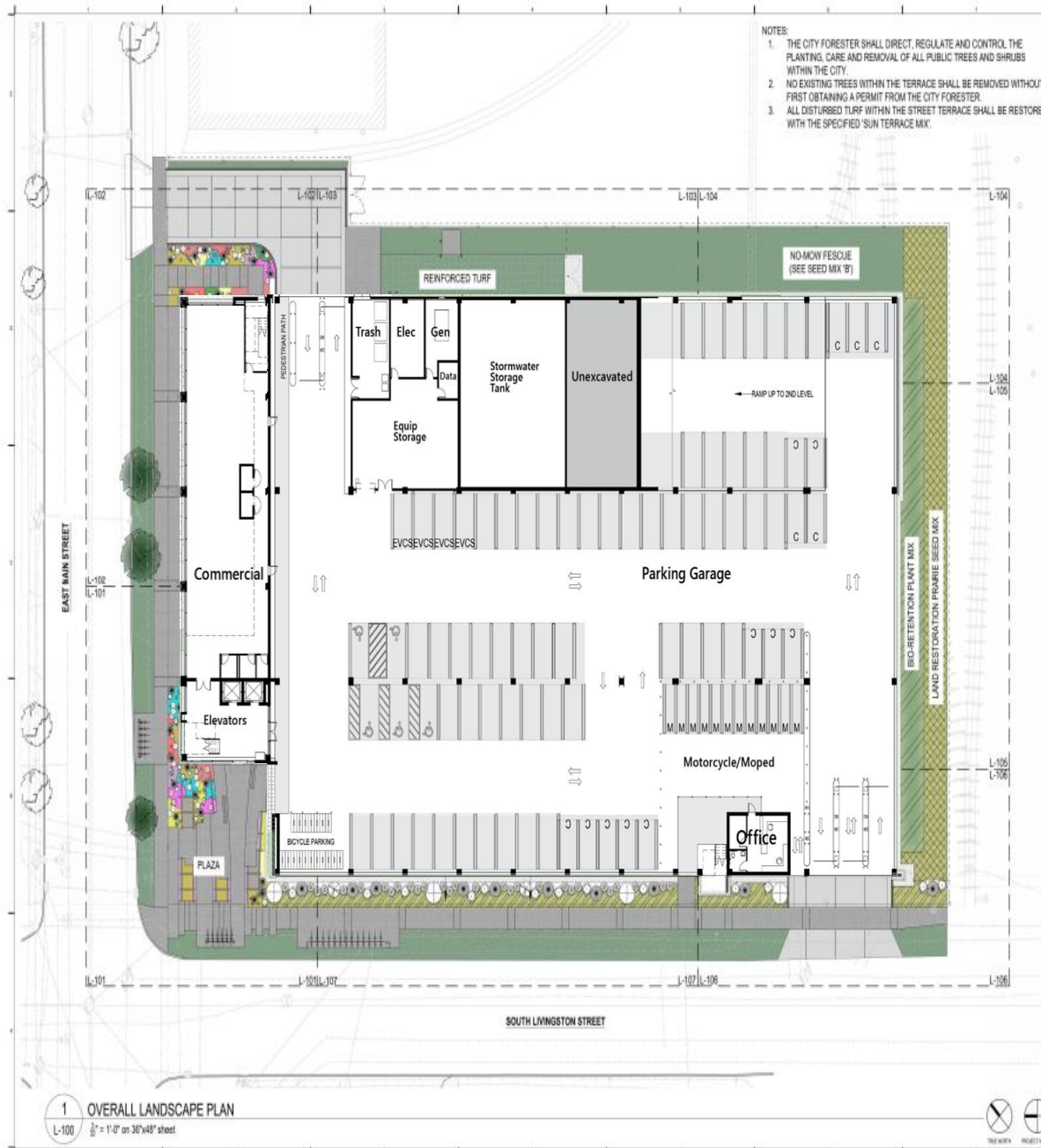
Parksmart Award Levels	
Pioneer:	90 Existing facility
Bronze:	110 - 134
Silver:	135 - 159
Gold:	160+

} New construction

Required minimums in Management, Programs and Technology & Structure Design categories: 15 in each category for existing facilities and 20 in each category for new construction

Site

Overall Plan

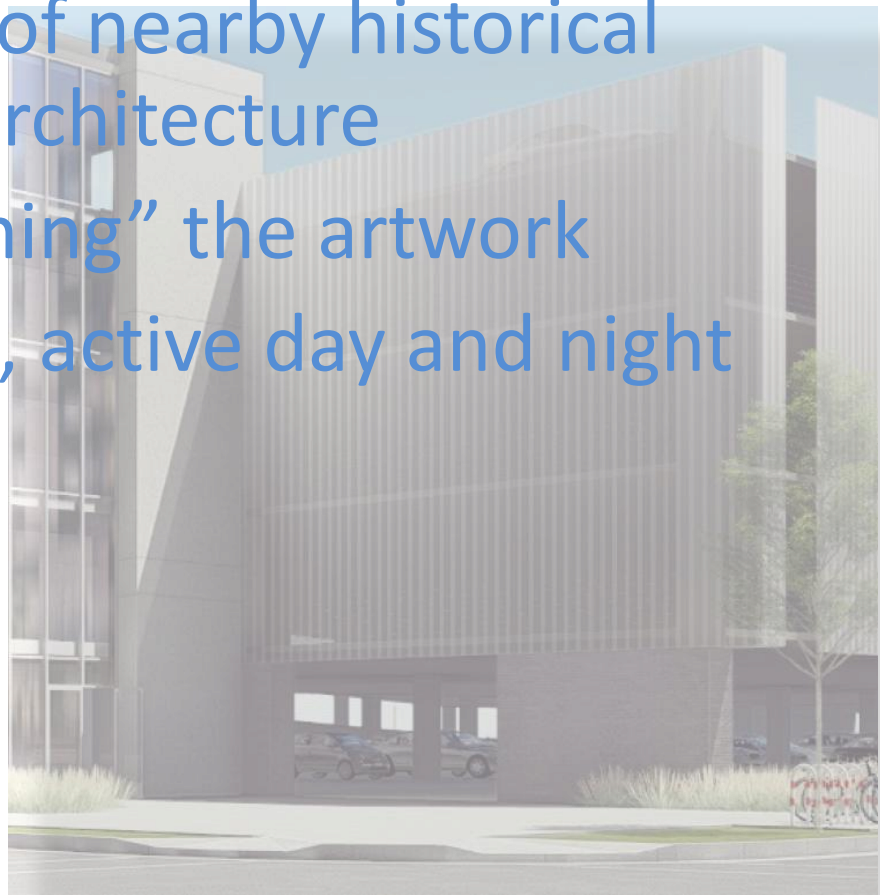


Actual Size Artworks



What we were thinking about:

- Proximity of MG&E (energy, power, light)
- Expressive qualities of nearby historical and contemporary architecture
- The plaza area “framing” the artwork
- Dense urban setting, active day and night



“Glimpse”

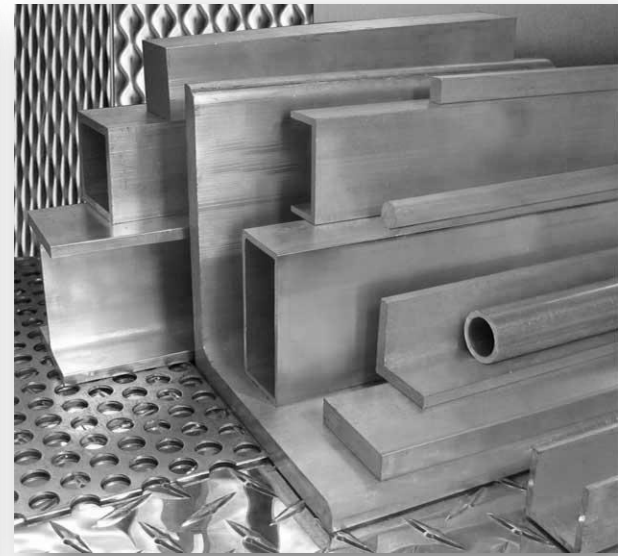
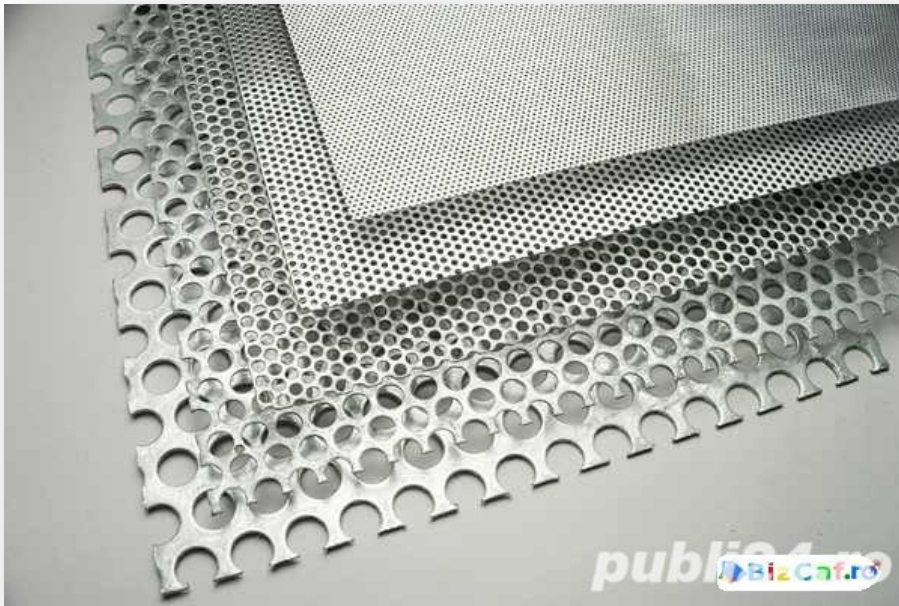


“Glimpse”



“Glimpse”





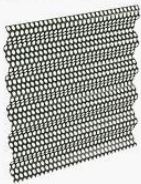
Home / Products / Metal Panels / Systems / Perforated Screenwall Panels

EcoScreen® Perforated Screenwall

EcoScreen perforated screen walls are created through a unique fabrication process that utilizes 20% open area. The result is a 10% to 40% open area that provides an airy aesthetic that controls light and air movement in their surroundings.

Standard pattern options include: 10% open area reverse pattern with a 1/8" diameter and 3/8" spacing and 9/16" spacing. 23% open area staggered pattern, 23% open area reverse pattern, 30% open area staggered pattern with 1/8" diameter and 3/16" spacing are also available.

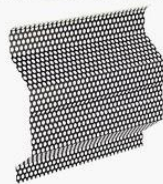
EcoScreen panels may be installed horizontally or vertically. Only Horizontal panels are shown below.



Econolap 3/4" (19mm)



BR5-36



MR3-36



Actual Size Artworks

