

# TRANSPORTATION PROJECT PLAT NO: 5992-09-09 - 4.03

THAT PART OF LOTS 2-12 OF BLOCK 310 AND PART OF LOTS 1 & 2 OF BLOCK 312 OF MADISON SQUARE RILEY PLAT AND OTHER LANDS LOCATED IN THE SW1/4 OF THE SW1/4, IN SECTION 6, T7N, R10E, CITY OF MADISON, DANE COUNTY, WISCONSIN.

RELOCATION ORDER LOCAL STREET DANE COUNTY CITY OF MADISON, EAST JOHNSON STREET, (NORTH BALDWIN STREET TO FIRST STREET)

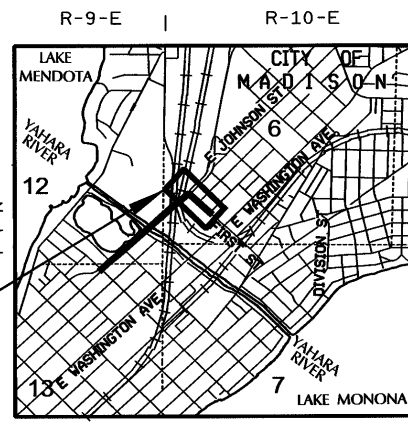
TO PROPERLY ESTABLISH, LAY OUT, WIDEN, ENLARGE, EXTEND, CONSTRUCT, RECONSTRUCT, IMPROVE, OR MAINTAIN A PORTION OF THE HIGHWAY DESIGNATED ABOVE, THE CITY OF MADISON DEEMS IT NECESSARY TO RELOCATE OR CHANGE SAID HIGHWAY AND ACQUIRE CERTAIN LANDS AND INTERESTS OR RIGHTS IN LANDS FOR THE ABOVE PROJECT.

TO EFFECT THIS CHANGE, PURSUANT TO AUTHORITY GRANTED UNDER SECTION 62.22, WISCONSIN STATUTES, THE CITY OF MADISON HEREBY ORDERS THAT:

2. THE LANDS OR INTERESTS OR RIGHTS IN LANDS AS SHOWN ON THIS PLAT ARE REQUIRED BY THE CITY FOR THE ABOVE PROJECT AND SHALL BE ACQUIRED IN THE NAME OF THE CITY OF MADISON, PURSUANT TO THE PROVISIONS OF SECTION 62.22, WISCONSIN STATUTES.

| POINT # | STATION     | OFFSET  | Y         | X         |
|---------|-------------|---------|-----------|-----------|
| 225     | 98+98.60    | -42.94' | 489914.32 | 826909.57 |
| 227     | 98+96.55    | 90.41'  | 489818.13 | 827001.94 |
| 258     | 98+96.57    | 89.04'  | 489819.11 | 827000.99 |
| 300     | 17+56.94 FI | 37.96'  | 489406.34 | 827529.42 |
| 301     | 16+22.58 FI | 38.23'  | 489503.59 | 827435.57 |
| 302     | 15+91.92 FI | 37.80'  | 489525.14 | 827415.90 |
| 303     | 14+03.03 FI | 39.26'  | 489645.86 | 827273.00 |
| 304     | 12+51.30 FI | 39.00'  | 489752.92 | 827163.48 |
| 305     | 11+24.88 FI | 47.43'  | 489835.27 | 827067.18 |
| 306     | 99+51.47    | -42.13' | 489950.94 | 826947.71 |
| 307     | 101+49.59   | -45.22' | 490091.85 | 827086.16 |
| 309     | 101+49.70   | 86.78'  | 489999.33 | 827180.31 |
| 310     | 12+88.88 FI | -66.87' | 489802.36 | 827264.36 |
| 311     | 13+54.88 FI | -66.78' | 489756.16 | 827311.49 |
| 312     | 16+17.18 FI | -55.45' | 489571.09 | 827500.75 |
| 313     | 16+84.27 FI | -58.76' | 489525.77 | 827548.74 |

| POINT # | STATION     | OFFSET  | Y         | X         |
|---------|-------------|---------|-----------|-----------|
| 314     | 17+53.97 FI | -60.85' | 489476.98 | 827598.57 |
| 316     | 100+70.27   | 86.99'  | 489941.15 | 827123.15 |
| 350     | 10+91.46 FI | 22.60'  | 489876.39 | 827060.64 |
| 351     | 11+41.64 FI | 22.73'  | 489841.21 | 827096.44 |
| 352     | 11+41.58 FI | 46.31'  | 489824.39 | 827079.91 |
| 353     | 12+31.64 FI | 22.97'  | 489778.12 | 827160.63 |
| 354     | 12+31.60 FI | 40.31'  | 489785.76 | 827148.47 |
| 355     | 14+42.37 FI | 39.00'  | 489619.56 | 827304.14 |
| 356     | 14+43.31 FI | 26.23'  | 489628.71 | 827313.10 |
| 357     | 13+21.75 FI | 23.22'  | 489714.96 | 827224.89 |
| 358     | 15+51.00 FI | 34.08'  | 489553.22 | 827390.29 |



APPROVED FOR THE CITY OF MADISON  
 RELOCATION ORDER APPROVED BY THE COMMON COUNCIL, RESOLUTION: RES-18-00066  
 FILE ID: 49546  
 DATE: 1/2/18  
 EFFECTIVE 2/13/18  
 CITY CLERK

RELOCATION ORDER APPROVED BY THE PLANNING COMMISSION  
 DATE: 12/4/17  
 EXECUTIVE SECRETARY

RELOCATION ORDER APPROVED BY THE BOARD OF PUBLIC WORKS  
 DATE: 12/13/17  
 EXECUTIVE SECRETARY

STRAND ASSOCIATES, INC. •  
 910 WEST WINGRA DRIVE, MADISON, WI 53715  
 (608) 251-4843

I, HEATHER S. BARTELT, PROFESSIONAL LAND SURVEYOR, HEREBY CERTIFY THAT IN FULL COMPLIANCE WITH THE PROVISIONS OF SECTION 84.095 OF THE WISCONSIN STATUTES AND UNDER THE DIRECTION OF THE CITY, I HAVE SURVEYED AND MAPPED TRANSPORTATION PROJECT PLAT 5992-09-09-4.03 AND THAT SUCH PLAT CORRECTLY REPRESENTS ALL EXTERIOR BOUNDARIES OF THE SURVEYED LAND.

(SIGNATURE) *Heather Bartelt* DATE: 2/23/18  
 (PRINTED NAME) HEATHER S. BARTELT  
 (REGISTRATION NUMBER) S - 2797

Office of Register of Deeds  
 Dane County, Wisconsin  
 Received for Record A-27  
 20 18 at 3:50 o'clock P.M.  
 and recorded in vol. 60-090A  
 of Plats on page 502  
 Kristi Chikwari by Lisa M. Kelly - Deputy  
 Register

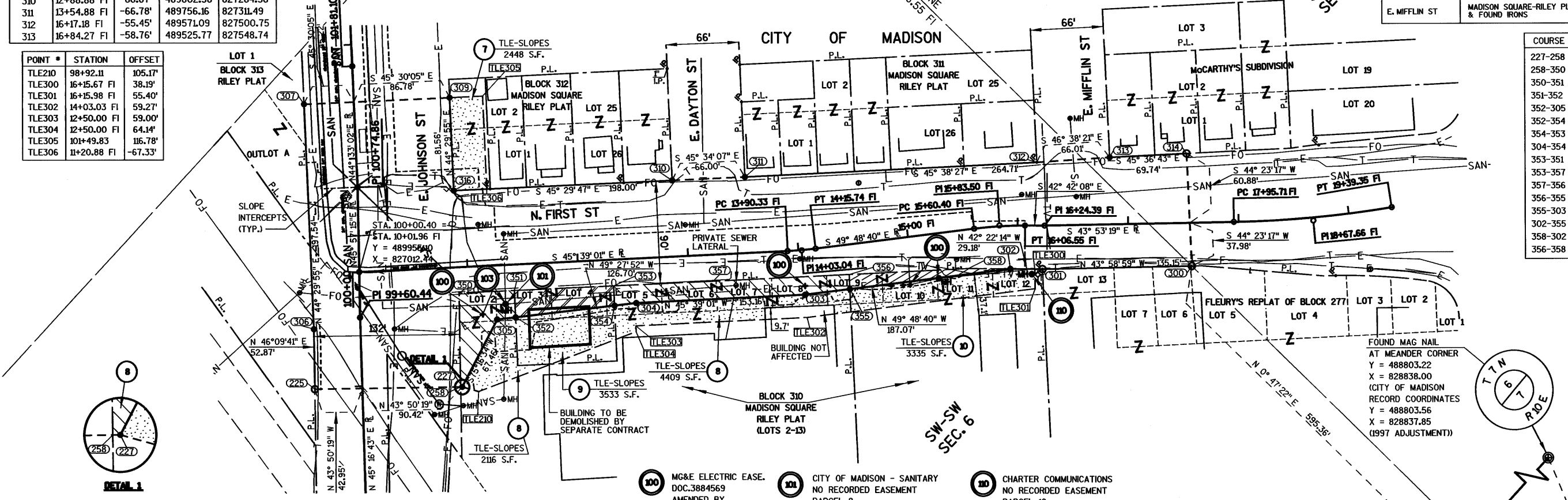
RESERVED FOR REGISTER OF DEEDS  
 PROJECT NUMBER 5992-09-09-4.03  
 AMENDMENT NO:

FOR ADDITIONAL INFORMATION REFER TO THE TITLE SHEET, RECORDED IN THE OFFICE OF REGISTER OF DEEDS, IN DANE COUNTY AS SHEET 2 OF 2 OF DOCUMENT NUMBER 5391227.

| HWY           | BASIS OF EXIST. R/W  |
|---------------|--|
| E. JOHNSON ST | PREVIOUS PROJECT T-0219(3), MADISON SQUARE-RILEY PLAT, DEED DOC. 155980 & FOUND IRONS                                  |
| N. FIRST ST   | PREVIOUS PROJECT: T-0219(3), MADISON SQUARE-RILEY PLAT FLEURY'S REPLAT OF PART OF BLOCK 277 & FOUND IRONS DOC. 4125778 |
| E. DAYTON ST  | MADISON SQUARE-RILEY PLAT & FOUND IRONS  |
| E. MIFFLIN ST | MADISON SQUARE-RILEY PLAT, MCCARTHY'S SUBDIVISION & FOUND IRONS  |

| COURSE  | BEARING         | DIST.   |
|---------|-----------------|---------|
| 227-258 | N 43° 50' 19" W | 1.36'   |
| 258-350 | N 46° 09' 41" E | 82.70'  |
| 350-351 | S 45° 29' 47" E | 50.19'  |
| 351-352 | S 44° 30' 13" W | 23.58'  |
| 352-305 | N 49° 27' 52" E | 16.74'  |
| 352-354 | S 49° 27' 52" E | 90.22'  |
| 354-353 | N 44° 30' 13" E | 17.34'  |
| 304-354 | N 49° 27' 52" W | 19.74'  |
| 353-351 | N 45° 29' 47" W | 90.00'  |
| 353-357 | S 45° 29' 47" E | 90.11'  |
| 357-356 | S 44° 38' 27" E | 123.37' |
| 356-355 | S 45° 22' 50" W | 12.81'  |
| 355-303 | N 49° 48' 40" W | 40.76'  |
| 302-355 | N 49° 48' 40" W | 146.31' |
| 358-302 | S 42° 22' 14" E | 38.00'  |
| 356-358 | S 45° 38' 27" E | 107.97' |

| POINT # | STATION     | OFFSET  |
|---------|-------------|---------|
| TLE210  | 98+92.11    | 105.17' |
| TLE300  | 16+25.67 FI | 38.19'  |
| TLE301  | 16+15.98 FI | 55.40'  |
| TLE302  | 14+03.03 FI | 59.27'  |
| TLE303  | 12+50.00 FI | 59.00'  |
| TLE304  | 12+50.00 FI | 64.14'  |
| TLE305  | 101+49.83   | 116.78' |
| TLE306  | 11+20.88 FI | -67.33' |



POSITIONS SHOWN ON THIS PLAT ARE WISCONSIN COUNTY COORDINATES, DANE COUNTY, NAD83/1997 IN US SURVEY FEET. VALUES SHOWN ARE GRID COORDINATES, GRID BEARINGS, AND GRID DISTANCES. GRID DISTANCES MAY BE USED AS GROUND DISTANCES.

### SCHEDULE OF LANDS & INTERESTS REQUIRED

| PARCEL NUMBER | OWNER(S)  | INTEREST REQUIRED | R/W NEW | S.F. EXISTING | TOTAL | TLE S.F. |
|---------------|---|-------------------|---------|---------------|-------|----------|
| 7             | CITY OF MADISON (ENGINEER WALKWAYS & BIKEPATHS) | TLE               | ---     | ---           | ---   | 2448     |
| 8             | CITY OF MADISON (MOTOR EQUIPMENT)               | FEE, TLE          | 5604    | ---           | 5604  | 6525     |
| 9             | CITY OF MADISON (WATER UTILITY WELL *3)         | FEE, TLE          | 1842    | ---           | 1842  | 3533     |
| 10            | MADISON METROPOLITAN SEWERAGE DISTRICT (MMSD)   | FEE, TLE          | 1051    | ---           | 1051  | 3335     |

### UTILITY INTERESTS REQUIRED

| UTILITY NUMBER | OWNER(S)   | INTEREST REQUIRED |
|----------------|--|-------------------|
| 100            | MADISON GAS & ELECTRIC COMPANY (MG&E) - ELECTRIC | RELEASE OF RIGHTS |
| 101            | CITY OF MADISON - SANITARY                       | RELEASE OF RIGHTS |
| 103            | MADISON METROPOLITAN SEWERAGE DISTRICT (MMSD)    | RELEASE OF RIGHTS |
| 110            | CHARTER COMMUNICATIONS                           | RELEASE OF RIGHTS |

- 100 MG&E ELECTRIC EASE. DOC.3884569 AMENDED BY DOC.3888764 PARCELS 8 & 9
- 101 CITY OF MADISON - SANITARY NO RECORDED EASEMENT PARCEL 8
- 102 CHARTER COMMUNICATIONS NO RECORDED EASEMENT PARCEL 10
- 103 MG&E ELECTRIC EASEMENT DOC.2207820, V.14375, P.18 PARCEL 10
- 103 MMSD EASE. DOC.3480336 AMENDED BY DOC.3504853 PARCELS 8 & 9
- 103 CITY OF MADISON - SANITARY NO RECORDED EASEMENT PARCEL 8
- 103 MMSD 10' EASE DOC.1617301 V.1052, P.455 PARCEL 8

P.L. = 97+78.91 Y = 489,799.58 X = 826,854.73 DELTA = 1° 30' 35" (LT) D = 5' 33' 46" T = 13.57" R = 27.14" P.C. = 1030.00' P.T. = 97+92.48

P.L. = 14+03.04 FI Y = 489,674.74 X = 827,299.25 DELTA = 4° 09' 39" (LT) D = 16' 22' 13" T = 12.71" L = 25.42" R = 350.00' P.C. = 13+90.33 FI P.T. = 14+15.74 FI

P.L. = 15+83.50 FI Y = 489,558.28 X = 827,437.12 DELTA = 7° 06' 31" (RT) D = 15' 24' 08" T = 23.11" L = 46.15" R = 372.00' P.C. = 15+60.40 FI P.T. = 16+06.55 FI

P.L. = 16+24.39 FI Y = 489,528.19 X = 827,464.89 DELTA = 1° 11' 11" (LT) D = 5' 43' 46" T = 71.94" L = 143.64" R = 1,000.00' P.C. = 17+95.71 FI P.T. = 19+39.35 FI

P.L. = 18+67.66 FI Y = 489,352.87 X = 827,633.53 DELTA = 8° 13' 48" (LT) D = 5' 43' 46" T = 71.94" L = 143.64" R = 1,000.00' P.C. = 17+95.71 FI P.T. = 19+39.35 FI