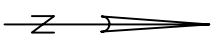


1 FLOOR PLAN
A1.1 SCALE : 1/4" = 1'-0"



PROJECT NAME:
SIMPSON PROPERTY
2200 W. BROADWAY
MADISON, WISCONSIN

SHEET TITLE:
FLOOR PLAN

NO.	DATE	REVISIONS	BY

PROJECT NUMBER: 6125
DATE: 12-13-06
DESIGNED BY: CC/TC/ZN
CHECKED BY: I. NELSEN
DESIGN MANAGER: I. NELSEN

SHEET NUMBER

A1.1







05/23/2006



05/23/2006



05/23/2006



05/23/2006



05/23/2006



05/23/2006



05/23/2006

Quantity	Code Name	Scientific Name	Common Name	Planting Size
2	ABH	Acer X Freemanii 'Autumn Blaze'	Autumn Blaze Maple	2' B&B
1	CCP	Pyrus Calleryana 'Chantrelle'	Chantrelle Callery Pear	2' B&B
1	RPO	Quercus Robur 'Faustraja X Q. bicolor'	Regal Prince English Oak	2' B&B
3	RBC	Betula Nigra (fb)	River Birch (fb)	6' B&B
3	SHL	Gladiolus Trichomanes 'Sylvar'	Sylvar's Think Hemlock	2' B&B
1	SWA	Fraxinus Americana 'Sylvar'	Sylvar's White Ash	2' B&B
3	TCHT	Crataegus Cuneata 'Var. hier' (d)	Think Cokesbur Hawthorn (d)	1 1/2' B&B
Center Evergreen				
Quantity	Code Name	Scientific Name	Common Name	Planting Size
10	BY	Taxus X Media 'Berry Hill'	Berry Hill Yew	15" B&B
5	EY	Taxus X Media 'Evelyn'	Evelyn Yew	15" B&B
2	FAS	Pinus Fergusii 'Var. Albert'	Var. Albert Blue Spruce	4' B&B
10	HWF	Chamaecyparis Thyoides 'Heatherburn'	Heatherburn Whitecedar Falsecypress	# CONT.
20	KCJ	Juniperus Chinen 'Kallys Compact'	Kallys Compact Juniper	# CONT.
5	HL	Juniperus Chinen 'Hansy'	Hansy Juniper	#5 CONT.
7	MJB	Juniperus Chinen 'Mountain'	Mountain Juniper	4' B&B
8	TA	Thuja Occidentalis 'Tedy'	Tedy/Trinidad Arborvitae	4' B&B
Perennial				
Quantity	Code Name	Scientific Name	Common Name	Planting Size
6	AJS	Sedum 'Autumn Joy'	Autumn Joy Sedum (red 24")	# CONT.
9	BESD	Hemerocallis 'Black Eyed Susan'	Black Eyed Susan Daylily (golden 26" Ra)	# CONT.
3	BES	Rudbeckia 'Fid Var. William Goldstrum'	Black-eyed Susan	# CONT.
7	PMH	Hesperis 'William's'	Frances Williams Hesperis (blue 1/4" 40")	# CONT.
10	HDFG	Pennisetum Alpeyuride 'Hamud'	Hamud Dwarf Fountain Grass	# CONT.
4	KFG	Callamagrostis Acutiflora 'Karl Foerster'	Karl Foerster's Feather Reed Grass	# CONT.
6	LBS	Schizanthus Scopolium	Lute Bluetam	# CONT.
6	LSSS	Perovskia Atropurpurea 'Lute Spire'	Lute Spire Russian Sage	# CONT.
5	MY	Acroclia X Phloxiflora	Floeristone Narrow	# CONT.
14	SD	Hemerocallis 'Stella De Oro'	Stella De Oro Daylily (gold 18" Ra)	# CONT.
4	SWAD	Hemerocallis X 'Swirling Water'	Swirling Waters Daylily (purple 22" Em)	# CONT.
Shrub				
Quantity	Code Name	Scientific Name	Common Name	Planting Size
8	AMS	Spiraea Japonica 'Anthony Waterer'	Anthony Waterer Spirea	#2 CONT.
6	CSR	Rosa 'Rusard'	Creech Rose Spine Rose	#2 CONT.
6	CHE	Euconymus Alatus 'Timber Creek'	Chicago Fire Winged Euonymus	# CONT.
5	CLV	Viburnum Dentatum 'Synnoveed'	Chicago Lustre Arnd Viburnum	# CONT.
13	GFS	Spiraea Japonica 'Goldflame'	Goldflame Spirea	# CONT.
17	LPS	Spiraea Japonica 'Turk Phoenix'	Lute Princess Spirea	# CONT.
13	PL	Physica 'Royal Palace'	Palatin Lilac	# CONT.
12	SWN	Physocarpus Opulifolius 'Seward'	Summer Wine Ninebark	# CONT.

CITY OF MADISON

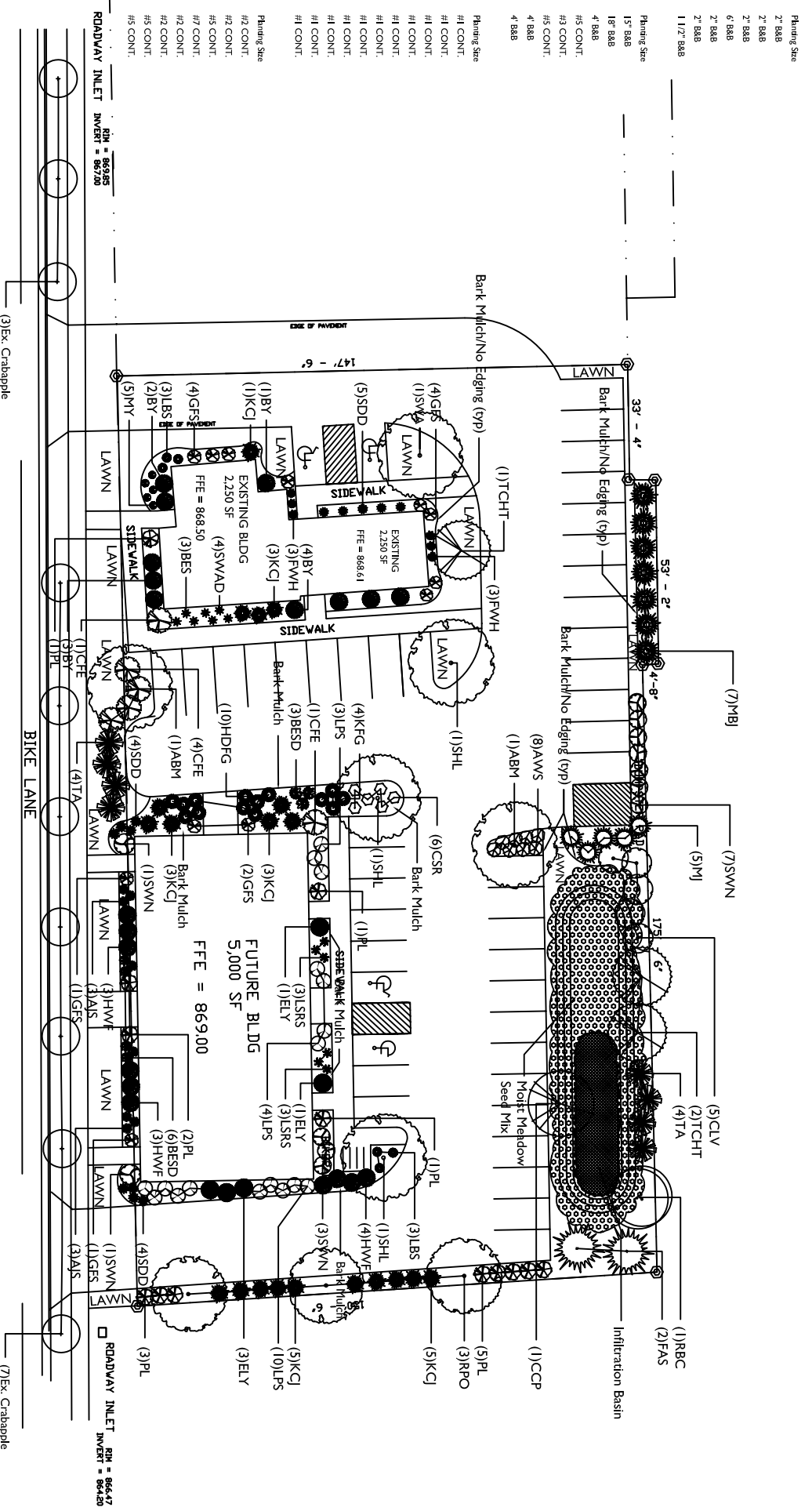
LANDSCAPE POINTS REQUIREMENTS

NUMBER OF PARKING STALLS REQUIRED: 48

NUMBER OF LANDSCAPE POINTS REQUIRED: 220

SOLUTION

3 CANOPY TREES (2'-2 1/2" / 27")	35 PTS.
2 CANOPY TREES (1 1/2" / 25")	15 PTS.
26 DECIDUOUS SHRUBS	2 PTS.
14 EVERGREEN SHRUBS	3 PTS.
18 EVERGREEN TREES (3' HT.)	15 PTS.
18 DECORATIVE WALL OR FENCE	5 PTS. (PER 10 LF.)
AVERAGE HEIGHT 10 3/4"	5 PTS.
AVERAGE HEIGHT - 15"	2 PTS.
TOTAL POINTS	589



Moist Meadow Seed Mix

- Wildflowers: Nodding Flk Onion, New England Aster, Black-eyed Susan, Red Milkweed, Pale Indian Primrose, Joe Pye Weed, Boneset, Dogsooth Daisy, Ox-eye Sunflower, Wild Iris, Blue Flag Iris, Blue Flax, Dotted Bluegrass, Great Blue Lobelia, Monksheller, Bergamot, Smooth Penstemon, Black-eyed Susan, Green-headed Coneflower, Sweet Black-eyed Susan, Prairie Dock
- Grasses, Sedges, and Rushes: Ohio Goldenrod, Red-top Goldenrod, Bluegrass, Inula, Cudweed, Golden Alexanders

Infiltration Area Plant List

- Infiltration Area (355 sq ft) Plants (Plugs) Price 12" O.C.
- GAASSES: 32 Bicolorish Sedge, 32 Blue Sedge, 38 Dark Green Bulrush
 - FORBS: 17 Prairie Bluetop, 17 New England Aster, 17 White Wild Indigo, 17 Spotted Joe Pye Weed, 17 Purple Coneflower, 17 Sweetseed, 17 Small Penstemon, 17 Small Penstemon, 17 Yellow Coneflower, 17 Sweet Black-eyed Susan, 17 Grass Leaved Goldenrod, 17 Blue-top Aster, 17 Golden Alexander
 - Late Spring Perennials: Carex hystrix, Carex villosoa, Striped Sedges
 - Late Spring Perennials: Aster ericoides, Baptisia alba, Equisetum maculatum, Echinacea purpurea, Hedera autumnalis, Potentilla canadensis, Ratanhia pinnata, Rubus idaeus, Rudbeckia subtomentosa, Aster umbellatus, Zizia aurea

General Notes

- Across labeled "Bark Mulch" to receive a mixture of hardwood shredded bark mulch spread to a 3" depth over pre-emergent.
- Individual trees (and shrub groupings) found along perimeter of property as well as those found within lawn areas to receive bark mulch (and bark beds) consisting of a mixture of hardwood shredded bark mulch spread to a minimum 3" depth (3" wide beds for shrub groupings).
- "Lawn" areas shall be fully-graded and seeded at a rate of 4 lbs. per 1,000 sq. ft.
- Seed shall consist of the following mixture:
 - 20% Bahar Bluegrass
 - 20% Nassau Bluegrass
 - 20% Pennium Creeping Red Fescue
- Moist Meadow seed mix by Prairie Nursery. Install per manufacturer's instructions overlaid with erosion control netting that is then pegged into the soil with metal staples.

LANDSCAPE PLAN

SCALE 1" = 20'

RUEDERBUSH & DEVELOPMENT & CONSTRUCTION

4400 DORTCH DR. MADISON, WISCONSIN 53704
PHONE (608) 248-2012 FAX (608) 248-2028

the bruce company

LANDSCAPE ARCHITECTS
LANDSCAPE CONTRACTORS

2830 PARKWAY STREET
P.O. BOX 620330
MADISON, WI 53762-0330
TEL (608) 835-7041
FAX (608) 831-0266

PROJECT NAME:
SIMPSON PROPERTY
2200 W. BROADWAY
MADISON, WISCONSIN

SHEET TITLE:
LANDSCAPE PLAN

NO.	DATE	REVISIONS	BY
PROJECT NUMBER	6125		
DATE	12-12-06		
DESIGN BY	CPP		
CHECKED BY	D. NELSEN		
DESIGN NUMBER	D. NELSEN		

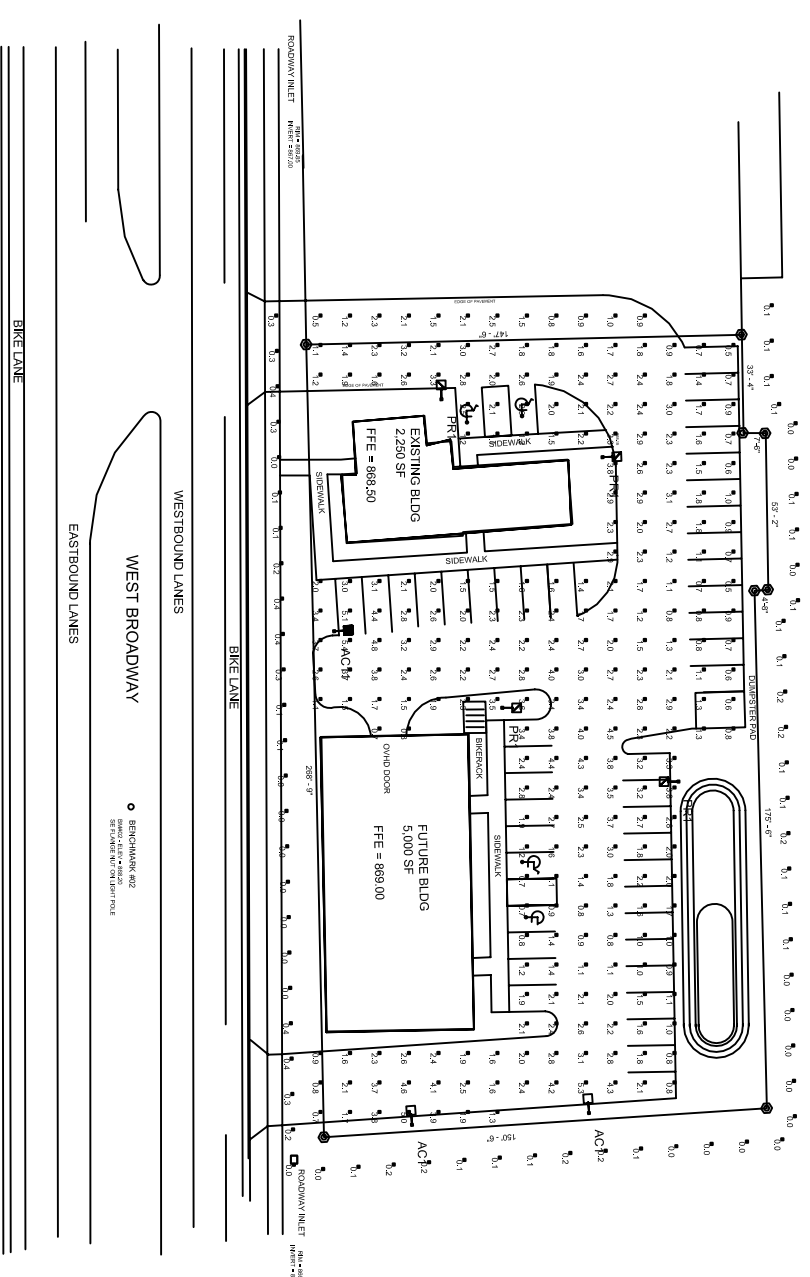
SHEET NUMBER
L1.0

PROJECT NAME
 SIMPSON PROPERTY
 2200 W. BROADWAY
 MADISON, WISCONSIN

SHEET TITLE
 SITE LIGHTING PLAN

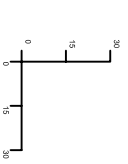
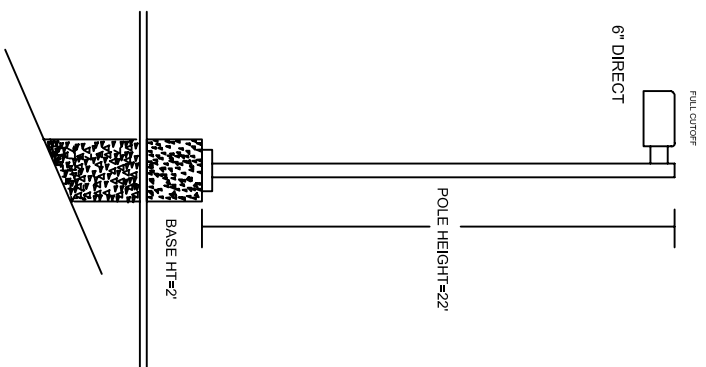
NO.	DATE	REVISIONS	BY
PROJECT NUMBER	6185		
DATE	12-13-06		
DRAWN BY	CC/TJ/DN		
CHECKED BY	D. NELSEN		
DESIGN NUMBER	D. NELSEN		

SHEET NUMBER
C4.0



Luminaire Schedule			
Symbol	Qty	Label	Arrangement
4	4	PRI	SINGLE
1	1	ACT1	SINGLE
2	2	ACT1	SINGLE
			Lumens
			0.800
			22000
			0.800
			22000
			Description
			PR2825-M 250W PSMH
			AC2825-M 250W PSMH
			AC2825-M 250W PSMH W/ SBL-16

POLE (7) PS4S2C1BZ (22' X 4" SQ. STEEL POLE)



Website: www.rudlighting.com
 Email: applications@rudlighting.com

RUD LIGHTING

USA Phone: 800.236.7000
 USA Fax: 800.236.7500
 CAN Phone: 905.671.1991
 CAN Fax: 905.671.3595

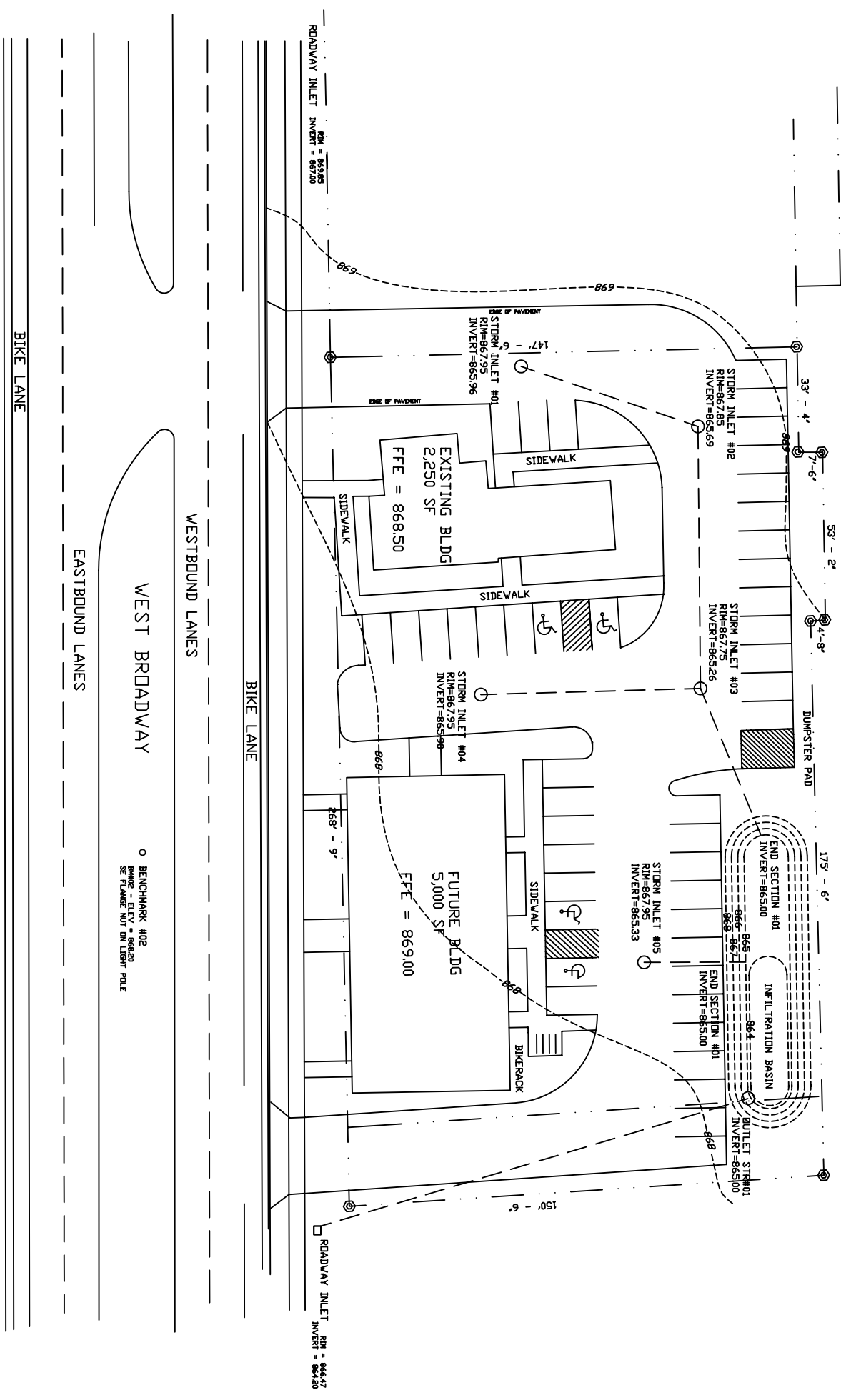
Illumination results shown on this lighting design are based on project parameters provided to Rud Lighting used in conjunction with luminaire test procedures conducted under laboratory conditions. Actual project conditions differing from these design parameters may affect field results. The customer is responsible for verifying compliance with any applicable electrical, lighting, or energy code.

Date: 10/25/2006 Scale: 1"=30' Layout By: Andy

Project Name: ANTLERS RESTAURANT
 Filename: 60406RR1AKCR2.a32

FOOTCANDLES CALCULATED AT GRADE USING MEAN LUMENS

Numeric Summary					
Label	Avg	Max	Min	Avg/Min	Max/Min
TO FROM PROJ LINES @ 4' AEG	0.12	0.4	0.0	N/A	N/A
PLANE @ 0' AEG	2.13	5.4	0.3	4.28	10.80



SITE GRADING/DRAINAGE PLAN

SCALE 1"=20'

PROJECT NAME:
 SIMPSON PROPERTY
 2200 W. BROADWAY
 MADISON, WISCONSIN

SHEET TITLE:
 SITE GRADING/DRAINAGE PLAN

NO.	DATE	REVISIONS	BY
PROJECT NUMBER	6185		
DATE	12-13-06		
DRAWN BY	CC/TC/BN		
CHECKED BY	A. NELSEN		
DESIGN NUMBER	A. NELSEN		

SHEET NUMBER
C3.0

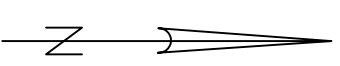
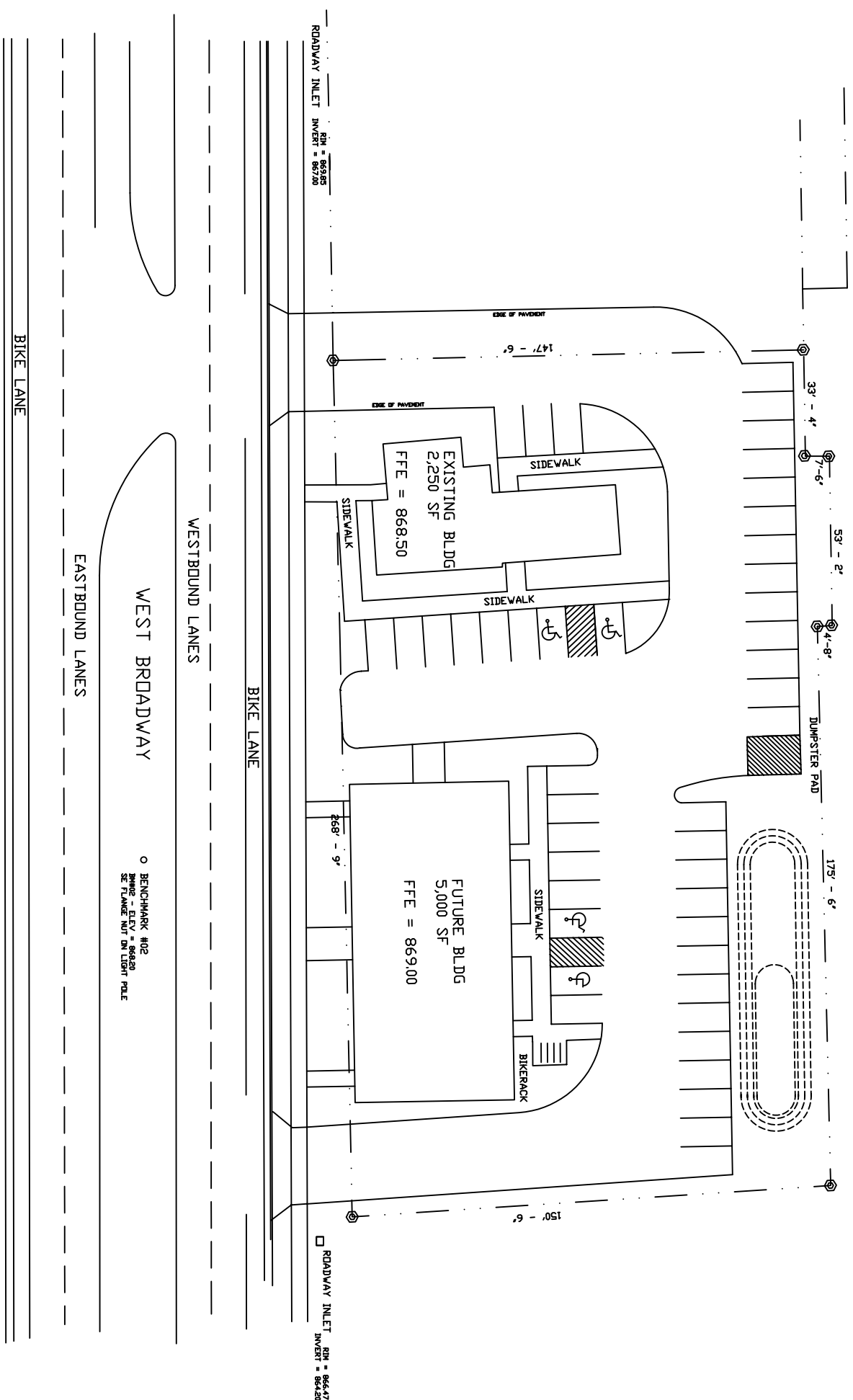
PROJECT NAME:
 SIMPSON PROPERTY
 2200 W. BROADWAY
 MADISON, WISCONSIN

SHEET TITLE:
 SITE LAYOUT PLAN

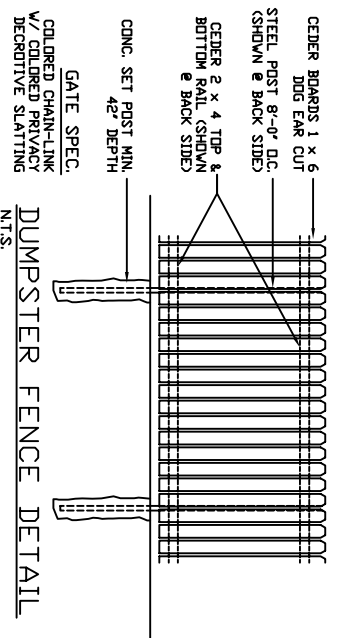
NO.	DATE	REVISIONS	BY
PROJECT NUMBER:	6185		
DATE:	08-08-06		
DRAWN BY:	CC/TJC/JM		
CHECKED BY:	I. NELSEN		
DESIGN NUMBER:	I. NELSEN		

SHEET NUMBER

C2.0



SITE LAYOUT PLAN
 SCALE 1"=20'



PROJECT NAME:
SIMPSON PROPERTY
2200 W. BROADWAY
MADISON, WISCONSIN

SHEET TITLE:
SITE LOCATION MAP

NO.	DATE	REVISIONS	BY
PROJECT NUMBER 6123			
DATE	12-13-06		
DRAWN BY:	CC/TJC/DM		
CHECKED BY:	D. NELSEN		
DESIGN MANAGER:	D. NELSEN		

