



Madison Design Group  
 architecture · engineering · interior design  
 6515 Grand Teton Plaza, Suite 120, Madison, Wisconsin 53719  
 608.829.4444 608.829.4445 dimensionmadison.com

**BURR OAKS SENIOR HOUSING**

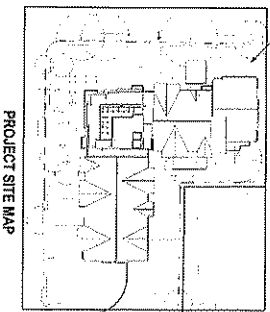
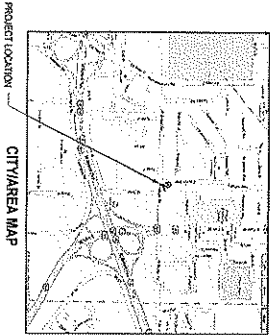
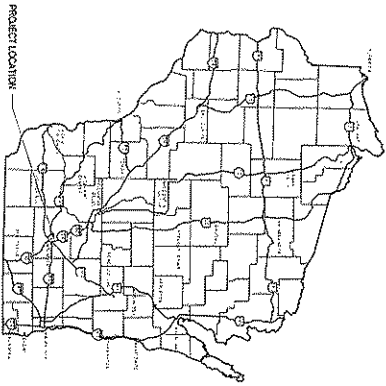
Community Development Authority  
 2411 Cypress Way, Madison, WI 53713

**Architecture & Engineering:**

Dimension IV - Madison Design Group  
 6515 Grand Teton Plaza, Suite 120  
 Madison, WI 53719

**Co-Developer:**

Horizon-Design, Build, Manage  
 5201 East Terrace Drive, Suite 300  
 Madison, WI 53718



Unit Count

Level	Units	Count
FIRST FLOOR	2 BR	4
FIRST FLOOR	Redden (Length 7 BR)	1
FIRST FLOOR	Type A 1 BR	1
FIRST FLOOR	WHEEL 1 BR	3
SECOND FLOOR	1 BR	13
SECOND FLOOR	2 BR	6
THIRD FLOOR	2 BR	5
THIRD FLOOR	2 BR	5
<b>Grand Total:</b>		<b>50</b>

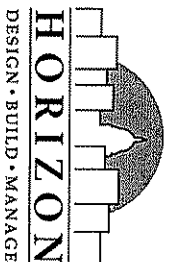
LIST OF FINISHES

Symbol	Finish Name
010	CONCRETE
020	WOOD
030	PAINT
040	GLASS
050	CEILING
060	MECHANICAL
070	ELECTRICAL
080	PLUMBING
090	MECHANICAL
100	ELECTRICAL
110	PLUMBING
120	MECHANICAL
130	ELECTRICAL
140	PLUMBING
150	MECHANICAL
160	ELECTRICAL
170	PLUMBING
180	MECHANICAL
190	ELECTRICAL
200	PLUMBING
210	MECHANICAL
220	ELECTRICAL
230	PLUMBING
240	MECHANICAL
250	ELECTRICAL
260	PLUMBING
270	MECHANICAL
280	ELECTRICAL
290	PLUMBING
300	MECHANICAL

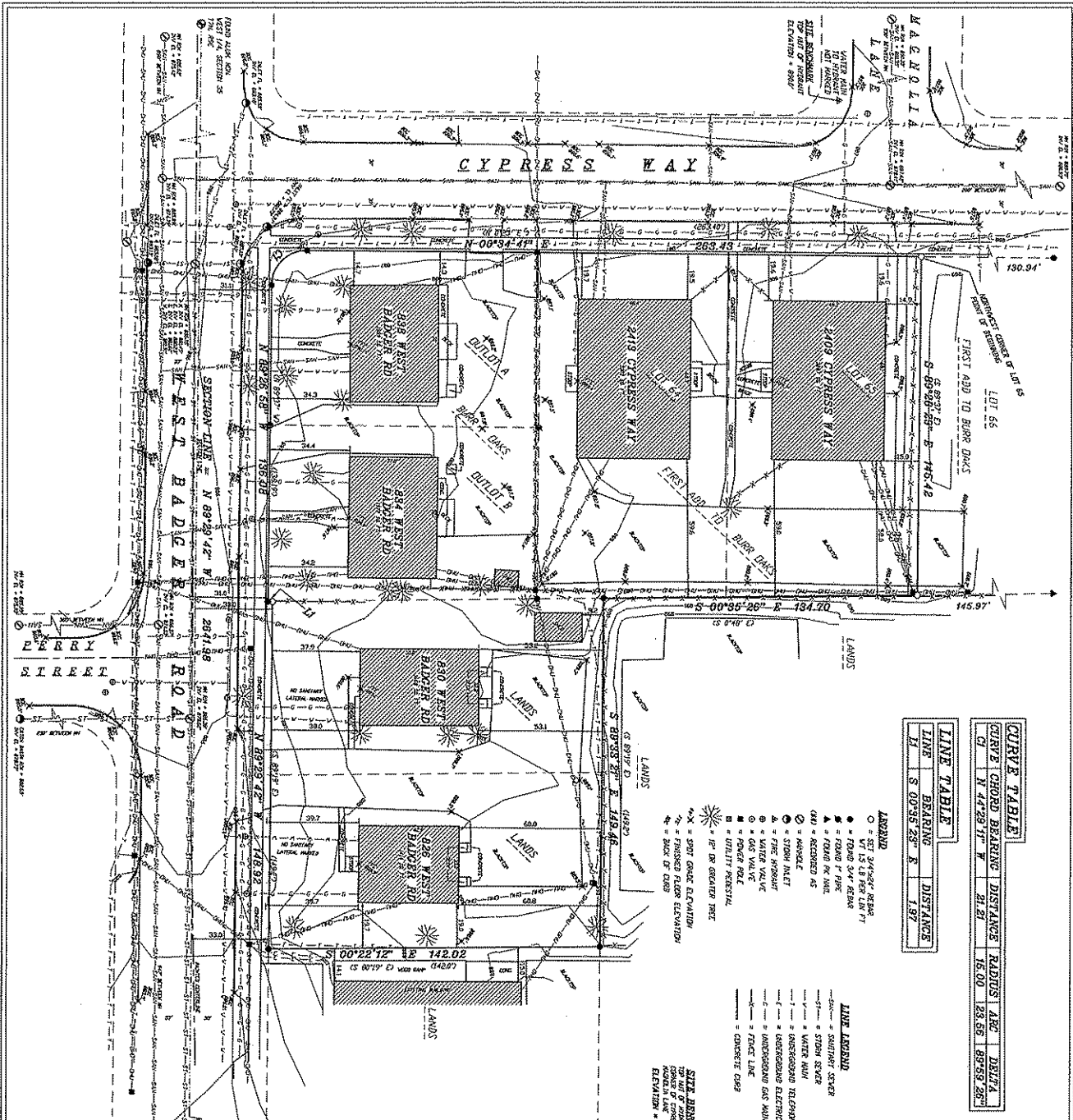
Project # 09091

August 18, 2010

**G0.1**



5



CURVE TABLE			
CHORD BEARING	DISTANCE	RADIUS	ARC DISTANCE
CH	N 44°29'12\"/>		

- ABBREVIATIONS**
- = 1/2\"/>
- LINE ABBREVIATIONS**
- = SURFACE STREET
  - = STONE STREET
  - = WATER MAIN
  - = OVERGROUND TELEPHONE
  - = OVERGROUND GAS MAIN
  - = TRUCK LINE
  - = CONCRETE CURB
- NOTE**
- ✱ = SPOT GREAT ELEVATION
  - ✱ = FINISHED FLOOR ELEVATION
  - ✱ = THICK ET CURB
- SITE BENCHMARK**
- TOP OF 4\"/>

**DESCRIPTION OF TOTAL BOUNDARY:**

A parcel of land located in part of the NE 1/4 of the NW 1/4 of Section 35, 17N, 09E including Lots 64 and 65 of First Addition to Burr Oaks, and Dufflet A and B of Burr Oaks in the City of Mission, Boone County, Wisconsin being more particularly described as follows:

beginning at the northeast corner of said Lot 65, thence S 89°28'59\"/>

**SURVEYOR'S CERTIFICATE:**

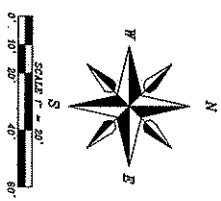
This Topographic Map and survey were performed under my supervision and are prepared according to the official records of the property described and are true and correct to the best of my knowledge and belief. I am a duly Licensed Professional Surveyor in the State of Wisconsin.

By *[Signature]*  
 Williamson Surveying and Associates, LLC  
 2020 S. Adams St., Suite 200  
 Madison, WI 53704  
 Phone: 608-261-7700  
 Fax: 608-261-7701  
 Email: info@williamsonsurveying.com

**WILLIAMSON SURVEYING & ASSOCIATES, LLC**

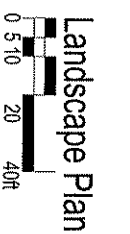
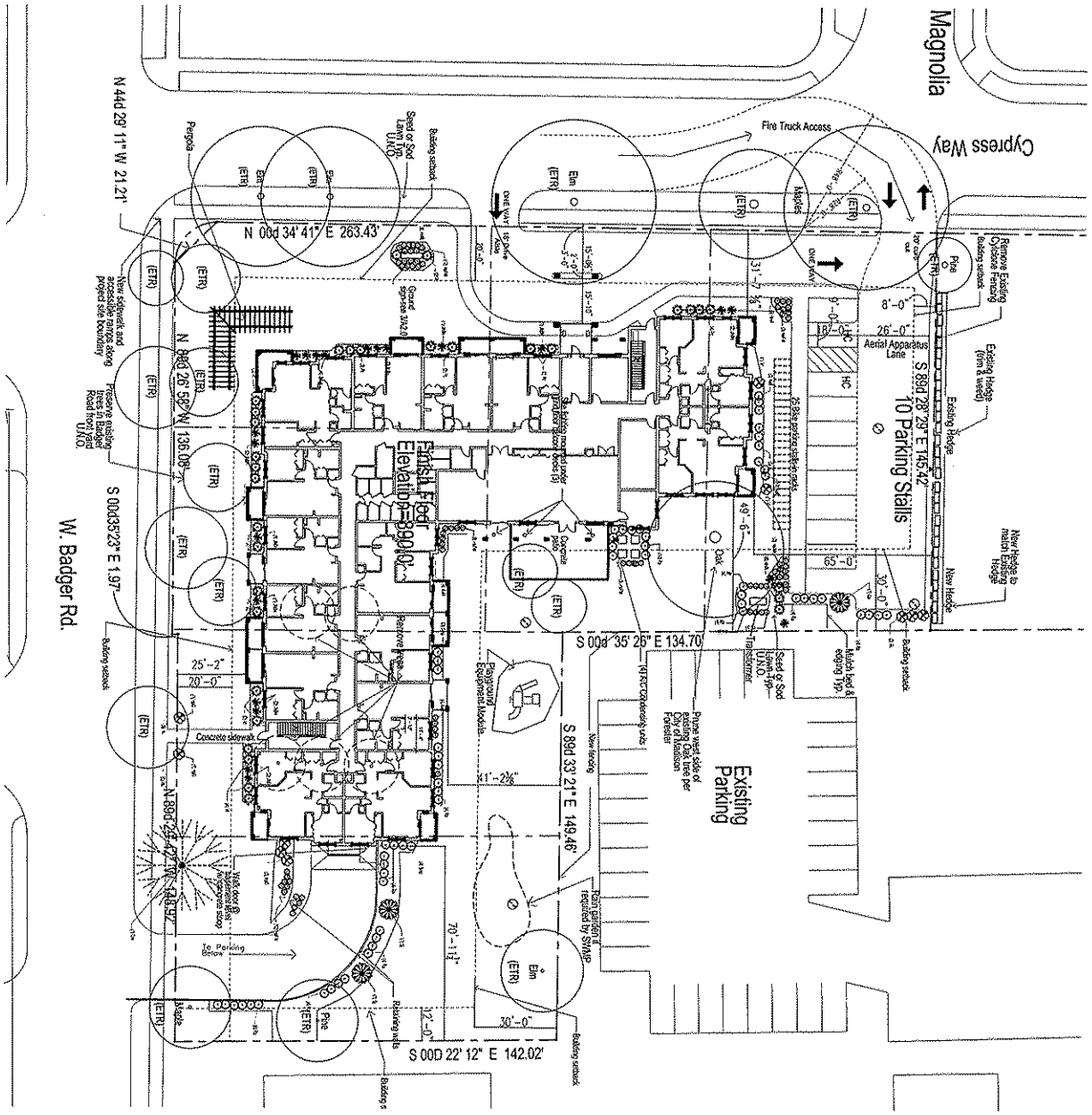
**TOPOGRAPHIC MAP**

DATE OF SURVEY: 10/20/16  
 DATE OF PLOTTING: 11/15/16  
 SCALE: AS SHOWN  
 SHEET: 1 OF 1









Code	Scientific Name	Common Name	Quantity	Size	Root	Remarks
TREES						
S1	Juniperus sp.	Juniper	5	5"	518	
S2	Quercus macrocarpa	White Oak	5	5"	518	
S3	Quercus macrocarpa	White Oak	5	5"	518	
S4	Quercus macrocarpa	White Oak	5	5"	518	
S5	Quercus macrocarpa	White Oak	5	5"	518	
S6	Quercus macrocarpa	White Oak	5	5"	518	
S7	Quercus macrocarpa	White Oak	5	5"	518	
S8	Quercus macrocarpa	White Oak	5	5"	518	
S9	Quercus macrocarpa	White Oak	5	5"	518	
S10	Quercus macrocarpa	White Oak	5	5"	518	
S11	Quercus macrocarpa	White Oak	5	5"	518	
S12	Quercus macrocarpa	White Oak	5	5"	518	
S13	Quercus macrocarpa	White Oak	5	5"	518	
S14	Quercus macrocarpa	White Oak	5	5"	518	
S15	Quercus macrocarpa	White Oak	5	5"	518	
S16	Quercus macrocarpa	White Oak	5	5"	518	
S17	Quercus macrocarpa	White Oak	5	5"	518	
S18	Quercus macrocarpa	White Oak	5	5"	518	
S19	Quercus macrocarpa	White Oak	5	5"	518	
S20	Quercus macrocarpa	White Oak	5	5"	518	
S21	Quercus macrocarpa	White Oak	5	5"	518	
S22	Quercus macrocarpa	White Oak	5	5"	518	
S23	Quercus macrocarpa	White Oak	5	5"	518	
S24	Quercus macrocarpa	White Oak	5	5"	518	
S25	Quercus macrocarpa	White Oak	5	5"	518	
S26	Quercus macrocarpa	White Oak	5	5"	518	
S27	Quercus macrocarpa	White Oak	5	5"	518	
S28	Quercus macrocarpa	White Oak	5	5"	518	
S29	Quercus macrocarpa	White Oak	5	5"	518	
S30	Quercus macrocarpa	White Oak	5	5"	518	
S31	Quercus macrocarpa	White Oak	5	5"	518	
S32	Quercus macrocarpa	White Oak	5	5"	518	
S33	Quercus macrocarpa	White Oak	5	5"	518	
S34	Quercus macrocarpa	White Oak	5	5"	518	
S35	Quercus macrocarpa	White Oak	5	5"	518	
S36	Quercus macrocarpa	White Oak	5	5"	518	
S37	Quercus macrocarpa	White Oak	5	5"	518	
S38	Quercus macrocarpa	White Oak	5	5"	518	
S39	Quercus macrocarpa	White Oak	5	5"	518	
S40	Quercus macrocarpa	White Oak	5	5"	518	
S41	Quercus macrocarpa	White Oak	5	5"	518	
S42	Quercus macrocarpa	White Oak	5	5"	518	
S43	Quercus macrocarpa	White Oak	5	5"	518	
S44	Quercus macrocarpa	White Oak	5	5"	518	
S45	Quercus macrocarpa	White Oak	5	5"	518	
S46	Quercus macrocarpa	White Oak	5	5"	518	
S47	Quercus macrocarpa	White Oak	5	5"	518	
S48	Quercus macrocarpa	White Oak	5	5"	518	
S49	Quercus macrocarpa	White Oak	5	5"	518	
S50	Quercus macrocarpa	White Oak	5	5"	518	
S51	Quercus macrocarpa	White Oak	5	5"	518	
S52	Quercus macrocarpa	White Oak	5	5"	518	
S53	Quercus macrocarpa	White Oak	5	5"	518	
S54	Quercus macrocarpa	White Oak	5	5"	518	
S55	Quercus macrocarpa	White Oak	5	5"	518	
S56	Quercus macrocarpa	White Oak	5	5"	518	
S57	Quercus macrocarpa	White Oak	5	5"	518	
S58	Quercus macrocarpa	White Oak	5	5"	518	
S59	Quercus macrocarpa	White Oak	5	5"	518	
S60	Quercus macrocarpa	White Oak	5	5"	518	
S61	Quercus macrocarpa	White Oak	5	5"	518	
S62	Quercus macrocarpa	White Oak	5	5"	518	
S63	Quercus macrocarpa	White Oak	5	5"	518	
S64	Quercus macrocarpa	White Oak	5	5"	518	
S65	Quercus macrocarpa	White Oak	5	5"	518	
S66	Quercus macrocarpa	White Oak	5	5"	518	
S67	Quercus macrocarpa	White Oak	5	5"	518	
S68	Quercus macrocarpa	White Oak	5	5"	518	
S69	Quercus macrocarpa	White Oak	5	5"	518	
S70	Quercus macrocarpa	White Oak	5	5"	518	
S71	Quercus macrocarpa	White Oak	5	5"	518	
S72	Quercus macrocarpa	White Oak	5	5"	518	
S73	Quercus macrocarpa	White Oak	5	5"	518	
S74	Quercus macrocarpa	White Oak	5	5"	518	
S75	Quercus macrocarpa	White Oak	5	5"	518	
S76	Quercus macrocarpa	White Oak	5	5"	518	
S77	Quercus macrocarpa	White Oak	5	5"	518	
S78	Quercus macrocarpa	White Oak	5	5"	518	
S79	Quercus macrocarpa	White Oak	5	5"	518	
S80	Quercus macrocarpa	White Oak	5	5"	518	
S81	Quercus macrocarpa	White Oak	5	5"	518	
S82	Quercus macrocarpa	White Oak	5	5"	518	
S83	Quercus macrocarpa	White Oak	5	5"	518	
S84	Quercus macrocarpa	White Oak	5	5"	518	
S85	Quercus macrocarpa	White Oak	5	5"	518	
S86	Quercus macrocarpa	White Oak	5	5"	518	
S87	Quercus macrocarpa	White Oak	5	5"	518	
S88	Quercus macrocarpa	White Oak	5	5"	518	
S89	Quercus macrocarpa	White Oak	5	5"	518	
S90	Quercus macrocarpa	White Oak	5	5"	518	
S91	Quercus macrocarpa	White Oak	5	5"	518	
S92	Quercus macrocarpa	White Oak	5	5"	518	
S93	Quercus macrocarpa	White Oak	5	5"	518	
S94	Quercus macrocarpa	White Oak	5	5"	518	
S95	Quercus macrocarpa	White Oak	5	5"	518	
S96	Quercus macrocarpa	White Oak	5	5"	518	
S97	Quercus macrocarpa	White Oak	5	5"	518	
S98	Quercus macrocarpa	White Oak	5	5"	518	
S99	Quercus macrocarpa	White Oak	5	5"	518	
S100	Quercus macrocarpa	White Oak	5	5"	518	

**DIMENSION**  
 Madison Design Group  
 architect • engineer • interior design  
 655 Good Hope Plaza, Ste 102  
 Madison, Wisconsin 53719  
 608.258.4444 608.258.4445  
 dm@dimension.com

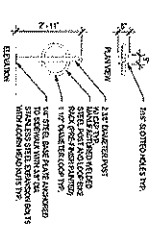
**HORIZON**  
 DESIGN • BUILD • MANAGE

**BURR OAKS HOUSING**

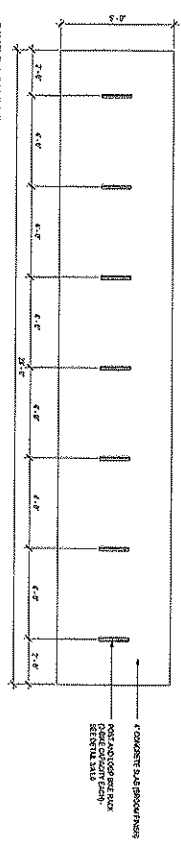
**COMMUNITY DEVELOPMENT AUTHORITY**  
 2411 CYPRESS WAY

DATE OF ISSUE: AUGUST 18, 2010  
**PRELIMINARY NOT FOR CONSTRUCTION**  
 PROJECT #: 06991  
**LANDSCAPE PLAN**  
**L1.0**

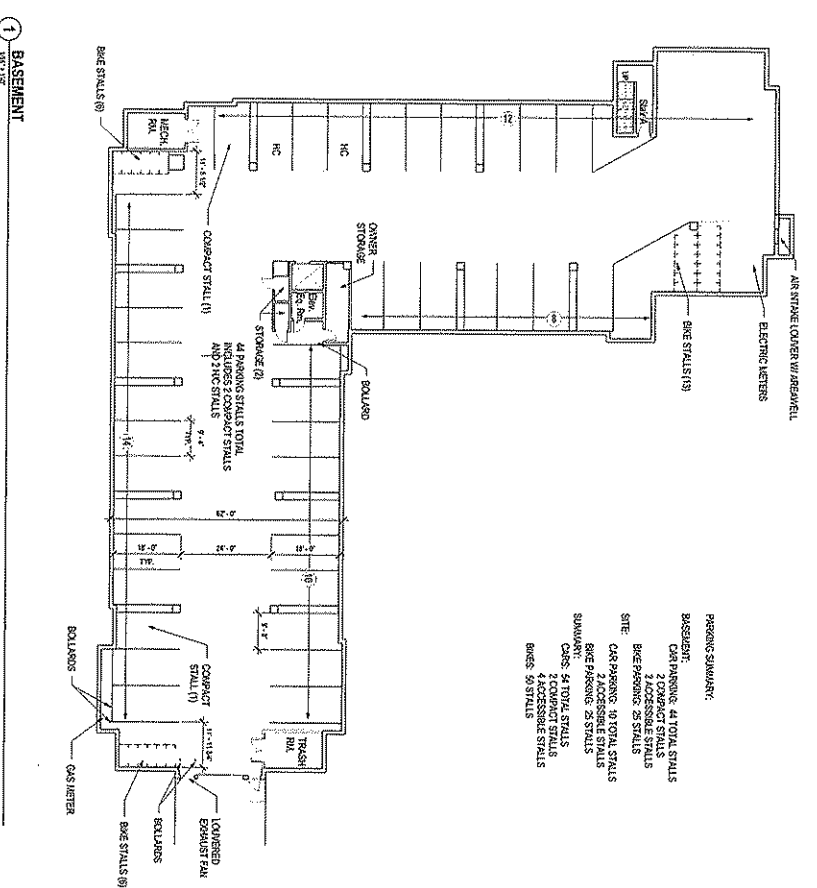
15



3 BIKE RACK DETAIL 2  
SCALE: 1/4\"/>



2 BIKE RACK DETAIL 1  
SCALE: 1/4\"/>



- PARKING SUMMARY:
- BASEMENT:
    - CAR PARKING: 44 TOTAL STALLS
    - 2 COMPACT STALLS
    - 2 ACCESSIBLE STALLS
  - SITE:
    - CAR PARKING: 10 TOTAL STALLS
    - 7 ACCESSIBLE STALLS
    - BIKE PARKING: 29 STALLS
  - SUMMARY:
    - CARS: 54 TOTAL STALLS
    - 4 ACCESSIBLE STALLS
    - 2 COMPACT STALLS
    - BIKES: 59 STALLS

1 BASEMENT PLAN  
SCALE: 1/4\"/>

M

**DIMENSION**  
 Architects • Engineers • Interiors • Design  
 6315 Grand View Road, Suite 100  
 Madison, Wisconsin 53718  
 608.252.4444 608.252.4242  
 info@dimension.com

**HORIZON**  
 DESIGN • BUILD • MANAGE

**BURR OAKS SENIOR HOUSING**  
 Community Development Authority  
 2411 Cypress Way / Madison WI  
 53713

DATE OF ISSUE: August 18, 2010

**PRELIMINARY NOT FOR CONSTRUCTION**

PROJECT # Project # 090231  
**BASEMENT FLOOR PLAN**

**A1.0**

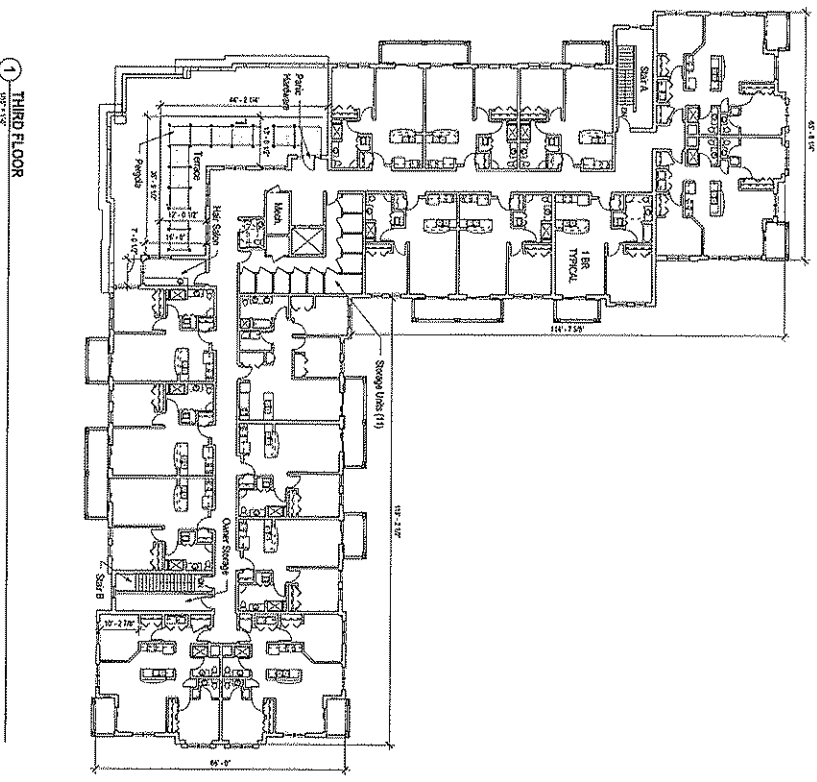






5

- OVERLAPPING UNIT SUMMARY:
- 1. 30 TOTAL UNITS
  - (17) - 2-BEDROOM UNITS
  - (13) - 1-BEDROOM UNITS
  - 2. 102 SQUARED FEET
  - (13) - 1-BEDROOM UNITS
  - (8) - 1-BEDROOM UNITS
  - 3. SECOND FLOOR: 19 UNITS
  - (17) - 2-BEDROOM UNITS
  - (2) - 1-BEDROOM UNITS
  - 4. THIRD FLOOR: 15 UNITS
  - (9) - 2-BEDROOM UNITS
  - (6) - 1-BEDROOM UNITS



① THIRD FLOOR  
2007-04

**DIMENSION**  
 Madison Design Group  
 architecture • engineering • interior design

8015 Grand View Road, 324 170  
 Madison, Wisconsin 53718  
 608.263.4444 608.263.4445  
 dimension@dimension.com



**BURR OAKS SENIOR HOUSING**

Community Development Authority  
 2411 Cypress Way Madison WI  
 53713

**PRELIMINARY NOT FOR CONSTRUCTION**

PROJECT # 09991 Project # 09991

THIRD FLOOR PLAN

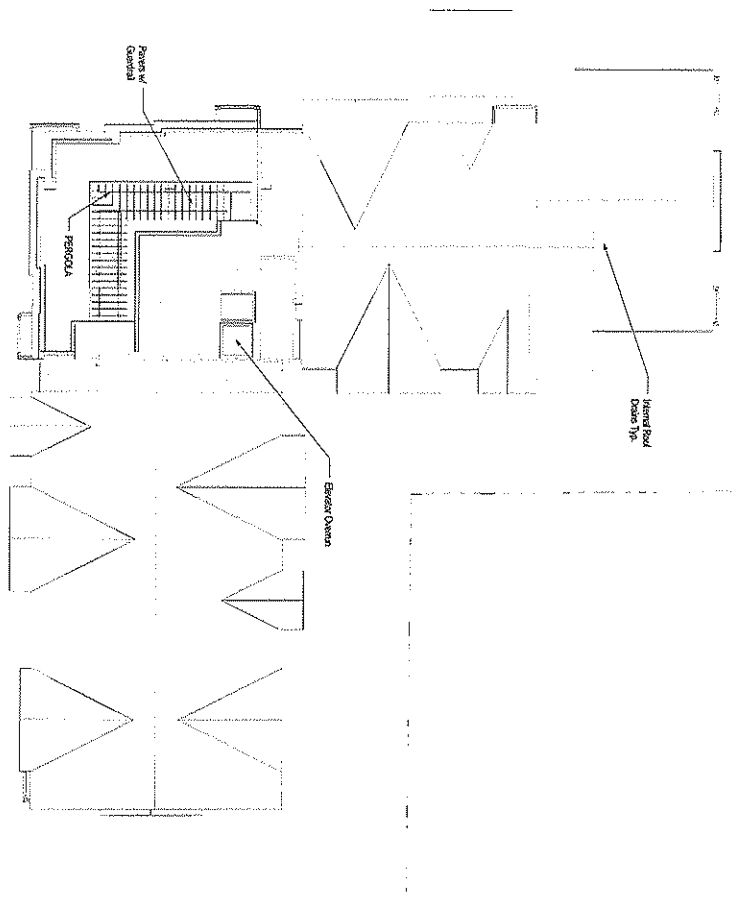
**A1.3**

15

**DIMENSION**  
 Madison Design Group  
 architecture - engineering - interior design  
 635 Grand Tower Plaza, Suite 120  
 Madison, Wisconsin 53705  
 608.263.4444 608.263.4445  
 dimension@dimension.com



**BURR OAKS SENIOR HOUSING**  
 Community Development Authority  
 2411 Cypress Way, Madison, WI  
 53713



1 ROOF PLAN  
 1/8" = 1'-0"



DATE OF ISSUE August 18, 2010  
**PRELIMINARY NOT FOR CONSTRUCTION**

PROJECT # Project # 09991  
 ROOF PLAN

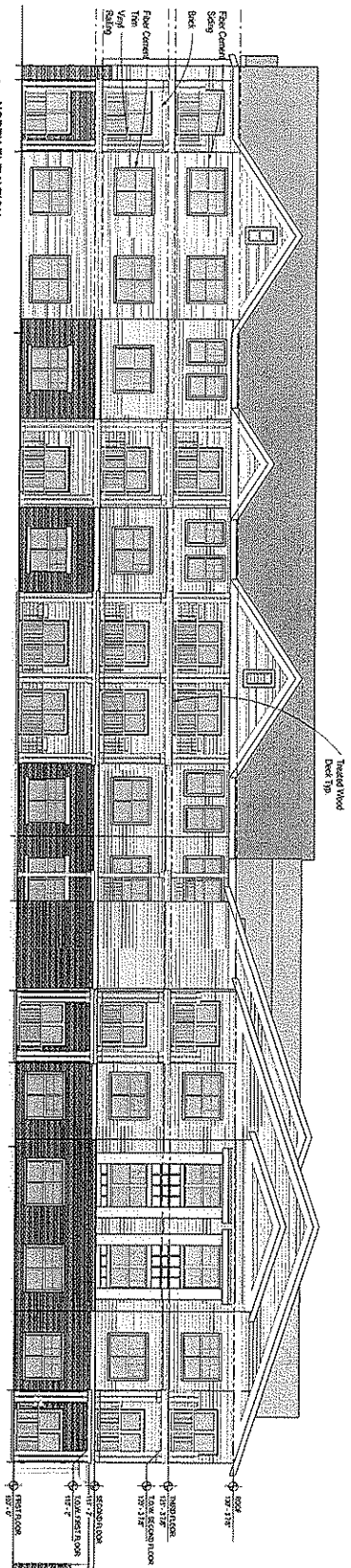
**A1.4**



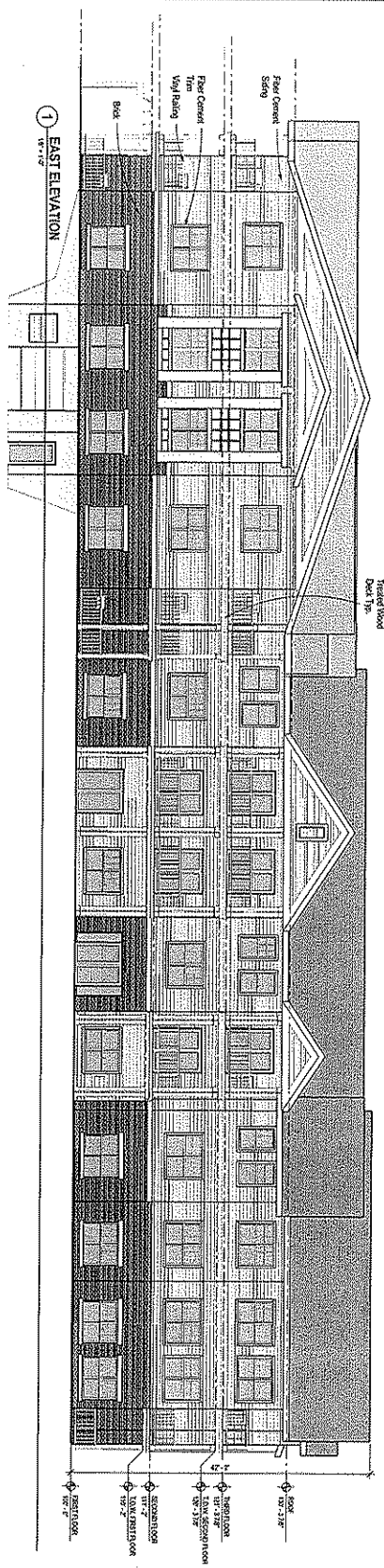
M

Exterior Material Schedule

Exterior Material	Manufacturer	Color
Windows	Supercast	White
Paint Doors	Supercast	White
2nd Floor Ceiling	Acorn	White
3rd Floor Ceiling	Acorn	White
Exterior Concrete	Shoverat	Lightstone
Mortar	James Hardie	Sandstone Grey
First Cement Stairs	James Hardie	White
First Cement Stairs	James Hardie	White
Apartment Ballog	Pyron Centre	White
Wood Deck Panels	Pyron Centre	White
Wood Deck Fencing	Pyron	White
		White
		White



2 NORTH ELEVATION  
15-11-22



1 EAST ELEVATION  
15-11-22

**DIMENSION**  
— Madison Design Group  
architecture • engineering • interior design

655 Grand View Plaza, Suite 110  
Madison, Wisconsin 53718  
608.263.4444 608.263.4445  
design@dimension.com



**BURR OAKS SENIOR HOUSING**  
Community Development Authority  
2411 Cypress Way, Madison WI  
53713

DATE OF ISSUE: August 18, 2010

**PRELIMINARY NOT FOR CONSTRUCTION**

PROJECT # 09991

EXTERIOR ELEVATIONS

**A2.1**

10

**DIMENSION**  
Madison Design Group  
architecture • engineering • interior design

616 Grand Island Road, Suite 100  
Madison, Wisconsin 53705  
608.262.4444 608.262.4445  
dimension@dimension.com



**BURR OAKS SENIOR HOUSING**

Community Development Authority  
2411 Cypress Way Madison WI  
53713

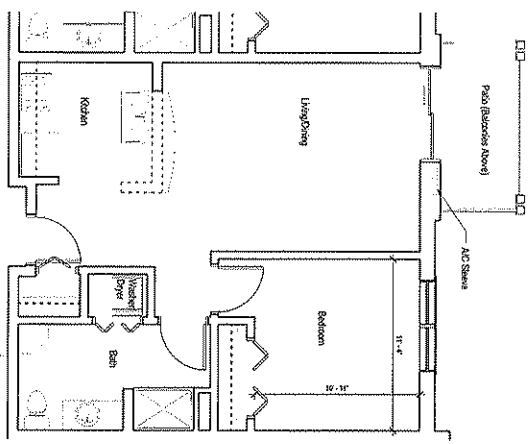
DATE OF ISSUE: August 18, 2010

**PRELIMINARY  
NOT FOR  
CONSTRUCTION**

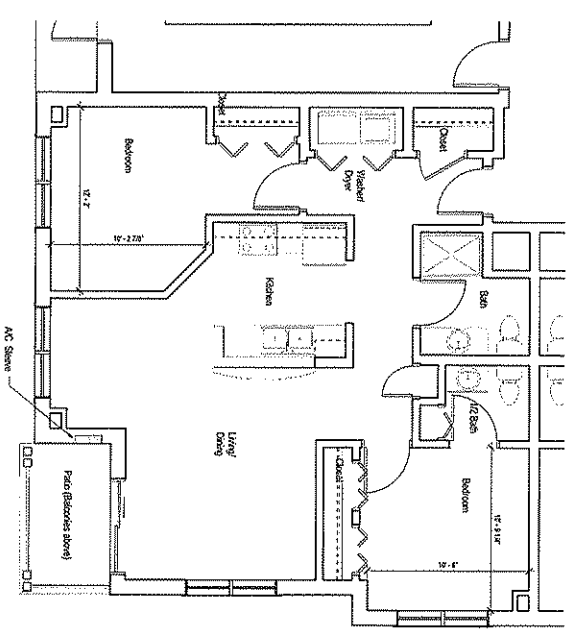
PROJECT # 09891

LARGE SCALE  
FLOOR PLANS

**A5.0**



1 Typical 1 Bedroom Unit  
14'-11/2"



2 Typical 2 Bedroom Unit  
14'-11/2"

**Burr Oaks Apartments**

