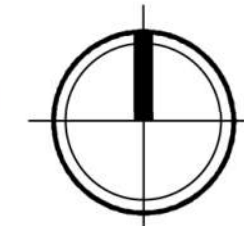


Locator Map
1224 S. Park Street
Madison, WI





Site Plan
1224 S. Park Street
Madison, WI
August 27, 2020

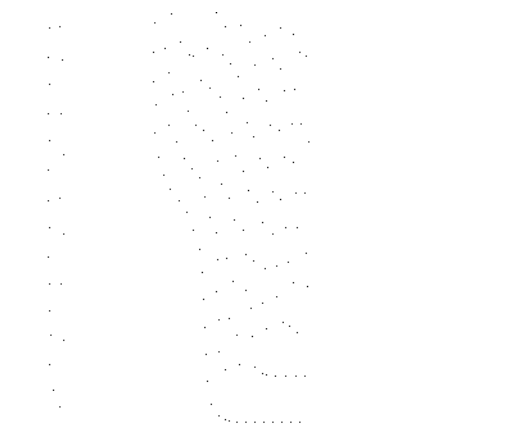




knothe • bruce
ARCHITECTS

knothebruce.com 608.836.3690
7601 University Ave. • Suite 201 • Middleton, WI 53562

KEY PLAN



ISSUED
Issued for UDC Informational - August 19, 2020



1 COLORED - North
A-2.3 N.T.S.

PROJECT TITLE
**PARK STREET
DEVELOPMENT**

1224 S Park St
Madison, WI

SHEET TITLE
**EXTERIOR
ELEVATIONS -
COLORED**

SHEET NUMBER

A-2.3

PROJECT NUMBER 2031

© Knothe & Bruce Architects, LLC



1 COLORED - East
A-2.4 N.T.S.



2 COLORED - West
A-2.4 N.T.S.



knothe • bruce
ARCHITECTS

knothebruce.com 608.836.3690
7601 University Ave. • Suite 201 • Middleton, WI 53562

KEY PLAN

ISSUED
Issued for UDC Informational - August 19, 2020

PROJECT TITLE
**PARK STREET
DEVELOPMENT**

1224 S Park St
Madison, WI
SHEET TITLE
**EXTERIOR
ELEVATIONS -
COLORED**

SHEET NUMBER

A-2.4

PROJECT NUMBER 2031
© Knothe & Bruce Architects, LLC



PARK STREET DEVELOPMENT

1224 S. PARK STREET
MADISON, WI





PARK STREET DEVELOPMENT

1224 S. PARK STREET
MADISON, WI





PARK STREET DEVELOPMENT

1224 S. PARK STREET
MADISON, WI





PARK STREET DEVELOPMENT

1224 S. PARK STREET
MADISON, WI

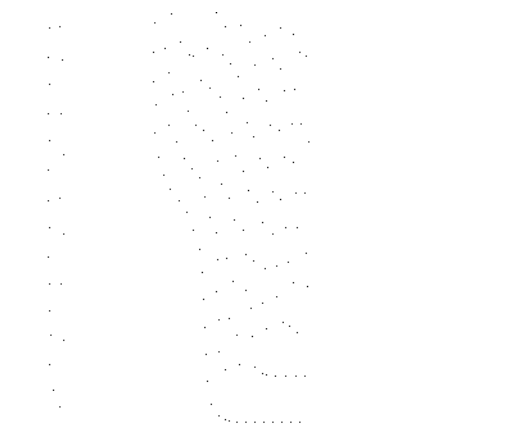




knothe • bruce
ARCHITECTS

knothebruce.com 608.836.3690
7601 University Ave. • Suite 201 • Middleton, WI 53562

KEY PLAN



ISSUED
August 26, 2020



- Top of Roof 59'-11 5/8"
- FIFTH FLOOR 47'-11 5/8"
- FOURTH FLOOR 36'-9 3/4"
- THIRD FLOOR 25'-1 7/8"
- SECOND FLOOR 14'-0"
- FIRST FLOOR 0"
- BASEMENT -10'-0"

- COMPOSITE TRIM
- COMPOSITE SIDING
- BRICK SOLDIER COURSING
- ALUMINIUM RAILINGS
- BRICK VENEER #1
- COMPOSITE PANELS
- COMPOSITE WINDOWS
- CAST STONE BANDS/HEADERS/SILLS
- CAST STONE VENEER
- BRICK VENEER #2
- CAST STONE BASE

1 COLORED - North
A-2.3 N.T.S.

PROJECT TITLE
**PARK STREET
DEVELOPMENT**

1224 S Park St
Madison, WI

SHEET TITLE
**EXTERIOR
ELEVATIONS -
COLORED**

SHEET NUMBER

A-2.3

PROJECT NUMBER 0000

© Knothe & Bruce Architects, LLC



1 COLORED - East
A-2.4 N.T.S.



2 COLORED - West
A-2.4 N.T.S.



knothe • bruce
ARCHITECTS

knothebruce.com 608.836.3690
7601 University Ave. • Suite 201 • Middleton, WI 53562

KEY PLAN

ISSUED
08/18/20

PROJECT TITLE
**PARK STREET
DEVELOPMENT**

1224 S Park St
Madison, WI

SHEET TITLE
**EXTERIOR
ELEVATIONS -
COLORED**

SHEET NUMBER

A-2.4

PROJECT NUMBER 0000

© Knothe & Bruce Architects, LLC



PARK STREET DEVELOPMENT

1224 S. PARK STREET
MADISON, WI





PARK STREET DEVELOPMENT

1224 S. PARK STREET
MADISON, WI





SIGNAGE

SIGNAGE SIGNAGE

PARK STREET DEVELOPMENT

1224 S. PARK STREET
MADISON, WI

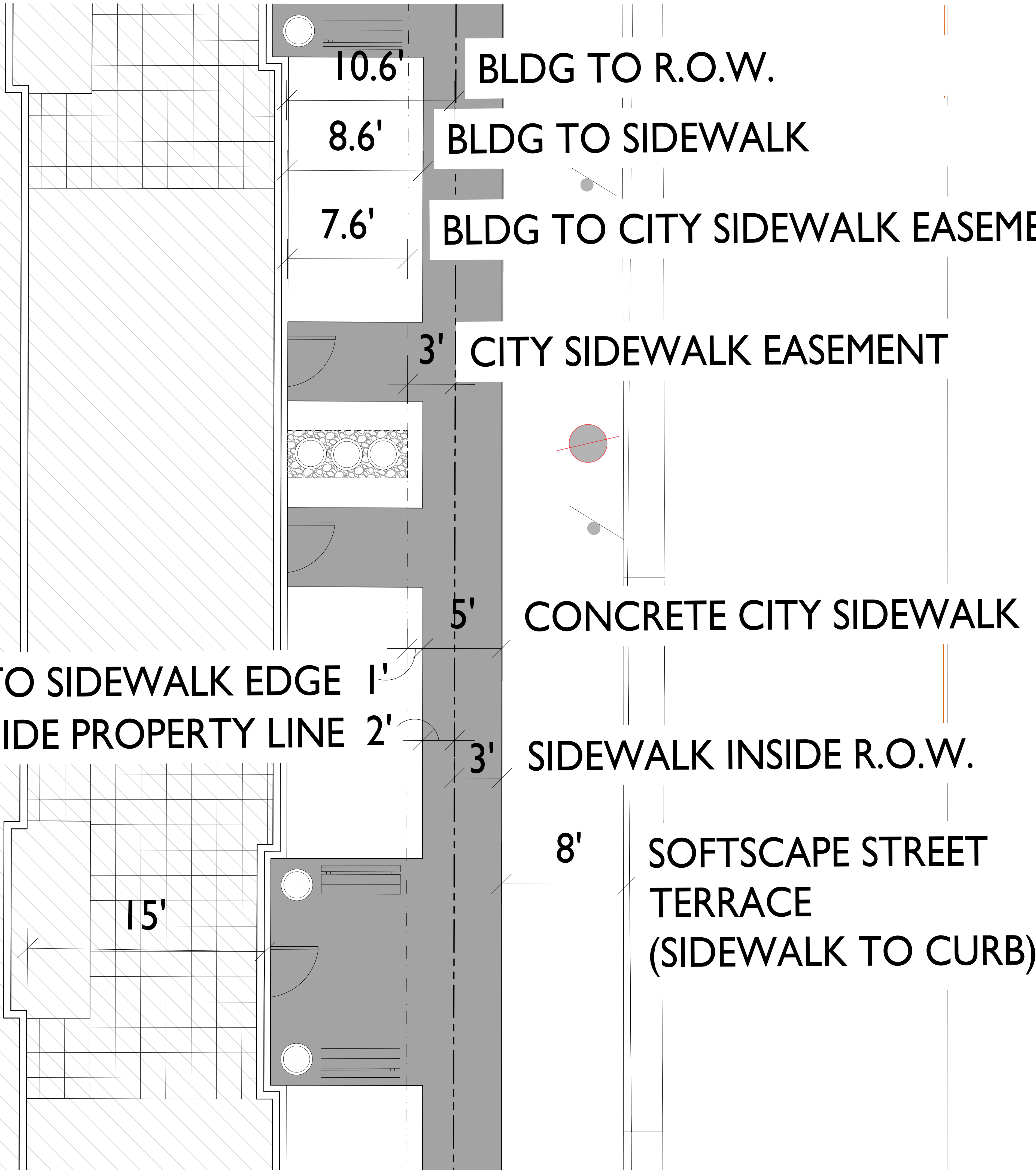




PARK STREET DEVELOPMENT

1224 S. PARK STREET
MADISON, WI





10.6' BLDG TO R.O.W.

8.6' BLDG TO SIDEWALK

7.6' BLDG TO CITY SIDEWALK EASEMENT

3' CITY SIDEWALK EASEMENT

5' CONCRETE CITY SIDEWALK

1' SIDEWALK EASEMENT TO SIDEWALK EDGE

2' SIDEWALK INSIDE PROPERTY LINE

3' SIDEWALK INSIDE R.O.W.

8' SOFTSCAPE STREET TERRACE (SIDEWALK TO CURB)

15'

SOUTH PARK STREET (U.S.H. '151



knothe • bruce
ARCHITECTS

Phone: 7601 University Ave., Ste 201
608.836.3690 Middleton, WI 53562

ISSUED
Issued for UDC Informational - August 19, 2020

PROJECT TITLE
**PARK STREET
DEVELOPMENT**

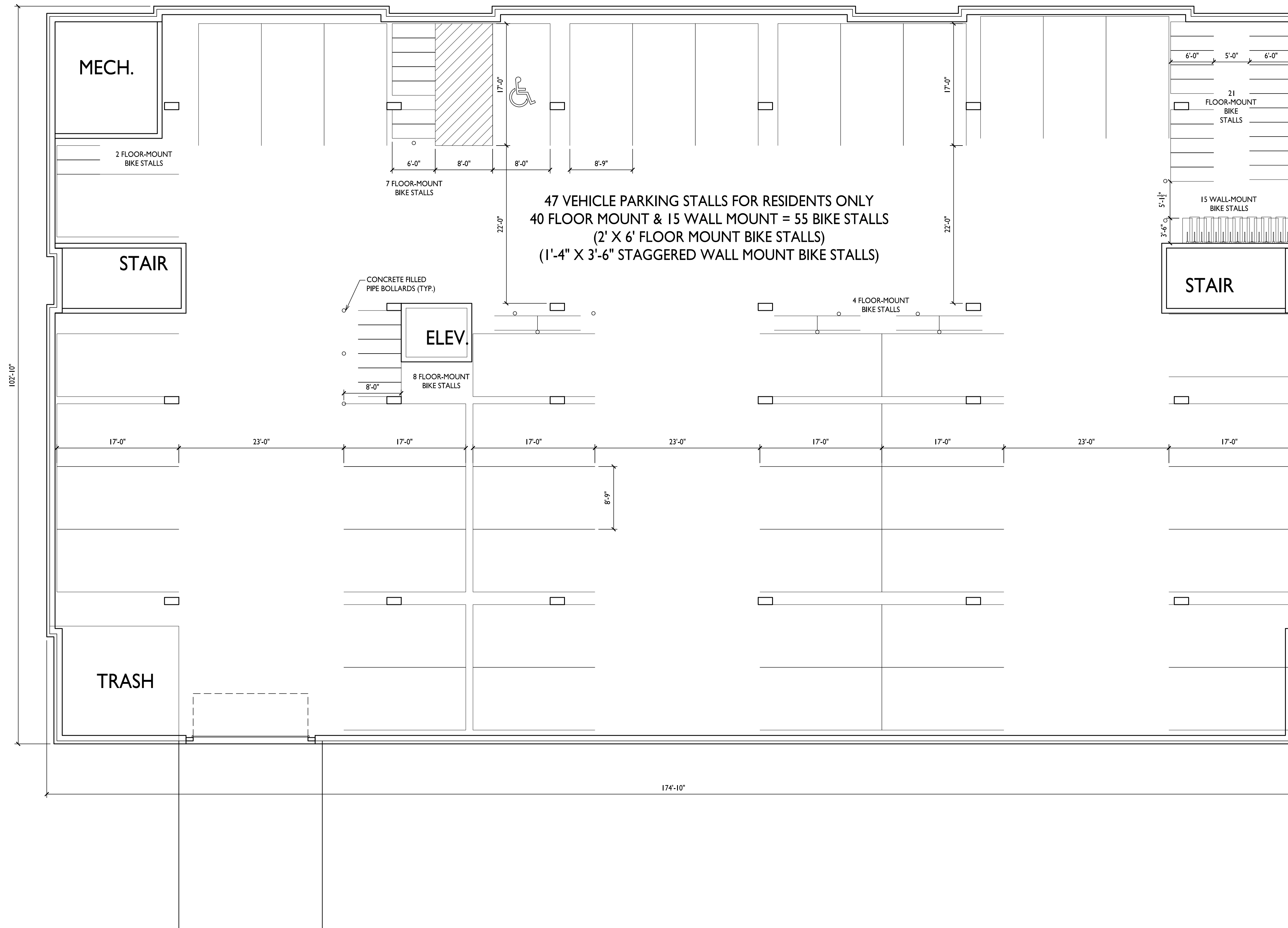
1224 S. Park Street
Madison, Wisconsin
SHEET TITLE
**Basement Floor
Plan**

SHEET NUMBER

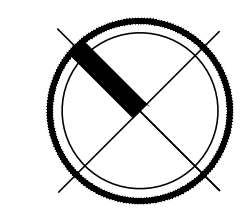
A-1.0

PROJECT NO. **2031**

© Knothe & Bruce Architects, LLC



1 BASEMENT FLOOR PLAN
A-1.0 1/8" = 1'-0"

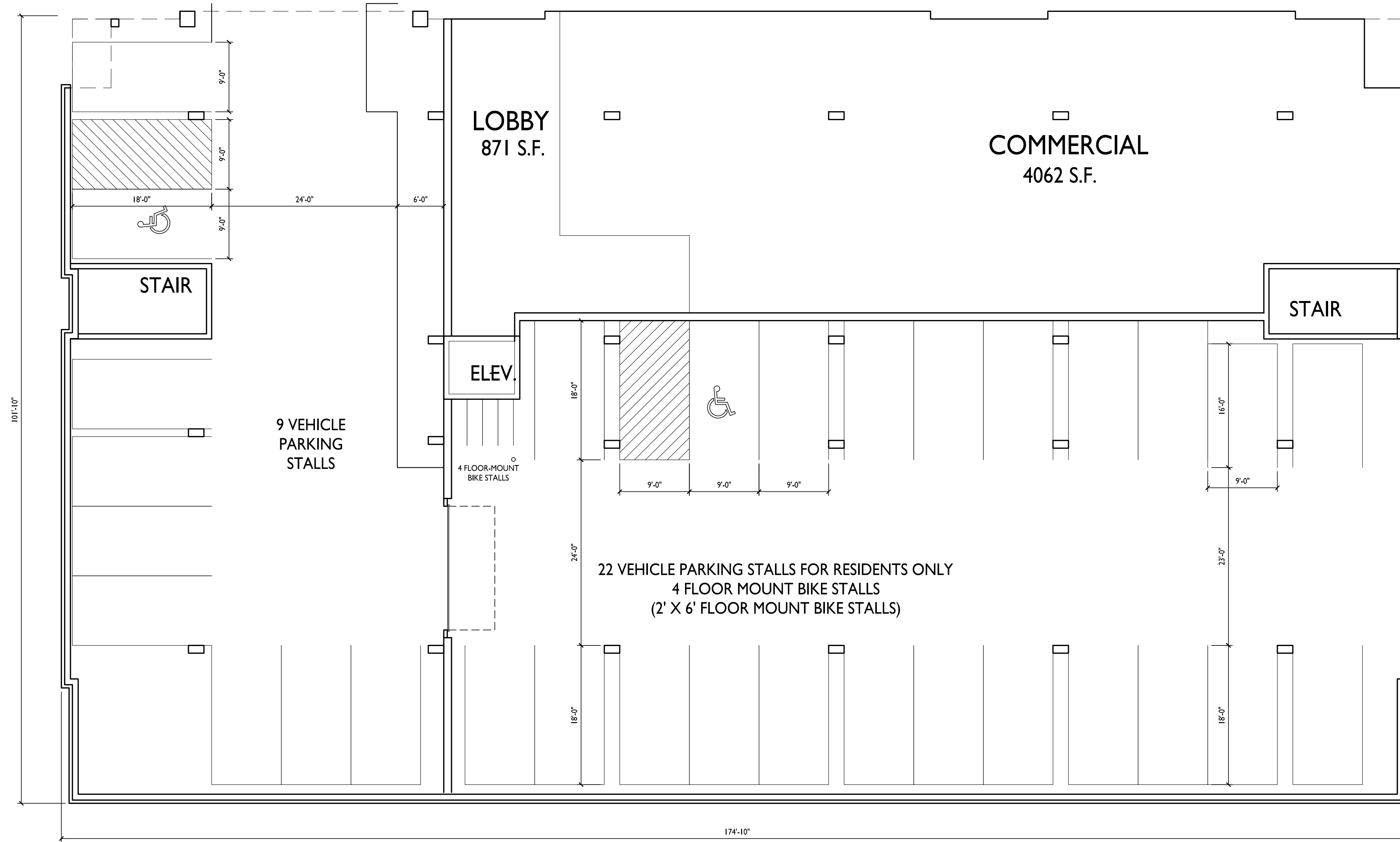


PARK STREET



knothe • bruce
ARCHITECTS

Phone: 7601 University Ave., Ste 201
608.836.3690 Middleton, WI 53562



ISSUED
Issued for UDC Informational - August 19, 2020

PROJECT TITLE
**PARK STREET
DEVELOPMENT**

UNIT MIX;	
STUDIO	10
ONE BEDROOM	37
TWO BEDROOM	12
	59
PARKING:	
UNDERGROUND	69
SURFACE	9
	78
PARKING RATIO:	1.32

1224 S. Park Street
Madison, Wisconsin
SHEET TITLE
First Floor Plan

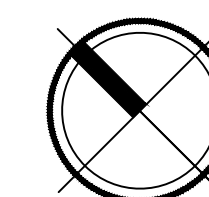
SHEET NUMBER

A-1.1

PROJECT NO. **2031**

© Knothe & Bruce Architects, LLC

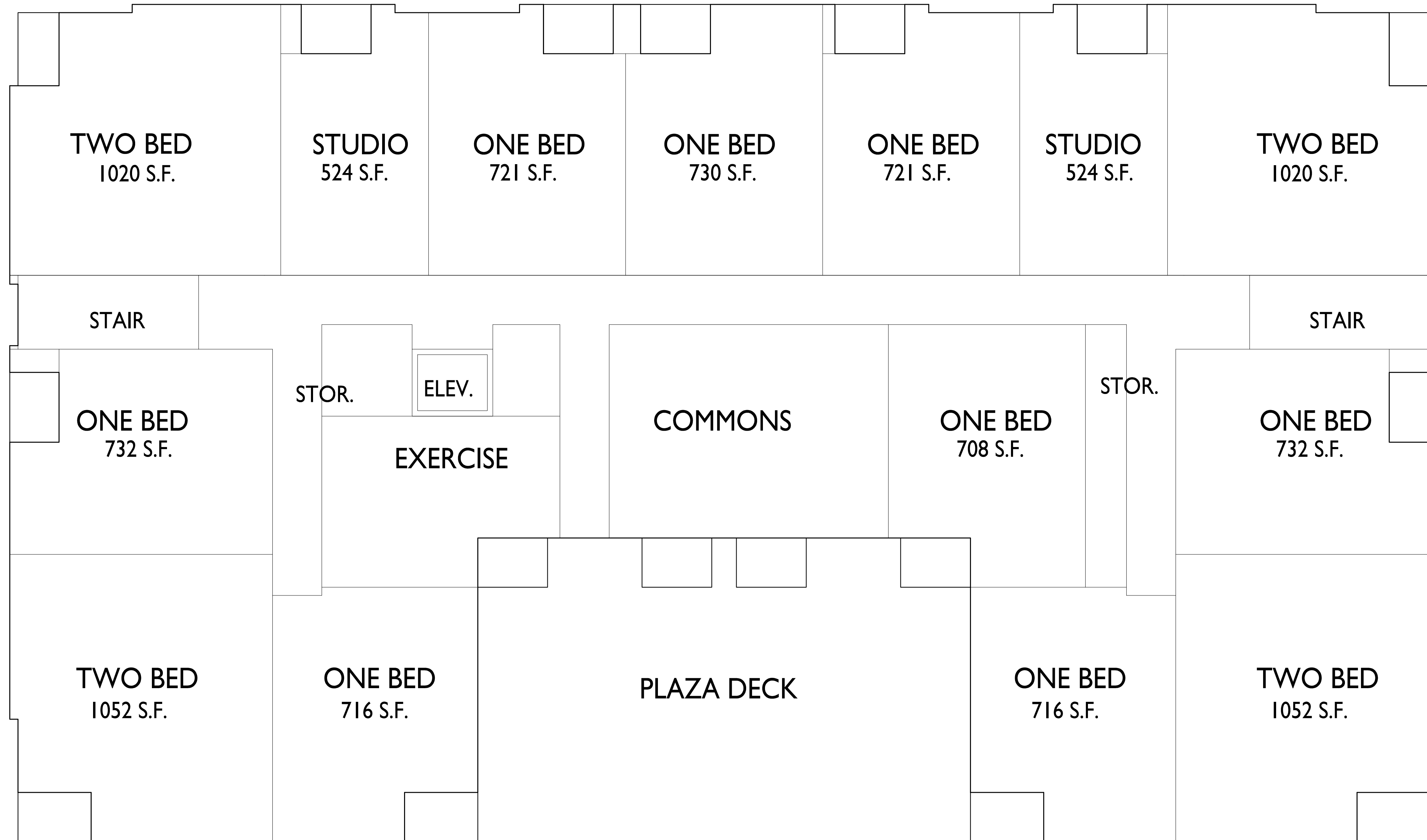
1 FIRST FLOOR PLAN
A-1.1 1/8" = 1'-0"





knothe • bruce
ARCHITECTS

Phone: 7601 University Ave., Ste 201
608.836.3690 Middleton, WI 53562



ISSUED
Issued for UDC Informational - August 19, 2020

PROJECT TITLE
PARK STREET
DEVELOPMENT

1224 S. Park Street
Madison, Wisconsin
SHEET TITLE
Second Floor Plan

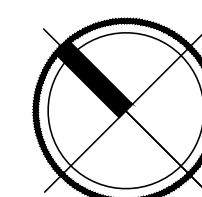
SHEET NUMBER

A-1.2

PROJECT NO. 2031

© Knothe & Bruce Architects, LLC

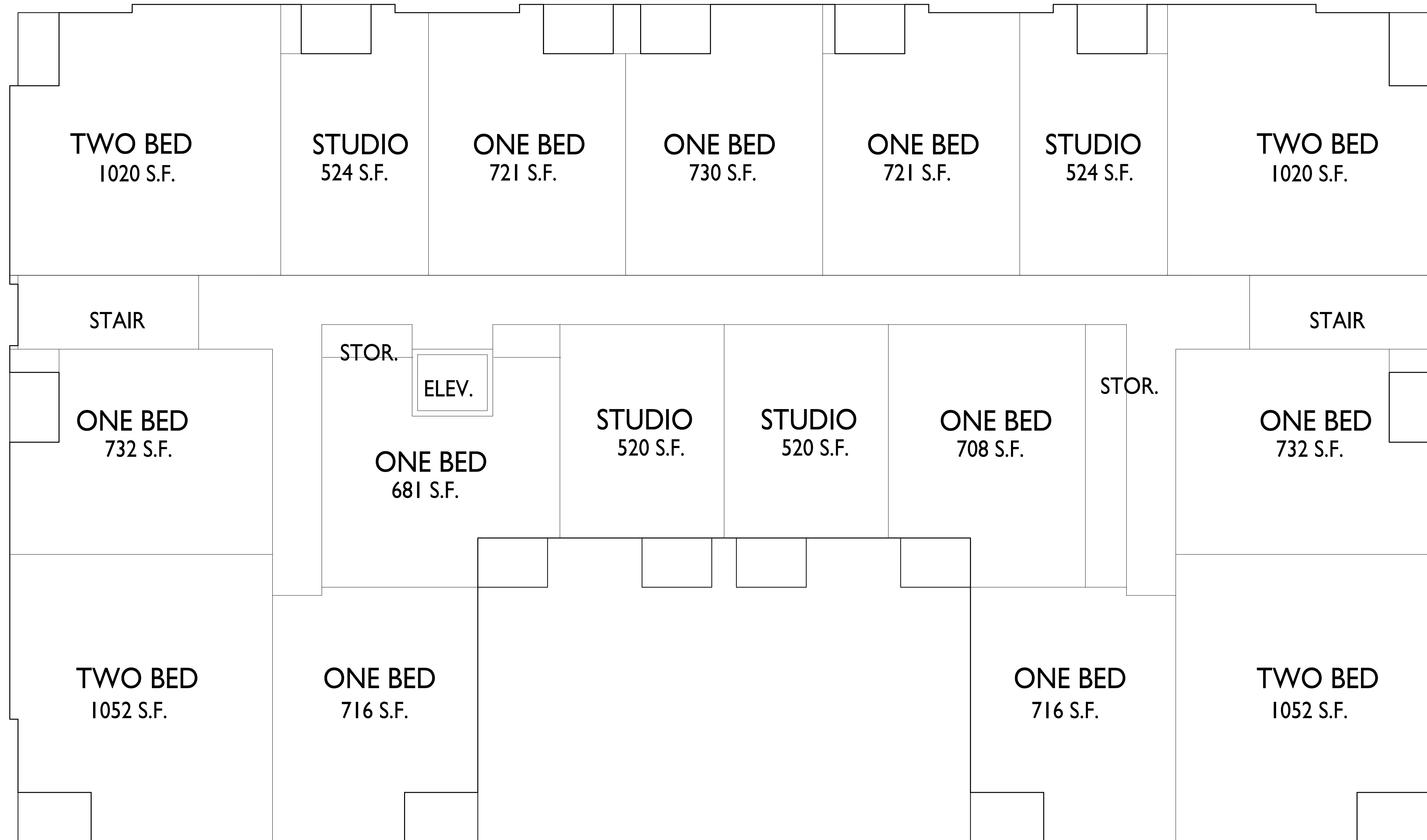
1 SECOND FLOOR PLAN
A-1.2 1/8" = 1'-0"





knothe • bruce
ARCHITECTS

Phone: 7601 University Ave., Ste 201
608.836.3690 Middleton, WI 53562

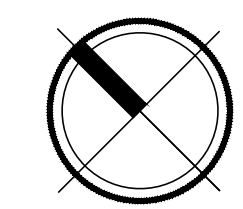


ISSUED
Issued for UDC Informational - August 19, 2020

PROJECT TITLE
**PARK STREET
DEVELOPMENT**

1224 S. Park Street
Madison, Wisconsin
SHEET TITLE
Third Floor Plan

1 THIRD FLOOR PLAN
A-1.3 1/8" = 1'-0"



SHEET NUMBER

A-1.3

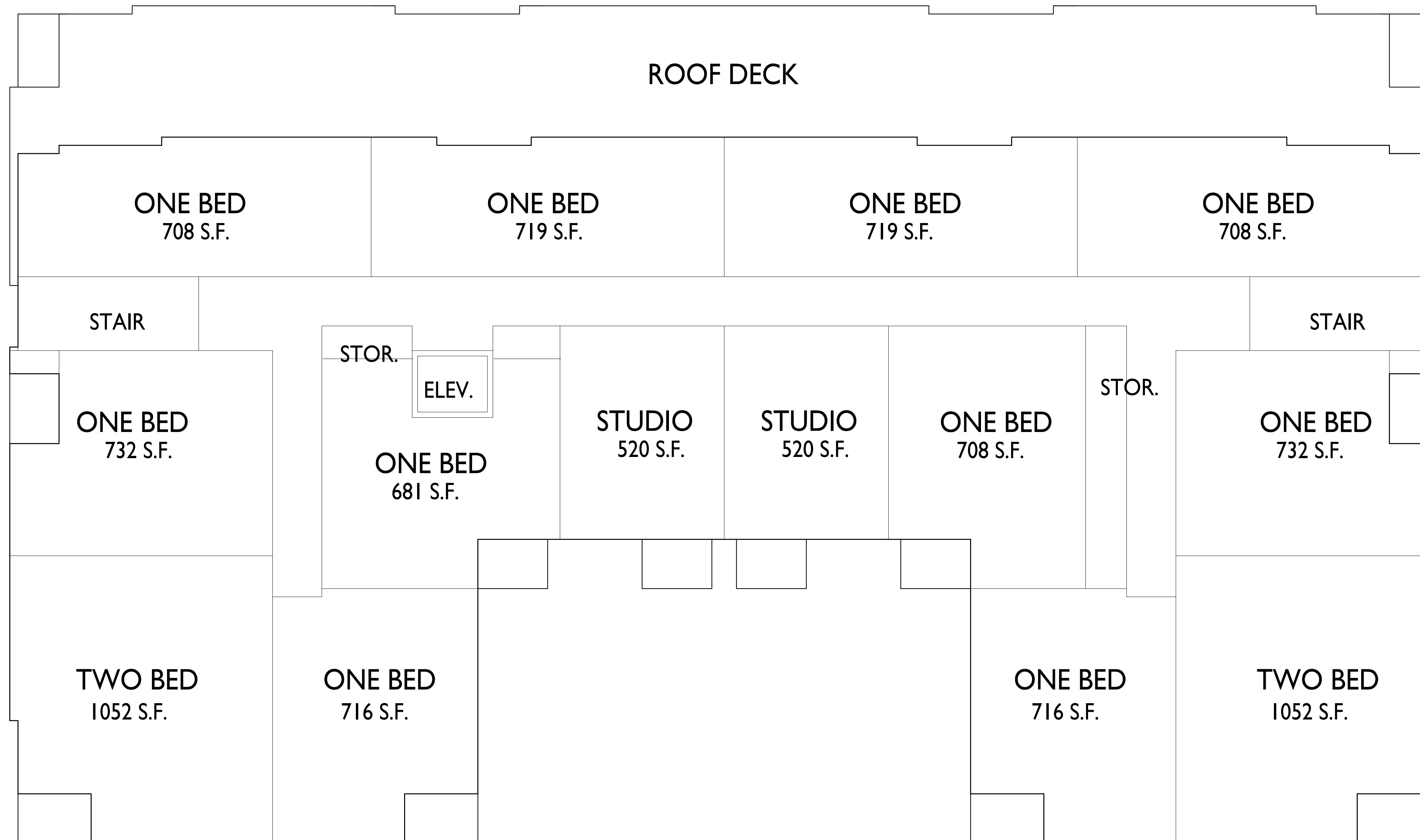
PROJECT NO. **2031**

© Knothe & Bruce Architects, LLC



knothe bruce
ARCHITECTS

Phone: 7601 University Ave., Ste 201
608.836.3690 Middleton, WI 53562

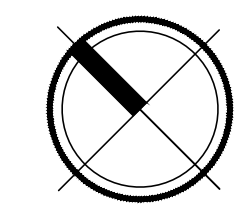


ISSUED
Issued for UDC Informational - August 19, 2020

PROJECT TITLE
PARK STREET
DEVELOPMENT

1224 S. Park Street
Madison, Wisconsin
SHEET TITLE
Fourth Floor Plan

1 FOURTH FLOOR PLAN
A-1.4 1/8" = 1'-0"



SHEET NUMBER

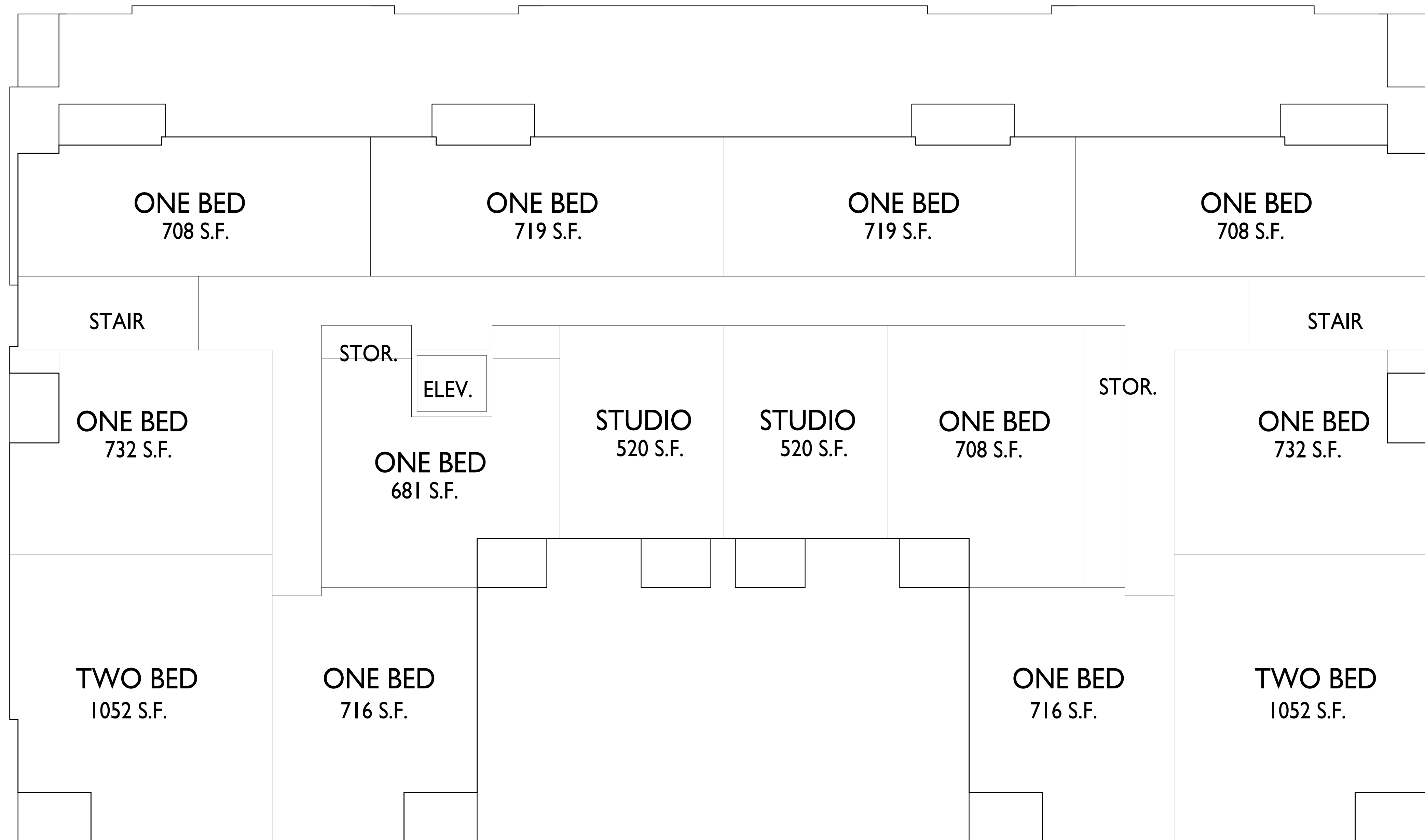
A-1.4

PROJECT NO. 2031
© Knothe & Bruce Architects, LLC



knothe bruce
ARCHITECTS

Phone: 7601 University Ave., Ste 201
608.836.3690 Middleton, WI 53562

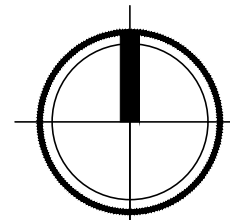


ISSUED
Issued for UDC Informational - August 19, 2020

PROJECT TITLE
PARK STREET
DEVELOPMENT

1224 S. Park Street
Madison, Wisconsin
SHEET TITLE
Fifth Floor

1 FIFTH FLOOR
A-1.5 1/8" = 1'-0"

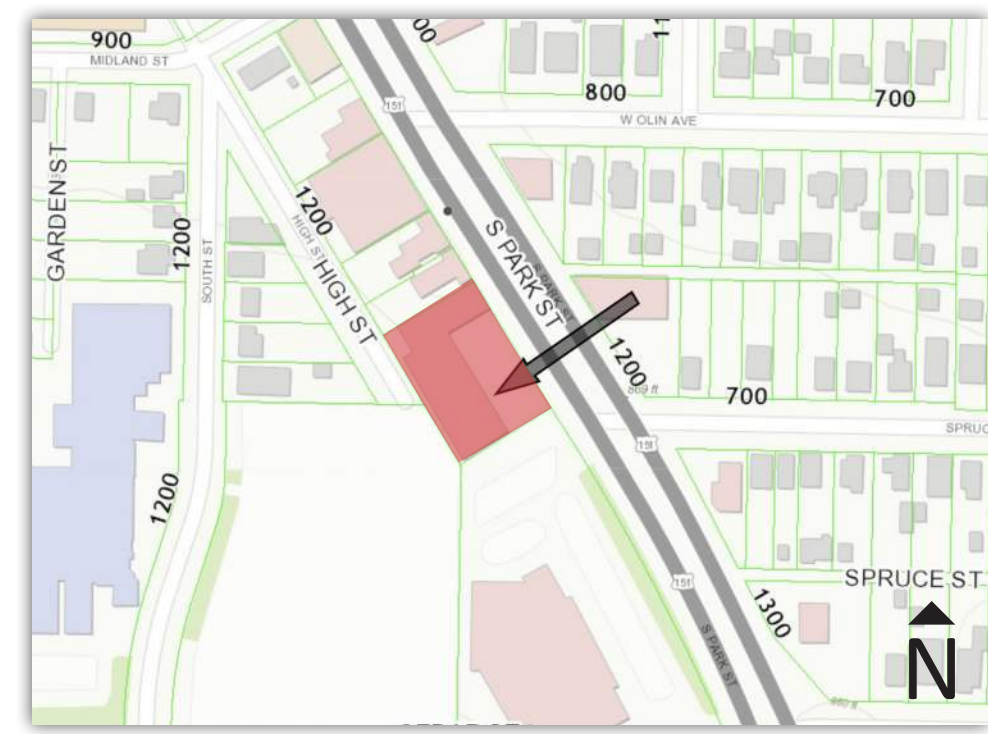


SHEET NUMBER

A-1.5

PROJECT NO. 2031

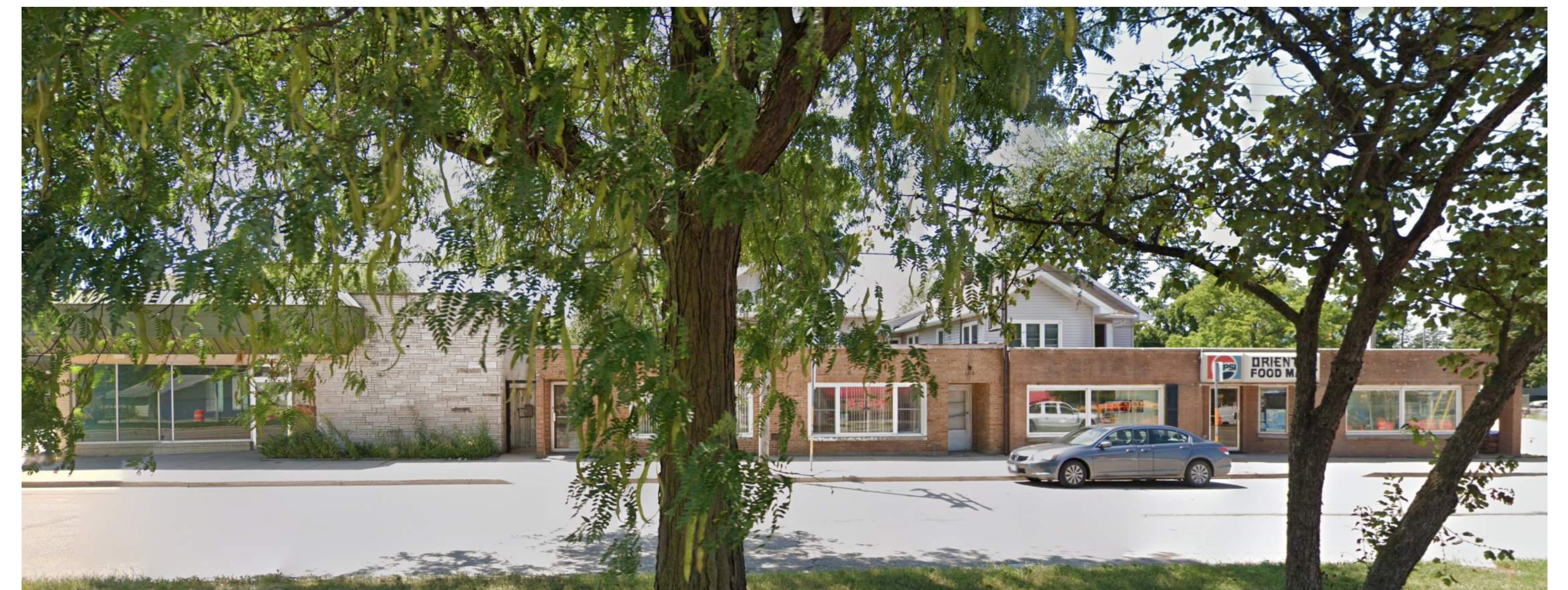
© Knothe & Bruce Architects, LLC



Project Site | 1224 S. Park St. | Wingra Creek Center



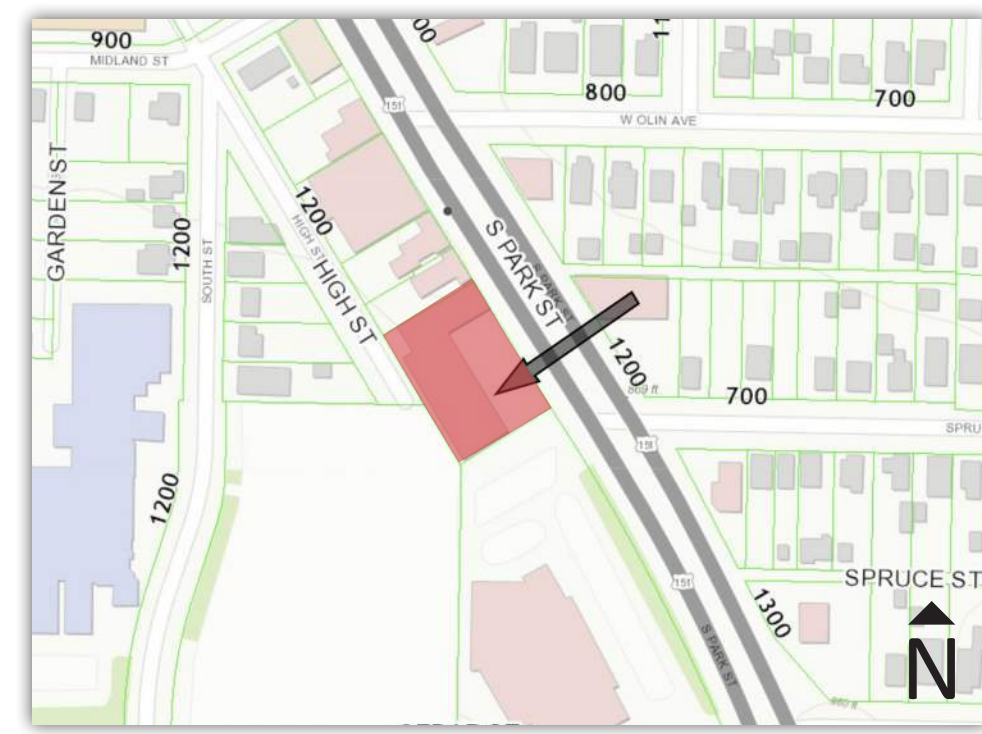
Southeast of Site | Pick'n Save



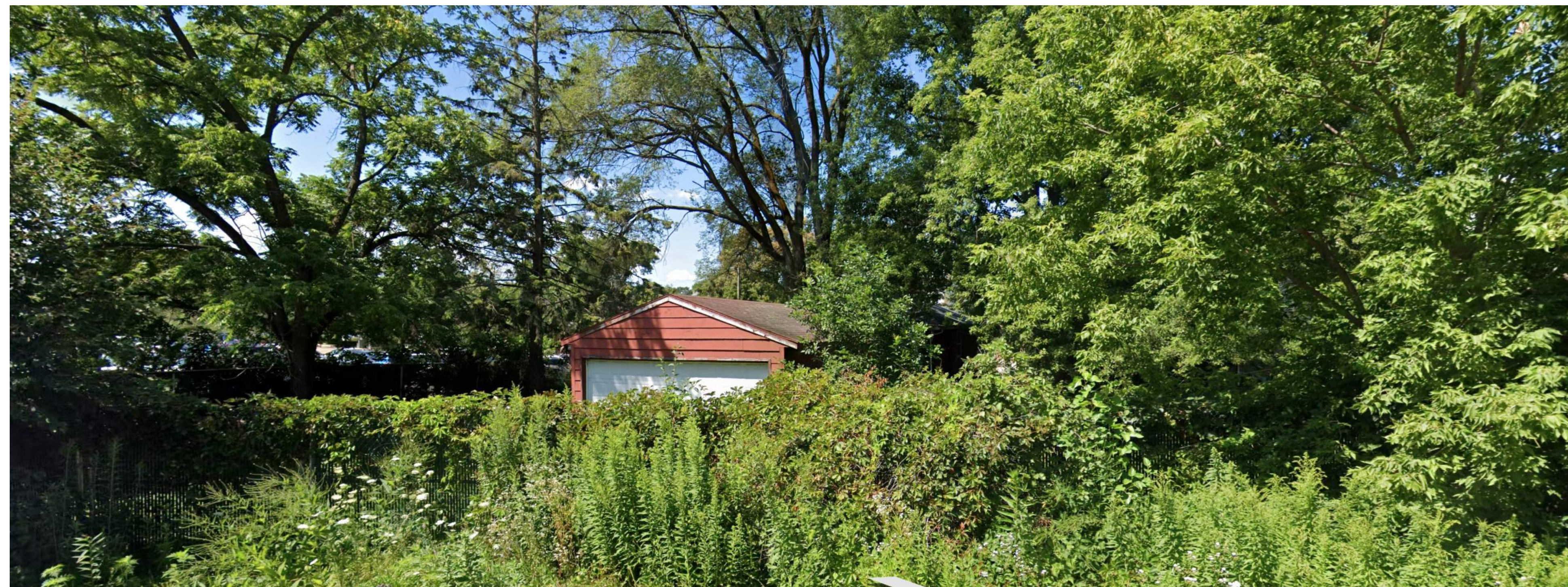
Northwest of Site | Oriental Food Mart



Northeast of Site across S. Park St. | Energy Services Inc.



Rear of Project Site along High St.



Southwest of Site across High St.