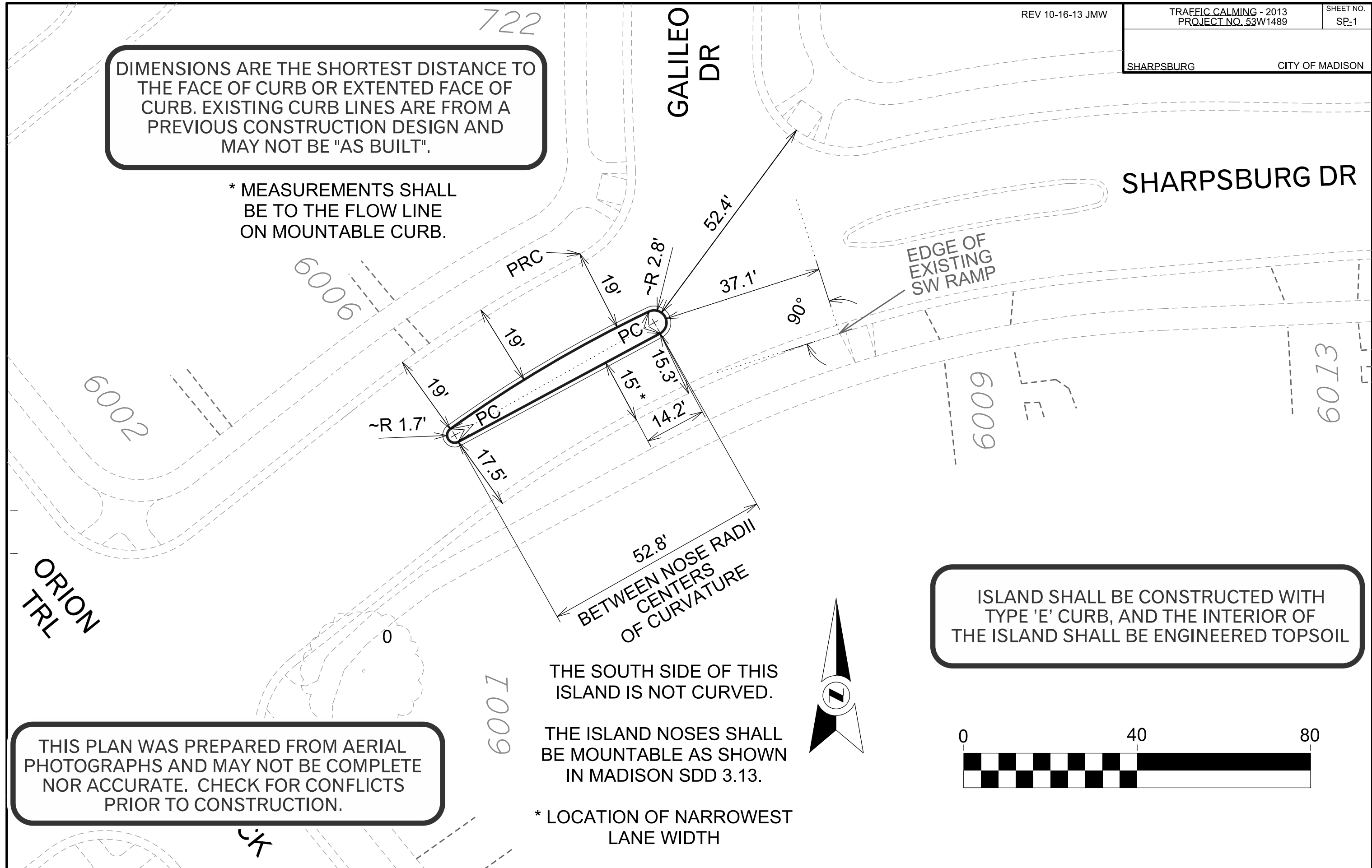


DIMENSIONS ARE THE SHORTEST DISTANCE TO THE FACE OF CURB OR EXTENDED FACE OF CURB. EXISTING CURB LINES ARE FROM A PREVIOUS CONSTRUCTION DESIGN AND MAY NOT BE "AS BUILT".

\* MEASUREMENTS SHALL BE TO THE FLOW LINE ON MOUNTABLE CURB.



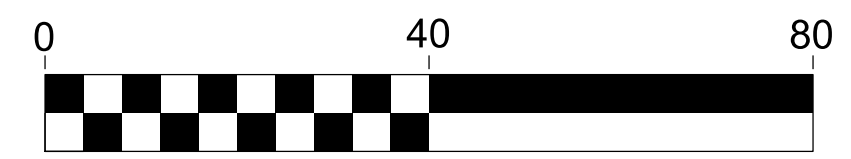
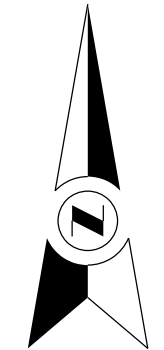
ISLAND SHALL BE CONSTRUCTED WITH TYPE 'E' CURB, AND THE INTERIOR OF THE ISLAND SHALL BE ENGINEERED TOPSOIL

THIS PLAN WAS PREPARED FROM AERIAL PHOTOGRAPHS AND MAY NOT BE COMPLETE NOR ACCURATE. CHECK FOR CONFLICTS PRIOR TO CONSTRUCTION.

THE SOUTH SIDE OF THIS ISLAND IS NOT CURVED.

THE ISLAND NOSES SHALL BE MOUNTABLE AS SHOWN IN MADISON SDD 3.13.

\* LOCATION OF NARROWEST LANE WIDTH



PLOT SCALE: \_\_\_\_\_  
PLOT NAME: \_\_\_\_\_  
REV. DATE: \_\_\_\_\_  
ORIGINATOR: CITY OF MADISON, TRAFFIC ENG. DIV.

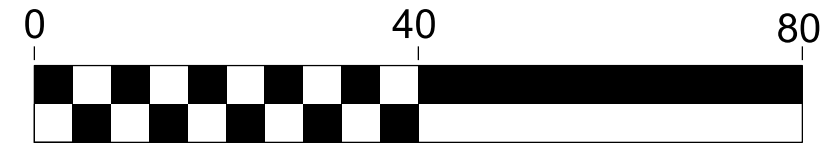
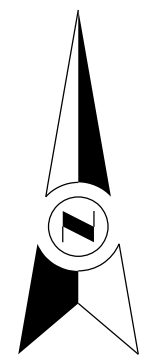
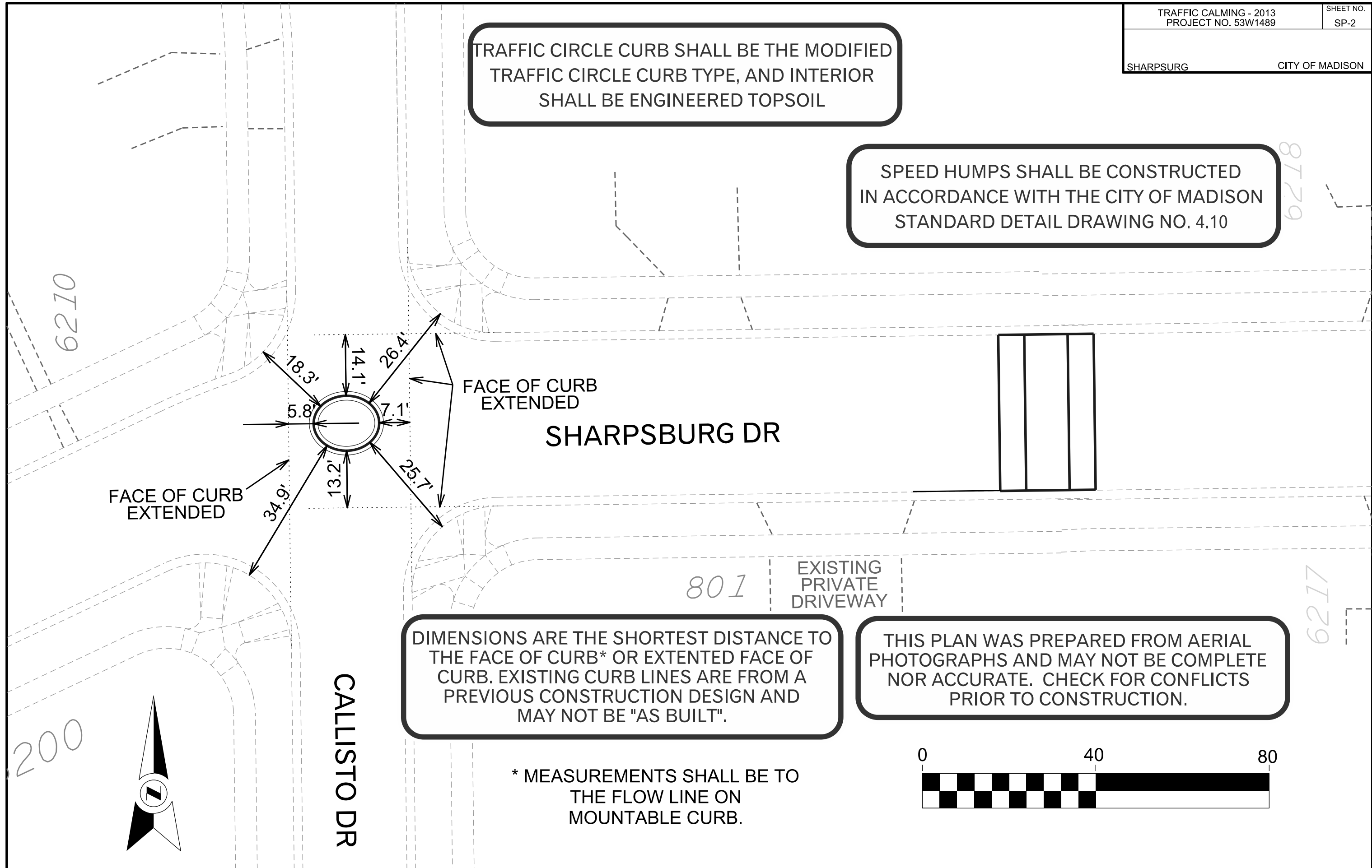
TRAFFIC CIRCLE CURB SHALL BE THE MODIFIED  
TRAFFIC CIRCLE CURB TYPE, AND INTERIOR  
SHALL BE ENGINEERED TOPSOIL

SPEED HUMPS SHALL BE CONSTRUCTED  
IN ACCORDANCE WITH THE CITY OF MADISON  
STANDARD DETAIL DRAWING NO. 4.10

DIMENSIONS ARE THE SHORTEST DISTANCE TO  
THE FACE OF CURB\* OR EXTENDED FACE OF  
CURB. EXISTING CURB LINES ARE FROM A  
PREVIOUS CONSTRUCTION DESIGN AND  
MAY NOT BE "AS BUILT".

THIS PLAN WAS PREPARED FROM AERIAL  
PHOTOGRAPHS AND MAY NOT BE COMPLETE  
NOR ACCURATE. CHECK FOR CONFLICTS  
PRIOR TO CONSTRUCTION.

\* MEASUREMENTS SHALL BE TO  
THE FLOW LINE ON  
MOUNTABLE CURB.



PLOT SCALE:  
PLOT NAME:  
REV. DATE:  
ORIGINATOR: CITY OF MADISON, TRAFFIC ENG. DIV.