



50 Lansing Street, Madison

645 square foot house sits back from the street. 35 feet from rear property line – in line with neighbors' garages. 65 feet from the sidewalk.



Attic shows 2 x 4s used in construction.

Chimney shown present in attic and where it has been removed below.



Outdated electrical panel with fuses.
City meter located inside the home.



Water lines running along
walls.



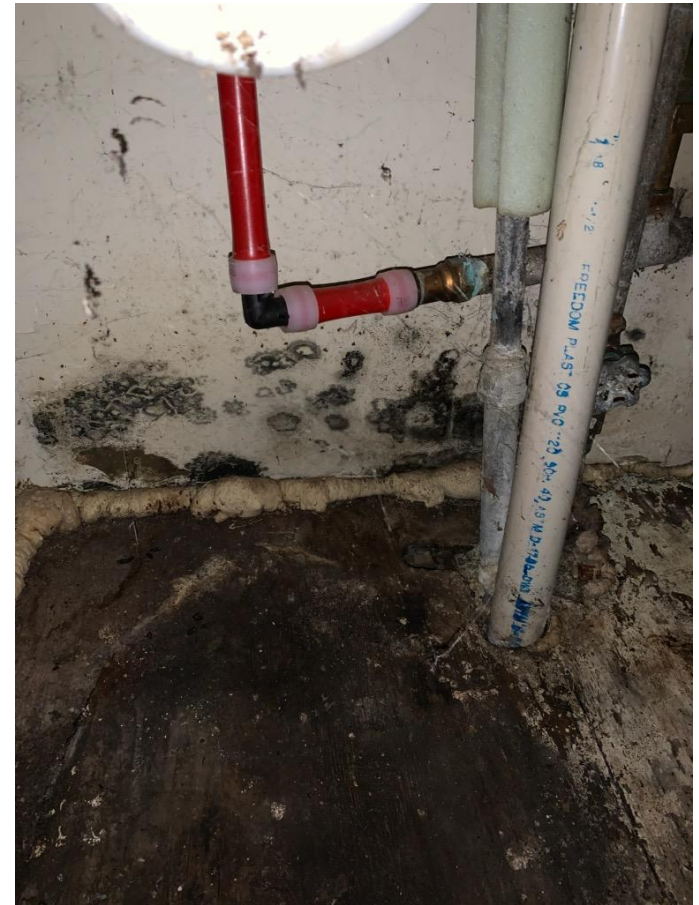
Wall unit only heating source.



Bathtub sunk into crawl space due to broken joists.



Crawl space shows mold and water damage.



Mold under kitchen sink.