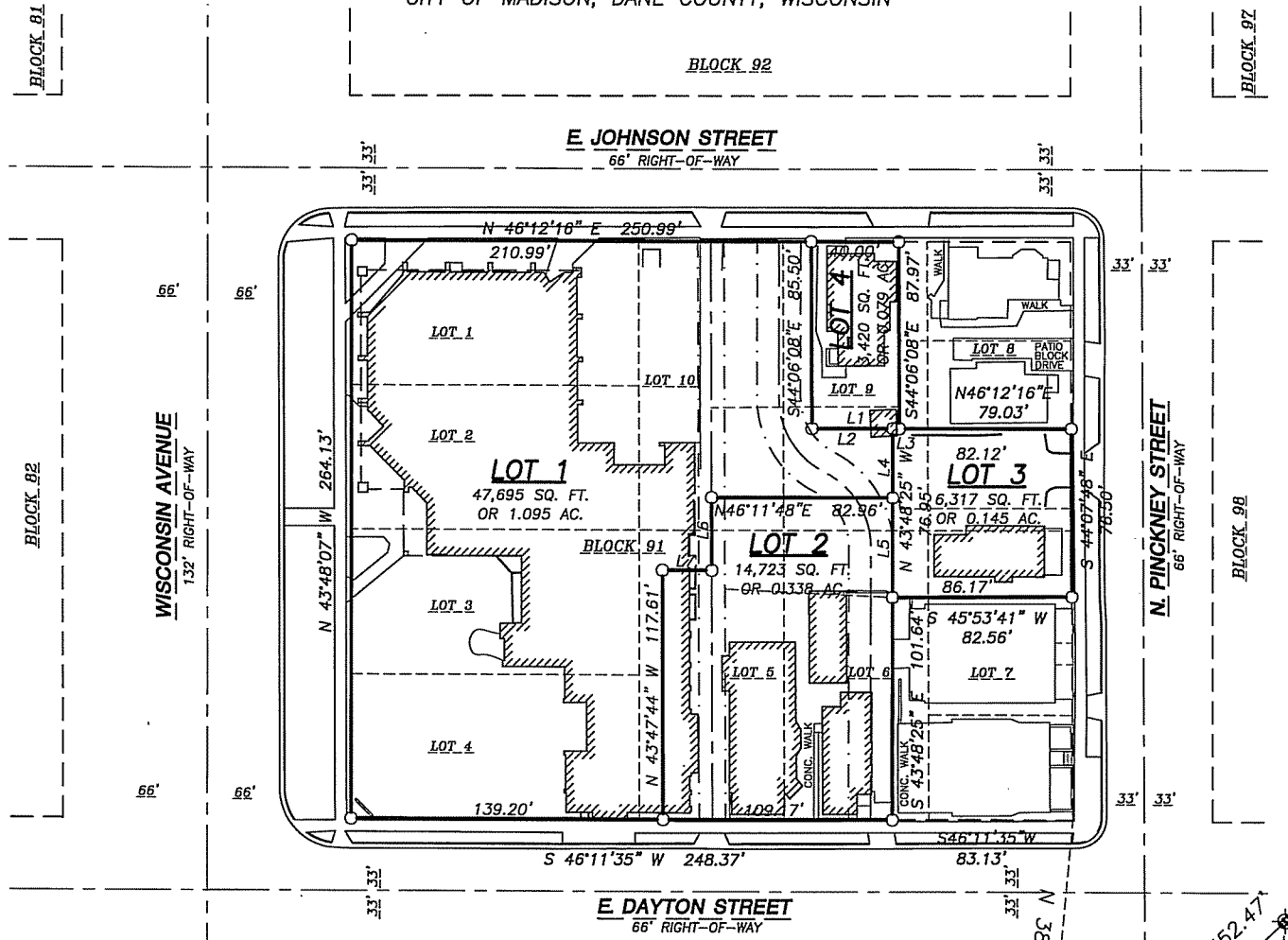


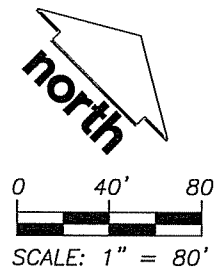
# CERTIFIED SURVEY MAP NO. \_\_\_\_\_

LOTS 1, 2, 3, 4, 5, AND 10, AND PART OF LOTS 6, 7, 8 AND 9, BLOCK 91, ORIGINAL PLAT OF MADISON, ALL BEING A PART OF GOVERNMENT LOT 1 OF SECTION 14, TOWN SEVEN NORTH (T. 7 N.), RANGE NINE EAST (R. 9 E.), CITY OF MADISON, DANE COUNTY, WISCONSIN



## LEGEND

- 3/4" X 24" REBAR SET
- ▲ RAILROAD SPIKE FOUND
- ⊙ SECTION CORNER MONUMENT,
- 3/4" REBAR FOUND OR AS NOTED
- ✕ CUT CROSS FOUND
- PROPERTY LINE
- - - EASEMENT LINE
- · - · - PLATTED LOT LINE
- · - · - RIGHT-OF-WAY LINE
- · - · - CENTERLINE
- · - · - SECTION LINE
- ▨ BUILDING
- +22.11' PROPERTY CORNER ELEVATION
- ( ) RECORDED INFORMATION



MEANDER CORNER FOR THE S.E. CORNER SECTION 14, T.7N., R.9E. CITY OF MADISON BRASS CAP IN MONUMENT BOX WCCS DANE ZONE 1991 N=483,337.98 E=821,176.82

MEANDER CORNER FOR THE E. 1/4 CORNER SECTION 14, T.7N., R.9E. CITY OF MADISON BRASS CAP IN MONUMENT BOX WCCS DANE ZONE 1991 N=484,890.11 E=821,208.77

LINE	BEARING	LENGTH
L1	N 46°12'16" E	40.00'
L2	N 46°12'16" E	36.91'
L3	N 46°12'16" E	3.08'
L4	S 43°48'25" E	31.56'
L5	S 43°48'25" E	45.39'
L6	S 43°59'55" E	33.21'
L7	S 46°12'16" W	22.50'

1241.dwg \06-2324 P-CSM2.dwg

PREPARED BY: <b>ISD</b>	PREPARED FOR: FIRST UNITED METHODIST	PROJECT NO: 06-2324	SURVEYED BY: JVK
----------------------------	---	------------------------	---------------------