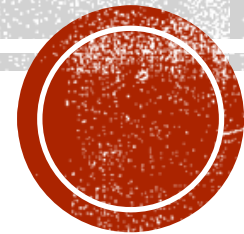


# KELBE BROTHERS ADDITION

Dave Phillips

Bayland Buildings



# SITE LOCATION

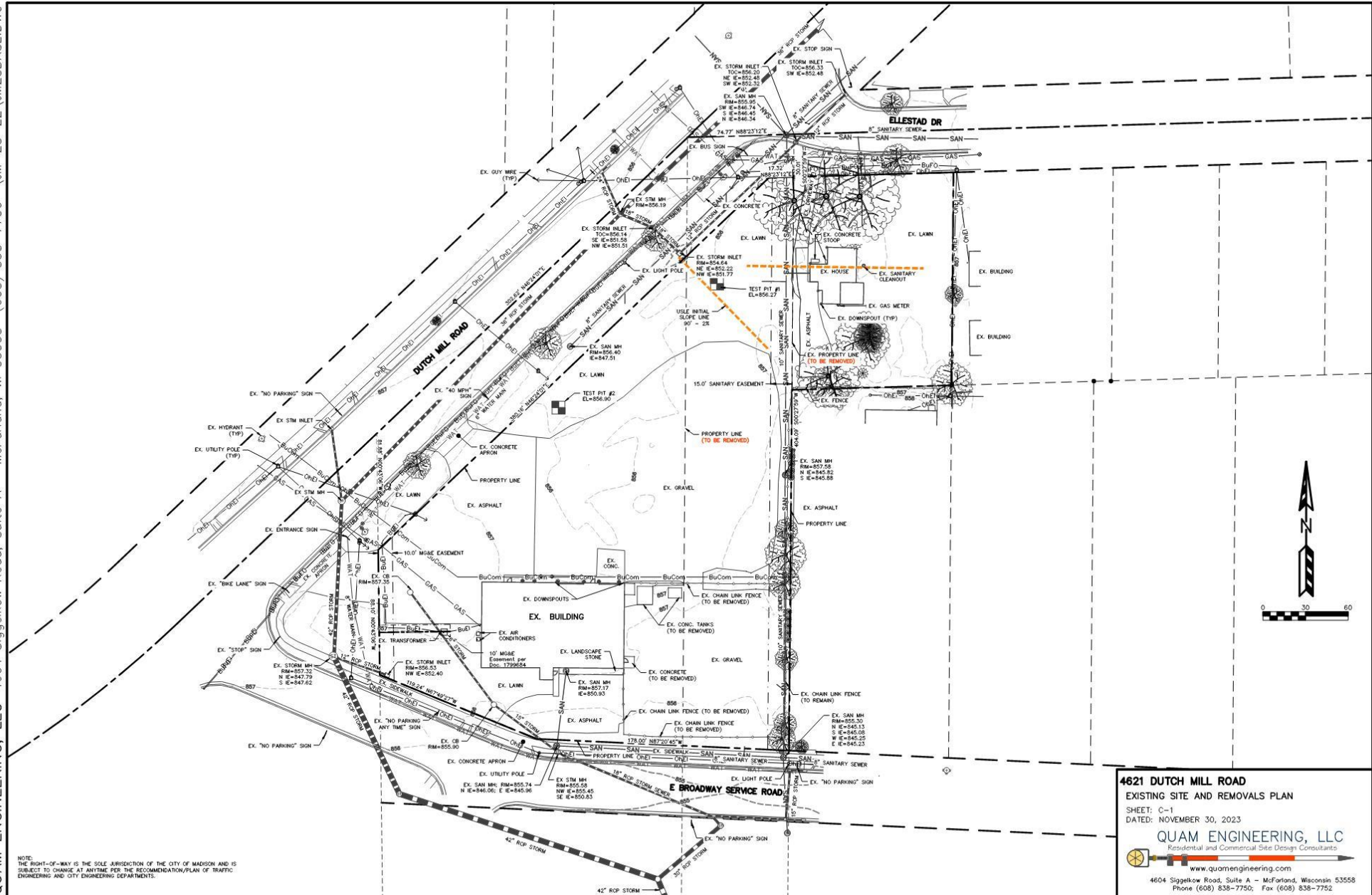




# CIVIL PLAN

## Existing site & Removals

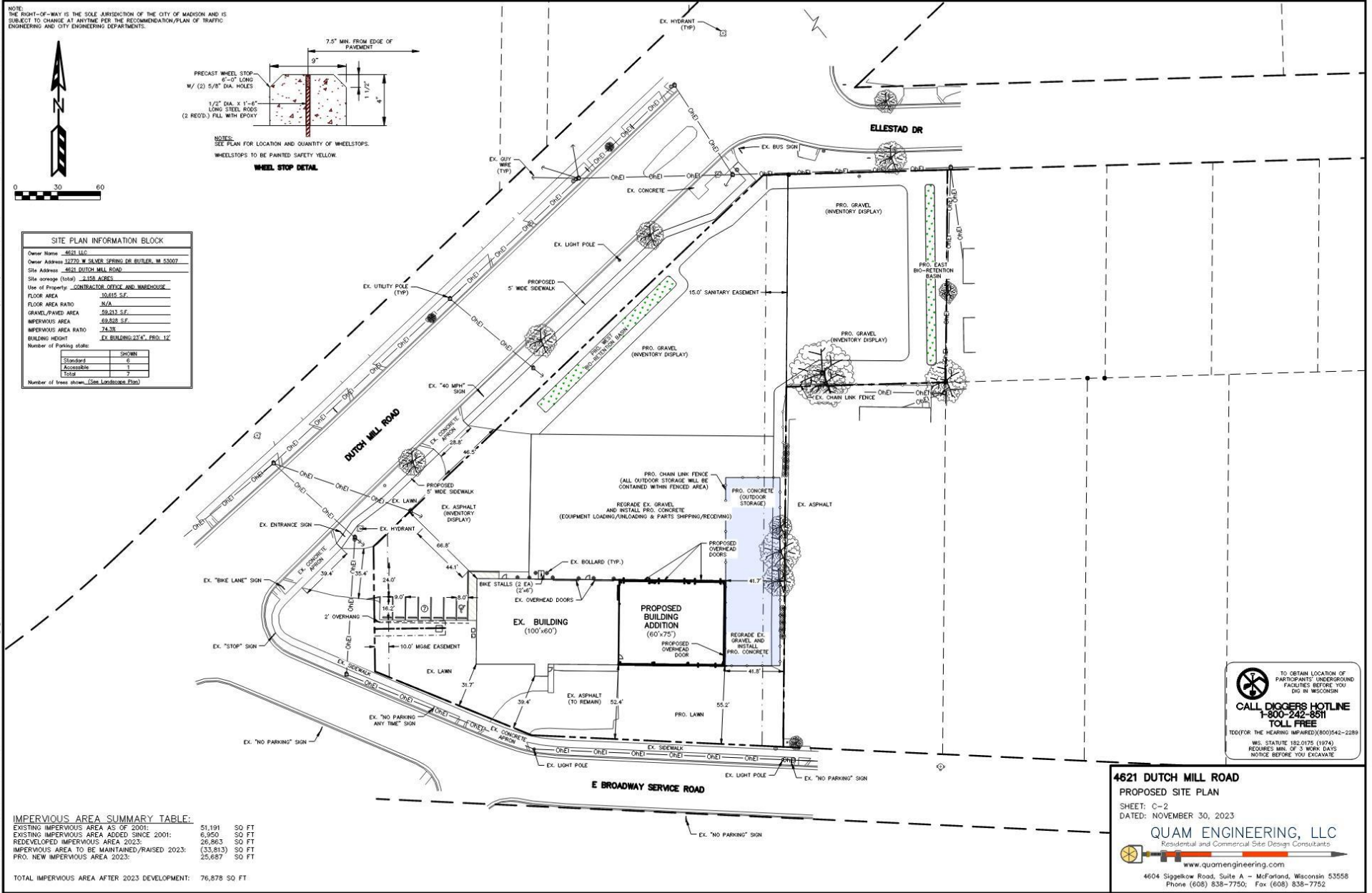
QUAM ENGINEERING, LLC 4604 Siggekow Road, Suite A - McFarland, WI 53558 (608) 838-7750 \JM-28-22\JM28BASE.DWG



# CIVIL PLAN

## Proposed Site

QUAM ENGINEERING, LLC 4604 Siggekow Road, Suite A - McFarland, WI 53558 (608) 838-7750 \JM-28-22\JM28BASE.DWG

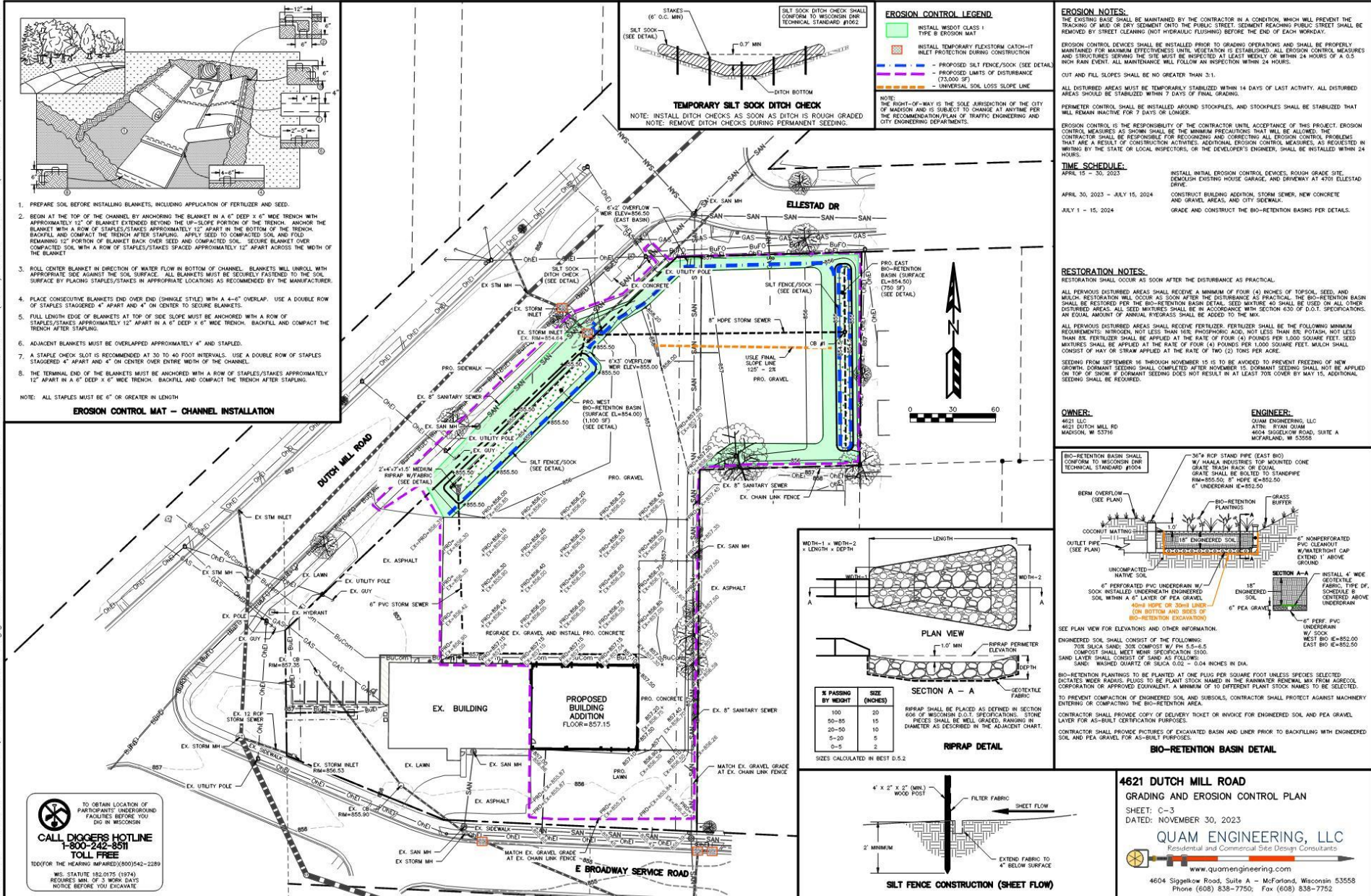




# CIVIL PLAN

## Grading & Erosion Control

QUAM ENGINEERING, LLC 4604 Siggekow Road, Suite A - McFarland, WI 53558 (608) 838-7750 \JM-28-22\JM28BASE.DWG





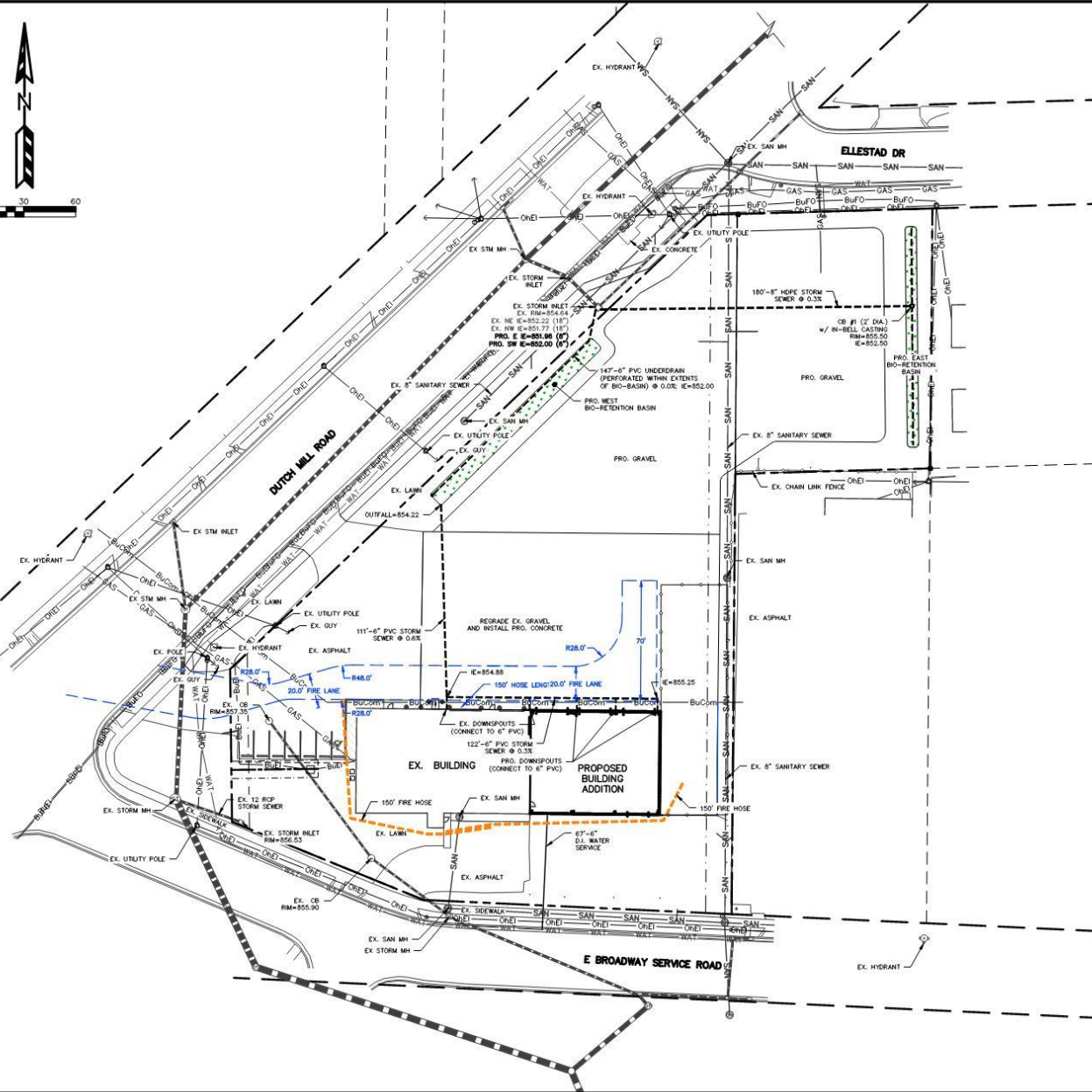
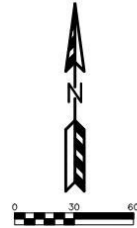
# CIVIL PLAN

## Utility & Fire Lane

QUAM ENGINEERING, LLC 4604 Siggekow Road, Suite A - McFarland, WI 53558 (608) 838-7750 \JM-28-22\JM28BASE.DWG

 TO OBTAIN LOCATION OF PARTICIPANTS' UNDERGROUND FACILITIES BEFORE YOU DIG IN WISCONSIN  
**CALL DIGGERS HOTLINE**  
**1-800-242-8511**  
**TOLL FREE**  
TOD FOR THE HEARING IMPAIRED (800)542-2289  
WIS. STATUTE 182.0175 (1974)  
REQUIRED MIN. OF 3 WORK DAYS  
NOTICE BEFORE YOU EXCAVATE

THE RIGHT-OF-WAY IS THE SOLE JURISDICTION OF THE CITY OF MADISON AND IS SUBJECT TO CHANGE AT ANY TIME PER THE RECOMMENDATION/PLAN OF TRAFFIC ENGINEERING AND CITY ENGINEERING DEPARTMENTS.



**UTILITY NOTES:**

THE CONTRACTOR SHALL FIELD VERIFY ALL EXISTING UTILITY LOCATIONS, SIZES, MATERIALS, AND ELEVATIONS PRIOR TO CONSTRUCTION. ANY DISCREPANCIES SHALL BE REPORTED TO ENGINEER.

PLUMBER SHALL VERIFY SANITARY LATERAL AND WATER SERVICE SIZE TO PROPOSED BUILDINGS.

ALL WORK IN THE PUBLIC RIGHT-OF-WAY SHALL BE PERFORMED BY A PRE-APPROVED CONTRACTOR AUTHORIZED TO WORK IN THE RIGHT-OF-WAY.

PRIOR TO BEGINNING SEWER CONSTRUCTION, THE CONTRACTOR SHALL OBTAIN A CITY PERMIT TO EXCAVATE IN THE PUBLIC RIGHT-OF-WAY AND TO CONNECT TO CITY SEWERS. THE CONTRACTOR SHALL PAY THE PERMIT FEE, INSPECTION FEE, AND STREET DEGRADATION FEE AND SHALL COMPLY WITH ALL CONDITIONS OF THE PERMIT.

THE CONTRACTOR SHALL SUBMIT A WATER SERVICE APPLICATION FORM AND FEES BEFORE CONNECTING TO THE EXISTING WATER SYSTEM. PROVIDE AT LEAST 48-HOUR NOTICE BETWEEN APPLICATION SUBMITTAL AND THE REQUESTED INSTALLATION OR INSPECTION APPOINTMENT. APPLICATION MATERIALS ARE AVAILABLE ON THE WATER UTILITY'S PLUMBERS & CONTRACTORS WEBSITE, OTHERWISE THEY MAY BE OBTAINED FROM THE WATER UTILITY MAIN OFFICE AT 119 E OUN AVENUE.

THE LENGTHS OF ALL UTILITIES ARE TO CENTER OF STRUCTURES OR FITTINGS AND MAY VARY SLIGHTLY FROM THE PLAN. LENGTHS SHALL BE VERIFIED IN THE FIELD DURING CONSTRUCTION.

ALL STORM SEWER SHALL BE HOPE SMOOTH WALL INTERIOR CORRUGATED PIPE AS MANUFACTURED BY ADS OR APPROVED EQUAL. PIPE SHALL HAVE WATERTIGHT JOINTS AND SHALL MEET THE REQUIREMENTS OF AASHTO M-294, TYPE S.

CATCH BASINS AND INLETS SHALL BE CONCRETE AND CONSTRUCTED IN ACCORDANCE WITH THE CITY OF MADISON STANDARD SPECIFICATIONS OR APPROVED EQUAL.


ALL UNDERGROUND EXTERIOR NON-METALLIC SEWERS AND WATER SERVICES MUST BE PROVIDED WITH TRACER WIRE OR OTHER METHODS IN ORDER TO BE LOCATED IN ACCORDANCE WITH 182.0715(2v) OF STATE STATUTES.

THE CONTRACTOR SHALL INSTALL TREE PROTECTION FENCING IN THE AREA BETWEEN THE CURB AND SIDEWALK AND EXTEND IT AT LEAST 5 FEET FROM BOTH SIDES OF THE TREE ALONG THE LENGTH OF THE TERRACE. NO EXCAVATION IS PERMITTED WITHIN 5 FEET OF THE OUTSIDE EDGE OF A TREE TRUNK. IF EXCAVATION WITHIN 5 FEET OF ANY TREE IS NECESSARY, CONTRACTOR SHALL CONTACT CITY FORESTRY (266-4516) PRIOR TO EXCAVATION TO ASSESS THE IMPACT TO THE TREE AND ROOT SYSTEM. TREE PRUNING SHALL BE COORDINATED WITH CITY FORESTRY. TREE PROTECTION SPECIFICATIONS CAN BE FOUND IN SECTION 107.13 OF CITY OF MADISON STANDARD SPECIFICATIONS FOR PUBLIC WORKS CONSTRUCTION. ANY TREE REMOVALS THAT ARE REQUIRED FOR CONSTRUCTION AFTER THE DEVELOPMENT PLAN IS APPROVED WILL REQUIRE AT LEAST A 72-HOUR WAITING PERIOD BEFORE A TREE REMOVAL PERMIT CAN BE ISSUED BY FORESTRY, TO NOTIFY THE ALDER OF THE CHANGE IN THE TREE PLAN.

ANY UTILITIES WHICH ARE DAMAGED BY THE CONTRACTOR SHALL BE REPAIRED TO THE OWNER'S SATISFACTION AT THE CONTRACTOR'S EXPENSE.

THE CONTRACTOR SHALL REPLACE ALL SIDEWALK, SIDEWALK AND CURB AND GUTTER THAT ABUTS THE PROPERTY THAT IS DAMAGED BY CONSTRUCTION, OR ANY SIDEWALK, SIDEWALK AND CURB AND GUTTER, WHICH THE CITY ENGINEER DETERMINES NEEDS TO BE REPLACED BECAUSE IT IS NOT AT A DESIRABLE GRADE, REGARDLESS OF WHETHER THE CONDITION EXISTED PRIOR TO BEGINNING CONSTRUCTION. THE CONTRACTOR SHALL RESTORE ANY PAVEMENT ON DUTCH MILL ROAD AND EAST BROADWAY SERVICE ROAD ADJACENT TO THE DEVELOPMENT THAT IS DAMAGED BY CONSTRUCTION IN ACCORDANCE WITH THE CITY OF MADISON'S PAVEMENT PATCHING CRITERIA.

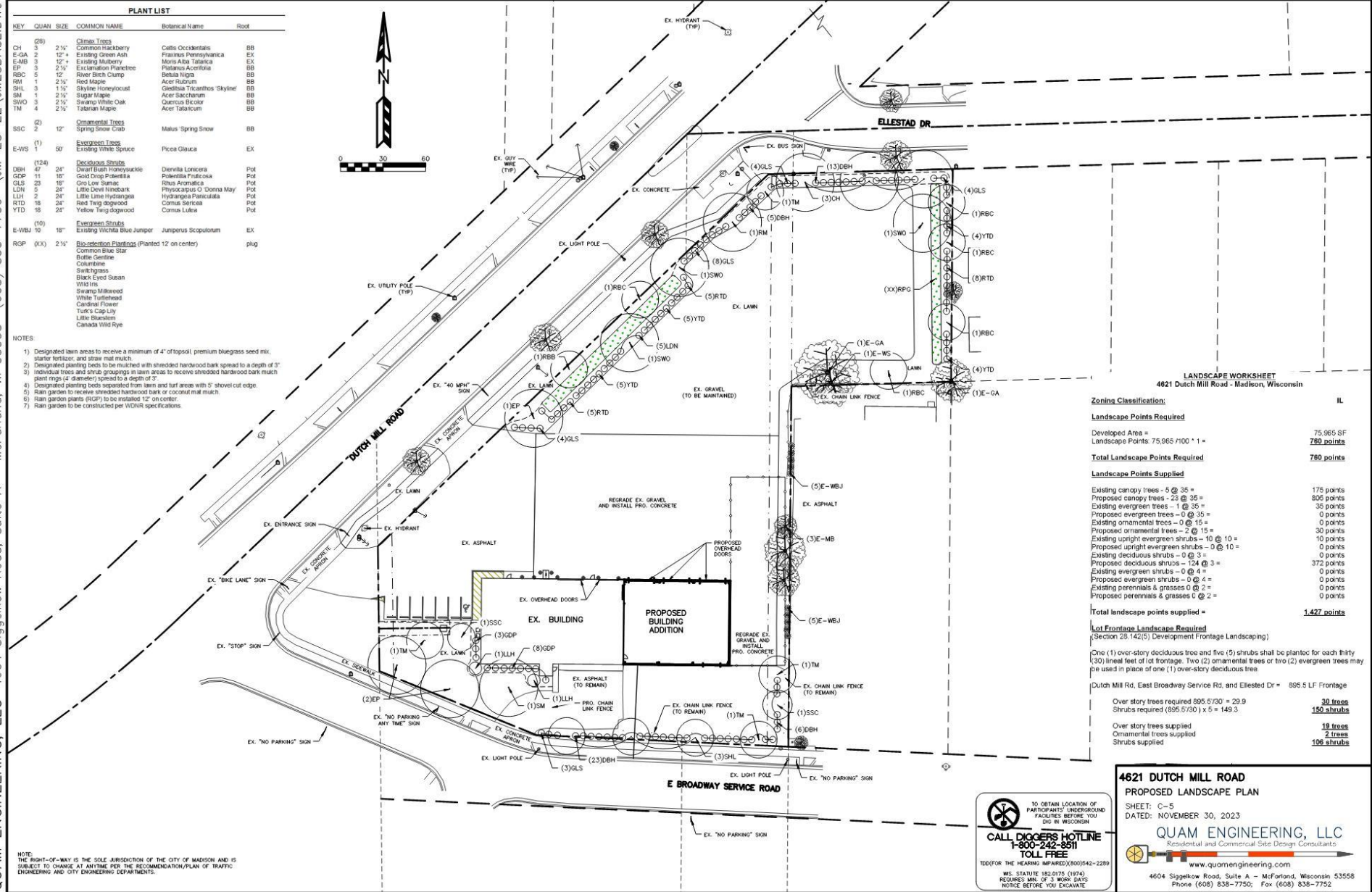
**4621 DUTCH MILL ROAD**  
**UTILITY & FIRE LANE PLAN**  
SHEET: C-4  
DATED: NOVEMBER 30, 2023

**QUAM ENGINEERING, LLC**  
*Residential and Commercial Site Design Consultants*  
 [www.quamengineering.com](http://www.quamengineering.com)  
4604 Siggekow Road, Suite A - McFarland, Wisconsin 53558  
Phone (608) 838-7750; Fax (608) 838-7752

# CIVIL PLAN

## Proposed landscape

QUAM ENGINEERING, LLC 4604 Siggekow Road, Suite A - McFarland, WI 53558 (608) 838-7750 \JM-28-22\JM28BASE.DWG







# PHOTOMETRIC PRODUCT DESCRIPTION

## Noctura Series LED Area Luminaires

### Product Description

The Noctura® LED Area luminaire minimizes cost of ownership with easy installation, high performance and quality backed by a Cree Lighting 5-year limited warranty. The Noctura Series has a coordinated style across area, flood and wall mount luminaires to provide a consistent daytime appearance across a building site or campus. Versatile mounting configurations offer installation flexibility and ease of application for direct pole, terson or vertical flat surface mounting.

Applications: Ideal for retrofit and new installation: parking area, security, or site pathway applications.

### Performance Summary

**Lumen Output:** Up to 35,400 lumens

**Efficacy:** Up to 155 LPW

**CRI:** Minimum 70 CRI

**CCT:** 4000K, 5000K

**Limited Warranty\*:** 5 years on luminaire, mounts, backlight shields, bird spikes, occupancy sensor and cables/1 year on remaining field-installed accessories

\*See <http://www.creelighting.com/warranty> for warranty terms

### Accessories

Field-Installed	Button Photocell	Pole Mounted Occupancy Sensor
Backlight Shield NTA-BLSF-11L - For use with 11L only NTA-BLSF-19L - For use with 19L only NTA-BLSF-35L - For use with 35L only Bird Spikes NTA-BROSPK-19L - For use with 19L only NTA-BROSPK-35L - For use with 35L only	JL-423CZ Cable NTX-GC-5 (120-277 Volt only) NTX-GC-5-U (120-480 Volt) - 5' (1.5m) cable replacement Shunting Cap XA-XLSHRT	NTX-FSP21B-S-LP-W - Requires XA-SENSREM Hand-Held Remote XA-SENSREM - For successful implementation of the Pole Mounted Occupancy sensor, a minimum of one hand-held remote is required

### Ordering Information

Fully assembled luminaire is composed of two components that must be ordered separately:

Example: Mount: NTA-DA-BZ-U + Luminaire: NTA-A-NM-T3-11L-40K-UL-BZ

### Mount (Luminaires must be ordered separately)\*\*

Direct Arm Mounts	Adjustable Arm Mounts	Trunnion Mounts
NTA-DA-BZ-U (120-480 Volt) - Direct Arm Mount NTX-TR-BZ-U (120-480 Volt) - Extended Arm includes a NEMA® 7-pin Photocell Receptacle Must be used with NTA-DA-BZ-U mount NTX-TR-BZ (120-277 Volt) - Extended Arm includes a NEMA® 3-pin Photocell Receptacle Must be used with NTA-DA-BZ-U mount	NTX-AA-BZ-U (120-480 Volt) - Adjustable Arm Mount w/ Knockout for Field-Installed Button Photocell (by others) NTX-AA-BZ-U (120-480 Volt) - Adjustable Arm Mount w/NEMA® 7-pin Photocell Receptacle 7-pin Photocell Receptacle	NTX-TR-BZ-U (120-480 Volt) - Trunnion Mount NTX-TR-BZ-U (120-480 Volt) - Trunnion Mount w/NEMA® 7-pin Photocell Receptacle NTX-TR-PW-BZ-U (120-480 Volt) - Trunnion Mount w/Knockout for Field-Installed Button Photocell (by others)

NEMA® 3-pin and 7-pin Photocell Receptacles require photocell or shunting cap by others

\*\*Reference EPA and pole configuration availability table beginning on page 9

Luminaire (Mount must be ordered separately)**						
Product	Version	Housing	Optic*	Lumen Package**	CCT	Color Options
Available 11L Product Combinations						
NTA	A	NM	T3 - Type III	11L	40K	UL - 120-277V BZ
NTA	A	NM	T4 - Type IV	11L	40K	UL - 120-277V BZ
Available 19L Product Combinations						
NTA	A	NM	T3 - Type III	19L	40K	UL - 120-277V BZ
NTA	A	NM	T4 - Type IV	19L	40K	UL - 120-277V BZ
NTA	A	NM	T5 - Type V	19L	40K	UL - 120-277V BZ
NTA	A	NM	T5 - Type V	19L	50K	UL - 120-277V BZ
Available 35L Product Combinations						
NTA	A	NM	T3 - Type III	35L	40K	UL - 120-277V BZ
NTA	A	NM	T3 - Type III	35L	50K	UL - 120-277V BZ
NTA	A	NM	T4 - Type IV	35L	40K	UL - 120-277V BZ
NTA	A	NM	T4 - Type IV	35L	50K	UL - 120-277V BZ
NTA	A	NM	T5 - Type V	35L	40K	UL - 120-277V BZ
NTA	A	NM	T5 - Type V	35L	50K	UL - 120-277V BZ

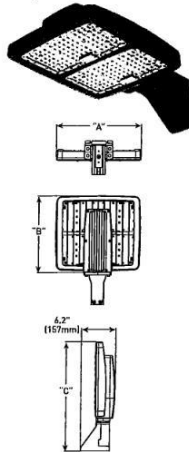
\* Available with Backlight Shield when ordered with field-installed accessory (see table above)

\*\* Lumen Package codes identify approximate light output only. Actual lumen output levels may vary depending on CCT and optic selections. Refer to Initial Delivered Lumen tables for specific lumen values

\*\*\* Note: Limited product availability. Consult factory for availability.

Rev. Date: V14 08/26/2023

### 11L Direct Mount (NTA-DA-BZ-U)



Lumen Package	Weight**	Dim "A"	Dim "B"	Dim "C"
11L*	12.5 lbs. (5.7kg)	10.6" (269mm)	12.9" (328mm)	18.7" (476mm)
19L*	16.0 lbs. (7.2kg)	15.4" (391mm)	13.8" (351mm)	19.6" (498mm)
35L*	21.3 lbs. (9.6kg)	15.4" (391mm)	19.8" (502mm)	25.6" (650mm)

\* See pages 3-5 for additional line drawings

\*\* Includes housing & mount (for housing weight only refer to page 2)

Note: Refer to page 18 for fixture mounting detail patterns.

### Noctura® LED Area Luminaire

### Product Specifications

#### CONSTRUCTION & MATERIALS

- Slim, low profile design minimizes wind load requirements
- Luminaire housing is rugged die cast aluminum with weatherlight integral LED driver compartment which is specifically designed for advanced LED thermal management
- Housing and mounting accessories finished in bronze polyester powder coat paint, 2.5 mil nominal thickness
- Mounting options include: adjustable arm w/knockout provision for field-installed button type photocell (by others), adjustable arm w/NEMA® 7-pin photocell receptacle, trunnion mount, trunnion mount w/NEMA® 7-pin photocell receptacle, trunnion mount w/knockout provision for field-installed button type photocell (by others), and direct arm mount
- Extension arm accessory for direct arm mount with a NEMA® 3-pin or 7-pin photocell receptacle
- Photocell or shunting cap by others
- Adjustable arm mount is constructed of rugged die cast aluminum and mounts to 2" (51mm) 1/2-20 3/32" (4.0mm) O.D. stems. It includes tooth lock aiming that can be adjusted from 0° (horizontal) to 45° in 5° increments
- Trunnion mount features rugged steel construction, mounts to vertical flat surfaces, and can be adjusted from 0° (horizontal) to 45° in 15° increments
- Direct arm is constructed of rugged die cast aluminum and mounts to 3-4" (76-152mm) square poles or 4-5" (102-127mm) round poles with (2) 5/16" bolts
- Mount secures to luminaire housing with (4) 5/16" bolts and lock washers (included)
- Designed for downward applications only, 45-degree tilt maximum
- Housing Weight: 11L-8.6 lbs. (3.9kg); 19L-12.1 lbs. (5.5kg); 35L-17.2 lbs. (7.8kg)

#### OPTICS

- Mid-power LED array Area optics are available in IES Type II, IV and V distributions for 4000K and 5000K CCTs with a minimum of 70 CRI. Efficacies up to 155 LPW for minimal energy consumption. Backlight shields are available for light trespass and glare control.

#### ELECTRICAL SYSTEM

- Input Voltage: 120-277V, 50/60Hz, Class 1 drivers
- Power Factor: > 0.9 at full load
- Total Harmonic Distortion: < 20% at full load
- Integral 10kV/5kA surge suppression protection standard
- When code dictates fusing, a slow blow fuse or type C/D breaker should be used to address inrush current
- Quick connect supply cord makes installation easy
- Designed with 0-10V dimming capabilities. Controls by others
- 10V Source Current: 0.20 mA
- Operating Temperature Range: -30°C - +40°C (-22°F - +104°F)

#### REGULATORY & VOLUNTARY QUALIFICATIONS

- cULus Listed (UL1598)
- Suitable for wet locations
- Meets NEMA C82.77 standards
- Drivers and LEDs are UL Recognized in accordance with UL8750
- Enclosure meets IP66 requirements per IEC 60529
- Direct and adjustable arms are certified to ANSI C136.31-2018, 36 vibration standards. Trunnion mounts are certified to ANSI C136.31-2001, 1.56 vibration standards
- ANSI C136.2 10kV/5kA surge protection, tested in accordance with IEEE/ANSI C62.41.2
- Meets FCC Part 15, Subpart B, Class A limits for conducted and radiated emissions

- RoHS compliant. Consult factory for additional details
- CA RESIDENTS WARNING: Cancer and Reproductive Harm - [www.cdph.ca.gov](http://www.cdph.ca.gov)

### Electrical Data\*

Lumen Package	System Watts 120-277V	Total Current [A]			
		120V	208V	240V	277V
11L	75	0.75	0.40	0.35	0.30
19L	130	1.30	0.75	0.65	0.56
35L	230	2.30	1.33	1.15	1.00

\* Electrical data at 25°C (77°F). Actual wattage may differ by +/- 10% when operating between 120-277V +/- 10%

### Noctura Series Ambient Adjusted Lumen Maintenance†

Ambient	Initial LMF	25K hr Reported <sup>2</sup> LMF	50K hr Reported <sup>2</sup> LMF	75K hr Estimated <sup>3</sup> LMF	100K hr Estimated <sup>3</sup> LMF
5°C (41°F)	1.04	0.98	0.92	0.87	0.82
10°C (50°F)	1.03	0.97	0.91	0.86	0.81
15°C (59°F)	1.02	0.96	0.91	0.85	0.80
20°C (68°F)	1.01	0.95	0.90	0.84	0.79
25°C (77°F)	1.00	0.94	0.89	0.83	0.79
30°C (86°F)	0.99	0.93	0.88	0.83	0.78
35°C (95°F)	0.98	0.93	0.87	0.82	0.77
40°C (104°F)	0.97	0.92	0.86	0.81	0.76

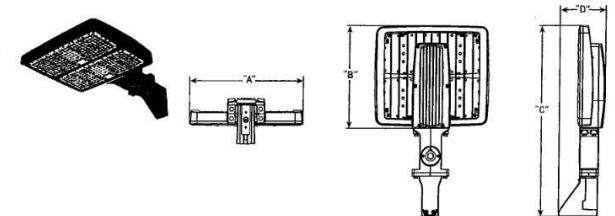
† Lumen maintenance values at 25°C (77°F) are calculated per IES TM-21 based on IES LM-80 report data for the LED package and in-the-luminaire testing. Luminaire ambient temperature factors (LAF) have been applied to all lumen maintenance factors. Please refer to the Temperature Factor Reference Document for outdoor average nighttime ambient conditions.

‡ In accordance with IES TM-21, Reported values represent interpolated values based on time durations that are up to 4x the tested duration in the IES LM-80 report for the LED.

§ Estimated values are calculated and represent time durations that exceed the test duration of the LED.

### Noctura® LED Area Luminaire

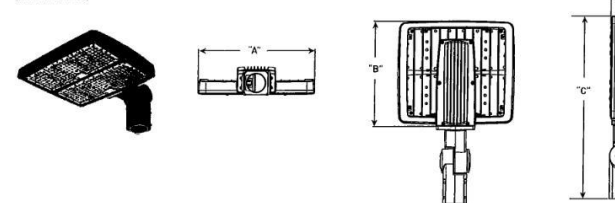
19L Direct Mount w/ Extended Arm, NEMA® 3-Pin or 7-pin Photocell Receptacle (NTA-DA-BZ-U w/ NTX-3R-BZ or NTX-7R-BZ-U)



Lumen Package	Weight*	Dim "A"	Dim "B"	Dim "C"	Dim "D"
11L	15.0 lbs. (6.8kg)	10.6" (269mm)	12.9" (328mm)	24.7" (628mm)	6.2" (157mm)
19L	18.4 lbs. (8.4kg)	10.6" (269mm)	13.8" (351mm)	25.6" (651mm)	6.2" (157mm)
35L	23.5 lbs. (10.7kg)	15.4" (391mm)	19.8" (502mm)	31.5" (801mm)	6.2" (158mm)

\* Includes housing & mount (for housing weight only refer to page 2)

19L Adjustable Arm Mount w/Knockout for Field-Installed Button Photocell (by others) (NTX-AA-BZ-U)



Lumen Package	Weight	Dim "A"	Dim "B"	Dim "C"	Dim "D"
11L	12.3 lbs. (5.6kg)	10.6" (269mm)	12.9" (328mm)	23.9" (595mm)	3.6" (92mm)
19L	15.0 lbs. (7.2kg)	15.4" (391mm)	13.8" (351mm)	23.9" (595mm)	3.7" (93mm)
35L	20.9 lbs. (9.5kg)	15.4" (391mm)	19.8" (502mm)	29.9" (760mm)	3.8" (95mm)

\* Includes housing & mount (for housing weight only refer to page 2)



US: [creelighting.com](http://creelighting.com) (800) 234-6800  
Canada: [creelighting-canada.com](http://creelighting-canada.com) (800) 473-1234

CREE LIGHTING

US: [creelighting.com](http://creelighting.com) (800) 234-6800  
Canada: [creelighting-canada.com](http://creelighting-canada.com) (800) 473-1234

CREE LIGHTING

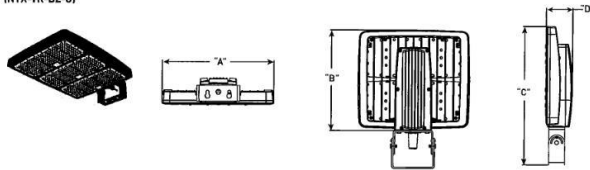
US: [creelighting.com](http://creelighting.com) (800) 234-6800  
Canada: [creelighting-canada.com](http://creelighting-canada.com) (800) 473-1234

CREE LIGHTING

# PHOTOMETRIC PRODUCT DESCRIPTION

## Noctura® LED Area Luminaire

35L  
Trunnion Mount  
INTX-TR-BZ-U



Lumen Package	Weight*	Dim "A"	Dim "B"	Dim "C"	Dim "D"
11L	11.7 lbs. (5.3kg)	10.6" (269mm)	12.9" (327mm)	16.1" (409mm)	3.6" (92mm)
19L	15.2 lbs. (6.9kg)	15.4" (391mm)	13.8" (350mm)	19.0" (482mm)	3.7" (93mm)
35L	20.3 lbs. (9.2kg)	15.4" (391mm)	19.3" (492mm)	25.0" (634mm)	3.7" (93mm)

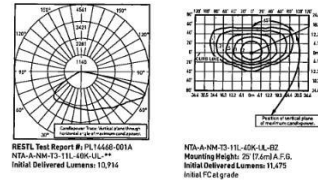
\* Includes housing & mount. For housing weight only refer to page 20.

## Noctura® LED Area Luminaire

### Photometry

All published luminaire photometric testing performed to IES LM-79 standards. To obtain an IES file specific to your project consult: <http://www.creeighting.com/products/outdoor/area/noctura-area>

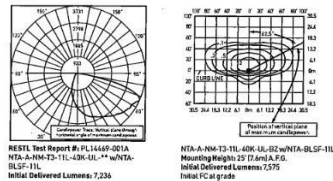
T3



Lumen Package	Initial Delivered Lumens*	BUG Ratings** Per TM 15 11	Efficacy (LPW)
11L	11,475 (4000K)	B3 U0 G2	153
19L	19,206 (4000K)	B3 U0 G3	148
35L	35,600 (4000K/5000K)	B4 U0 G3	155

\* Initial delivered lumens at 25°C (77°F). Actual production yield may vary between -10 and +10% of initial delivered lumens.  
\*\* For more information on the IES BUG (Backlight-Uplight-Glare) Rating visit: <https://www.ies.org/wp-content/uploads/2017/03/TM-15-11BUGRatingAddendum.pdf>. Valid with no tilt.

T3 w/BLS



Lumen Package	Initial Delivered Lumens*	BUG Ratings** Per TM 15 11	Efficacy (LPW)
11L	7,575 (4000K)	B1 U0 G1	101
19L	12,475 (4000K)	B2 U0 G2	98
35L	23,500 (4000K/5000K)	B3 U0 G3	102

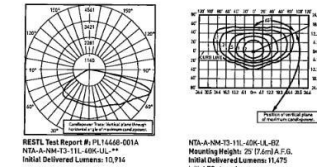
\* Initial delivered lumens at 25°C (77°F). Actual production yield may vary between -10 and +10% of initial delivered lumens.  
\*\* For more information on the IES BUG (Backlight-Uplight-Glare) Rating visit: <https://www.ies.org/wp-content/uploads/2017/03/TM-15-11BUGRatingAddendum.pdf>. Valid with no tilt.

## Noctura® LED Area Luminaire

### Photometry

All published luminaire photometric testing performed to IES LM-79 standards. To obtain an IES file specific to your project consult: <http://www.creeighting.com/products/outdoor/area/noctura-area>

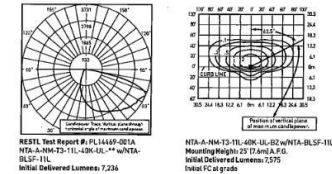
T3



Lumen Package	Initial Delivered Lumens*	BUG Ratings** Per TM 15 11	Efficacy (LPW)
11L	11,475 (4000K)	B3 U0 G2	153
19L	19,206 (4000K)	B3 U0 G3	148
35L	35,600 (4000K/5000K)	B4 U0 G3	155

\* Initial delivered lumens at 25°C (77°F). Actual production yield may vary between -10 and +10% of initial delivered lumens.  
\*\* For more information on the IES BUG (Backlight-Uplight-Glare) Rating visit: <https://www.ies.org/wp-content/uploads/2017/03/TM-15-11BUGRatingAddendum.pdf>. Valid with no tilt.

T3 w/BLS



Lumen Package	Initial Delivered Lumens*	BUG Ratings** Per TM 15 11	Efficacy (LPW)
11L	7,575 (4000K)	B1 U0 G1	101
19L	12,475 (4000K)	B2 U0 G2	98
35L	23,500 (4000K/5000K)	B3 U0 G3	102

\* Initial delivered lumens at 25°C (77°F). Actual production yield may vary between -10 and +10% of initial delivered lumens.  
\*\* For more information on the IES BUG (Backlight-Uplight-Glare) Rating visit: <https://www.ies.org/wp-content/uploads/2017/03/TM-15-11BUGRatingAddendum.pdf>. Valid with no tilt.



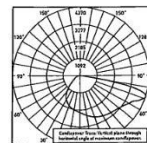
# PHOTOMETRIC PRODUCT DESCRIPTION

## Noctura® LED Area Luminaire

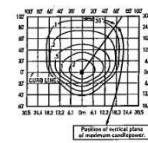
### Photometry

All published luminaire photometric testing performed to IES LM-79 standards. To obtain an IES file specific to your project consult: <http://www.creeighting.com/products/outdoor/area/noctura-area>

#### T4



RES1L Test Report #: PL1470-001A  
NTA-A-NM-T4-11L-40K-UL-\*\*  
Initial Delivered Lumens: 10,892



NTA-A-NM-T4-11L-40K-UL-8Z  
Mounting Height: 25' (7.6m) A.F.G.  
Initial Delivered Lumens: 11,475  
Initial FC at grade

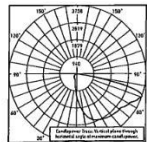
#### Type IV Medium Distribution

Lumen Package	Initial Delivered Lumens*	BUG Ratings** Per TM 15 11	Efficacy (LPW)
11L	11,475 (4000K)	R2 U0 G2	153
19L	19,200 (4000K/5000K)	R3 U0 G3	148
35L	35,400 (4000K/5000K)	R4 U0 G4	155

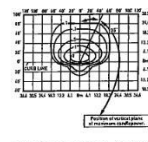
\* Initial delivered lumens at 25°C (77°F). Actual production yield may vary between -10 and +10% of initial delivered lumens.

\*\* For more information on the IES BUG (Backlight Upright Glare) Rating visit: <https://www.ies.org/wp-content/uploads/2017/03/TM-15-11BUGRatingAddendum.pdf>. Valid with no tilt.

#### T4 w/BLS



RES1L Test Report #: PL1447-001A  
NTA-A-NM-T4-11L-40K-UL-\*\* w/NTA-BLSF-1L  
Initial Delivered Lumens: 7,186



NTA-A-NM-T4-11L-40K-UL-8Z w/NTA-BLSF-1L  
Mounting Height: 25' (7.6m) A.F.G.  
Initial Delivered Lumens: 7,375  
Initial FC at grade

#### Type IV Medium w/BLS Distribution

Lumen Package	Initial Delivered Lumens*	BUG Ratings** Per TM 15 11	Efficacy (LPW)
11L	7,575 (4000K)	B1 U0 G2	191
19L	12,675 (4000K/5000K)	B1 U0 G2	98
35L	23,800 (4000K/5000K)	B2 U0 G3	162

\* Initial delivered lumens at 25°C (77°F). Actual production yield may vary between -10 and +10% of initial delivered lumens.

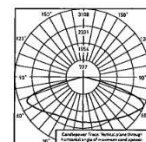
\*\* For more information on the IES BUG (Backlight Upright Glare) Rating visit: <https://www.ies.org/wp-content/uploads/2017/03/TM-15-11BUGRatingAddendum.pdf>. Valid with no tilt.

## Noctura® LED Area Luminaire

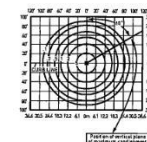
### Photometry

All published luminaire photometric testing performed to IES LM-79 standards. To obtain an IES file specific to your project consult: <http://www.creeighting.com/products/outdoor/area/noctura-area>

#### T5



Ningbo Tengji Testing Co. Test Report #: ST010130NB-1-D-R-R  
NTA-A-NM-T5-11L-50K-UL-\*\*  
Initial Delivered Lumens: 11,426



NTA-A-NM-T5-35L-40K-UL-8Z  
Mounting Height: 25' (7.6m) A.F.G.  
Initial Delivered Lumens: 35,400  
Initial FC at grade

#### Type V Medium Distribution

Lumen Package	Initial Delivered Lumens*	BUG Ratings** Per TM 15 11	Efficacy (LPW)
19L	19,200 (4000K/5000K)	R4 U0 G2	148
35L	35,400 (4000K/5000K)	R5 U0 G3	155

\* Initial delivered lumens at 25°C (77°F). Actual production yield may vary between -10 and +10% of initial delivered lumens.

\*\* For more information on the IES BUG (Backlight Upright Glare) Rating visit: <https://www.ies.org/wp-content/uploads/2017/03/TM-15-11BUGRatingAddendum.pdf>. Valid with no tilt.

## Noctura® LED Area Luminaire

### Luminaire EPA

Adjustable Arm Mount - NTX-AA-BZ-U w/housing Weight: 11L: 12.3 lbs. (5.6kg), 19L: 15.8 lbs. (7.2kg), 35L: 20.9 lbs. (9.5kg); Add 1.1 lbs. (0.5kg) for NTX-AA-7R-BZ-U mount							
Lumen Package	Single	2 @ 90°	2 @ 180°	3 @ 90°	3 @ 120°	3 @ 180°	4 @ 90°
Tenon Configuration Single (0°-45° Tilt): If used with Cree Lighting tenons, please add tenon EPA with Luminaire EPA							
	PB-1A*; PT-1; PW-1A2**	PB-2A*; PB-2R2.375; PD-2A4(90); PT-2(90)* PW-2A3**	PB-2A*; PB-2R2.375; PD-2A4(180); PT-2(180); PW-2A3**	PB-3A*; PB-3R2.375; PD-3A4(90); PT-3(90)	PB-3A*; PB-3R2.375; PT-3(120)	PB-3A*; PB-3R2.375	PB-4A*(90); PB-4R2.375; PD-4A4(90); PT-4(90)
0° Tilt							
11L	0.56	1.12	1.12	1.49	1.49	1.49	1.86
19L	0.59	1.18	1.18	1.69	1.69	1.69	2.20
35L	0.77	1.54	1.54	2.06	2.06	2.06	2.58
10° Tilt							
11L	0.56	1.12	1.12	1.44	1.44	1.44	2.20
19L	0.75	1.50	1.50	2.25	2.25	2.25	3.00
35L	0.87	1.74	1.74	2.63	2.63	2.63	3.48
20° Tilt							
11L	0.67	1.34	1.34	2.01	2.01	2.01	2.68
19L	0.94	1.92	1.92	2.88	2.88	2.88	3.84
35L	1.17	2.34	2.34	3.51	3.51	3.51	4.68
30° Tilt							
11L	0.77	1.54	1.54	2.31	2.31	2.31	3.08
19L	1.10	2.20	2.20	3.30	3.30	3.30	4.40
35L	1.39	2.78	2.78	4.17	4.17	4.17	5.56
45° Tilt							
11L	0.86	1.72	1.72	2.58	2.58	2.58	3.44
19L	1.23	2.46	2.46	3.69	3.69	3.69	4.92
35L	1.68	3.20	3.20	4.80	4.80	4.80	6.40

\* Specify pole size: 3 D1, 4 D1, 5 D1, or 6 D1 for single, double or triple luminaire orientation or 4 D1, 5 D1, or 6 D1 for quad luminaire orientation.

\*\* These EPA values must be multiplied by the following ratio: Fixture Mounting Height/Total Pole Height. Specify pole size: 3 D1, 4 D1, 5 D1, or 6 D1.

### Tenon EPA

Part Number	EPA
PB-1A*	None
PB-2A*	0.82
PB-3A*	1.52
PB-4A*(90)	2.22
PB-4A*(180)	1.11
PB-2R2.375	0.92
PB-3R2.375	1.42
PB-4R2.375	2.32
PD Series Tenons	0.09
PT Series Tenons	0.10
PW-1A2**	0.47
PW-2A3**	0.94
WM-2	0.08
WM-4	0.25

\* Specify pole size: 3 D1, 4 D1, 5 D1, or 6 D1 for single, double or triple luminaire orientation or 4 D1, 5 D1, or 6 D1 for quad luminaire orientation.  
\*\* These EPA values must be multiplied by the following ratio: Fixture Mounting Height/Total Pole Height. Specify pole size: 3 D1, 4 D1, 5 D1, or 6 D1.

Tenons and Brackets* (must specify color)			
Square Internal Mount Vertical Tenons (Steel)		Round External Mount Vertical Tenons (Steel)	
- Mounts to 3-4" (76-102mm) square aluminum or steel poles		- Mounts to 2.375" (60mm) O.D. round aluminum or steel poles or tenons	
PB-1A* - Single	PB-4A*(90) - 90° Quad	PB-2R2.375 - Twin	PB-4R2.375 - Quad
PB-2A* - 180° Twin	PB-4A*(180) - 180° Quad	PB-3R2.375 - Triple	
PB-3A* - 180° Triple			
Square Internal Mount Horizontal Tenons (Aluminum)		Round External Mount Horizontal Tenons (Aluminum)	
- Mounts to 4" (102mm) square aluminum or steel poles		- Mounts to 2.375" (60mm) O.D. round aluminum or steel poles or tenons	
PD-2A4(90) - 90° Twin	PD-3A4(90) - 90° Triple	PT-1 - Single (Vertical)	PT-3(90) - 90° Triple
PD-2A4(180) - 180° Twin	PD-4A4(90) - 90° Quad	PT-2(90) - 90° Twin	PT-3(120) - 120° Triple
PT-2(90) - 90° Twin		PT-3(180) - 180° Twin	PT-4(90) - 90° Quad
Wall Mount Brackets		Mid-Pole Bracket	
- Mounts to wall or roof		- Mounts to square pole	
WM-2 - Horizontal for NTX-AA mounts		PW-1A2** - Single	PW-2A3** - Double
WM-4 - L-Shape for NTX-AA mounts			
Ground Mount Post		For ground-mounted fixed luminaires	
- For ground-mounted fixed luminaires		PCM-1 - for NTX-AA mounts	

\* Refer to the Bracket and Tenon spec sheet for more details.



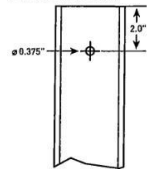


# PHOTOMETRIC PRODUCT DESCRIPTION

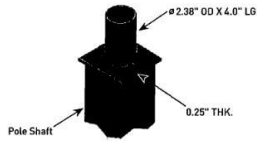
## LPI Series Straight Square Steel Poles

### Fixture Mounting Drill Patterns

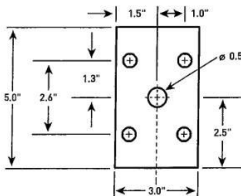
T - Open Top Mounting Configuration



W - Welded Tenon Top Mounting Configuration



E - THE EDGE® High Output Mounting Drill Pattern



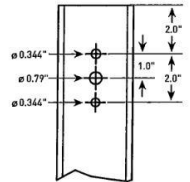
### Tenon EPA

Part Number	EPA
PB-1A*	None
PB-2A*	0.02
PB-3A*	1.52
PB-4A* (180)	2.22
PB-4A* (90)	1.11
PD Series Tenons	0.09
XA-TM04B	0.07

### Optional GFI (shown on 4-6" pole)



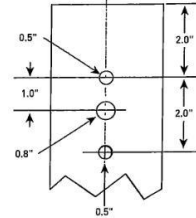
Standard Cree Lighting Fixture Mounting Drill Pattern



### CONSTRUCTION & MATERIALS

- Heavy-duty steel construction
- Lockable security cover
- Includes adapter plates and foam gasket
- 20A, 120V, 60Hz GFCI, and cover also included
- 3-1/4" internal depth
- Standard GFI is located 28" above the pole base on the same side as the hand hole. Consult factory for placement in other locations
- Weatherproof while in use
- Meets NEC Extra Duty requirements
- Receptacle and cover ship separately in hardware bag

Ø - Ø50x4 Fixture Mounting Drill Pattern



## LPI Series Straight Square Steel Poles

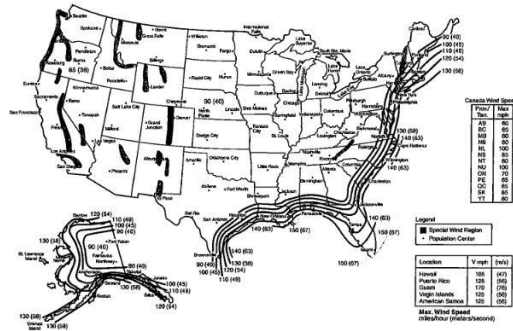
### Dimensions, EPA & Weight

Pole	Face (A) x Wall (B) x Height (C)	Base Plate (D) x Thickness	Bolt Circle (E) x Min (F) x Max (G)	Bolt Hole Size (H)	Base Cover (I) x Height (J)	AASHTO LTS-4					Maximum Luminaire Weight	Approx. Shipping Weight
						80	90	100	120	140		
LPGC10"-Ø	3" x 11ga. x 10'	8" Sq. x 0.75"	8.5"Ø-9"	1"	9.88" Sq. x 5.25"	20.2	15.4	12.28	7.94	5.33	150 lbs.	41 lbs.
LPGC15"-Ø	3" x 11ga. x 15'	8" Sq. x 0.75"	8.5"Ø-9"	1"	9.88" Sq. x 5.25"	11.75	8.68	6.48	3.62	1.9	150 lbs.	85 lbs.
LPAC10"-Ø	4" x 11ga. x 10'	8" Sq. x 0.75"	8.5"Ø-9"	1"	9.88" Sq. x 5.25"	31.2	28.8	22.8	14.98	10.27	150 lbs.	96 lbs.
LPAC12"-Ø	4" x 11ga. x 12'	8" Sq. x 0.75"	8.5"Ø-9"	1"	9.88" Sq. x 5.25"	29.87	22.92	17.94	11.45	7.53	150 lbs.	100 lbs.
LPAC13"-Ø	4" x 11ga. x 13'	8" Sq. x 0.75"	8.5"Ø-9"	1"	9.88" Sq. x 5.25"	27.03	20.61	16.02	6.61	4.51	150 lbs.	114 lbs.
LPAC14"-Ø	4" x 11ga. x 14'	8" Sq. x 0.75"	8.5"Ø-9"	1"	9.88" Sq. x 5.25"	24.54	18.58	14.31	8.76	5.41	150 lbs.	120 lbs.
LPAC15"-Ø	4" x 11ga. x 15'	8" Sq. x 0.75"	8.5"Ø-9"	1"	9.88" Sq. x 5.25"	22.33	16.78	12.81	7.63	4.51	150 lbs.	126 lbs.
LPAC17"-Ø	4" x 11ga. x 17'	8" Sq. x 0.75"	8.5"Ø-9"	1"	9.88" Sq. x 5.25"	18.57	13.69	10.2	5.65	2.91	150 lbs.	138 lbs.
LPAC18"-Ø	4" x 11ga. x 18'	8" Sq. x 0.75"	8.5"Ø-9"	1"	9.88" Sq. x 5.25"	16.75	12.21	8.96	4.73	2.29	150 lbs.	144 lbs.
LPAC20"-Ø	4" x 11ga. x 20'	8" Sq. x 0.75"	8.5"Ø-9"	1"	9.88" Sq. x 5.25"	13.44	9.65	6.8	3.09	0.85	150 lbs.	156 lbs.
LPAC22"-Ø	4" x 11ga. x 22'	8" Sq. x 0.75"	8.5"Ø-9"	1"	9.88" Sq. x 5.25"	11.03	7.5	4.97	1.68	N/A	150 lbs.	168 lbs.
LPAC23"-Ø	4" x 11ga. x 23'	8" Sq. x 0.75"	8.5"Ø-9"	1"	9.88" Sq. x 5.25"	9.87	6.54	4.15	1.94	N/A	150 lbs.	174 lbs.
LPAC25"-Ø	4" x 11ga. x 25'	8" Sq. x 0.75"	8.5"Ø-9"	1"	9.88" Sq. x 5.25"	7.8	4.8	2.65	N/A	N/A	150 lbs.	191 lbs.
LPAS20"-Ø	4" x 7ga. x 20'	8" Sq. x 0.75"	8.5"Ø-9"	1"	9.88" Sq. x 5.25"	21.6	15.64	11.76	6.71	3.66	150 lbs.	222 lbs.
LPAS22"-Ø	4" x 7ga. x 22'	8" Sq. x 0.75"	8.5"Ø-9"	1"	9.88" Sq. x 5.25"	17.85	13.01	9.56	5.05	2.34	150 lbs.	244 lbs.
LPAS25"-Ø	4" x 7ga. x 25'	8" Sq. x 0.75"	8.5"Ø-9"	1"	9.88" Sq. x 5.25"	13.93	9.79	6.83	2.97	0.64	150 lbs.	259 lbs.
LPSS20"-Ø	5" x 7ga. x 20'	11" Sq. x 1"	11"Ø-12"	1.25"	12.12" Sq. x 6"	38.9	29.39	22.59	13.73	8.38	150 lbs.	304 lbs.
LPSS22"-Ø	5" x 7ga. x 22'	11" Sq. x 1"	11"Ø-12"	1.25"	12.12" Sq. x 6"	33.32	24.86	18.82	10.94	6.19	150 lbs.	336 lbs.
LPSS25"-Ø	5" x 7ga. x 25'	11" Sq. x 1"	11"Ø-12"	1.25"	12.12" Sq. x 6"	26.55	19.35	14.19	7.48	3.63	150 lbs.	351 lbs.
LPSS30"-Ø	5" x 7ga. x 30'	11" Sq. x 1"	11"Ø-12"	1.25"	12.12" Sq. x 6"	18.05	12.33	8.24	2.91	N/A	150 lbs.	422 lbs.
LPKS30"-Ø	6" x 7ga. x 30'	12" Sq. x 1"	11.5"Ø-11.12"	1.25"	13.5" Sq. x 5.5"	27.25	19.11	13.59	5.71	1.14	150 lbs.	503 lbs.

\* Mounting configuration, fixture mounting drill pattern, color options, and pole options from ordering table on page 1.

NOTE: Flanging signs, banners and flags on poles changes the EPA rating and increases vibration. The EPA ratings data provided does not allow for this added stress which could result in pole or luminaire failure.

This map indicates approximate maximum wind zones throughout the U.S. Base wind velocities are established using a 50-year recurring mean. The EPA rating of the pole must be equal to or greater than that of the luminaire(s), taking into consideration the wind conditions at the job site.



### Tenons and Brackets\* (must specify color)

Square Internal Mount Vertical Tenons (Steel)  
- Mounts to 3-6" (76-152mm) square aluminum or steel poles  
- For use with adjustable arm & horizontal/vertical tenon mounts  
- Not for use with THE EDGE® Area Round Post Top mounts

PB-1A\* - Single PD-4A\*(90) - 90° Quad  
PB-2A\* - 180° Twin PD-4A\*(180) - 180° Quad  
PB-3A\* - 180° Triple

Square Internal Mount Horizontal Tenons (Aluminum)  
- Mounts to 3-6" (76-152mm) square aluminum or steel poles  
- For use with adjustable arm mounts and RUL luminaires  
- Not for use with THE EDGE® High Output or OSOQ Area/Flood luminaires

PD-2A(90) - 90° Twin PD-3A(90) - 90° Triple  
PD-2A(180) - 180° Twin PD-4A(180) - 90° Quad

Square Internal Mount Horizontal Tenons (Aluminum)  
- Mounts to 3-6" (76-152mm) square aluminum or steel poles  
- For use with horizontal tenon mounts that require extended tenon length  
- Not for use with THE EDGE® High Output or OSOQ Area/Flood luminaires

PD-11A - Single PD-3H(90) - 90° Triple  
PD-2H(90) - 90° Twin PD-4H(90) - 90° Quad  
PD-2H(180) - 180° Twin

Direct Arm Pole Adaptor Bracket (Aluminum)  
- Mounts to 3-6" (76-152mm) round or square aluminum or steel poles  
- For use with horizontal tenon mounts that require extended tenon length  
- Not for use with THE EDGE® High Output or OSOQ Area/Flood luminaires

XA-TM04B

\* Refer to the Bracket and Tenon spec sheets for more details on tenons. Refer to product specification sheets for compatible tenons.

\* Specify pole size 3"Ø, 4"Ø, 5"Ø, or 6"Ø for single or double orientation or 4"Ø, 5"Ø, or 6"Ø for quad luminaire orientation.

US: [creelightingusa.com](mailto:creelightingusa.com) (800) 236-4800  
Canada: [creelighting-canada.com](mailto:creelighting-canada.com) (800) 473-1234

**CREE LIGHTING**

US: [creelightingusa.com](mailto:creelightingusa.com) (800) 236-4800  
Canada: [creelighting-canada.com](mailto:creelighting-canada.com) (800) 473-1234

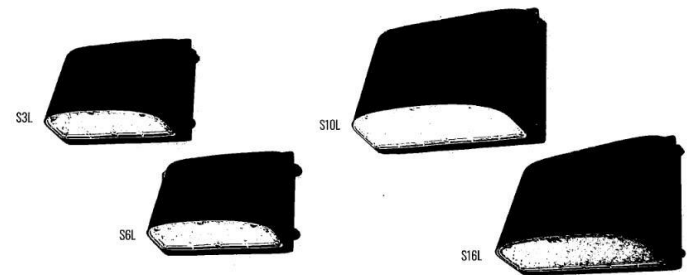
**CREE LIGHTING**

## C-WP-C-RDC Series

Cutoff LED Wall Pack | Field Selectable CCT & Wattage

Replaces up to 400W MH

**C-LITE**  
LED LIGHTING



### UNLEASH VERSATILITY AND RELIABILITY

Illuminate your outdoor spaces with the exceptional performance and flexibility of our Cutoff LED Wall Pack. Designed to exceed expectations, this cutting-edge fixture combines field selectable wattage, CCT selection of 3000K, 4000K, or 5000K, and robust surge protection to safeguard against power surges. Tailor the brightness of your space to perfection with the field selectable wattage feature, allowing you to adjust the lighting output according to your specific requirements. Enjoy enhanced energy efficiency without compromising on illumination quality. Always backed by our standard 5-year warranty, this dLus Listed fixture is the perfect solution for a wide range of outdoor applications.

### PRODUCT SPECIFICATIONS

#### OVERVIEW

- Initial Delivered Lumens: Up to 3300 Lumens (S3L), Up to 6000 Lumens (S6L), Up to 10,000 Lumens (S10L), Up to 16,000 Lumens (S16L)
- CRI: ≥ 70
- CCT: Field Selectable (3000K/4000K/5000K)
- Max. Input Power: 23W (S3L), 42W (S6L), 72W (S10L), 110W (S16L)
- Operating Temperature Range: -40°F to 104°F (-40°C to 40°C)
- Replaces: 100W PSMH (S3L), 175W MH (S6L), 250W PSMH (S10L), 400W MH (S16L)
- Estimated L70 Lifetime @ 25°C: > 97,000 hours
- Power Factor: > 0.9 at full load
- Total Harmonic Distortion: < 20% at full load
- Limited Warranty: 5-Year\*

FEATURES	RECOMMENDED USE	INPUT VOLTAGE
<ul style="list-style-type: none"><li>FCC Part 15, Subpart B, Class B limits for conducted and radiated emissions</li><li>3000K, 4000K or 5000K color temperature options</li><li>4kV surge protection</li></ul>	<ul style="list-style-type: none"><li>Security</li><li>Perimeter</li><li>Commercial</li></ul>	<ul style="list-style-type: none"><li>Universal (120V through 277V Operation)</li></ul>

### CERTIFICATIONS:



CA RESIDENTS WARNING: Cancer and Reproductive Harm - [www.p65warnings.ca.gov](http://www.p65warnings.ca.gov)

Rev. Date: 07/24/2023

For informational purposes only. Content is subject to change. \*See [creelighting.com/resources/warranties](http://creelighting.com/resources/warranties)

# PHOTOMETRIC PRODUCT DESCRIPTION

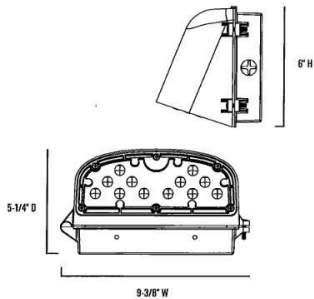
## C-WP-C-RDC Series

ORDERING INFORMATION  
Example SKU: C-WP-C-RDC-S3L-SCCT-DB

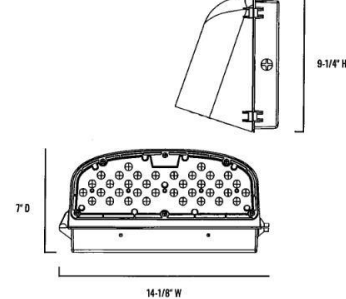
C-WP	C	RDC		SCCT	DB
PRODUCT	SERIES	TYPE	LUMEN PACKAGE*	FIELD SELECTABLE CCT	HOUSING COLOR
C-WP	C	RDC Round Cutoff	<b>S3L</b> Up to 3300 Lumens (Max input 23W) <b>S6L</b> Up to 6000 Lumens (Max input 42W) <b>S10L</b> Up to 10,000 Lumens (Max input 72W) <b>S16L</b> Up to 16,000 Lumens (Max input 110W)	<b>SCCT</b> Warm White (3000K) Neutral White (4000K)* Cool White (5000K)	<b>DB</b> Dark Bronze

\*Default settings at time of shipping are highest product wattage and 4000K. Lumen output at full power at 4000K.

### S3L & S6L



### S10L & S16L



### SERIES OVERVIEW

DIMENSIONS	PRODUCT WEIGHT	MOUNTING HEIGHT	SPACING
9-3/8" W x 5-1/4" D x 6" H (S3L & S6L)	3 lbs.	10-15 feet	2 to 3 times the mounting height
14-1/8" W x 7" D x 9-1/4" H (S10L & S16L)	5.6 lbs.		

## C-WP-C-RDC Series

### FIXTURE SPECIFICATIONS

HOUSING	Heavy duty die-cast aluminum with a durable powder coat dark bronze finish.
LENS ASSEMBLY	Integrated UV stabilized polycarbonate lens is designed to control the light and offer the most efficiency.
MOUNTING	1/2-inch threaded knockouts provided for conduit entry or mount over a recessed j-box. Knockouts are located on both sides and the top of the back box.

### ELECTRICAL PERFORMANCE

OPERATING TEMPERATURE RANGE	ESTIMATED L <sub>90</sub> LIFETIME @ 25°C (77°F)	POWER FACTOR	TOTAL HARMONIC DISTORTION
-40°F to 104°F (-40°C to 40°C)	> 97,000 Hours	> 0.9 at full load	< 20% at full load

LUMEN PACKAGE*	REPLACES	INITIAL DELIVERED LUMENS & BUG RATINGS PER TM-15-20				SYSTEM WATTS	CURRENT DRAW (AMPS)			
		3000K/5000K	BUG RATINGS*	4000K	BUG RATINGS*		120V	208V	240V	277V
S3L	100W PSMH	3000	B1-U0-G1	3300	B1-U0-G1	23W	0.19	0.11	0.10	0.08
		2430		2670		19W	0.16	0.09	0.08	0.07
		1650	B1-U0-G0	1820		12W	0.10	0.06	0.05	0.04
S6L	175W MH	5500	B2-U0-G1	6000	B2-U0-G1	42W	0.35	0.20	0.18	0.15
		4330		4760		32W	0.27	0.15	0.13	0.12
		2950	B1-U0-G1	3250		21W	0.18	0.10	0.09	0.08
S10L	250W PSMH	9125	B2-U0-G2	10,000	B2-U0-G2	72W	0.60	0.35	0.30	0.26
		6950		7650		54W	0.45	0.26	0.23	0.19
		4730	B1-U0-G1	5200		35W	0.29	0.17	0.15	0.13
S16L	400W MH	14,675	B3-U0-G2	16,000	B3-U0-G2	110W	0.92	0.53	0.46	0.40
		11,550		12,700		87W	0.73	0.42	0.36	0.31
		7900	B2-U0-G1	8700		57W	0.48	0.27	0.24	0.21

\* Default settings at time of shipping are highest product wattage and 4000K.

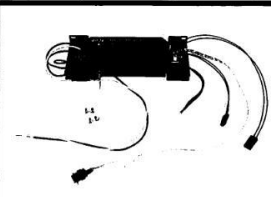


\* For more information on the IES BUG (Backlight-Uplight-Glare) Rating visit: <https://www.ies.org/wp-content/uploads/2017/03/TM-15-118BUGRatingAddendum.pdf>. Valid with no ILL.

### WARRANTY AND CERTIFICATIONS

WARRANTY	cULus LISTED	DLC
5-Year Limited*	Wet Locations	5.1 Premium Refer to <a href="https://www.designlights.org/search/">https://www.designlights.org/search/</a> for most current information.

## C-WP-C-RDC Series

### ACCESSORIES (SOLD SEPARATELY)

	<b>8W EMERGENCY BATTERY BACKUP KIT</b>  SKU: C-ACC-EB-8W-KIT-UL USE: Install the EM driver and EM battery kit inside the back box by following instruction sheet provided. Quick connectors have been added where possible, to help make installation easy. Provides 90 minutes and a minimum of 1010 lumens in Emergency Backup (EB) mode. 1010 - 1240 lumens based on efficacy of different lumen packages. Operating temperature: 32°F to 104°F (0°C to 40°C) *NOTE: Not compatible with S3L and S6L lumen packages.
	<b>UNIVERSAL BUTTON PHOTOCELL (120V-277V)</b>  SKU: CCR-PHC-0306-GC USE: Photocell is field installed and drilling of the back box is required. 500W Max.
	<b>UNIVERSAL BUTTON PHOTOCELL (120V-277V)</b>  SKU: JL-423CZ USE: Photocell is field installed and drilling of the back box is required. 1000W Max.



# BUILDING ELEVATIONS

Existing building





# BUILDING ELEVATIONS

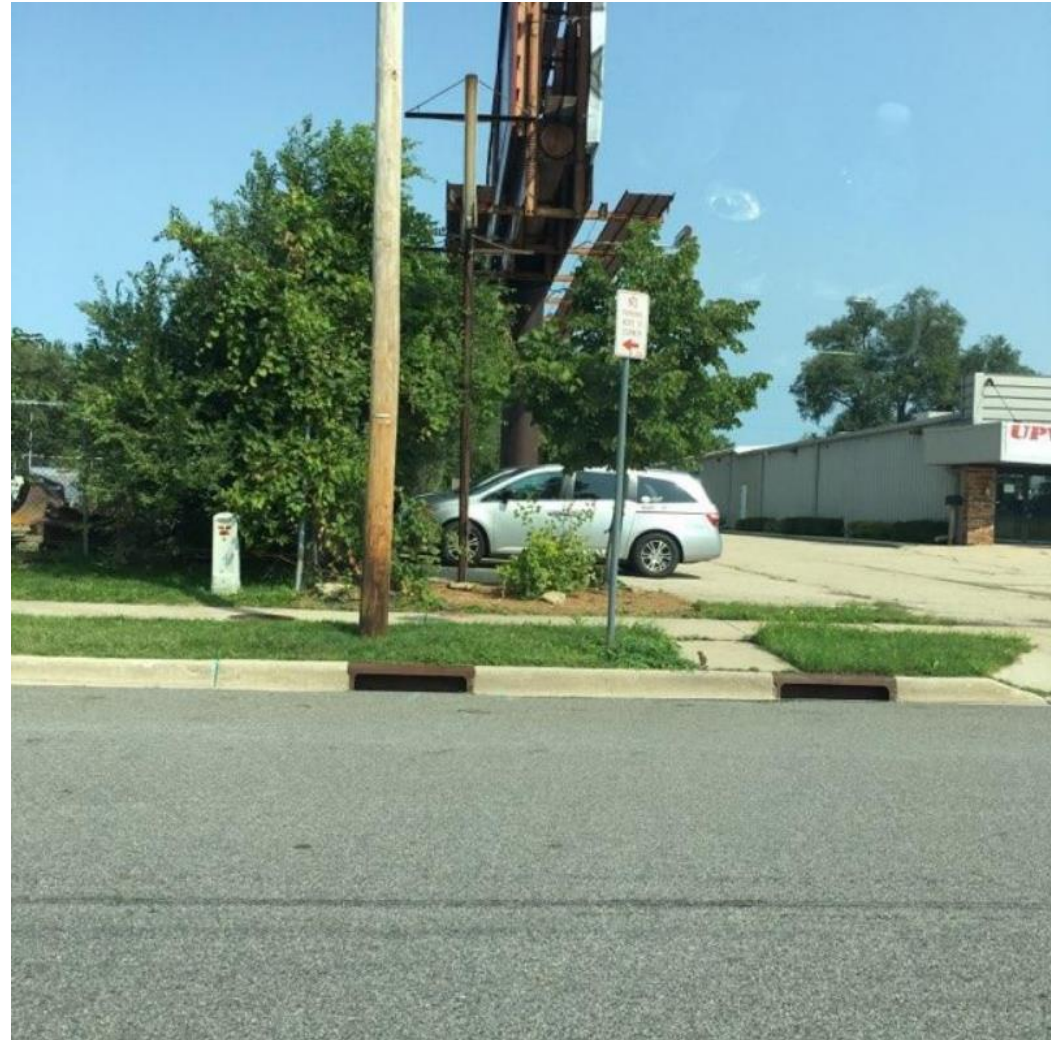
Existing building





# BUILDING ELEVATIONS

Existing building



# BUILDING ELEVATIONS

Neighboring building





# BUILDING ELEVATIONS

Proposed Addition Rendering





## Proposed Addition



PROPOSED BUILDING FOR:  
19-0754

### SCALE VERIFICATION

**NOTICE OF COPYRIGHT**  
THESE PLANS ARE COPYRIGHTED AND ARE SUBJECT TO COPYRIGHT PROTECTION AS PER "ARCHITECTURAL WORK" UNDER SECTION 110 OF THE COPYRIGHT ACT, 11 U.S.G. AS AMENDED DECEMBER 1989 AND KNOWN AS ARCHITECTURAL WORK OF COPYRIGHT PROTECTION ACT OF 1988. THE PROTECTION INCLUDES BUT IS NOT LIMITED TO THE OVERALL FORM AS WELL AS THE ARRANGEMENT AND COMPOSITION OF SPACES AND ELEMENTS OF THE DESIGN UNDER SUCH PROTECTION. UNAUTHORIZED USE OF THESE PLANS, WORK OR BUILDING CONSTRUCTION OR REPRODUCTION OR REVISION OR CONSTRUCTION OR BUILDINGS BEING SIZED AND/OR MONETARY COMPENSATION TO BAYLAND BUILDINGS, INC.

**JOB NUMBER: 19-0754**

**PROJECT EXECUTIVE:** DAVE PHILLIPS  
(262) 308-2580

**DRAWN BY:** AJR/CRP/JRG  
**DATE:** 11/15/23

DATE: 11/15/23

REVISIONS:

ISSUED FOR:      CHECKED      DATE  
BY:

- ☐ PRELIMINARY
  - ☒ BID SET
  - ☐ DESIGN REVIEW
  - ☐ CHECKSET
  - ☐ CONSTRUCTION

### EXTERIOR ELEVATIONS

A2.0



# EXTERIOR BUILDING MATERIALS/ COLOR SCHEME

David Phillips

From: Jeffrey Miller <JMiller@kelbebro.com>  
Sent: Tuesday, November 07, 2023 3:35 PM  
To: David Phillips  
Subject: Kelbe exterior paint colors

Dave,

The plan is the following for our buildings:

- Existing small brown brick will be painted Sherwin Williams SW 9565 Forged Steel
- Existing cream-colored block and metal will be painted Sherwin Williams SW 7015 Repose Gray

Thanks,

Jeff

Jeffrey J. Miller | President | Kelbe Brothers Equipment, Inc.  
12770 W. Silver Spring Dr. | Butler, WI 53007  
262-373-2123 direct | 414-254-9921 mobile | 262-373-2101 fax  
[jmiller@kelbebro.com](mailto:jmiller@kelbebro.com) | [www.kelbebro.com](http://www.kelbebro.com)

NOTE: This email message and any attachments are for the sole use of the intended recipient(s) and may contain confidential and/or privileged information. Any unauthorized review, use, disclosure or distribution is prohibited. If you are not the intended recipient, please contact the sender by replying to this email, and destroy all copies of the original message.

This email has been scanned for spam and viruses by Proofpoint Essentials. Click [here](#) to report this email as spam.

SW 7015

Repose Gray

SW 9565

Forged Steel



# NOTIFICATION LETTERS

## David Phillips

---

**From:** Adam Ryan <aryan@quamengineering.com>  
**Sent:** Wednesday, February 21, 2024 2:40 PM  
**To:** David Phillips; Bryan Boger  
**Subject:** UDC Items  
**Attachments:** 1-4701 LND-A 121423 Demo.pdf; 3- Alder Notification 4621\_Dutch\_Mill\_Rd.eml; 4621 Dutch Mill Road 2023-11-30.pdf; 2- Business Notification 4621\_Dutch\_Mill\_Rd (1).eml

**Follow Up Flag:** Follow up  
**Flag Status:** Flagged

Dave,  
Attached is the following:

- Land Use Application that was used for the demo permit
  - You will likely need to fill out a new application for this submittal and have Jeff sign it.
- Full Set of civil plans
- Email notification to Alder for both the demo permit and UDC.
- Email notification to Business Association for both the demo permit and UDC.

If there is anything else you need while I'm gone, I've copied Bryan Boger in our office to this email. He can help you with anything you need from Quam or find someone in our office who can.  
-Adam

## David Phillips

---

**From:** Adam Ryan <aryan@quamengineering.com>  
**Sent:** Friday, December 01, 2023 10:51 AM  
**To:** district16@cityofmadison.com  
**Cc:** David Phillips; jmiller@kelbeebros.com  
**Subject:** 4621 Dutch Mill Rd  
**Attachments:** 4621 Dutch Mill Road 2023-11-30.pdf

Good Afternoon Alder Jael Currie,

This email is an official notification that there is a UDC Application being submitted for the 4621 Dutch Mill Rd property in your district. Additionally, there is an application being submitted for a demolition permit, for the neighboring house to the northeast that will be demolished in order to expand the property.

Please contact me if you have any questions.

Thank you,

Adam

**Adam W. Ryan, P.E.**

Quam Engineering, LLC

4604 Siggelkow Road, Suite A

McFarland, WI 53558

Phone: (608) 838-7750

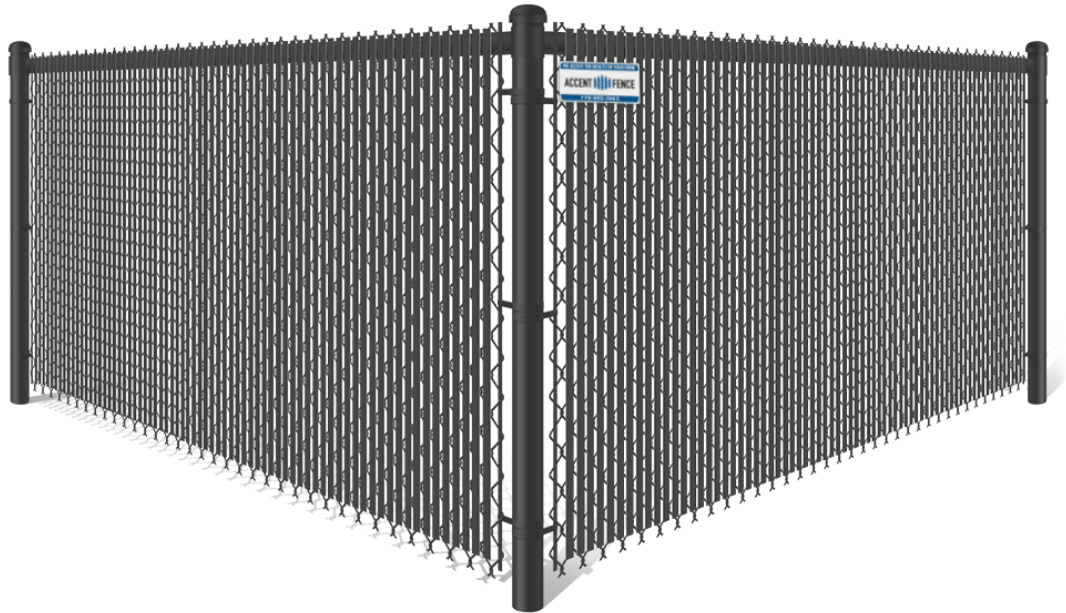
Email: [aryan@quamengineering.com](mailto:aryan@quamengineering.com)





# FENCING EXAMPLES

Powder Coated fence with gray privacy slats



# THANK YOU



Dave Phillips, Bayland Buildings



262-308-2580



[dphillips@baylandbuildings.com](mailto:dphillips@baylandbuildings.com)

