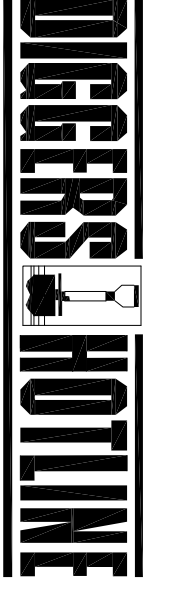


**EROSION NOTES:**

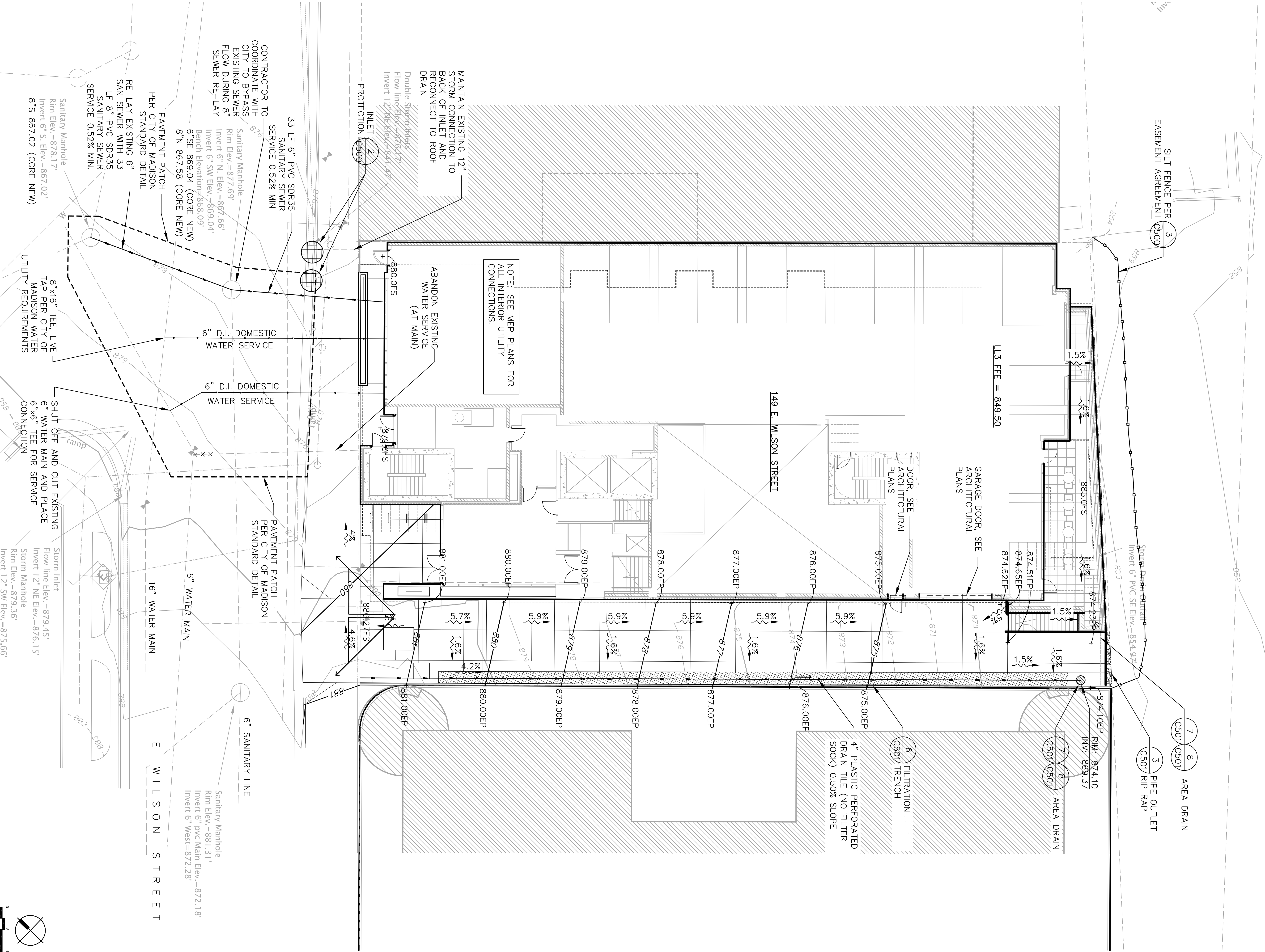
- A. THE CONTRACTOR SHALL MINIMIZE THE AMOUNT OF DISTURBED AREA.
  - B. THERE ARE A LIMITED NUMBER OF DOWNSTREAM INLETS IN OR NEAR THE DISTURBED AREA. THE CONTRACTOR SHALL PROVIDE PROTECTION ON EXISTING AND PROPOSED INLETS ONCE THEY ARE CONSTRUCTED.
  - C. SUGGESTED LOCATIONS FOR INSTALLATION OF EROSION CONTROL ITEMS ARE SHOWN IN THE PLANS. FINAL LOCATIONS SHALL BE DETERMINED BY THE ENGINEER. EROSION CONTROL ITEMS SHALL BE PLACED PRIOR TO CONSTRUCTION. EROSION CONTROL ITEMS SHALL BE MAINTAINED UNTIL SUCH TIME THAT THE ENGINEER DETERMINES NO LONGER NEEDED.
  - D. EROSION CONTROL ITEMS SHALL BE INSTALLED IN SUCH A MANNER AS TO MINIMIZE EROSION. SOIL STABILIZATION MEASURES SHALL BE APPLIED TO ALL DISTURBED AREAS. ALL DISTURBED AREAS SHALL BE PROTECTED WITH SEED, FERTILIZER AND MULCH/MAT.
  - E. ALL DISTURBED AREAS SHALL BE STABILIZED WITH SOIL STABILIZER TYPE B IF THERE IS A DELAY OF MORE THAN 7 CALENDAR DAYS BETWEEN INITIAL GRADING AND FINAL TOPSOIL AND SEEDING. SOIL STABILIZER APPLICATION SHALL BE AT THE END OF ACTIVE HYDROLOGIC DISTURBANCE OR PERMANENT MEASURES WITHIN 7 CALENDAR DAYS OF THE END OF ACTIVE HYDROLOGIC DISTURBANCE OR PERMANENT MEASURES.
  - F. ALL DISTURBED AREAS SHALL BE STABILIZED WITH TEMPORARY EROSION CONTROL MEASURES WITHIN 7 CALENDAR DAYS OF THE END OF ACTIVE HYDROLOGIC DISTURBANCE OR PERMANENT MEASURES.
  - G. ALL TEMPORARY EROSION AND SEDIMENT CONTROL MEASURES SHALL BE MAINTAINED UNTIL SUCH TIME THAT THE ENGINEER DETERMINES NO LONGER NEEDED.
  - H. A TRACKING MAT WILL NOT BE REQUIRED DUE TO THE LIMITED NATURE OF DISTURBANCE FOR THIS BUILDING. THE EROSION CONTROL MEASURES SHALL BE MAINTAINED UNTIL SUCH TIME THAT THE ENGINEER DETERMINES NO LONGER NEEDED. ADDITIONAL MEASURES MAY BE REQUIRED AS DIRECTED BY THE ENGINEER OR GOVERNING AGENCY.
  - I. CONSTRUCTION ACCESS TO THE SITE WILL ONLY BE FROM THE EXISTING DRIVEWAY. CONSTRUCTION ACCESS TO THE SITE AND DAWSON ROAD ARE CLEANED UP FROM DIRT AND TRACKED MUD AT THE END OF EACH DAY.
  - J. BORROW MATERIAL FOR SLOPE CONSTRUCTION NEED NOT BE STRUCTURAL FILL, BUT MUST BE REASONABLY FREE OF Boulders OR DEBRIS TO ALLOW EASE OF PLACEMENT.
- ANTICIPATED CONSTRUCTION SCHEDULE:**
1. INSTALL INLET PROTECTION AS DETAILED ON THE PLAN.
  2. REMOVE EXISTING ITEMS AS DETAILED IN THE DEMOLITION PLAN.
  3. CONSTRUCT BUILDING AND UTILITIES AS PRESCRIBED IN THE PLAN. CONTRACTOR SHALL INSTALL PHASE 1 STORM SEWER AS SOON AS POSSIBLE TO PROVIDE DRAINAGE FOR LOW SPOT ON SITE. THE CONTRACTOR SHALL BE RESPONSIBLE FOR THE STORM SEWER HAS BEEN CUT OFF DUE TO FOUNDATION CONSTRUCTION.
  4. GRADE AREA IMMEDIATELY ADJACENT TO THE NEW BUILDING FOR PAVEMENT AND CURB CONSTRUCTION.
  5. CONSTRUCT PAVEMENT, CURB & SIDEWALK.
  6. RESTORE DISTURBED AREAS WITH TEMPORARY SEEDING IN ACCORDANCE WITH THE SPECIFICATIONS. SEEDING SHALL BE COMPLETED ALONG WEST AND NORTHWEST PROPERTY LINES.
  7. TOPSOIL, SEED AND MULCH/EROSION MAT ALL DISTURBED AREAS.
  8. INSTALL LANDSCAPING PLANTS.
  9. REMOVE EROSION CONTROL ITEMS.
- SEEDING AND STABILIZATION INFORMATION & DEADLINES ARE AS FOLLOWS:**
- SEEDING TO USE HWY MIX #20 AT A RATE OF 2.5 LBS/1000 SF
  - CONTRACTOR TO APPLY FERTILIZER AT A RATE OF 2 LBS/1000 SF
  - AFTER SEPTEMBER 15TH, A COOL WEATHER SEEDING COVER CROP MUST BE APPLIED (I.E. OATS)
  - AFTER OCTOBER 15TH, A DORMANT SEEDING COVER CROP MUST BE APPLIED (I.E. WINTER WHEAT)
  - AFTER NOVEMBER 15TH, A DORMANT SEEDING MUST BE APPLIED WITH AN ACCEPTABLE SOIL STABILIZER (POLYACRYLAMIDE)

**UTILITY NOTES:**

- THE CONTRACTOR SHALL CONTACT DIGGERS HOTLINE A MINIMUM OF 3 WORKING DAYS PRIOR TO THE START OF CONSTRUCTION.
- STANDARD SPECIFICATIONS, PERFORM ALL WORK IN ACCORDANCE WITH THE PROVISIONS OF:
- STANDARD SPECIFICATIONS FOR SEWER AND WATER CONSTRUCTION IN WISCONSIN\* (WMS) LATEST EDITION
  - STATE OF WISCONSIN DEPARTMENT OF TRANSPORTATION, DIVISION OF HIGHWAYS STANDARD SPECIFICATIONS FOR ROAD AND BRIDGE CONSTRUCTION (MS03) LATEST EDITION
  - CONTRACTOR SHALL OBTAIN A CURRENT COPY OF THE TOWN/CITY OF MADISON'S STANDARD SPECIFICATIONS FOR THE START OF CONSTRUCTION.
- INCLUDING ALL SUPPLEMENTAL SPECIFICATIONS AND OTHER REVISIONS TO DATE, UNLESS OTHERWISE SPECIFIED IN THE SPECIFICATIONS.
- WITHIN THE RIGHT-OF-WAY OR UNDERPANTY PAVEMENTS OR BUILDINGS, GRANULAR TRENCH BACKFILL MUST BE USED TO FILL THE TRENCH BACKFILL PROVIDING THAT THE MATERIAL IS FREE OF ORGANIC MATERIAL AND STONES LARGER THAN 6" IN DIAMETER.
- A MEANS TO LOCATE BURIED UNDERGROUND INTERIOR NON METALLIC SEWERS/MAINS AND WATER SERVICES/MAINS MUST BE PROVIDED WITH TRACER WIRE OR OTHER METHODS IN ORDER TO BE LOCATED IN ACCORD WITH THE PROVISIONS OF THESE CODE SECTIONS AS PER 92.07(9)(20) OF THE STATUTES.
- WATER DISTRIBUTION SYSTEM:**
- MAIN:
- DUCTILE IRON (D.I.) AWWA C-151 CLASS 52 WITH CABLE BOND CONDUCTORS, FURNISHED AND INSTALLED PER CHAPTER 8.180 (WMS) OR
  - POLYVINYL CHLORIDE (PVC) AWWA C-900, FURNISHED AND INSTALLED PER CHAPTER 8.200 (WMS)
- ALL WATER MAIN JOINTS SHALL BE RESTRAINED.
- LATERALS:**
- 4" - PVC AWWA C-900, CL150, SDR 18 OR DUCTILE IRON AWWA C-151, CLASS-52
  - 2" & SMALLER - HIGH DENSITY POLYETHYLENE (HDPE) AWWA C-901, SDR 11
- WATER LATERAL AND HYDRANT TEES SHALL BE ANCHORED.
- SANITARY SEWER:**
- MAIN:
- 8" & 12" - POLYVINYL CHLORIDE (PVC) ASTM D 3034, SDR-35 (BURY DEPTH 16" OR LESS)
  - 8" & 12" - POLYVINYL CHLORIDE (PVC) ASTM D 3034, SDR-26 (BURY DEPTH 22" TO 18")
- STORM SEWER:**
- STORM SEWER SPECIFIED AS RCP SHALL BE REINFORCED CONCRETE PIPE CONFORMING TO THE FOLLOWING SPECIFICATIONS:
  - 12" DIA - CLASS V RCP
  - 15" DIA - CLASS IV RCP
  - 18" DIA - CLASS III RCP
- STORM SEWER SPECIFIED AS HDPE SHALL BE CORRUGATED HDPE, SMOOTH INTERIOR.
- STORM SEWER PIPE, REINFORCED CONCRETE PIPE (RCP) CONFORMING TO THE MINIMUM REQUIREMENTS OF ASTM D 3034, SDR-35 (BURY DEPTH 16" OR LESS), AN APPROVED RUBBER GASKET JOINT SHALL BE USED FOR EITHER OPTION. JOINTS FOR RCP SHALL CONFORM TO ASTM D-471. JOINTS FOR HDPE SHALL CONFORM TO ASTM F-4472.
- ALL PERFORATED DRAIN TILE SHALL BE PLASTIC WITHOUT A FILTER SOCK.
- AT EACH POINT WHERE A STORM SEWER "DAUGHTERS", A MARKER POST EQUIVALENT TO THOSE SPECIFIED BY WSDOT, SHALL BE INSTALLED AT THE END TO MARK THE LOCATION.
- SPOT ELEVATION ABBREVIATIONS:**
- P = PAVEMENT
  - EP = EDGE OF PAVEMENT
  - F3 = FINISHED GRADE
  - FS = TOP OF STAIRS
  - BS = BOTTOM OF STAIRS
  - TL = TOP OF WALL
  - BW = BOTTOM OF WALL
  - EX = EXISTING ELEVATION
- SITE SURVEYING PERFORMED BY SITHMUS SURVEYING AND ADDITIONAL UTILITY INFORMATION WAS PROVIDED BY THE CITY OF MADISON.**



Toll Free (800) 242-4511  
 Milwaukee Area (414) 239-1181  
 Hearing Impaired (414) 542-4289  
 www.DiggersHotline.com



**Cas4**  
 architecture, ilc  
 3414 Monroe Street  
 Madison, WI 53711  
 ph 608-709-1290

**SMA DESIGN GROUP**  
 SAA Design Group, Inc.  
 101 East Beger Road  
 Madison, WI 53703  
 Fax: 608.253.7750  
 www.saa.com

Project #: 13001.000  
 Project Name:  
**149 East Wilson Street**  
 149 East Wilson Street  
 Madison, WI 53703  
 Owner:  
**McGrath Property Group**  
 222 South Bedford Street, Suite A  
 Madison, WI 53703

**URBAN DESIGN COMMISSION / PLAN COMMISSION SUBMITTAL**  
 SUBMITTED NOVEMBER 6, 2013 FOR:

JANUARY 8, 2014 -- URBAN DESIGN COMMISSION INITIAL/FINAL APPROVAL MEETING  
 JANUARY 13, 2014 -- PLAN COMMISSION MEETING  
 JANUARY 21, 2014 -- COMMON COUNCIL MEETING

AMENDED ARCHITECTURAL PLANS AND ELEVATIONS -- JANUARY 2, 2014  
 AMENDED DRAWINGS TO REFLECT DESIGN ALTERATIONS -- JANUARY 22, 2014

Issued For:	No.:	Description:	Date:

Drawn by: PJH  
 Checked by: SAA Design Group

**Site Grading, Erosion Control and Utility Plan**

**C400**