

Public Informational Meeting

Cottage Grove Road Reconstruction



October 8, 2015

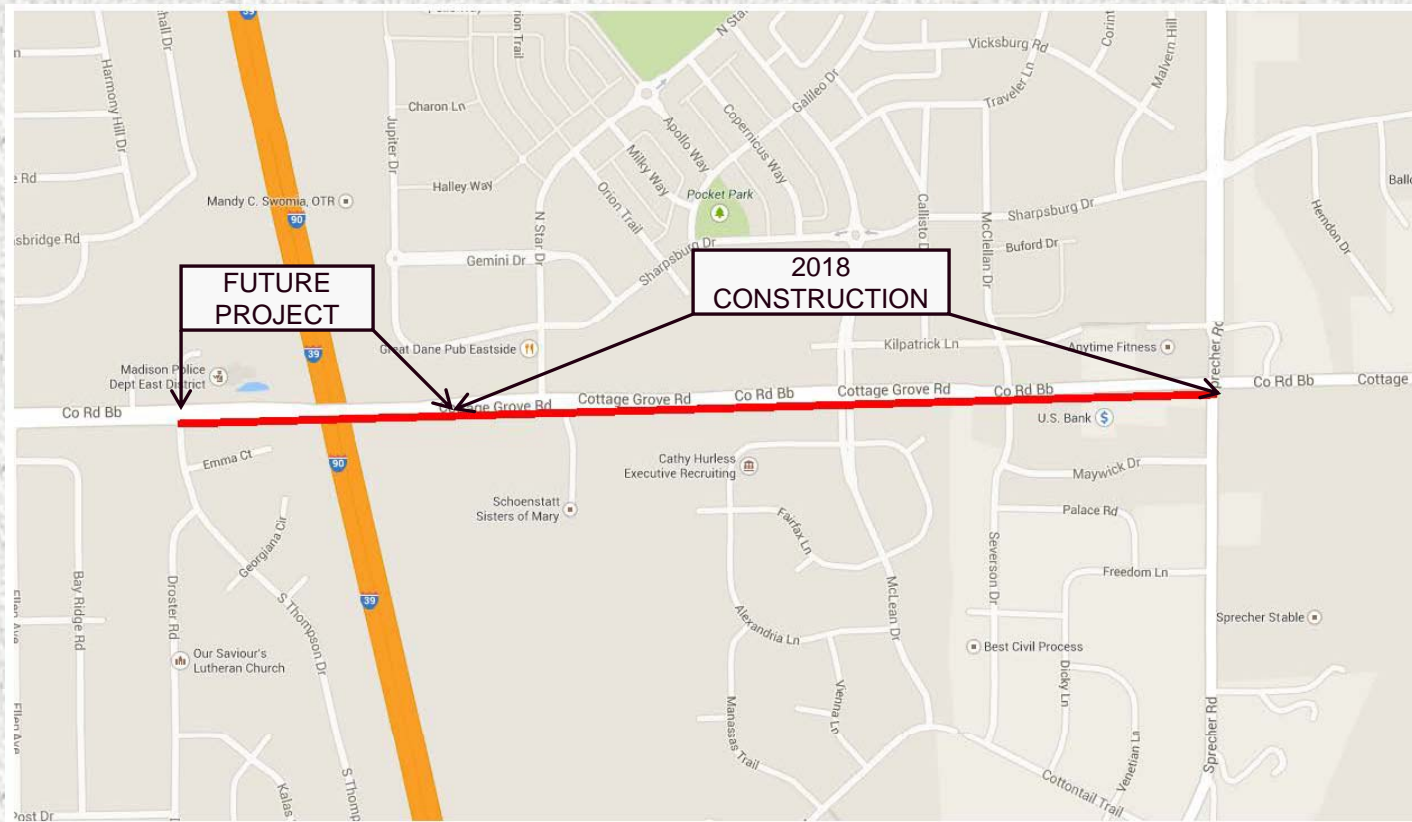


Presentation Outline

- Introduction
- Project Purpose & Need
- Proposed Design Overview
- Environmental Concerns
- Pedestrian Needs
- Project Funding
- Questions/Comments



Project Location



Project Purpose & Need

- Replace deteriorating asphalt pavement
- Reduce traffic congestion and improve safety at intersections
- Construct sidewalk in areas where it currently does not exist
- Provide continuous bike lanes throughout project limits
- Address storm water control and treatment issues

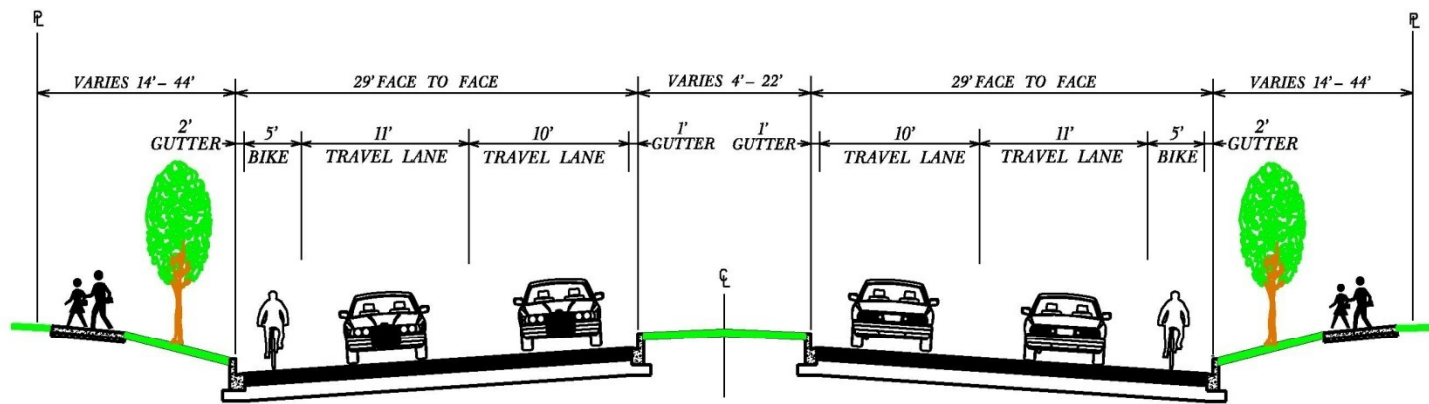


Design Overview

- Provide two through lanes and on-street bike lanes in each direction throughout project limits
- Add turn lanes for improved safety at intersections
- New Storm Sewer and Water Main
- Sidewalk Construction and Repair as necessary
- Update Signals & Add Street Lighting as necessary



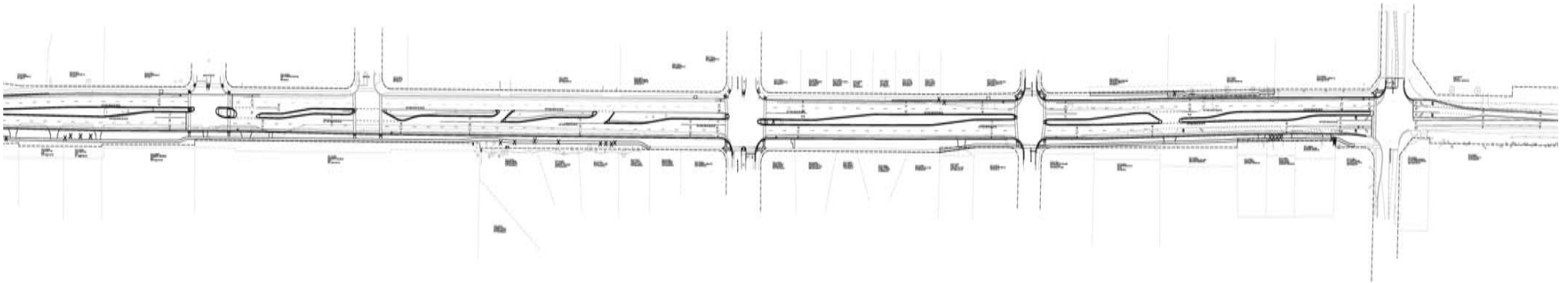
COTTAGE GROVE ROAD – TYPICAL SECTION



TYPICAL FINISHED SECTION



Phase One - 2018 Construction

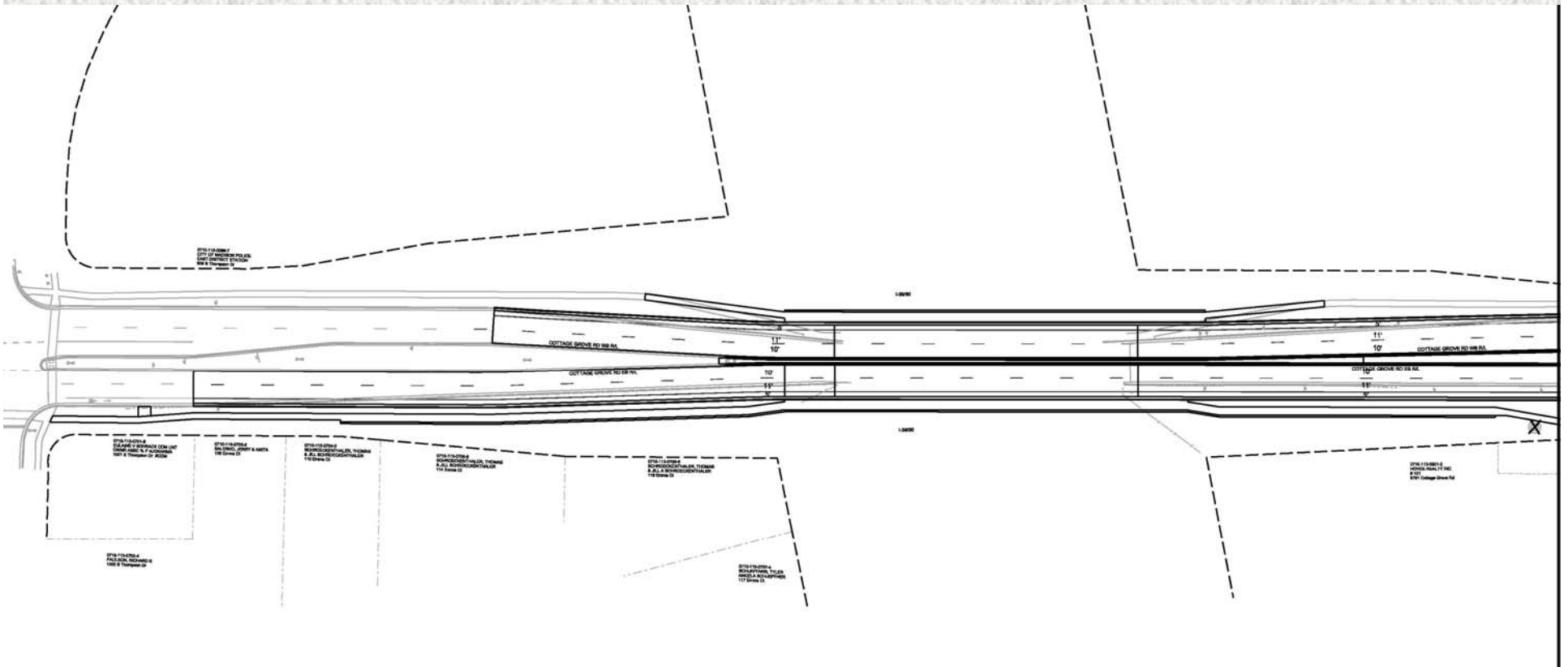


Phase One limits are from approximately 350 feet east of I-39/90 to Sprecher Road



City of Madison Engineering

Phase Two – Interstate Bridge Replacement



Overpass Design Will Depend on the Outcome of WisDOT Interstate Corridor Study



City of Madison Engineering

Environmental Concerns

- Erosion

- New curb and gutter will help prevent roadside slope erosion

- Storm Water

- Treatment swales and a storm water retention pond will be constructed with project

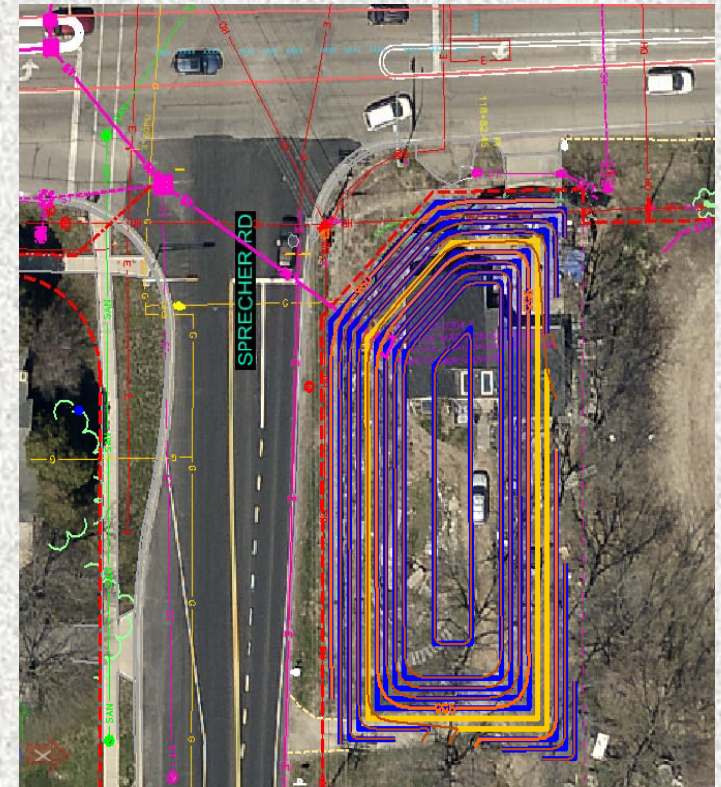


Storm Water Management Improvements

Conventional curbs with inlets directed to site swales



Storm Water Retention Pond



- Construct New Storm Sewer System Throughout Project Limits
- Designed for 10-Year Storm Event
- Construct Storm Water Treatment Swales in Areas With New Curb and Gutter
- Construct Storm Water Retention Pond in Southeast Quadrant of Cottage Grove Rd / Sprecher Rd Intersection



Street Trees

- Approximately 25 trees and shrubs will need to be removed for construction of the project
- Efforts will continue to be made to minimize tree removals
- Trees will be replanted in terrace areas at the completion of the project



Pedestrian Needs:



- Add Missing Sidewalk on Both Sides of Cottage Grove Road



Street Lighting Upgrades



Continue KIM Street Lighting Fixtures in Medians to Match Developed Areas



2018 Construction

- Start Construction – Spring of 2018
- Complete by Mid-Summer of 2018
- Utility Relocations Summer 2017
- Traffic maintained during construction, one lane in each direction
- Keep access to businesses at all times
- Keep access to all homes except when driveway is being poured. Alternate parking area will be provided when access cannot be maintained.



Project Funding & Assessment Policy

The project is funded by Federal and Local Sources

- Estimated Project Costs:
 - Roadway Items \$5.5 Million (50% Federal/50% Local)
 - Local share is further divided between City of Madison, Dane County and adjacent property owners
 - Water main \$0.5 Million (100% City Funding)
- Total Project Estimate: \$6.0 Million



Project Funding & Assessment Policy

Assessment Policy for Roadway Items:

- Only properties that have vehicular access to Cottage Grove Road are assessed.
- The Local Share of roadway items is divided between the City, Dane County and Adjacent Property Owners per City Assessment Policy
- For unimproved streets the adjacent property is assessed for the Local Share of costs for construction of curb & gutter, 4-Feet of pavement width, drive aprons, sidewalk, private storm sewer and street lighting.

A Typical Assessment for roadway items for a property with 60 feet of frontage on Cottage Grove Road would be approximately \$3000

Assessment Policy for Local Utilities: (Water Main)

- Funding for Local Utilities is 100% by Local Sources
- No Sanitary Sewer Work is planned for this project
- Water Main is funded 100% by City



What's next?

- **2016**

- Complete Environmental Documents
- Complete WisDOT Project Approvals
- Prepare Right of Way Plat

- **2017**

- Complete Plans
- Prepare Bid Documents
- Final Plans Due August 2017
- Private Utility Relocations and Construction
- Right of Way Acquisitions

- **Spring and Summer 2018**

- Roadway Construction (Phase 1)
 - Anticipated to begin in Spring of 2018
 - Expected Completion by end of August, 2018



More Information

- Project Website
 - <http://www.cityofmadison.com/engineering/projects/cottage-grove-road>
 - provide comments in “contact us” button
- Subscribe to MyAccount email list to receive project updates
 - <https://my.cityofmadison.com/>
 - This project located under heading “Transportation Projects”



Questions or Comments

Please Complete and Return the Comment Form

By October 30, 2015

Project Contacts:

Glen Yoerger P.E.
City of Madison Engineering
261-9177
gyoerger@cityofmadison.com

Scott Langer P.E.
City Traffic Engineering
266-5987
slanger@cityofmadison.com

