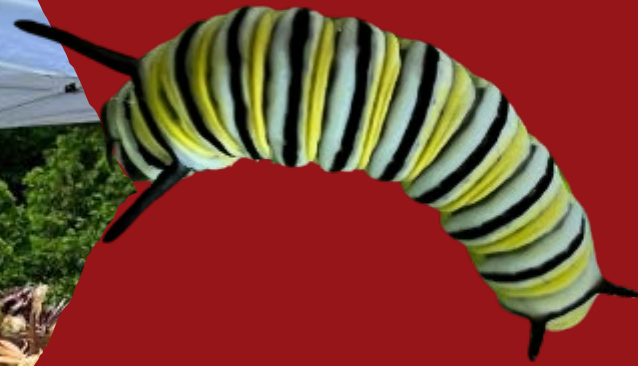


Olbrich Botanical Garden



July 2022

Park Commission Meeting



Capital Campaign



Completion

SUMMARY

- The City of Madison Parks Division and Olbrich Botanical Society agreed to jointly fund the construction of a Learning Center and new production greenhouses.
- A 50/50 funding split was agreed upon.
- The project originally was \$10 million, and grew to \$12 million when upgrades needed to be made to the foundation (helical piers), storm water management needed to be improved (the cistern), and the entire facility (except the Bolz Conservatory) needed to be retrofitted with sprinklers.

TIMELINE

- 2010-2014 – Facilities master plan, public meetings, fundraising feasibility study, commitment from Mayor Soglin, commitment from OBS Board of Directors
- 2015-2017 – Design development
- 2015-2017 – Silent fundraising phase
- 2017-2019 – Public fundraising phase
- 2018-2020 - Construction

Capital Project Summary

Original Commitment	Cost
City - Cash Contribution	\$6,000,000
Society - Cash Contribution	\$6,000,000
FINAL CASH CONTRIBUTIONS	\$12,000,000

Additional Expenses	Cost
City - Items & Services throughout the Project	\$398,712*
Society - Items & Services throughout the Project	\$425,208
FINAL CASH CONTRIBUTIONS	\$823,920

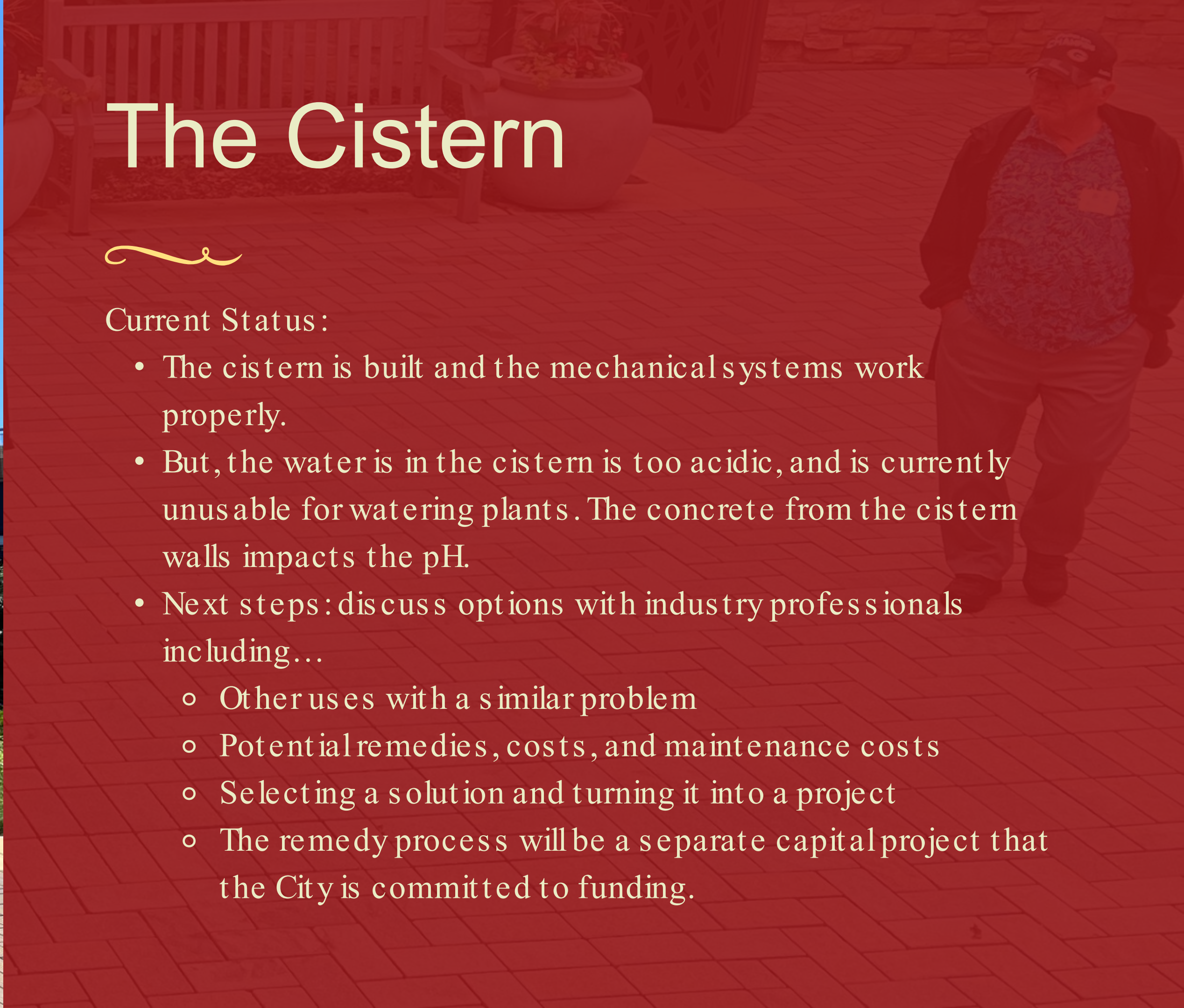
*Punch list items yet to be completed: greenhouse bulbs, mag lock on smoke detectors, weather stripping, painting, etc.

The Cistern



Current Status:

- The cistern is built and the mechanical systems work properly.
- But, the water in the cistern is too acidic, and is currently unusable for watering plants. The concrete from the cistern walls impacts the pH.
- Next steps: discuss options with industry professionals including...
 - Other uses with a similar problem
 - Potential remedies, costs, and maintenance costs
 - Selecting a solution and turning it into a project
 - The remedy process will be a separate capital project that the City is committed to funding.



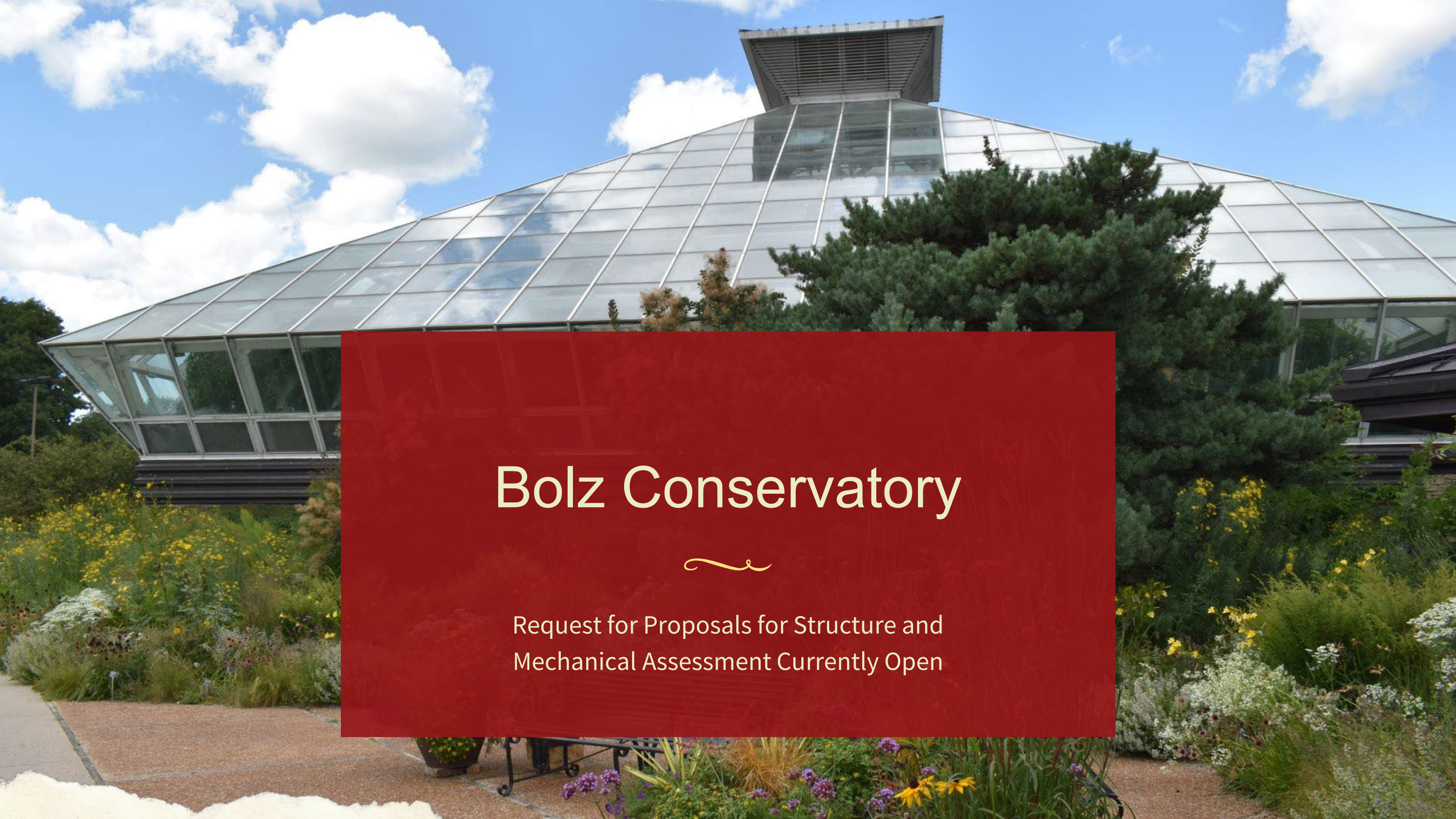


Thank You!



Special thanks to the many staff who provided thousands of in-kind hours not reflected in the final project budget/expenditures:

- Roberta Sladky, Retired Olbrich Gardens Director
- Randy Wiesner, City of Madison Engineering
- Olbrich staff, including Jeff Epping, Colten Blackburn, Don Saunders, Jim Maier, Clayton Janikowski, Joe Vande Slunt, Jane Nicholson, Kim North, and so many more
- Mayor Paul Soglin & Mayor Satya Rhodes-Conway
- Parks Superintendent Eric Knepp
- Parks Assistant Superintendent Lisa Laschinger
- Olbrich Botanical Society & Foundation Board of Directors
- Capital Campaign Chair Tim Sherry
- Dick Wagner
- Olbrich Botanical Foundation
- Park Commission



Bolz Conservatory



Request for Proposals for Structure and
Mechanical Assessment Currently Open



Strategic Planning Firm Selected

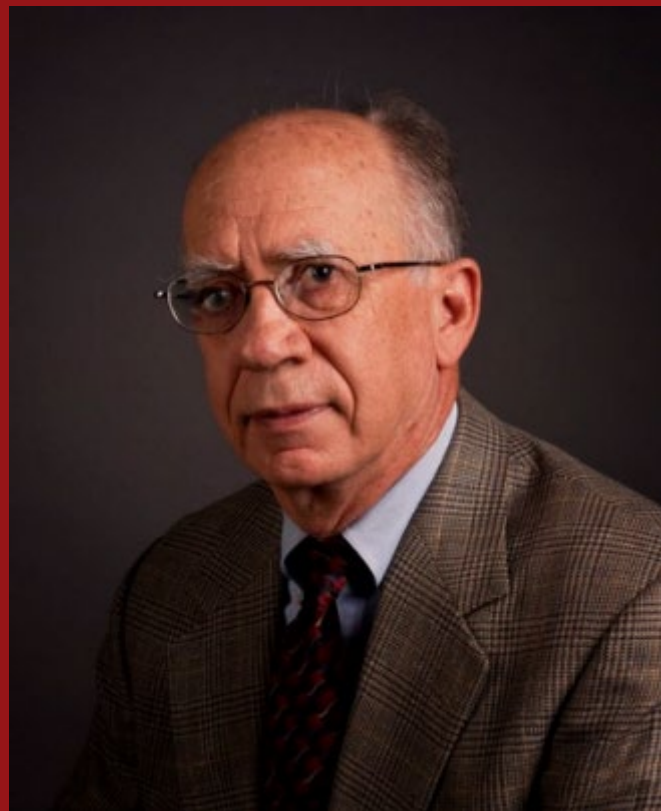


EMD Consulting with
Findorff & The
People Company

Why were they selected?

- Experience leading a botanic garden
- Long history consulting with botanic gardens and many public/private partnership gardens
- Proven track record in leading botanic gardens to the next level.
- Local experts on board to seek and receive stakeholder and community input.
- Local DEI expert to provide guidance on growing Olbrich's current DEI efforts.

Who are they?



Rick Daley

Founding partner of EMD Consulting Group, former CEO of Denver Botanic Gardens



Tim Prince

Strategic Alignment, Findorff - Over 27 years of experience in strategic planning, operational leadership, & project management



Deborah Biddle

Founder and Chief Consultant of The People Company. Prior experience with Dane County United Way and many others.



Strategic Plan



Final Product

- Updated Mission, Vision, & Core Values
- 3-5 Transformative Goals
- Objectives tied to specific deadlines and staff under each goal
- External plan to use for fundraising and public information
- Detailed internal plan that is paired with a tracking document
- Plan progress reviewed quarterly by staff
- Timeline - August, 2022 - January, 2023

Curb Free Cory Lee

Travel Blogger



❤️ 💬 📍 ... 🏷️

Liked by destinationmadison and 144 others

curbfreecorylee Today, I visited the @olbrichgardens here in Madison, Wisconsin and it was absolutely beautiful, but also really accessible! The botanical gardens are spread across 16 acres and most of the paths throughout the gardens are smooth to roll on. Once we finished seeing all of the outdoor gardens, we went into the Bolz Conservatory. The conservatory has exotic plants, birds, orchids, and a waterfall.

The outdoor gardens are completely free to visit, which is awesome, and admission into the Bolz Conservatory is just \$6 per adult. And if you need a wheelchair or scooter during your visit, they are available for free on a first-come, first-served basis.

Where is the best botanical garden you've ever visited?
🌺🌹🌸🌻

@destinationmadison #destinationmadison
#madisonwi #madisonwisconsin #travelwisconsin
#olbrichbotanicalgardens #olbrichgardens
#accessibletravel #wheelchairtravel
#accessibletourism #wheelchairlife #wheelchairuser

20 hours ago



Gib's Bar



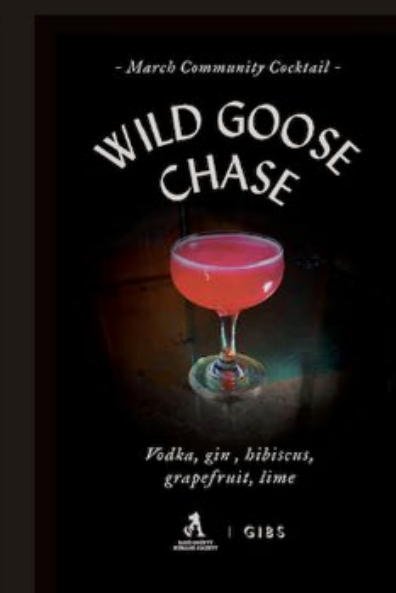
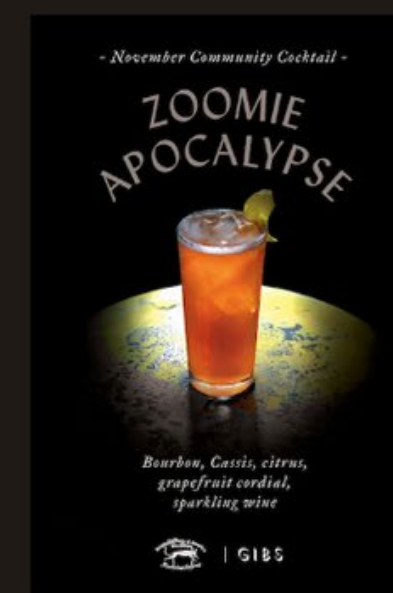
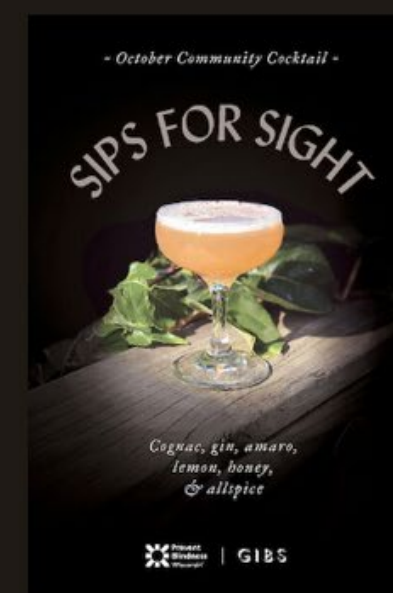
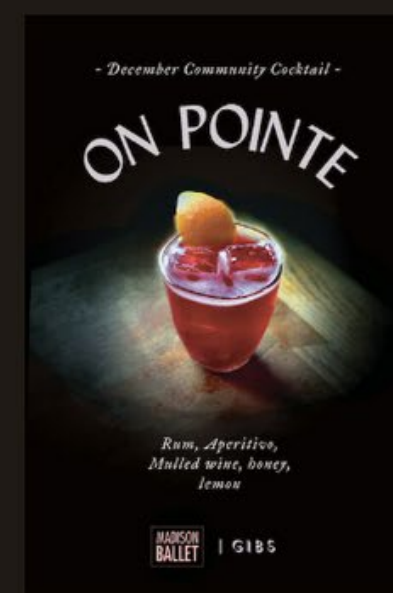
- Davids on Plum infused vodka (plums from the Bolz Conservatory)
- Toasted fig leaf syrup (fig leaves from the Herb Garden)
- Plum liqueur
- Tepache
- Lime

\$2.00 of every drink sold benefits OBS

COMMUNITY COCKTAILS

Each month, Gib's features a rotating Community Cocktail that helps give back to the Madison area. Partner with Gib's and we'll create a unique cocktail with your organization in mind and donate a portion of sales to your cause. This our way of doing good in the community.

PARTNER WITH US →



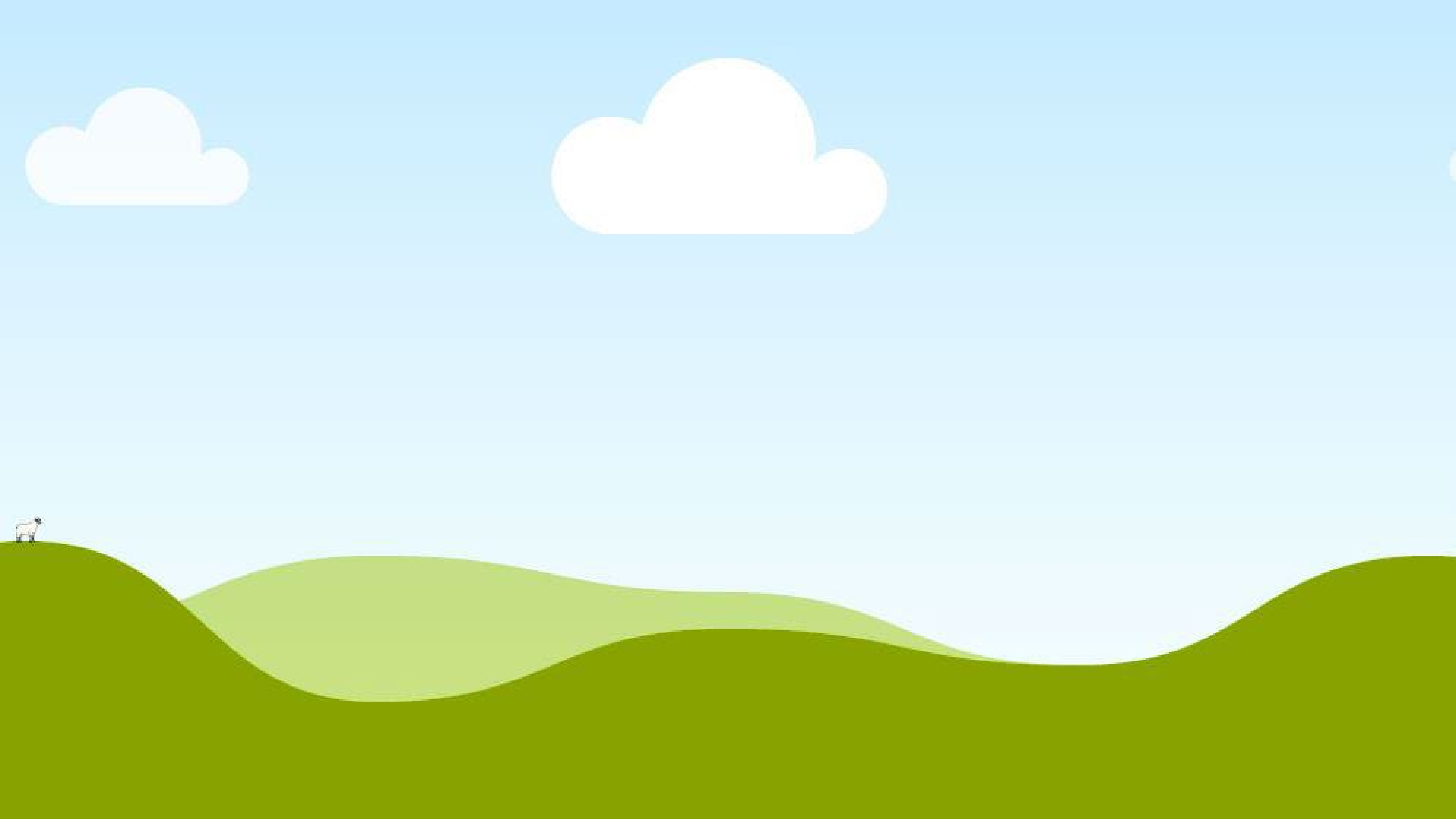
State Streeting Plantings



Blooming Butterflies

July 14 - August 7, 2022





Story Walk

"Flowers are Calling"



- Stroll the gardens and read the book
- Books and companion plants given to area Little Free Libraries





Thank you!

