

ARCHITECTURE
ENGINEERING
INTERIOR DESIGN



PHYSICAL PLANT
SHOPS/OFFICE BUILDING

30 N. MILL ST

9-16-09



STRANG

**ARCHITECTURE
ENGINEERING
INTERIOR DESIGN**

STRANG, INC.
6411 MINERAL POINT ROAD
MADISON, WI 53705-4395

DRAWING SET BP#1
COPYRIGHT STRANG, INC. 10/02/09
FILE NAME

REVISIONS

DRAWN
CHECKED
DATE 9/16/2009 6:59:10 PM
PROJECT NO. 2009060 (DSF# 0902U)
PROJECT TITLE

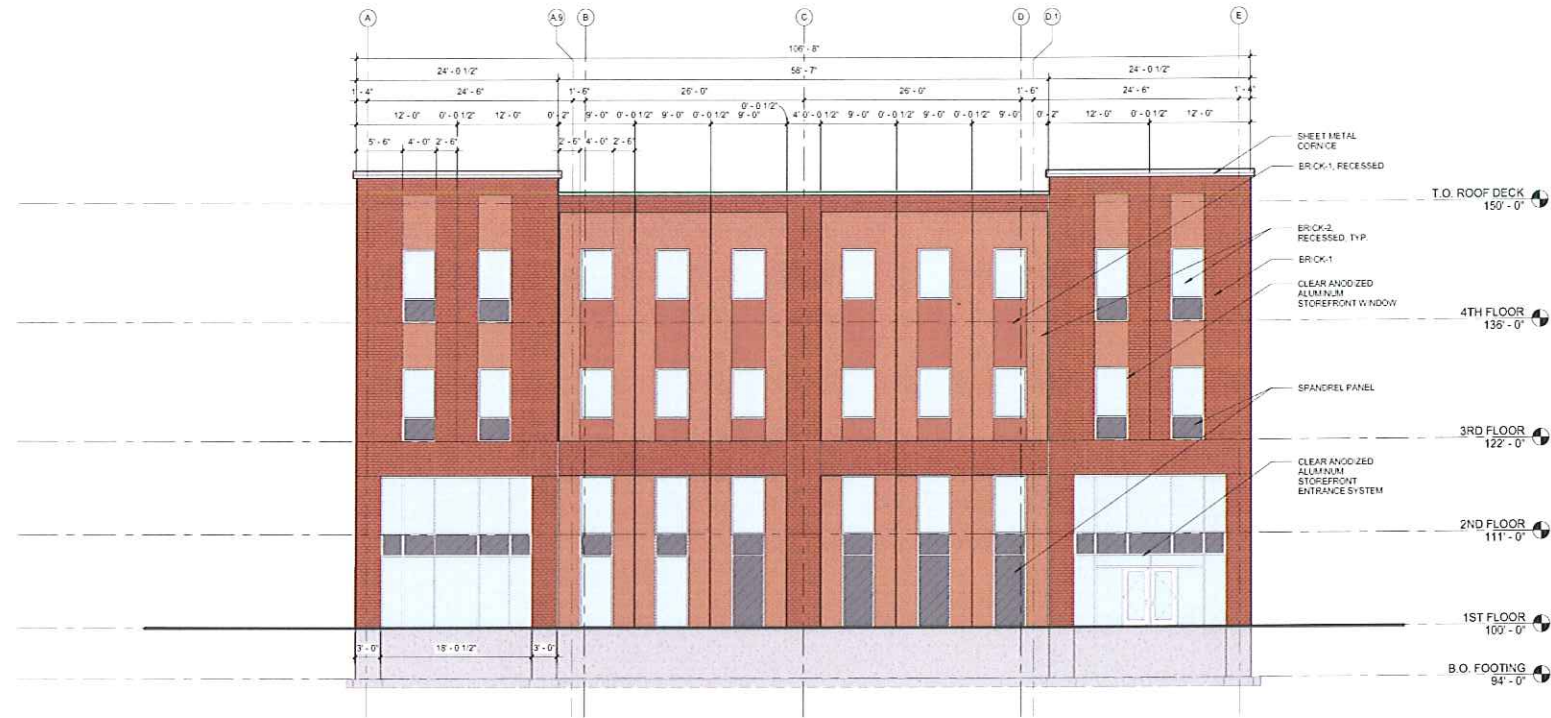
**PHYSICAL PLANT
SHOPS/OFFICE
BUILDING**

30 N. MILLS STREET
MADISON, WISCONSIN

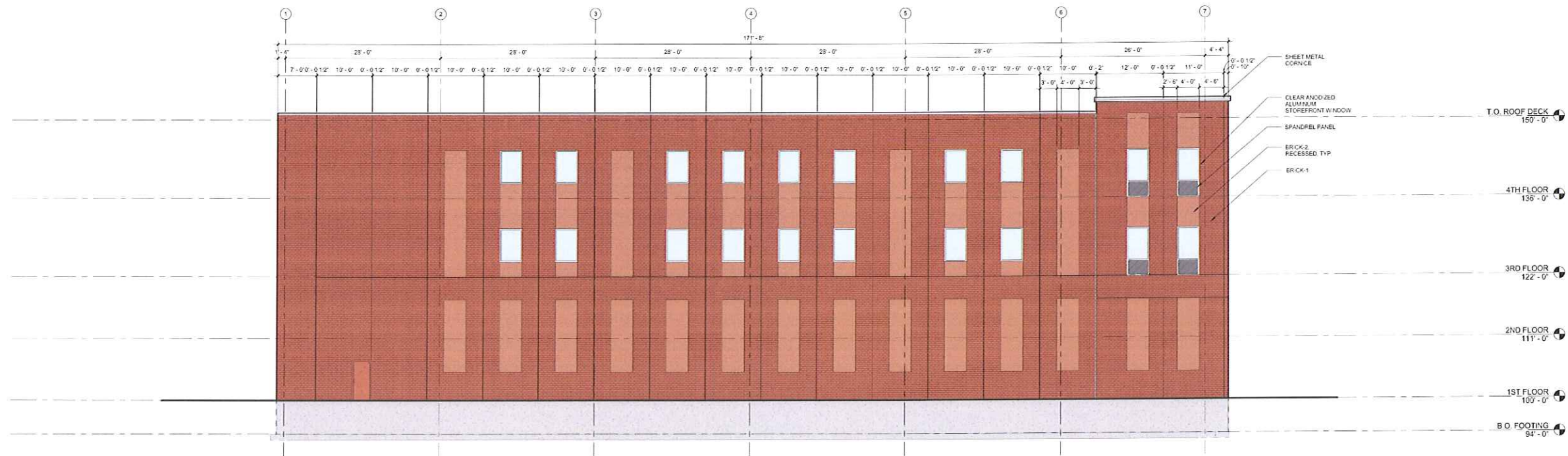
SHEET NAME
**EXTERIOR
ELEVATIONS**

SHEET NO.

A401



1 EAST ELEVATION
A401 1/8" = 1'-0"

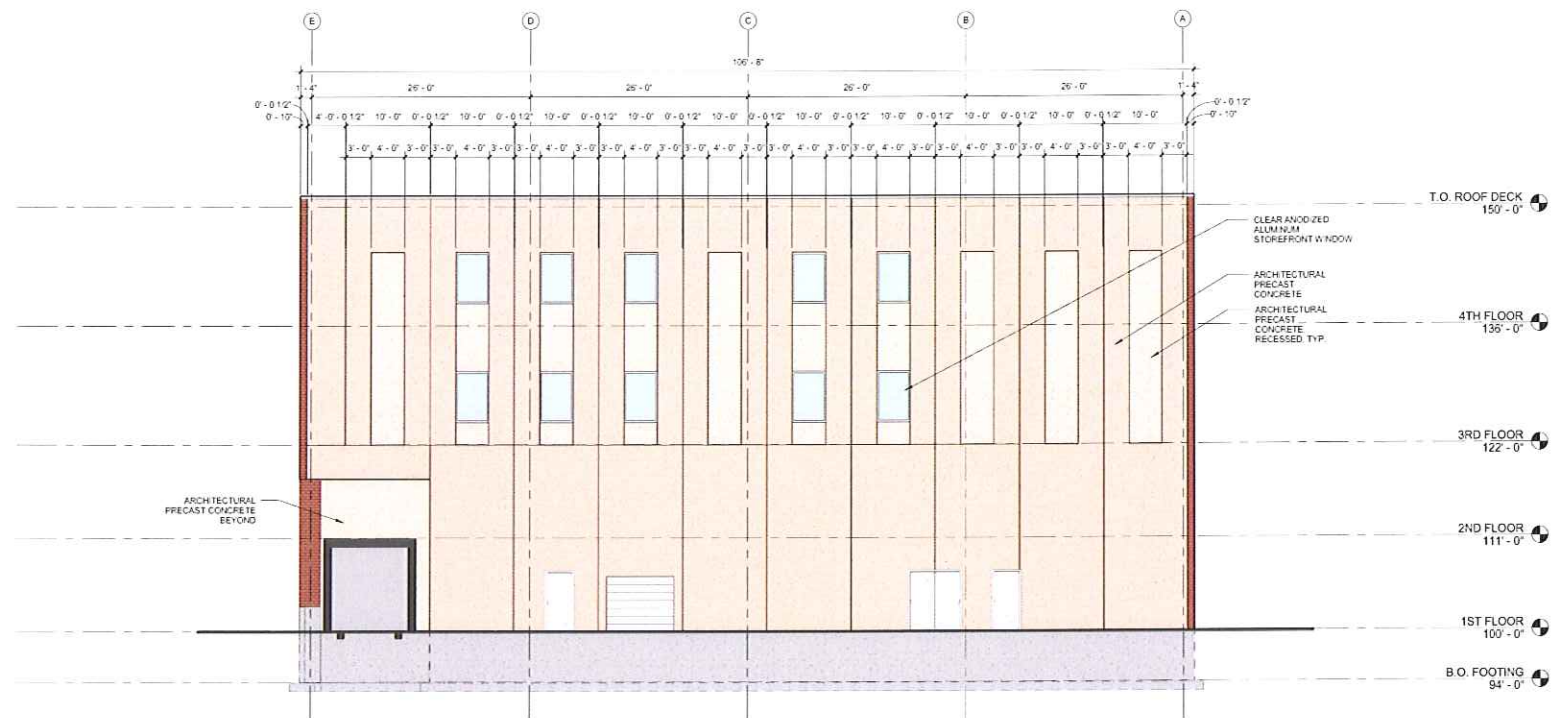


2 SOUTH ELEVATION
A401 1/8" = 1'-0"



**ARCHITECTURE
ENGINEERING
INTERIOR DESIGN**

STRANG, INC.
6411 MINERAL POINT ROAD
MADISON, WI 53705-4395



2 WEST ELEVATION
A402 1/8" = 1'-0"



1 NORTH ELEVATION
A402 1/8" = 1'-0"

DRAWING SET BP#1
COPYRIGHT STRANG, INC. 10/02/09
FILE NAME

REVISIONS

DRAWN
CHECKED
DATE 9/16/2009 7:03:13 PM
PROJECT NO. 2009060 (DSF# 0902U)

PROJECT TITLE
**PHYSICAL PLANT
SHOPS/OFFICE
BUILDING**

30 N. MILLS STREET
MADISON, WISCONSIN

SHEET NAME
**EXTERIOR
ELEVATIONS**

SHEET NO.
A402