

MADISON PUBLIC MARKET

Alternative Site Location Information Appendix B



Prepared by:

City of Madison

Department of Planning & Community
& Economic Development

Planning Division

May 2010



Government East Parking Ramp

215 South Pinckney Street

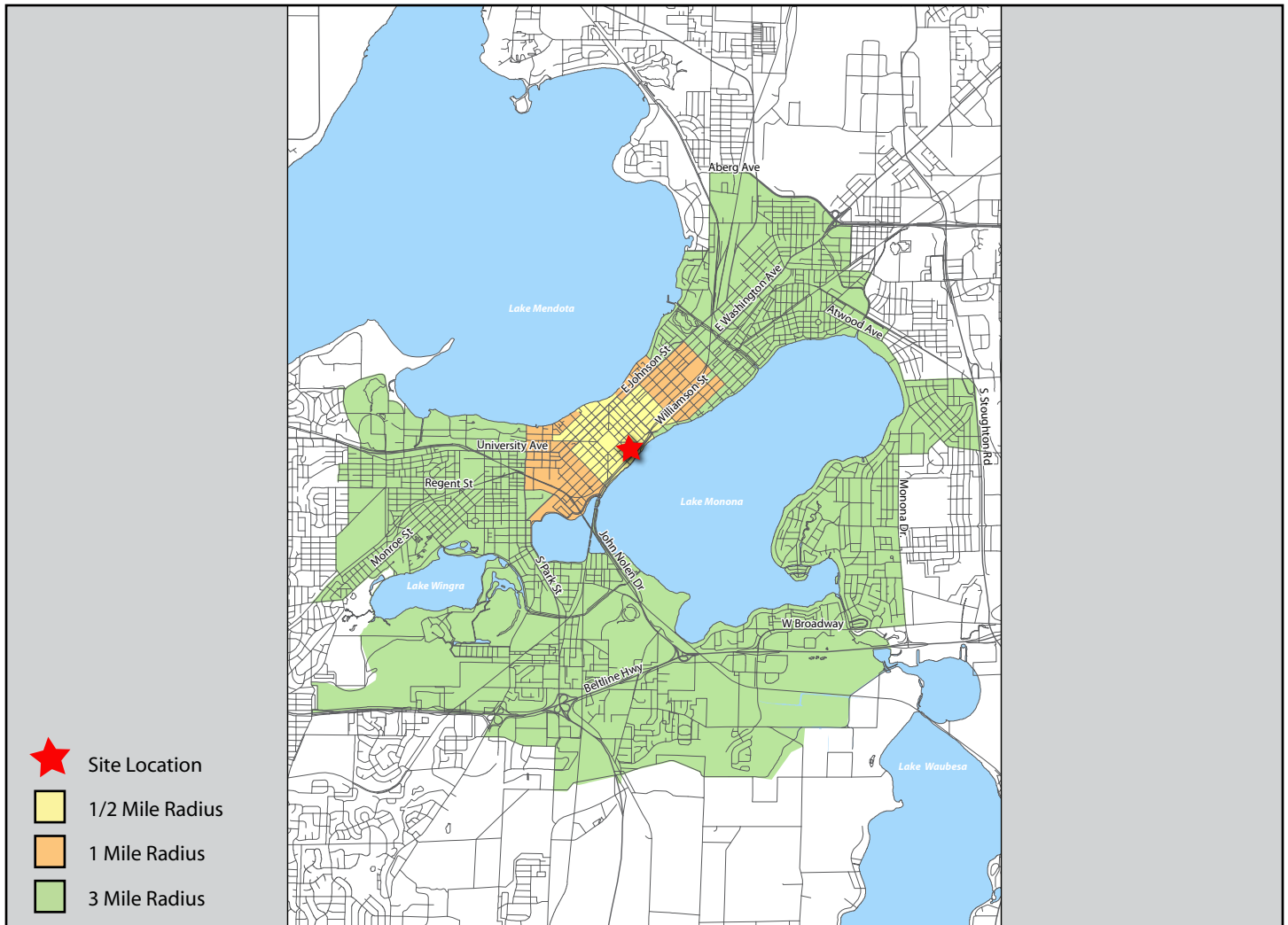
Owner: City Of Madison Parking Utility

Site Size: 52,272 Square Feet - 1.2 Acres

Zoning: C4

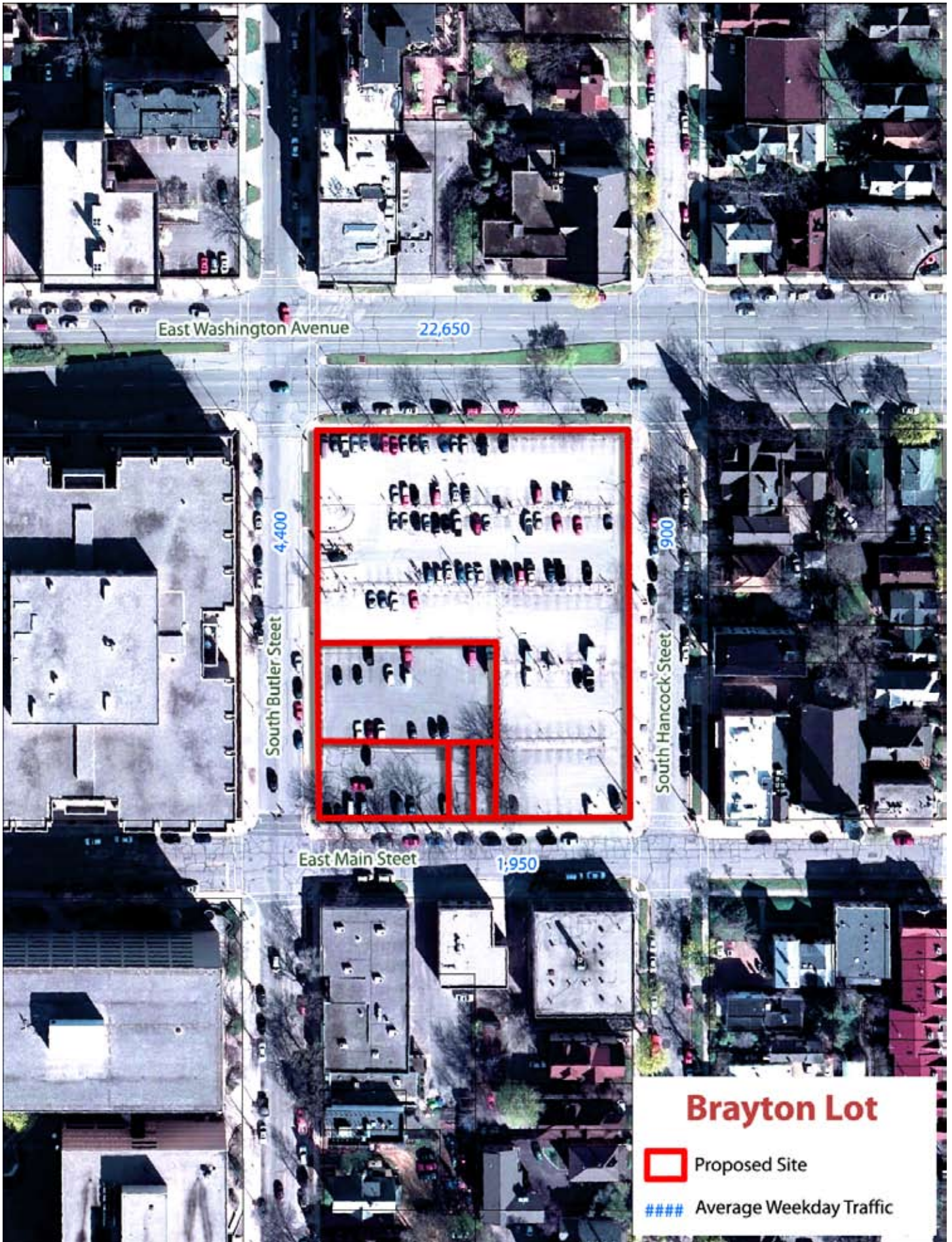
Aldermanic District: #6

Neighborhood: Capitol Neighborhoods - First Settlement District



Population	Households	Total Companies	Retail Jobs	Service Jobs	Other Jobs	Total Jobs	Total Workers	Individuals Below Poverty Level
9,195	4,680	1,594	2,275	23,002	995	25,272	6,290	2,134
26,560	12,292	2,350	4,678	30,934	2,085	37,697	17,640	6,064
92,259	41,787	5,393	10,438	76,872	15,851	102,891	58,331	13,248

Data acquired from the City of Madison and from Traffic Analysis Zones created by the Madison Area Metropolitan Planning Office - Traffic Analysis Zone data collected from the 2000 United States Census and from infoUSA, 2007.



Brayton Lot

1-21 South Butler Street & 302-314 East Main Street

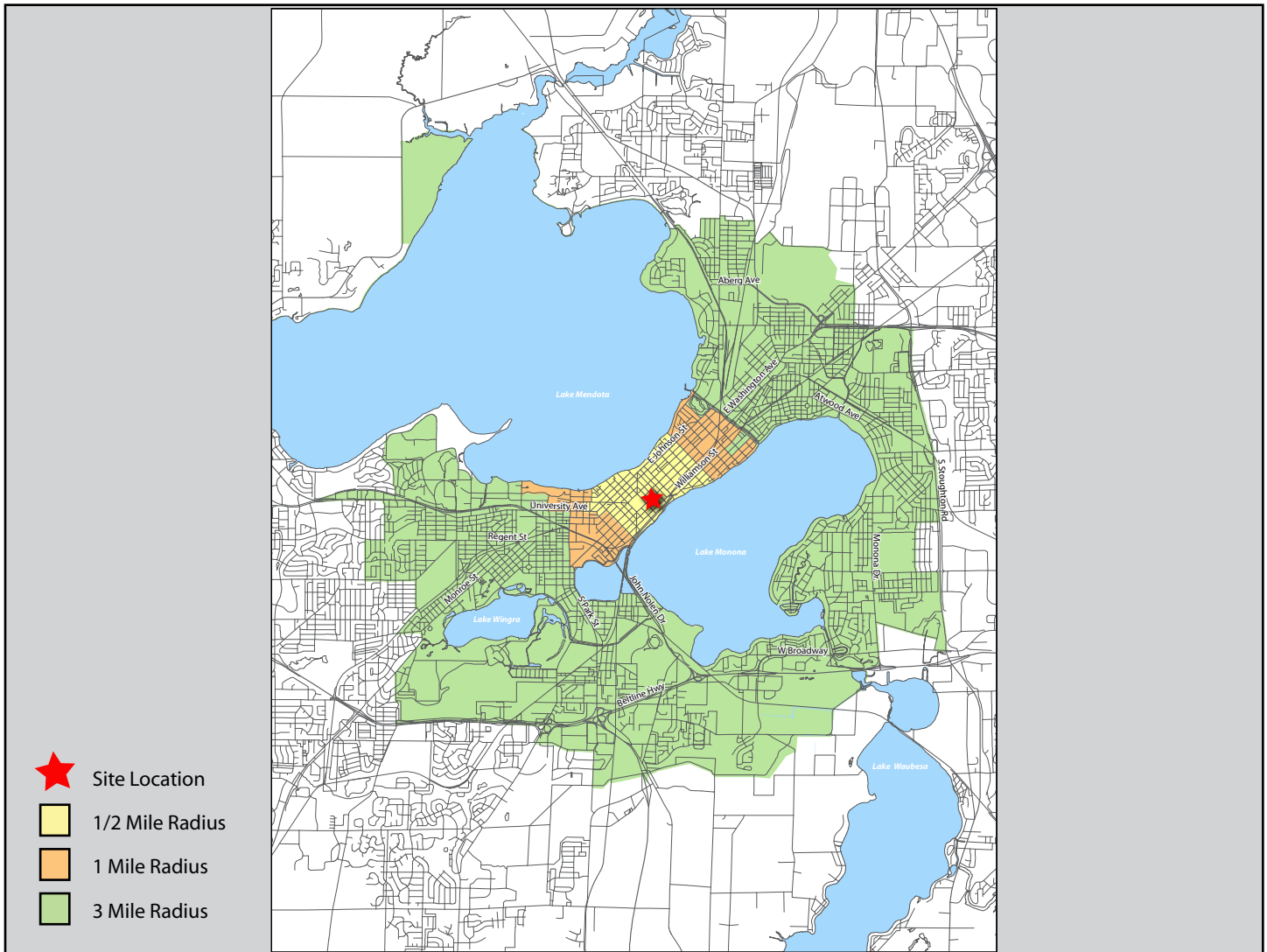
Owner: City Of Madison and State of Wisconsin

Site Size: 86,922 Square Feet - 1.995 Acres

Zoning: C2

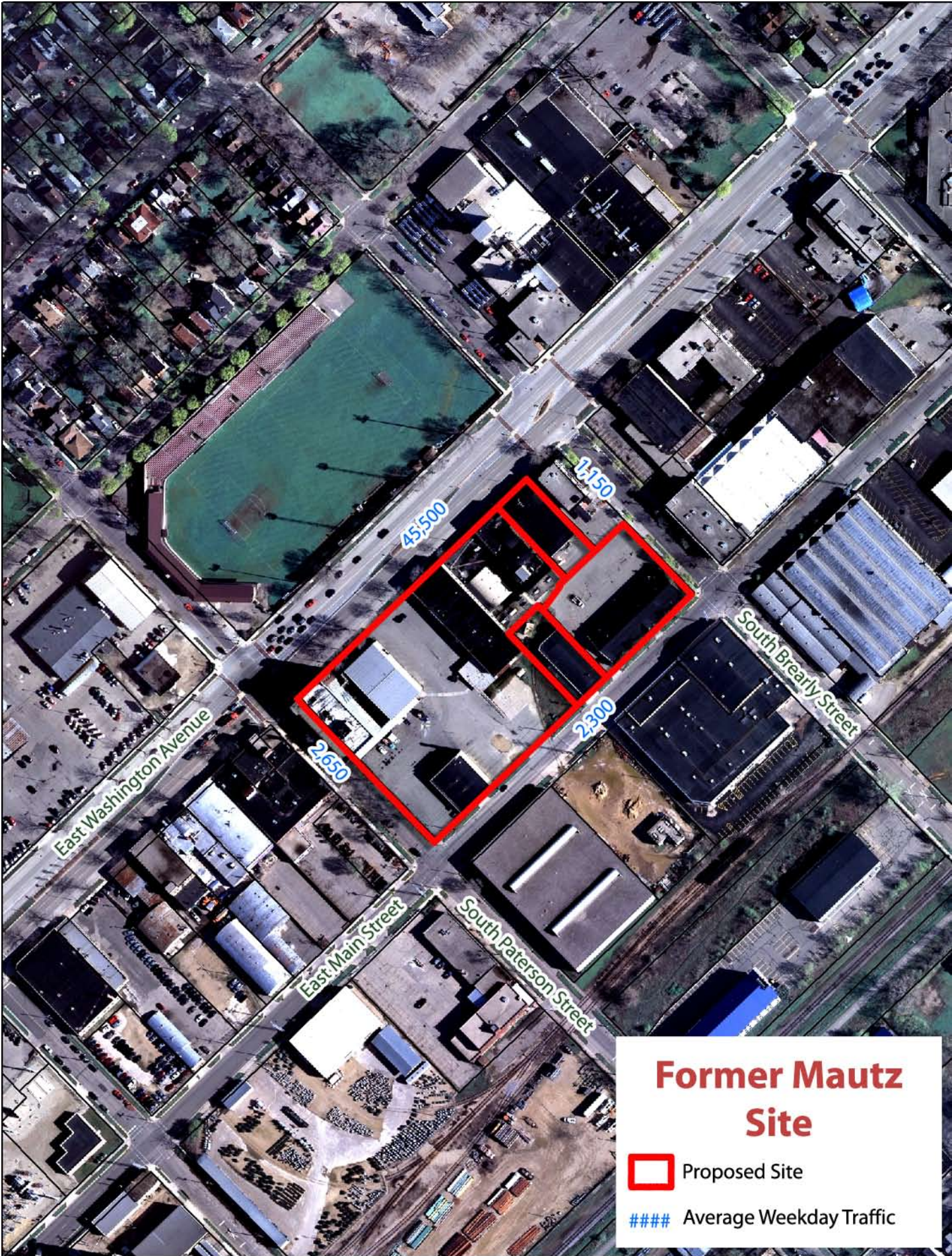
Aldermanic District: #6

Neighborhood: Capitol Neighborhoods - First Settlement District



Population	Households	Total Companies	Retail Jobs	Service Jobs	Other Jobs	Total Jobs	Total Workers	Individuals Below Poverty Level
16,740	7,925	1,989	3,594	23,553	1,383	28,530	11,220	3,097
34,870	16,145	2,602	4,981	36,150	2,339	43,530	21,891	6,590
112,454	50,862	6,099	12,296	82,138	17,370	111,804	69,666	15,349

Data acquired from the City of Madison and from Traffic Analysis Zones created by the Madison Area Metropolitan Planning Office - Traffic Analysis Zone data collected from the 2000 United States Census and from infoUSA, 2007.



Former Mautz Site

925 & 945 East Washington Avenue, and 924 & 946 East Main Street

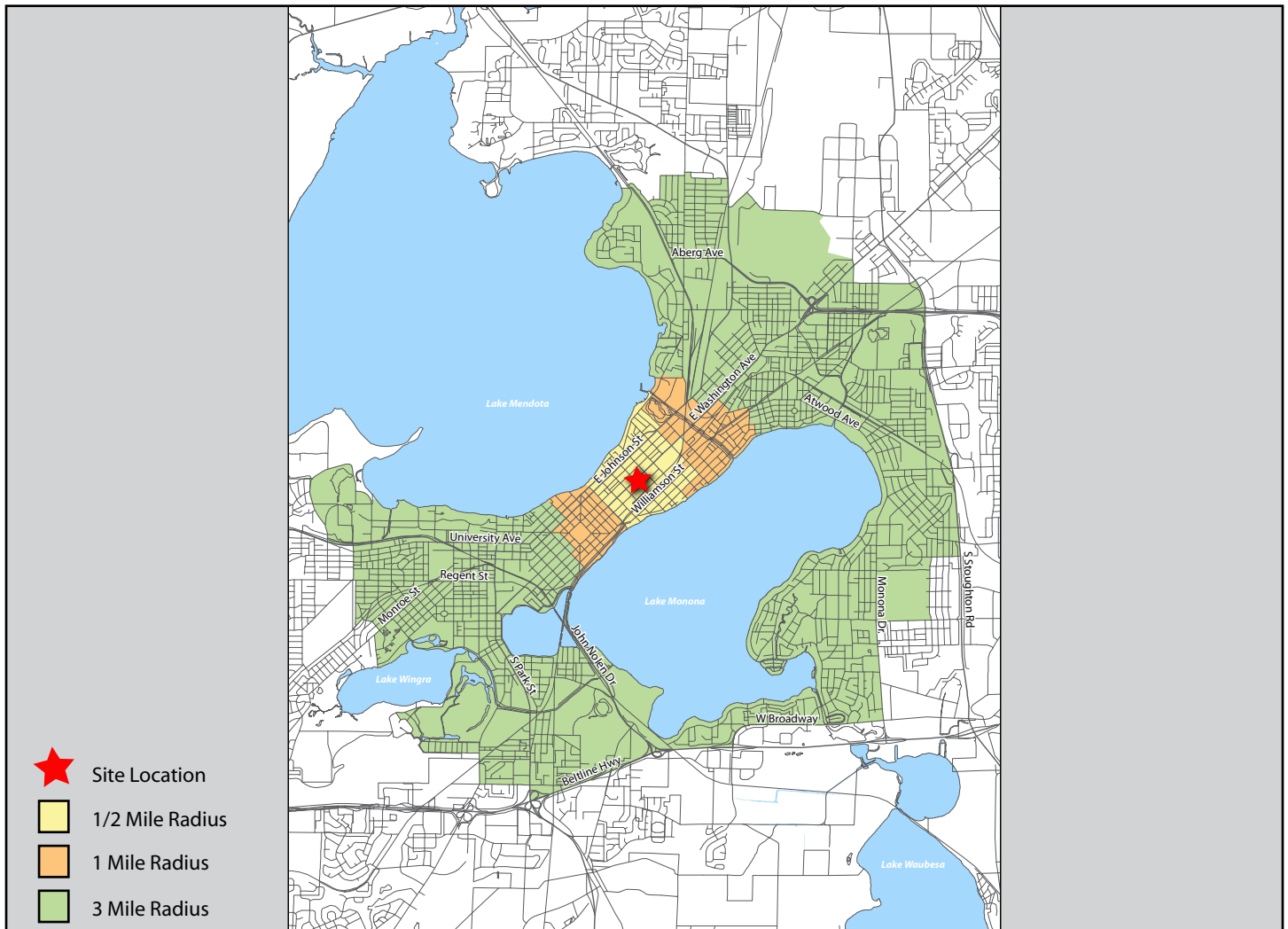
Owners: Archipelago Village, LLC and 945 East Washington Avenue, LLC

Site Size: 185,130 Square Feet - 4.5 Acres

Zoning: M1

Aldermanic District: #6

Neighborhood: Marquette/Capitol Gateway Corridor



Population	Households	Total Companies	Retail Jobs	Service Jobs	Other Jobs	Total Jobs	Total Workers	Individuals Below Poverty Level
5,475	2,775	335	776	2,244	1,234	4,254	4,100	785
15,625	8,055	1,832	2,474	20,964	2,155	25,593	11,680	2,398
93,124	42,603	5,025	9,687	73,088	12,108	94,833	58,181	12,923

Data acquired from the City of Madison and from Traffic Analysis Zones created by the Madison Area Metropolitan Planning Office - Traffic Analysis Zone data collected from the 2000 United States Census and from infoUSA, 2007.



Union Corners

2340, 2504 and 2507 Winnebago Street

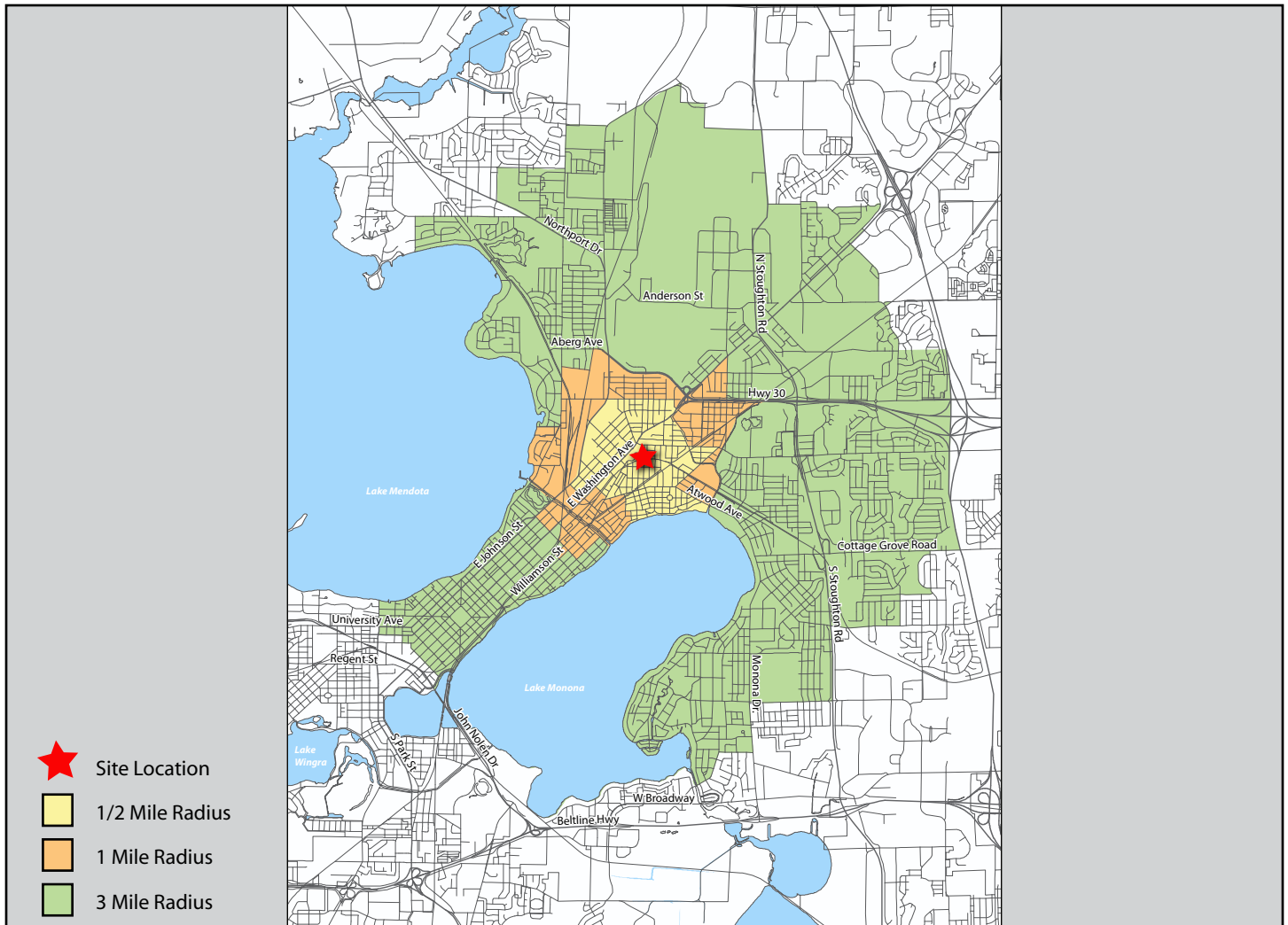
Owner: Union Corners, LLC

Site Size: 497,191 Square Feet - 11.4 Acres

Zoning: PUD(GDP)

Aldermanic District: #6

Neighborhood: Schenk - Atwood - Starkweather - Yahara



Population	Households	Total Companies	Retail Jobs	Service Jobs	Other Jobs	Total Jobs	Total Workers	Individuals Below Poverty Level
8,285	4,165	312	553	1,278	1,077	2,908	5,620	563
17,185	8,530	723	1,346	3,551	5,460	10,357	11,691	1,286
84,100	38,969	4,831	12,003	45,664	13,587	71,024	53,756	9,712

Data acquired from the City of Madison and from Traffic Analysis Zones created by the Madison Area Metropolitan Planning Office - Traffic Analysis Zone data collected from the 2000 United States Census and from infoUSA, 2007.