

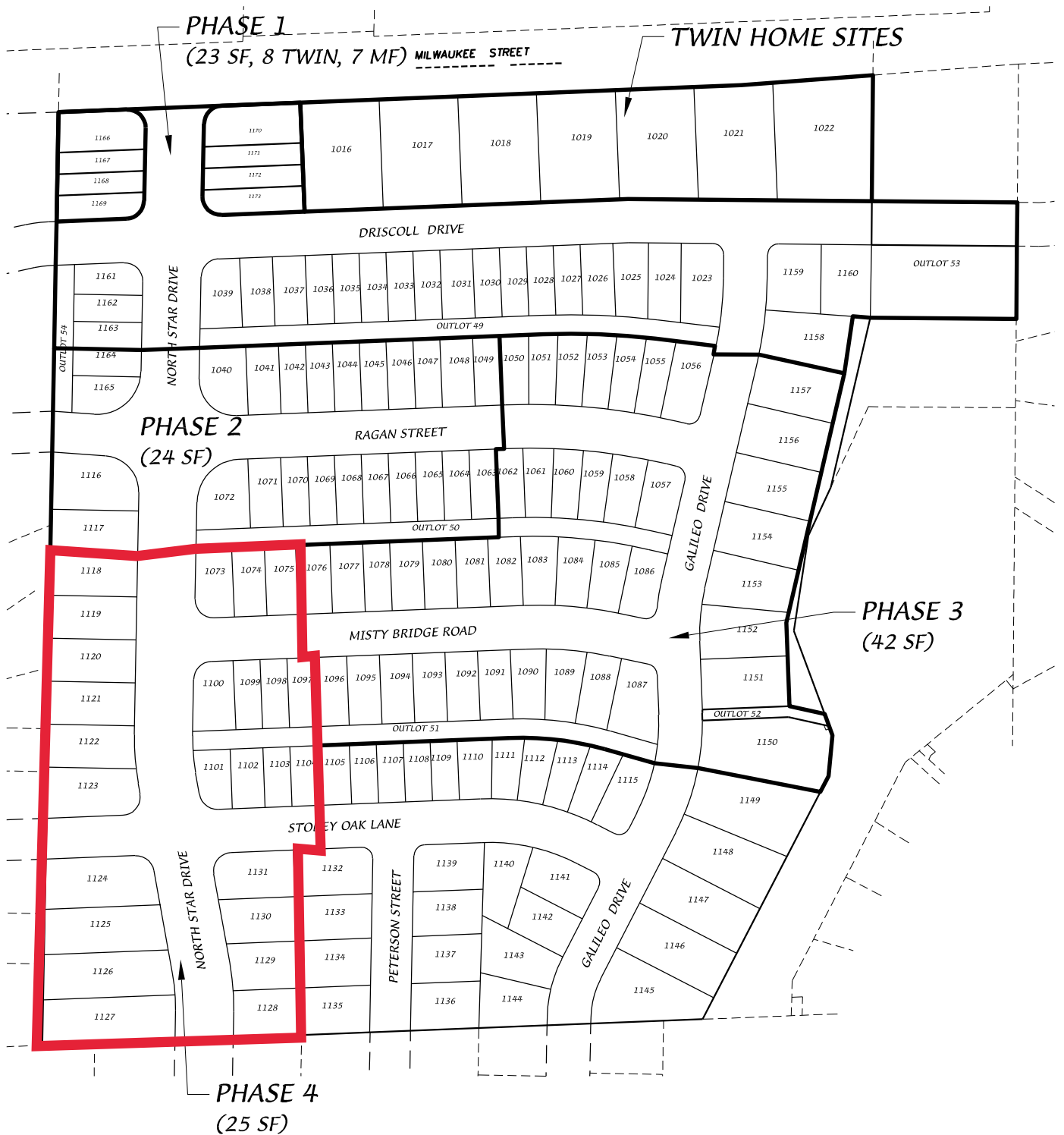
Northeast Addition to Grandview Commons Phase 4 Surface Paving

Contract: 8975, Project: 13302

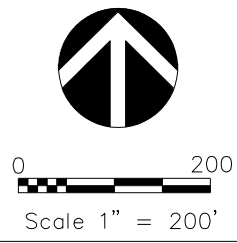
Location Map



Grandview Commons Northeast Addition - Phase Map



D'ONOFRIO KOTTKE AND ASSOCIATES, INC.
 7530 Westward Way, Madison, WI 53717
 Phone: 608.833.7530 • Fax: 608.833.1089
 YOUR NATURAL RESOURCE FOR LAND DEVELOPMENT



DATE: 08-31-20
 F.N.: 19-05-144
 REV.

DRAWN BY:
 U: /USER/1707115/DRAWINGS/PHASE MAP.DWG

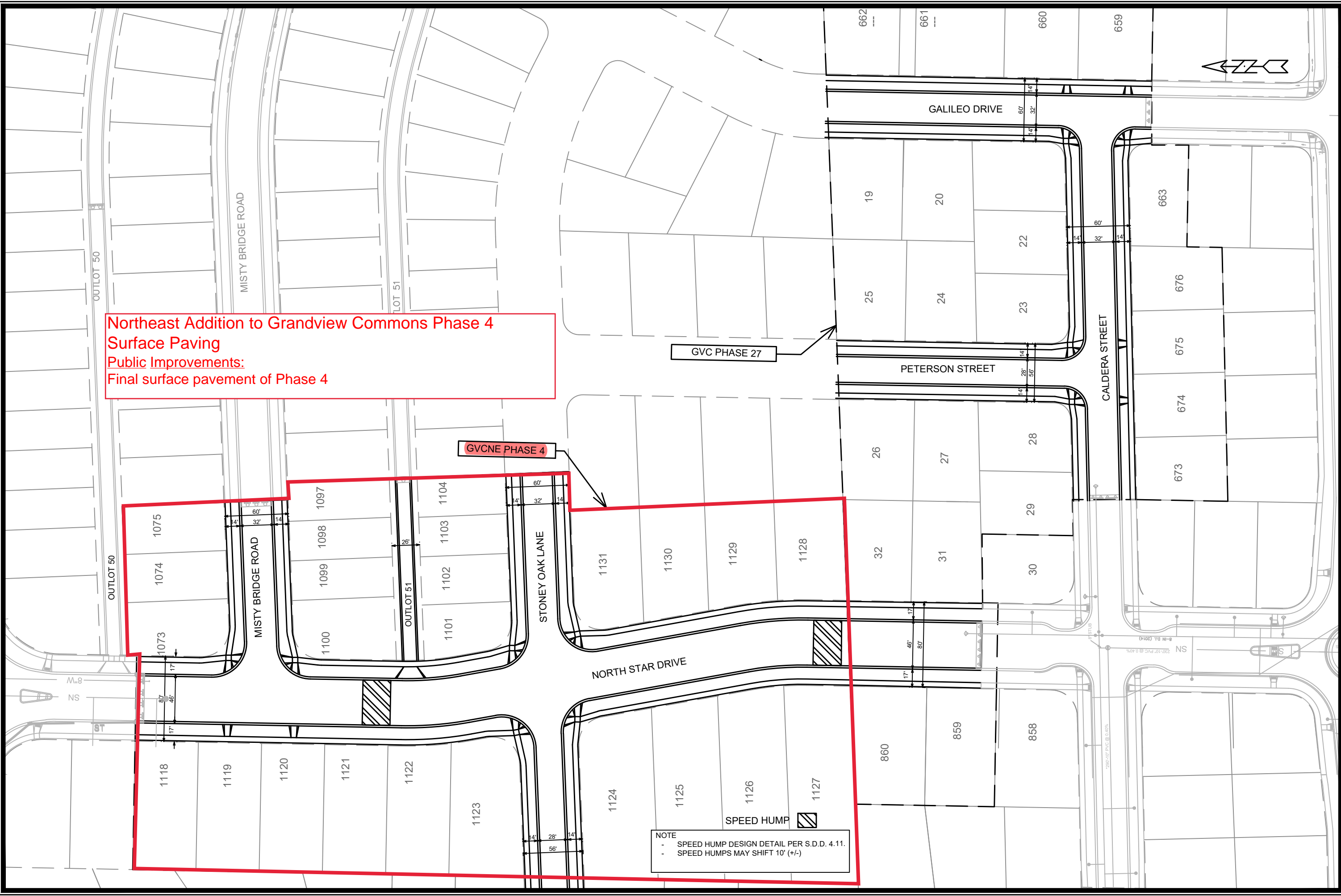
Northeast Addition to Grandview Commons Phase 4
 Surface Paving
 Public Improvements:
 Final surface pavement of Phase 4


GVCNE PHASE 4

GVC PHASE 27

NOTE
 - SPEED HUMP DESIGN DETAIL PER S.D.D. 4.11.
 - SPEED HUMPS MAY SHIFT 10' (+/-)

SPEED HUMP



STREET EXHIBIT		13301 & 13299
GVCNE PHASE 4 & GVC PHASE 27		MADISON, WI
M:\DESIGN\Projects\13301\CAD\Streets\13301EN-Street\Network.dwg		CONTRACT NO: ---
		13301 13299
MARK	REVISION #1	DATE
Designed By: IO	Date: 12/17/2020 10:43 AM	Scale: 1:80
IO	4-2-19	BY