



**133 W. Wilson St.
The Moment**

Nolen Shore
Condominiums

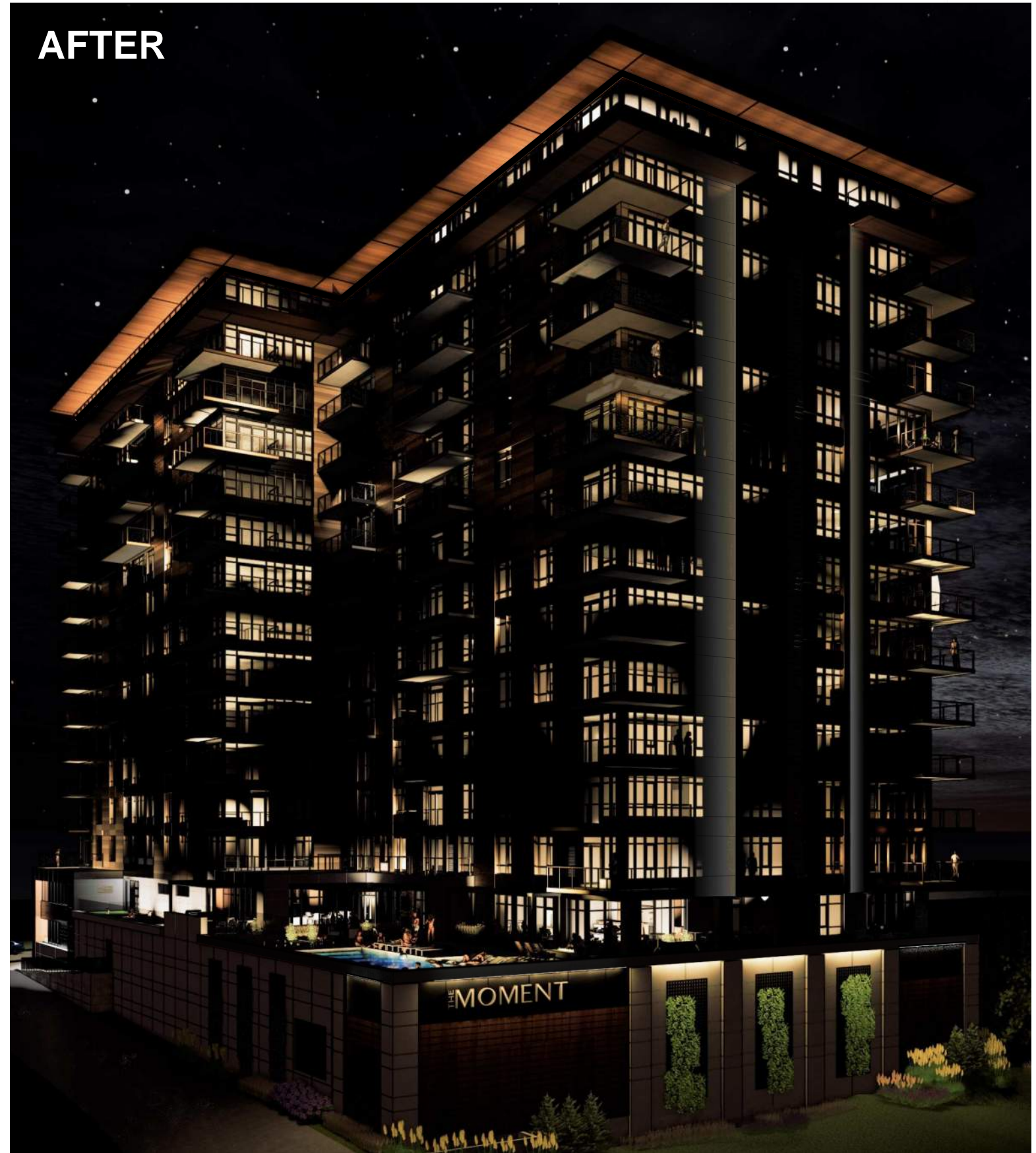
179 W. Wilson St.
(currently under
construction)

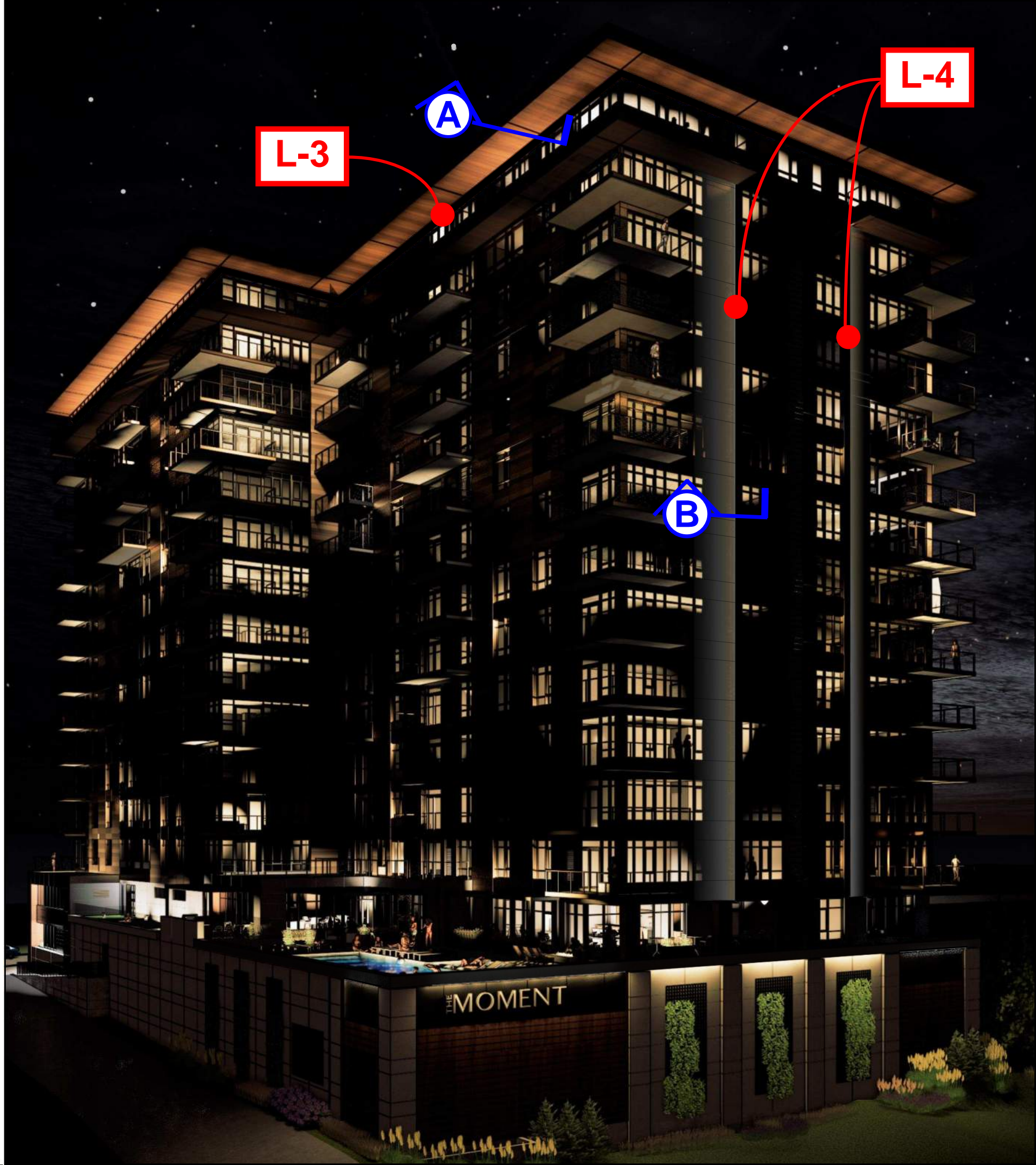
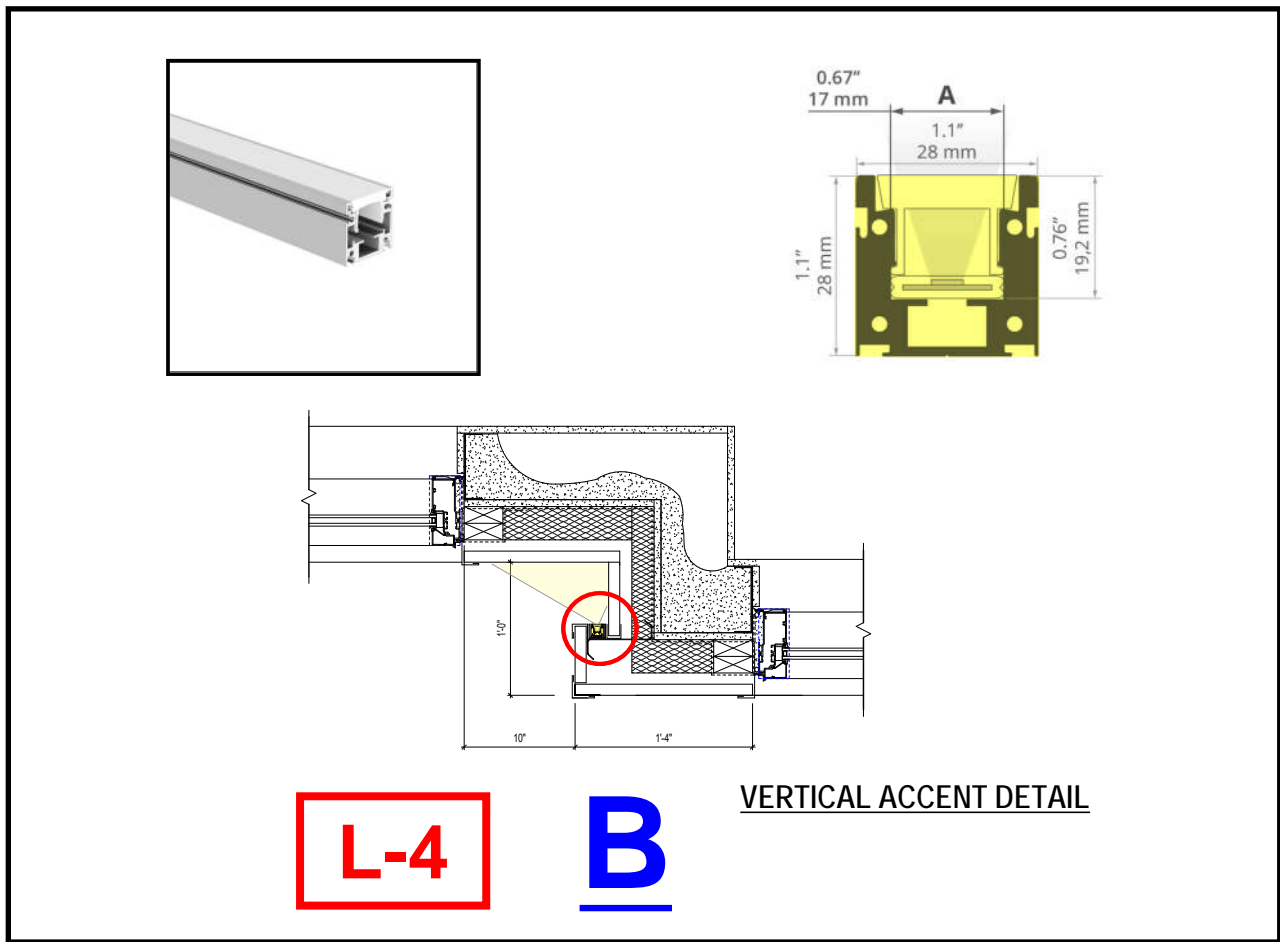
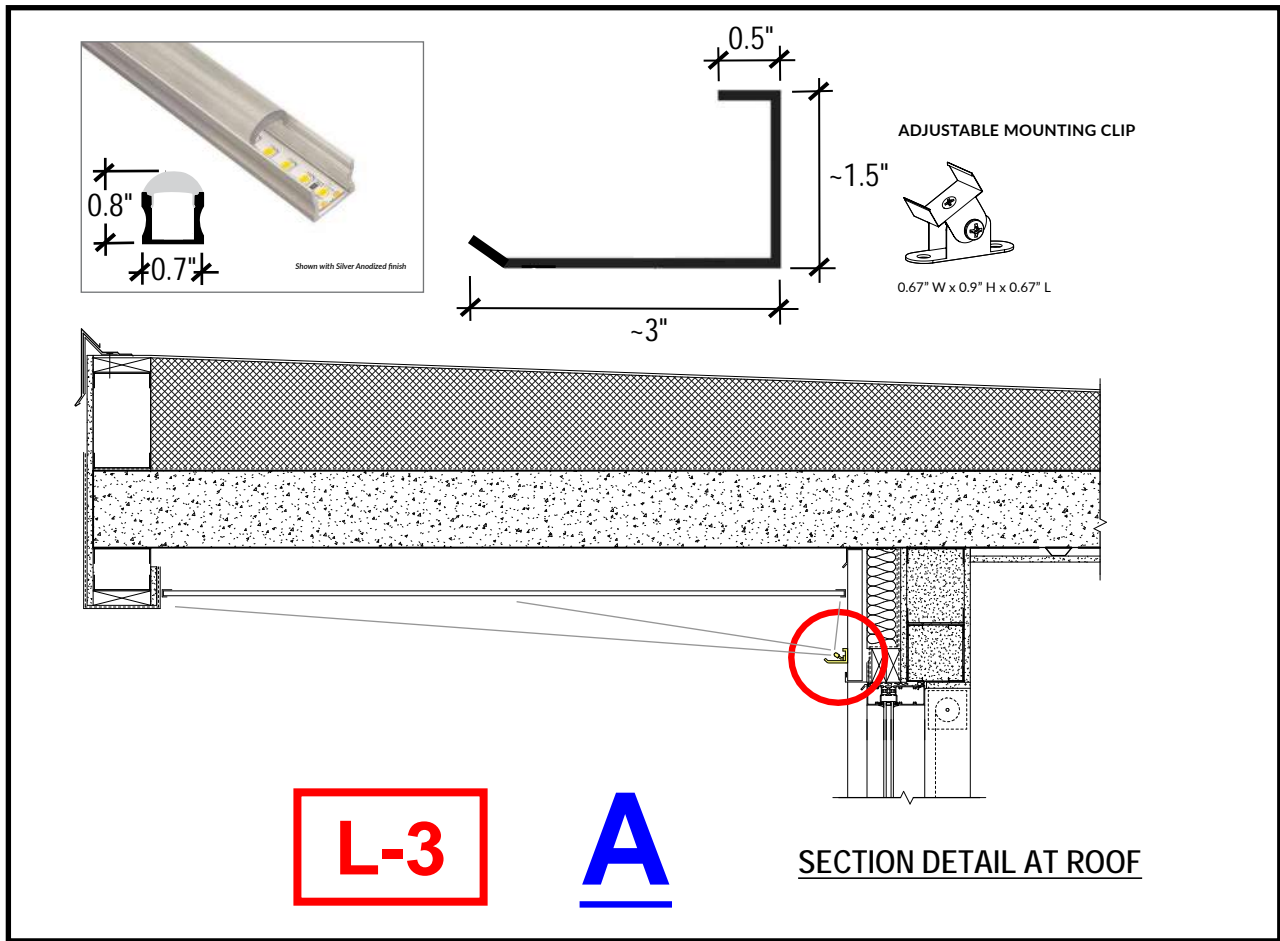
111 W. Wilson St.

BEFORE



AFTER





DEEP GRAZER EXTRUSION + LED TAPELIGHT Fixture Type **L3**



SPECIFICATIONS

FINISH	Silver Anodized, Black Powder Coat, White Powder Coat
LENS	15° Grazing
WATTAGE	1.5W/ft to 7.6W/ft
IP RATING	IP20, IP65 - rating applies to tapelight, see page 2 for details
CCT / COLOR	2200K - 5200K; RGB; RGBW; tunable white; warm fade
BEAM SPREAD	15° typical with Grazing lens
INPUT VOLTAGE	24VDC
LENGTH	Made to order. Actual lengths vary by LED tapelight cut points. Maximum assembled length is 94in. Lengths over 94in are made with multiple sections, shipped unassembled.
OUTPUT	117 to 651 lm/ft
LEDS	Single binned LEDs +/- 30-70 CCT, MacAdam 3 SDCM
MATERIAL	Extrusion - Anodized aluminum; Lens - Polycarbonate
MOUNTING	Mounting clips recommended
POWER SUPPLY	Requires a 24V power supply - see page 5
WARRANTY	IP20 - 5 year limited, IP65 - 3 year limited

5 YEAR
LIMITED
WARRANTY



FEATURES & RECOMMENDED APPLICATIONS

Surface-mount extrusion with a deep profile and 15° Clear Grazing lens. Highlight textured walls and irregular surfaces, bringing features to life. Ideal for textured plaster, brick surfaces, stone facades, wave walls, and corrugated surfaces.



PRODUCT: LLI-DEP-SG-H4.4W-30K-24V-94IN

DEEP GRAZER EXTRUSION + LED TAPELIGHT

ORDERING GUIDE (CONTINUED)

5. LENGTH

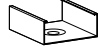

5. LENGTH

Enter overall extrusion length in inches. Maximum assembled length is 94in. Lengths over 94in are made with multiple sections, shipped unassembled. Overall Extrusion+LED tapelight length will be rounded down based on nearest LED tapelight cut point.

6. MOUNTING (OPTIONAL)

6. MOUNTING

 Default [blank] - Standard Clip
ADJ Adjustable Clip

<p>STANDARD MOUNTING CLIP INCLUDED UNLESS OTHERWISE SPECIFIED</p>  <p>0.70" W x 0.68" H x 0.56" L</p>	<p>ADJUSTABLE MOUNTING CLIP</p>  <p>0.67" W x 0.9" H x 0.67" L</p>
---	--

7-9. POWER FEED (OPTIONAL)

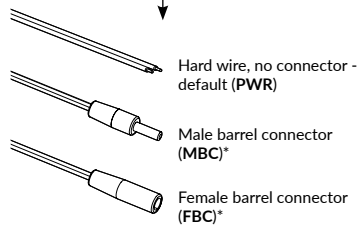
7. LEAD TYPE <input type="text" value="[blank]"/>	8. LEAD LENGTH <input type="text" value="[blank]"/>	9. FEED TYPE <input type="text" value="[blank]"/>
--	--	--

Default [blank] - 48" hard wire end feed (PWR48EF)

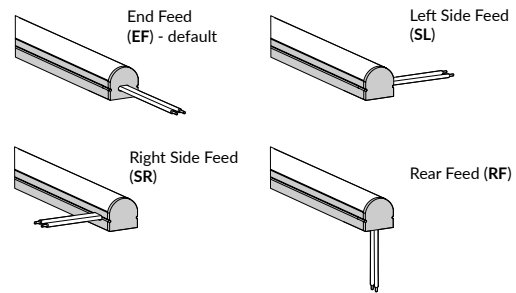
- PWR** Hard wire
- MBC*** Male barrel
- FBC*** Female barrel

Enter desired wire length in inches.

- EF** End Feed
- SL** Left Side Feed
- SR** Right Side Feed
- RF** Rear Feed

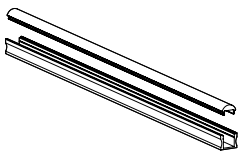


STANDARD 48" HARD WIRE END FEED INCLUDED UNLESS OTHERWISE SPECIFIED

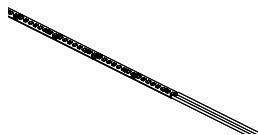


*Barrel connectors not compatible with RGB, RGB(W), or Tunable White tapelights.

WHAT'S INCLUDED



EXTRUSION WITH LENS



LED TAPELIGHT WITH POWER FEED



ENDCAPS



MOUNTING CLIPS

Extrusion HR-OPTI

Ref. A01844

Ref. arch C1844

Fixture Type **L4**

KLUŠ Inspiring Solutions



- For installation on facades
- Designed for IP68 and IK10 protection ratings
- Corrosion resistance at high salinity
- Corresponds to the width of the HR-MAX facade system
- Adjustable lighting angle

APPLICATION

- decorative lighting

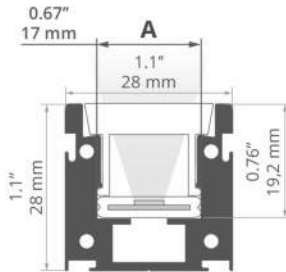
MOUNTING

- to the surface, using dedicated accessories

ADDITIONAL INFORMATION

- possibility to fasten the lighting fixture with the back or side to the mounting surface
- possibility of smooth transition from a facade into an in-ground lighting fixture
- standard lengths of KLUŠ profiles and covers: 1000 mm (tolerance ± 1.5 mm) and 2005 mm / 3010 mm (tolerance + 5 mm); for selected covers: 6050 mm, 10050 mm (tolerance + 5 mm)
- when choosing a different length of profiles / covers than available in the standard, you should additionally choose the cutting service at KLUŠ

TECHNICAL DRAWING



TECHNICAL SPECIFICATIONS

Material	aluminum
Color	■ silver anodized
Possible fixture IP	20, 65, 68
Possible fixture shapes	linear
Profile cross-section	rectangular
Width	1.1"
Height	1.1"
LED gluing width A	0.67"
Number of LED strips A (8 mm wide)	2
Lighting angle adjustment up to	240
Corrosion resistance at high salinity	yes
Impact protection IK10	yes
Building type	Outdoor, Commercial, Retail, Hotel / Restaurant
Facility zone	urban architecture, facade lighting, wall lighting, green architecture
The cover is cut to the length of the profile	yes
Wire out back of extrusion	yes

Length	Ref
39.37"	A01844A_1 C1844ANODA_1
78.94"	A01844A_2 C1844ANODA_2
9'11"	A01844A_3 C1844ANODA_3

SAMPLE PROJECTS



RELATED ACCESSORIES > COVERS

NAME	MATERIAL	MATERIAL TRANSMITTANCE	COLOR	REF.
HR-21	PMMA	45 %	frosted	B17152M 17152

RELATED ACCESSORIES > END CAPS

NAME	MATERIAL	COLOR	REF.
HR-OPTI-STN	stainless steel	gray	C28019N00 24387

RELATED ACCESSORIES > OTHER ACCESSORIES > MOUNTING BRACKETS



MOUNTING BRACKET
HR-OPTI-45
C28091N00
Ref. arch 42125



MOUNTING BRACKET
HR-OPTI-75
C28092N00
Ref. arch 42138



MOUNTING BRACKET
HR-OPTI-90
C28093N00
Ref. arch 42170



MOUNTING BRACKET
HR-OPTI-105
C28094N00
Ref. arch 42126



MOUNTING BRACKET
HR-OPTI-155
C28095N00
Ref. arch 42124

Extrusion HR-OPTI

Ref. A01844

Ref. arch C1844

Fixture Type **L4**

KLUŠ Inspiring
Solutions



MOUNTING BRACKET

HR-OPTI

C28090N00

Ref. arch 42121

RELATED ACCESSORIES > OTHER ACCESSORIES > OTHER



HERMETIC COUPLER

C28239C02

Ref. arch 42702



GLAND

M16x1,5

C42271C02

Ref. arch 42271



ANGULAR GLAND

M16x1,5-L90

C28158C02

Ref. arch 42289