

## Ekberg, Meri Rose

---

**From:** Ekberg, Meri Rose  
**Sent:** Friday, August 18, 2023 12:17 PM  
**To:** 'Ron Siggelkow'  
**Cc:** PLLCApplications  
**Subject:** RE: Updated digital plans needed

Thank you, Ron. With this change to the stairwell door, please consider this email as an amendment to the previously issued Certificate of Appropriateness dated 8-17-2022 to approve the updated plans, including changes to the building proportions, addition of mechanicals on the rooftop with the proposed screening, modification to the front entry design, etc.

We will save this information to our records and sign off on the building permit shortly.

Thank you,



**Meri Rose Ekberg** (*she, her, hers*)  
Community & Cultural Resources Planner  
City of Madison Department of Planning &  
Community & Economic Development  
215 Martin Luther King Jr. Blvd., Ste. 017  
Madison, Wisconsin 53703  
P: 608-267-8744 F: 608-266-6377  
Email: [mekberg@cityofmadison.com](mailto:mekberg@cityofmadison.com)

[Sign up for Madison Arts Newsletters for grants & opportunities](#)

---

**From:** Ron Siggelkow <[rsiggelkow@dimensionivmadison.com](mailto:rsiggelkow@dimensionivmadison.com)>  
**Sent:** Wednesday, August 16, 2023 1:33 PM  
**To:** Ekberg, Meri Rose <[MEkberg@cityofmadison.com](mailto:MEkberg@cityofmadison.com)>  
**Subject:** RE: Updated digital plans needed

Caution: This email was sent from an external source. Avoid unknown links and attachments.

Attached is an updated rendering of the S. Baldwin St elevation with a glass lite metal door that will be provided in lieu of the flush door.

Thank you.

Ron Siggelkow

---

**From:** Ekberg, Meri Rose <[MEkberg@cityofmadison.com](mailto:MEkberg@cityofmadison.com)>  
**Sent:** Wednesday, August 9, 2023 3:43 PM  
**To:** Ron Siggelkow <[rsiggelkow@dimensionivmadison.com](mailto:rsiggelkow@dimensionivmadison.com)>  
**Subject:** RE: Updated digital plans needed

Yes, a panelized door could be appropriate as well. Please send along product information for your proposed door when you can and then I can issue the amendment and sign off on the permit.

Thank you,



**Meri Rose Ekberg** (*she, her, hers*)

Community & Cultural Resources Planner  
City of Madison Department of Planning &  
Community & Economic Development  
215 Martin Luther King Jr. Blvd., Ste. 017  
Madison, Wisconsin 53703  
P: 608-267-8744 F: 608-266-6377

Email: [mekberg@cityofmadison.com](mailto:mekberg@cityofmadison.com)

[Sign up for Madison Arts Newsletters for grants & opportunities](#)

---

**From:** Ron Siggelkow <[rsiggelkow@dimensionivmadison.com](mailto:rsiggelkow@dimensionivmadison.com)>

**Sent:** Wednesday, August 9, 2023 3:14 PM

**To:** Ekberg, Meri Rose <[MEkberg@cityofmadison.com](mailto:MEkberg@cityofmadison.com)>

**Subject:** RE: Updated digital plans needed

Caution: This email was sent from an external source. Avoid unknown links and attachments.

We can make that change. For security reasons the owners requested that that door as exit only function not have a glass light. We will discuss the situation with the owner. Would a solid door with historic character defining features (a panelized door for instance) possibly be acceptable in lieu of the vision lite? If that is a possibility, we can research one and send product information to you.

Thanks.

Ron Siggelkow

---

**From:** Ekberg, Meri Rose <[MEkberg@cityofmadison.com](mailto:MEkberg@cityofmadison.com)>

**Sent:** Wednesday, August 9, 2023 2:44 PM

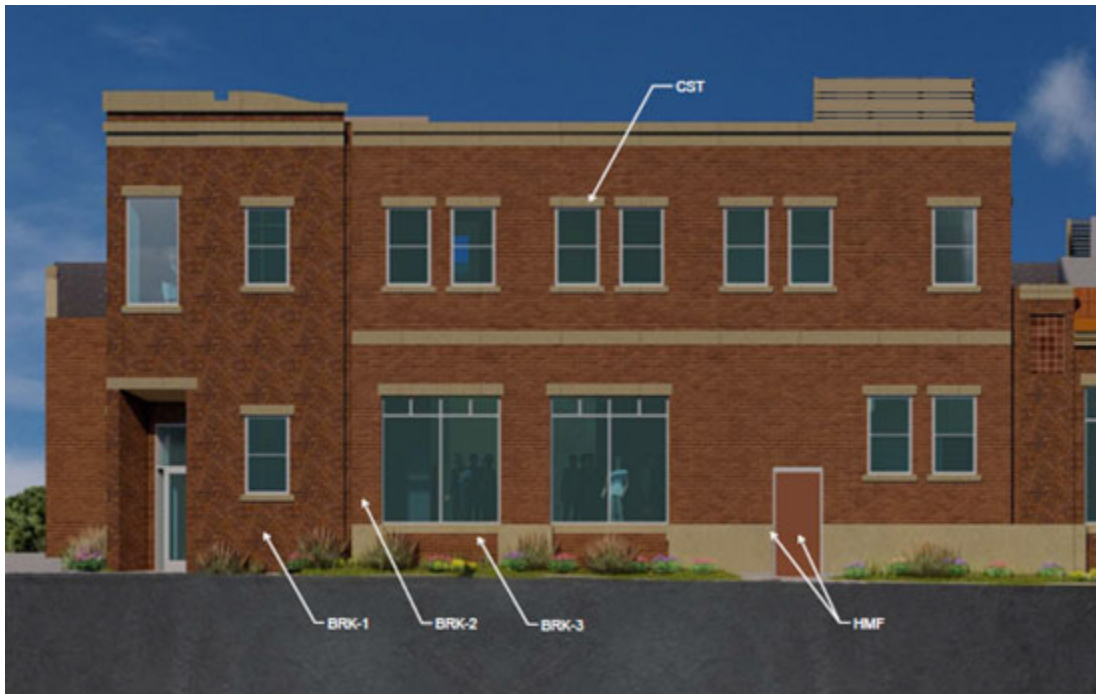
**To:** Ron Siggelkow <[rsiggelkow@dimensionivmadison.com](mailto:rsiggelkow@dimensionivmadison.com)>

**Subject:** RE: Updated digital plans needed

Hello, Ron,

Thank you for sending this in. We can amend the CoA to incorporate the changes to the proportions of the building and the addition of the mechanicals with screening. The one change that we cannot approve is the stairwell door on Baldwin. It appears you are proposing a solid metal door in the rendering on the left. We need the door to match the character of doors from this period of significance. Can you match what was originally proposed in the image on the right?

Here are the standards, for your reference: 41.27 (5) (a) 1: Door and window styles should both match the style of the new structure and be compatible with those on historic resources within two hundred (200) feet.



Thank you,



**Meri Rose Ekberg** (*she, her, hers*)  
 Community & Cultural Resources Planner  
 City of Madison Department of Planning &  
 Community & Economic Development  
 215 Martin Luther King Jr. Blvd., Ste. 017  
 Madison, Wisconsin 53703  
 P: 608-267-8744 F: 608-266-6377  
 Email: [mekberg@cityofmadison.com](mailto:mekberg@cityofmadison.com)

[Sign up for Madison Arts Newsletters for grants & opportunities](#)

---

**From:** Ron Siggelkow <[rsiggelkow@dimensionivmadison.com](mailto:rsiggelkow@dimensionivmadison.com)>  
**Sent:** Tuesday, August 8, 2023 2:28 PM  
**To:** Ekberg, Meri Rose <[MEkberg@cityofmadison.com](mailto:MEkberg@cityofmadison.com)>  
**Subject:** RE: Updated digital plans needed

Caution: This email was sent from an external source. Avoid unknown links and attachments.

Good Afternoon,

Attached are updated rendered elevations with added storefront and window information. Also is attached ceramic tile information. We have learned that this ceramic tile may not be timely available. If we have to change, I will send updated product data.

Thank you.

Ron Siggelkow

---

**From:** Ekberg, Meri Rose <[MEkberg@cityofmadison.com](mailto:MEkberg@cityofmadison.com)>  
**Sent:** Wednesday, July 26, 2023 2:17 PM  
**To:** Ron Siggelkow <[rsiggelkow@dimensionivmadison.com](mailto:rsiggelkow@dimensionivmadison.com)>  
**Subject:** RE: Updated digital plans needed

We would like updated plans and renderings for all facades to attach to the CoA to amend it as the plans we have do not match what was submitted for permitting.

Thank you,



**Meri Rose Ekberg** (*she, her, hers*)  
Community & Cultural Resources Planner  
City of Madison Department of Planning &  
Community & Economic Development  
215 Martin Luther King Jr. Blvd., Ste. 017  
Madison, Wisconsin 53703  
P: 608-267-8744 F: 608-266-6377  
Email: [mekberg@cityofmadison.com](mailto:mekberg@cityofmadison.com)

[Sign up for Madison Arts Newsletters for grants & opportunities](#)

---

**From:** Ron Siggelkow <[rsiggelkow@dimensionivmadison.com](mailto:rsiggelkow@dimensionivmadison.com)>  
**Sent:** Tuesday, July 25, 2023 7:49 AM  
**To:** Ekberg, Meri Rose <[MEkberg@cityofmadison.com](mailto:MEkberg@cityofmadison.com)>  
**Subject:** RE: Updated digital plans needed

Caution: This email was sent from an external source. Avoid unknown links and attachments.

Meri Rose,

Is a colored drawing of the Baldwin elevation what you are requesting in item 1?

Thanks.



Ron Siggelkow

---

**From:** Ekberg, Meri Rose <[MEkberg@cityofmadison.com](mailto:MEkberg@cityofmadison.com)>  
**Sent:** Monday, July 24, 2023 11:26 AM  
**To:** Ron Siggelkow <[rsiggelkow@dimensionivmadison.com](mailto:rsiggelkow@dimensionivmadison.com)>  
**Subject:** RE: Updated digital plans needed

Thank you, Ron. I will save this information to our files and watch for the updated plans.

Best,



**Meri Rose Ekberg** (*she, her, hers*)  
Community & Cultural Resources Planner  
City of Madison Department of Planning &  
Community & Economic Development  
215 Martin Luther King Jr. Blvd., Ste. 017  
Madison, Wisconsin 53703  
P: 608-267-8744 F: 608-266-6377  
Email: [mekberg@cityofmadison.com](mailto:mekberg@cityofmadison.com)

[Sign up for Madison Arts Newsletters for grants & opportunities](#)

---

**From:** Ron Siggelkow <[rsiggelkow@dimensionivmadison.com](mailto:rsiggelkow@dimensionivmadison.com)>  
**Sent:** Monday, July 24, 2023 9:22 AM  
**To:** Ekberg, Meri Rose <[MEkberg@cityofmadison.com](mailto:MEkberg@cityofmadison.com)>  
**Subject:** RE: Updated digital plans needed

Caution: This email was sent from an external source. Avoid unknown links and attachments.

FYI: [Ernie Stetenfeld](#) has retired as St Vincent de Paul CEO. The new CEO is Julie Bennett ([jbennett@svdpmadison.org](mailto:jbennett@svdpmadison.org)) Let me know if you need anything else.

Thanks.

Ron Siggelkow

---

**From:** Ron Siggelkow  
**Sent:** Monday, July 24, 2023 9:14 AM  
**To:** Ekberg, Meri Rose <[MEkberg@cityofmadison.com](mailto:MEkberg@cityofmadison.com)>  
**Subject:** RE: Updated digital plans needed

We will take care of it ASAP.

Sincerely,

Ron Siggelkow

---

**From:** Ekberg, Meri Rose <[MEkberg@cityofmadison.com](mailto:MEkberg@cityofmadison.com)>  
**Sent:** Friday, July 21, 2023 12:56 PM

**To:** Ron Siggelkow <[rsiggelkow@dimensionivmadison.com](mailto:rsiggelkow@dimensionivmadison.com)>

**Subject:** FW: Updated digital plans needed

You don't often get email from [mekberg@cityofmadison.com](mailto:mekberg@cityofmadison.com). [Learn why this is important](#)

Forwarding the below email as it bounced when I use the applicant on record for the CoA. Can you assist with the request below regarding 1390 Williamson – St Vincent DePaul?

Thank you,



**Meri Rose Ekberg** (*she, her, hers*)

Community & Cultural Resources Planner  
City of Madison Department of Planning &  
Community & Economic Development  
215 Martin Luther King Jr. Blvd., Ste. 017  
Madison, Wisconsin 53703

P: 608-267-8744 F: 608-266-6377

Email: [mekberg@cityofmadison.com](mailto:mekberg@cityofmadison.com)

[Sign up for Madison Arts Newsletters for grants & opportunities](#)

---

**From:** Ekberg, Meri Rose

**Sent:** Wednesday, July 19, 2023 11:14 AM

**To:** 'estetenfeld@svdpmadison.com' <[estetenfeld@svdpmadison.com](mailto:estetenfeld@svdpmadison.com)>

**Subject:** Updated digital plans needed

Hello,

I reviewed your building plans today and there are a few items that have changed from the plans we have for the Certificate of Appropriateness. Before we can sign off on the building permits, we will need:

- 1) Updated digital plans/renderings showing the adjusted stairwell door and window location on S Baldwin
- 2) Specs for the exterior doors and windows
- 3) A photo or spec sheet or the proposed exterior masonry tile for the insets on the S Baldwin facade

Thank you,



**Meri Rose Ekberg** (*she, her, hers*)

Community & Cultural Resources Planner  
City of Madison Department of Planning &  
Community & Economic Development  
215 Martin Luther King Jr. Blvd., Ste. 017  
Madison, Wisconsin 53703

P: 608-267-8744 F: 608-266-6377

Email: [mekberg@cityofmadison.com](mailto:mekberg@cityofmadison.com)

[Sign up for Madison Arts Newsletters for grants & opportunities](#)

# ELEVATION LEGEND

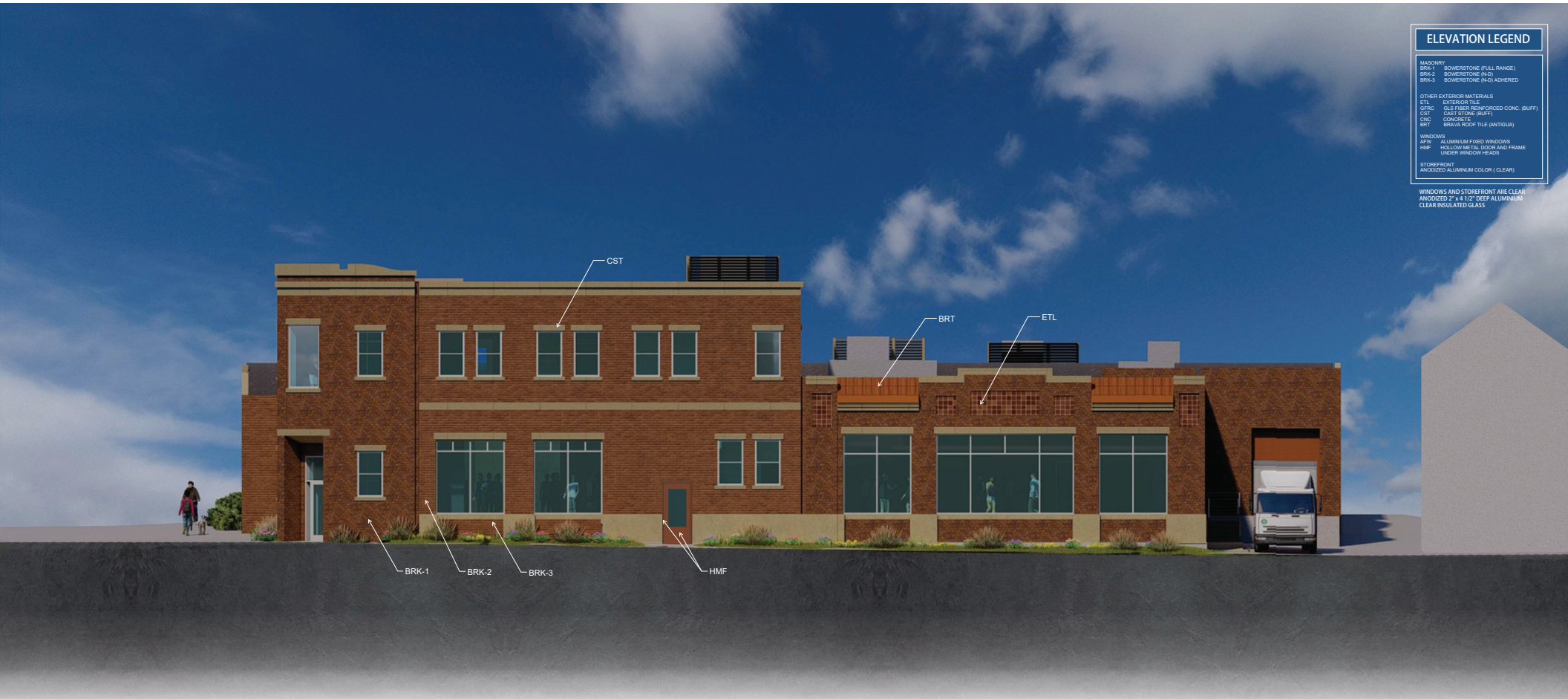
MASONRY  
BRK-1 BOWERSTONE (FULL RANGE)  
BRK-2 BOWERSTONE (NO)  
BRK-3 BOWERSTONE (NO) ADHERED

OTHER EXTERIOR MATERIALS  
ETL EXTERIOR TILE  
CTR CONC. CAST STONE (BUFF)  
CST CAST STONE (BUFF)  
CAC CONCRETE  
BRT GRAVA ROOF TILE (ANTIGUA)

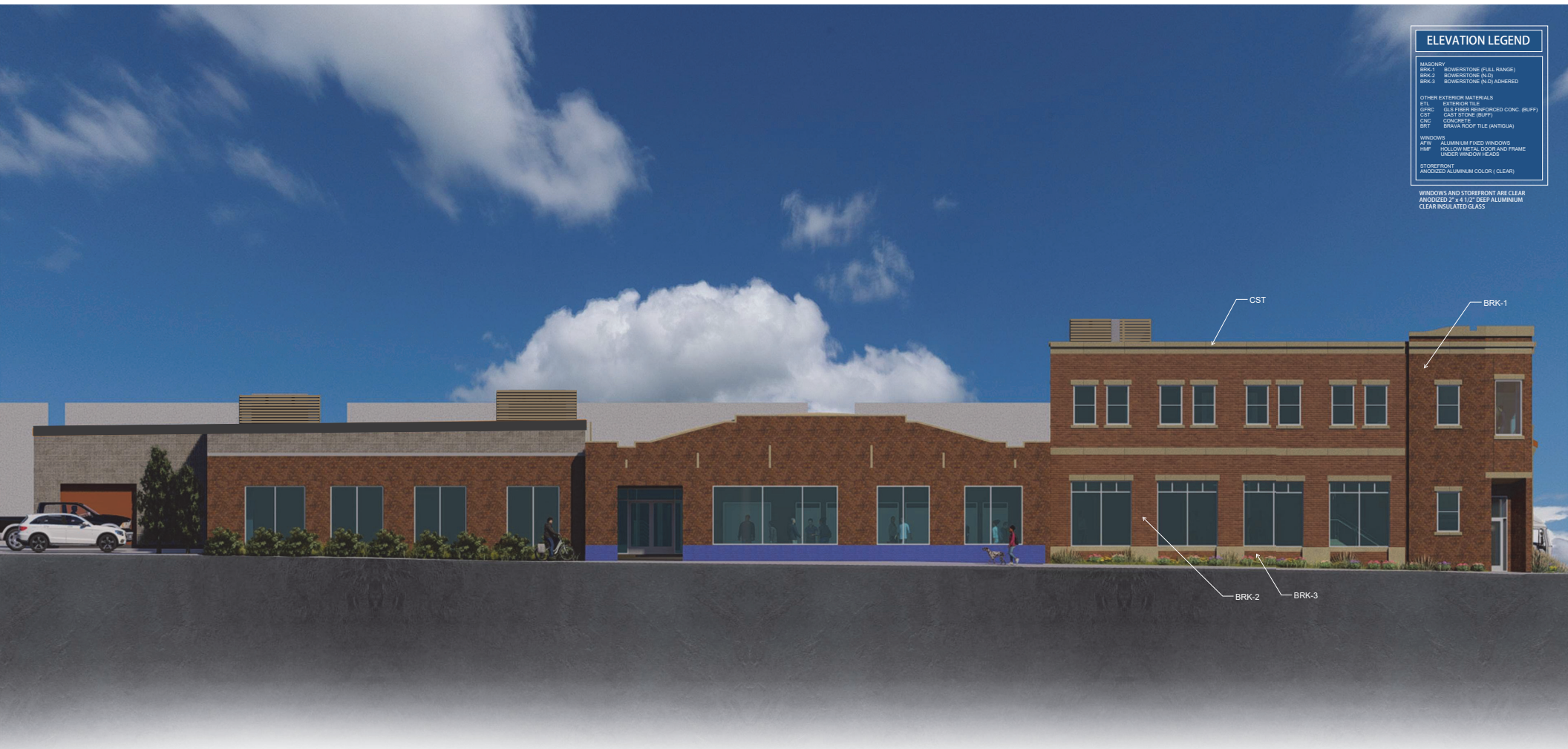
WINDOWS  
AFW ALUMINUM FIXED WINDOWS  
HMF HOLLOW METAL DOOR AND FRAME  
UNDER WINDOW HEADS

STOREFRONT  
ANDROZDZ ALUMINUM COLOR (CLEAR)

WINDOWS AND STOREFRONT ARE CLEAR  
ANDROZDZ 2" x 4 1/2" DEEP ALUMINUM  
CLEAR INSULATED GLASS







ELEVATION LEGEND	
MASONRY	
BRK-1	BOWERSTONE (FULL RANGE)
BRK-2	BOWERSTONE (NO. 2)
BRK-3	BOWERSTONE (NO. 3) ADHERED
OTHER EXTERIOR MATERIALS	
STL	EXTERIOR TILE
CST	CAST STONE (BUFF)
CNC	CONCRETE
STL	GRAVEL ROOF TILE (ANTIQUE)
WINDOWS	
AFW	ALUMINUM FIXED WINDOWS
HMF	HOLLOW METAL DOOR AND FRAME
	UNDER WINDOW HEADS
STOREFRONT	
	ANODIZED ALUMINUM COLOR (CLEAR)

WINDOWS AND STOREFRONT ARE CLEAR  
ANODIZED 2" x 4 1/2" DEEP ALUMINUM  
CLEAR INSULATED GLASS

**DIMENSION**   
— Madison Design Group

architecture interior design planning  
6515 Grand Teton Plaza, Suite 120, Madison, Wisconsin 53719  
608.829.4444 608.829.4445 dimensionmadison.com

ST. VINCENT de PAUL BALDWIN - WILLIAMSON

1309 Williamson St. Madison, WI 53703  
ELEVATIONS  
07/28/2023  
21123





CST

HMF

BRK-2

BRK-1

# ELEVATION LEGEND

MASONRY  
BRK-1 BOWERSTONE (FULL RANGE)  
BRK-2 BOWERSTONE (NO. 2)  
BRK-3 BOWERSTONE (NO. 3) ADHERED

OTHER EXTERIOR MATERIALS  
ETL EXTERIOR TILE  
GFRG GAST PIERCE REINFORCED CONC. (BUFF)  
CST CAST STONE (BUFF)  
CAC CONCRETE  
SRT GRAVA ROOF TILE (ANTIGUA)

WINDOWS  
AFW ALUMINUM FIXED WINDOWS  
HMF HOLLOW METAL DOOR AND FRAME  
UNDER WINDOW HEADS

STOREFRONT  
ANODIZED ALUMINUM COLOR (CLEAR)

WINDOWS AND STOREFRONT ARE CLEAR  
ANODIZED 2" x 4 1/2" DEEP ALUMINUM  
CLEAR INSULATED GLASS

**DIMENSION**  
Madison Design Group

architects - interior design - planning  
6515 Grand Teton Plaza, Suite 120, Madison, Wisconsin 53719  
608.829.4444 608.829.4445 dimensionvmadison.com

ST. VINCENT de PAUL BALDWIN - WILLIAMSON

1309 Williamson St. Madison, WI 53703

ELEVATIONS  
07/28/2023  
21123

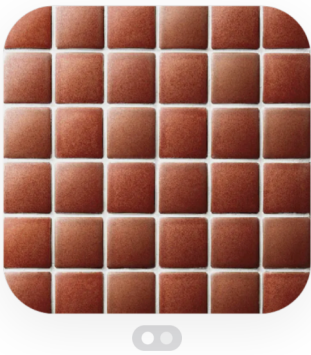




Sign In

Join for FREE

Search materials, products, brands and more



INAX  
Madoka-R

Colorway  
Red

Usage  
Commercial, Residential

Delivery  
✓ FedEx Priority Overnight

Price Range  
\$\$\$

SKU  
IM-45P1/MDK-33

Colorways



INAX  
✓ Red



INAX  
✓ Moss Green



INAX  
✓ Black



INAX  
✓ White

Description  
Beautifully crafted, Madoka-R's gently rounded convex form and softened edges create a seductive, curved finish.  
Materials: Ceramic, Porcelain Tile

Sample Size: 4 in x 4 in

Availability: Typically Stocked  
Lead Time: 1-2 weeks  
Country of Origin: Japan

Characteristics

Content: Porcelain

Backing: Mesh

Construction: Glazed

Technical

✓

^

Format: Modular

Size: 45mm x 45mm tiles on 285mm x 285mm sheet

Overall Thickness: 9.5mm

Grout Width: 3 mm

Maintenance

^

Refer to the Cleaning Instructions PDF attachment for more information.

Application

^

Indoor & Outdoor: Indoor, Outdoor

Applications: Bathroom Wall, Shower Wall, Kitchen Wall, Backsplash, Interior Wall, Pool

Installation: Refer to Installation Instructions PDF attachment for more information.

Environmental

^

Environmental Benefits: This product is inherently low emitting.

LEED: This product may contribute to LEED credits.

Downloads

^

Care and Maintenance

Installation Instructions