



Public Involvement Meeting #2

Garver Path

(Sugar Avenue – Milwaukee Street)



Introductions & Project Contacts

Reid Stiteley

City of Madison Engineering

(608) 266-4093

rstiteley@cityofmadison.com

Chris Petykowski, P.E.

City of Madison Engineering

(608) 267-8678

cpetykowski@cityofmadison.com

Samantha Herheim, P.E.

KL Engineering, Inc.

(608) 663-1218

sherheim@klengineering.com

Hannah Mohelnitzky

City of Madison Engineering

Public Information Officer

(608) 242-6003

hmohelnitzky@cityofmadison.com

Alder Marsha Rummel

City of Madison Common Council

District 6

district6@cityofmadison.com

Alder Grant Foster

City of Madison Common Council

District 15

district15@cityofmadison.com



Meeting Outline & Expectations

6:00 – 6:15	Open House
6:15 – 6:45	Welcome & Project Presentation
6:45 – 7:15	Q & A / Comments
7:15 – 8:00	Open House



Meeting Goals



- Purpose & Need of the Project
 - Benefits to the Community
- Preliminary Design Features
 - Pathway & Structures
 - Alternate Alignments
- Project Schedule
 - Design and Construction
- Provide Feedback & Ask Questions



Public Meeting #1 Recap

- Lighting
 - Dark Sky Compliant, Overnight Lighting Concern
- Structure
 - Width, Aesthetic Fit, Nature Viewing
- Milwaukee Street Connection
 - Traffic and Crossing Safety
- Path Design
 - Routes, Path Flooding
- Environment
 - Concerns With Impacts to Wildlife, Greenspace, and Floodplain



Comments
Repeated on
Upcoming
Slides

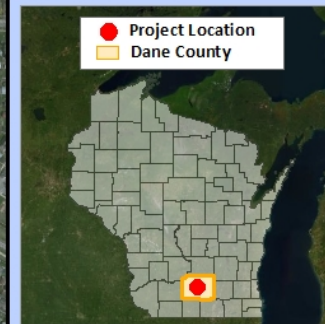
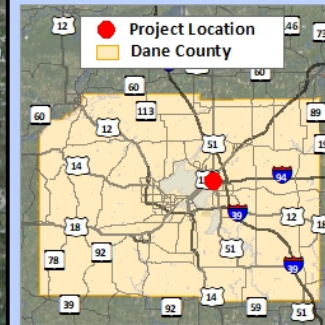


Project Overview



Project Location

Project ID: 5992-10-40
 City of Madison, Garver Path
 (Sugar Ave – Milwaukee St)
 Non-Highway
 Dane County



Project Purpose & Need

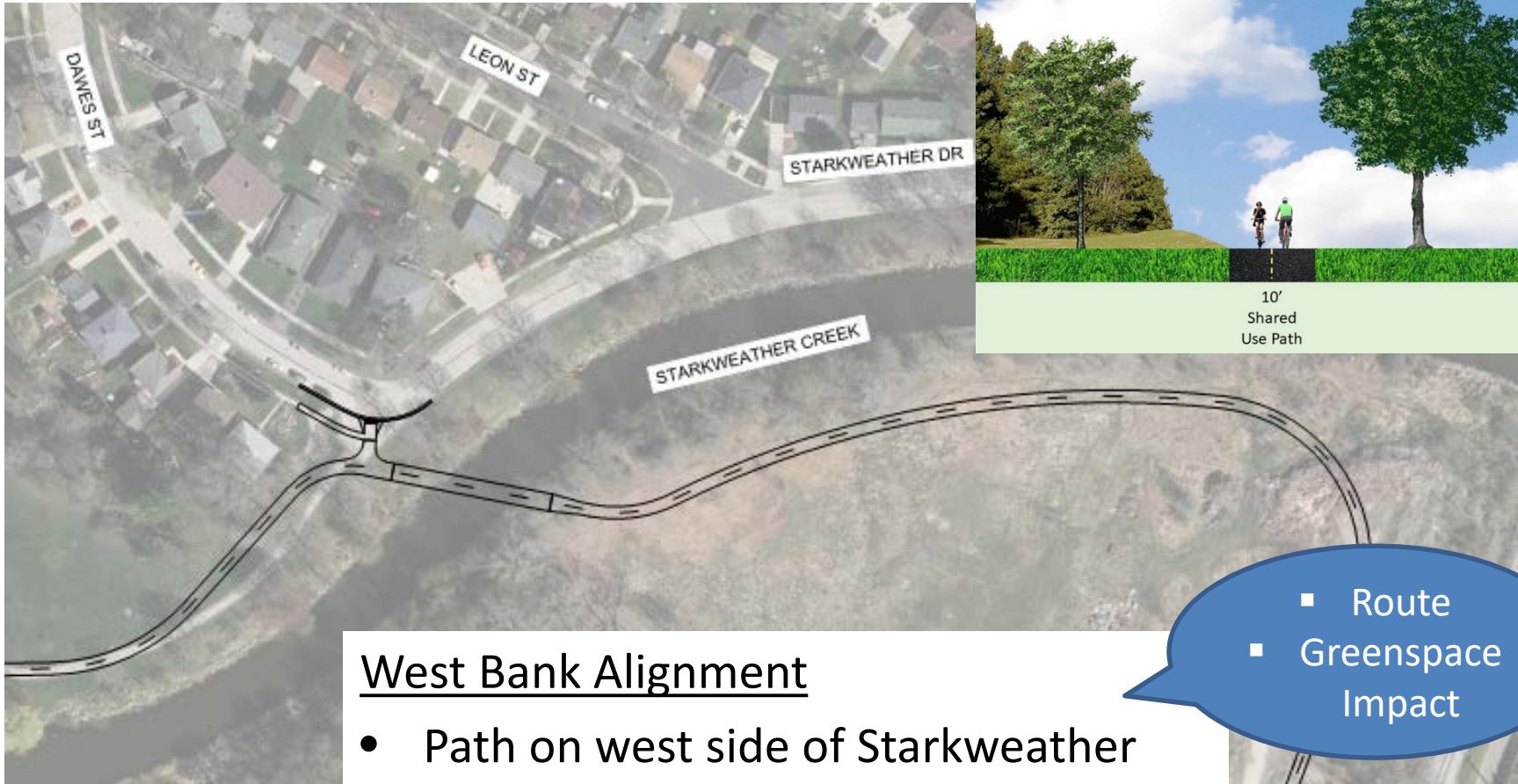


- Existing Path & Structure Condition
- Access to Neighborhoods, Parks, and Commercial Areas
- Connections to Path Network



Proposed Improvements

Starkweather Creek Corridor



West Bank Alignment

- Path on west side of Starkweather Creek
- New Bridge at Dawes Street

- Route
- Greenspace Impact



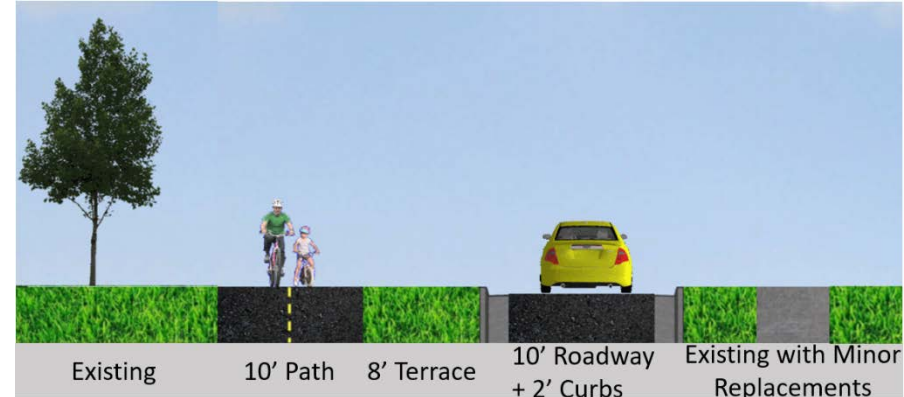
Proposed Improvements

Starkweather
Creek Corridor



Starkweather Drive Alignment

- New Bridge near Hargrove Street
- Starkweather Drive Converted to One-Way Street, Terrace and Path
- Curb Ramp Realignment
- Utility Replacements
- Any Defective Sidewalk and Curb Replacement - Assessed



Proposed Improvements

Starkweather
Creek Corridor

West Bank Alignment

- Connectivity
 - Path near future Garver Feed Mill improvements
 - Aligns with Dawes St bike route
- Environment
 - Impervious surface 42'
 - Some tree impacts at bridge location
- Total Project Cost
 - \$1.7 million

Starkweather Drive Alignment

- Connectivity
 - Path through neighborhood
 - Aligns with Dawes St bike route
 - Connects to Leon, Richard and Hargrove Streets
- Environment
 - Constructed within a disturbed footprint
 - Impervious surface 24'
 - Some tree impacts at bridge location
 - Trees in greenspace preserved
- Total Project Cost
 - \$1.9 million



Proposed Improvements

Ivy Street Bridge

- Width
- Aesthetics
- Nature Watching



- Replace Ivy Street Bridge over Starkweather Creek
- Wider Structure for Shared Use and Nature Viewing



Proposed Improvements

Wetland
Structure

- Leon St Alternative Evaluated
- Wetland Structure Alt Selected
- 10' Path with 5' Shoulders
- Structure over Wetlands
- Wetland Evaluation
 - Brushy Wet Woodland
 - Box elder canopy, dense understory of invasive shrubs, ground layer mostly garlic mustard
- Wetland Enhancements

- Route
- Path Flooding
- Wildlife Impact
- Floodplain Impact

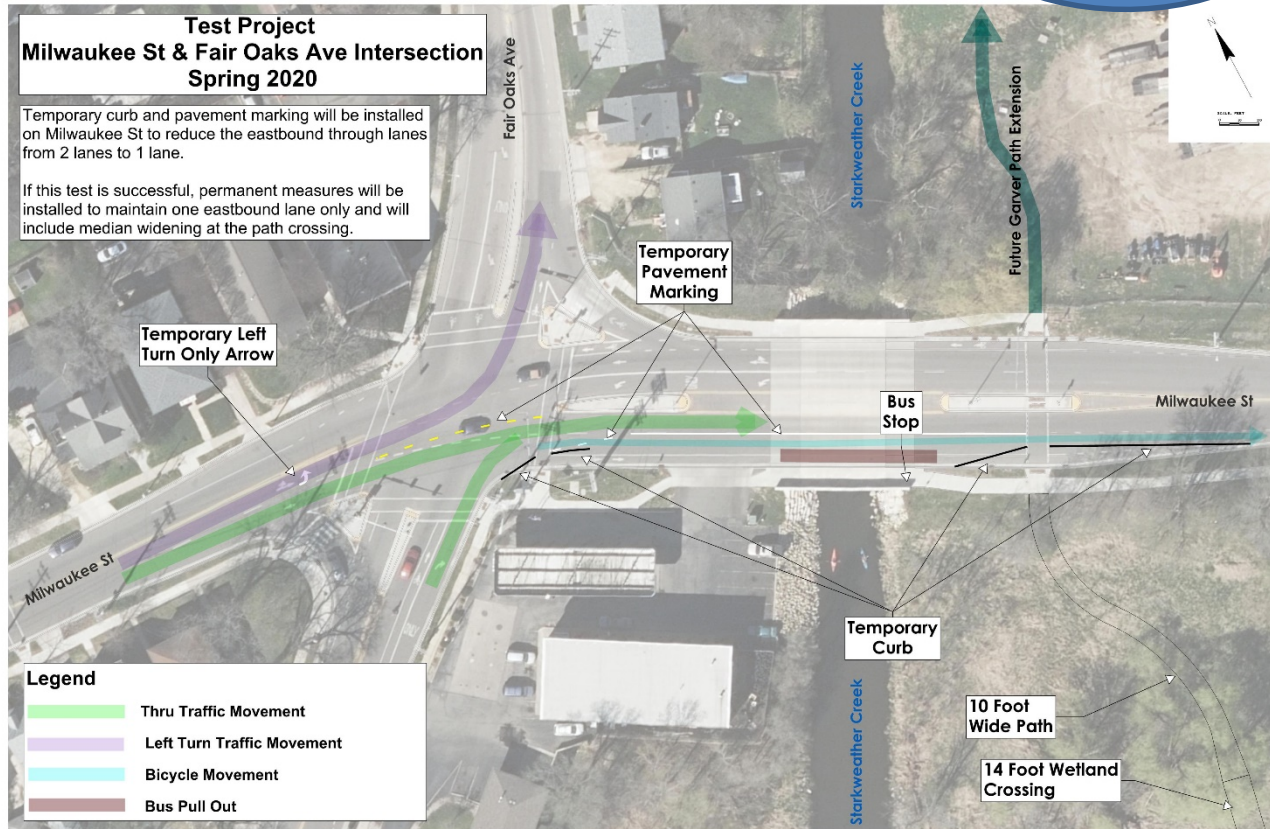


Proposed Improvements

Milwaukee
Street Crossing

- Existing Crossing With Median Refuge
- Test Project in Spring 2020

Traffic &
Crossing
Safety

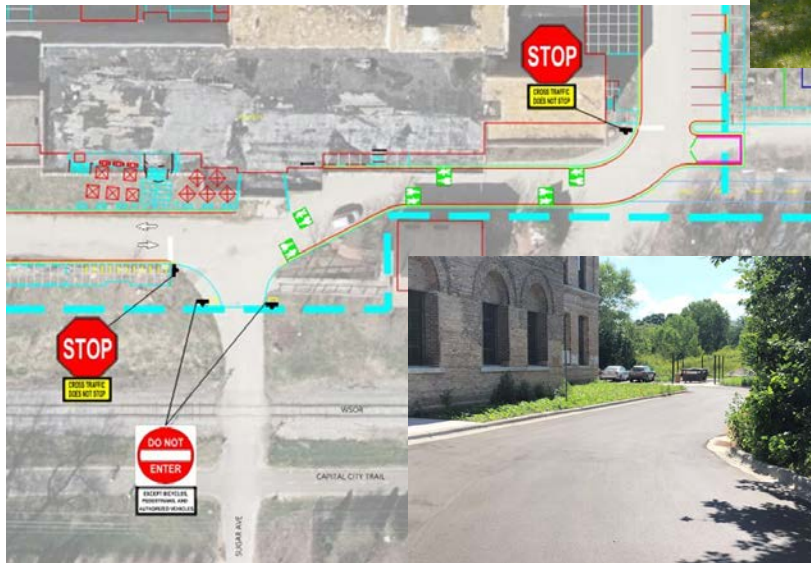


Proposed Improvements

Bridge aesthetics

Design Progress

- Garver Feed Mill Alignment
- Structure Aesthetics
- Path Lighting
 - Dark sky compliant
 - Lights on at night



▪ Dark Sky Compliant
▪ Overnight lighting concern



Proposed Improvements

Ongoing Design Tasks

- Starkweather Creek Floodway and Floodplain Impacts
- Construction Access Route



Project Schedule & Costs

Winter 2019/2020 – Summer 2020

- Alternative Selection
- Updated Design
- Agency Coordination
- 3rd Public Involvement Meeting
- Final Design

Spring 2021 – Summer 2021

- 4th Public Involvement Meeting (Pre-Construction)
- Construction

Anticipated Construction Costs


- West Bank Alternative = \$1.7 M
 - \$850,000 (Federal Funds)
 - \$850,000 (Local Funds)
- Starkweather Drive Alternative = \$1.9 M
 - \$850,000 (Federal Funds)
 - \$1,050,000 (Local Funds)



Project Information & Website

<https://www.cityofmadison.com/engineering/projects/garver-path>

Garver Path




Project Details

- Project Type: [Bike](#)
- Location(s):
 - 3267 Garver Green
 - Madison, WI 53714
- Area: East
- Aldermanic District(s): [District 6](#)
- Estimated Schedule: 05/10/2021 to 08/27/2021
- Project Status: In Design

Project Contact:

Reid Stiteley
608-266-4093
rstiteley@cityofmadison.com

[Active Project List](#)

Subscribe to Email List: 

Subscribe
for Email
Updates

Follow us on <https://www.facebook.com/CityofMadison/>



Comment Forms

Please Return by January 10, 2020



Comments or Questions ?

