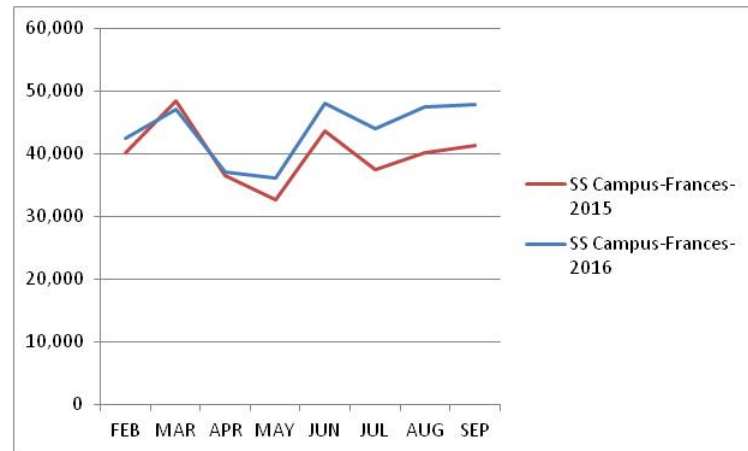
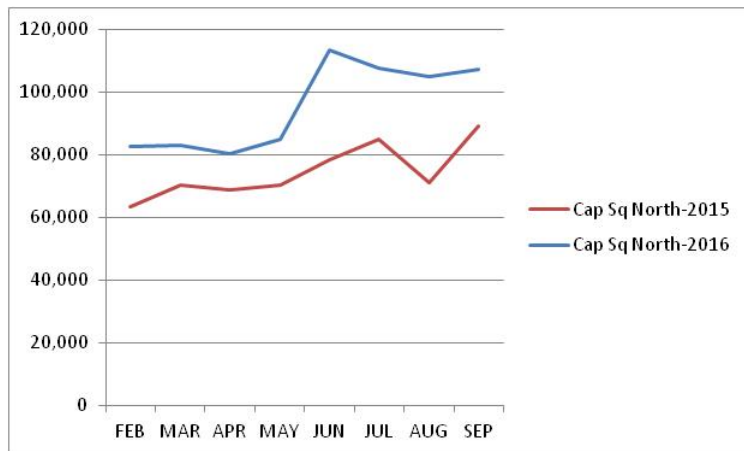
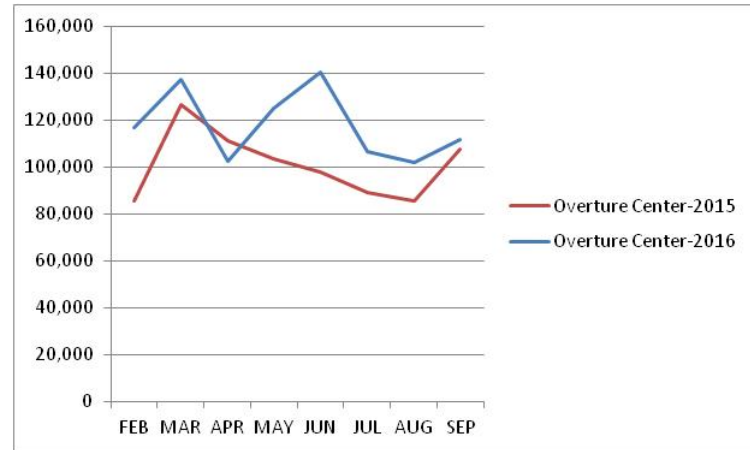
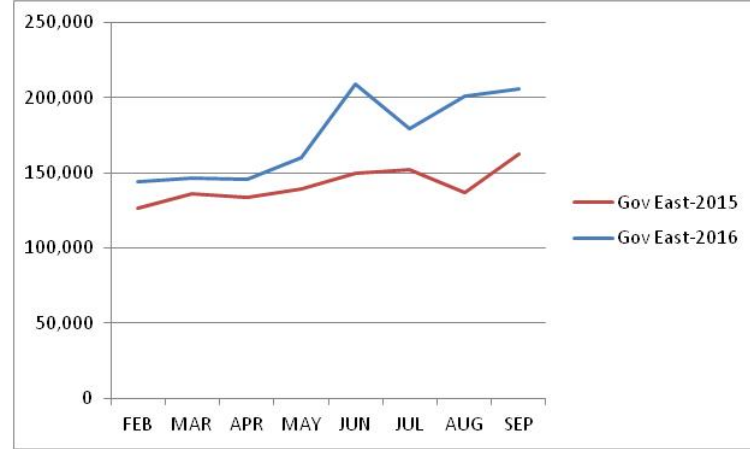
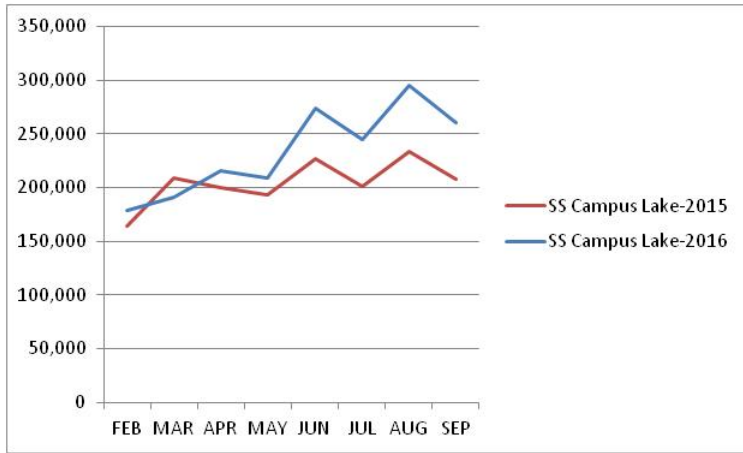
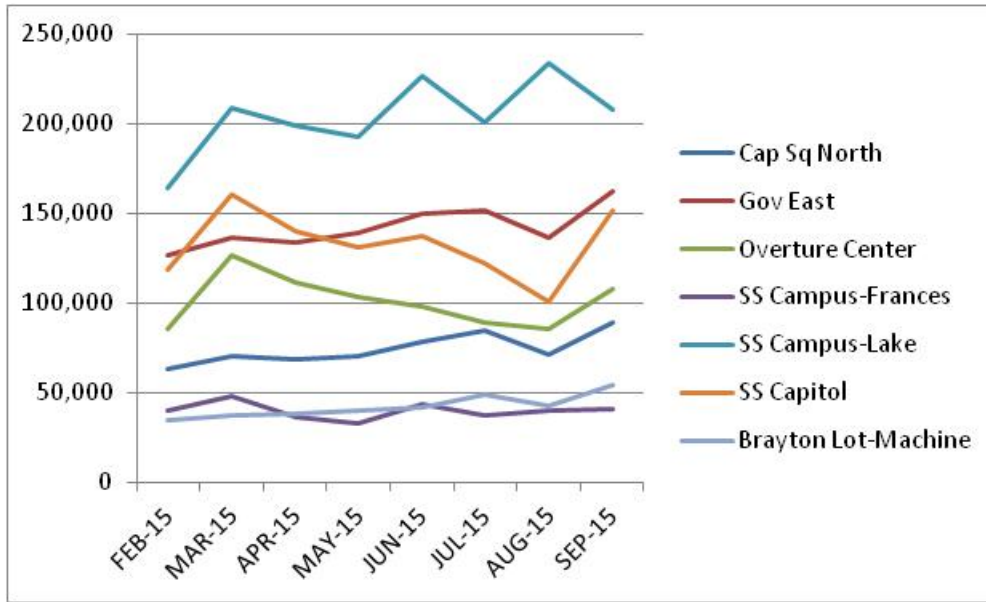


2015 & 2016 Monthly Cashiered Revenues by Facility (February through September). Rate Change effective June 1, 2016.

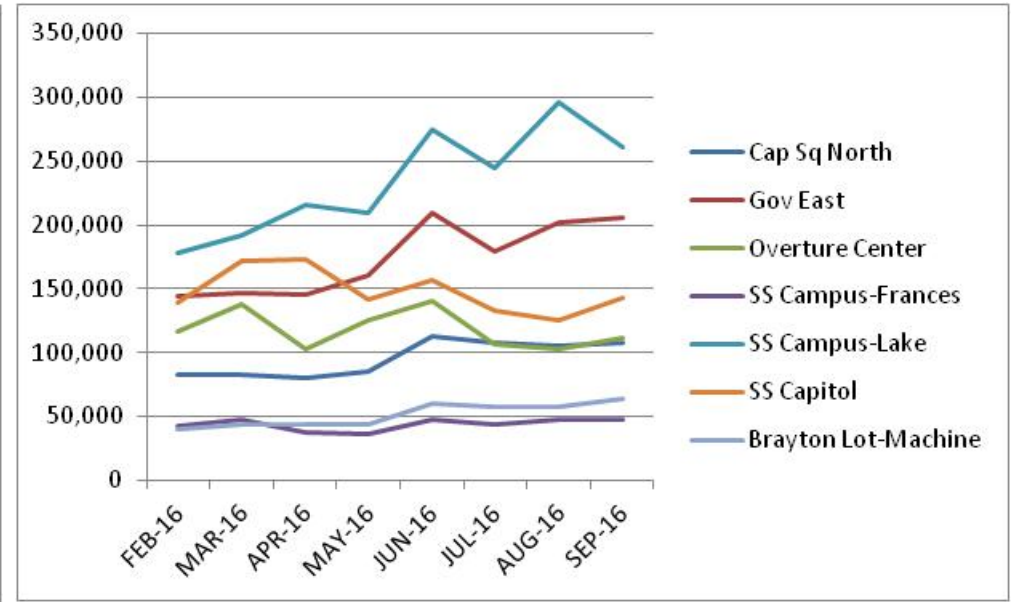


2015 Cashiered Revenue by Month (Feb – Sept)



2015								
Facility Name	FEB-15	MAR-15	APR-15	MAY-15	JUN-15	JUL-15	AUG-15	SEP-15
Cap Sq North	63,454	70,225	68,639	70,157	78,565	84,930	71,019	89,300
Gov East	126,353	136,333	134,087	139,479	150,048	152,168	136,827	162,684
Overture Center	85,591	126,898	111,431	103,576	97,740	88,961	85,808	107,705
SS Campus-Frances	40,170	48,466	36,599	32,643	43,603	37,444	40,121	41,394
SS Campus-Lake	164,337	209,318	199,507	193,157	227,183	201,243	234,140	207,575
SS Capitol	118,491	160,889	140,236	130,932	137,055	122,415	101,158	151,560
Brayton Lot-Machine	34,480	37,756	38,193	39,879	42,203	49,107	42,717	53,945
Total	632,877	789,885	728,691	709,822	776,396	736,267	711,790	814,164

2016 Cashiered Revenue by Month (Feb – Sept)



2016								
Facility Name	FEB-16	MAR-16	APR-16	MAY-16	JUN-16	JUL-16	AUG-16	SEP-16
Cap Sq North	82,653	83,117	80,481	84,863	113,337	107,508	104,948	107,177
Gov East	144,010	146,439	145,503	160,254	209,098	179,632	201,318	205,556
Overture Center	117,096	137,342	102,753	125,187	140,283	106,656	102,216	111,933
SS Campus-Frances	42,496	47,074	37,147	36,105	48,105	44,110	47,489	47,914
SS Campus-Lake	178,230	191,285	215,161	209,382	274,146	245,175	295,710	260,629
SS Capitol	139,561	171,935	173,496	142,059	157,168	132,600	125,187	142,873
Brayton Lot-Machine	40,568	43,153	44,101	44,108	60,372	57,549	57,511	64,195
Total	744,614	820,345	798,641	801,959	1,002,508	873,230	934,381	940,279

REVENUES 2015 VS 2016 FEBRUARY

Variances from budget typically result from one or more of the following factors: changes in the number of spaces in service and/or revenue-generating days; changes in usage levels due to events, weather, price resistance, etc.; changes in length of stay; and projection 'misses.' Such impacts are listed in the right-hand columns for variances of +/- \$1,000 or greater.

						Change (2016 +/- 2015)	
s	Occ	Days		2015	2016	Amount	Pct
Permits							
			82127 RP3 (Residential Parking Permits)	2,306	1,913	-393	-17%
			82058 Motorcycle Permits	0		0	
						0	
Total-Permits				2,306	1,913	-393	-17%
Advertising Revenue							
Attended Facilities							
			82106 Awards and Damages				
			82000 ALL Cashiered Ramps			0	
603	83%	30	82001 Cap Sq North	63,454	82,653	19,199	30%
511	87%	30	82003 Gov East	126,353	144,010	17,657	14%
607	85%	30	82002 Overture Center	85,591	117,096	31,505	37%
530		30	82005 SS Campus-Frances	40,170	42,496	2,327	6%
518	64%	30	82006 SS Campus-Lake	164,337	178,230	13,893	8%
778	56%	30	82007 SS Capitol	118,491	139,561	21,070	18%
Total-Attended Facilities				598,396	704,046	105,650	18%
Meters-Off-Street (non-motorcycle)							
13		25	82055 Blair Lot	450	623	173	38%
8	38%	25	82056 Lot 88 (Munic Bldg)	674	534	-139	-21%
241	104%	25	82008 Brayton Lot-Machine	34,480	40,568	6,087	18%
53	34%	25	82053 Buckeye/Lot 58 Multi-Space	12,702	19,002	6,299	50%
		25	Evergreen Lot			0	
23	48%	25	82054 Evergreen Lot Multi-Space	2,799	2,886	87	3%
19	32%	25	82057 Wingra Lot	724	536	-189	-26%
36	14%	25	82052 SS Capitol	3,464	4,043	578	17%
Subtotal-Off-Street Meters (non cycle)				55,294	68,190	12,896	23%
51			82058-82071 All Cycles	4,180	666	-3,514	-84%
Total-Off-Street Meters (All)				59,474	68,856	9,382	16%
On-Street Meters							
			82074/82126/82088 On Street Multi-Space, Sngl Space & MobileNow	4,070	3,343	-728	-18%
11	79%	25	82089 Capitol Square Meters	1,441	1,651	210	15%
14	73%	25	82075 Capitol Square Multi-Space	3,325	3,056	-269	-8%
49	44%	25	82090 Campus Area	4,347	4,031	-316	-7%
140	26%	25	82076 Campus Area Multi-Space	15,305	19,835	4,530	30%
22	99%	25	82091 CCB Area	3,258	3,559	301	9%
72	39%	25	82077 CCB Area Multi-Space	10,165	8,079	-2,086	-21%
84	44%	25	82092 East Washington Area	3,259	3,593	335	10%
10	50%	25	82078 East Washington Area Multi-Space	1,480	1,422	-58	-4%
39	83%	25	82093 GEF Area	2,610	3,175	565	22%
33	84%	25	82079 GEF Area Multi-Space	6,756	7,935	1,180	17%
27	64%	25	82094 MATC Area	864	1,097	233	27%
75	36%	25	82080 MATC Area Multi-Space	10,537	13,588	3,051	29%
60	54%	25	82095 Meriter Area	3,145	4,017	872	28%
67	38%	25	82081 Meriter Area Multi-Space	7,847	10,990	3,142	40%
16	100%	25	82096 MMB Area	2,975	3,319	344	12%
89	61%	25	82082 MMB Area Multi-Space	10,695	9,569	-1,125	-11%
123		25	82097 Monroe Area	8,592	9,111	520	6%
18		25	82098 Schenks Area	2,045	836	-1,209	-59%
15	53%	25	82099 State St Area	1,145	1,885	740	65%
112	35%	25	82085 State St Area Multi-Space	13,397	13,778	380	3%
115	58%	25	82100 University Area	12,803	12,046	-757	-6%
83	36%	25	82086 University Area Multi-Space	10,895	12,532	1,637	15%
74	87%	25	82101 Wilson/Butler Area	2,474	3,202	729	29%
37	46%	25	82087 Wilson/Butler Area Multi-Space	3,749	4,204	455	12%
Subtotal-On-Street Meters				147,180	159,854	12,674	9%
			82107 Contractor Permits	1,374	1,308	-66	-5%
			82111 Meter Hoods	15,938	24,761	8,823	55%
				17,312	26,069	8,757	51%
Total-On-Street Meters				164,492	185,923	21,431	13%
Monthly Parking and Long-Term Agreements							
69	80%	21	82020 Brayton Lot	11,915	12,964	1,049	9%
88	51%	21	82014 State St Campus	15,605	29,591	13,986	90%
44		21	82018 Blair Lot	7,404	5,229	-2,176	-29%
50		21	82023 Wilson Lot	5,009	4,332	-678	-14%
168	83%	21	82010 Cap Square North	37,251	23,825	-13,426	-36%
68	76%	21	82012 Gov East	26,364	16,232	-10,132	-38%
50	61%	21	82011 Overture Center	6,562	5,206	-1,356	-21%
201	55%	21	82016 SS Capitol-Monthly (non-LT Lease)	47,293	15,795	-31,498	-67%
Subtotal-Monthly Permit				157,403	113,174	-44,230	-28%
172		21	82027 Overture Center	14,942	18,188	3,246	22%
50		21	82032 SS Cap-Long Term Lease		9,884	9,884	
Subtotal-Long Term Parking Leases				14,942	28,073	13,131	88%
Total-Monthly Parking and Long-Term Agreements				172,345	141,246	-31,099	-18%
Miscellaneous Revenue							
			82134 Operating Lease Payments			0	
			82112 Permits; Property Sales; Other; Construction Meter	54	85	31	57%
Subtotal-Miscellaneous Revenue				54	85	31	57%
Summary-RP3 & Miscellaneous Revenue				2,360	1,998	-362	-15%
GRAND TOTALS				997,067	1,102,069	105,002	11%

REVENUES 2015 VS 2016 MARCH									
Variances from budget typically result from one or more of the following factors: changes in the number of spaces in service and/or revenue-generating days; changes in usage levels due to events, weather, price resistance, etc. changes in length of stay, and projection 'misses.' Such impacts are listed in the right-hand columns for variances of +/- \$1,000 or greater.									
s		Occ	Days	2015	2016	Change (2016 +/- 2015)			
						Amount	Pct		
		Permits							
			82127	RP3 (Residential Parking Permits)	2,268	2,266	-2	0%	
			82058	Motorcycle Permits	641	1,710	1,069	167%	
						0			
Total-Permits					2,909	3,976	1,067	37%	
		82106	Awards and Damages						
		Advertising Revenue							
		Attended Facilities							
			82000	ALL Cashiered Ramps			0		
603	78%	30	82001	Cap Sq North	70,225	83,117	12,891	18%	
511	81%	30	82003	Gov East	136,333	146,439	10,106	7%	
607	89%	30	82002	Overture Center	126,898	137,342	10,445	8%	
530		30	82005	SS Campus-Frances	48,466	47,074	-1,392	-3%	
518	62%	30	82006	SS Campus-Lake	209,318	191,285	-18,033	-9%	
778	58%	30	82007	SS Capitol	160,889	171,935	11,046	7%	
Total-Attended Facilities					752,129	777,193	25,063	3%	
		Meters-Off-Street (non-motorcycle)							
13		25	82055	Blair Lot	441	721	280	63%	
8	100%	25	82056	Lot 88 (Munic Bldg)	779	692	-87	-11%	
241	83%	25	82008	Brayton Lot-Machine	37,756	43,153	5,397	14%	
53	41%	25	82053	Buckeye/Lot 58 Multi-Space	16,528	19,014	2,486	15%	
		25		Evergreen Lot			0		
23	46%	25	82054	Evergreen Lot Multi-Space	2,930	2,458	-472	-16%	
19	16%	25	82057	Wingra Lot	946	797	-149	-16%	
36	14%	25	82052	SS Capitol	4,304	3,001	-1,303	-30%	
Subtotal-Off-Street Meters (non cycle)					63,684	69,836	6,152	10%	
51			82058-82071	All Cycles	214	7,174	6,960	3249%	
Total-Off-Street Meters (All)					63,898	77,010	13,112	21%	
		On-Street Meters							
			82074/82126/82088	On Street Multi-Space, Sngl Space & MobileNow	4,462	5,084	622	14%	
11	78%	25	82089	Capitol Square Meters	1,784	1,412	-372	-21%	
14	76%	25	82075	Capitol Square Multi-Space	3,098	3,773	675	22%	
49	55%	25	82090	Campus Area	6,097	5,743	-354	-6%	
140	27%	25	82076	Campus Area Multi-Space	20,395	21,261	866	4%	
22	67%	25	82091	CCB Area	3,622	3,711	88	2%	
72	35%	25	82077	CCB Area Multi-Space	12,090	10,067	-2,023	-17%	
84	39%	25	82092	East Washington Area	3,970	3,885	-85	-2%	
10	21%	25	82078	East Washington Area Multi-Space	1,161	1,922	761	66%	
39	65%	25	82093	GEF Area	3,156	3,795	639	20%	
33	68%	25	82079	GEF Area Multi-Space	7,665	8,169	505	7%	
27	64%	25	82094	MATC Area	1,571	1,521	-50	-3%	
75	36%	25	82080	MATC Area Multi-Space	12,903	13,184	282	2%	
60	42%	25	82095	Meriter Area	3,661	4,541	880	24%	
67	38%	25	82081	Meriter Area Multi-Space	10,971	10,276	-695	-6%	
16	92%	25	82096	MMB Area	5,273	3,471	-1,802	-34%	
89	53%	25	82082	MMB Area Multi-Space	11,827	10,775	-1,052	-9%	
123		25	82097	Monroe Area	9,094	10,991	1,897	21%	
18		25	82098	Schenks Area	798	1,090	291	37%	
15	38%	25	82099	State St Area	1,432	1,842	410	29%	
112	36%	25	82085	State St Area Multi-Space	17,146	17,034	-112	-1%	
115	55%	25	82100	University Area	11,606	13,433	1,827	16%	
83	39%	25	82086	University Area Multi-Space	12,744	13,016	272	2%	
74	70%	25	82101	Wilson/Butler Area	4,379	3,149	-1,230	-28%	
37	14%	25	82087	Wilson/Butler Area Multi-Space	3,851	3,884	33	1%	
Subtotal-On-Street Meters					175,073	177,029	1,956	1%	
			82107	Contractor Permits	2,588	2,251	-336	-13%	
			82111	Meter Hoods	31,080	26,469	-4,611	-15%	
					33,667	28,720	-4,947	-15%	
Total-On-Street Meters					208,740	205,749	-2,991	-1%	
		Monthly Parking and Long-Term Agreements							
69	0%	21	82020	Brayton Lot	11,526	9,953	-1,572	-14%	
88	0%	21	82014	State St Campus	16,706	35,673	18,968	114%	
44		21	82018	Blair Lot	5,658	5,062	-596	-11%	
50		21	82023	Wilson Lot	5,905	4,605	-1,300	-22%	
168	0%	21	82010	Cap Square North	39,465	27,245	-12,220	-31%	
68	0%	21	82012	Gov East	26,638	17,027	-9,611	-36%	
50	0%	21	82011	Overture Center	6,784	4,389	-2,395	-35%	
201	0%	21	82016	SS Capitol-Monthly (non-LT Lease)	29,536	21,051	-8,486	-29%	
Subtotal-Monthly Permit					142,218	125,004	-17,213	-12%	
172		21	82027	Overture Center	15,005	17,296	2,290	15%	
50		21	82032	SS Cap-Long Term Lease	1,069	9,884	8,816	825%	
Subtotal-Long Term Parking Leases					16,074	27,180	11,106	69%	
Total-Monthly Parking and Long-Term Agreements					158,292	152,184	-6,107	-4%	
		Miscellaneous Revenue							
			82134	Operating Lease Payments			0		
			82112	Permits; Property Sales; Other; Construction Meter	111	1,453	1,341	1206%	
Subtotal-Miscellaneous Revenue					111	1,453	1,341	1206%	
Summary-RP3 & Miscellaneous Revenue					3,020	5,429	2,409	80%	
GRAND TOTALS					1,186,079	1,217,565	31,486	3%	

REVENUES 2015 VS 2016 APRIL

Variances from budget typically result from one or more of the following factors: changes in the number of spaces in service and/or revenue-generating days; changes in usage levels due to events, weather, price resistance, etc.; changes in length of stay; and projection 'misses.' Such impacts are listed in the right-hand columns for variances of +/- \$1,000 or greater.

						Change (2016 +/- 2015)	
s	Occ	Days		2015	2016	Amount	Pct
Permits							
			82127 RP3 (Residential Parking Permits)	4,164	2,350	-1,814	-44%
			82058 Motorcycle Permits	1,732	857	-875	-51%
						0	
Total-Permits				5,896	3,207	-2,689	-46%
Advertising Revenue							
Attended Facilities							
			82106 Awards and Damages				
			82000 ALL Cashiered Ramps			0	
603	84%	30	82001 Cap Sq North	68,639	80,481	11,842	17%
511	85%	30	82003 Gov East	134,087	145,503	11,416	9%
607	90%	30	82002 Overture Center	111,431	102,753	-8,677	-8%
530		30	82005 SS Campus-Frances	36,599	37,147	549	1%
518	67%	30	82006 SS Campus-Lake	199,507	215,161	15,654	8%
778	56%	30	82007 SS Capitol	140,236	173,496	33,260	24%
Total-Attended Facilities				690,498	754,541	64,043	9%
Meters-Off-Street (non-motorcycle)							
13		25	82055 Blair Lot	786	546	-240	-31%
8	75%	25	82056 Lot 88 (Munic Bldg)	702	640	-63	-9%
241	86%	25	82008 Brayton Lot-Machine	38,193	44,101	5,908	15%
53	36%	25	82053 Buckeye/Lot 58 Multi-Space	15,310	18,321	3,011	20%
		25	Evergreen Lot			0	
23	47%	25	82054 Evergreen Lot Multi-Space	2,348	2,415	67	3%
19	5%	25	82057 Wingra Lot	669	699	31	5%
36	12%	25	82052 SS Capitol	3,801	3,739	-62	-2%
Subtotal-Off-Street Meters (non cycle)				61,809	70,460	8,651	14%
51			82058-82071 All Cycles	5,501	41	-5,460	-99%
Total-Off-Street Meters (All)				67,309	70,501	3,192	5%
On-Street Meters							
			82074/82126/82088 On Street Multi-Space, Sngl Space & MobileNow	5,404	4,731	-673	-12%
11	67%	25	82089 Capitol Square Meters	2,368	684	-1,684	-71%
14	77%	25	82075 Capitol Square Multi-Space	3,402	3,087	-315	-9%
49	62%	25	82090 Campus Area	5,755	5,625	-130	-2%
140	29%	25	82076 Campus Area Multi-Space	20,193	20,586	393	2%
22	67%	25	82091 CCB Area	3,521	3,277	-245	-7%
72	39%	25	82077 CCB Area Multi-Space	13,090	9,080	-4,010	-31%
84	44%	25	82092 East Washington Area	4,710	3,967	-742	-16%
10	480%	25	82078 East Washington Area Multi-Space	1,803	1,509	-294	-16%
39	68%	25	82093 GEF Area	3,822	3,596	-226	-6%
33	88%	25	82079 GEF Area Multi-Space	8,024	7,957	-67	-1%
27	50%	25	82094 MATC Area	1,668	1,692	23	1%
75	35%	25	82080 MATC Area Multi-Space	14,334	12,398	-1,935	-14%
60	50%	25	82095 Meriter Area	4,202	5,184	982	23%
67	46%	25	82081 Meriter Area Multi-Space	10,393	11,758	1,364	13%
16	89%	25	82096 MMB Area	4,835	3,232	-1,604	-33%
89	63%	25	82082 MMB Area Multi-Space	14,168	9,290	-4,878	-34%
123		25	82097 Monroe Area	9,193	12,270	3,077	33%
18		25	82098 Schenks Area	1,128	1,033	-96	-8%
15	73%	25	82099 State St Area	2,376	2,775	399	17%
112	38%	25	82085 State St Area Multi-Space	16,135	15,915	-220	-1%
115	66%	25	82100 University Area	14,619	13,733	-886	-6%
83	40%	25	82086 University Area Multi-Space	13,001	12,060	-941	-7%
74	72%	25	82101 Wilson/Butler Area	3,976	3,448	-528	-13%
37	38%	25	82087 Wilson/Butler Area Multi-Space	5,705	4,989	-716	-13%
Subtotal-On-Street Meters				187,826	173,875	-13,951	-7%
			82107 Contractor Permits	2,754	2,071	-683	-25%
			82111 Meter Hoods	22,688	29,864	7,177	32%
				25,441	31,935	6,494	26%
Total-On-Street Meters				213,268	205,810	-7,457	-3%
Monthly Parking and Long-Term Agreements							
69	82%	21	82020 Brayton Lot	10,900	10,185	-714	-7%
88	53%	21	82014 State St Campus	16,521	29,195	12,675	77%
44		21	82018 Blair Lot	5,109	5,530	422	8%
50		21	82023 Wilson Lot	4,169	4,813	644	15%
168	84%	21	82010 Cap Square North	35,398	22,664	-12,735	-36%
68	75%	21	82012 Gov East	23,720	14,601	-9,119	-38%
50	66%	21	82011 Overture Center	6,531	4,576	-1,954	-30%
201	59%	21	82016 SS Capitol-Monthly (non-LT Lease)	33,321	16,948	-16,373	-49%
Subtotal-Monthly Permit				135,667	108,513	-27,155	-20%
172		21	82027 Overture Center	15,900	17,146	1,246	8%
50		21	82032 SS Cap-Long Term Lease	0	9,894	9,894	
Subtotal-Long Term Parking Leases				15,900	27,040	11,140	70%
Total-Monthly Parking and Long-Term Agreements				151,568	135,553	-16,015	-11%
Miscellaneous Revenue							
			82134 Operating Lease Payments			0	
			82112 Permits; Property Sales; Other; Construction Meter	214	237	23	11%
Subtotal-Miscellaneous Revenue				214	237	23	11%
Summary-RP3 & Miscellaneous Revenue				6,110	3,444	-2,666	-44%
GRAND TOTALS				1,128,753	1,169,848	41,096	4%

REVENUES 2015 VS 2016 MAY

Variances from budget typically result from one or more of the following factors: changes in the number of spaces in service and/or revenue-generating days; changes in usage levels due to events, weather, price resistance, etc.; changes in length of stay; and projection 'misses.' Such impacts are listed in the right-hand columns for variances of +/- \$1,000 or greater.

	Occ					Change (2016 +/- 2015)	
s	Occ	Days		2015	2016	Amount	Pct
Permits							
			82127 RP3 (Residential Parking Permits)	5,890	6,308	418	7%
			82058 Motorcycle Permits	428	192	-237	-55%
						0	
Total-Permits				6,319	6,500	182	3%
Advertising Revenue							
Attended Facilities							
			82106 Awards and Damages				
			82000 ALL Cashiered Ramps			0	
603	77%	30	82001 Cap Sq North	70,157	84,863	14,707	21%
511	82%	30	82003 Gov East	139,479	160,254	20,776	15%
607	85%	30	82002 Overture Center	103,576	125,187	21,611	21%
530		30	82005 SS Campus-Frances	32,643	36,105	3,462	11%
518	58%	30	82006 SS Campus-Lake	193,157	209,382	16,225	8%
778	50%	30	82007 SS Capitol	130,932	142,059	11,127	8%
Total-Attended Facilities				669,943	757,850	87,907	13%
Meters-Off-Street (non-motorcycle)							
13		25	82055 Blair Lot	591	710	118	20%
8	63%	25	82056 Lot 88 (Munic Bldg)	1,275	651	-624	-49%
241	81%	25	82008 Brayton Lot-Machine	39,879	44,108	4,230	11%
53	43%	25	82053 Buckeye/Lot 58 Multi-Space	13,999	22,468	8,469	60%
		25	Evergreen Lot			0	
23	42%	25	82054 Evergreen Lot Multi-Space	2,240	2,280	40	2%
19	0%	25	82057 Wingra Lot	737	652	-86	-12%
36	13%	25	82052 SS Capitol	4,341	4,158	-183	-4%
Subtotal-Off-Street Meters (non cycle)				63,062	75,026	11,964	19%
51			82058-82071 All Cycles	112	139	27	24%
Total-Off-Street Meters (All)				63,174	75,165	11,991	19%
On-Street Meters							
			82074/82126/82088 On Street Multi-Space, Sngl Space & MobileNow	4,051	5,965	1,915	47%
11	50%	25	82089 Capitol Square Meters	1,481	1,053	-428	-29%
14	35%	25	82075 Capitol Square Multi-Space	2,892	1,967	-925	-32%
49	69%	25	82090 Campus Area	6,704	5,013	-1,691	-25%
140	29%	25	82076 Campus Area Multi-Space	20,407	22,745	2,338	11%
22	85%	25	82091 CCB Area	3,008	3,451	443	15%
72	36%	25	82077 CCB Area Multi-Space	12,438	9,653	-2,785	-22%
84	47%	25	82092 East Washington Area	4,938	5,409	471	10%
10	23%	25	82078 East Washington Area Multi-Space	1,074	1,684	609	57%
39	76%	25	82093 GEF Area	3,644	3,934	290	8%
33	66%	25	82079 GEF Area Multi-Space	7,637	8,368	731	10%
27	65%	25	82094 MATC Area	1,799	1,997	198	11%
75	32%	25	82080 MATC Area Multi-Space	12,678	12,275	-404	-3%
60	46%	25	82095 Meriter Area	4,356	6,063	1,708	39%
67	37%	25	82081 Meriter Area Multi-Space	11,277	11,980	703	6%
16	93%	25	82096 MMB Area	3,558	3,759	201	6%
89	50%	25	82082 MMB Area Multi-Space	12,722	12,503	-219	-2%
123		25	82097 Monroe Area	10,271	9,286	-986	-10%
18		25	82098 Schenks Area	1,063	950	-114	-11%
15	55%	25	82099 State St Area	942	1,941	999	106%
112	37%	25	82085 State St Area Multi-Space	16,283	14,640	-1,643	-10%
115	48%	25	82100 University Area	13,487	12,497	-989	-7%
83	39%	25	82086 University Area Multi-Space	11,879	12,662	783	7%
74	62%	25	82101 Wilson/Butler Area	4,080	4,035	-45	-1%
37	17%	25	82087 Wilson/Butler Area Multi-Space	5,330	5,588	258	5%
Subtotal-On-Street Meters				178,000	179,419	1,419	1%
			82107 Contractor Permits	1,929	2,235	306	16%
			82111 Meter Hoods	32,370	38,125	5,755	18%
				34,299	40,360	6,061	18%
Total-On-Street Meters				212,298	219,779	7,480	4%
Monthly Parking and Long-Term Agreements							
69	76%	21	82020 Brayton Lot	10,396	6,027	-4,370	-42%
88	43%	21	82014 State St Campus	18,330	31,429	13,099	71%
44		21	82018 Blair Lot	5,602	5,133	-469	-8%
50		21	82023 Wilson Lot	4,678	5,176	498	11%
168	77%	21	82010 Cap Square North	35,281	22,497	-12,784	-36%
68	71%	21	82012 Gov East	23,086	13,518	-9,569	-41%
50	63%	21	82011 Overture Center	5,843	4,270	-1,572	-27%
201	63%	21	82016 SS Capitol-Monthly (non-LT Lease)	34,029	25,031	-8,999	-26%
Subtotal-Monthly Permit				137,245	113,081	-24,164	-18%
172		21	82027 Overture Center	16,026	16,922	896	6%
50		21	82032 SS Cap-Long Term Lease	1,483	9,884	8,402	567%
Subtotal-Long Term Parking Leases				17,508	26,806	9,298	53%
Total-Monthly Parking and Long-Term Agreements				154,754	139,887	-14,866	-10%
Miscellaneous Revenue							
			82134 Operating Lease Payments			0	
			82112 Permits; Property Sales; Other; Construction Meter	277	568	291	105%
Subtotal-Miscellaneous Revenue				277	568	291	105%
Summary-RP3 & Miscellaneous Revenue				6,596	7,068	472	7%
GRAND TOTALS				1,106,765	1,199,749	92,984	8%

REVENUES 2015 VS 2016 JUNE

Variances from budget typically result from one or more of the following factors: changes in the number of spaces in service and/or revenue-generating days; changes in usage levels due to events, weather, price resistance, etc.; changes in length of stay; and projection 'misses.' Such impacts are listed in the right-hand columns for variances of +/- \$1,000 or greater.

						Change (2016 +/- 2015)	
s	Occ	Days		2015	2016	Amount	Pct
Permits							
			82127 RP3 (Residential Parking Permits)	4,761	4,759	-3	0%
			82058 Motorcycle Permits	405	213	-192	-47%
						0	
Total-Permits				5,166	4,972	-195	-4%
Advertising Revenue							
Attended Facilities							
			82106 Awards and Damages				
			82000 ALL Cashiered Ramps			0	
603	75%	30	82001 Cap Sq North	78,565	113,337	34,771	44%
511	79%	30	82003 Gov East	150,048	209,098	59,050	39%
607	77%	30	82002 Overture Center	97,740	140,283	42,544	44%
530		30	82005 SS Campus-Frances	43,603	48,105	4,502	10%
518	60%	30	82006 SS Campus-Lake	227,183	274,146	46,963	21%
778	54%	30	82007 SS Capitol	137,055	157,168	20,112	15%
Total-Attended Facilities				734,193	942,136	207,943	28%
Meters-Off-Street (non-motorcycle)							
13		25	82055 Blair Lot	981	1,142	161	16%
8	50%	25	82056 Lot 88 (Munic Bldg)	1,184	652	-532	-45%
241	82%	25	82008 Brayton Lot-Machine	42,203	60,372	18,169	43%
53	44%	25	82053 Buckeye/Lot 58 Multi-Space	16,497	19,272	2,775	17%
		25	Evergreen Lot			0	
23	42%	25	82054 Evergreen Lot Multi-Space	2,190	1,677	-513	-23%
19	0%	25	82057 Wingra Lot	720	660	-60	-8%
36	16%	25	82052 SS Capitol	3,843	3,524	-319	-8%
Subtotal-Off-Street Meters (non cycle)				67,617	87,299	19,682	29%
51			82058-82071 All Cycles	214	217	3	2%
Total-Off-Street Meters (All)				67,831	87,517	19,686	29%
On-Street Meters							
			82074/82126/82088 On Street Multi-Space, Sngl Space & MobileNow	2,471	5,695	3,224	130%
11	100%	25	82089 Capitol Square Meters	1,947	624	-1,323	-68%
14	38%	25	82075 Capitol Square Multi-Space	3,669	1,387	-2,282	-62%
49	66%	25	82090 Campus Area	7,169	7,059	-109	-2%
140	29%	25	82076 Campus Area Multi-Space	16,841	22,210	5,369	32%
22	91%	25	82091 CCB Area	3,972	4,216	244	6%
72	36%	25	82077 CCB Area Multi-Space	13,260	9,401	-3,859	-29%
84	55%	25	82092 East Washington Area	5,341	6,174	834	16%
10	25%	25	82078 East Washington Area Multi-Space	1,196	2,124	928	78%
39	65%	25	82093 GEF Area	3,853	3,782	-72	-2%
33	71%	25	82079 GEF Area Multi-Space	8,051	7,911	-140	-2%
27	66%	25	82094 MATC Area	2,226	2,686	460	21%
75	38%	25	82080 MATC Area Multi-Space	14,702	12,789	-1,913	-13%
60	51%	25	82095 Meriter Area	5,221	6,541	1,320	25%
67	39%	25	82081 Meriter Area Multi-Space	11,412	12,019	607	5%
16	95%	25	82096 MMB Area	5,011	3,734	-1,277	-25%
89	56%	25	82082 MMB Area Multi-Space	14,418	11,638	-2,780	-19%
123		25	82097 Monroe Area	8,955	9,641	686	8%
18		25	82098 Schenks Area	935	1,095	160	17%
15	41%	25	82099 State St Area	1,739	2,065	325	19%
112	39%	25	82085 State St Area Multi-Space	16,264	14,977	-1,286	-8%
115	65%	25	82100 University Area	14,753	15,705	952	6%
83	34%	25	82086 University Area Multi-Space	10,956	9,189	-1,768	-16%
74	67%	25	82101 Wilson/Butler Area	4,217	4,974	757	18%
37	17%	25	82087 Wilson/Butler Area Multi-Space	4,166	5,389	1,223	29%
Subtotal-On-Street Meters				182,744	183,574	829	0%
			82107 Contractor Permits	2,142	2,030	-112	-5%
			82111 Meter Hoods	37,824	32,106	-5,718	-15%
				39,966	34,136	-5,830	-15%
Total-On-Street Meters				222,711	217,709	-5,001	-2%
Monthly Parking and Long-Term Agreements							
69	79%	21	82020 Brayton Lot	11,486	7,994	-3,493	-30%
88	40%	21	82014 State St Campus	21,036	46,774	25,738	122%
44		21	82018 Blair Lot	5,479	8,033	2,554	47%
50		21	82023 Wilson Lot	5,569	5,475	-94	-2%
168	75%	21	82010 Cap Square North	33,196	28,182	-5,013	-15%
68	72%	21	82012 Gov East	23,689	15,633	-8,056	-34%
50	62%	21	82011 Overture Center	5,815	6,155	340	6%
201	56%	21	82016 SS Capitol-Monthly (non-LT Lease)	35,871	17,428	-18,443	-51%
Subtotal-Monthly Permit				142,140	135,673	-6,467	-5%
172		21	82027 Overture Center	15,953	25,911	9,959	62%
50		21	82032 SS Cap-Long Term Lease	1,752	10,729	8,977	512%
Subtotal-Long Term Parking Leases				17,704	36,640	18,936	107%
Total-Monthly Parking and Long-Term Agreements				159,845	172,314	12,469	8%
Miscellaneous Revenue							
			82134 Operating Lease Payments	-316		0	0%
			82112 Permits; Property Sales; Other; Construction Meter	5,100	2,219	-2,881	-56%
Subtotal-Miscellaneous Revenue				4,784	2,219	-2,565	-54%
Summary-RP3 & Miscellaneous Revenue				9,950	7,190	-2,760	-28%
GRAND TOTALS				1,194,530	1,426,866	232,336	19%

REVENUES 2015 VS 2016 JULY

Variances from budget typically result from one or more of the following factors: changes in the number of spaces in service and/or revenue-generating days; changes in usage levels due to events, weather, price resistance, etc.; changes in length of stay; and projection 'misses.' Such impacts are listed in the right-hand columns for variances of +/- \$1,000 or greater.

						Change (2016 +/- 2015)	
s	Occ	Days		2015	2016	Amount	Pct
Permits							
			82127 RP3 (Residential Parking Permits)	1,730	20,308	18,578	1074%
			82058 Motorcycle Permits			0	
						0	
Total-Permits				1,730	20,308	18,578	1074%
Advertising Revenue							
Attended Facilities							
			82106 Awards and Damages				
			82000 ALL Cashiered Ramps			0	
603	69%	30	82001 Cap Sq North	84,930	107,508	22,578	27%
511	71%	30	82003 Gov East	152,168	179,632	27,464	18%
607	68%	30	82002 Overture Center	88,961	106,656	17,695	20%
530		30	82005 SS Campus-Frances	37,444	44,110	6,666	18%
518	67%	30	82006 SS Campus-Lake	201,243	245,175	43,933	22%
778	53%	30	82007 SS Capitol	122,415	132,600	10,186	8%
Total-Attended Facilities				687,160	815,681	128,521	19%
Meters-Off-Street (non-motorcycle)							
13		25	82055 Blair Lot	1,369	982	-387	-28%
8	88%	25	82056 Lot 88 (Munic Bldg)	850	878	28	3%
241	76%	25	82008 Brayton Lot-Machine	49,107	57,549	8,442	17%
53	49%	25	82053 Buckeye/Lot 58 Multi-Space	25,383	22,128	-3,255	-13%
		25	Evergreen Lot			0	
23	45%	25	82054 Evergreen Lot Multi-Space	2,273	1,976	-297	-13%
19	26%	25	82057 Wingra Lot	555	580	25	4%
36	14%	25	82052 SS Capitol	5,886	3,693	-2,192	-37%
Subtotal-Off-Street Meters (non cycle)				85,423	87,786	2,363	3%
51			82058-82071 All Cycles	135	170	35	26%
Total-Off-Street Meters (All)				85,559	87,957	2,398	3%
On-Street Meters							
			82074/82126/82088 On Street Multi-Space, Sngl Space & MobileNow	3,074	4,744	1,669	54%
11	90%	25	82089 Capitol Square Meters	2,288	1,007	-1,281	-56%
14	42%	25	82075 Capitol Square Multi-Space	3,017	1,421	-1,596	-53%
49	69%	25	82090 Campus Area	6,532	7,253	721	11%
140	29%	25	82076 Campus Area Multi-Space	20,938	22,231	1,293	6%
22	74%	25	82091 CCB Area	4,512	3,701	-811	-18%
72	34%	25	82077 CCB Area Multi-Space	14,191	9,011	-5,180	-37%
84	44%	25	82092 East Washington Area	6,829	6,521	-308	-5%
10	25%	25	82078 East Washington Area Multi-Space	2,166	1,556	-610	-28%
39	74%	25	82093 GEF Area	4,444	4,025	-420	-9%
33	66%	25	82079 GEF Area Multi-Space	8,466	7,897	-569	-7%
27	61%	25	82094 MATC Area	2,606	2,240	-366	-14%
75	39%	25	82080 MATC Area Multi-Space	16,607	13,011	-3,596	-22%
60	55%	25	82095 Meriter Area	6,667	7,182	515	8%
67	35%	25	82081 Meriter Area Multi-Space	13,710	11,059	-2,651	-19%
16	91%	25	82096 MMB Area	3,974	5,097	1,123	28%
89	53%	25	82082 MMB Area Multi-Space	15,496	11,915	-3,581	-23%
123		25	82097 Monroe Area	11,589	11,139	-450	-4%
18		25	82098 Schenks Area	1,139	672	-467	-41%
15	59%	25	82099 State St Area	1,174	1,422	248	21%
112	38%	25	82085 State St Area Multi-Space	18,338	15,394	-2,944	-16%
115	71%	25	82100 University Area	15,673	14,702	-971	-6%
83	32%	25	82086 University Area Multi-Space	12,634	8,482	-4,152	-33%
74	52%	25	82101 Wilson/Butler Area	5,371	4,722	-649	-12%
37	15%	25	82087 Wilson/Butler Area Multi-Space	5,892	5,398	-495	-8%
Subtotal-On-Street Meters				207,328	181,801	-25,526	-12%
			82107 Contractor Permits	1,076	777	-299	-28%
			82111 Meter Hoods	26,974	39,786	12,811	47%
				28,050	40,563	12,513	45%
Total-On-Street Meters				235,378	222,364	-13,014	-6%
Monthly Parking and Long-Term Agreements							
69	74%	21	82020 Brayton Lot	12,847	13,034	187	1%
88	36%	21	82014 State St Campus	22,432	42,750	20,318	91%
44		21	82018 Blair Lot	7,213	5,569	-1,644	-23%
50		21	82023 Wilson Lot	6,517	5,882	-634	-10%
168	69%	21	82010 Cap Square North	29,202	23,302	-5,900	-20%
68	66%	21	82012 Gov East	20,558	14,863	-5,696	-28%
50	55%	21	82011 Overture Center	5,773	5,910	137	2%
201	53%	21	82016 SS Capitol-Monthly (non-LT Lease)	35,261	17,262	-17,999	-51%
Subtotal-Monthly Permit				139,802	128,572	-11,230	-8%
172		21	82027 Overture Center	12,720	23,825	11,104	87%
50		21	82032 SS Cap-Long Term Lease	35,250	10,729	-24,521	-70%
Subtotal-Long Term Parking Leases				47,970	34,554	-13,417	-28%
Total-Monthly Parking and Long-Term Agreements				187,773	163,126	-24,647	-13%
Miscellaneous Revenue							
			82134 Operating Lease Payments			0	
			82112 Permits; Property Sales; Other; Construction Meter	461	1,013	552	120%
Subtotal-Miscellaneous Revenue				461	1,013	552	120%
Summary-RP3 & Miscellaneous Revenue				2,191	21,321	19,130	873%
GRAND TOTALS				1,198,059	1,310,448	112,388	9%

REVENUES 2015 VS 2016 AUG

Variances from budget typically result from one or more of the following factors: changes in the number of spaces in service and/or revenue-generating days; changes in usage levels due to events, weather, price resistance, etc.; changes in length of stay; and projection 'misses.' Such impacts are listed in the right-hand columns for variances of +/- \$1,000 or greater.

						Change (2016 +/- 2015)	
s	Occ	Days		2015	2016	Amount	Pct
Permits							
			82127 RP3 (Residential Parking Permits)	39,046	55,008	15,962	41%
			82058 Motorcycle Permits			0	
						0	
Total-Permits				39,046	55,008	15,962	41%
			82106 Awards and Damages				
Advertising Revenue							
Attended Facilities							
			82000 ALL Cashiered Ramps			0	
603	77%	30	82001 Cap Sq North	71,019	104,948	33,929	48%
511	75%	30	82003 Gov East	136,827	201,318	64,492	47%
607	68%	30	82002 Overture Center	85,808	102,216	16,409	19%
530		30	82005 SS Campus-Frances	40,121	47,489	7,368	18%
518	70%	30	82006 SS Campus-Lake	234,140	295,710	61,570	26%
778	56%	30	82007 SS Capitol	101,158	125,187	24,029	24%
Total-Attended Facilities				669,073	876,869	207,797	31%
Meters-Off-Street (non-motorcycle)							
13		25	82055 Blair Lot	1,214	1,343	129	11%
8	75%	25	82056 Lot 88 (Munic Bldg)	1,153	938	-215	-19%
241	79%	25	82008 Brayton Lot-Machine	42,717	57,511	14,795	35%
53	50%	25	82053 Buckeye/Lot 58 Multi-Space	23,938	25,738	1,800	8%
		25	Evergreen Lot			0	
23	46%	25	82054 Evergreen Lot Multi-Space	2,335	2,325	-10	0%
19	11%	25	82057 Wingra Lot	870	669	-200	-23%
36	13%	25	82052 SS Capitol	4,753	3,970	-783	-16%
Subtotal-Off-Street Meters (non cycle)				76,978	92,495	15,517	20%
51			82058-82071 All Cycles	77	147	70	91%
Total-Off-Street Meters (All)				77,055	92,641	15,587	20%
On-Street Meters							
			82074/82126/82088 On Street Multi-Space, Sngl Space & MobileNow	6,302	4,952	-1,350	-21%
11	83%	25	82089 Capitol Square Meters	1,985	2,215	230	12%
14	85%	25	82075 Capitol Square Multi-Space	3,476	3,832	356	10%
49	70%	25	82090 Campus Area	7,871	7,579	-292	-4%
140	35%	25	82076 Campus Area Multi-Space	19,841	29,848	10,007	50%
22	88%	25	82091 CCB Area	3,899	4,508	609	16%
72	36%	25	82077 CCB Area Multi-Space	12,647	10,738	-1,909	-15%
84	47%	25	82092 East Washington Area	5,598	5,705	106	2%
10	33%	25	82078 East Washington Area Multi-Space	2,817	2,287	-530	-19%
39	73%	25	82093 GEF Area	3,962	4,237	275	7%
33	71%	25	82079 GEF Area Multi-Space	7,297	8,490	1,193	16%
27	57%	25	82094 MATC Area	2,279	2,563	284	12%
75	43%	25	82080 MATC Area Multi-Space	16,059	17,053	994	6%
60	55%	25	82095 Meriter Area	5,987	8,356	2,369	40%
67	39%	25	82081 Meriter Area Multi-Space	11,889	12,354	466	4%
16	92%	25	82096 MMB Area	4,047	4,359	312	8%
89	57%	25	82082 MMB Area Multi-Space	14,846	13,841	-1,005	-7%
123		25	82097 Monroe Area	11,323	12,661	1,338	12%
18		25	82098 Schenks Area	866	1,218	352	41%
15	54%	25	82099 State St Area	1,305	2,073	768	59%
112	43%	25	82085 State St Area Multi-Space	17,824	19,269	1,445	8%
115	65%	25	82100 University Area	16,594	19,163	2,569	15%
83	41%	25	82086 University Area Multi-Space	12,306	12,909	603	5%
74	58%	25	82101 Wilson/Butler Area	4,667	4,444	-223	-5%
37	17%	25	82087 Wilson/Butler Area Multi-Space	4,473	5,539	1,066	24%
Subtotal-On-Street Meters				200,160	220,193	20,033	10%
			82107 Contractor Permits	1,055	1,152	96	9%
			82111 Meter Hoods	25,979	36,449	10,470	40%
				27,035	37,601	10,566	39%
Total-On-Street Meters				227,195	257,794	30,599	13%
Monthly Parking and Long-Term Agreements							
69	78%	21	82020 Brayton Lot	9,838	18,844	9,005	92%
88	32%	21	82014 State St Campus	18,399	37,994	19,595	107%
44		21	82018 Blair Lot	5,333	5,452	119	2%
50		21	82023 Wilson Lot	3,955	4,389	435	11%
168	77%	21	82010 Cap Square North	31,241	25,627	-5,614	-18%
68	74%	21	82012 Gov East	19,776	14,512	-5,264	-27%
50	55%	21	82011 Overture Center	5,374	6,434	1,060	20%
201	56%	21	82016 SS Capitol-Monthly (non-LT Lease)	23,914	17,998	-5,915	-25%
Subtotal-Monthly Permit				117,829	131,250	13,421	11%
172		21	82027 Overture Center	9,274	13,422	4,148	45%
50		21	82032 SS Cap-Long Term Lease	9,384	21,208	11,824	126%
Subtotal-Long Term Parking Leases				18,658	34,630	15,972	86%
Total-Monthly Parking and Long-Term Agreements				136,487	165,880	29,392	22%
Miscellaneous Revenue							
			82134 Operating Lease Payments			0	
			82112 Permits; Property Sales; Other; Construction Meter	37,995	3,293	-34,702	-91%
Subtotal-Miscellaneous Revenue				37,995	3,293	-34,702	-91%
Summary-RP3 & Miscellaneous Revenue				77,041	58,301	-18,740	-24%
GRAND TOTALS				1,186,851	1,451,486	264,635	22%

REVENUES 2015 VS 2016 SEPT

Variances from budget typically result from one or more of the following factors: changes in the number of spaces in service and/or revenue-generating days; changes in usage levels due to events, weather, price resistance, etc.; changes in length of stay; and projection 'misses.' Such impacts are listed in the right-hand columns for variances of +/- \$1,000 or greater.

				2015	2016	Change (2016 +/- 2015)	
						Amount	Pct
s	Occ	Days					
Permits							
			82127 RP3 (Residential Parking Permits)	25,210	24,611	-598	-2%
			82058 Motorcycle Permits			0	
						0	
Total-Permits				25,210	24,611	-598	-2%
Advertising Revenue							
Attended Facilities							
			82106 Awards and Damages				
			82000 ALL Cashiered Ramps			0	
603	68%	30	82001 Cap Sq North	89,300	107,177	17,877	20%
511	81%	30	82003 Gov East	162,684	205,556	42,872	26%
607	69%	30	82002 Overture Center	107,705	111,933	4,228	4%
530		30	82005 SS Campus-Frances	41,394	47,914	6,520	16%
518	79%	30	82006 SS Campus-Lake	207,575	260,629	53,054	26%
778	60%	30	82007 SS Capitol	151,560	142,873	-8,688	-6%
Total-Attended Facilities				760,219	876,083	115,865	15%
Meters-Off-Street (non-motorcycle)							
13		25	82055 Blair Lot	1,281	850	-431	-34%
8	63%	25	82056 Lot 88 (Munic Bldg)	1,382	629	-753	-55%
241	79%	25	82008 Brayton Lot-Machine	53,945	64,195	10,250	19%
53	36%	25	82053 Buckeye/Lot 58 Multi-Space	18,305	18,259	-47	0%
		25	Evergreen Lot			0	
23	46%	25	82054 Evergreen Lot Multi-Space	2,657	2,252	-405	-15%
19	0%	25	82057 Wingra Lot	1,104	766	-337	-31%
36	13%	25	82052 SS Capitol	4,622	3,700	-922	-20%
Subtotal-Off-Street Meters (non cycle)				83,296	90,651	7,356	9%
51			82058-82071 All Cycles		123	123	
Total-Off-Street Meters (All)				83,296	90,774	7,478	9%
On-Street Meters							
			82074/82126/82088 On Street Multi-Space, Sngl Space & MobileNow	3,554	4,574	1,021	29%
11	88%	25	82089 Capitol Square Meters	2,314	1,312	-1,003	-43%
14	85%	25	82075 Capitol Square Multi-Space	3,184	2,875	-309	-10%
49	58%	25	82090 Campus Area	5,810	5,579	-231	-4%
140	35%	25	82076 Campus Area Multi-Space	17,373	22,893	5,520	32%
22	92%	25	82091 CCB Area	3,789	3,597	-192	-5%
72	36%	25	82077 CCB Area Multi-Space	9,695	9,346	-350	-4%
84	45%	25	82092 East Washington Area	4,698	6,246	1,548	33%
10	33%	25	82078 East Washington Area Multi-Space	1,480	1,710	230	16%
39	62%	25	82093 GEF Area	3,512	4,381	869	25%
33	71%	25	82079 GEF Area Multi-Space	7,489	7,390	-99	-1%
27	43%	25	82094 MATC Area	1,803	2,360	557	31%
75	43%	25	82080 MATC Area Multi-Space	11,984	11,514	-470	-4%
60	60%	25	82095 Meriter Area	5,846	7,161	1,315	22%
67	39%	25	82081 Meriter Area Multi-Space	11,995	12,047	52	0%
16	93%	25	82096 MMB Area	3,810	3,216	-594	-16%
89	57%	25	82082 MMB Area Multi-Space	12,033	11,561	-472	-4%
123		25	82097 Monroe Area	10,617	11,618	1,001	9%
18		25	82098 Schenks Area	716	1,091	376	53%
15	36%	25	82099 State St Area	1,565	1,583	18	1%
112	43%	25	82085 State St Area Multi-Space	15,406	16,833	1,427	9%
115	55%	25	82100 University Area	16,075	16,254	180	1%
83	41%	25	82086 University Area Multi-Space	11,516	12,845	1,329	12%
74	65%	25	82101 Wilson/Butler Area	4,608	4,751	143	3%
37	17%	25	82087 Wilson/Butler Area Multi-Space	6,154	5,994	-160	-3%
Subtotal-On-Street Meters				177,025	188,732	11,707	7%
			82107 Contractor Permits	1,121	1,607	486	43%
			82111 Meter Hoods	69,560	22,247	-47,313	-68%
				70,681	23,854	-46,827	-66%
Total-On-Street Meters				247,705	212,586	-35,120	-14%
Monthly Parking and Long-Term Agreements							
69	68%	21	82020 Brayton Lot	6,665	10,054	3,388	51%
88	41%	21	82014 State St Campus	27,996	33,836	5,841	21%
44		21	82018 Blair Lot	5,622	6,192	570	10%
50		21	82023 Wilson Lot	5,357	4,700	-657	-12%
168	68%	21	82010 Cap Square North	28,980	23,445	-5,535	-19%
68	67%	21	82012 Gov East	20,207	12,797	-7,411	-37%
50	56%	21	82011 Overture Center	4,745	5,609	864	18%
201	52%	21	82016 SS Capitol-Monthly (non-LT Lease)	36,097	12,497	-23,600	-65%
Subtotal-Monthly Permit				135,985	109,129	-26,856	-20%
172		21	82027 Overture Center	18,665	26,560	7,895	42%
50		21	82032 SS Cap-Long Term Lease		10,729	10,729	
Subtotal-Long Term Parking Leases				18,665	37,289	18,624	100%
Total-Monthly Parking and Long-Term Agreements				154,650	146,418	-8,232	-5%
Miscellaneous Revenue							
			82134 Operating Lease Payments			0	
			82112 Permits; Property Sales; Other; Construction Meter	597	1,054	457	77%
Subtotal-Miscellaneous Revenue				597	1,054	457	77%
Summary-RP3 & Miscellaneous Revenue				25,807	25,665	-141	-1%
GRAND TOTALS				1,271,677	1,351,526	79,849	6%

REVENUES 2015 VS 2016 FEB THRU MAY

Variances from budget typically result from one or more of the following factors: changes in the number of spaces in service and/or revenue-generating days; changes in usage levels due to events, weather, price resistance, etc. changes in length of stay, and projection 'misses.' Such impacts are listed in the right-hand columns for variances of +/- \$1,000 or greater.

s		Occ	Days		2015	2016	Change (2016 +/- 2015)	
							Amount	Pct
Permits								
		82127		RP3 (Residential Parking Permits)	14,629	12,837	-1,791	-12%
		82058		Motorcycle Permits	2,801	2,759	-42	-2%
					0	0	0	
Total-Permits					17,430	15,596	-1,833	-11%
		82106		Awards and Damages	0	0		
Advertising Revenue					0	0		
Attended Facilities					0	0		
		82000		ALL Cashiered Ramps	0	0	0	
603		82001		Cap Sq North	272,475	331,114	58,639	22%
511		82003		Gov East	536,251	596,206	59,955	11%
607		82002		Overture Center	427,496	482,379	54,883	13%
530		82005		SS Campus-Frances	157,878	162,823	4,945	3%
518		82006		SS Campus-Lake	766,319	794,057	27,738	4%
778		82007		SS Capitol	550,548	627,051	76,503	14%
Total-Attended Facilities					2,710,967	2,993,630	282,663	10%
Meters-Off-Street (non-motorcycle)					0	0		
13		82055		Blair Lot	2,268	2,599	330	15%
8		82056		Lot 88 (Munic Bldg)	3,431	2,517	-913	-27%
241		82008		Brayton Lot-Machine	150,308	171,929	21,622	14%
53		82053		Buckeye/Lot 58 Multi-Space	58,539	78,805	20,265	35%
				Evergreen Lot	0	0	0	
23		82054		Evergreen Lot Multi-Space	10,317	10,038	-278	-3%
19		82057		Wingra Lot	3,076	2,683	-393	-13%
36		82052		SS Capitol	15,910	14,941	-969	-6%
Subtotal-Off-Street Meters (non cycle)					243,848	283,512	39,664	16%
					0	0		
51		82058-82071		All Cycles	10,007	8,020	-1,987	-20%
Total-Off-Street Meters (All)					253,856	291,532	37,677	15%
On-Street Meters					0	0		
		82074/82126/82088		On Street Multi-Space, Sngl Space & MobileNow	17,987	19,123	1,136	6%
11		82089		Capitol Square Meters	7,074	4,800	-2,274	-32%
14		82075		Capitol Square Multi-Space	12,717	11,882	-834	-7%
49		82090		Campus Area	22,904	20,413	-2,491	-11%
140		82076		Campus Area Multi-Space	76,300	84,427	8,126	11%
22		82091		CCB Area	13,410	13,997	587	4%
72		82077		CCB Area Multi-Space	47,783	36,879	-10,904	-23%
84		82092		East Washington Area	16,876	16,855	-22	0%
10		82078		East Washington Area Multi-Space	5,519	6,538	1,019	18%
39		82093		GEF Area	13,232	14,500	1,268	10%
33		82079		GEF Area Multi-Space	30,081	32,430	2,349	8%
27		82094		MATC Area	5,902	6,307	405	7%
75		82080		MATC Area Multi-Space	50,452	51,445	994	2%
60		82095		Meriter Area	15,364	19,805	4,441	29%
67		82081		Meriter Area Multi-Space	40,489	45,004	4,515	11%
16		82096		MMB Area	16,642	13,782	-2,860	-17%
89		82082		MMB Area Multi-Space	49,412	42,137	-7,275	-15%
123		82097		Monroe Area	37,150	41,658	4,508	12%
18		82098		Schenks Area	5,035	3,908	-1,127	-22%
15		82099		State St Area	5,895	8,442	2,547	43%
112		82085		State St Area Multi-Space	62,961	61,367	-1,594	-3%
115		82100		University Area	52,515	51,710	-805	-2%
83		82086		University Area Multi-Space	48,519	50,270	1,751	4%
74		82101		Wilson/Butler Area	14,908	13,835	-1,074	-7%
37		82087		Wilson/Butler Area Multi-Space	18,636	18,666	30	0%
Subtotal-On-Street Meters					688,078	690,176	2,098	0%
		82107		Contractor Permits	8,645	7,865	-779	-9%
		82111		Meter Hoods	102,075	119,220	17,145	17%
					110,719	127,085	16,365	15%
Total-On-Street Meters					798,798	817,261	18,463	2%
Monthly Parking and Long-Term Agreements					0	0		
69		82020		Brayton Lot	44,736	39,129	-5,607	-13%
88		82014		State St Campus	67,161	125,890	58,728	87%
44		82018		Blair Lot	23,772	20,954	-2,819	-12%
50		82023		Wilson Lot	19,761	18,925	-836	-4%
168		82010		Cap Square North	147,396	96,231	-51,165	-35%
68		82012		Gov East	99,808	61,378	-38,430	-39%
50		82011		Overture Center	25,719	18,441	-7,278	-28%
201		82016		SS Capitol-Monthly (non-LT Lease)	144,180	78,824	-65,356	-45%
Subtotal-Monthly Permit					572,533	459,772	-112,762	-20%
172		82027		Overture Center	61,873	69,552	7,679	12%
50		82032		SS Cap-Long Term Lease	2,552	39,547	36,995	1450%
Subtotal-Long Term Parking Leases					64,425	109,099	44,674	69%
Total-Monthly Parking and Long-Term Agreements					636,958	568,871	-68,087	-11%
Miscellaneous Revenue					0	0		
		82134		Operating Lease Payments	0	0	0	
		82112		Permits; Property Sales; Other; Construction Meter	656	2,342	1,686	257%
Subtotal-Miscellaneous Revenue					656	2,342	1,686	257%
Summary-RP3 & Miscellaneous Revenue					18,086	17,938	-148	-1%
GRAND TOTALS					4,418,664	4,689,232	270,568	6%

REVENUES 2015 VS 2016 JUNE THRU SEPT

Variances from budget typically result from one or more of the following factors: changes in the number of spaces in service and/or revenue-generating days; changes in usage levels due to events, weather, price resistance, etc.; changes in length of stay; and projection 'misses.' Such impacts are listed in the right-hand columns for variances of +/- \$1,000 or greater.

	Occ					Change (2016 +/- 2015)	
s	Occ	Days		2015	2016	Amount	Pct
Permits							
			82127 RP3 (Residential Parking Permits)	70,747	104,686	33,939	48%
			82058 Motorcycle Permits	405	213	-192	-47%
				0	0	0	
Total-Permits				71,152	104,899	33,747	47%
			82106 Awards and Damages	0	0		
Advertising Revenue							
Attended Facilities							
			82000 ALL Cashiered Ramps	0	0	0	
603			82001 Cap Sq North	323,814	432,970	109,156	34%
511			82003 Gov East	601,727	795,605	193,878	32%
607			82002 Overture Center	380,214	461,089	80,875	21%
530			82005 SS Campus-Frances	162,562	187,618	25,056	15%
518			82006 SS Campus-Lake	870,141	1,075,661	205,520	24%
778			82007 SS Capitol	512,188	557,828	45,639	9%
Total-Attended Facilities				2,850,645	3,510,770	660,125	23%
Meters-Off-Street (non-motorcycle)							
				0	0		
13			82055 Blair Lot	4,845	4,318	-527	-11%
8			82056 Lot 88 (Munic Bldg)	4,569	3,097	-1,471	-32%
241			82008 Brayton Lot-Machine	187,972	239,628	51,656	27%
53			82053 Buckeye/Lot 58 Multi-Space Evergreen Lot	84,122	85,397	1,274	2%
				0	0	0	
23			82054 Evergreen Lot Multi-Space	9,454	8,229	-1,224	-13%
19			82057 Wingra Lot	3,248	2,675	-573	-18%
36			82052 SS Capitol	19,105	14,887	-4,217	-22%
Subtotal-Off-Street Meters (non cycle)				313,314	358,231	44,917	14%
				0	0		
51			82058-82071 All Cycles	426	657	231	54%
Total-Off-Street Meters (All)				313,740	358,889	45,149	14%
On-Street Meters							
				0	0		
			82074/82126/82088 On Street Multi-Space, Sngl Space & MobileNow	15,401	19,965	4,564	30%
11			82089 Capitol Square Meters	8,535	5,158	-3,377	-40%
14			82075 Capitol Square Multi-Space	13,347	9,516	-3,831	-29%
49			82090 Campus Area	27,382	27,471	89	0%
140			82076 Campus Area Multi-Space	74,994	97,182	22,188	30%
22			82091 CCB Area	16,172	16,023	-149	-1%
72			82077 CCB Area Multi-Space	49,793	38,496	-11,297	-23%
84			82092 East Washington Area	22,465	24,646	2,180	10%
10			82078 East Washington Area Multi-Space	7,658	7,677	19	0%
39			82093 GEF Area	15,772	16,424	652	4%
33			82079 GEF Area Multi-Space	31,303	31,688	385	1%
27			82094 MATC Area	8,914	9,850	936	10%
75			82080 MATC Area Multi-Space	59,352	54,368	-4,984	-8%
60			82095 Meriter Area	23,721	29,240	5,518	23%
67			82081 Meriter Area Multi-Space	49,006	47,478	-1,527	-3%
16			82096 MMB Area	16,841	16,405	-436	-3%
89			82082 MMB Area Multi-Space	56,793	48,955	-7,838	-14%
123			82097 Monroe Area	42,483	45,058	2,575	6%
18			82098 Schenks Area	3,655	4,076	421	12%
15			82099 State St Area	5,783	7,143	1,360	24%
112			82085 State St Area Multi-Space	67,832	66,473	-1,358	-2%
115			82100 University Area	63,094	65,824	2,730	4%
83			82086 University Area Multi-Space	47,412	43,424	-3,987	-8%
74			82101 Wilson/Butler Area	18,863	18,891	27	0%
37			82087 Wilson/Butler Area Multi-Space	20,685	22,320	1,635	8%
Subtotal-On-Street Meters				767,257	774,300	7,043	1%
			82107 Contractor Permits	5,394	5,566	172	3%
			82111 Meter Hoods	160,338	130,588	-29,750	-19%
				165,732	136,154	-29,578	-18%
Total-On-Street Meters				932,989	910,454	-22,535	-2%
Monthly Parking and Long-Term Agreements							
				0	0		
69			82020 Brayton Lot	40,837	49,925	9,088	22%
88			82014 State St Campus	89,862	161,354	71,492	80%
44			82018 Blair Lot	23,646	25,246	1,599	7%
50			82023 Wilson Lot	21,397	20,445	-951	-4%
168			82010 Cap Square North	122,619	100,557	-22,063	-18%
68			82012 Gov East	84,231	57,804	-26,427	-31%
50			82011 Overture Center	21,706	24,109	2,402	11%
201			82016 SS Capitol-Monthly (non-LT Lease)	131,143	65,185	-65,957	-50%
Subtotal-Monthly Permit				535,756	504,624	-30,817	-6%
172			82027 Overture Center	56,612	89,718	33,106	58%
50			82032 SS Cap-Long Term Lease	46,386	53,394	7,009	15%
Subtotal-Long Term Parking Leases				102,998	143,112	40,115	39%
Total-Monthly Parking and Long-Term Agreements				638,754	647,736	9,298	1%
Miscellaneous Revenue							
				0	0		
			82134 Operating Lease Payments	-316	0	0	0%
			82112 Permits; Property Sales; Other; Construction Meter	44,152	7,578	-36,574	-83%
Subtotal-Miscellaneous Revenue				43,836	7,578	-36,258	-83%
Summary-RP3 & Miscellaneous Revenue				114,989	112,478	-2,511	-2%
GRAND TOTALS				4,851,117	5,540,326	689,209	14%