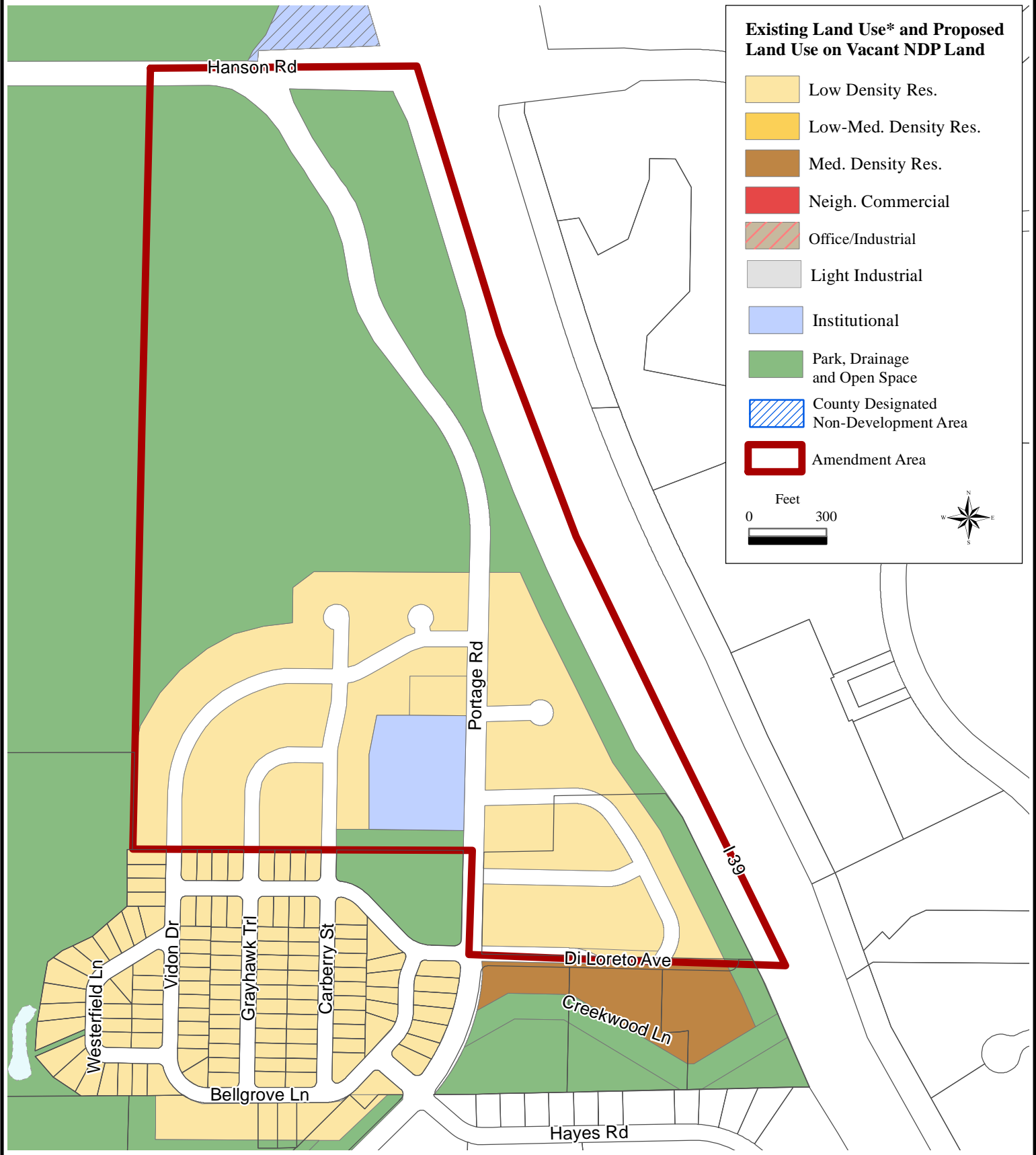
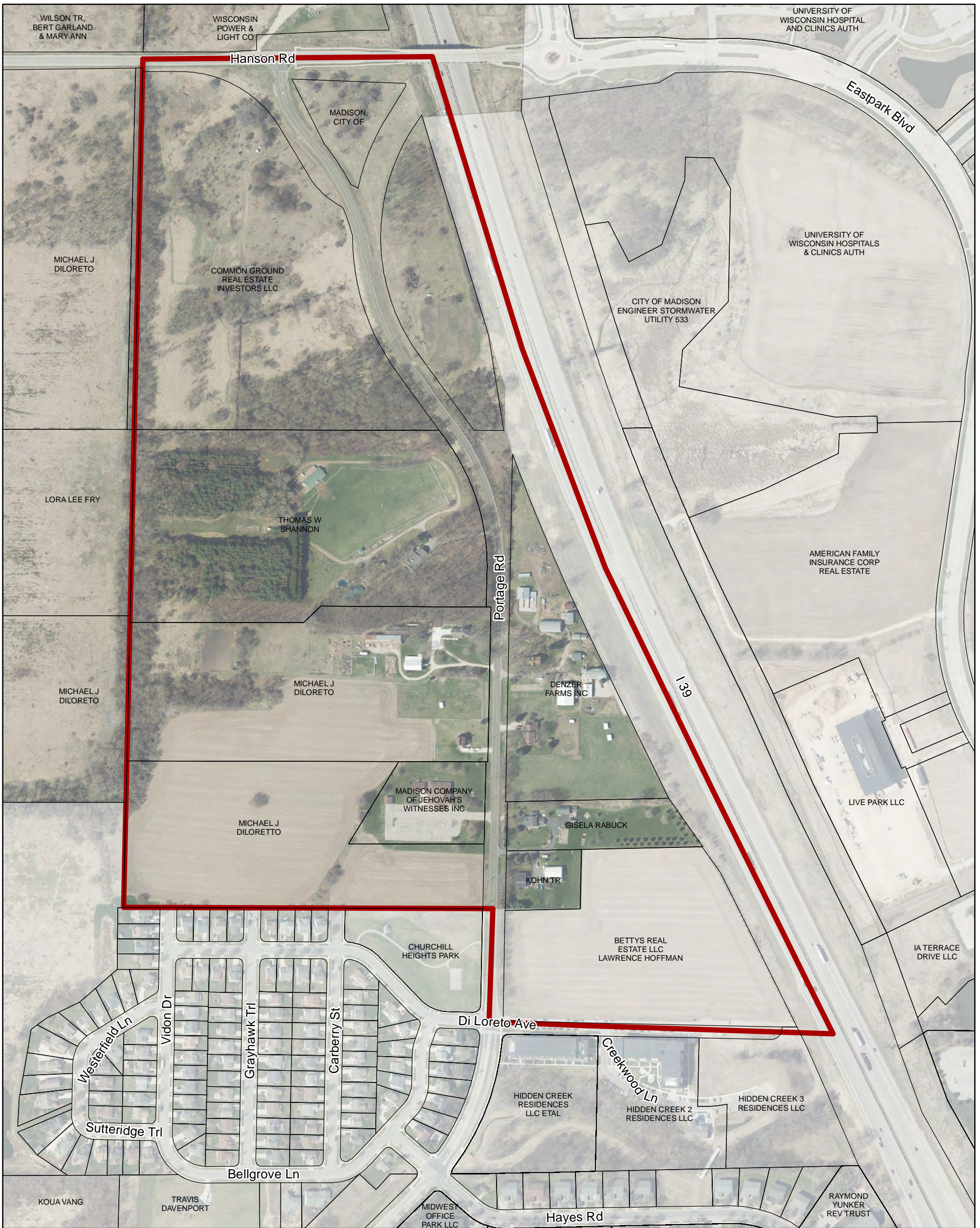


# Hanson Neighborhood Development Plan

As Adopted August 2000 and \*implemented through subdivision and zoning approvals

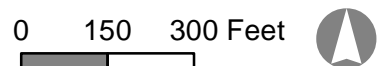


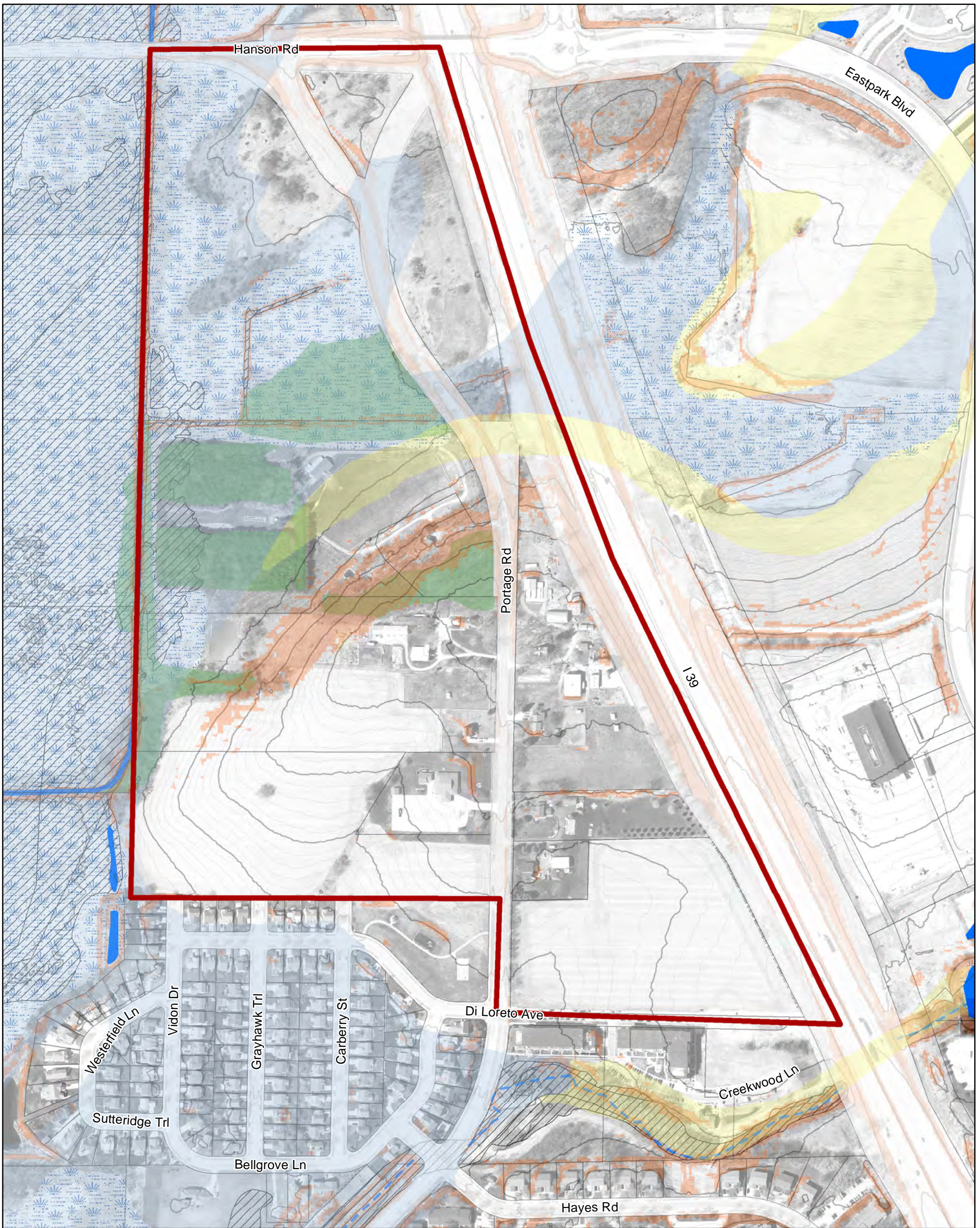


**Map 1: Planning Area and Ownership**  
**Hanson Neighborhood Development Plan - Amendment**

**DRAFT**

- Amendment Area
- City of Madison Boundary

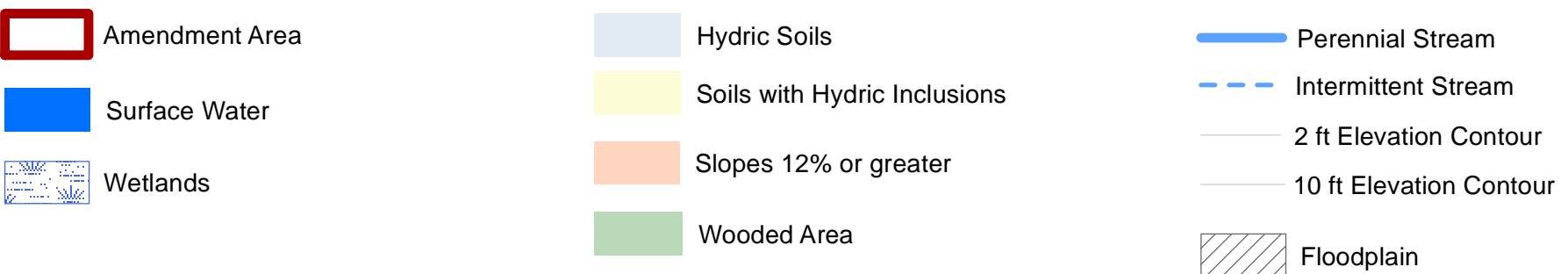




## Map 2: Natural Features

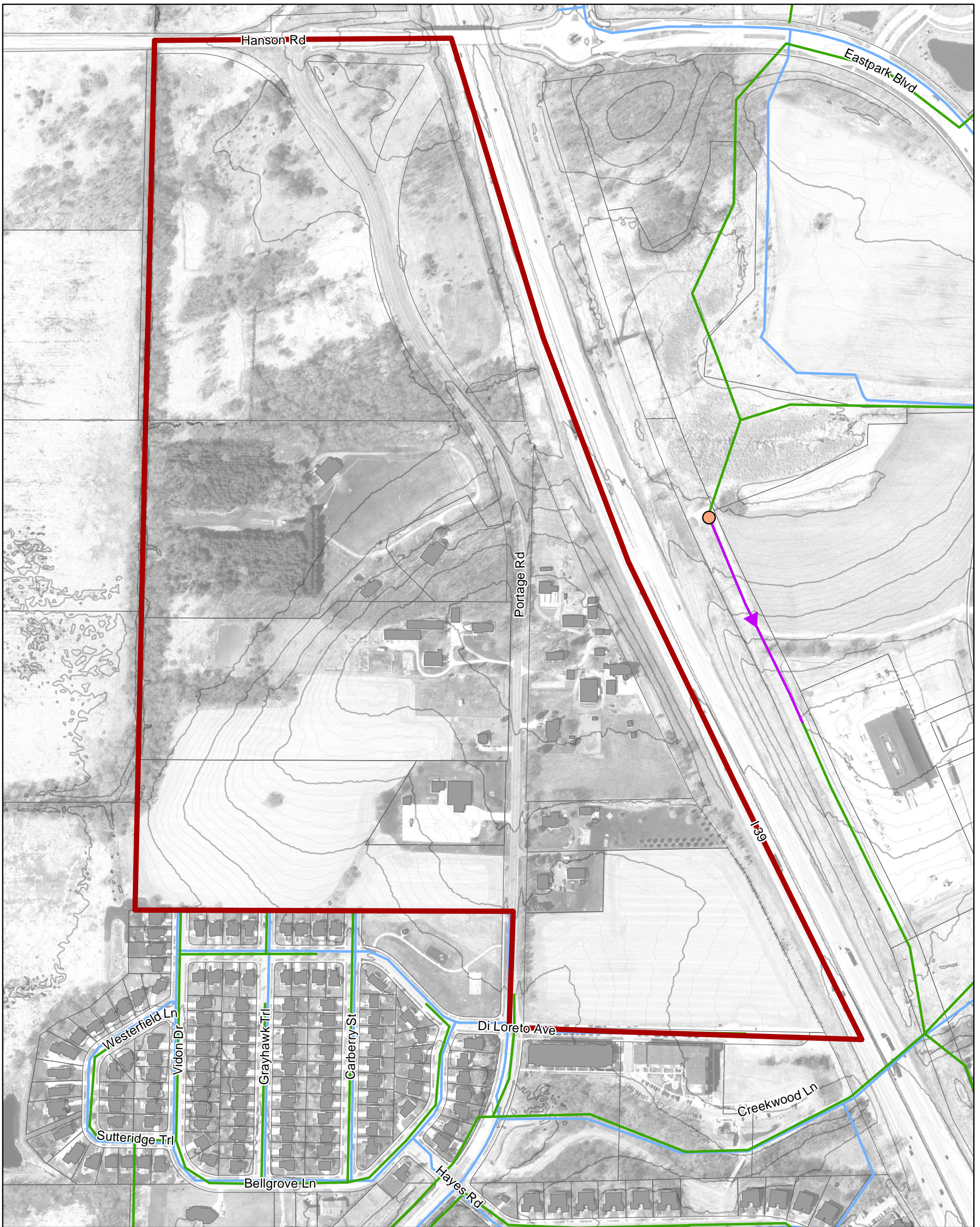
### Hanson Neighborhood Development Plan - Amendment

**DRAFT**



0 150 300 Feet





### Map 3: Utilities

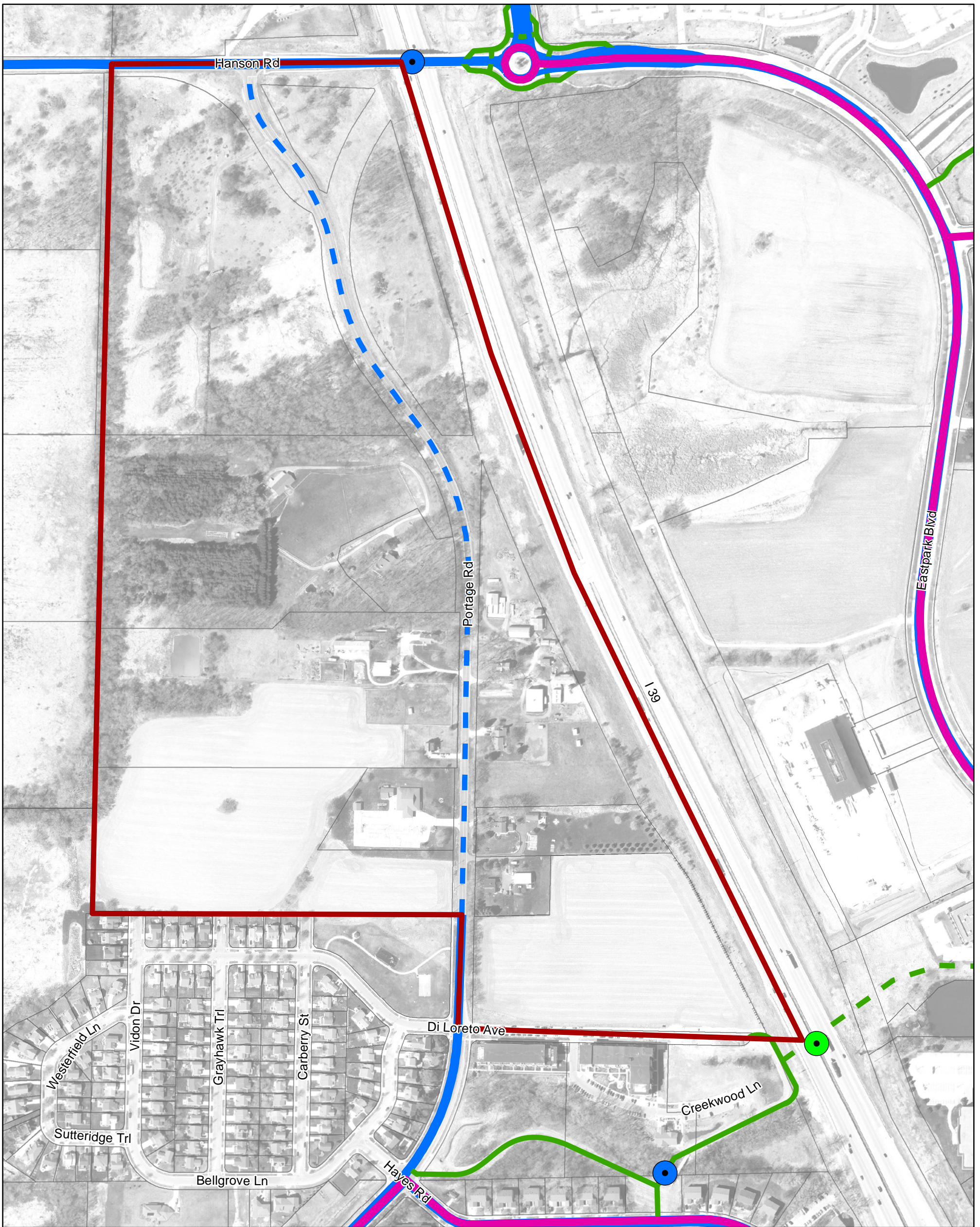
#### Hanson Neighborhood Development Plan - Amendment

**DRAFT**

- Amendment Area
- Water Main
- Sanitary Forcemain
- Sanitary Main
- Sanitary Lift Station

0 150 300 Feet

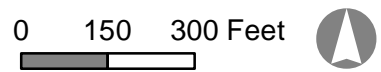


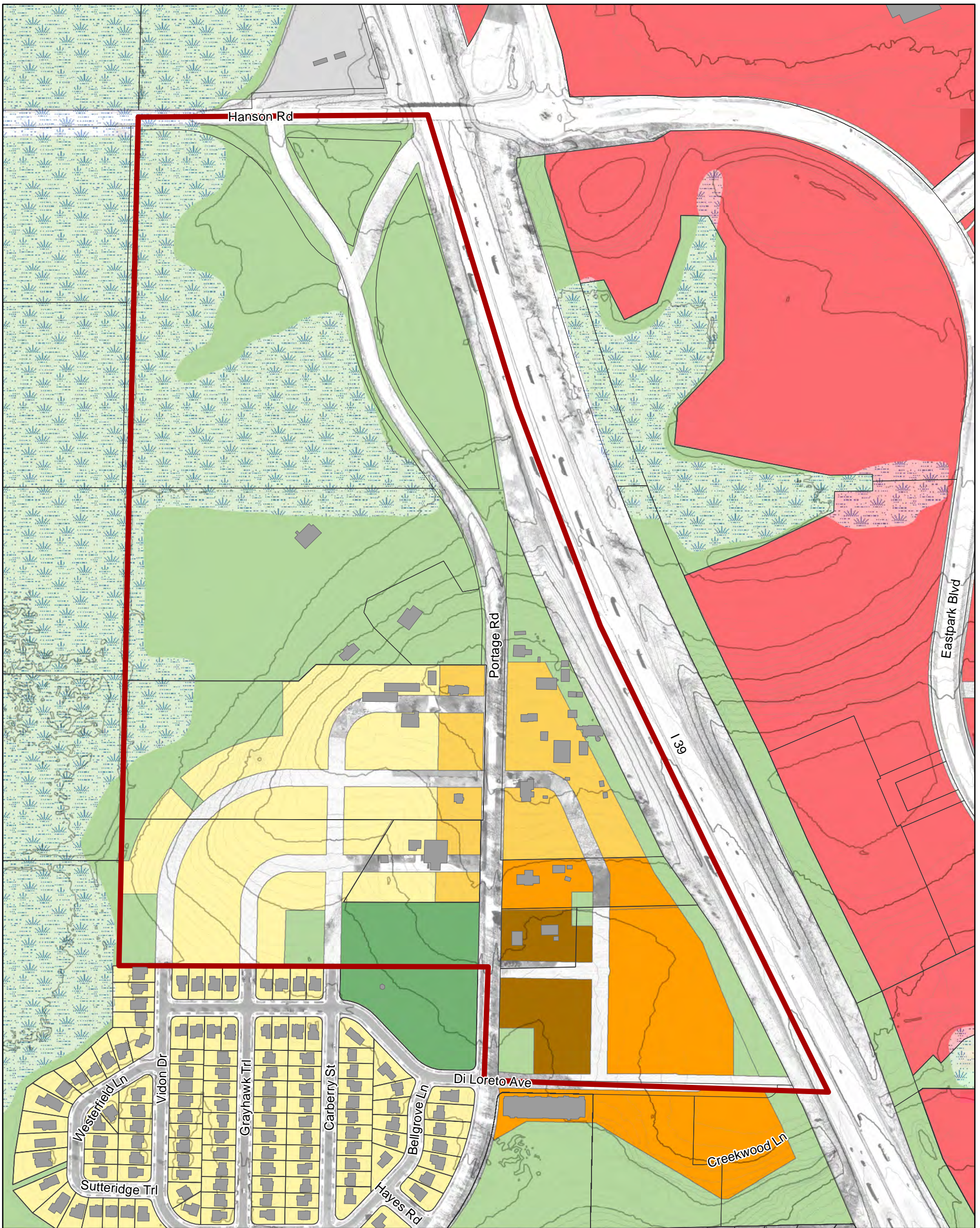


**Map 4: Transportation**  
**Hanson Neighborhood Development Plan - Amendment**

**DRAFT**

- Amendment Area
- Existing Shared-Use Path
- Proposed Shared-Use Path
- Existing On-Street Bicycle Facility
- Proposed On-Street Bicycle Facility
- Bridge Planned - Feasible
- Bridge - Existing
- Metro Transit Routes





**Map 5: Future Land Use and Street Plan**  
**Hanson Neighborhood Development Plan - Amendment**

**DRAFT**

Amendment Area	Housing Mix 1 (0-8 du/ac)	Neighborhood Mixed Use	Park
Housing Mix 2 (8-20 du/ac)	Employment	Stormwater and Other Open Space	
Housing Mix 3 (20-40 du/ac)	Institutional		
Housing Mix 4 (40-70 du/ac)	Utilities		

