



600H X 2.760L 10MM OUTDOOR REAR SERVICE SINGLE-FACE FULL-COLOR DIGITAL VIDEO DISPLAY

ACTIVE AREA: 90"-6 5/8" L X 19'-8 1/4" H X 9 1/4" D,  
12-SHIPPING SECTIONS

POWER: RECOMMENDED CUSTOMER PROVIDED DISCONNECT SIZE:  
DISPLAY POWER CONSUMPTION: 120,685 WATTS  
MULTIPLE 208 VAC, 60 HZ., CONNECTIONS - (1, 1, N, G)  
POWER CONNECTION BETWEEN DISPLAY AND DISCONNECT BOX  
120 VAC AT THE CONTROL LOCATION.

CONTROL CONSOLE: MCTRL4K

LEDS: RGB LED.

ESTIMATED WEIGHT: 19,970 LBS.

GENERAL NOTES:  
\* REFERENCE 01-0500-01 FOR INSTALLATION NOTES.  
\* POWER REQUIREMENTS ARE VALID FOR 90 DAYS AFTER THE ORIGINAL RELEASE OR BY THE MOST RECENT REVISION OF THE DRAWING.

90'-6 5/8"

19'-8 1/4"

600H X 2.760L 10MM OUTDOOR REAR SERVICE SINGLE-FACE FULL-COLOR DIGITAL VIDEO DISPLAY

FACE VIEW

**CUSTOMER APPROVAL:**  
PROJECT: \_\_\_\_\_  
DATE: \_\_\_\_\_  
SIGNATURE: \_\_\_\_\_  
DATE: \_\_\_\_\_

**FAIR-PLAY**

THE DOCUMENT CONTAINS TRADE SECRET INFORMATION AND IS THE PROPERTY OF THE COMPANY. IT IS TO BE KEPT CONFIDENTIAL AND NOT TO BE REPRODUCED OR TRANSMITTED IN ANY FORM OR BY ANY MEANS, ELECTRONIC OR MECHANICAL, INCLUDING PHOTOCOPYING, RECORDING, OR BY ANY INFORMATION STORAGE AND RETRIEVAL SYSTEM. PERMISSION TO COPY OR TO TRANSMIT IN ANY FORM OR BY ANY MEANS, ELECTRONIC OR MECHANICAL, INCLUDING PHOTOCOPYING, RECORDING, OR BY ANY INFORMATION STORAGE AND RETRIEVAL SYSTEM, IS GRANTED BY THE COMPANY TO THE CUSTOMER FOR THE PROJECT IDENTIFIED IN THE TITLE OF THIS DOCUMENT. ALL OTHER RIGHTS ARE RESERVED BY THE COMPANY.

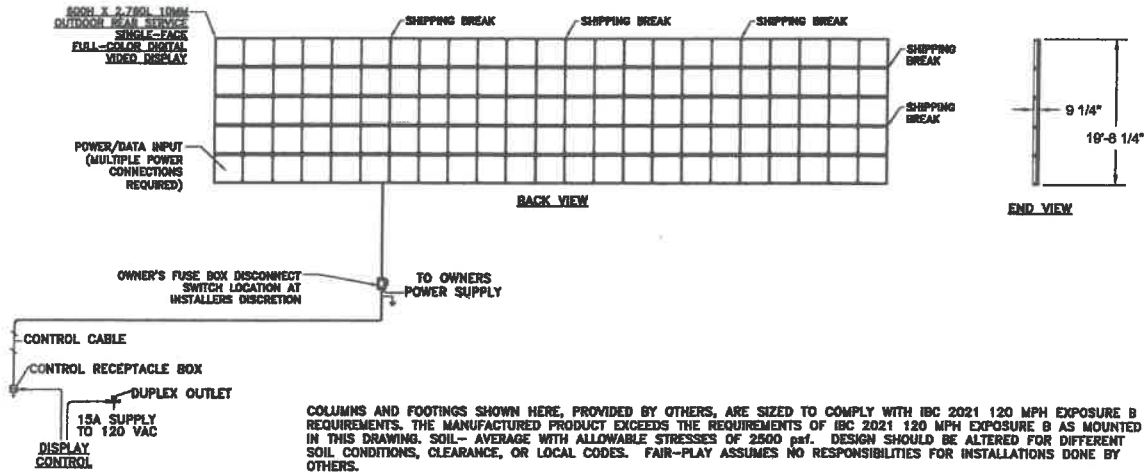
PRINT NAME: \_\_\_\_\_  
DRAWN BY: B  
DATE: 01-24-24  
SCALE: 1/8"=1'-0"  
DWG. NO.: 01-0910-456-1  
MODEL: 10MM

OR	REV. 1	DATE	BY

\* REFERENCE 01-0910-456-2 FOR INSTALLATION,  
01-0910-456-3 FOR POWER/DATA CONNECTION

DIMENSIONS

NOTE: FOOTINGS, COLUMNS, & SPACING TO BE DETERMINED BY LOCAL STRUCTURAL ENGINEER



COLUMNS AND FOOTINGS SHOWN HERE, PROVIDED BY OTHERS, ARE SIZED TO COMPLY WITH IBC 2021 120 MPH EXPOSURE B REQUIREMENTS. THE MANUFACTURED PRODUCT EXCEEDS THE REQUIREMENTS OF IBC 2021 120 MPH EXPOSURE B AS MOUNTED IN THIS DRAWING. SOIL- AVERAGE WITH ALLOWABLE STRESSES OF 2500 psf. DESIGN SHOULD BE ALTERED FOR DIFFERENT SOIL CONDITIONS, CLEARANCE, OR LOCAL CODES. FAIR-PLAY ASSUMES NO RESPONSIBILITIES FOR INSTALLATIONS DONE BY OTHERS.

CONTROL CABLES- SUGGEST 3/4" CONDUIT BE USED FOR BURIED CABLE IN AREAS WHERE IT MAY BE SUBJECT TO MECHANICAL DAMAGE. POWER WIRES SHOULD BE ROUTED IN SEPARATE CONDUIT FROM CONTROL CABLE.

INSTALLATION DRAWING SHOULD BE REVIEWED BY A LICENSED PROFESSIONAL ENGINEER IN YOUR AREA PRIOR TO CONSTRUCTION.

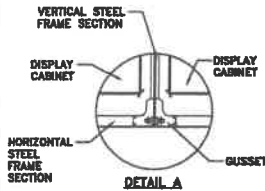
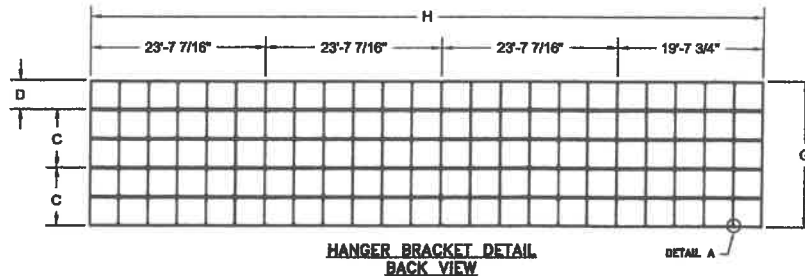
REFERENCE 01-0500-01 FOR INSTALLATION NOTES.

DISPLAY MOUNTING NOTES:

- HORIZONTAL STEEL FRAME SECTIONS ARE 12GA STEEL
- GUSSETS AND VERTICAL STEEL FRAME SECTIONS ARE 14GA STEEL
- INSTALLER CAN WELD OR DRILL HOLES INTO THE STEEL FRAME WHEN MOUNTING THE DISPLAY.

	23'-7 7/16"	23'-7 7/16"	23'-7 7/16"	19'-7 3/4"
3'-11 1/4"	C1	C2	C3	C4
7'-10 1/2"	B1	B2	B3	B4
7'-10 1/2"	A1	A2	A3	A4

SHIPPING SECTION DETAIL  
BACK VIEW



REFERENCE 01-0910-456-1 FOR FACE VIEW,  
01-0910-456-3 FOR POWER/DATA CONNECTION

CUSTOMER APPROVAL: MY SIGNATURE BELOW SIGNIFIES MY APPROVAL TO PROCEED WITH THE DESIGN WORK SPECIFIED HEREIN AND ACKNOWLEDGMENT THAT I HAVE REVIEWED AND READ THE INSTALLATION SPECIFICATIONS CONTAINED IN FAIR-PLAY DOCUMENT NO. 01-0500-01. CONSULT YOUR FAIR-PLAY SALES ASSOCIATE IF YOU SHOULD HAVE ANY QUESTIONS OR REQUIRE ANY CHANGES TO THIS DOCUMENT.

PROJECT: \_\_\_\_\_ SIGNATURE: \_\_\_\_\_ DATE: \_\_\_\_\_

REFERENCE #: \_\_\_\_\_ PRINT NAME: \_\_\_\_\_

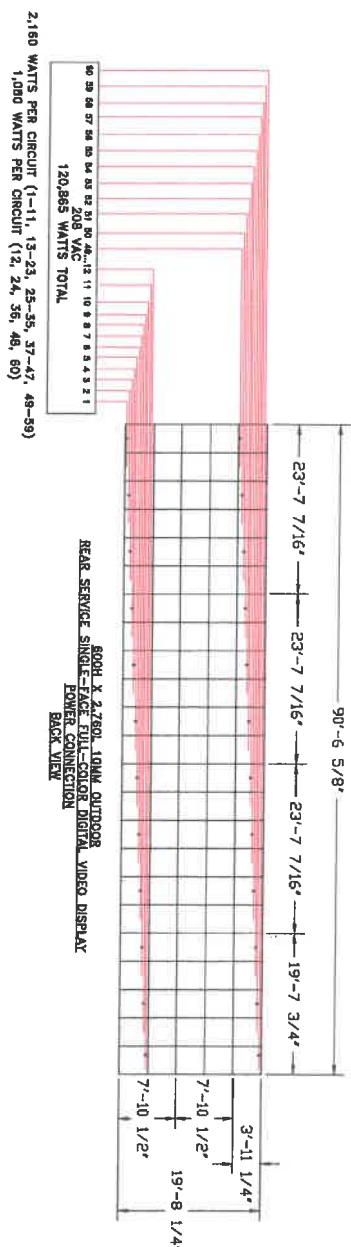
**FAIR-PLAY** THIS DOCUMENT CONTAINS FAIR-PLAY PROPRIETARY INFORMATION. ANY DISCLOSURE, USE OR REPRODUCTION OF THE DOCUMENT OR OF ANY INFORMATION CONTAINED THEREIN FOR OTHER THAN THE SPECIFIC PURPOSE FOR WHICH IT WAS DISCLOSED IS EXPRESSLY PROHIBITED, EXCEPT AS MAY BE OTHERWISE AGREED TO IN WRITING. COPYRIGHT 2022.

TITLE: **INSTALLATION FOR 600H X 2,760L 10MM RS SF OD DISPLAY**

DRAWN BY: BEW  
DATE: 01-04-24  
SCALE: 1/8"=1'-0"

MODEL: B  
10MM  
DWG. NO.: 01-0910-456-2

Cabinet Array(HxW)	5 x 23	Module Array(HxW)	4 x 3
Whole Screen Size(HxW)	6,000mm x 2,760mm	Cabinet Size(HxW)	1,200mm x 1,200mm
# of Cabinets	1	# of Cabinets	115
Whole Screen Resolution(HxW)	600 x 2,760	Cabinet Resolution(HxW)	120 x 120 pixels
Whole Screen Power	120,865 Watts	Max. Cabinet Power	1,080 Watts



18	18	14	13	12	11	10	9	7	6	4	3	2	1
DATA OUT													
18	18	14	13	12	11	10	9	7	6	4	3	2	1
DATA CONNECTION BACK VIEW													
10	15	14	13	12	11	10	9	7	6	4	3	2	1
FIBER													
MCTR4K													

**FAIR-PLAY**

CUSTOMER APPROVAL:

THIS DOCUMENT CONTAINS FAIR-PLAY PROPRIETARY INFORMATION AND REQUIREMENTS. USE OR REPRODUCTION OF THIS DOCUMENT OR OF ANY INFORMATION CONTAINED HEREIN FOR OTHER THAN THE SPECIFIC PURPOSE FOR WHICH IT WAS PROVIDED IS PROHIBITED WITHOUT THE EXPRESS WRITTEN PERMISSION OF FAIR-PLAY SALES ASSOCIATE. ANY QUESTIONS OR REQUESTS FOR CHANGES TO THIS DOCUMENT SHOULD BE REFERRED TO THE SALES ASSOCIATE.

PROJECT: POWER/DATA CONNECTION

DATE: 01-04-24

SCALE: 1/16" = 1'-0"

DWG. NO.: 01-0910-456-3

DESIGNED BY: B

MODEL: 10MM

REVISED BY: RS SF DD DISPLAY

DATE: 01-04-24

SCALE: 1/16" = 1'-0"

DWG. NO.: 01-0910-456-3

• REFERENCE 01-0910-456-1 FOR FACE VIEW,  
01-0910-456-2 FOR INSTALLATION