

NOT FOR CONSTRUCTION

Project Owner
CITY OF MADISON WATER UTILITY
119 E OLIN AVE
MADISON, WI 53713

CITY OF MADISON WATER UTILITY
UNIT WELL 19 TREATMENT SYSTEM ADDITION
2526 LAKE MENDOTA DRIVE
MADISON, WISCONSIN

This drawing is an instrument of service and shall remain the property of Short Elliott Hendrickson, Inc. (SEH). This drawing, concepts and ideas contained herein shall not be used, reproduced, revised, or retained without the express written approval of SEH.
Submission or distribution of this drawing to meet official or regulatory requirements or for purposes in connection with the project is not to be construed as publication in derogation of any of the rights of SEH.
COPYRIGHT © 2022
Short Elliott Hendrickson, Inc.
All Rights Reserved.

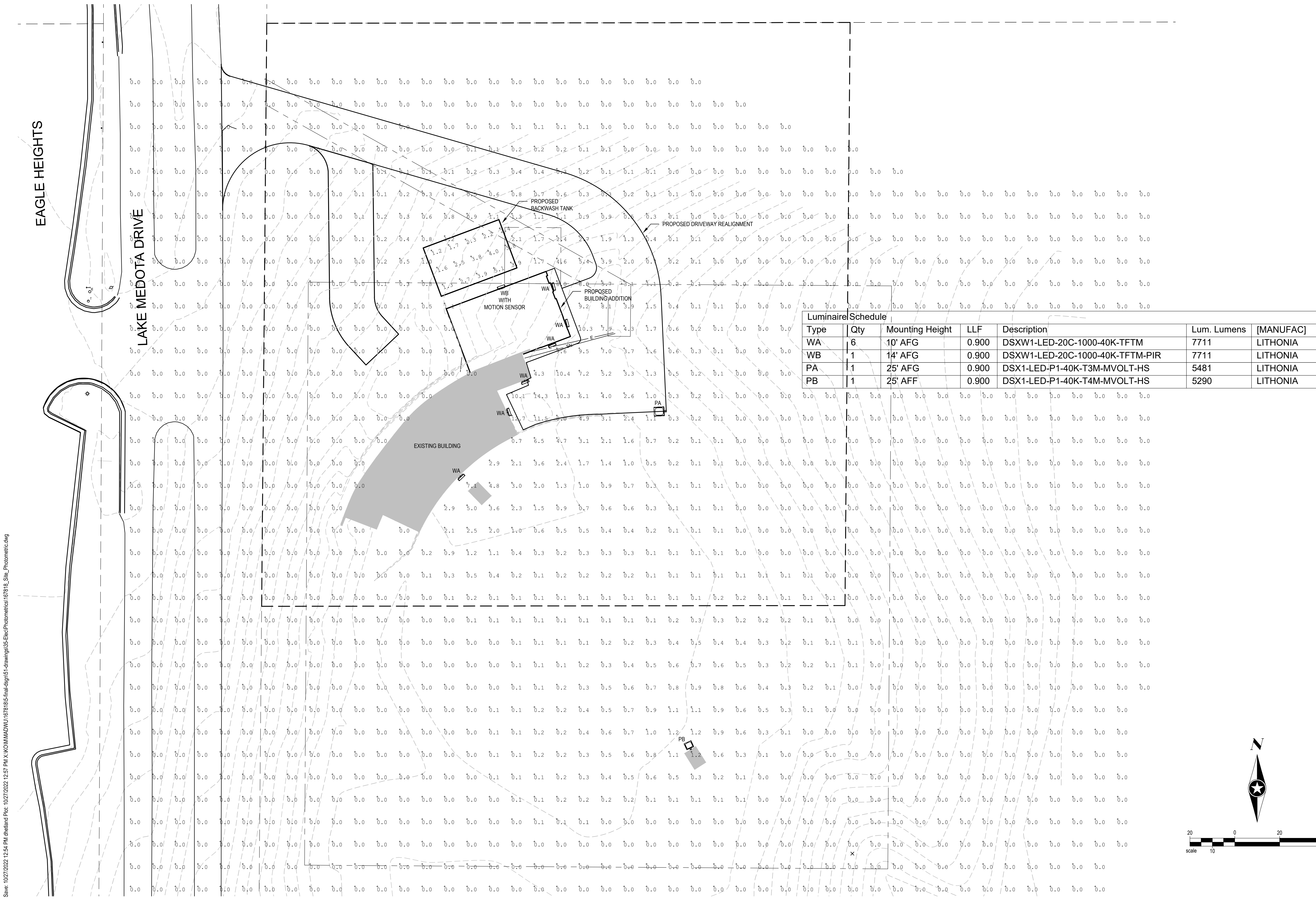
SEH Project MADWU 167818
Checked By DDH
Drawn By DDH

Project Status Issue Date
PLAN COMMISSION SUBMITTAL 10/31/2022

REVISION SCHEDULE
REV. # DESCRIPTION DATE

PHOTOMETRIC PLAN

P001



Luminaire Schedule						
Type	Qty	Mounting Height	LLF	Description	Lum. Lumens	[MANUFAC]
WA	6	10' AFG	0.900	DSXW1-LED-20C-1000-40K-TFTM	7711	LITHONIA
WB	1	14' AFG	0.900	DSXW1-LED-20C-1000-40K-TFTM-PIR	7711	LITHONIA
PA	1	25' AFG	0.900	DSX1-LED-P1-40K-T3M-MVOLT-HS	5481	LITHONIA
PB	1	25' AFF	0.900	DSX1-LED-P1-40K-T4M-MVOLT-HS	5290	LITHONIA

1
P001
PHOTOMETRIC PLAN
SCALE: 1"=20'

Save: 10/27/2022 12:54 PM theland Plot: 10/27/2022 12:57 PM X:\KOMMADWU\167818\5-final-dsp\51-drawings\55-Elect\Photometrics\167818_Site_Photometric.dwg



D-Series Size 1 LED Wall Luminaire

Catalog Number	DSXW1-LED-20C-1000-40K-TFTM-MVOLT
Notes	
Type	WA

d'series

Specifications Luminaire

Width: 13-3/4" (34.9 cm)
Depth: 10" (25.4 cm)
Height: 6-3/8" (16.2 cm)

Weight: 12 lbs (5.4 kg)

Back Box (BBW, E20WC)

Width: 13-3/4" (34.9 cm)
Depth: 4" (10.2 cm)
Height: 6-3/8" (16.2 cm)

BBW Weight: 5 lbs (2.3 kg)
E20WC Weight: 10 lbs (4.5 kg)



Introduction

The D-Series Wall luminaire is a stylish, fully integrated LED solution for building-mount applications. It features a sleek, modern design and is carefully engineered to provide long-lasting, energy-efficient lighting with a variety of optical and control options for customized performance. With an expected service life of over 20 years of nighttime use and up to 74% in energy savings over comparable 250W metal halide luminaires, the D-Series Wall is a reliable, low-maintenance lighting solution that produces sites that are exceptionally illuminated.

Ordering Information

EXAMPLE: DSXW1 LED 20C 1000 40K T3M MVOLT DDBTXD

Series	LEDs	Drive Current	Color temperature	Distribution	Voltage	Mounting	Control Options
DSXW1 LED	10C 10 LEDs (one engine) 20C 20 LEDs (two engines) ¹²	350 350 mA 530 530 mA 700 700 mA (1 A) ¹¹ 1000 1000 mA (1 A) ¹¹	30K 3000 K 40K 4000 K 50K 5000 K AMPC Amber phosphor converted	T2S Type II Short T2M Type II Medium T3S Type III Short T3M Type III Medium T4M Type IV Medium T4M Forward Throw Medium TFTM	MVOLT ¹ 120 ¹ 208 ¹ 240 ¹ 277 ¹ 347 ¹ 480 ¹	Shipped included (blank) Surface mounting bracket BBW Surface-mounted back box (for conduit entry) PBHFCV Motion/ambient sensor, 8-15' mounting height, ambient sensor enabled at 16' ¹² PBHFCV Motion/ambient sensor, 15-30' mounting height, ambient sensor enabled at 16' ¹² E20WC Emergency battery backup (includes external component enclosure, CA title 20 compliant) ¹³	Shipped installed PE Photoelectric cell, button type ⁴ DMG 0-10v dimming wires pulled outside fixture (for use with an external control, ordered separately) ¹⁴ PIR 180° motion/ambient light sensor, <15' mtg ht. ¹⁵ PIRH 180° motion/ambient light sensor, 15-30' mtg ht. ¹⁵ PIRHFCV Motion/ambient sensor, 8-15' mounting height, ambient sensor enabled at 16' ¹² PIRHFCV Motion/ambient sensor, 15-30' mounting height, ambient sensor enabled at 16' ¹² E20WC Emergency battery backup (includes external component enclosure, CA title 20 compliant) ¹³

Other Options	Finish (optional)
Shipped installed SF Single face (120, 277 or 347V) ^{1,8} DF Double face (208, 240 or 480V) ^{1,8} HS House-side shield ¹¹ SPD Separate surge protection ¹²	Dark bronze DDBKD Black DBLKD Natural aluminum DNAXD White DWAHD
Shipped separately ¹¹ BSW Bird-deterrent spikes VG Vandal guard DDL Diffused drop lens	DSSXD Sandstone DBSTXD Textured dark bronze DBLXD Textured black DNATXD Textured natural aluminum DWHGD Textured white DSSTXD Textured sandstone

Accessories	Notes
DSXW1U House-side shield (see per light engine) DSXW1V Bird-deterrent spikes DSXW1W Vandal guard accessory	1. 20C 1000 is not available with PIR, PIRH, PIRHFCV or PBHFCV. 2. MVOLT driver operates on any line voltage from 120-277V (50/60 Hz). 3. Single face (SF) requires 120, 277 or 347 voltage option. Double face (DF) requires 208, 240 or 480 voltage option. 4. Only available with 20C, 700mA or 1000mA. Not available with PIR or PIRH. 5. Back box ships installed on fixture. Cannot be field installed. Cannot be ordered as an accessory. 6. Photocontrol (PE) requires 120, 208, 240, 277 or 347 voltage option. Not available with motion/ambient light sensors (PIR or PIRH). 7. Reference Motion Sensor table on page 3. 8. Same as old ELCV. Cold weather (20C) rated. Not compatible with conduit entry applications. Not available with BBW mounting option. Not available with 347 or 480 voltage options. Emergency components located in back box housing. Emergency mode IES files located on product page at www.lithonia.com . 9. Not available with SPD. 10. Not available with E20WC. 11. Also available as a separate accessory; see Accessories information. 12. Not available with E20WC.



D-Series Size 1 LED Wall Luminaire

Catalog Number	DSXW1-LED-20C-1000-40K-TFTM-MVOLT-PIR
Notes	INSTALL WITH MOTION SENSOR
Type	WB

d'series

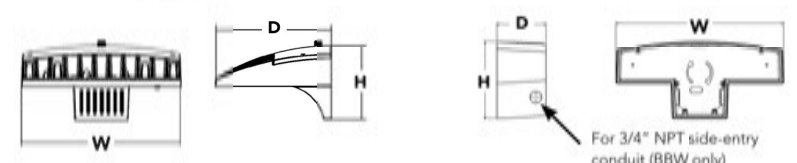
Specifications Luminaire

Width: 13-3/4" (34.9 cm)
Depth: 10" (25.4 cm)
Height: 6-3/8" (16.2 cm)

Weight: 12 lbs (5.4 kg)

Back Box (BBW, E20WC)

Width: 13-3/4" (34.9 cm)
Depth: 4" (10.2 cm)
Height: 6-3/8" (16.2 cm)



Introduction

The D-Series Wall luminaire is a stylish, fully integrated LED solution for building-mount applications. It features a sleek, modern design and is carefully engineered to provide long-lasting, energy-efficient lighting with a variety of optical and control options for customized performance. With an expected service life of over 20 years of nighttime use and up to 74% in energy savings over comparable 250W metal halide luminaires, the D-Series Wall is a reliable, low-maintenance lighting solution that produces sites that are exceptionally illuminated.

Ordering Information

EXAMPLE: DSXW1 LED 20C 1000 40K T3M MVOLT DDBTXD

Series	LEDs	Drive Current	Color temperature	Distribution	Voltage	Mounting	Control Options
DSXW1 LED	10C 10 LEDs (one engine) 20C 20 LEDs (two engines) ¹²	350 350 mA 530 530 mA 700 700 mA (1 A) ¹¹ 1000 1000 mA (1 A) ¹¹	30K 3000 K 40K 4000 K 50K 5000 K AMPC Amber phosphor converted	T2S Type II Short T2M Type II Medium T3S Type III Short T3M Type III Medium T4M Type IV Medium T4M Forward Throw Medium TFTM	MVOLT ¹ 120 ¹ 208 ¹ 240 ¹ 277 ¹ 347 ¹ 480 ¹	Shipped included (blank) Surface mounting bracket BBW Surface-mounted back box (for conduit entry) PIR 180° motion/ambient light sensor, <15' mtg ht. ¹⁵ PIRH 180° motion/ambient light sensor, 15-30' mtg ht. ¹⁵ PIRHFCV Motion/ambient sensor, 8-15' mounting height, ambient sensor enabled at 16' ¹² PIRHFCV Motion/ambient sensor, 15-30' mounting height, ambient sensor enabled at 16' ¹² E20WC Emergency battery backup (includes external component enclosure, CA title 20 compliant) ¹³	Shipped installed PE Photoelectric cell, button type ⁴ DMG 0-10v dimming wires pulled outside fixture (for use with an external control, ordered separately) ¹⁴ PIR 180° motion/ambient light sensor, <15' mtg ht. ¹⁵ PIRH 180° motion/ambient light sensor, 15-30' mtg ht. ¹⁵ PIRHFCV Motion/ambient sensor, 8-15' mounting height, ambient sensor enabled at 16' ¹² PIRHFCV Motion/ambient sensor, 15-30' mounting height, ambient sensor enabled at 16' ¹² E20WC Emergency battery backup (includes external component enclosure, CA title 20 compliant) ¹³

Other Options	Finish (optional)
Shipped installed SF Single face (120, 277 or 347V) ^{1,8} DF Double face (208, 240 or 480V) ^{1,8} HS House-side shield ¹¹ SPD Separate surge protection ¹²	Dark bronze DDBKD Black DBLKD Natural aluminum DNAXD White DWAHD
Shipped separately ¹¹ BSW Bird-deterrent spikes VG Vandal guard DDL Diffused drop lens	DSSXD Sandstone DBSTXD Textured dark bronze DBLXD Textured black DNATXD Textured natural aluminum DWHGD Textured white DSSTXD Textured sandstone

Accessories	Notes
DSXW1U House-side shield (see per light engine) DSXW1V Bird-deterrent spikes DSXW1W Vandal guard accessory	1. 20C 1000 is not available with PIR, PIRH, PIRHFCV or PBHFCV. 2. MVOLT driver operates on any line voltage from 120-277V (50/60 Hz). 3. Single face (SF) requires 120, 277 or 347 voltage option. Double face (DF) requires 208, 240 or 480 voltage option. 4. Only available with 20C, 700mA or 1000mA. Not available with PIR or PIRH. 5. Back box ships installed on fixture. Cannot be field installed. Cannot be ordered as an accessory. 6. Photocontrol (PE) requires 120, 208, 240, 277 or 347 voltage option. Not available with motion/ambient light sensors (PIR or PIRH). 7. Reference Motion Sensor table on page 3. 8. Same as old ELCV. Cold weather (20C) rated. Not compatible with conduit entry applications. Not available with BBW mounting option. Not available with 347 or 480 voltage options. Emergency components located in back box housing. Emergency mode IES files located on product page at www.lithonia.com . 9. Not available with SPD. 10. Not available with E20WC. 11. Also available as a separate accessory; see Accessories information. 12. Not available with E20WC.



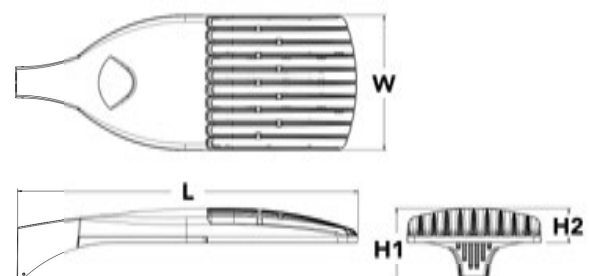
D-Series Size 1 Legacy LED Area Luminaire

Catalog Number	DSX1-LED-P1-40K-T3M-MVOLT-HS
Notes	
Type	PA

d'series

Specifications

EPA: 1.01 ft² (0.09 m²)
Length: 33" (83.8 cm)
Width: 13" (33.0 cm)
Height H1: 7-1/2" (19.0 cm)
Height H2: 3-1/2" (9.1 cm)
Weight (max): 27 lbs (12.2 kg)



Introduction

The modern styling of the D-Series is striking yet unobtrusive - making a bold, progressive statement even as it blends seamlessly with its environment. The D-Series distills the benefits of the latest in LED technology into a high performance, high efficacy, long-life luminaire. The outstanding photometric performance results in sites with excellent uniformity, greater pole spacing and lower power density. It is ideal for replacing up to 750W metal halide in pedestrian and area lighting applications with typical energy savings of 65% and expected service life of over 100,000 hours.

Ordering Information

EXAMPLE: DSX1 LED P7 40K T3M MVOLT SPA NLTAIR2 PIRHN DDBXD G1

Series	LEDs	Color temperature	Distribution	Voltage	Mounting
DSX1 LED	Forward optics P1 P1 P1 P7 P2 P5 P8 P3 P6 P9	30K 3000 K 40K 4000 K 50K 5000 K	T1S Type I short (Automotive) T2S Type II short T3S Type III short T3S Type III short T3M Type III medium T4M Type IV medium TFTM Forward throw medium	MVOLT ¹ XVOLT (277V-480V) ^{1,8} 120 ¹ 208 ¹ 240 ¹ 277 ¹ 347 ¹ 480 ¹	SPA Square pole mounting RPA Round pole mounting ¹¹ WBA Wall bracket ¹¹ SPUMBA Square pole universal mounting adapter ¹¹ RPUMBA Round pole universal mounting adapter ¹¹ KMAA DDBXD U Mast arm mounting bracket adaptor (specify finish) ¹¹

Control options	Other options	Finish (optional)	Generation (required)
NLTAIR2 Eight-tilt generation 2 enabled ¹¹ PIRHN Network, high-flow motion/ambient sensor ¹⁵ PIR NEMA two-lock reposition-in-only control, ordered separately ¹¹ PIRS Five-pin reposition-in-only (controls ordered separately) ¹¹ PER7 Seven-pin reposition-in-only (controls ordered separately) ¹¹ DMG 0-10v dimming wires pulled outside fixture (for use with an external control, ordered separately) ¹⁴ DS Dual switching ^{10,12}	PIR High-flow, motion/ambient sensor, 8-15' mounting height, ambient sensor enabled at 16' ¹² PIRH High-flow, motion/ambient sensor, 15-30' mounting height, ambient sensor enabled at 16' ¹² PIRHFCV High-flow, motion/ambient sensor, 8-15' mounting height, ambient sensor enabled at 16' ¹² PIRHFCV Bi-level, motion/ambient sensor, 15-30' mounting height, ambient sensor enabled at 16' ¹² FAO Field adjustable output ^{10,12}	Dark bronze DDBKD Black DBLKD Natural aluminum DNAXD White DWAHD Textured dark bronze DDBTXD Textured black DBLXD Textured natural aluminum DNATXD Textured white DWHGD	G1 Generation 1



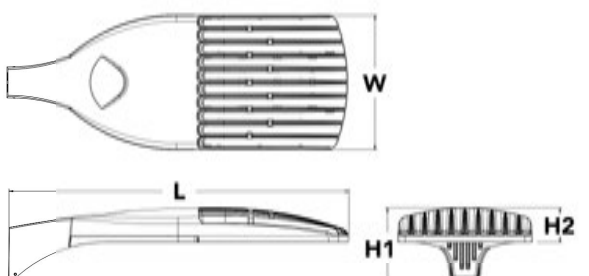
D-Series Size 1 Legacy LED Area Luminaire

Catalog Number	DSX1-LED-P1-40K-T4M-MVOLT-HS
Notes	
Type	PB

d'series

Specifications

EPA: 1.01 ft² (0.09 m²)
Length: 33" (83.8 cm)
Width: 13" (33.0 cm)
Height H1: 7-1/2" (19.0 cm)
Height H2: 3-1/2" (9.1 cm)
Weight (max): 27 lbs (12.2 kg)



Introduction

The modern styling of the D-Series is striking yet unobtrusive - making a bold, progressive statement even as it blends seamlessly with its environment. The D-Series distills the benefits of the latest in LED technology into a high performance, high efficacy, long-life luminaire. The outstanding photometric performance results in sites with excellent uniformity, greater pole spacing and lower power density. It is ideal for replacing up to 750W metal halide in pedestrian and area lighting applications with typical energy savings of 65% and expected service life of over 100,000 hours.

Ordering Information

EXAMPLE: DSX1 LED P7 40K T3M MVOLT SPA NLTAIR2 PIRHN DDBXD G1

Series	LEDs	Color temperature	Distribution	Voltage	Mounting
DSX1 LED	Forward optics P1 P1 P1 P7 P2 P5 P8 P3 P6 P9	30K 3000 K 40K 4000 K 50K 5000 K	T1S Type I short (Automotive) T2S Type II short T3S Type III short T3S Type III short T3M Type III medium T4M Type IV medium TFTM Forward throw medium	MVOLT ¹ XVOLT (277V-480V) ^{1,8} 120 ¹ 208 ¹ 240 ¹ 277 ¹ 347 ¹ 480 ¹	SPA Square pole mounting RPA Round pole mounting ¹¹ WBA Wall bracket ¹¹ SPUMBA Square pole universal mounting adapter ¹¹ RPUMBA Round pole universal mounting adapter ¹¹ KMAA DDBXD U Mast arm mounting bracket adaptor (specify finish) ¹¹

Control options	Other options	Finish (optional)	Generation (required)
NLTAIR2 Eight-tilt generation 2 enabled ¹¹ PIRHN Network, high-flow motion/ambient sensor ¹⁵ PIR NEMA two-lock reposition-in-only control, ordered separately ¹¹ PIRS Five-pin reposition-in-only (controls ordered separately) ¹¹ PER7 Seven-pin reposition-in-only (controls ordered separately) ¹¹ DMG 0-10v dimming wires pulled outside fixture (for use with an external control, ordered separately) ¹⁴ DS Dual switching ^{10,12}	PIR High-flow, motion/ambient sensor, 8-15' mounting height, ambient sensor enabled at 16' ¹² PIRH High-flow, motion/ambient sensor, 15-30' mounting height, ambient sensor enabled at 16' ¹² PIRHFCV High-flow, motion/ambient sensor, 8-15' mounting height, ambient sensor enabled at 16' ¹² PIRHFCV Bi-level, motion/ambient sensor, 15-30' mounting height, ambient sensor enabled at 16' ¹² FAO Field adjustable output ^{10,12}	Dark bronze DDBKD Black DBLKD Natural aluminum DNAXD White DWAHD Textured dark bronze DDBTXD Textured black DBLXD Textured natural aluminum DNATXD Textured white DWHGD	G1 Generation 1



NOT FOR CONSTRUCTION

Project Owner
 CITY OF MADISON WATER UTILITY
 119 E OLIN AVE
 MADISON, WI 53713

CITY OF MADISON WATER UTILITY
 UNIT WELL 19 TREATMENT SYSTEM ADDITION
 2526 LAKE MENDOTA DRIVE
 MADISON, WISCONSIN

This drawing is an instrument of service and shall remain the property of Short Elliott Hendrickson, Inc. (SEH). The drawing, concepts and ideas contained herein shall not be used, reproduced, copied or retained without the express written approval of SEH.
 Submission or distribution of this drawing to meet official or regulatory requirements or for purposes in connection with the project is not to be construed as publication in derogation of any of the rights of SEH.

SEH Project MADWU 167818
 Checked By DDH
 Drawn By DDH

Project Status Issue Date
 PLAN COMMISSION SUBMITTAL 10/31/2022

REVISION SCHEDULE
 REV. # DESCRIPTION DATE

LIGHT FIXTURE CUTSHEETS

P002