



# WOODMAN'S MARKETS

## EMPLOYEE OWNED

### GAS & LUBE

3817 MILWAUKEE STREET  
MADISON, WI 53714

#### SHEET INDEX

- X EXTERIOR FINISH KEYS
- 1 GAS & LUBE ELEVATIONS
- 2 GAS & LUBE ELEVATIONS AND SIGNAGE
- 3 GAS & LUBE PERSPECTIVES
- 4 FUEL CANOPY ELEVATIONS AND SIGNAGE
- 5 FUEL CANOPY PERSPECTIVE
- 6 CAR WASH ELEVATIONS AND SIGNAGE
- 7 CAR WASH PERSPECTIVES
- 8 MONUMENT SIGN ELEVATIONS AND PERSPECTIVES
- 9 ENLARGED SIGNAGE
- 10 ENLARGED SIGNAGE
- 11 EXISTING BILLBOARD PERSPECTIVES
- 12 IMPROVED PEDESTRIAN / BICYCLE ACCESS
- 13 DUMPSTER ENCLOSURE AND EQUIPMENT



THESE RENDERINGS ARE AN ARTIST'S CONCEPTION AND ARE NOT INTENDED FOR USE AS CONSTRUCTION DOCUMENTS



FoxArneson









**FoxArneson**

5972 Executive Drive  
Suite 100  
Madison, WI 53719  
608.276.4400

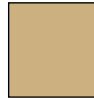

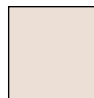

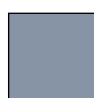
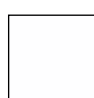
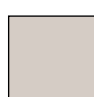
**FOXARNESON.COM**

# EXTERIOR FINISH KEY





## GAS & LUBE

-  (A) Face Brick #1 (Light)  
Bowerston Shale Co., #43 Utility
-  (B) Face Brick & Inset #2 (Dark)  
Interstate Brick, L-4 Copperstone
-  (C) Cast Stone (Natural)  
Big River Cast Stone Inc., #8-19
-  (D) Sheet Metal Trim  
Brite Red
-  (E) Aluminum Composite Material  
Brite Red
-  (F) Aluminum Composite Material  
Platinum
-  (G) Aluminum Composite Material  
Pewter
-  (H) Aluminum Composite Material  
Bone White
-  (J) Storefront Glass  
Clear
-  (K) Storefront Glass  
Spandrel

## CAR WASH

-  (A) Face Brick #1 (Light)  
Bowerston Shale Co., #43 Utility
-  (B) Face Brick & Inset #2 (Dark)  
Interstate Brick, L-4 Copperstone
-  (C) Cast Stone (Natural)  
Big River Cast Stone Inc., #8-19
-  (D) Sheet Metal Trim  
Brite Red
-  (G) Aluminum Composite Material  
Pewter
-  (H) Aluminum Composite Material  
Bone White
-  (J) Storefront Glass  
Clear

## FUEL CANOPY

-  (B) Face Brick & Inset #2 (Dark)  
Interstate Brick, L-4 Copperstone
-  (C) Cast Stone (Natural)  
Big River Cast Stone Inc., #8-19
-  (D) Sheet Metal Trim  
Brite Red
-  (H) Aluminum Composite Material  
Bone White



FoxArneson

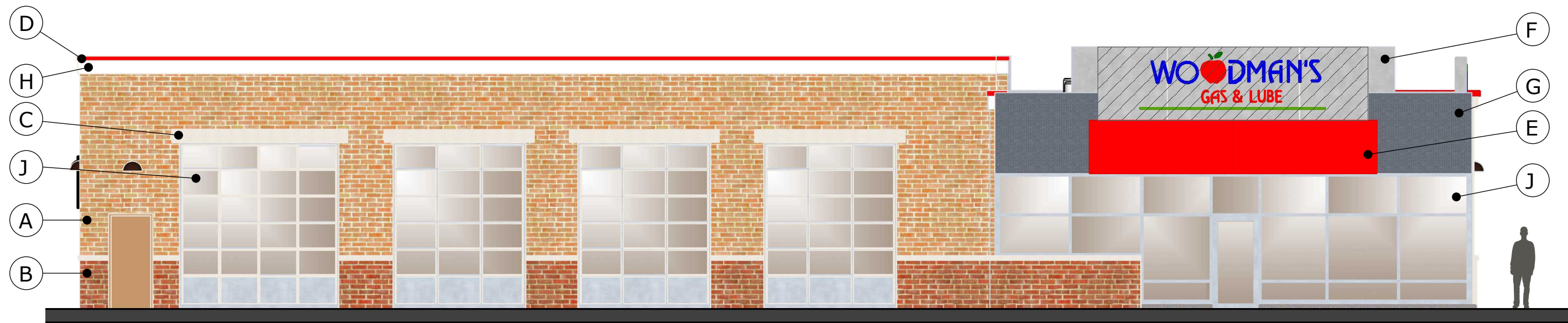


MADISON EAST GAS & LUBE




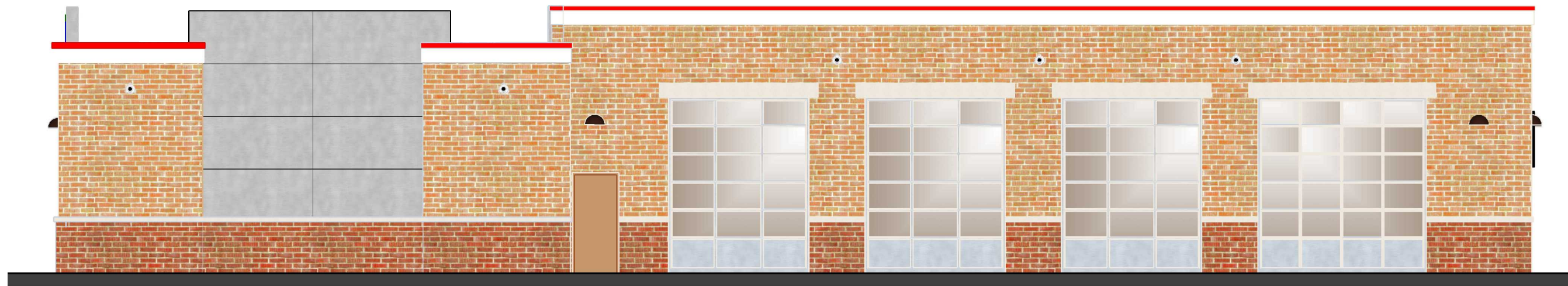
Date: 2-5-20





GAS & LUBE EAST ELEVATION 1/8" = 1'-0"

210 sf	<b>SIGNABLE AREA</b>	
35 sf	"WOODMAN'S"	
10 sf	"GAS & LUBE"	
2 sf	STRIPE	
47 sf	<b>TOTAL SIGN AREA</b>	
22%	<b>OF TOTAL SIGNABLE AREA</b>	



GAS & LUBE WEST ELEVATION 1/8" = 1'-0"



FoxArneson



MADISON EAST GAS & LUBE




Date: 12-18-19  
Revised: 2-5-20





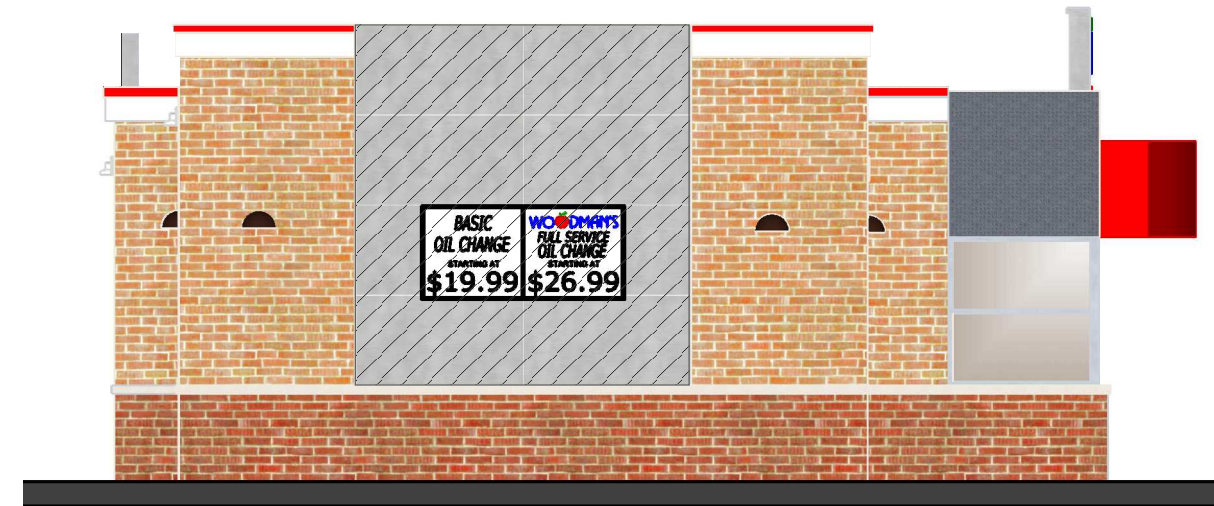
GAS & LUBE NORTH ELEVATION 1/8" = 1'-0"

88 sf **SIGNABLE AREA**   
 28 sf "WOODMAN'S"  
 7 sf "GAS & LUBE"  
 2 sf **STRIPE**  
 37 sf **TOTAL SIGN AREA**  
 42% **OF TOTAL SIGNABLE AREA**



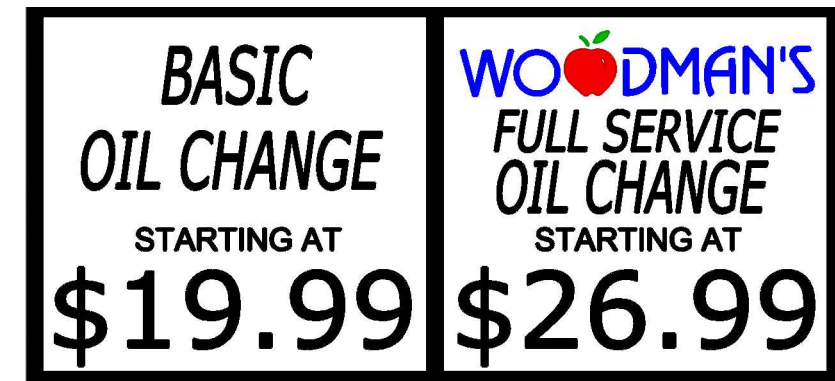
BLACKLIT LED

WOODMAN'S GAS AND LUBE BUILDING SIGN 3/8" = 1'-0"



GAS & LUBE SOUTH ELEVATION 1/8" = 1'-0"

210 sf **SIGNABLE AREA**   
 34 sf **OIL CHANGE SIGN**  
 34 sf **TOTAL SIGN AREA**  
 16% **OF TOTAL SIGNABLE AREA**



INTERNALLY ILLUMINATED

WOODMAN'S OIL CHANGE SIGN 1/2" = 1'-0"



FoxArneson



MADISON EAST GAS & LUBE



Date: 12-18-19  
 Revised: 2-5-20





GAS & LUBE NORTH PERSPECTIVE



GAS & LUBE NORTHWEST PERSPECTIVE



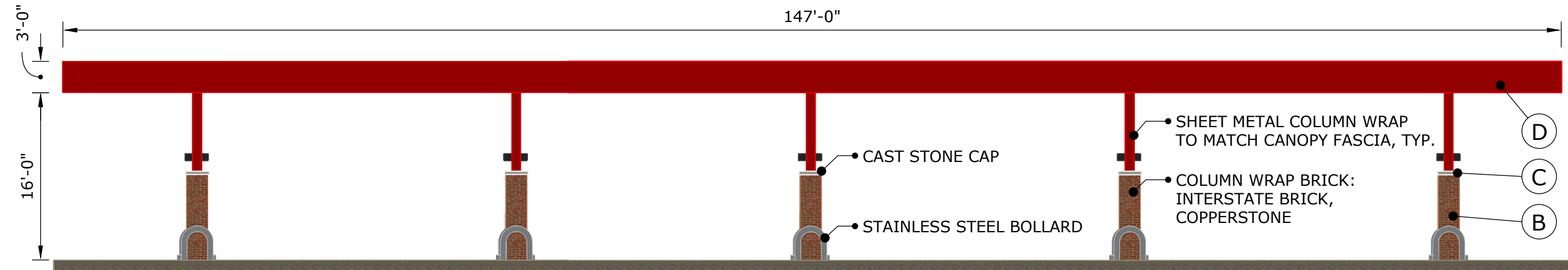
FoxArneson



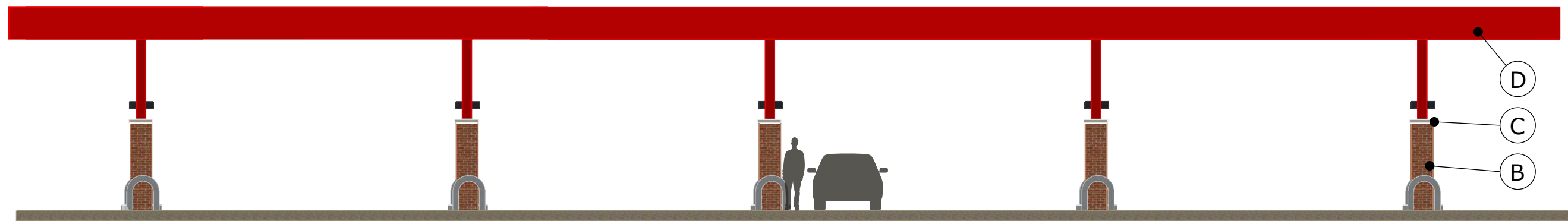
MADISON EAST GAS & LUBE

3

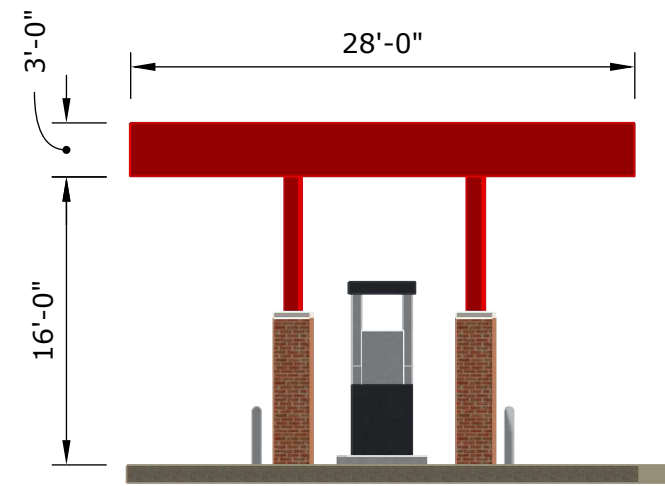
Date: 12-18-19  
Revised: 2-5-20



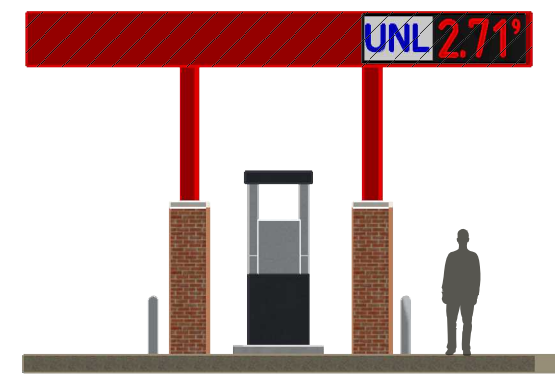
FUEL CANOPY WEST ELEVATION 3/32" = 1'-0"



FUEL CANOPY EAST ELEVATION 3/32" = 1'-0"

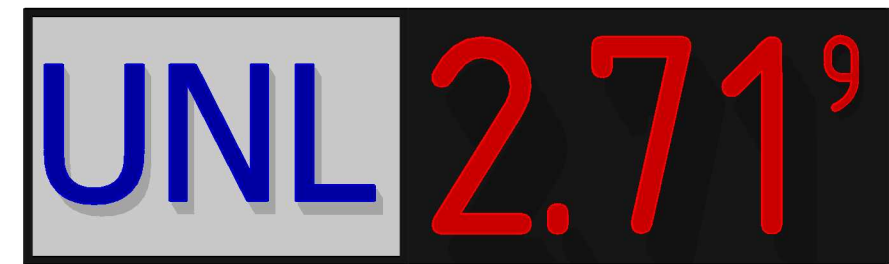


FUEL CANOPY NORTH ELEVATION 3/32" = 1'-0"



FUEL CANOPY NORTH ELEVATION 3/32" = 1'-0"

75 sf **SIGNABLE AREA**  
 24 sf **PRICER SIGN**  
 24 sf **TOTAL SIGN AREA**  
 34% **OF TOTAL SIGNABLE AREA**



NOTE: SIGN IS INTERALLY ILLUMINATED

PRICER SIGN 1/2" = 1'-0"



FoxArneson



MADISON EAST GAS & LUBE



Date: 12-18-19  
 Revised: 2-5-20





FUEL CANOPY PERSPECTIVE



FoxArneson

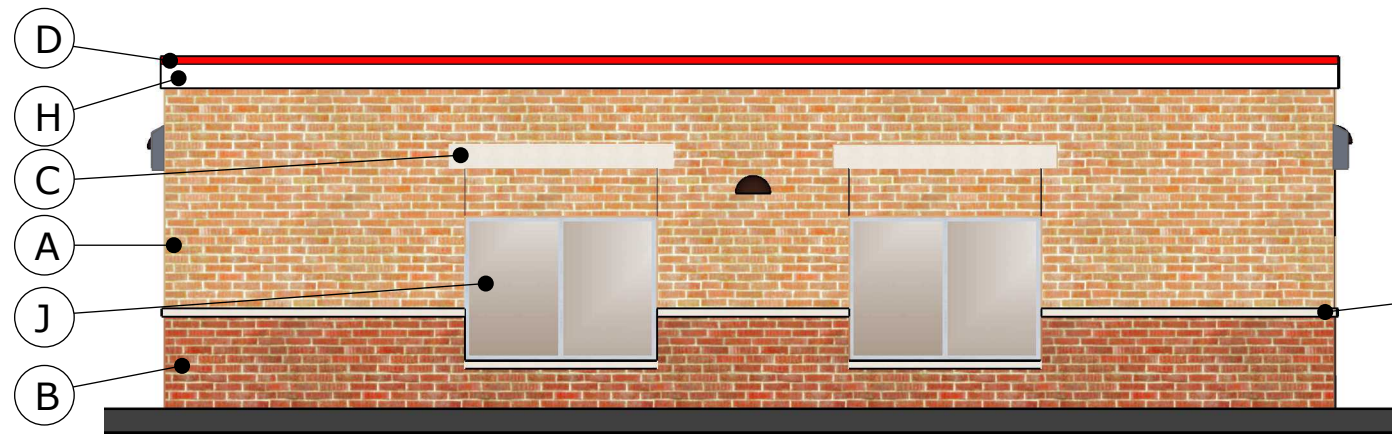


MADISON EAST GAS & LUBE

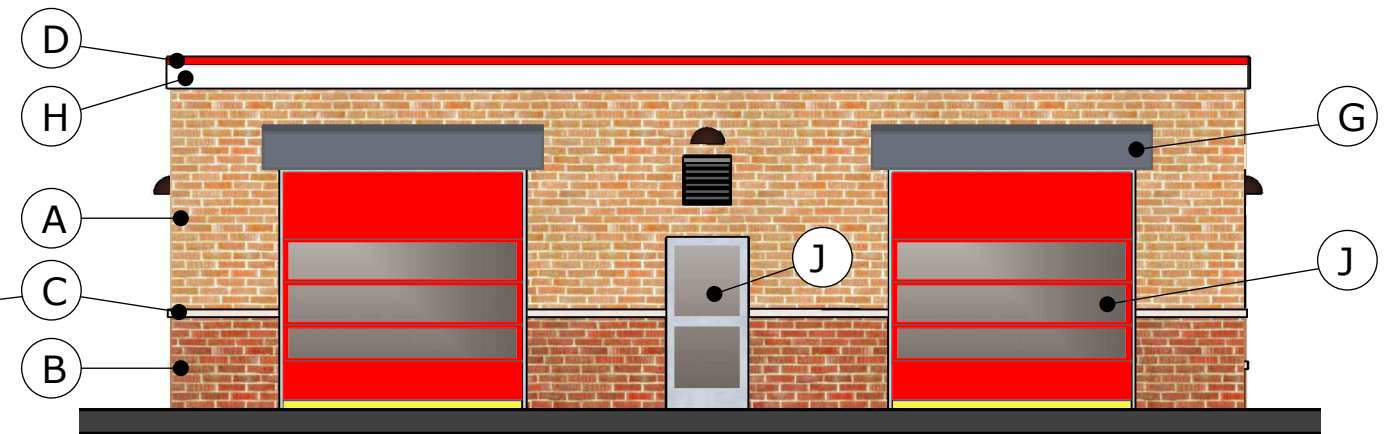
5

Date: 12-18-19  
Revised: 2-5-20

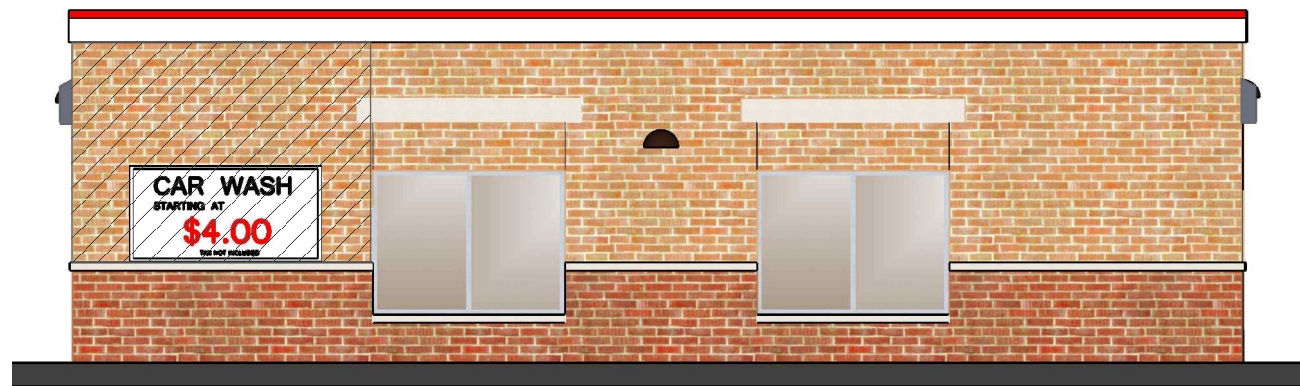




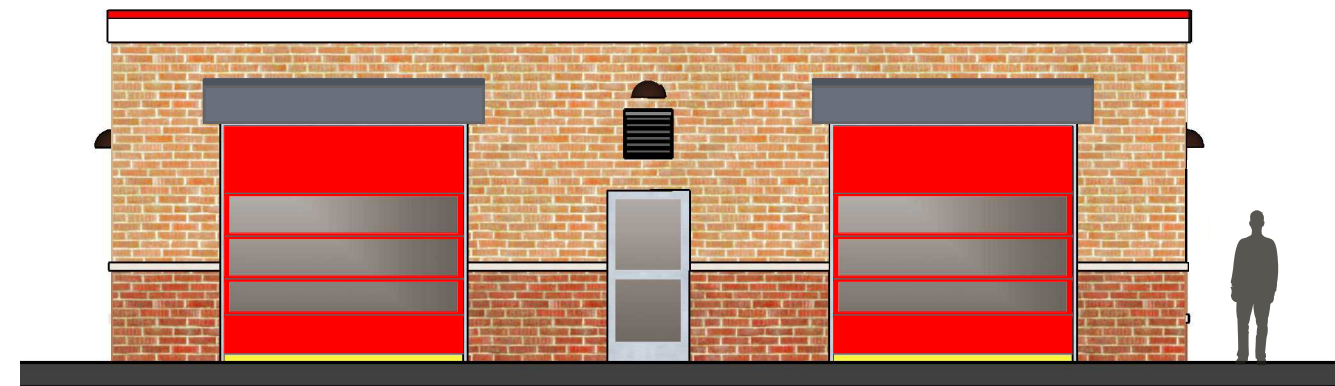
CAR WASH EAST ELEVATION 1/8" = 1'-0"



CAR WASH SOUTH ELEVATION 1/8" = 1'-0"



CAR WASH WEST ELEVATION 1/8" = 1'-0"



CAR WASH NORTH ELEVATION 1/8" = 1'-0"



INTERNALLY ILLUMINATED  
CAR WASH SIGN 3/8" = 1'-0"

108 sf **SIGNABLE AREA**   
32 sf **CAR WASH SIGN**  
32 sf **TOTAL SIGN AREA**  
29% **OF TOTAL SIGNABLE AREA**



FoxArneson



MADISON EAST GAS & LUBE



Date: 12-18-19  
Revised: 2-5-20





CAR WASH PERSPECTIVE



CAR WASH PERSPECTIVE



MADISON EAST GAS & LUBE



Date: 12-18-19  
Revised: 2-5-20





VIEW OF GROUND SIGN LOOKING WEST

1/4" = 1'-0"



VIEW OF GROUND SIGN LOOKING EAST

1/4" = 1'-0"



FoxArneson

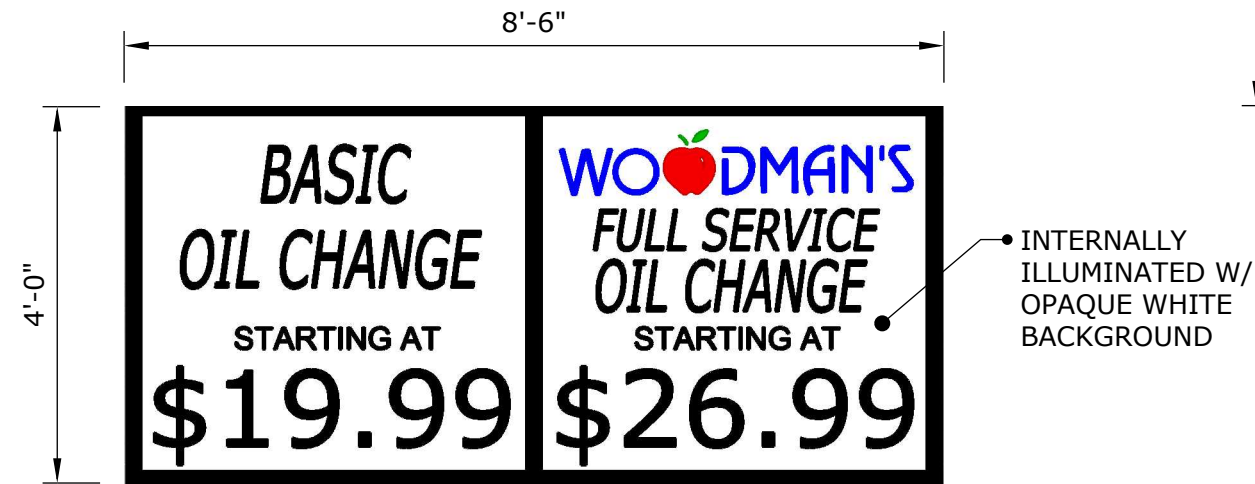


MADISON EAST GAS & LUBE

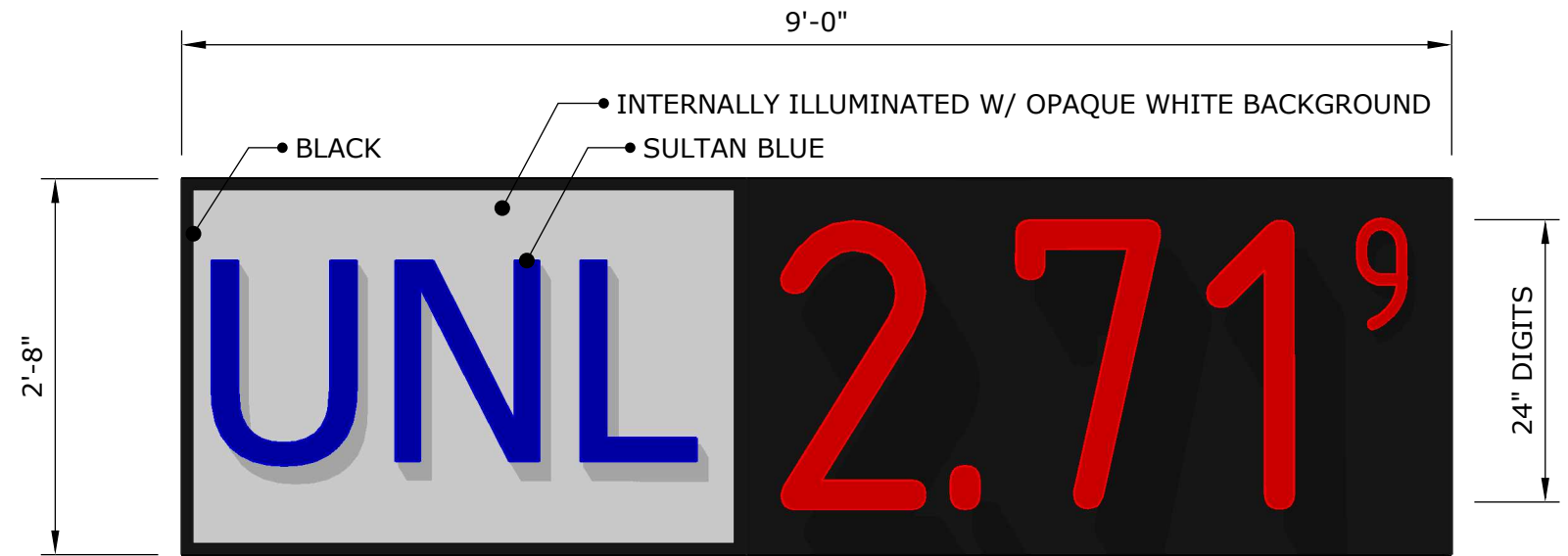


Date: 12-18-19  
Revised: 2-5-20

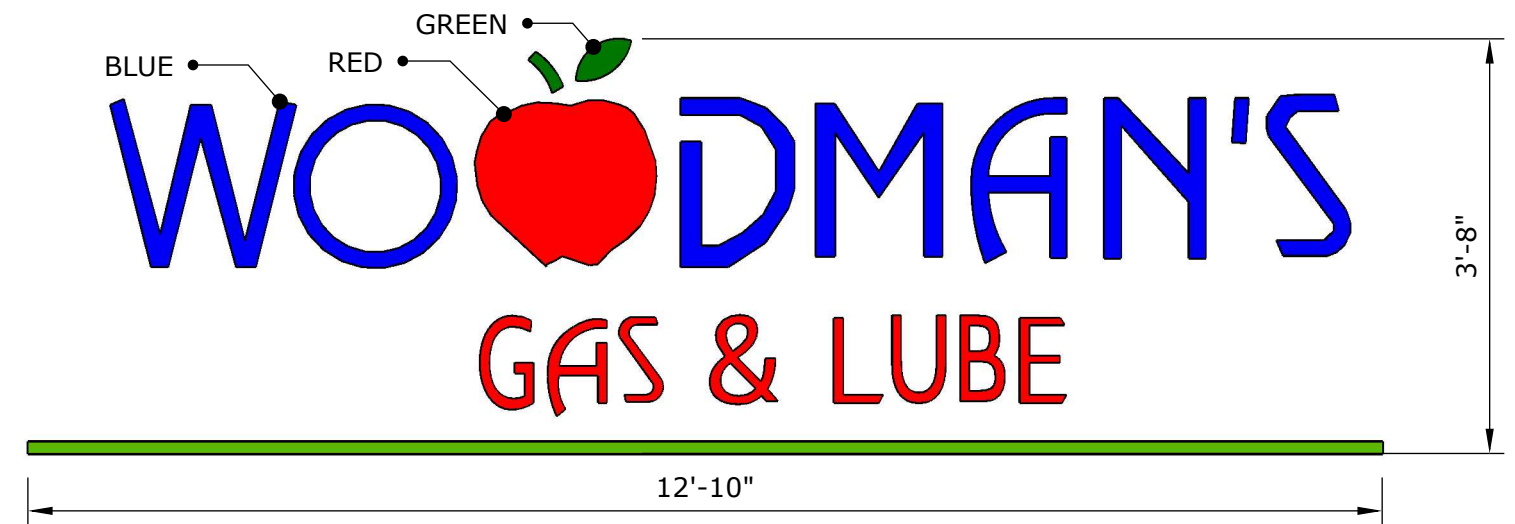




INTERNALLY ILLUMINATED  
OIL CHANGE SIGN 1/2" = 1'-0" AREA: 34 ft. sq.



INTERNALLY ILLUMINATED  
PRICER SIGN 3/4" = 1'-0" AREA: 24 ft. sq.



BACKLIT LED  
WOODMAN'S GAS & LUBE BUILDING SIGN 1/2" = 1'-0" AREA: 47 ft. sq.



MADISON EAST GAS & LUBE



Date: 12-18-19  
Revised: 2-5-20

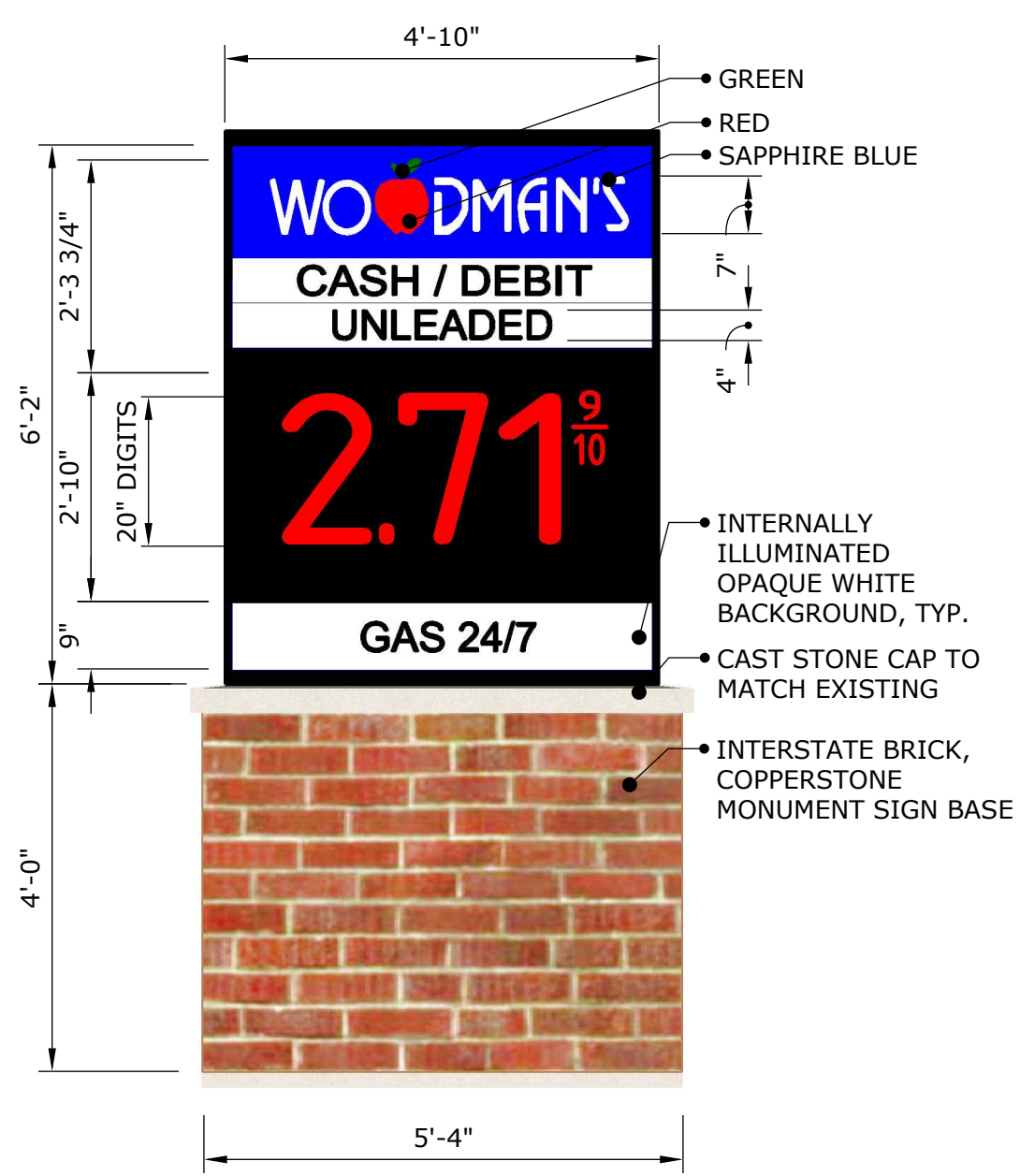




INTERNALLY ILLUMINATED

CAR WASH SIGN 1/2" = 1'-0"

AREA: 32 ft. sq.



NOTE: SIGN IS INTERALLY ILLUMINATED

WOODMAN'S DOUBLE-SIDED GROUND SIGN 1/2" = 1'-0" AREA: 30 ft. sq.



10

Date: 12-18-19  
Revised: 2-5-20



VIEW OF EXISTING BILLBOARD LOOKING EAST



VIEW OF EXISTING BILLBOARD LOOKING WEST

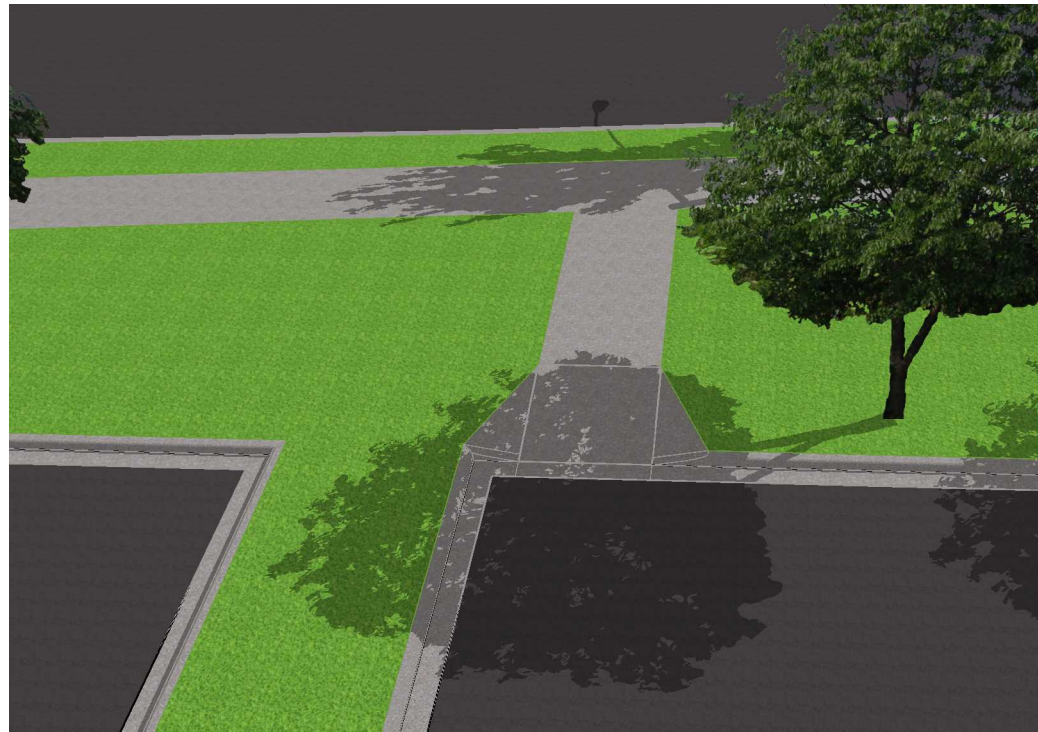




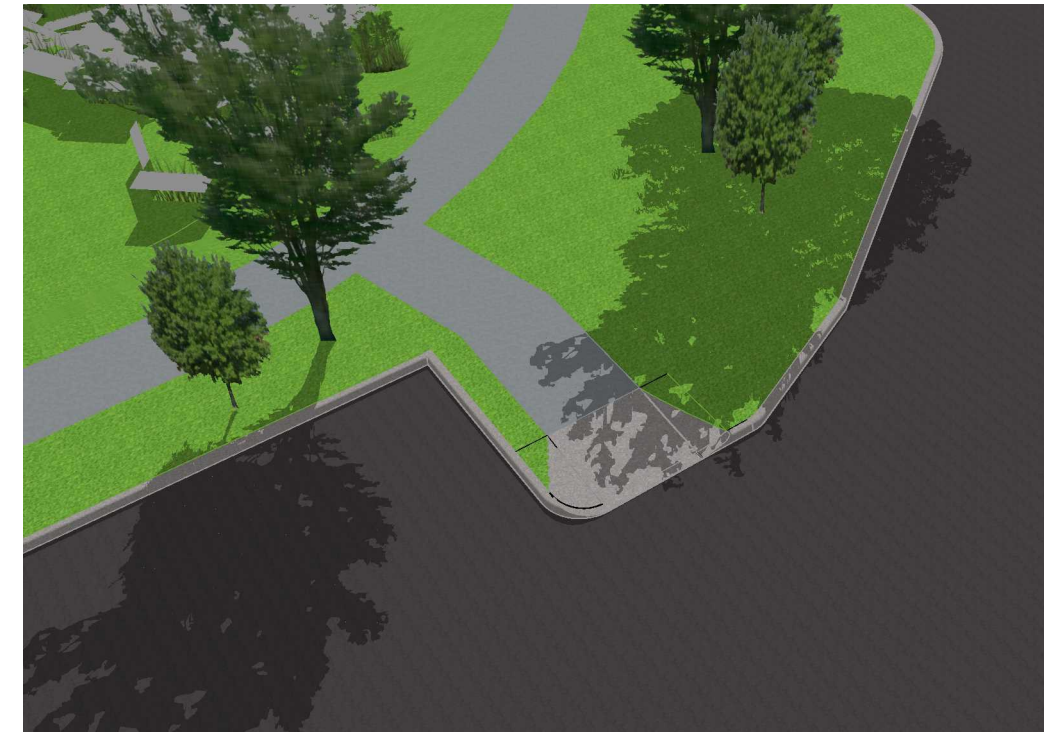
VIEW OF SOUTH-EAST ACCESS



VIEW OF GAS & LUBE ACCESS



VIEW OF NORTH LOT ACCESS



VIEW OF WEST LOT ACCESS



FoxArneson



MADISON EAST GAS & LUBE

12

Date: 12-18-19  
Revised: 2-5-20





---

DUMPSTER ENCLOSURE



---

LUBE BUILDING EQUIPMENT