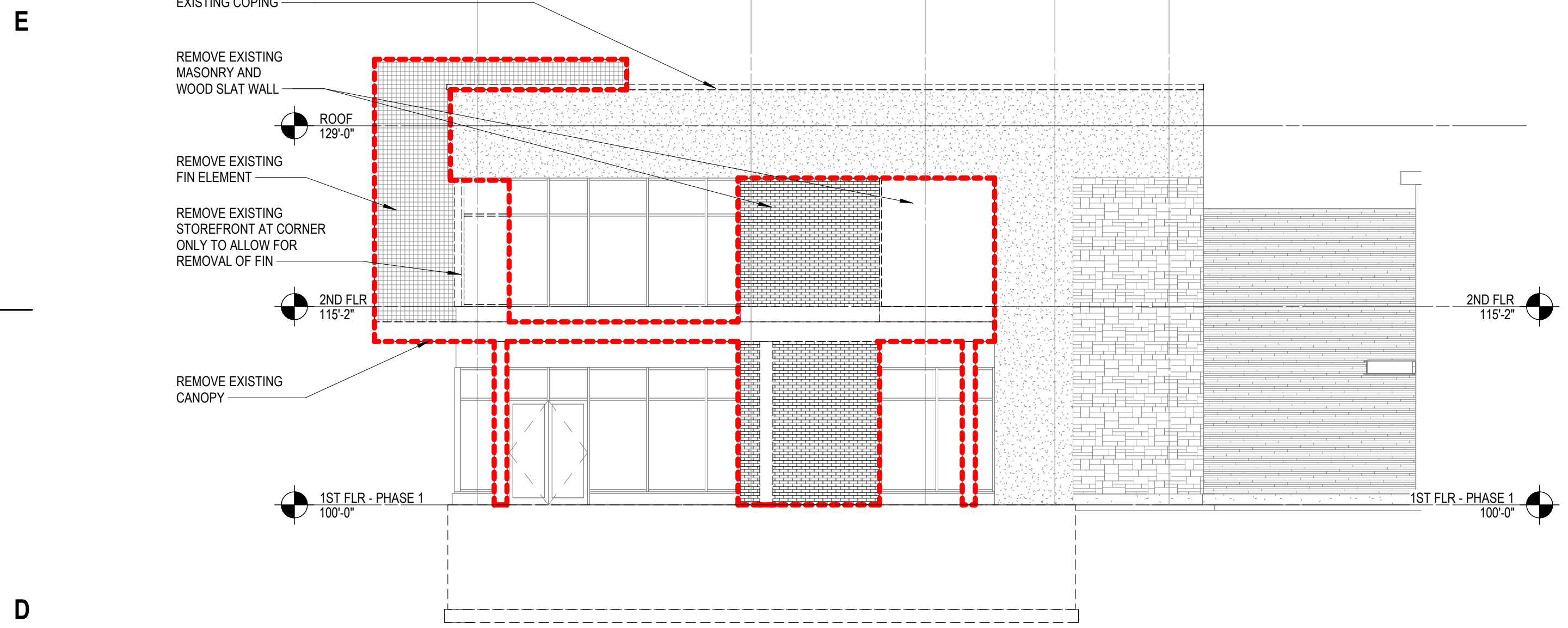


1 2 3 4 5 6 7

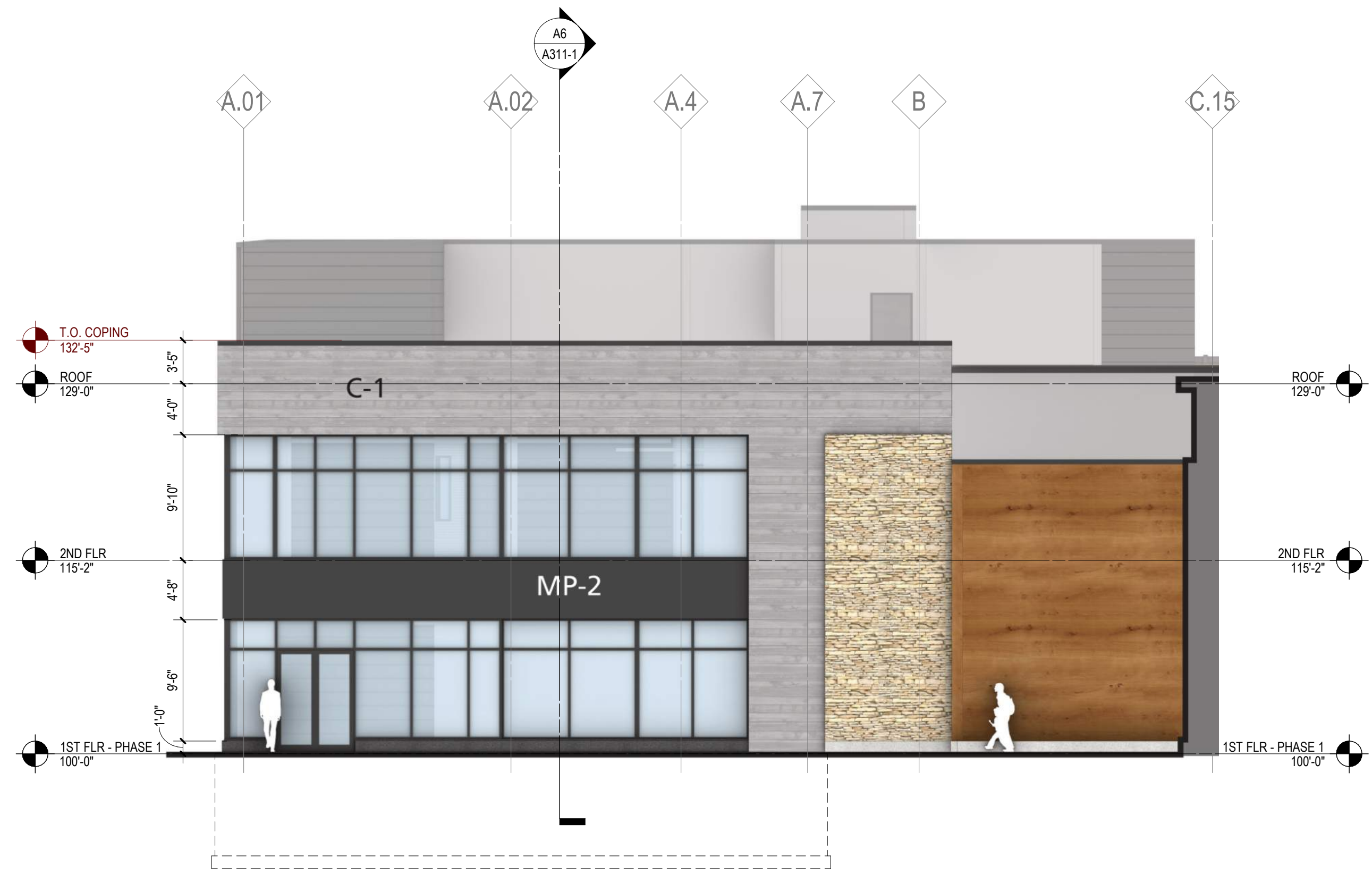
EXTERIOR MATERIALS	
B-8	MASONRY FACE BRICK
B-9	EXISTING MASONRY - PAINTED
C-1	BOARD FORMED PRECAST CONCRETE PANELS
GW-1	GREEN WALL CABLE SYSTEM
MP-1	METAL PANEL ACM
MP-2	METAL PANEL ZINC COMPOSITE PANEL
MP-4	METAL PANEL PANELS WITH CONCEALED FASTENERS
PC-1	PARAPET WALL COPING
PS-1	PAINTED STEEL
S-3	STONE
ST-1	METAL STOREFRONT
E9	PAINTED METAL PARAPET CAPS (COLOR MATCHED TO MP-1 FACADE PANELS)
IE10	7" PROTRUDING BRICK AND FLEMISH BOND BRICK PATTERN
E11	CANOPY SIGNAGE PAINTED BY TENANT



milwaukee | madison | green bay | denver | atlanta



D1 NORTH ELEVATION - DEMOLITION - PHASE 1
1/8" = 1'-0"



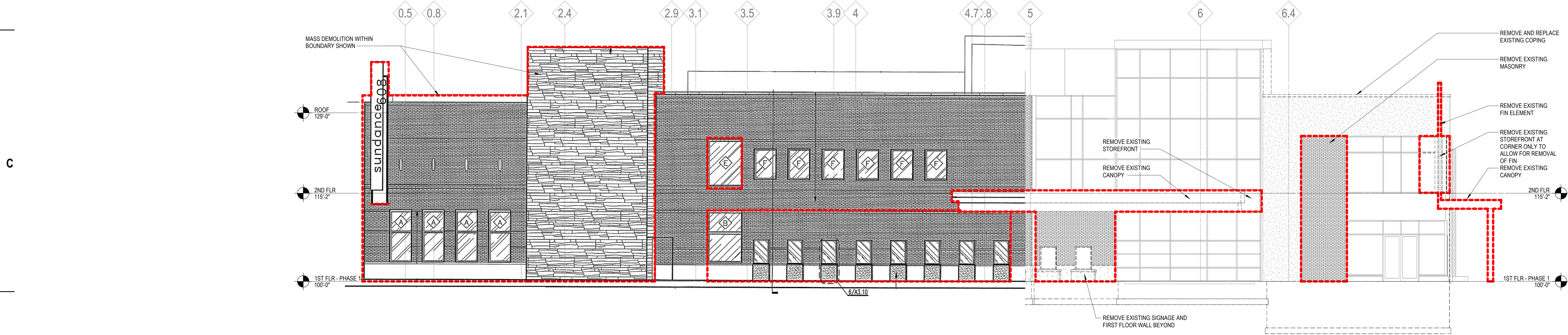
D4 NORTH ELEVATION - NEW
1/8" = 1'-0"

PROJECT INFORMATION
**HILLDALE PHASE 3
BUILDING 100**

D 702 N. Midvale Blvd.
Madison, WI 53705

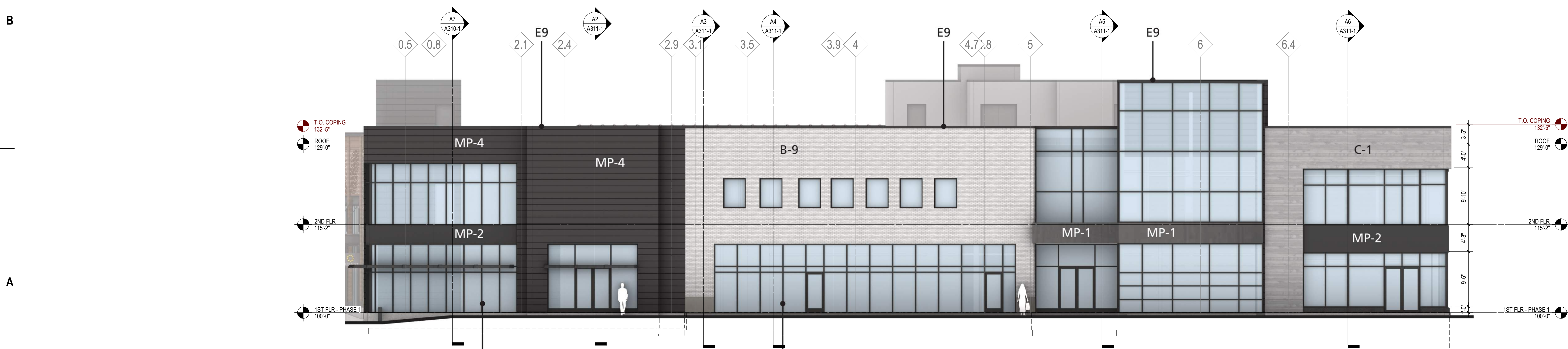
ISSUANCE AND REVISIONS

DATE	DESCRIPTION
03/13/2023	CITY SUBMITTAL



B2 EAST ELEVATION - DEMOLITION - PHASE 1
1/8" = 1'-0"

KEY PLAN



A2 EAST ELEVATION - NEW
1/8" = 1'-0"

SHEET INFORMATION
**PROGRESS DOCUMENTS
NOT FOR CONSTRUCTION**
These documents reflect progress and intent and may be subject to change, including additional detail. These are not final construction documents and shall not be used for final bidding or construction-related purposes.

PROJECT MANAGER JP
PROJECT NUMBER 719494-01

EXTERIOR ELEVATIONS

A200-1

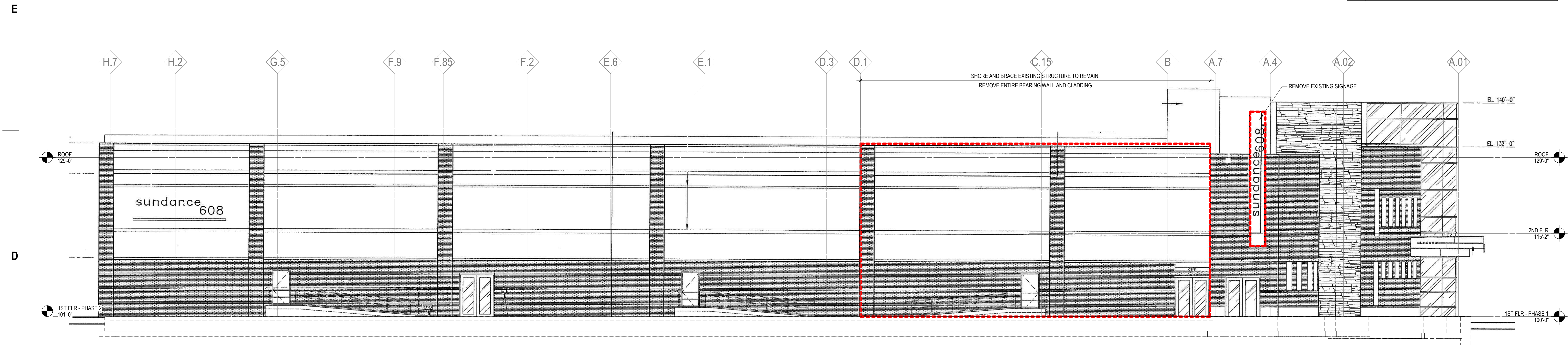
© 2023 Epstein Uhen Architects, Inc.

1 2 3 4 5 6 7

EXTERIOR MATERIALS	
B-8	MASONRY FACE BRICK
B-9	EXISTING MASONRY - PAINTED
C-1	BOARD FORMED PRECAST CONCRETE PANELS
GW-1	GREEN WALL CABLE SYSTEM
MP-1	METAL PANEL ACM
MP-2	METAL PANEL ZINC COMPOSITE PANEL
MP-4	METAL PANEL PANELS WITH CONCEALED FASTENERS
PC-1	METAL PARAPET WALL COPING
PS-1	PAINTED STEEL
S-3	STONE
ST-1	METAL STOREFRONT
E9	PAINTED METAL PARAPET CAPS (COLOR MATCHED TO MP-1 FACADE PANELS)
E10	7" PROFILING BRICK AND FLEMISH BOND BRICK PATTERN
E11	CANOPY SIGNAGE PAINTED BY TENANT



milwaukee | madison | green bay | denver | atlanta



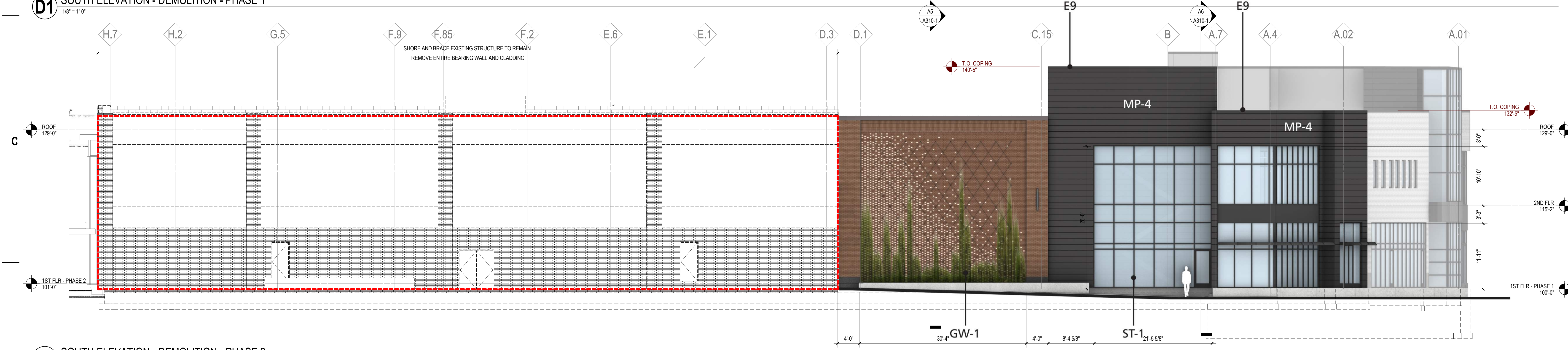
D1 SOUTH ELEVATION - DEMOLITION - PHASE 1
1/8" = 1'-0"

PROJECT INFORMATION
**HILDALE PHASE 3
 BUILDING 100**

**702 N. Midvale Blvd.
 Madison, WI 53705**

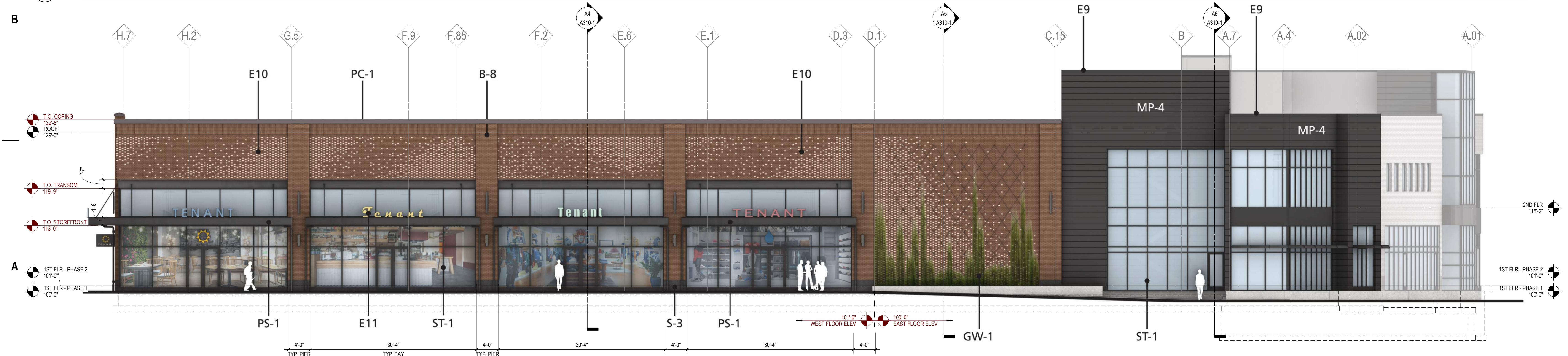
ISSUANCE AND REVISIONS

DATE	DESCRIPTION
03/13/2023	CITY SUBMITTAL



B1 SOUTH ELEVATION - DEMOLITION - PHASE 2
1/8" = 1'-0"

KEY PLAN



A1 SOUTH ELEVATION - NEW - COMPLETE
1/8" = 1'-0"

SHEET INFORMATION

**PROGRESS DOCUMENTS
 NOT FOR CONSTRUCTION**
 These documents reflect progress and intent and may be subject to change, including additional detail. These are not final construction documents and shall not be used for final bidding or construction-related purposes.

PROJECT MANAGER JP
 PROJECT NUMBER 719494-01

EXTERIOR ELEVATIONS

A201-1

1

2

3

4

5

6

7

EXTERIOR MATERIALS	
B-8	MASONRY FACE BRICK
B-9	EXISTING MASONRY - PAINTED
C-1	BOARD FORMED PRECAST CONCRETE PANELS
GW-1	GREEN WALL CABLE SYSTEM
MP-1	METAL PANEL ACM
MP-2	METAL PANEL ZINC COMPOSITE PANEL
MP-4	METAL PANEL PANELS WITH CONCEALED FASTENERS
PC-1	METAL PARAPET WALL COPING
PS-1	PAINTED STEEL
S-3	STONE
ST-1	METAL STOREFRONT
E9	PAINTED METAL PARAPET CAPS (COLOR MATCHED TO MP-1 FACADE PANELS)
E10	7" PROTRUDING BRICK AND FLEMISH BOND BRICK PATTERN
E11	CANOPY SIGNAGE PAINTED BY TENANT



milwaukee | madison | green bay | denver | atlanta

E

E

PROJECT INFORMATION

HILLDALE PHASE 3
BUILDING 100

D

702 N. Midvale Blvd.
Madison, WI 53705

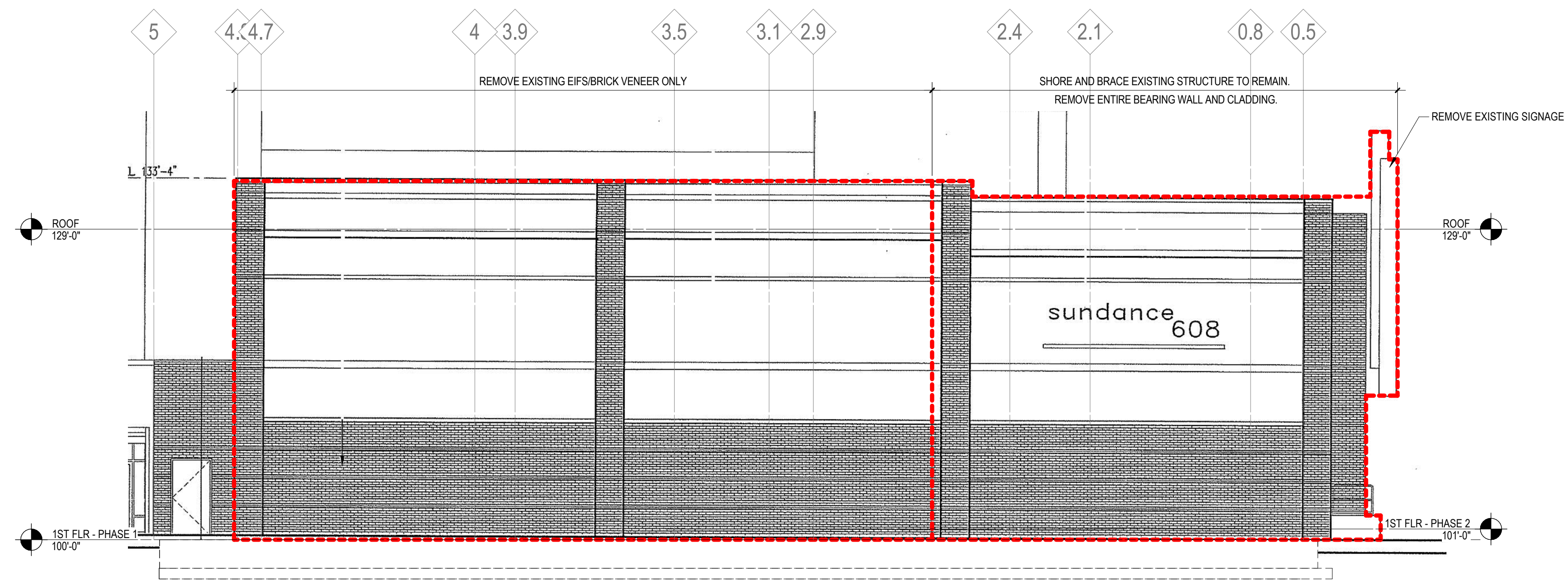
ISSUANCE AND REVISIONS

DATE	DESCRIPTION
03/13/2023	CITY SUBMITTAL

C

C

KEY PLAN



B4 WEST ELEVATION - DEMOLITION - PHASE 2
1/8" = 1'-0"

B

B

SHEET INFORMATION

**PROGRESS DOCUMENTS
NOT FOR CONSTRUCTION**
These documents reflect progress and intent and may be subject to change, including additional detail. These are not final construction documents and shall not be used for final bidding or construction-related purposes.

PROJECT MANAGER JP
PROJECT NUMBER 719494-01

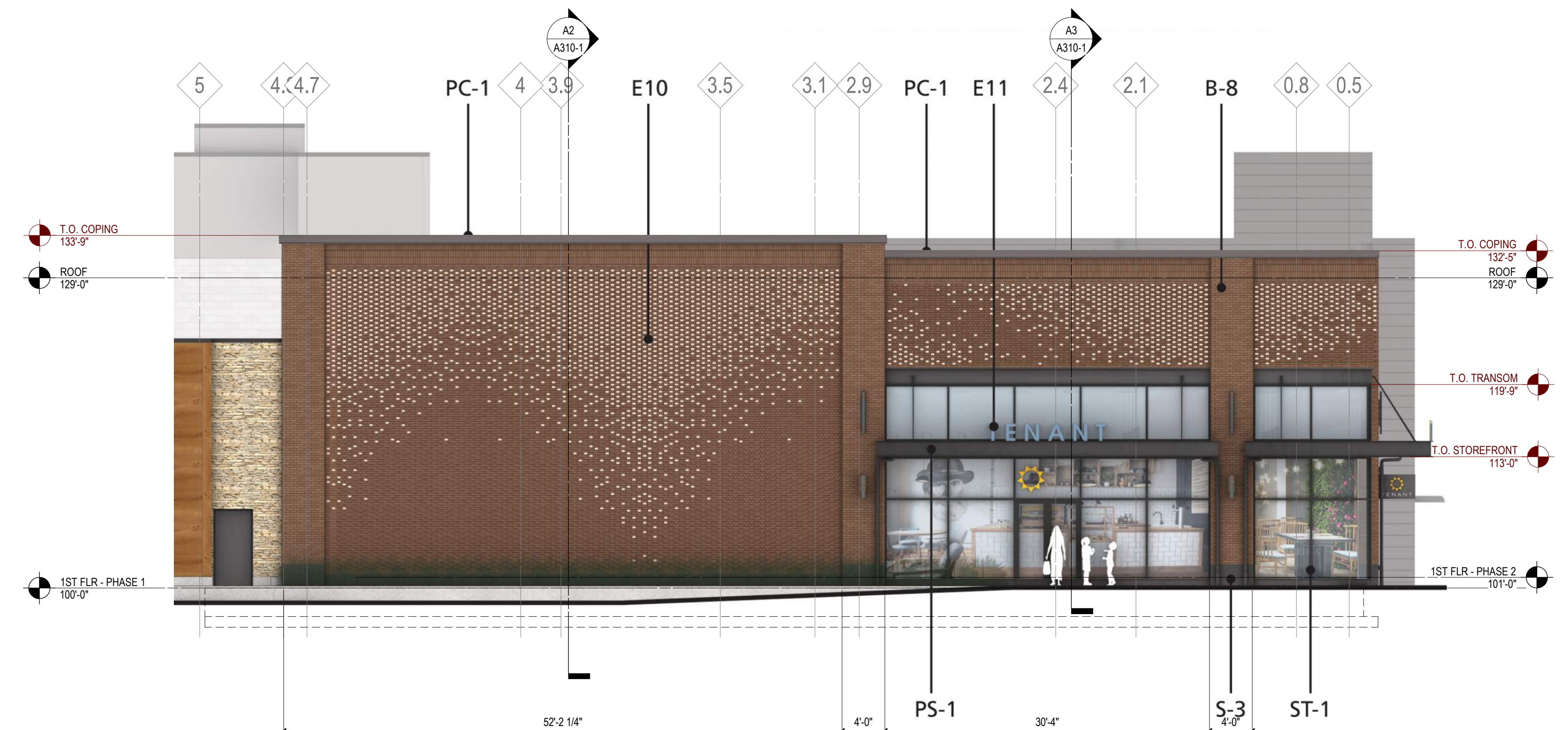
A

A

EXTERIOR ELEVATIONS

A202-1

© 2023 Epstein Uhen Architects, Inc.



A4 WEST ELEVATION - NEW
1/8" = 1'-0"

1

2

3

4

5

6

7