



PROJECT CONTACT
 » **Project Manager:** Shawn Beer
 608-267-1970, sbeer@cityofmadison.com

Fact and Details Sheet: Spooner Street Resurfacing Project

Project Details – Proposed Work

Street: The City will resurface the pavement from the Southwest Path to Regent St. All other concrete curb, driveway aprons and sidewalk will remain unchanged.

Speed humps will remain the same, with no changes proposed.

Driveway Aprons: No proposed work

Water Main: No proposed work

Storm Sewer: No proposed work

Sanitary Sewer: No proposed work

Bus Pads: No proposed work

Street Lights: Street lighting on existing MG&E wood poles will remain.

Assessments: The project will involve special assessments for some of the improvements. The assessments are a special charge for work being done that has direct benefit to the property. The preliminary assessments are mailed during the design phase and will give the property owner an estimated cost due after construction is complete. The final assessments bill will be mailed in 2027 to adjacent property owners. The bill is calculated based on measured quantities for pavement, driveway aprons, and terrace walks and are based on 2026 street improvements rates and will carry over from the preliminary assessments to the final assessments. The 10 feet of pavement reconstruction is defined as 10 feet of street width adjacent to the property frontage length. The sanitary sewer laterals and private storm sewer connections will also be billed based on bid prices and measured quantities during construction. The property payment options include payment by lump sum or over 8 years with 4.5% interest.

Trees: No proposed work

<https://www.cityofmadison.com/engineering/projects/resurfacing-program>

Construction Schedule & Impacts

Tentative Schedule: It is expected the project will take approximately 1-2 weeks to complete, summer 2026.

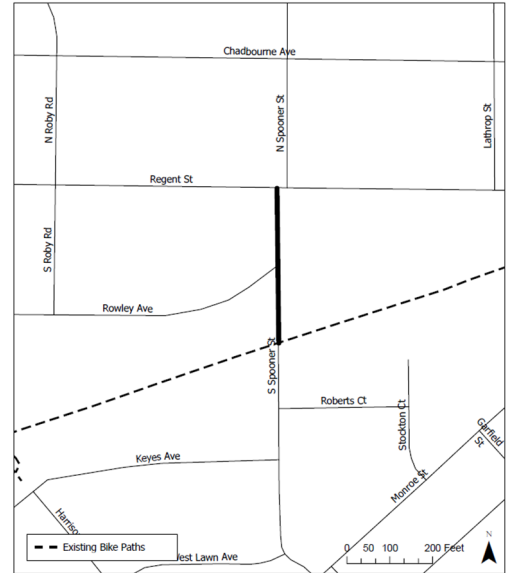
Traffic Impacts: 2 way traffic will be maintained. Flagging will be required.

Water Shut-offs: None

Refuse Collection & Mail Delivery: It will be the contractor’s responsibility to allow for refuse collection and mail delivery to continue during construction. Please mark your address on your cart to make sure it is returned if moved. We ask that you place your carts at the street the evening prior to or at the very latest 6:00 a.m. the morning of your scheduled refuse/recycling day.

Landscaping: No impacts

Project Location Map



Item	Property Owner Share	City Share
10' Pavement Replacement*	100%	0%
Remainder of pavement	0%	100%

*Pavement Replacement assessed per linear feet of frontage
 - 50% discount for single or two-family corner lots fronting two streets
 - 67% discount for single or two-family corner lots fronting three streets