

CONCRETE JOINT REPAIR
REPLACE CURB AND GUTTER



S. THORNTON AVENUE

RIVERSIDE DRIVE

YAHARA RIVER

WILLIAMSON STREET
BRIDGE

WILLIAMSON STREET

S. THORNTON AVENUE

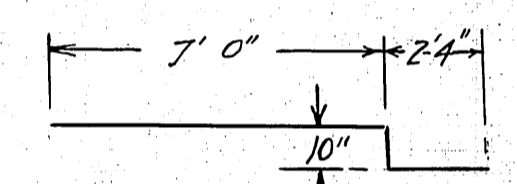
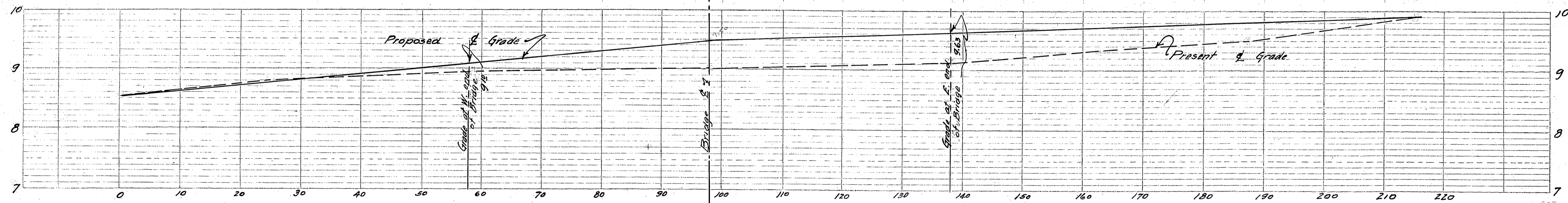
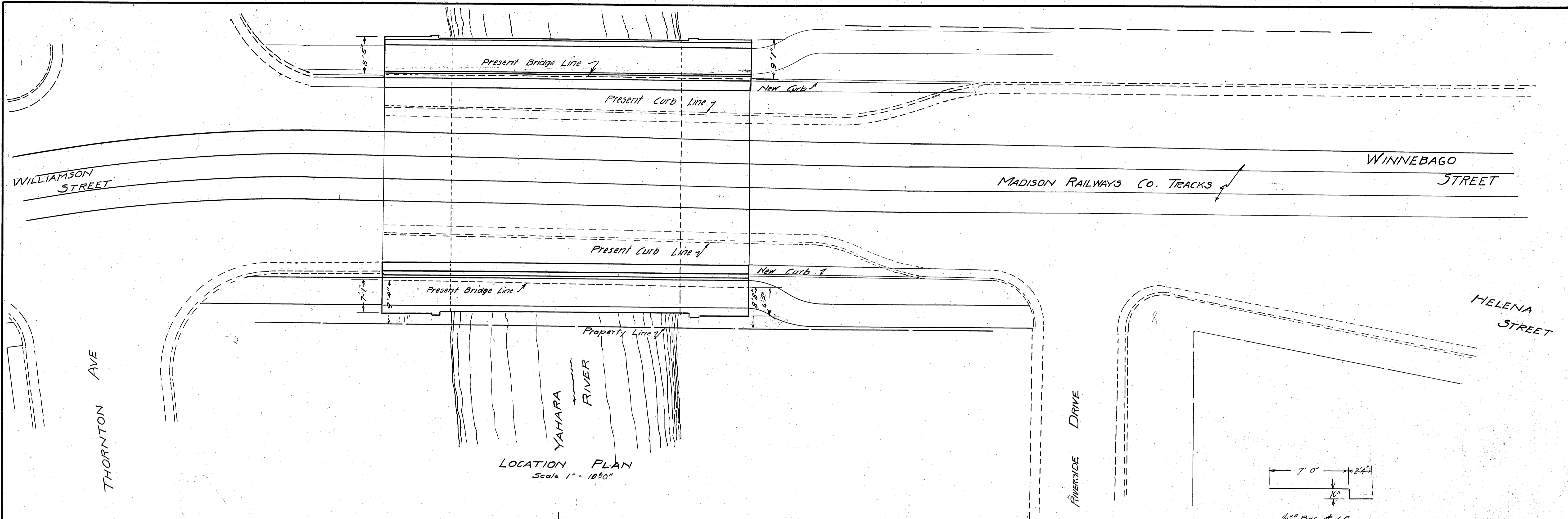
PLOT NAME: _____

ORIGINATOR: CITY OF MADISON, STREETS DIVISION

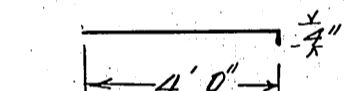








1/2" Bar # 65
160 Req'd



1/2" Bars # 66
160 Required

1/2" Bar # 67 - 83'-4" including 2 splices
22 Required

1/2" VERTICAL BARS - WALLS

No. of Bar	No. Required	Length	No. of Bar	No. Required	Length
1	4	5' 0"	21	4	9' 3"
2	4	5' 2"	22	8	9' 6"
3	4	5' 3"	23	4	9' 9"
4	8	5' 4"	24	4	10' 0"
5	4	5' 5"	25	4	10' 6"
6	4	5' 6"	26	4	10' 9"
7	4	5' 8"	27	4	11' 3"
8	4	5' 10"	28	8	12' 0"
9	4	5' 11"	29	4	12' 6"
10	4	6' 0"	30	4	12' 9"
11	4	6' 2"	31	4	13' 0"
12	4	6' 4"	32	4	13' 6"
13	4	6' 5"	33	4	13' 9"
14	4	6' 8"	34	4	14' 0"
15	4	6' 10"	35	4	14' 6"
16	4	7' 2"			
17	4	7' 5"			
18	4	7' 9"			
19	4	8' 2"			
20	12	8' 6"			

1/2" HORIZONTAL BARS

No. of Bar	No. Required	Length
36	4	6' 0"
37	4	9' 0"
38	4	12' 0"
39	4	16' 0"
40	4	19' 0"
41	4	24' 0"
42	4	32' 0"
43	4	40' 0"
44	8	80' 0"

1/2" TRANSVERSE BARS - ARCH RING

No. of Bar	No. Required	Length	No. of Bar	No. Required	Length
45	21	6' 4 1/2"	58	10	8' 6"
46	11	6' 5"	59	10	8' 6 1/2"
47	10	6' 5 1/2"	60	10	8' 7"
48	10	6' 6"	61	10	8' 7 1/2"
49	10	6' 6 1/2"	62	10	8' 8"
50	10	6' 7"	63	11	8' 8 1/2"
51	10	6' 7 1/2"	64	21	8' 9"
52	10	6' 8"			
53	11	6' 8 1/2"			
54	21	6' 9"			
55	21	8' 4 1/2"			
56	11	8' 5"			
57	10	8' 5 1/2"			

1" LONGITUDINAL BARS ARCH RING

No. of Bar	No. Required	Length
65	31	50' 0"
66	62	10' 0"
67	31	55' 0"
68	62	10' 0"

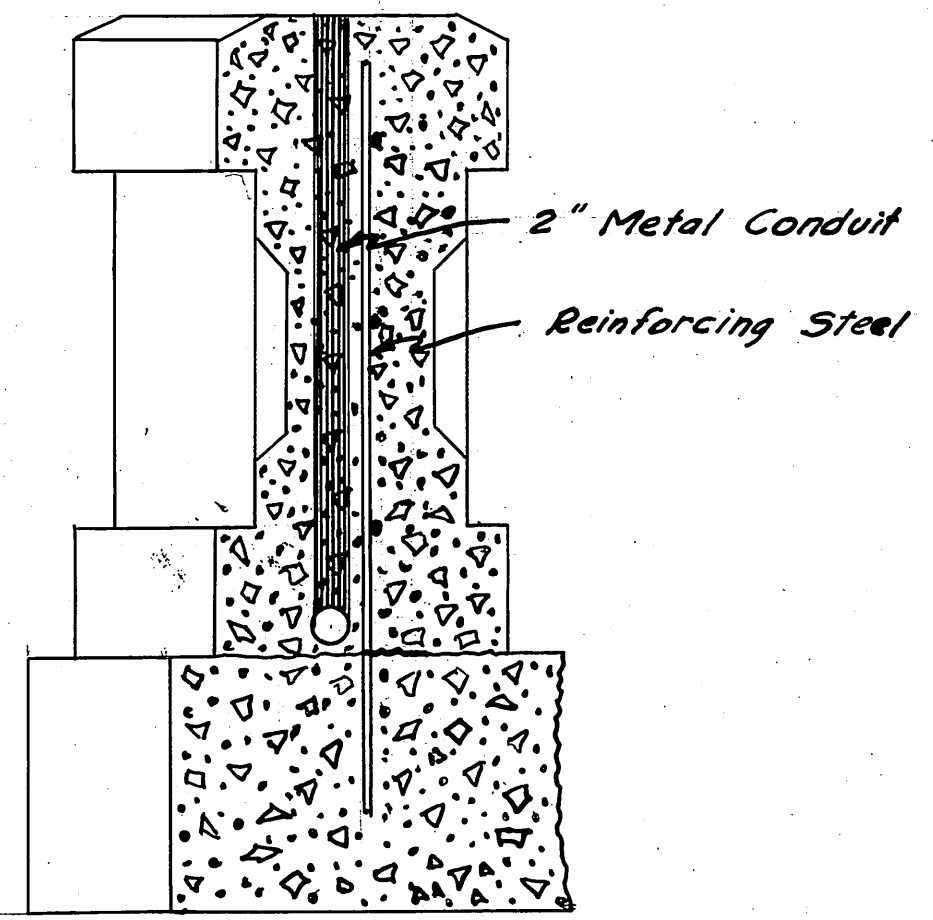
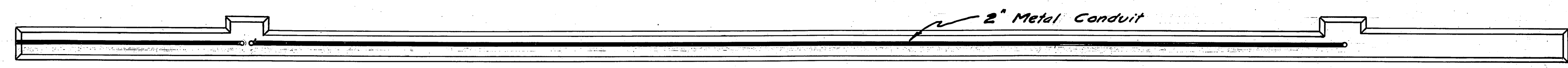
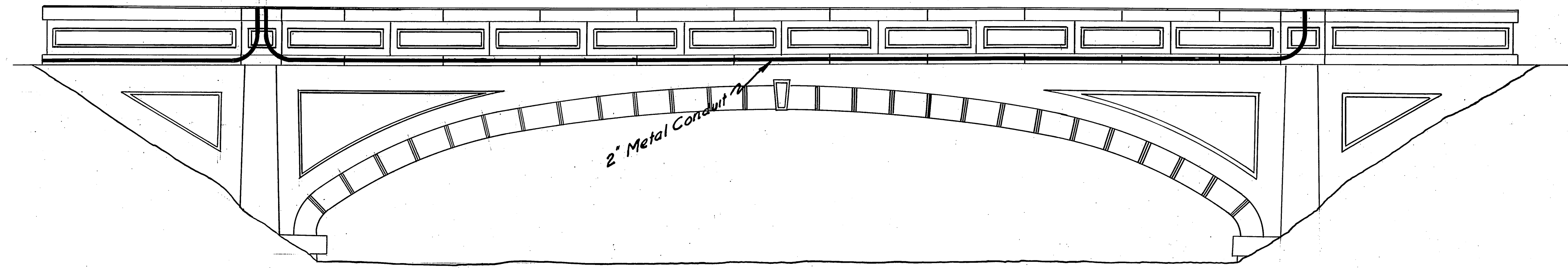
QUANTITIES.
 350 Cu. Yds Concrete,
 24380 # Reinforcing Steel,
 60 Files 25 Long,
 275 Cu. Yds Excavation,
 265 Cu Yds Sand Fill,
 160 Lin. ft. Special Curb & Gutter,
 960 Sq. ft. Special Side Walk,
 1280 Sq. ft. Standard Side Walk.

Approved by the Common Council
 June 27, 1930
M. J. ...
 City Clerk

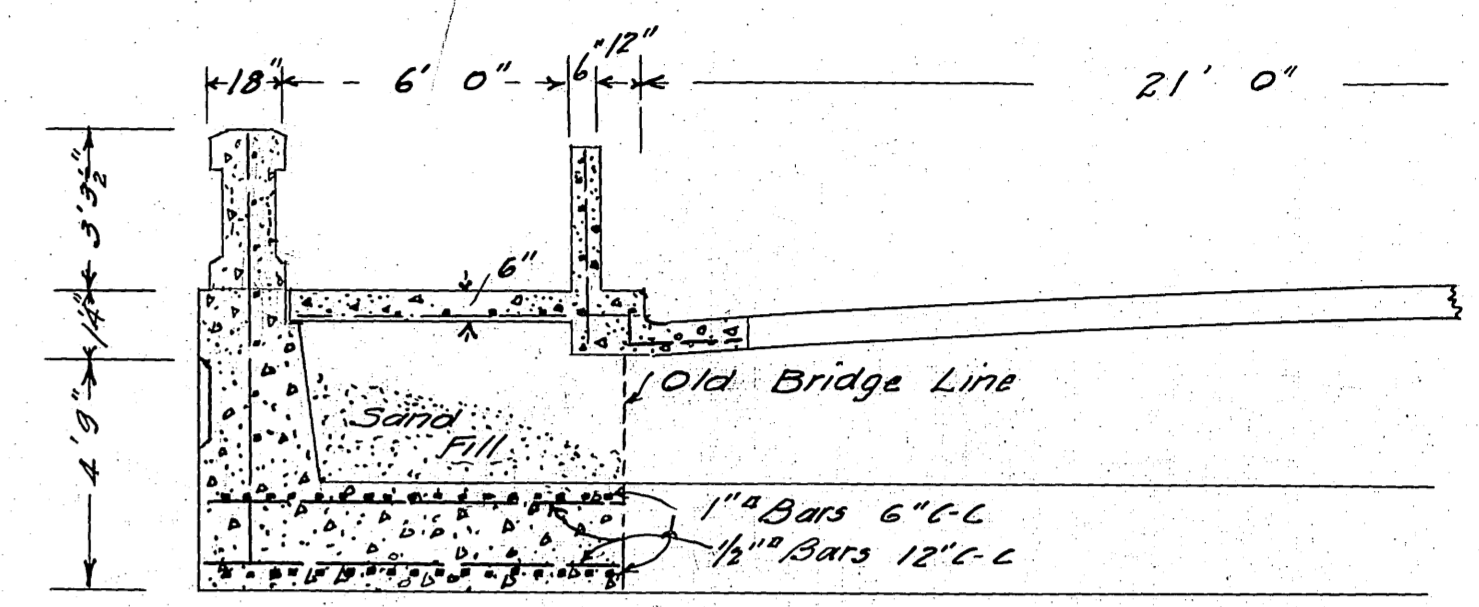
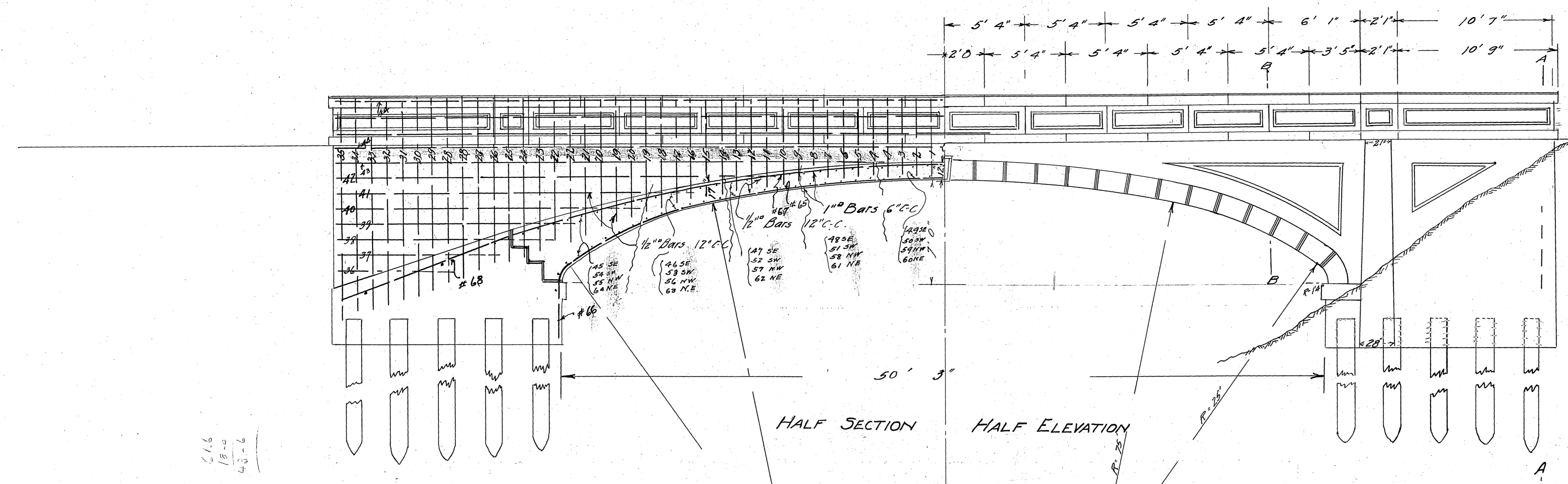
CITY OF MADISON, WISCONSIN.
 ENGINEERING DEPARTMENT
 WILLIAMSON STREET
 WIDENING OF BRIDGE
 LAYOUT PLAN & PROFILE
 Scale 1" = 10' 0"
 Drawn by E. E. ...
 Traced by E. E. ...
 June 17, 1930
 E. E. ...
 City Engineer

LOCATION OF LIGHTING CONDUIT
WILLIAMSON STREET BRIDGE

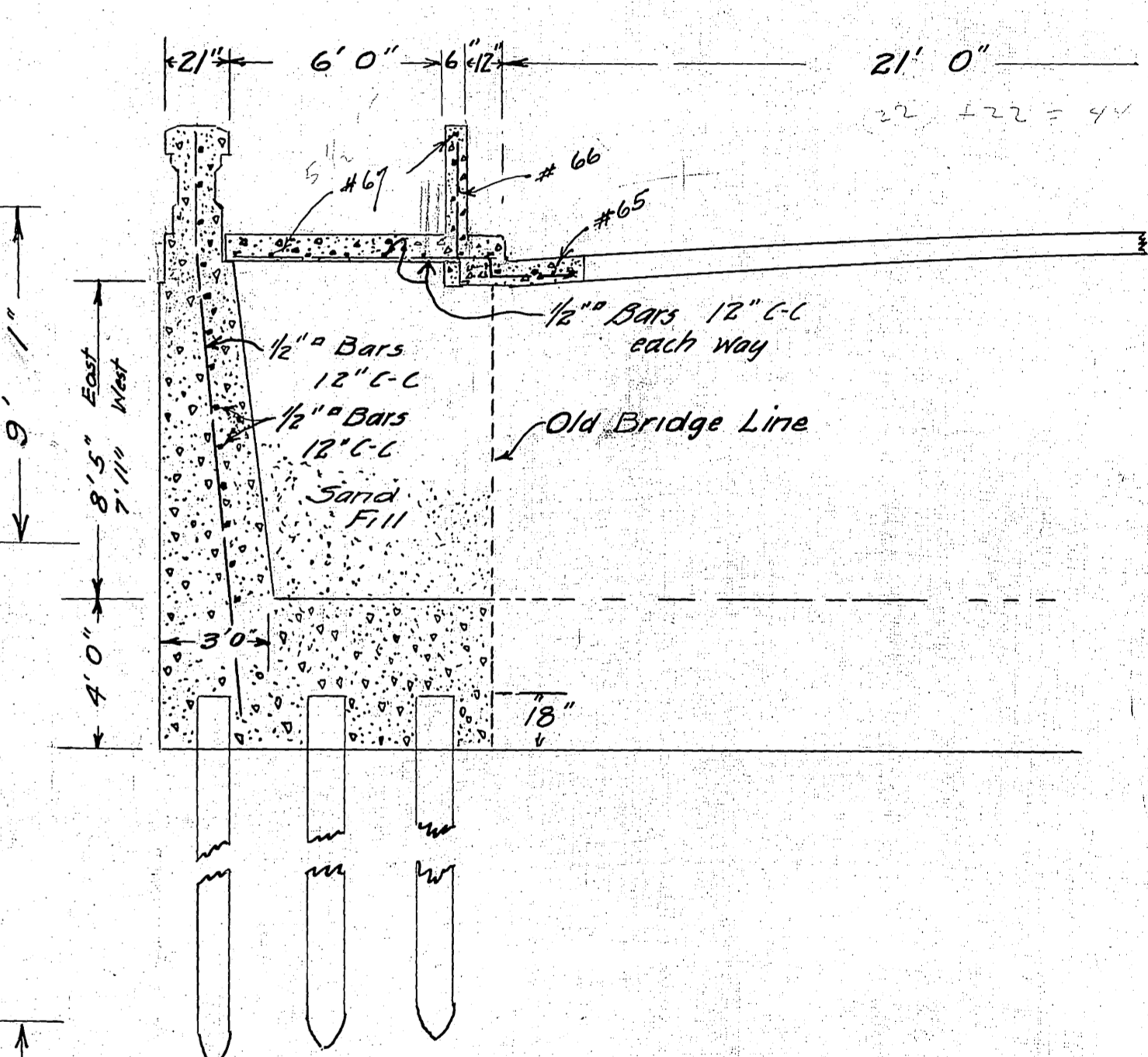
West Approach



CONDUIT TO BE PLACED IN BOTH WALLS



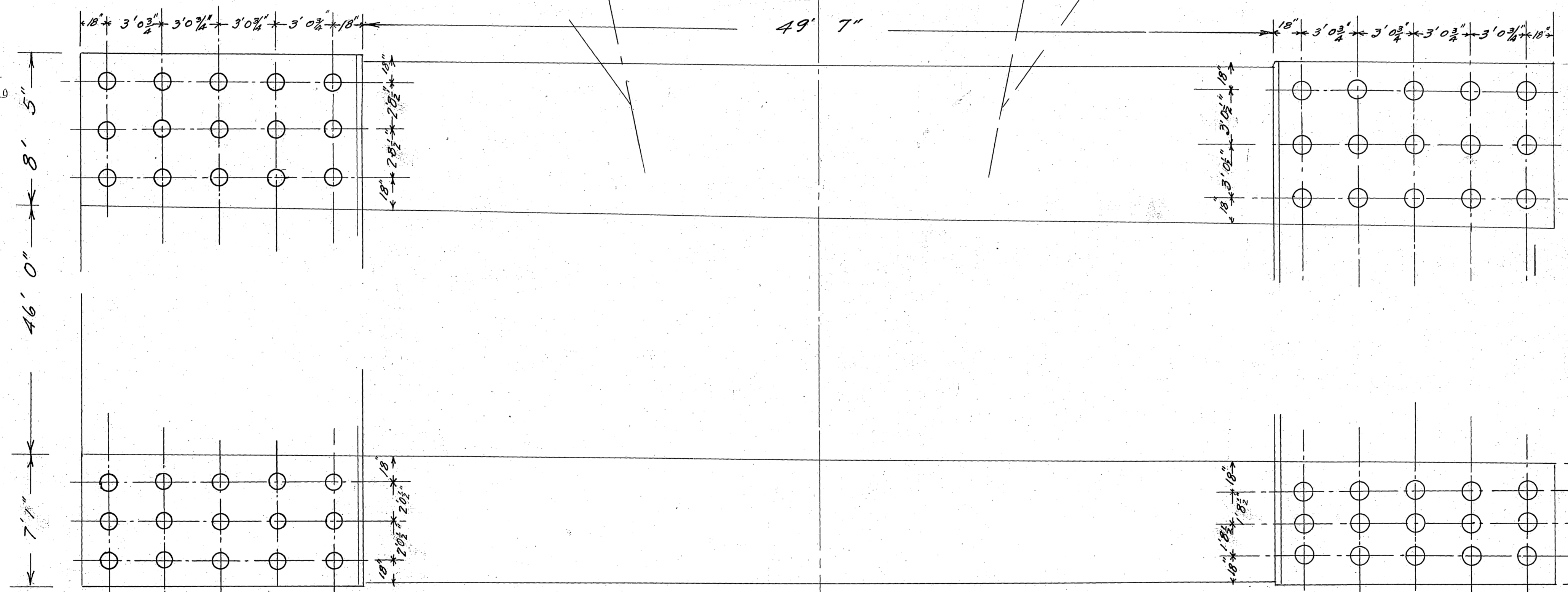
HALF SECTION B-B



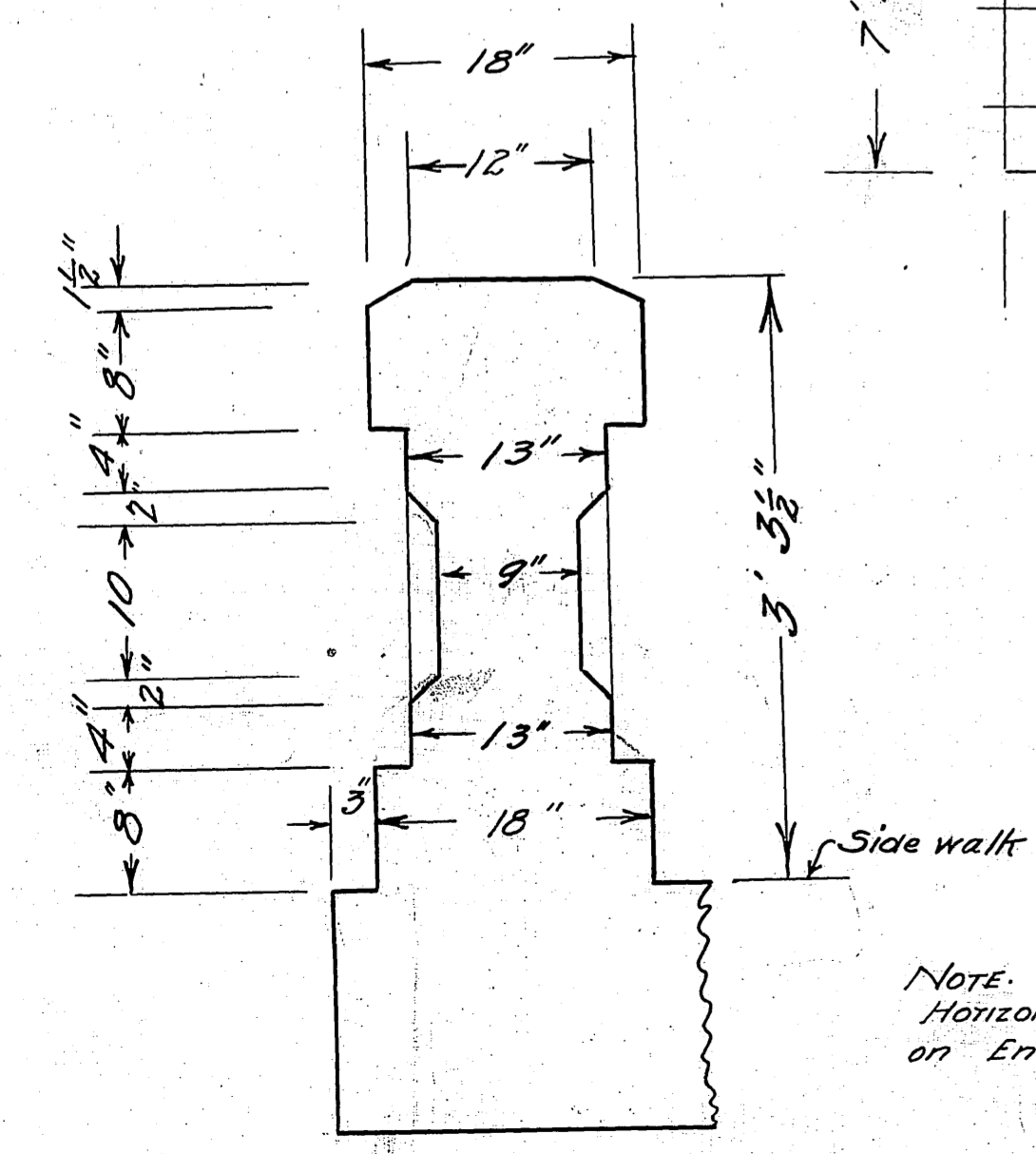
HALF SECTION A-A

61.6
18.0
43.6

46.0
8.5
7.1
61.6

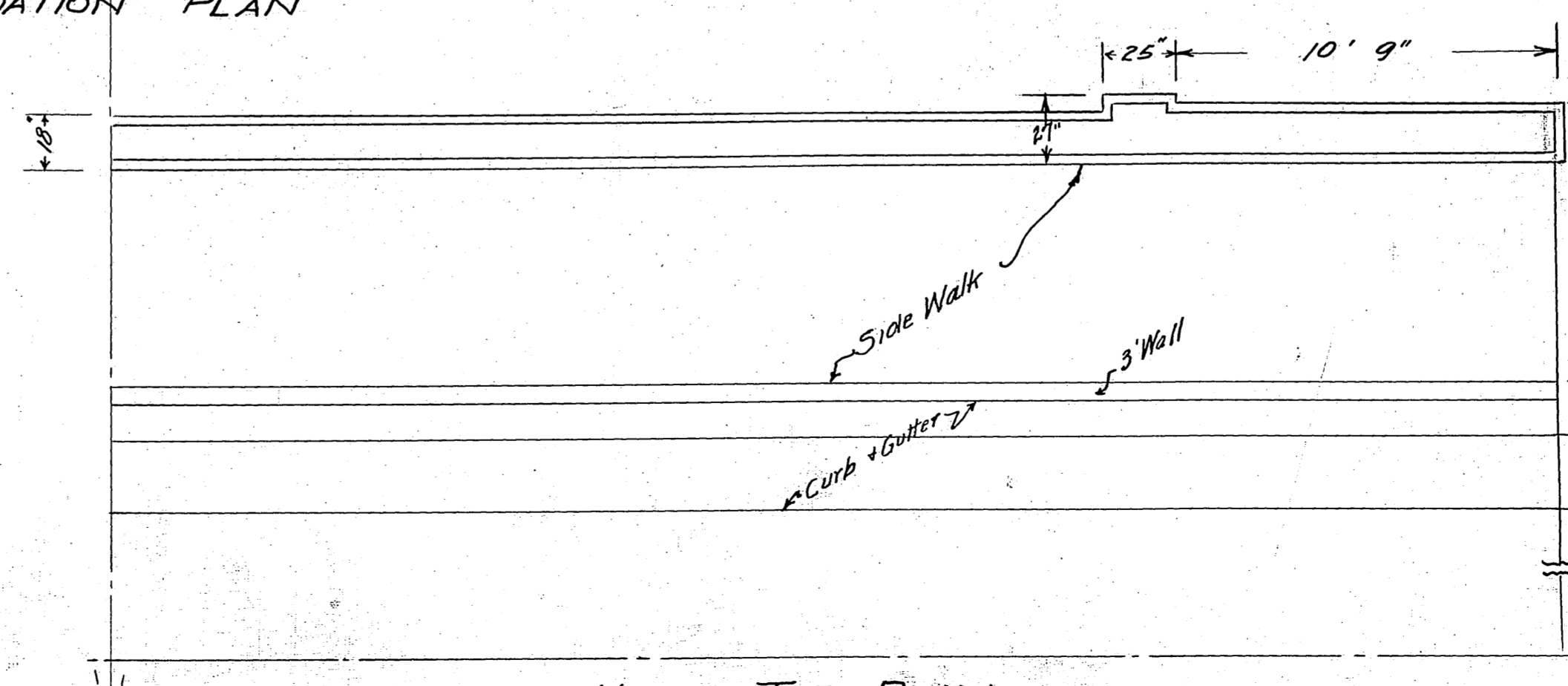


FOUNDATION PLAN

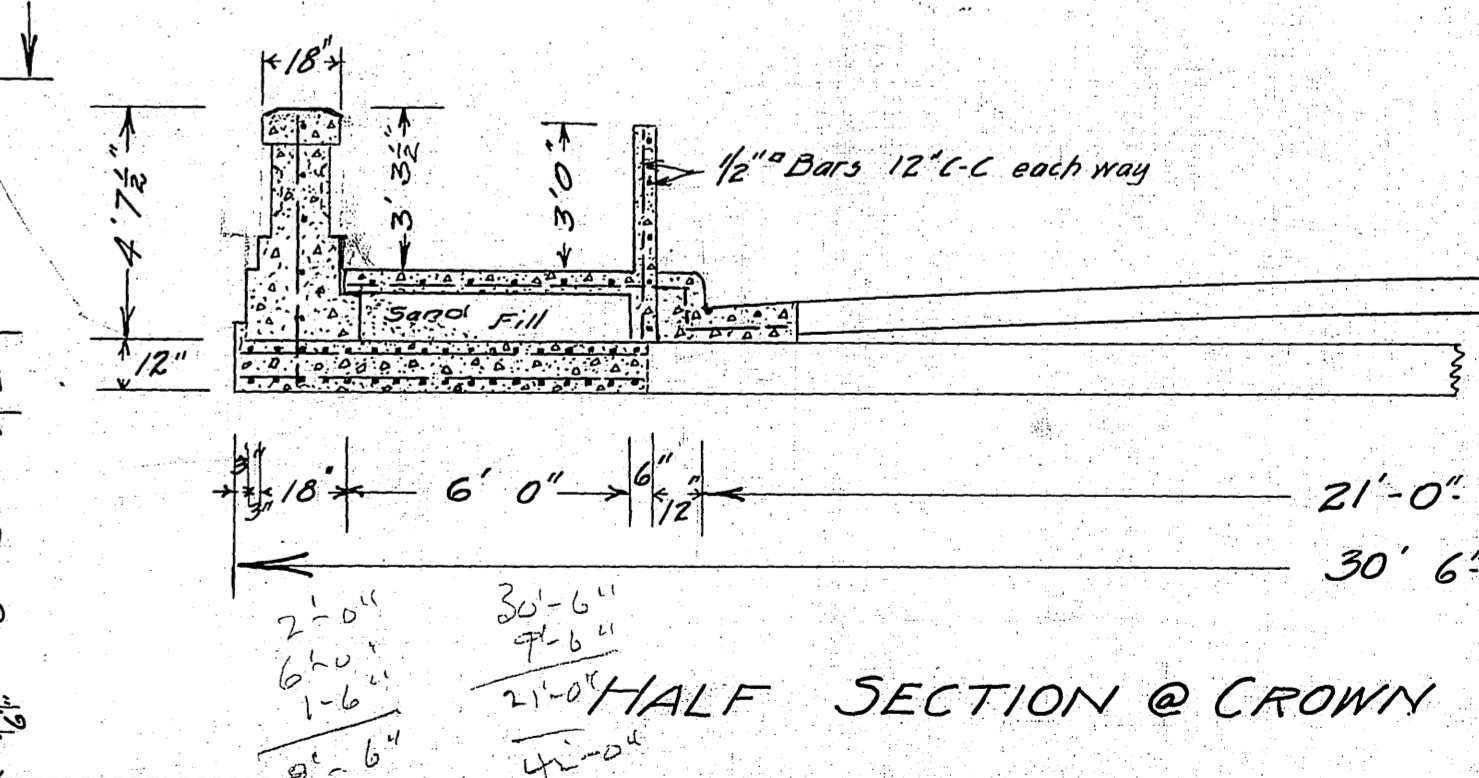


RAILING DETAIL
Scale 1"=1'0"

NOTE:
Horizontal dimensions are 3" larger
on End 10' 9" Sections.



HALF TOP PLAN



HALF SECTION @ CROWN

Approved by the Common Council
June 27, 1930
J. A. Koenig
City Clerk

CITY OF MADISON, WISCONSIN
ENGINEERING DEPARTMENT
WILLIAMSON STREET,
WIDENING OF BRIDGE
PLAN AND SECTIONS
Scale 1/4"=1'0"
E. E. Parker
City Engineer