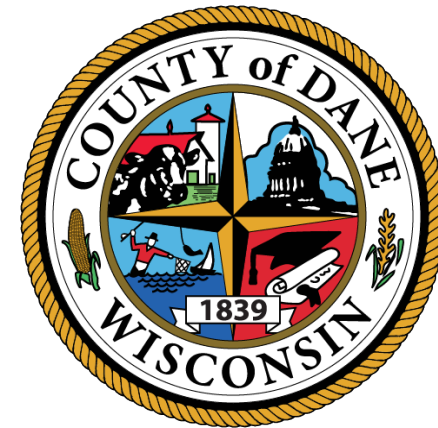


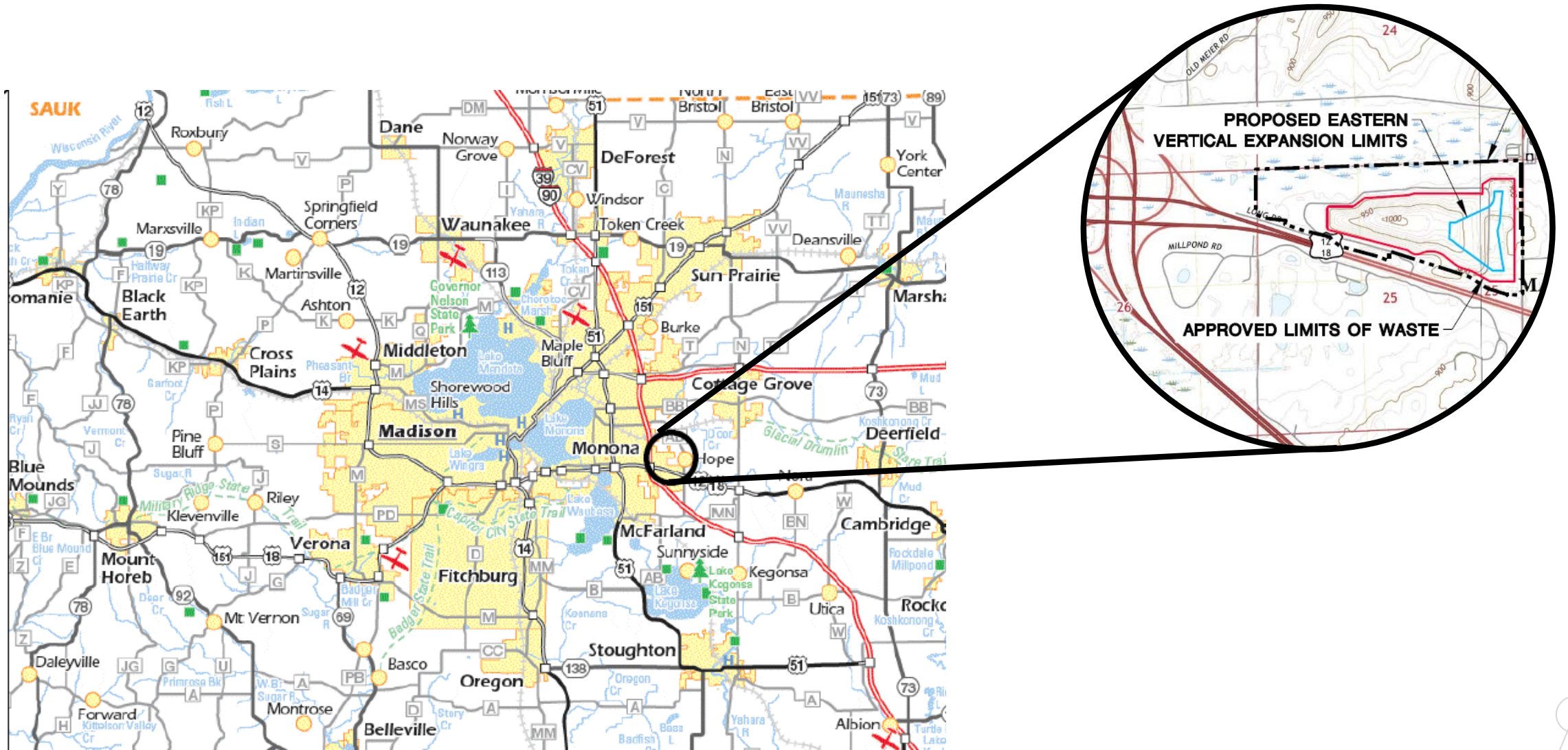


# Eastern Vertical Expansion

Dane County Landfill Site No. 2  
7102 US Hwy 12 & 18, Madison



# Dane County Landfill Site No. 2

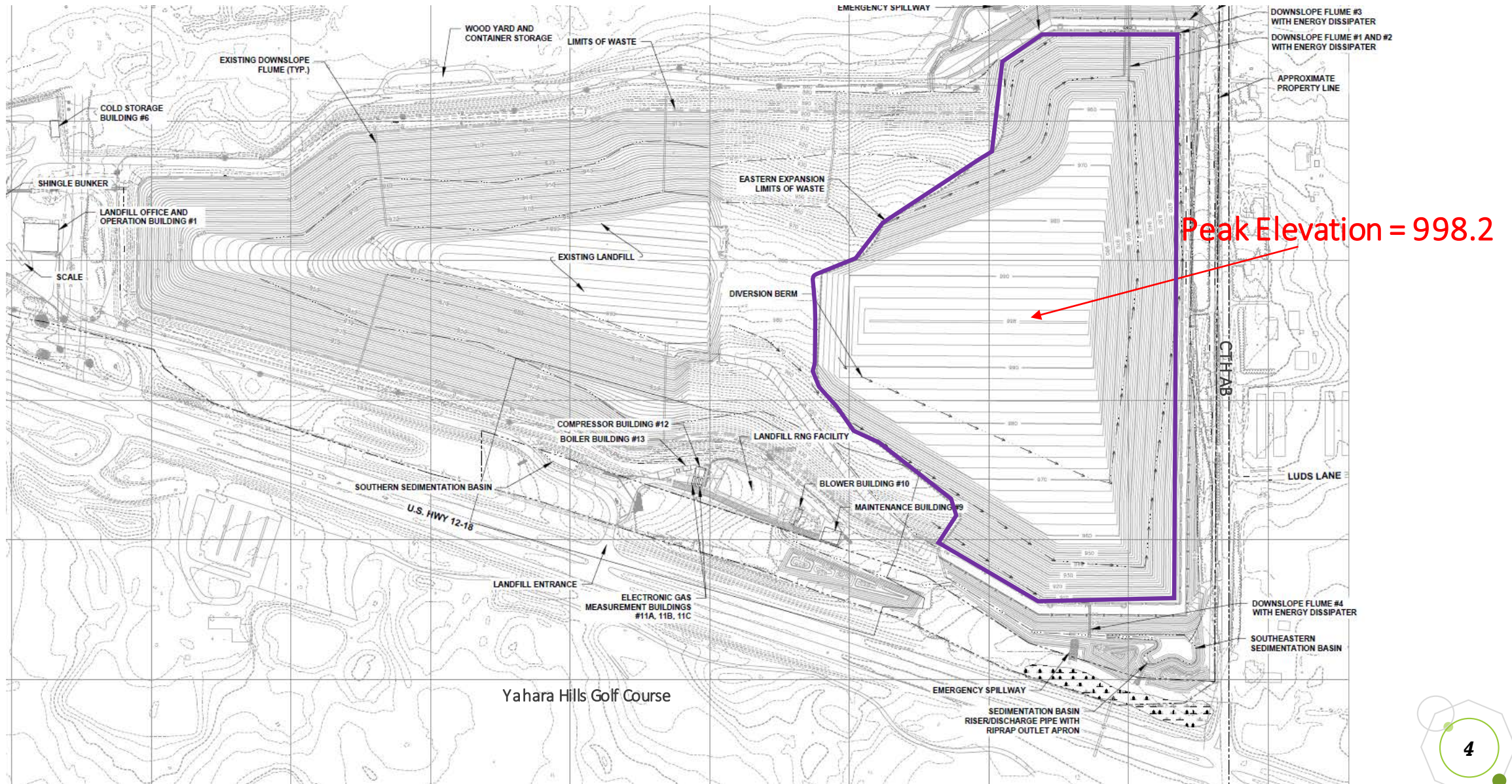




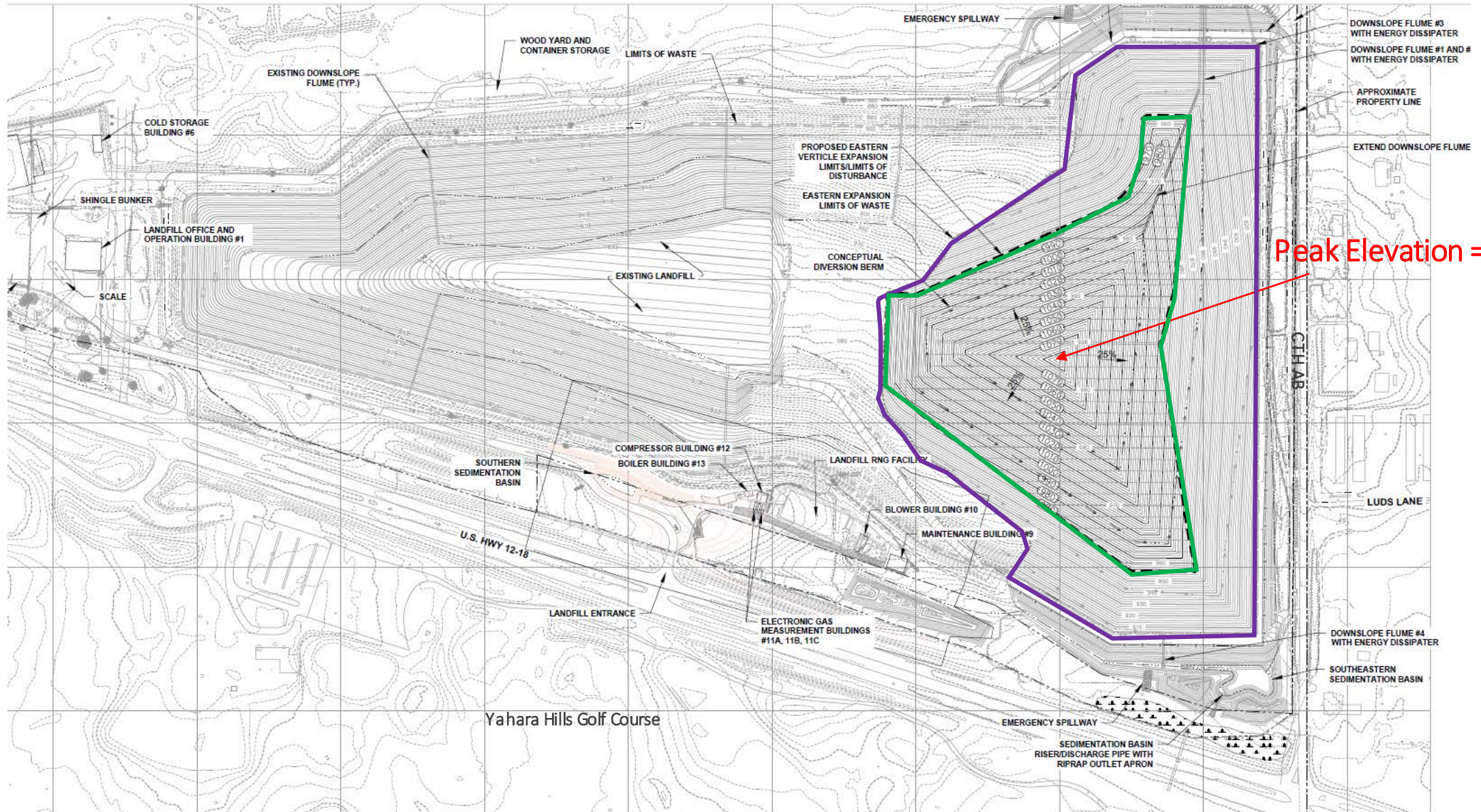
# Summary

- Site history
- Current landfill capacity
- Vertical expansion parameters

# Existing Approved Final Grades



# Proposed Final Grades



Peak Elevation = 1085.7



**VIEWPOINT LOCATION MAP**



**EXISTING CONDITIONS**



**TECHNICAL INFORMATION**

<i>Viewpoint Coordinates in State Plane feet</i>	2,201,417.0 E 383,683.5 N
<i>Viewpoint Location</i>	County Highway AB
<i>Viewer Eye Elevation</i>	872.7 ft msl
<i>Distance to Project</i>	894 feet
<i>Camera Model</i>	Canon EOS 80D
<i>Lens Setting</i>	32 mm
<i>Date/Time</i>	5-22-2020 / 2:21 pm

**DANE COUNTY LANDFILL SITE NO. 2 – EASTERN VERTICAL EXPANSION  
 PHOTO LOCATION #1 (CURRENTLY PERMITTED FINAL COVER GRADES)  
 COUNTY HIGHWAY AB (HOPE LUTHERAN CHURCH PARKING LOT)**





**VIEWPOINT LOCATION MAP**



**EXISTING CONDITIONS**



**TECHNICAL INFORMATION**

<i>Viewpoint Coordinates in State Plane feet</i>	2,201,417.0 E 383,683.5 N
<i>Viewpoint Location</i>	County Highway AB
<i>Viewer Eye Elevation</i>	872.7 ft msl
<i>Distance to Project</i>	894 feet
<i>Camera Model</i>	Canon EOS 80D
<i>Lens Setting</i>	32 mm
<i>Date/Time</i>	5-22-2020 / 2:21 pm

**DANE COUNTY LANDFILL SITE NO. 2 – EASTERN VERTICAL EXPANSION**  
**PHOTO LOCATION #1 (PROPOSED FINAL COVER GRADES – 4:1 SLOPES PEAKED – MAX. ELEVATION 1085.7)**  
**COUNTY HIGHWAY AB (HOPE LUTHERAN CHURCH PARKING LOT)**





**VIEWPOINT LOCATION MAP**



**EXISTING CONDITIONS**



**TECHNICAL INFORMATION**

<i>Viewpoint Coordinates in State Plane feet</i>	2,201,796.8 E 381,185.2 N
<i>Viewpoint Location</i>	Luds Lane
<i>Viewer Eye Elevation</i>	892.5 ft msl
<i>Distance to Project</i>	595 feet
<i>Camera Model</i>	Canon EOS 80D
<i>Lens Setting</i>	32 mm
<i>Date/Time</i>	5-22-2020 / 2:26 pm

**DANE COUNTY LANDFILL SITE NO. 2 – EASTERN VERTICAL EXPANSION  
 PHOTO LOCATION #2 (CURRENTLY PERMITTED FINAL COVER GRADES)  
 LUDS LANE**







**VIEWPOINT LOCATION MAP**



**EXISTING CONDITIONS**



**TECHNICAL INFORMATION**

<i>Viewpoint Coordinates in State Plane feet</i>	2,201,796.8 E 381,185.2 N
<i>Viewpoint Location</i>	Luds Lane
<i>Viewer Eye Elevation</i>	892.5 ft msl
<i>Distance to Project</i>	595 feet
<i>Camera Model</i>	Canon EOS 80D
<i>Lens Setting</i>	32 mm
<i>Date/Time</i>	5-22-2020 / 2:26 pm

**DANE COUNTY LANDFILL SITE NO. 2 – EASTERN VERTICAL EXPANSION**  
**PHOTO LOCATION #2 (PROPOSED FINAL COVER GRADES – 4:1 SLOPES PEAKED – MAX. ELEVATION 1085.7)**  
**LUDS LANE**





**VIEWPOINT LOCATION MAP**



**EXISTING CONDITIONS**



**TECHNICAL INFORMATION**

<i>Viewpoint Coordinates in State Plane feet</i>	2,198,519.3 E 381,005.1 N
<i>Viewpoint Location</i>	US Highway 12 & 18
<i>Viewer Eye Elevation</i>	882.0 ft msl
<i>Distance to Project</i>	510 feet
<i>Camera Model</i>	Canon EOS 80D
<i>Lens Setting</i>	32 mm
<i>Date/Time</i>	5-29-2020 / 2:17 pm

**DANE COUNTY LANDFILL SITE NO. 2 – EASTERN VERTICAL EXPANSION**  
**PHOTO LOCATION #3 (CURRENTLY PERMITTED FINAL COVER GRADES)**  
**WEST OF LANDFILL ENTRANCE ALONG US HIGHWAY 12 & 18**





**VIEWPOINT LOCATION MAP**



**EXISTING CONDITIONS**



**TECHNICAL INFORMATION**

<i>Viewpoint Coordinates in State Plane feet</i>	2,198,519.3 E 381,005.1 N
<i>Viewpoint Location</i>	US Highway 12 & 18
<i>Viewer Eye Elevation</i>	882.0 ft msl
<i>Distance to Project</i>	510 feet
<i>Camera Model</i>	Canon EOS 80D
<i>Lens Setting</i>	32 mm
<i>Date/Time</i>	5-29-2020 / 2:17 pm




**DANE COUNTY LANDFILL SITE NO. 2 – EASTERN VERTICAL EXPANSION**  
**PHOTO LOCATION #3 (PROPOSED FINAL COVER GRADES – 4:1 SLOPES PEAKED – MAX. ELEVATION 1085.7)**  
**WEST OF LANDFILL ENTRANCE ALONG US HIGHWAY 12 & 18**








EVERGREEN TREES    CODE    BOTANICAL / COMMON NAME    CONT    SIZE    QTY

	PA	<i>Picea abies</i> / Norway Spruce	B & B	6' HT (MIN.)	47
	PG	<i>Picea glauca</i> / White Spruce	B & B	5' HT. (MIN)	54
	PD	<i>Picea glauca</i> var. <i>densata</i> / Black Hills Spruce	B & B	5' HT. (MIN)	53
	PS	<i>Pinus strobus</i> / White Pine	B & B	6' HT (MIN.)	61



ORNAMENTAL TREES    CODE    BOTANICAL / COMMON NAME    CONT    SIZE    QTY

	Cv	<i>Crataegus viridis</i> 'Winter King' / Winter King Hawthorn	B & B	1.5'Cal	12
	Md	<i>Malus</i> x 'Donald Wyman' / Donald Wyman Crabapple	B & B	1.5'Cal	24
	Pt	<i>Populus tremuloides</i> / Quaking Aspen	B & B	1.5'Cal	13

SHADE TREES    CODE    BOTANICAL / COMMON NAME    CONT    SIZE    QTY

	AM	<i>Acer miyabei</i> 'Morton' TM / State Street Miyabei Maple	B & B	2"Cal	10
	AF	<i>Acer</i> x <i>freemanii</i> 'Sienna' / Sienna Glen Maple	B & B	2"Cal	11
	CO	<i>Celtis occidentalis</i> 'Chicagoland' / Common Hackberry	B & B	2"Cal	11
	QB	<i>Quercus bicolor</i> / Swamp White Oak	B & B	2"Cal	17
	QM	<i>Quercus macrocarpa</i> / Burr Oak	B & B	2"Cal	16
	UA	<i>Ulmus americana</i> 'Valley Forge' / American Elm	B & B	2" Cal	17

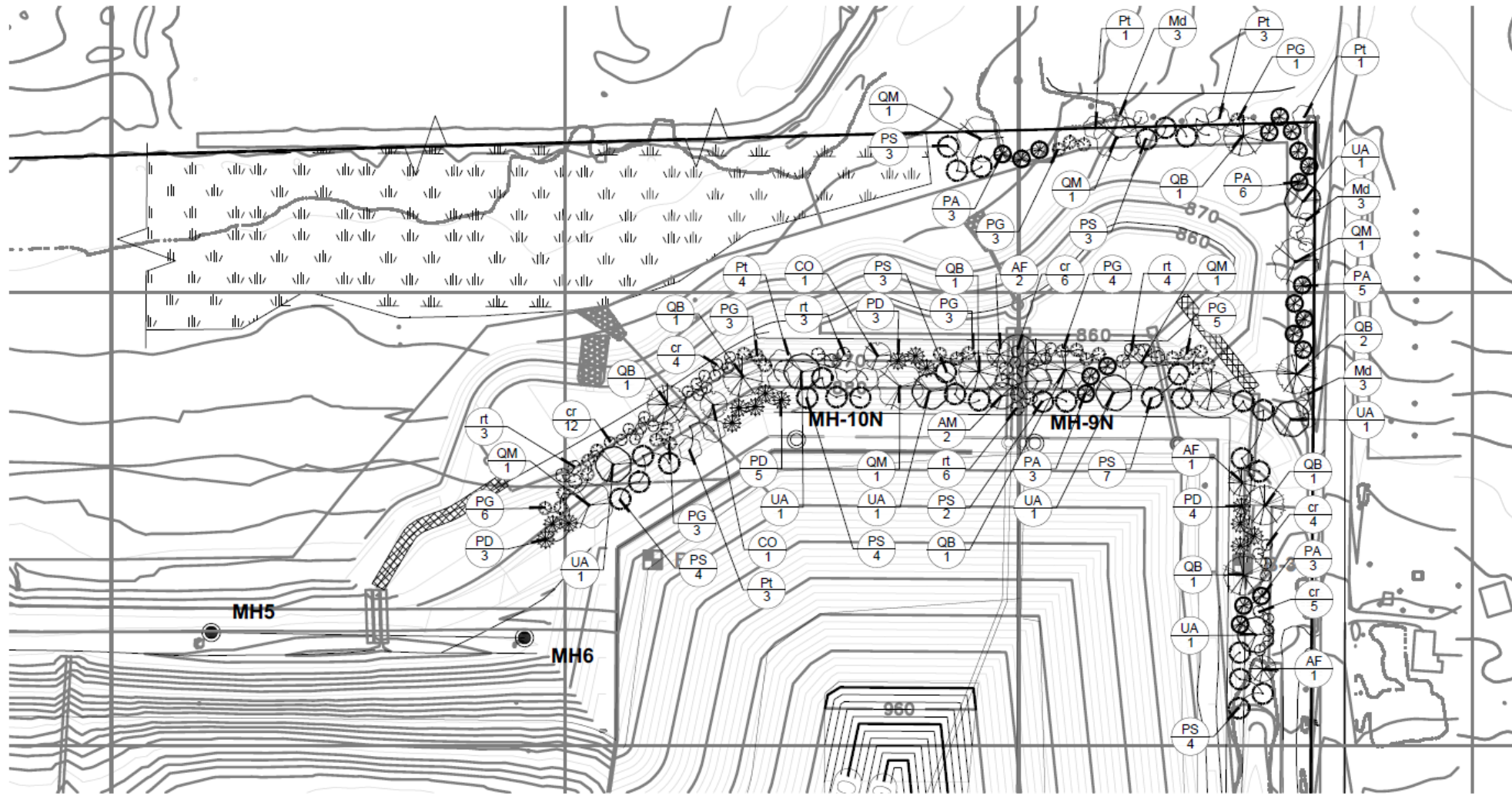
DECIDUOUS SHRUBS    CODE    BOTANICAL / COMMON NAME    CONT    SIZE    QTY

	cr	<i>Cornus racemosa</i> / Gray Dogwood	5 gal		68
	rt	<i>Rhus typhina</i> / Staghorn Sumac	5 gal		49

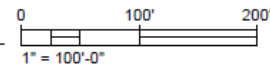
# Plant Schedule

- Similar plan to what was approved for previous Eastern Expansion

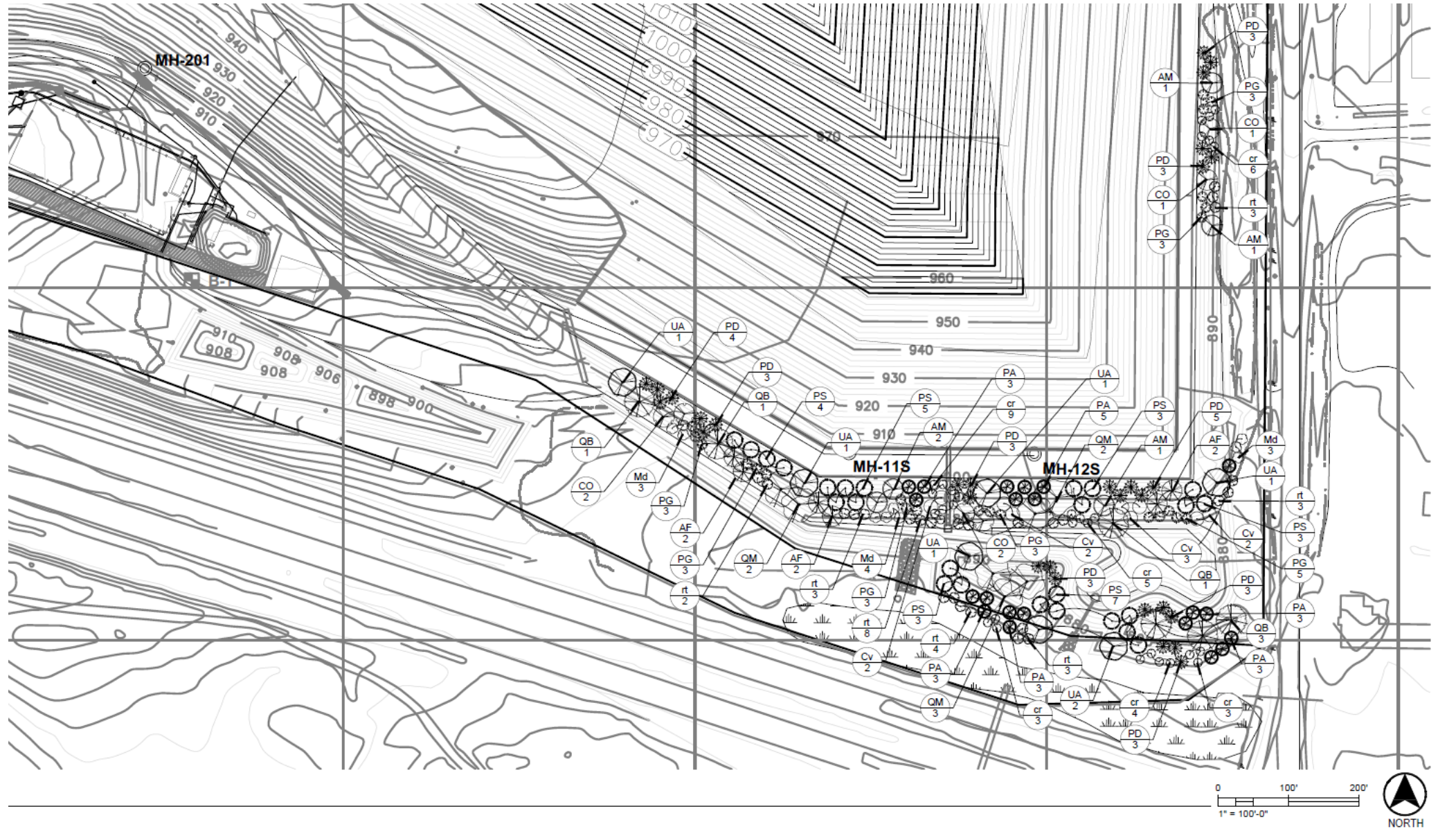
# Proposed Screening – Northeast Area



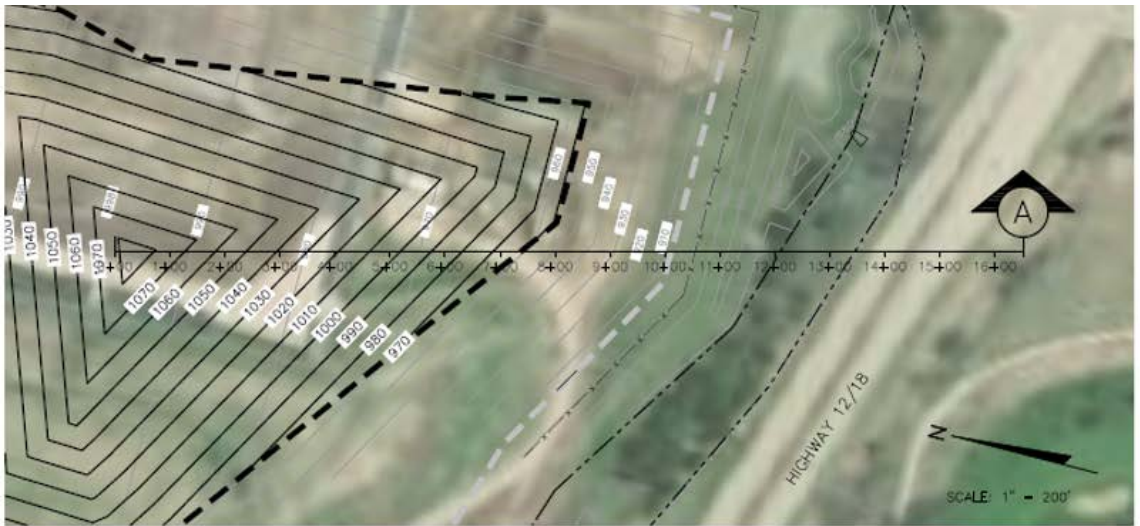
1 Northeast Area  
SCALE: 1" = 100'



# Proposed Screening – Southeast Area



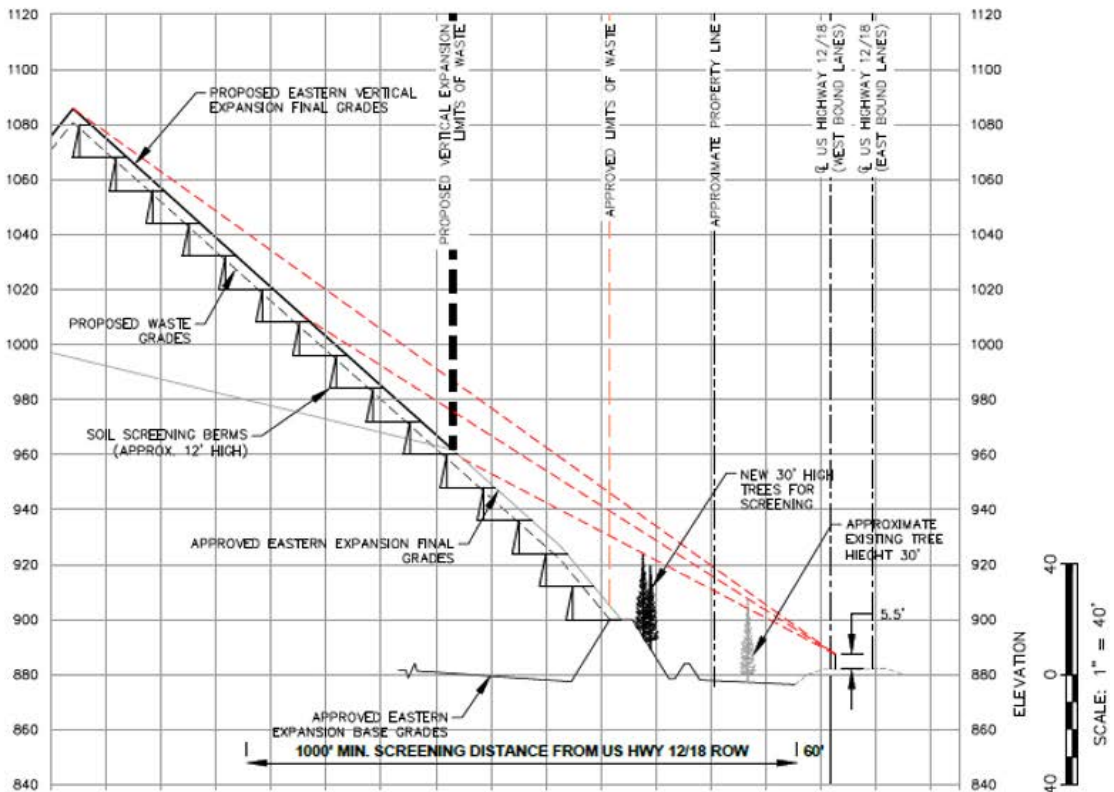
# Line of Sight US Hwy 12 & 18



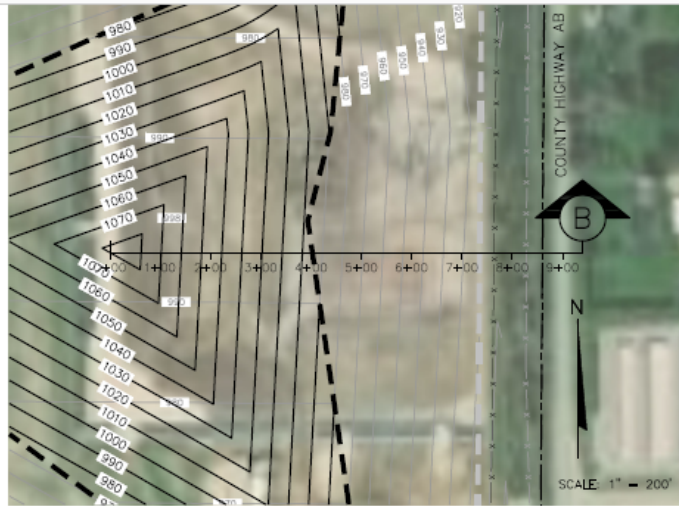
PLAN A

## Screening Measures

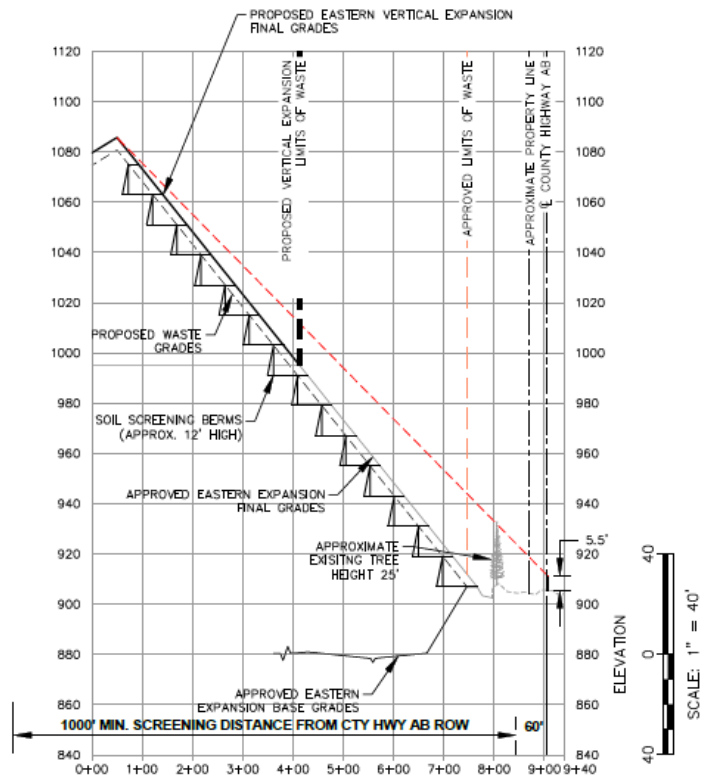
- Screening berms
- Existing and new trees/shrubs
- Soil core berms within waste mass



# Line of Sight CTH AB (North of Luds Ln)



PLAN B

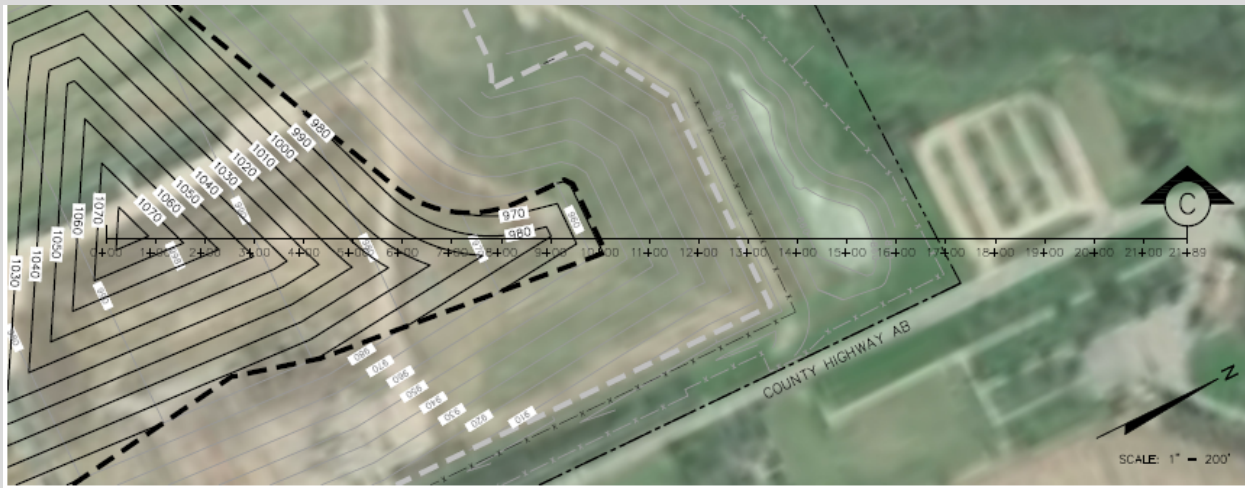


## Screening Measures

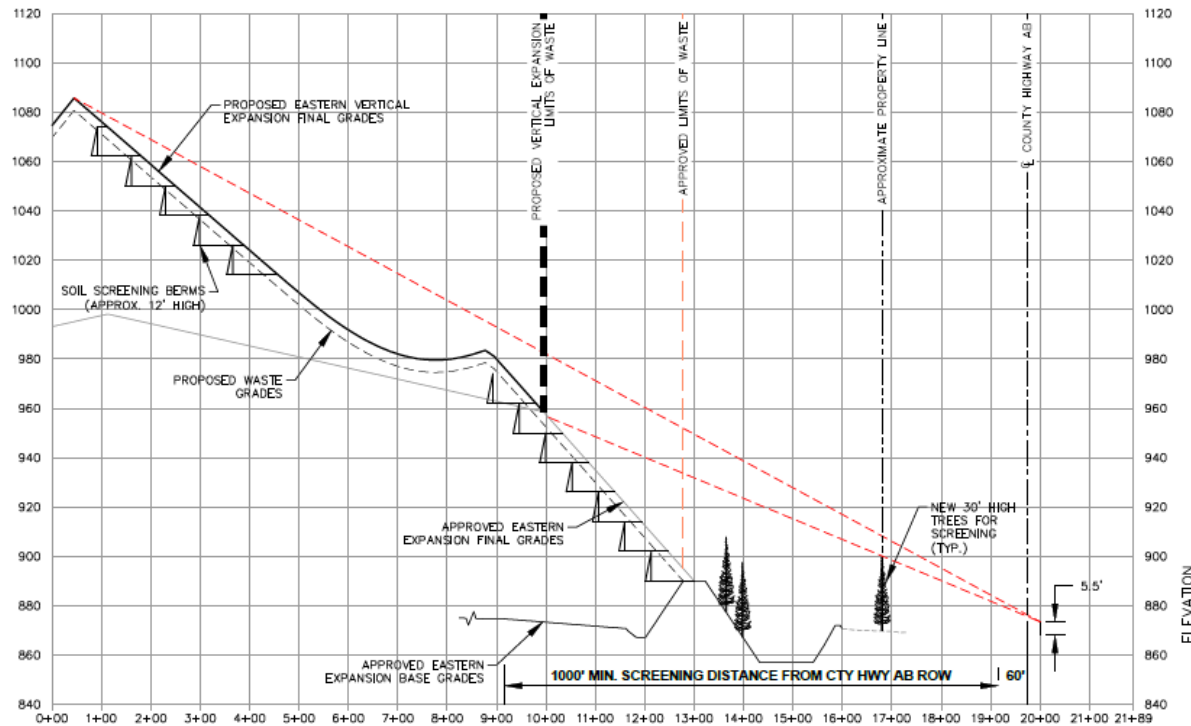
- Screening berms
- Existing trees
- Soil core berms within waste mass



# Line of Sight CTH AB (by Hope Park)



PLAN C



## Screening Measures

- Screening berms
- Existing and new trees/shrubs
- Soil core berms within waste mass



Questions?

