

WATER UTILITY EASEMENT

PART OF LANDS DEDICATED TO THE PUBLIC EAST OF AND ADJACENT TO LOTS 89, 97 THROUGH 100, FIRST ADDITION TO ALLIED TERRACE, ACCORDING TO THE RECORDED PLAT THEREOF, LOCATED IN THE SE ¼ OF THE NW ¼ OF SECTION 05, TOWNSHIP 06 NORTH, RANGE 09 EAST, CITY OF MADISON, DANE COUNTY, WISCONSIN.

APPROXIMATE AREA =
4,424 SQ. FT.

L A N D S
D E D I C A T E D
T O T H E
P U B L I C

F I R S T

A D D I T I O N

L O T 9 0

T O A L L I E D

L O T 8 9

T E R R A C E

20' WIDE PUBLIC WATER
UTILITY EASEMENT

SE CORNER
LOT 89

(60' R/W)

P.O.B.

C R E S C E N T R O A D



SCALE : ONE INCH = THIRTY FEET

Burse

surveying & engineering INC.

1400 E. Washington Ave, Suite 158
Madison, WI 53703 608.250.9263
Fax: 608.250.9266
email: burse@chorus.net
www.bursesurveyengr.com

SURVEYED FOR:

CITY OF MADISON ENGINEERING DIVISION
210 MARTIN LUTHER KING, JR. BVLD.
MADISON, WI 53703

Date: JUNE 22, 2009

Plot View: Madison Parcel

\\BSE1225\B-21 Cannonball Path\EASEMENT\EASE.DWG

FN: BSE1225-B21

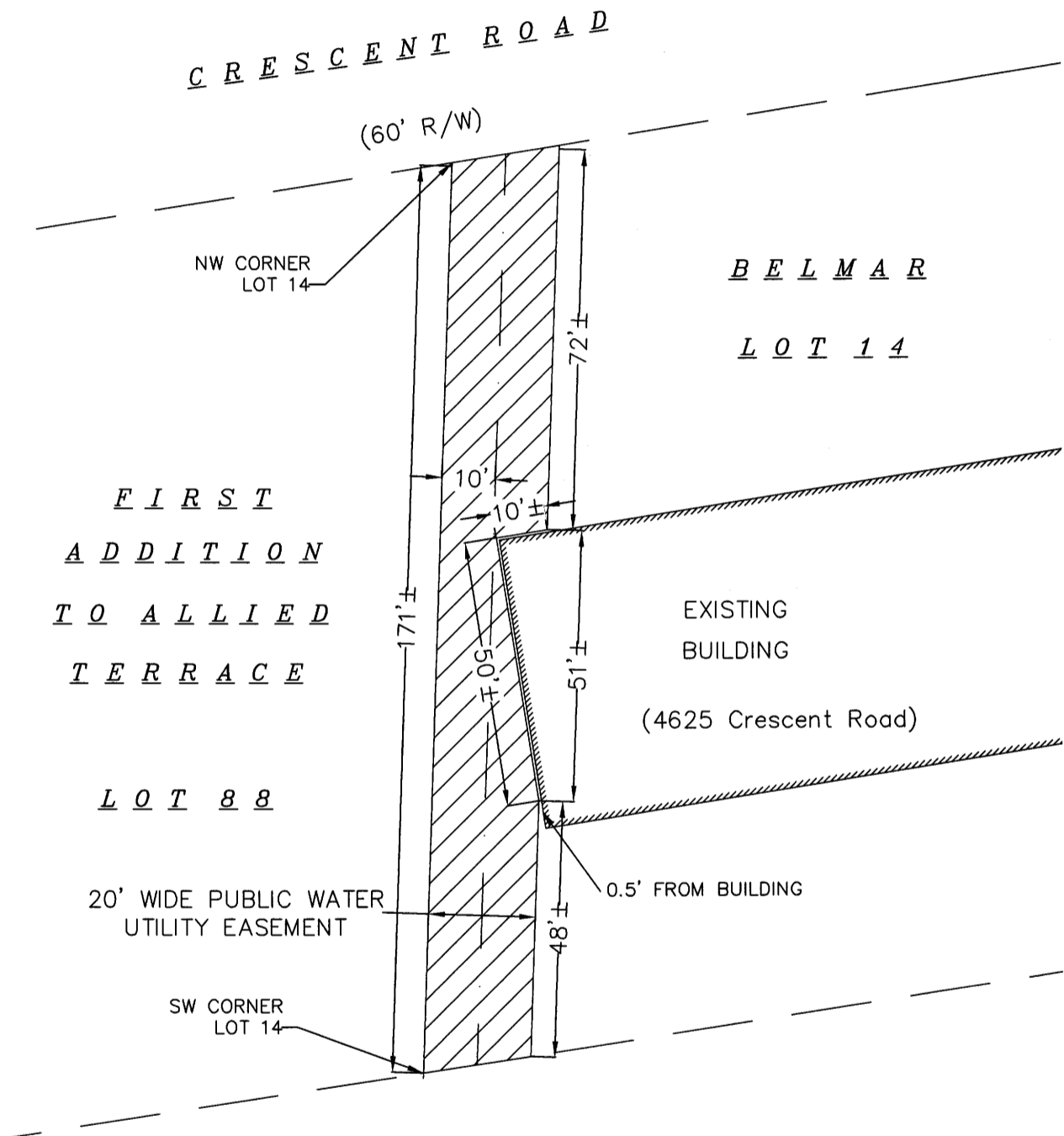
SHEET 1 OF 1

WATER UTILITY EASEMENT

PART OF LOT 14, BELMAR, ACCORDING TO THE RECORDED PLAT THEREOF,
 LOCATED IN THE SE 1/4 OF THE NW 1/4 OF SECTION 05, T06N, R09E,
 CITY OF FITCHBURG, DANE COUNTY, WISCONSIN.



SCALE : ONE INCH = THIRTY FEET



APPROXIMATE AREA = 3,188 SQ. FT.

SURVEYED FOR:
 CITY OF MADISON ENGINEERING DIVISION
 210 MARTIN LUTHER KING, JR. BVLD.
 MADISON, WI 53703



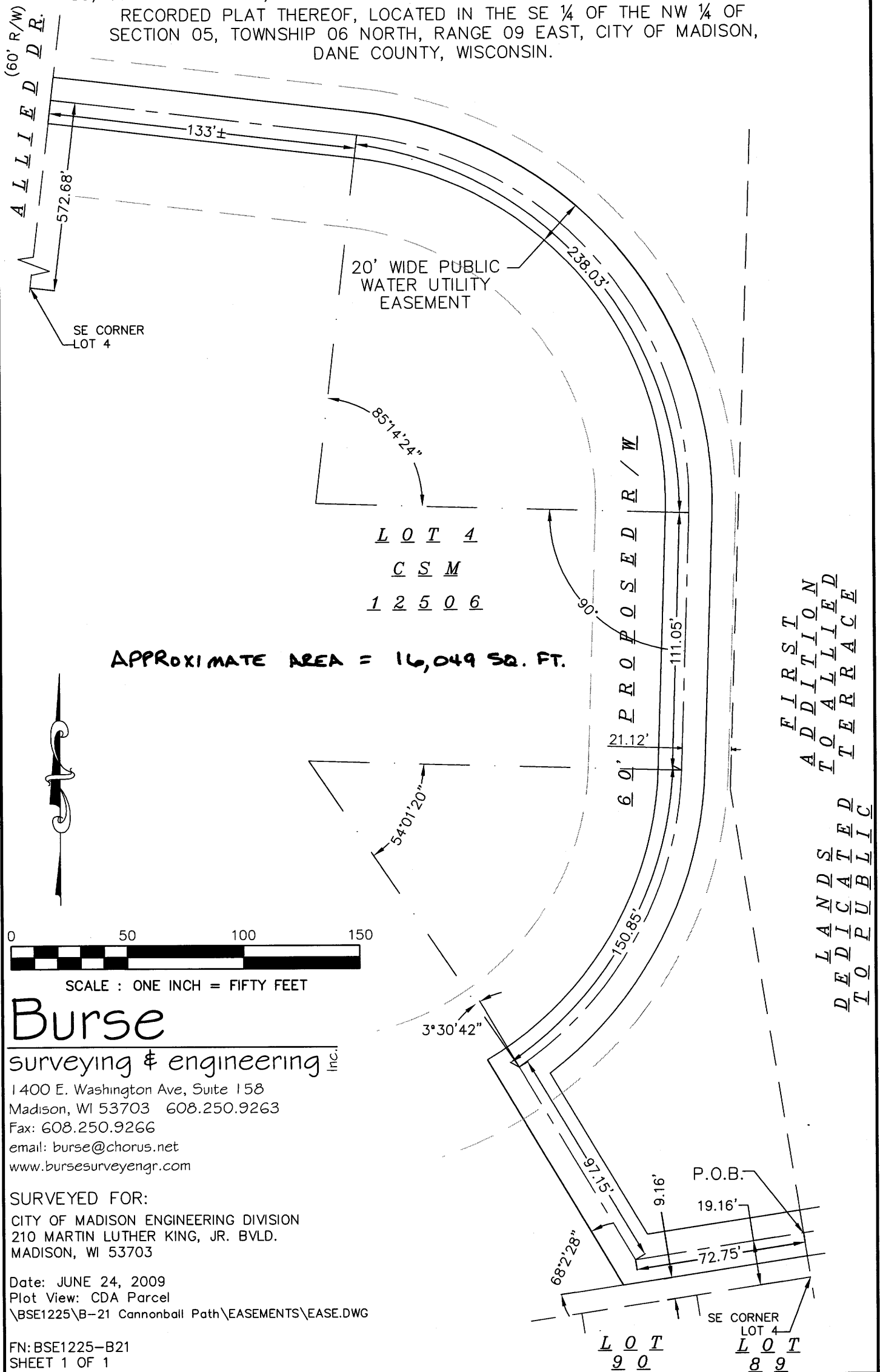
Burse

surveying & engineering Inc.

1400 E. Washington Ave, Suite 158
 Madison, WI 53703 608.250.9263
 Fax: 608.250.9266
 email: burse@chorus.net
 www.bursesurveyengr.com

WATER UTILITY EASEMENT

PART OF LANDS DEDICATED TO THE PUBLIC EAST OF AND ADJACENT TO LOTS 89, 97 THROUGH 100, FIRST ADDITION TO ALLIED TERRACE, ACCORDING TO THE RECORDED PLAT THEREOF, LOCATED IN THE SE ¼ OF THE NW ¼ OF SECTION 05, TOWNSHIP 06 NORTH, RANGE 09 EAST, CITY OF MADISON, DANE COUNTY, WISCONSIN.



SCALE : ONE INCH = FIFTY FEET

Burse

surveying & engineering INC.

1400 E. Washington Ave, Suite 158
 Madison, WI 53703 608.250.9263
 Fax: 608.250.9266
 email: burse@chorus.net
 www.bursesurveyengr.com

SURVEYED FOR:
 CITY OF MADISON ENGINEERING DIVISION
 210 MARTIN LUTHER KING, JR. BVLD.
 MADISON, WI 53703

Date: JUNE 24, 2009
 Plot View: CDA Parcel
 \BSE1225\B-21 Cannonball Path\EASEMENTS\EASE.DWG

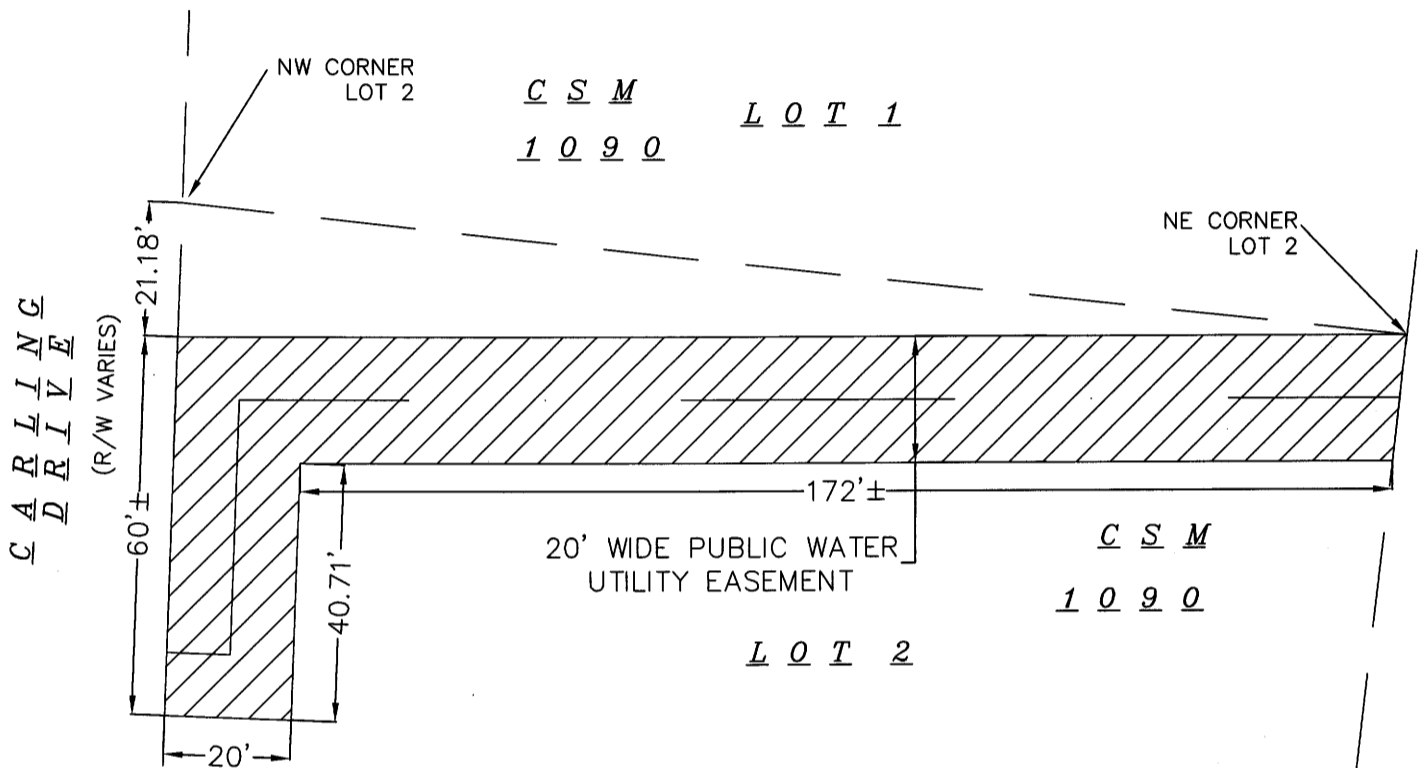
FN: BSE1225-B21
 SHEET 1 OF 1

WATER UTILITY EASEMENT

PART OF LOT 2, CERTIFIED SURVEY MAP NO. 1090, VOLUME 4, PAGE 389 OF
 CERTIFIED SURVEY MAPS, LOCATED IN THE NW 1/4 OF THE NW 1/4 OF
 SECTION 05, T06N, R09E, CITY OF MADISON, DANE COUNTY, WISCONSIN.



SCALE : ONE INCH = THIRTY FEET



APPROXIMATE AREA = 4,664 SQ.FT.



SURVEYED FOR:

CITY OF MADISON ENGINEERING DIVISION
 210 MARTIN LUTHER KING, JR. BVLD.
 MADISON, WI 53703

Burse

surveying & engineering INC.

1400 E. Washington Ave, Suite 158
 Madison, WI 53703 608.250.9263
 Fax: 608.250.9266
 email: burse@chorus.net
 www.bursesurveyengr.com