

**Urban Design Commission**

Reference: 3001 S. Stoughton Road  
Dimension IV – Madison Project No. 08014

In response to your review comments, we have incorporated the following design revisions into the project:

**Landscape Plan**

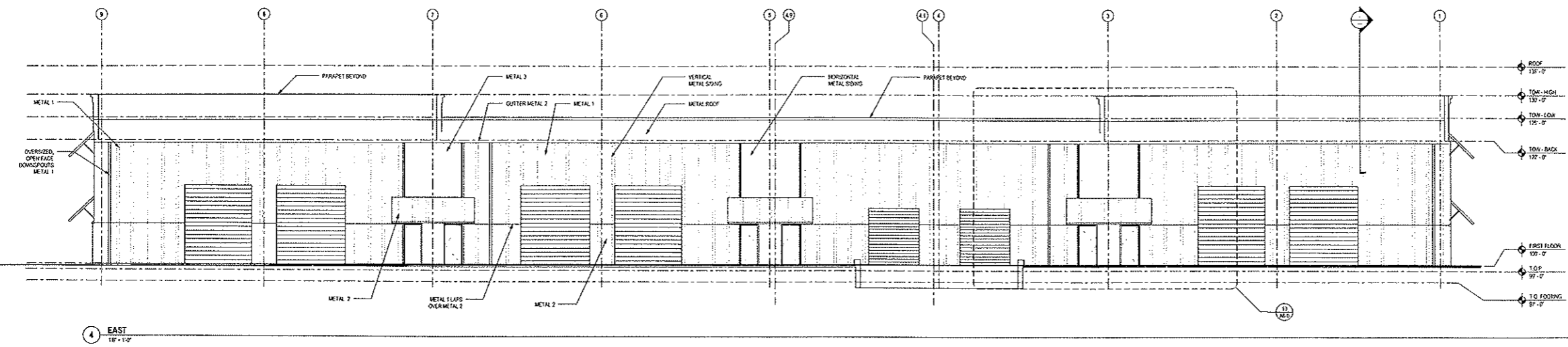
- The four Prairie Fire Crabs in the Parking Lot have been changed to Kentucky Coffee Trees.

**Building Elevation**

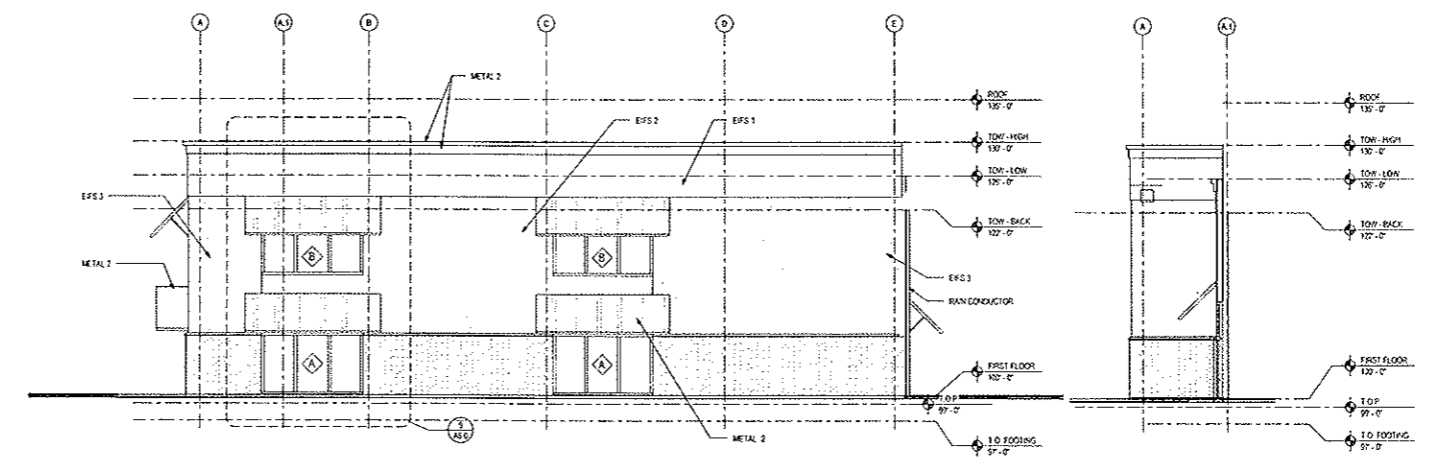
- Awnings have been added to the upper side windows to provide protection from the summer.
- Awnings have been added over the upper windows above the main entrances. The awnings have a curved bottom edge to complement the curved entrance awnings.
- The detailing of the Capital of the building has been revised to be less ornate. It is a simple, wider band.
- The window openings have been grouped and detailed to be treated as a larger wall opening. Color changes are used to accent the area.
- The ornate piers at the corners have been deleted.

**MADISON TURNERS**

3001 S. STOUTINGTON ROAD,  
 MADISON, WI

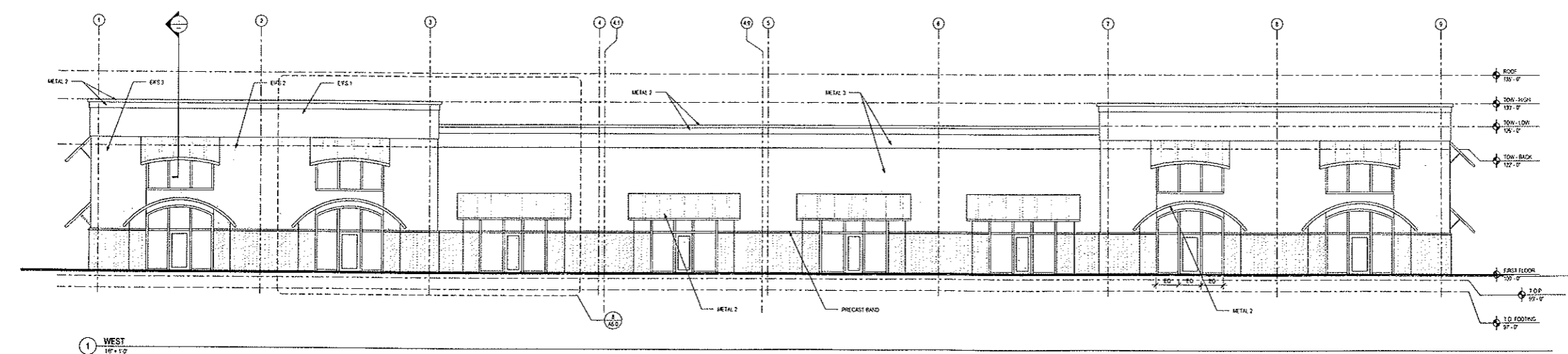


4 EAST  
 1/8" = 1'-0"



3 EAST (WEST - SIMILAR / MIRROR)  
 1/8" = 1'-0"

2 HIDDEN ELEVATION  
 1/8" = 1'-0"



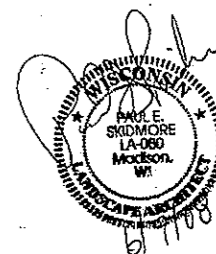
1 WEST  
 1/8" = 1'-0"

DATE OF ISSUE: 06-11-08

PROJECT # 08014

**EXTERIOR ELEVATIONS**

**A2.0**

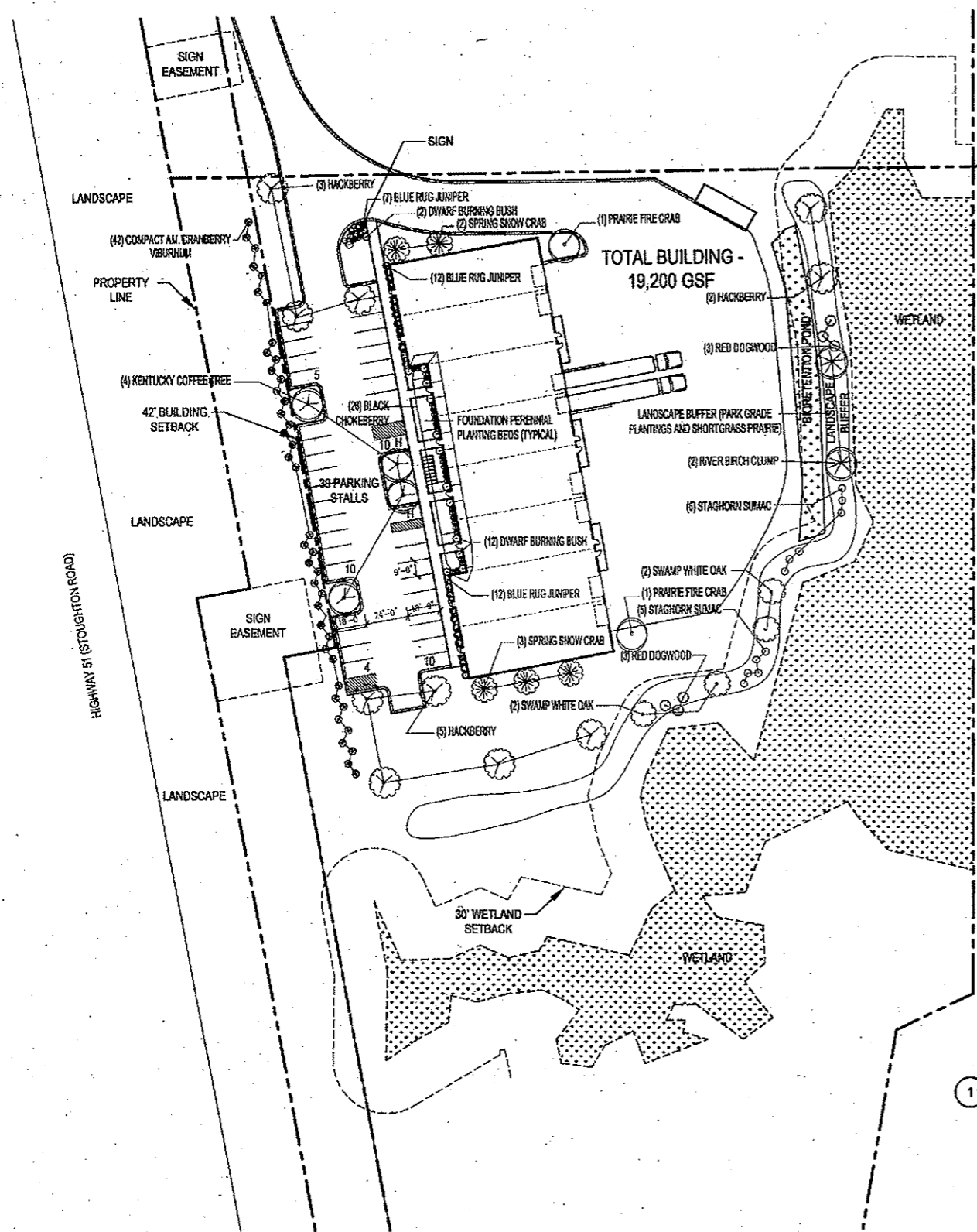


DATE OF ISSUE: 06/09/08

PROJECT NO: 08014

LANDSCAPE PLAN

**L1.0**



PLANT LIST

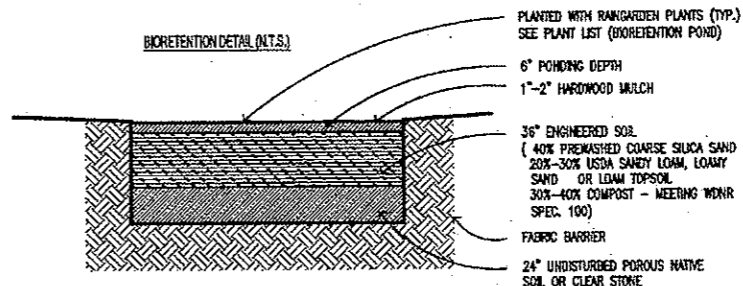
QUANTITY	SIZE	TYPE	ROOT
4	8"	RIVER BIRCH CLUMP	BB
10	2"	HACKBERRY	BB
4	2"	SWAMP WHITE OAK	BB
4	1 1/2"	KENTUCKY COFFEE TREE	BB
2	1 1/2"	PRAIRIE FIRE CRAB	BB
5	1 1/2"	SPRING SNOW CRAB	BB
14	24"	DWARF BURNING BUSH	CONT.
11	18"	RED DOGWOOD	CONT.
3	18"	GREY DOGWOOD	CONT.
42	24"	COMPACT AM. CRANBERRY VIBURNUM	CONT.
26	15"	BLACK CHOKEBERRY	CONT.
11	18"	STAGHORN SUMAC	CONT.
31	15"	BLUE RUG JUNIPER	CONT.
PERENNIALS			
20	1 QT.	STELLA DE ORO DAY LILY	CONT.
20	1 QT.	SUMMER WISE DAY LILY	CONT.
20	1 QT.	AUTUMN JOY SEDUM	CONT.
20	1 QT.	PURPLE PALACE CORAL BELLS	CONT.
20	1 QT.	HOSTA (ASSORTED)	CONT.
20	1 QT.	ASTILBE (ASSORTED)	CONT.
20	1 QT.	ASTER	CONT.
20	1 QT.	BLACK EYED SUSAN	CONT.
20	1 QT.	IRIS (ASSORTED)	CONT.
20	1 QT.	LITTLE BLUE STEM	CONT.

BIORETENTION POND

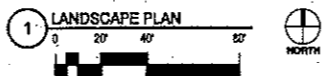
QUANTITY	CORRECTION NAME
30	COMMON BLUE STAR
55	BOTTLE GENTIAN
55	OBEDIENT PLANT
30	MONKEY FLOWER
55	WAGLA SWEETGRASS
55	COLUMBINE
55	SWITCHGRASS
55	FOXSGRASS
60	BLACK EYED SUSAN
55	BLUE FLAG IRIS
30	WILD IRIS
55	RED MILKWEED
55	WHITE TURTLEHEAD
55	QUEEN OF THE PRAIRIE
40	CARDINAL FLOWER
30	TURKS CAP LILY
90	BIG BLUESTEM
40	CANADA WILD RYE
30	HOODING ONION
55	CULVERS ROOT
30	GREAT BLUE LOBELIA

- BIORETENTION POND NOTES:
1. 1040 S.F. AREA, PLANTS SPACED 12"
  2. 1"-2" PLUGS
  3. BIORETENTION POND WILL BE CONSTRUCTED PER CITY OF MADISON AND WISCONSIN DEPARTMENT OF NATURAL RESOURCES SPECIFICATIONS

BIORETENTION DETAIL (N.T.S.)



- NOTES:
1. ALL LAWN AREAS IN FRONT (WEST) OF BUILDING TO RECEIVE TOPSOIL, SEED (MADISON PARKS), FERTILIZER, AND MULCH.
  2. ALL LAWN AREAS IN LANDSCAPE BUFFER TO RECEIVE TOPSOIL, SEE (SHORTGRASS PRAIRIE), FERTILIZER, AND MULCH.
  3. ALL PLANTING BEDS AND TREE RINGS TO RECEIVE 3" SHREDDED HARDWOOD BARK MULCH.
  4. ALL PLANTING BEDS TO BE SEPARATED FROM LAWN AREAS WITH 5" VINYL EDGE.
  5. FOUNDATION PERENNIAL PLANTING BEDS: PLANT PERENNIALS 18" O.C. - PERENNIAL PLANTING BEDS TO RECEIVE 1 1/2" SHREDDED HARDWOOD BARK MULCH. NO VINYL EDGE SHALL BE PLACED BETWEEN PLANTING BEDS AND PERENNIAL BEDS.







**DIMENSION IV**  
Madison Design Group  
architecture • engineering • interior design