

Madison, Wisconsin

CITY OF MADISON

CITY ENGINEERING DIVISION
DEPARTMENT OF PUBLIC WORKS
PLAN OF PROPOSED IMPROVEMENT
GREENTREE HILLS LANDFILL
WEST HEADER REPLACEMENT

INDEX OF SHEETS

SHEET NO. 1	TITLE SHEET
SHEET NO. 2	PROJECT OVERVIEW
SHEET NO. D1-D5	DETAILS

PUBLIC IMPROVEMENT PROJECT APPROVED

APPROVED DATE

BY THE COMMON COUNCIL OF MADISON, WISCONSIN

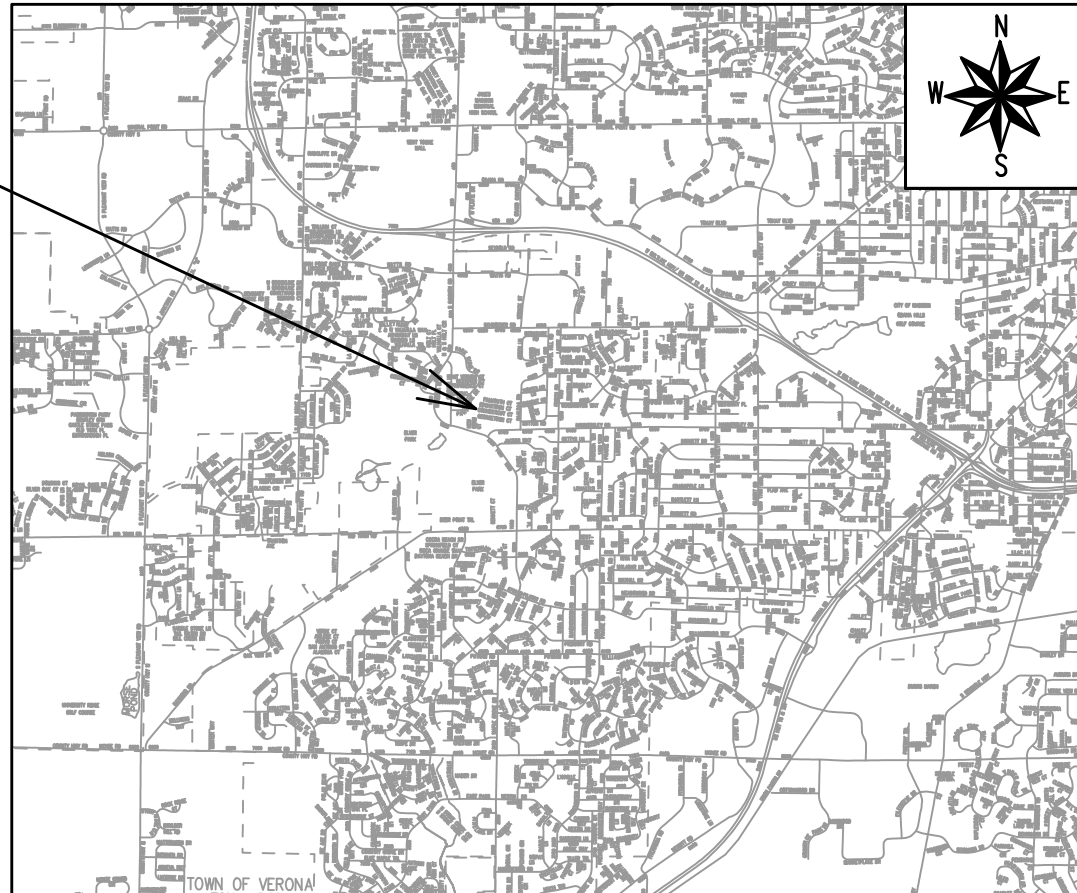
PUBLIC IMPROVEMENT DESIGN APPROVED BY:

City Engineer

Date

CITY PROJECT NO. 13491
CONTRACT NO. 9035

PROJECT LOCATION



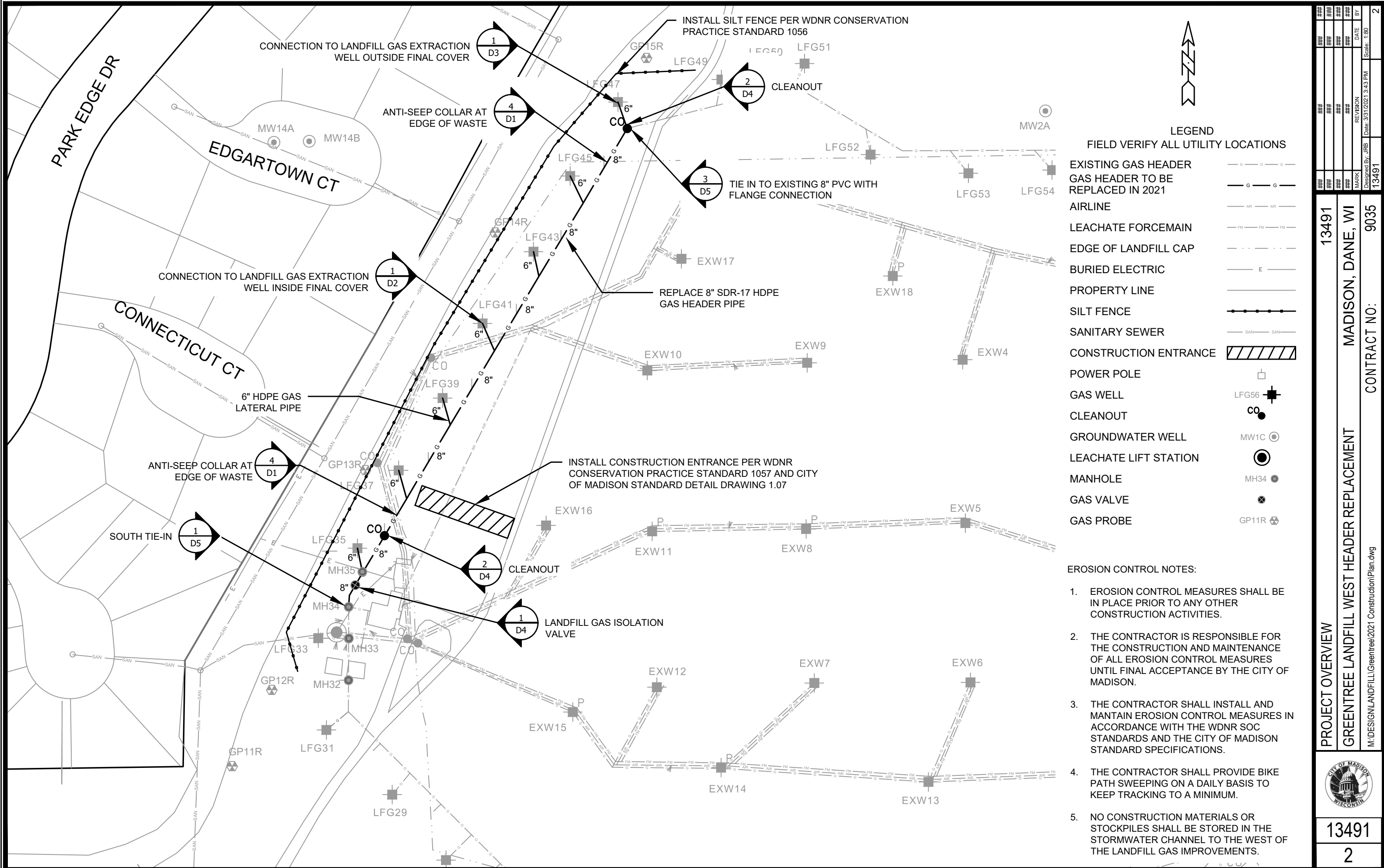
LANDFILL GAS DESIGNED BY:

PLOT SCALE: 1:1_XREF

PLOT NAME: ---

REV. DATE: 3/19/2021 2:05 PM

ORIGINATOR: CITY_OF_MADISON



LEGEND
FIELD VERIFY ALL UTILITY LOCATIONS

EXISTING GAS HEADER	---
GAS HEADER TO BE REPLACED IN 2021	---
AIRLINE	---
LEACHATE FORCEMAIN	---
EDGE OF LANDFILL CAP	---
BURIED ELECTRIC	---
PROPERTY LINE	---
SILT FENCE	---
SANITARY SEWER	---
CONSTRUCTION ENTRANCE	▨
POWER POLE	□
GAS WELL	LFG56
CLEANOUT	CO
GROUNDWATER WELL	MW1C
LEACHATE LIFT STATION	●
MANHOLE	MH34
GAS VALVE	⊗
GAS PROBE	GP11R

- EROSION CONTROL NOTES:**
1. EROSION CONTROL MEASURES SHALL BE IN PLACE PRIOR TO ANY OTHER CONSTRUCTION ACTIVITIES.
 2. THE CONTRACTOR IS RESPONSIBLE FOR THE CONSTRUCTION AND MAINTENANCE OF ALL EROSION CONTROL MEASURES UNTIL FINAL ACCEPTANCE BY THE CITY OF MADISON.
 3. THE CONTRACTOR SHALL INSTALL AND MAINTAIN EROSION CONTROL MEASURES IN ACCORDANCE WITH THE WDNR SOC STANDARDS AND THE CITY OF MADISON STANDARD SPECIFICATIONS.
 4. THE CONTRACTOR SHALL PROVIDE BIKE PATH SWEEPING ON A DAILY BASIS TO KEEP TRACKING TO A MINIMUM.
 5. NO CONSTRUCTION MATERIALS OR STOCKPILES SHALL BE STORED IN THE STORMWATER CHANNEL TO THE WEST OF THE LANDFILL GAS IMPROVEMENTS.

DESIGNED BY: JRB	DATE: 1/30
REVISION	DATE
MARK	BY
13491	2

PROJECT OVERVIEW

13491

MADISON, DANE, WI

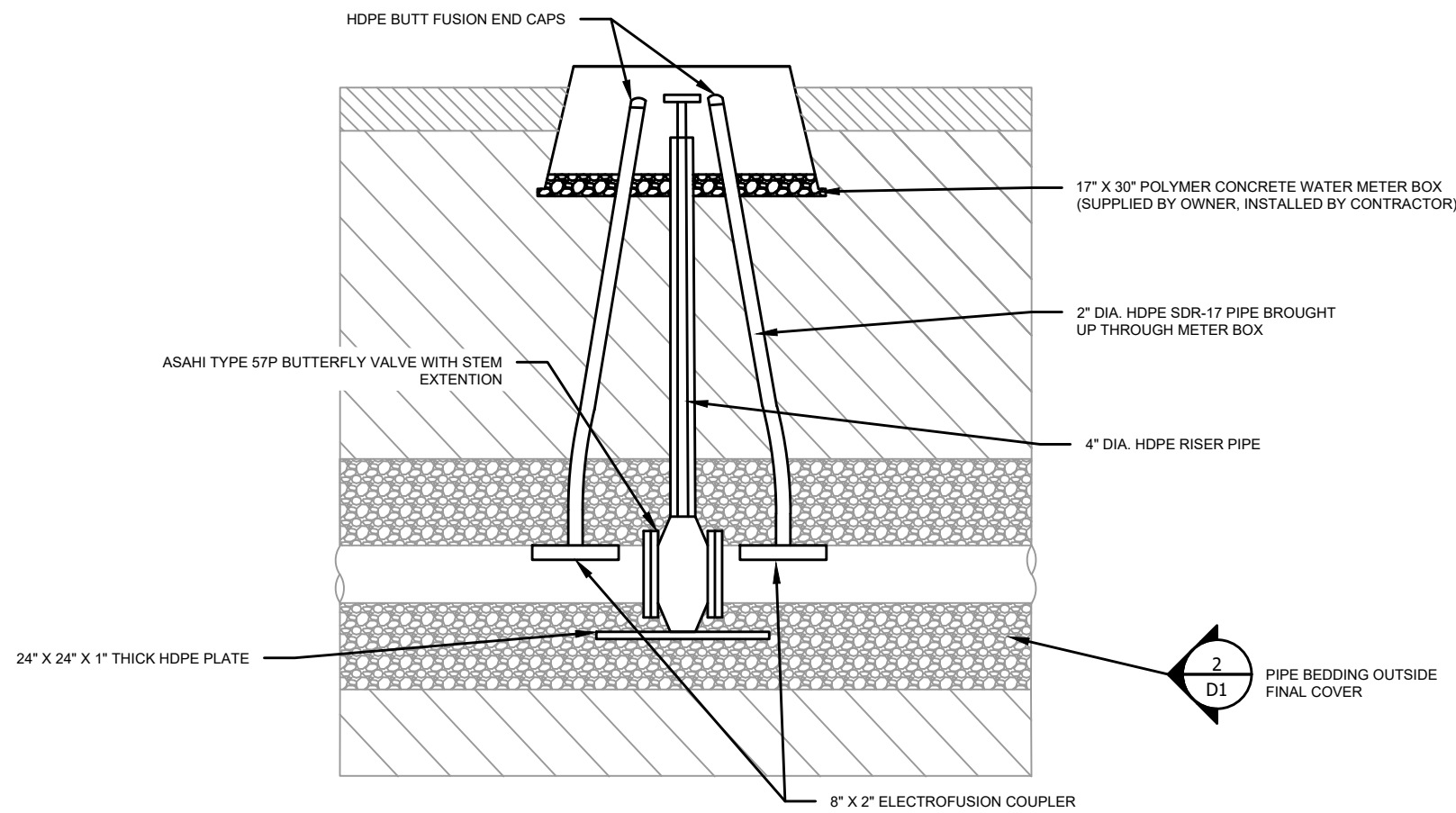
GREENTREE LANDFILL WEST HEADER REPLACEMENT

CONTRACT NO: 9035

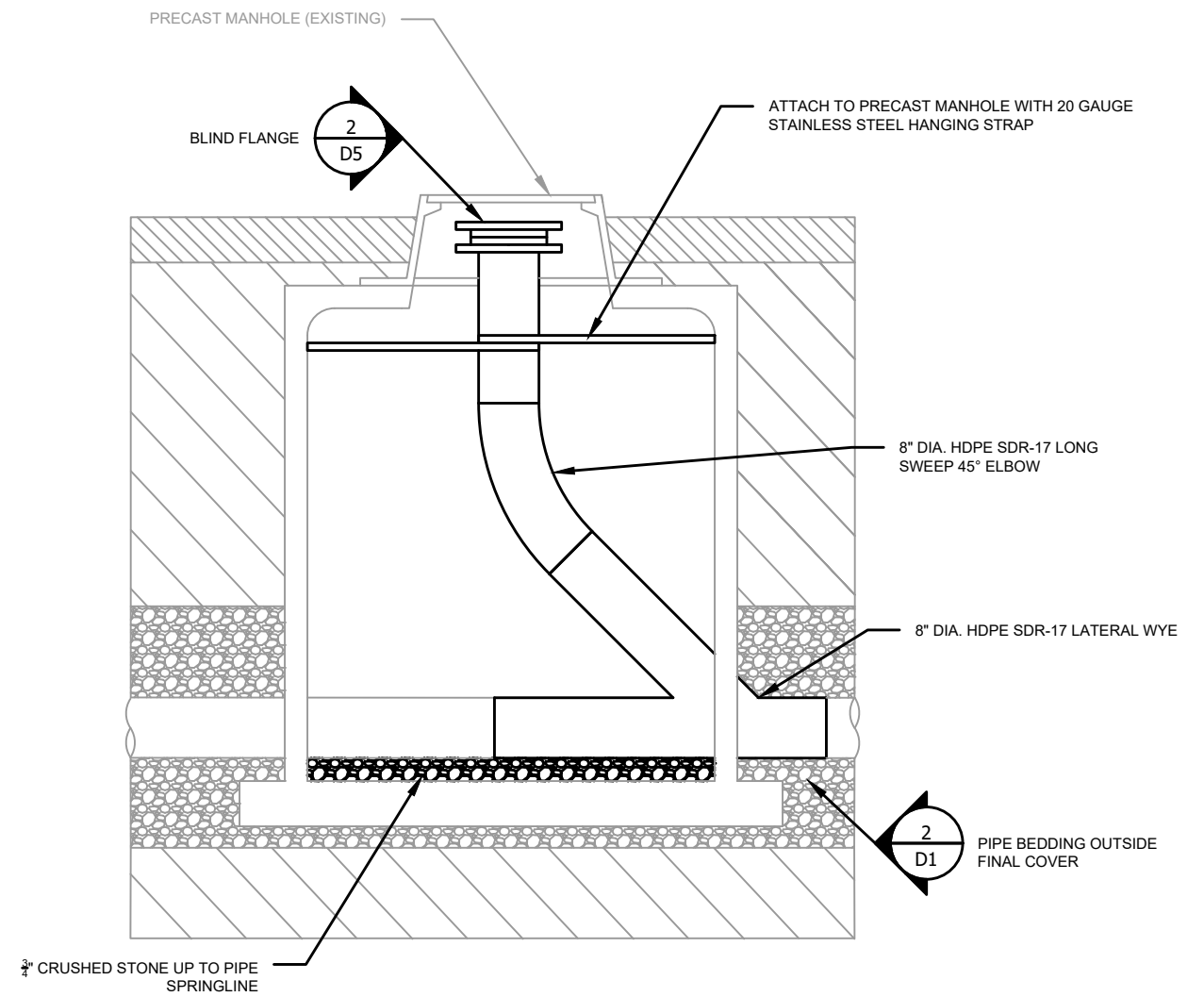
M:\DESIGN\LANDFILL\Greentree\2021 Construction\Plan.dwg

13491

2



1 LANDFILL GAS ISOLATION VALVE
Scale: 1" = 2'



2 CLEANOUT
Scale: 1" = 2'

MARK	REVISION	DATE	BY
###	###	###	###
###	###	###	###
###	###	###	###
###	###	###	###

13491
MADISON, DANE, WI
CONTRACT NO: 9035

DETAILS 4
GREENTREE LANDFILL WEST HEADER REPLACEMENT
M:\DESIGN\LANDFILL\Greentree\2021 Construction\Details2.dwg



13491
D4

Designed By: JRB
Date: 3/31/2021 4:03 PM
Scale: 1" = 2'
D4

