



eppstein uhen : architects

milwaukee 333 East Chicago Street
Milwaukee, Wisconsin 53202
telephone 414.271.5350
madison 309 West Johnson Street, Suite 202
Madison, Wisconsin 53703
telephone 608.442.5350

PROJECT INFORMATION

**STONE HOUSE
MIXED USE EAST
WASHINGTON**

1000 E.
WASHINGTON
MADISON, WI 53703

ISSUANCE AND REVISIONS

LAND USE APPLICATION
UDC FINAL REVIEW

#	DATE	DESCRIPTION

SHEET INFORMATION

**PROGRESS DOCUMENTS
NOT FOR CONSTRUCTION**

These documents reflect progress and intent and may be subject to change, including additional detail. These are not final construction documents and should not be used for final bidding or construction-related purposes.

PROJECT MANAGER JP

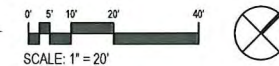
PROJECT NUMBER 14339-01

DATE 12/28/2015

**LEVEL 04 FLOOR
PLAN**

A07

1 LEVELS 04 - 10 FLOOR PLAN (TYPICAL)
1" = 20'-0"





epstein uhen : architects

milwaukee 333 East Chicago Street
Milwaukee, Wisconsin 53202
telephone 414.271.5350
madison 309 West Johnson Street, Suite 202
Madison, Wisconsin 53703
telephone 608.442.5350

PROJECT INFORMATION

STONE HOUSE
MIXED USE EAST
WASHINGTON

1000 E.
WASHINGTON
MADISON, WI 53703

ISSUANCE AND REVISIONS

LAND USE APPLICATION
UDC FINAL REVIEW

#	DATE	DESCRIPTION

SHEET INFORMATION

**PROGRESS DOCUMENTS
NOT FOR CONSTRUCTION**

These documents reflect progress and intent and may be subject to change, including additional detail. These are not final construction documents and should not be used for final bidding or construction-related purposes.

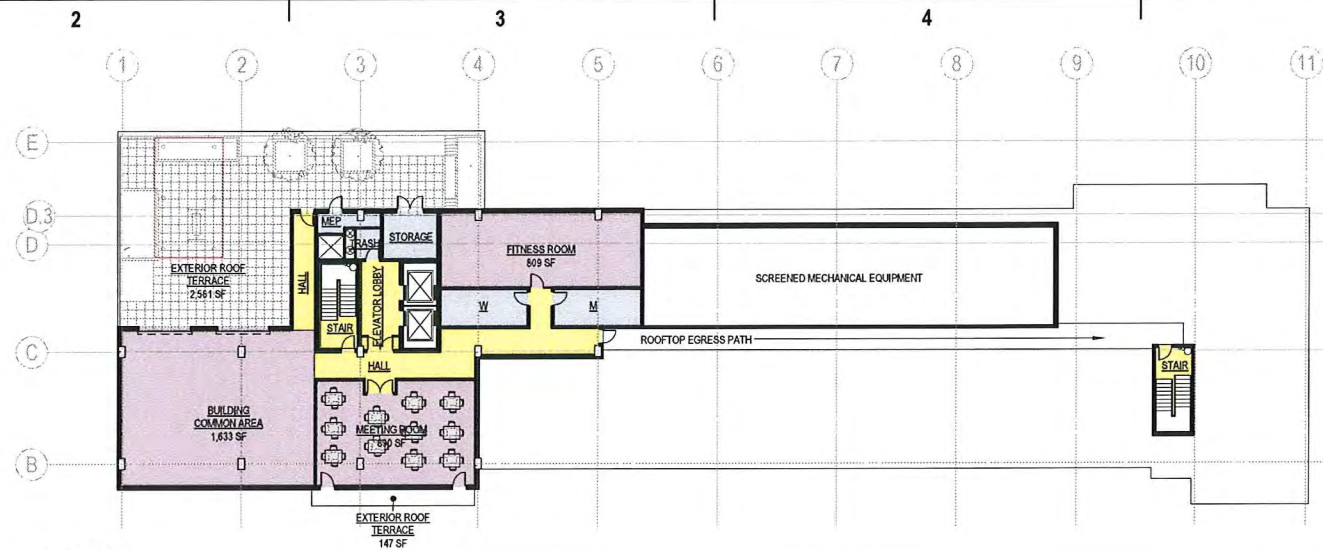
PROJECT MANAGER JP

PROJECT NUMBER 14339-01

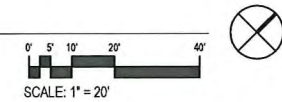
DATE 12/28/2015

LEVELS 05-11
FLOOR PLANS

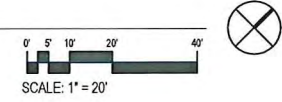
A08



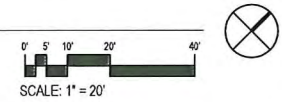
3 LEVEL 11 FLOOR PLAN
1" = 20'-0"



2 LEVELS 09-10
1" = 20'-0"



1 LEVELS 05-08
1" = 20'-0"



PROJECT INFORMATION

STONE HOUSE
MIXED USE EAST
WASHINGTON

1000 E.
WASHINGTON
MADISON, WI 53703

ISSUANCE AND REVISIONS

LAND USE APPLICATION
UDC FINAL REVIEW

#	DATE	DESCRIPTION

SHEET INFORMATION

**PROGRESS DOCUMENTS
NOT FOR CONSTRUCTION**

These documents reflect progress and intent and may be subject to change, including additional detail. These are not final construction documents and should not be used for final bidding or construction-related purposes.

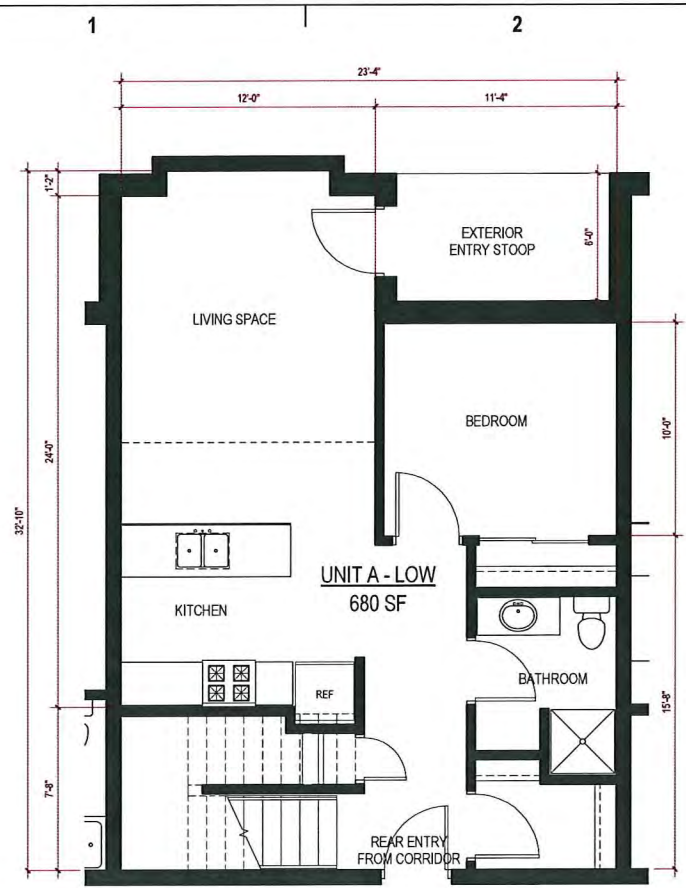
PROJECT MANAGER JP

PROJECT NUMBER 14339-01

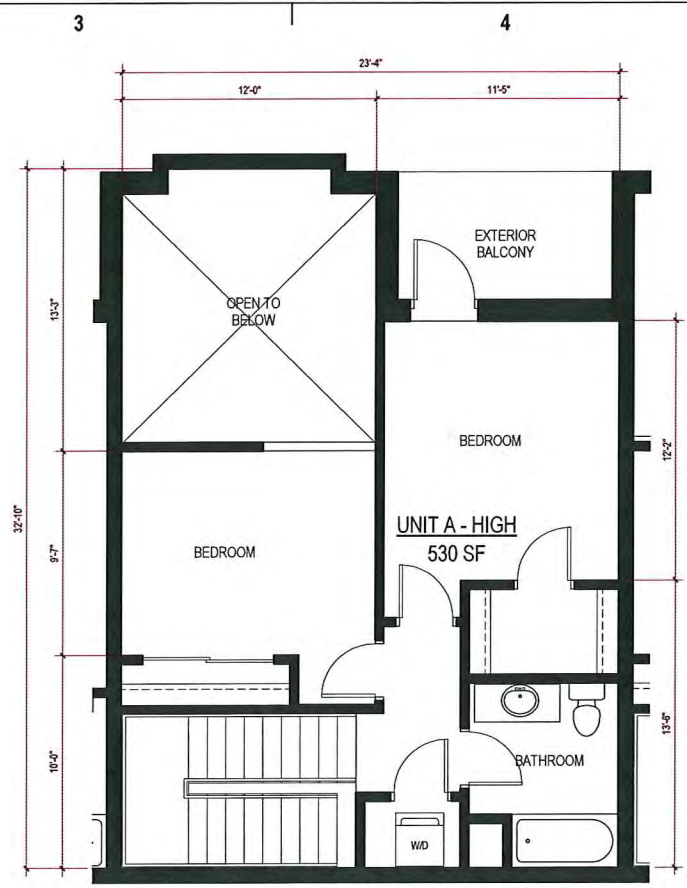
DATE 12/28/2015

UNIT FLOOR PLANS

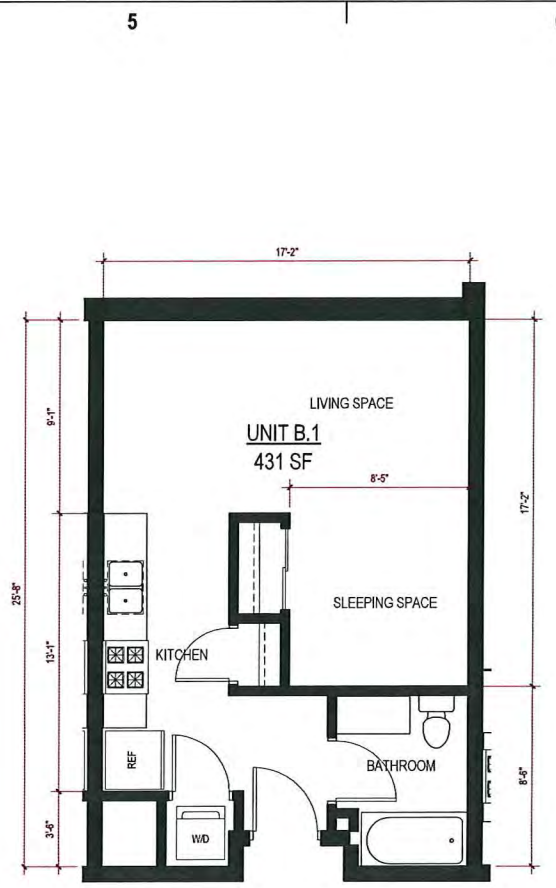
A09



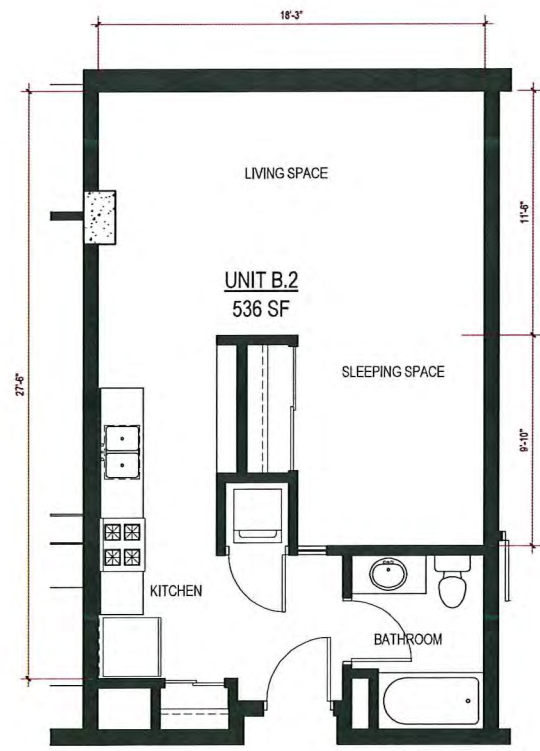
1 UNIT A - LOWER LEVEL (AFFORDABLE TOWNHOME)
1/4" = 1'-0"
SCALE: 1/4" = 1'-0"



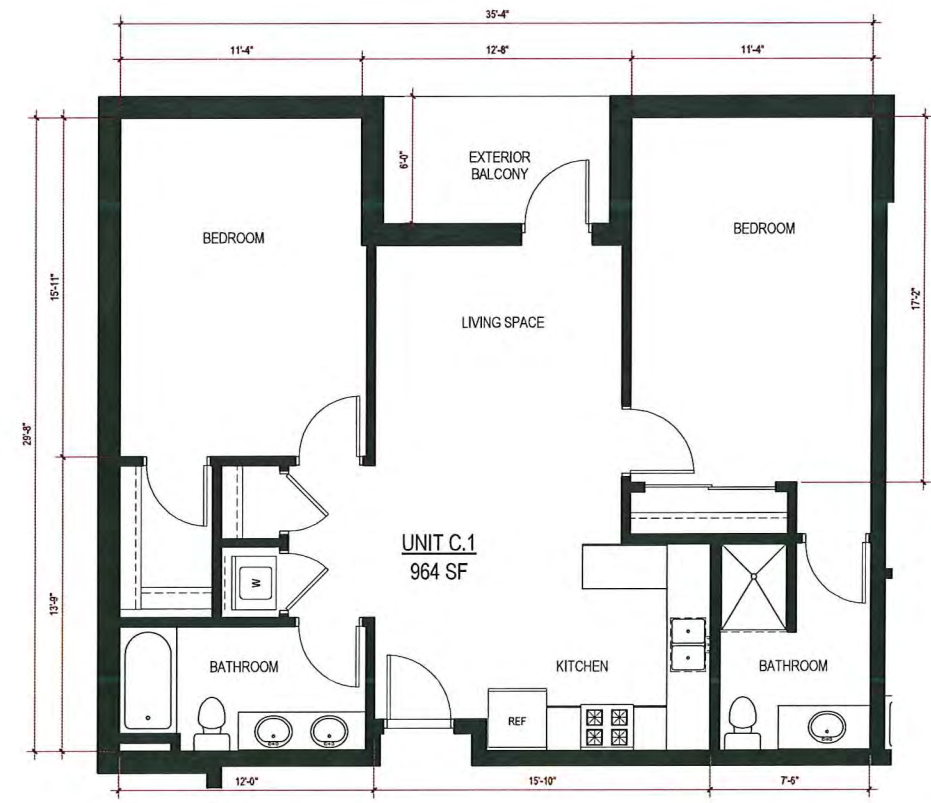
2 UNIT A - HIGHER LEVEL (AFFORDABLE TOWNHOME)
1/4" = 1'-0"
SCALE: 1/4" = 1'-0"



3 UNIT B.1 (AFFORDABLE APARTMENT)
1/4" = 1'-0"
SCALE: 1/4" = 1'-0"



4 UNIT B.2 (MARKET-RATE APARTMENT)
1/4" = 1'-0"
SCALE: 1/4" = 1'-0"



5 UNIT C.1 (AFFORDABLE APARTMENT)
1/4" = 1'-0"
SCALE: 1/4" = 1'-0"



epstein uhen : architects

milwaukee 333 East Chicago Street
Milwaukee, Wisconsin 53202
telephone 414.271.5350
madison 309 West Johnson Street, Suite 202
Madison, Wisconsin 53703
telephone 608.442.5350

PROJECT INFORMATION

STONE HOUSE
MIXED USE EAST
WASHINGTON

1000 E.
WASHINGTON
MADISON, WI 53703

ISSUANCE AND REVISIONS

LAND USE APPLICATION
UDC FINAL REVIEW

#	DATE	DESCRIPTION

SHEET INFORMATION

**PROGRESS DOCUMENTS
NOT FOR CONSTRUCTION**

These documents reflect progress and intent and may be subject to change, including additional detail. These are not final construction documents and should not be used for final bidding or construction-related purposes.

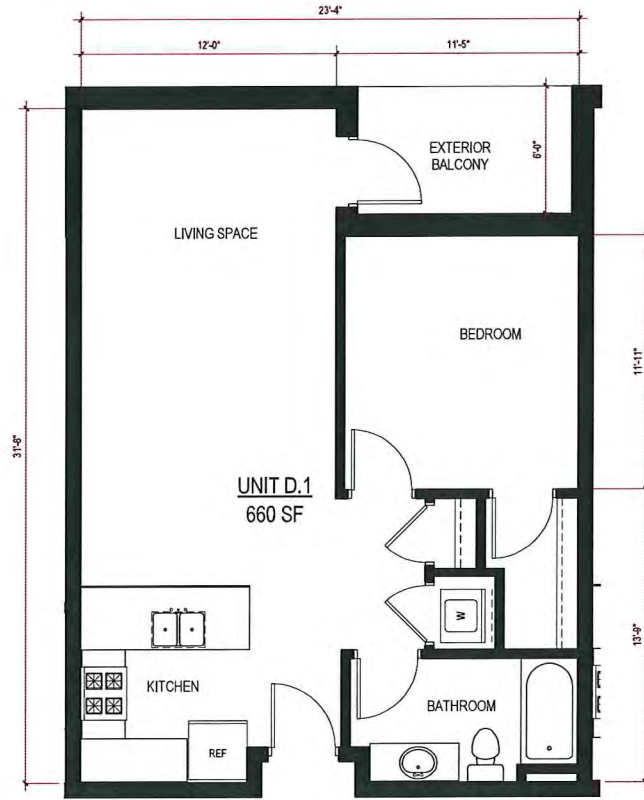
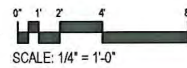
PROJECT MANAGER JP
PROJECT NUMBER 14339-01
DATE 12/28/2015

UNIT FLOOR PLANS

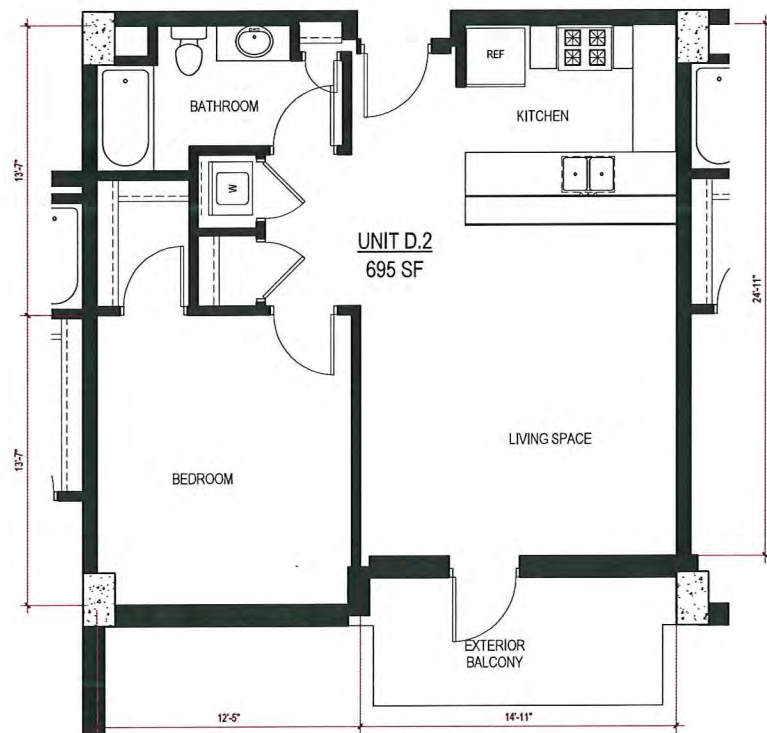
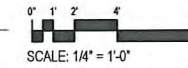
A10



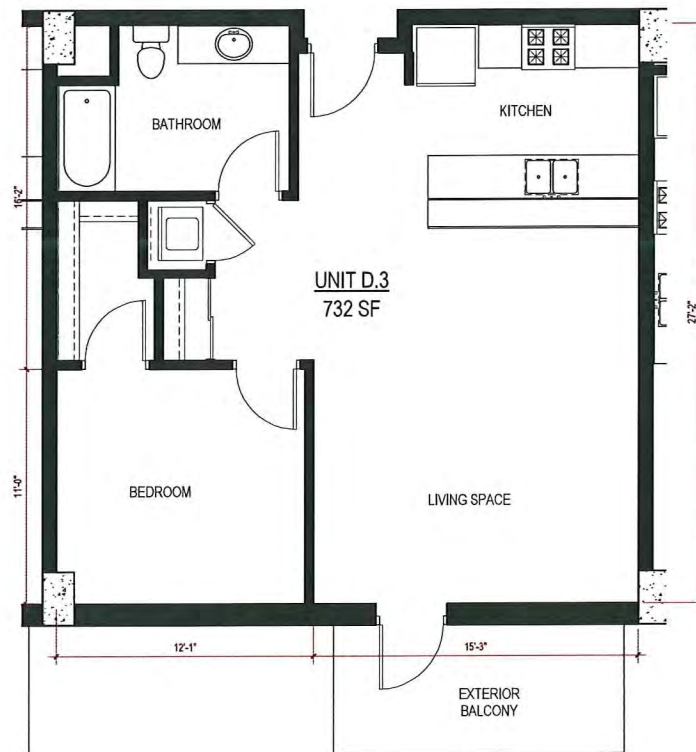
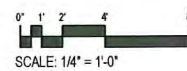
1 UNIT C.3 (MARKET-RATE APARTMENT)
1/4" = 1'-0"



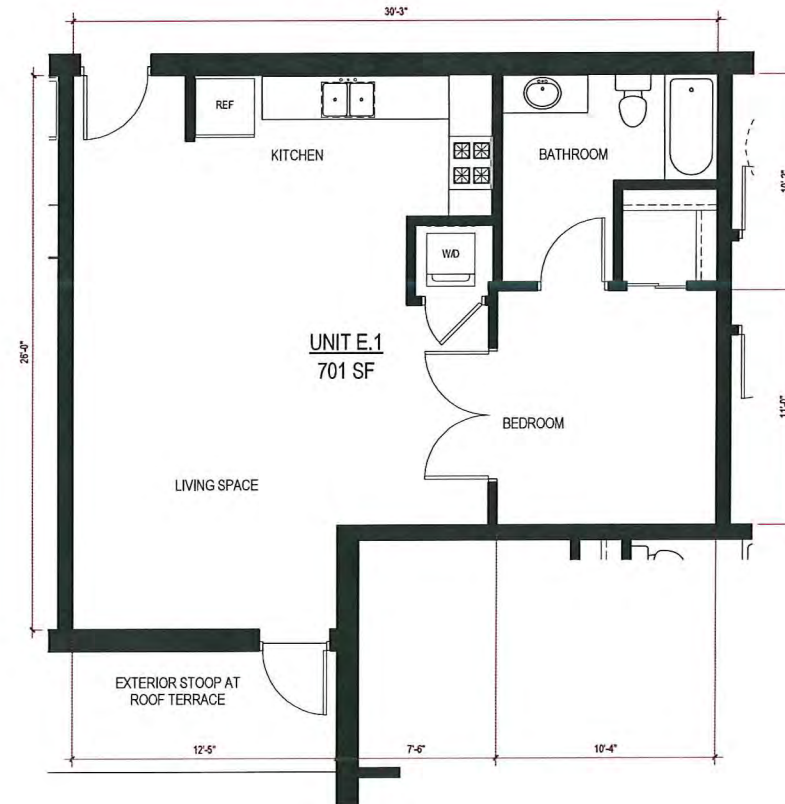
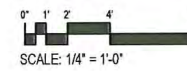
2 UNIT D.1 (AFFORDABLE APARTMENT)
1/4" = 1'-0"



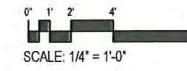
3 UNIT D.2 (MARKET-RATE APARTMENT)
1/4" = 1'-0"



4 UNIT D.3 (MARKET-RATE APARTMENT)
1/4" = 1'-0"



5 UNIT E.1 (AFFORDABLE APARTMENT)
1/4" = 1'-0"



PROJECT INFORMATION

**STONE HOUSE
MIXED USE EAST
WASHINGTON**

1000 E.
WASHINGTON
MADISON, WI 53703

ISSUANCE AND REVISIONS

LAND USE APPLICATION
UDC FINAL REVIEW

#	DATE	DESCRIPTION

SHEET INFORMATION

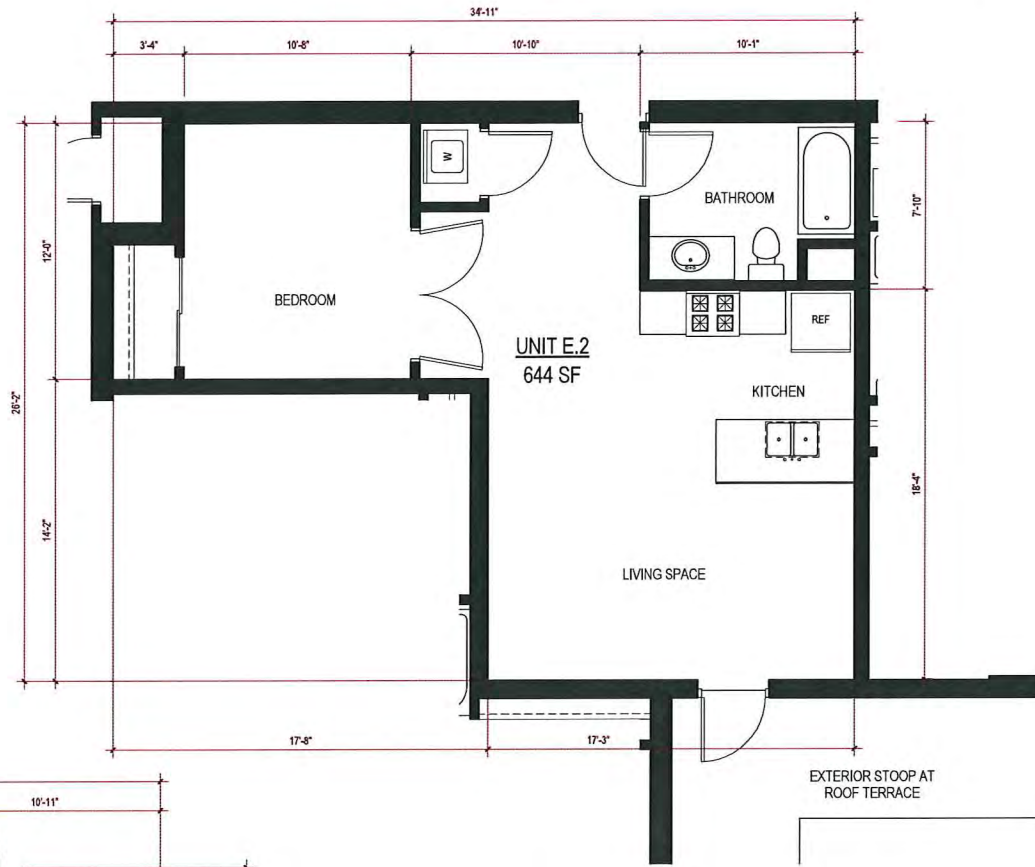
**PROGRESS DOCUMENTS
NOT FOR CONSTRUCTION**

These documents reflect progress and intent and may be subject to change, including additional detail. These are not final construction documents and should not be used for final bidding or construction-related purposes.

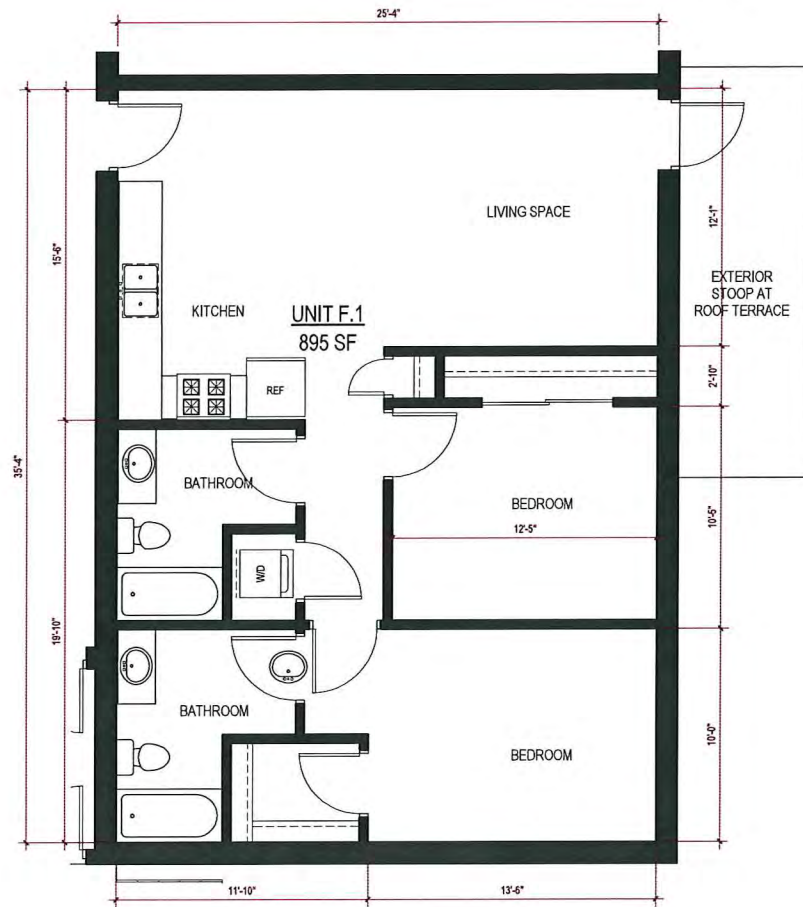
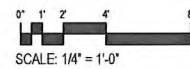
PROJECT MANAGER	JP
PROJECT NUMBER	14339-01
DATE	12/28/2015

UNIT FLOOR PLANS

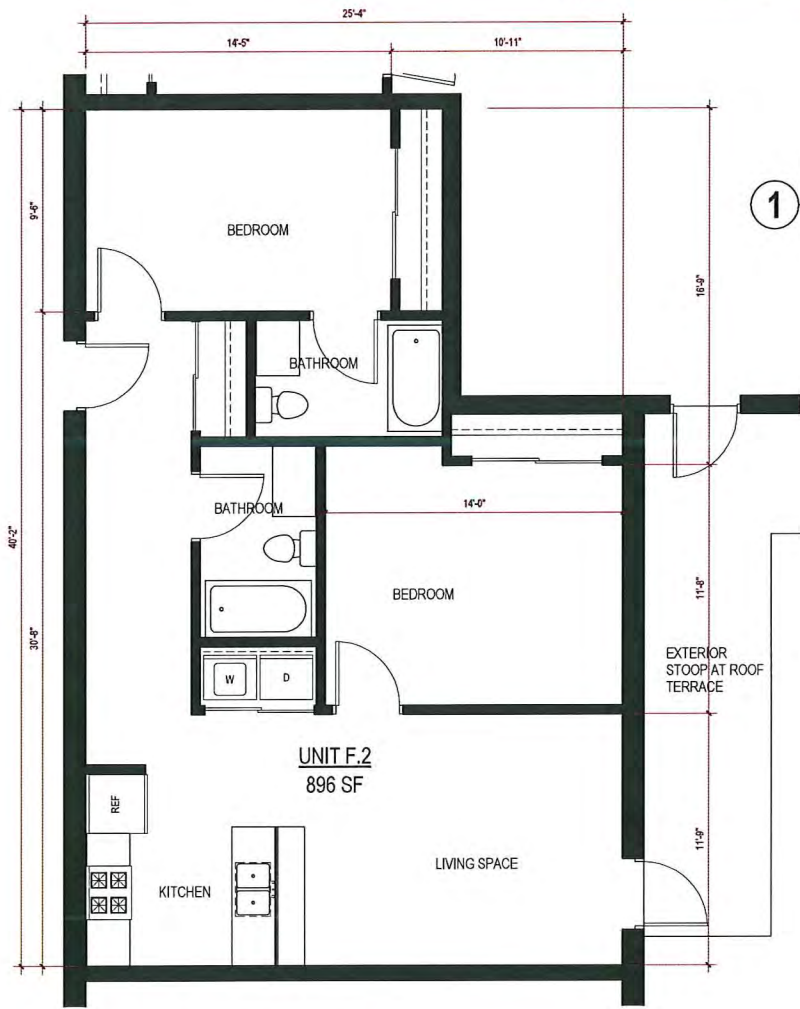
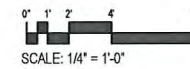
A11



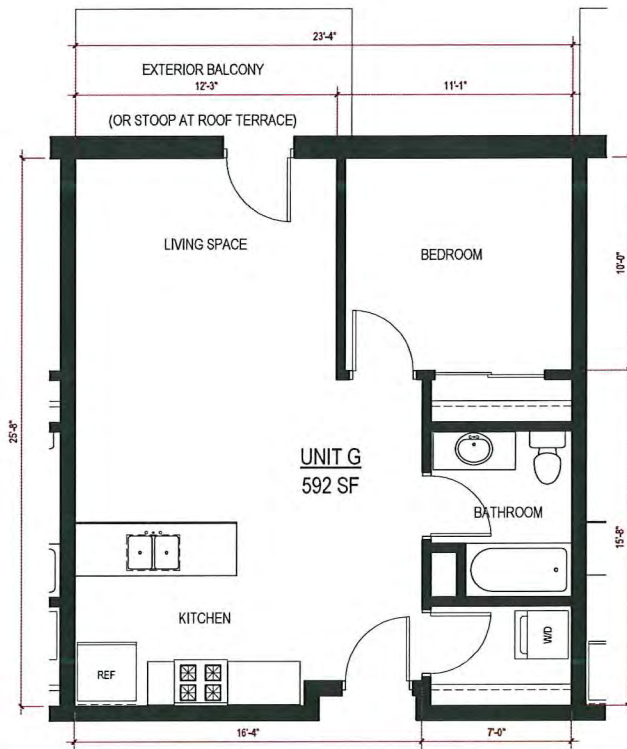
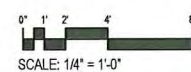
1 UNIT E.2 (AFFORDABLE APARTMENT)
1/4" = 1'-0"



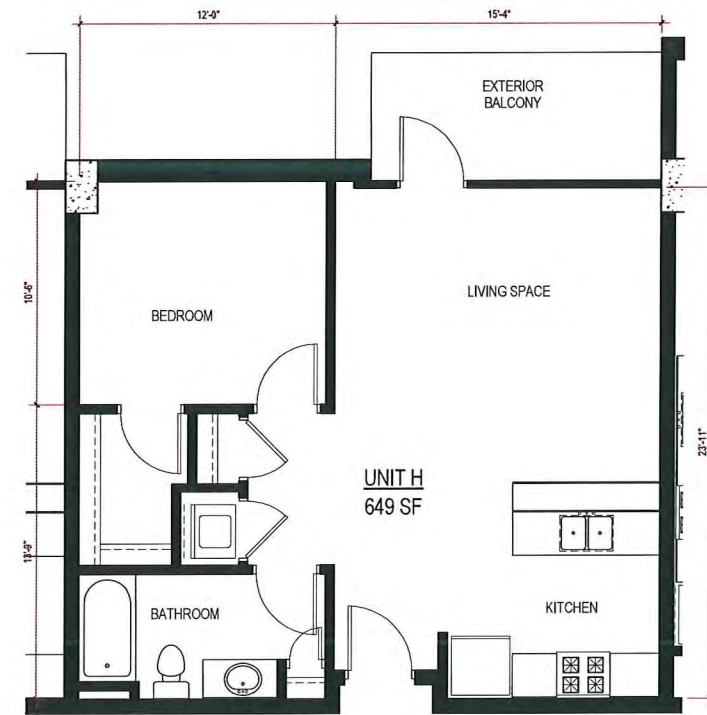
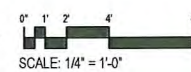
2 UNIT F.1 (AFFORDABLE APARTMENT)
1/4" = 1'-0"



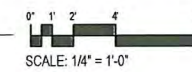
3 UNIT F.2 (AFFORDABLE APARTMENT)
1/4" = 1'-0"



4 UNIT G (AFFORDABLE APARTMENT)
1/4" = 1'-0"



5 UNIT H (MARKET-RATE APARTMENT)
1/4" = 1'-0"





epstein uhen : architects

milwaukee 333 East Chicago Street
Milwaukee, Wisconsin 53202
telephone 414.271.5350
madison 309 West Johnson Street, Suite 202
Madison, Wisconsin 53703
telephone 608.442.5350

PROJECT INFORMATION

STONE HOUSE
MIXED USE EAST
WASHINGTON

1000 E.
WASHINGTON
MADISON, WI 53703

ISSUANCE AND REVISIONS

LAND USE APPLICATION
UDC FINAL REVIEW

#	DATE	DESCRIPTION

SHEET INFORMATION

**PROGRESS DOCUMENTS
NOT FOR CONSTRUCTION**

These documents reflect progress and intent and may be subject to change including additional detail. These are not final construction documents and should not be used for final bidding or construction-related purposes.

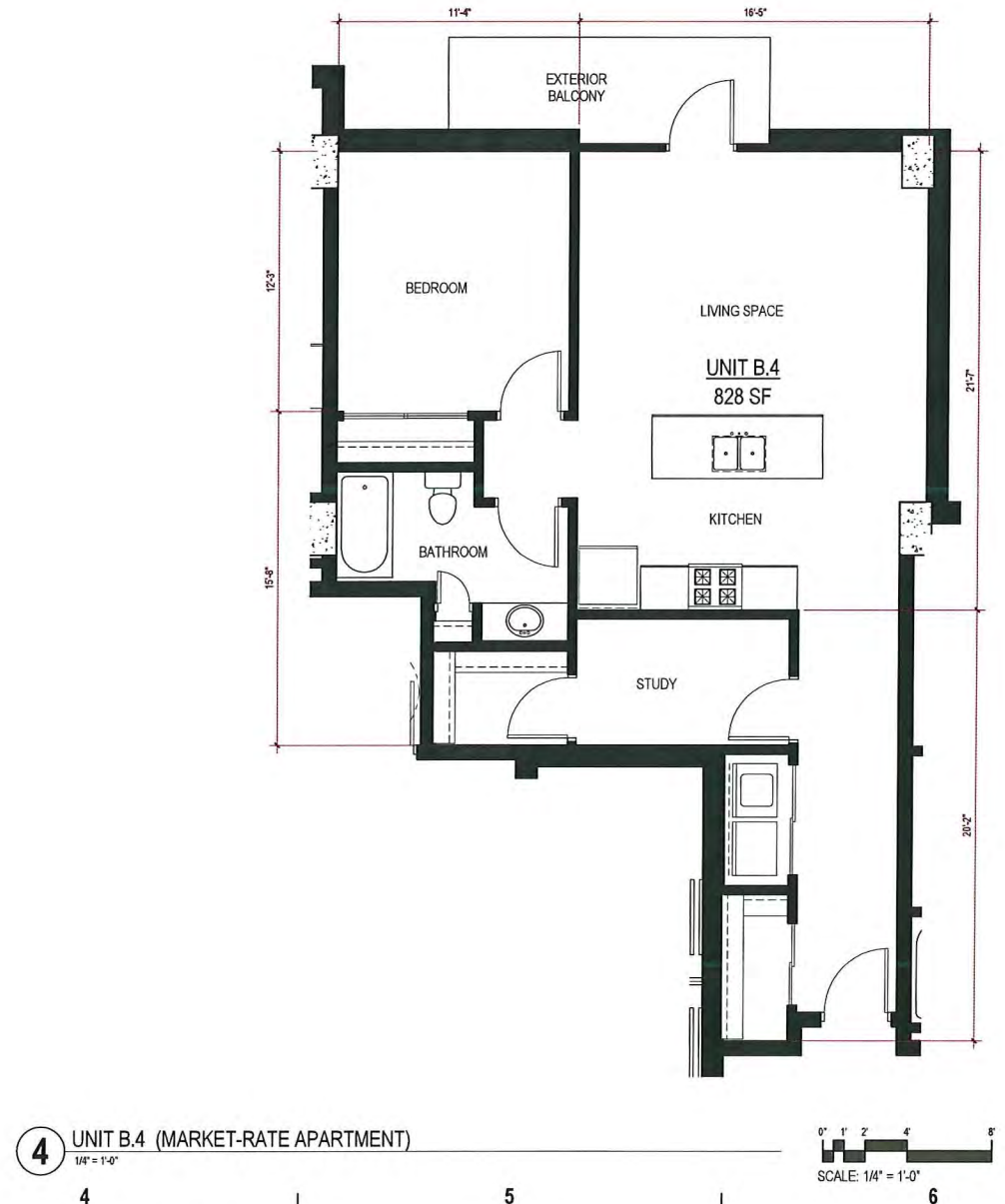
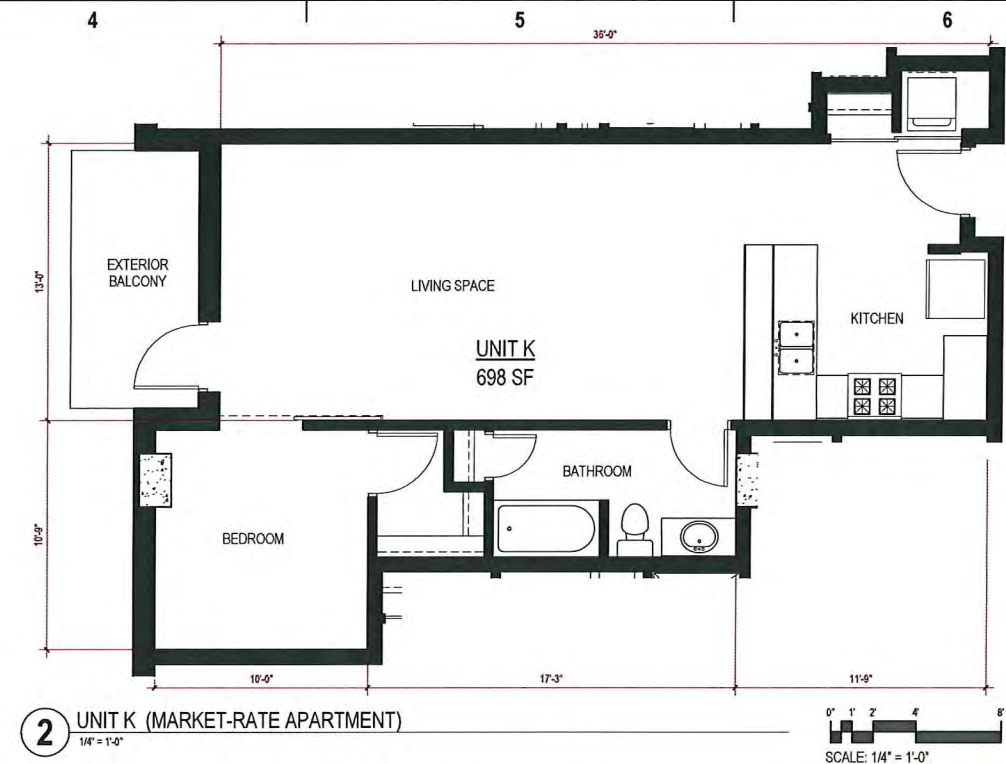
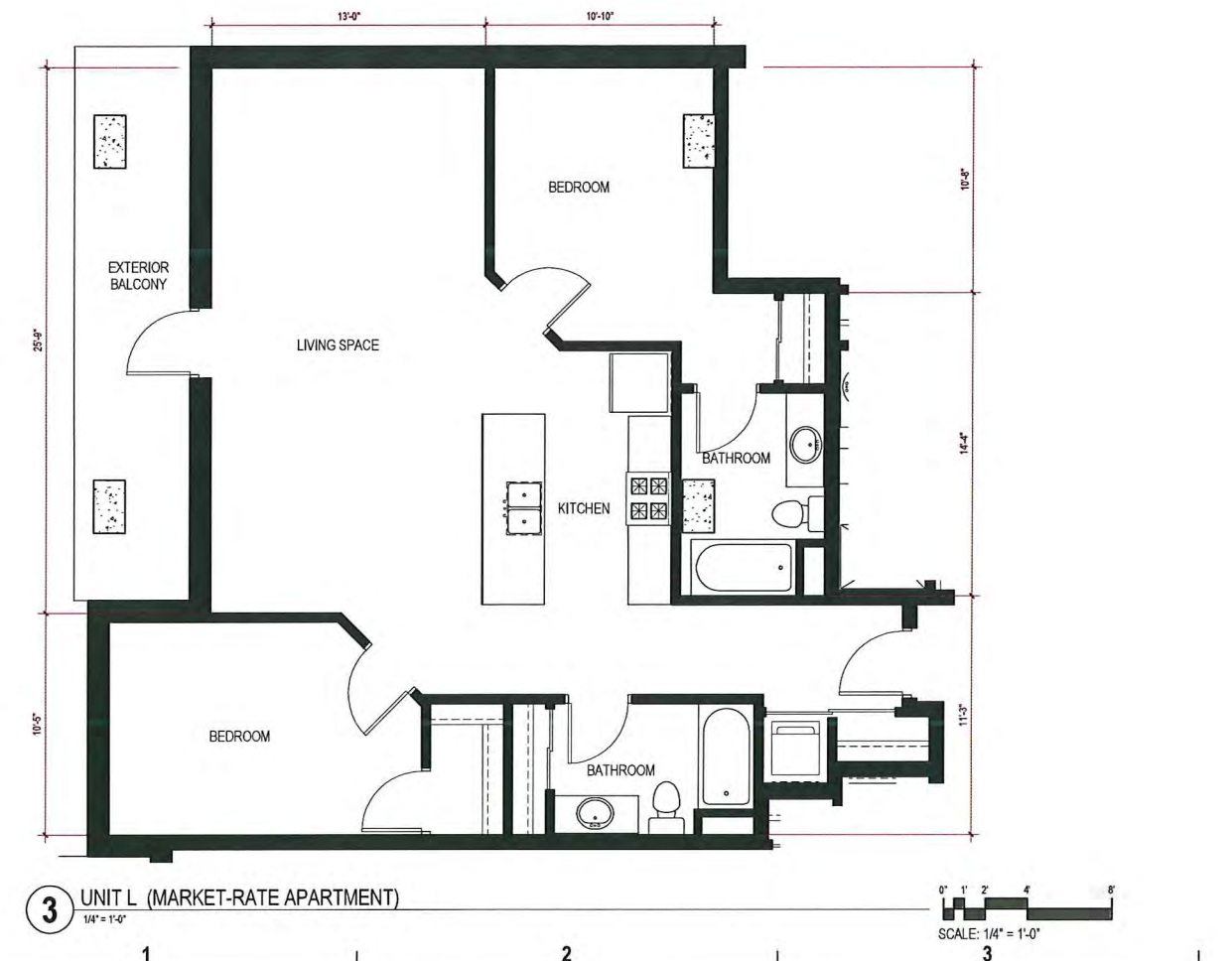
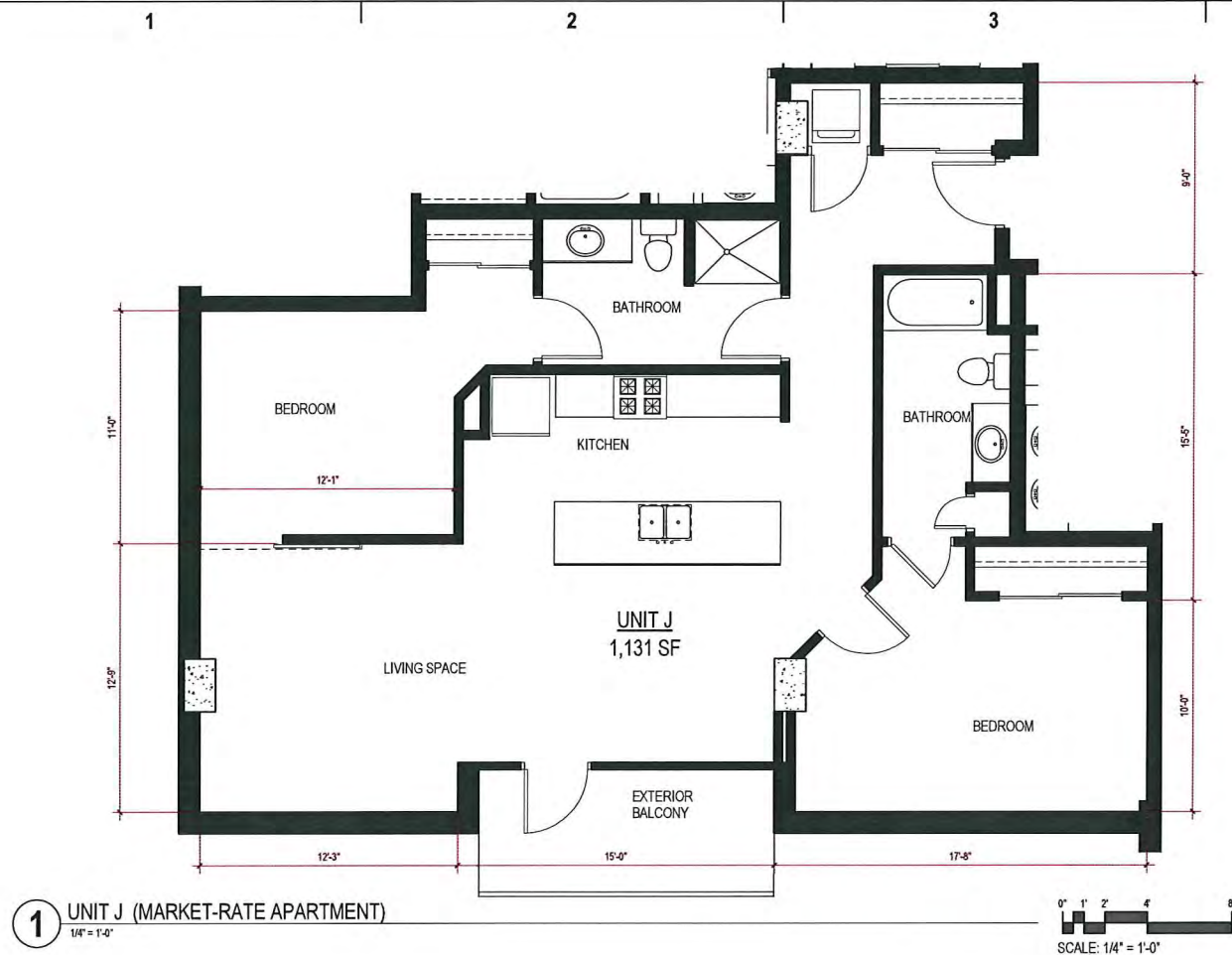
PROJECT MANAGER JP

PROJECT NUMBER 14339-01

DATE 12/28/2015

UNIT FLOOR PLANS

A12





epstein uhen : architects

milwaukee 333 East Chicago Street
Milwaukee, Wisconsin 53202
telephone 414.271.5350
madison 309 West Johnson Street, Suite 202
Madison, Wisconsin 53703
telephone 608.442.5350

PROJECT INFORMATION

STONE HOUSE
MIXED USE EAST
WASHINGTON

1000 E.
WASHINGTON
MADISON, WI 53703

ISSUANCE AND REVISIONS

LAND USE APPLICATION
UDC FINAL REVIEW

#	DATE	DESCRIPTION

SHEET INFORMATION

**PROGRESS DOCUMENTS
NOT FOR CONSTRUCTION**

These documents reflect progress and intent and may be subject to change, including additional detail. These are not final construction documents and should not be used for final bidding or construction-related purposes.

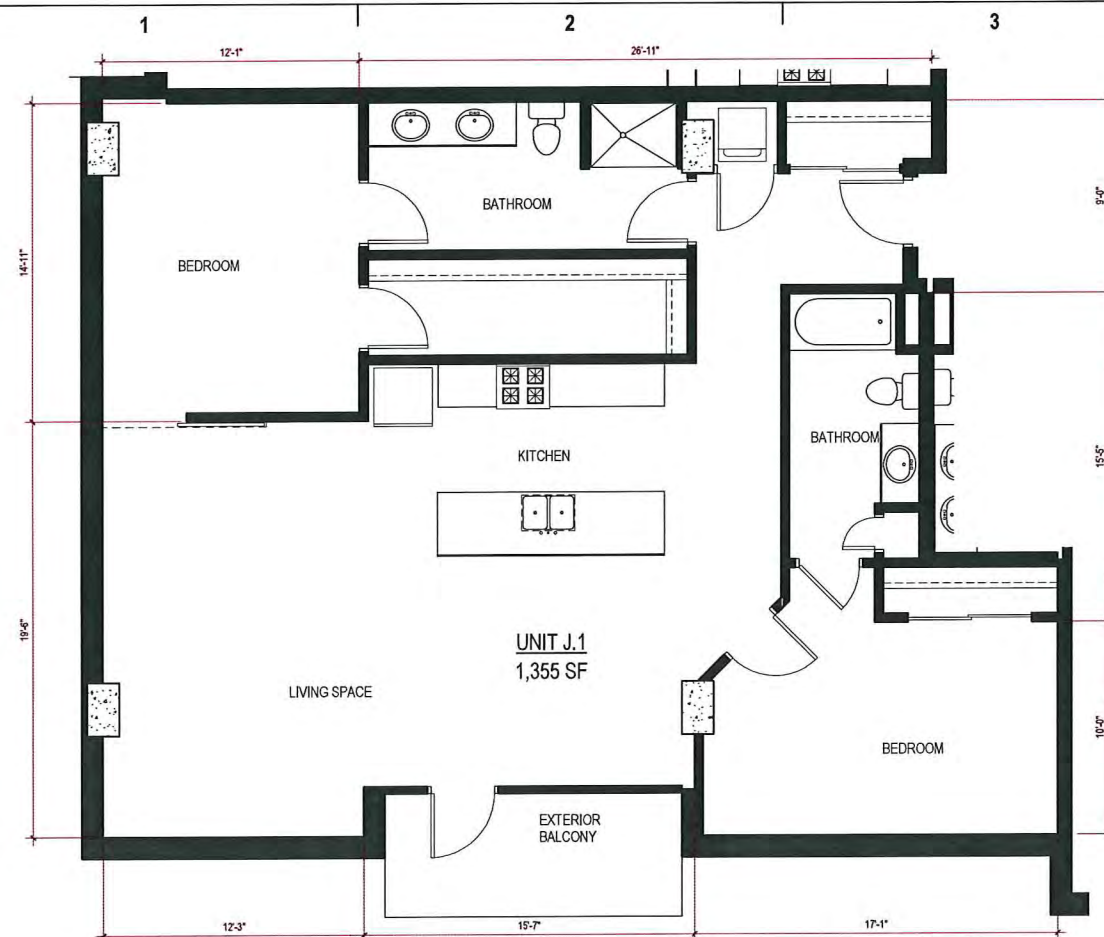
PROJECT MANAGER JP

PROJECT NUMBER 14339-01

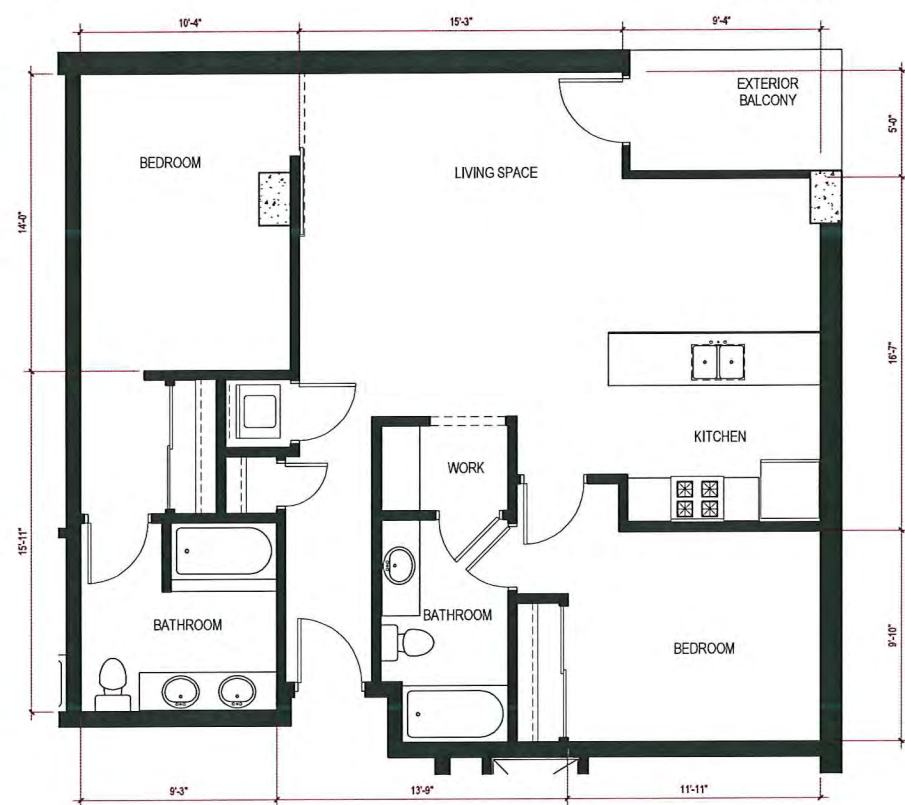
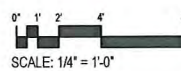
DATE 12/28/2015

UNIT FLOOR PLANS

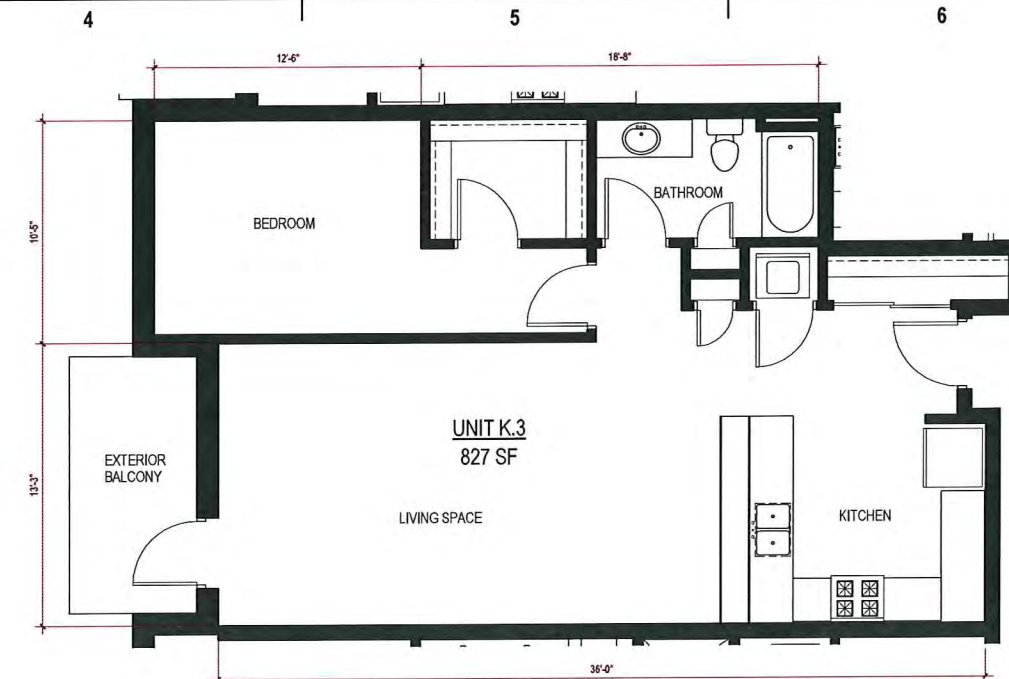
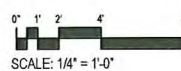
A13



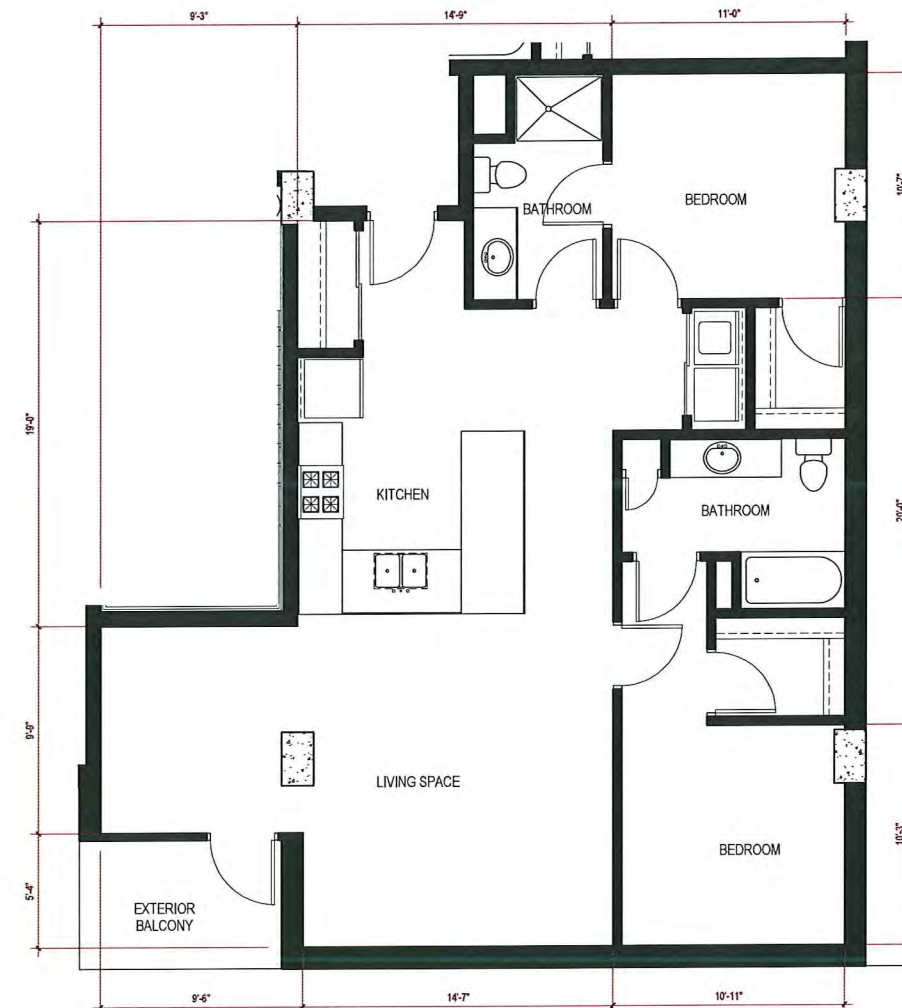
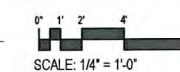
3 UNIT J.1 (MARKET-RATE APARTMENT)
1/4" = 1'-0"



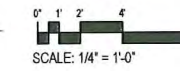
1 UNIT N (MARKET-RATE APARTMENT)
1/4" = 1'-0"



4 UNIT K.3 (MARKET-RATE APARTMENT)
1/4" = 1'-0"



2 UNIT P (MARKET-RATE APARTMENT)
1/4" = 1'-0"



1 2 3 4 5 6

KEYNOTES PER SHEET	
0341-05	EXPOSED CONCRETE
0443-02	BRICK COLOR 1 UTILITY
0443-04	MANUFACTURED STONE SMOOTH
0443-07	BRICK COLOR 1 MODULAR
0724-01	EXTERIOR INSULATION & FINISH SYSTEM - COLOR 1
0724-07	EXTERIOR INSULATION & FINISH SYSTEM - COLOR 2
0742-08	METAL PANEL - COLOR 1
0742-09	METAL PANEL - COLOR 2
0742-10	METAL PANEL - COLOR 3
0742-11	METAL PANEL - COLOR 4
0742-15	CORRUGATED METAL PANEL
0742-17	METAL PANEL - COLOR 8
0742-19	PAINTED BREAK METAL
0746-03	CEMENT BOARD SIDING
0746-04	SHINGLED CEMENT BOARD SIDING
0843-01	ALUMINUM-FRAMED STOREFRONT
0850-02	VINYL WINDOW
0850-03	GLASS RAILING



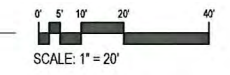
eppstein uhen : architects
 milwaukee 333 East Chicago Street
 Milwaukee, Wisconsin 53202
 telephone 414.271.5350
 madison 309 West Johnson Street, Suite 202
 Madison, Wisconsin 53703
 telephone 608.442.5350

D

C

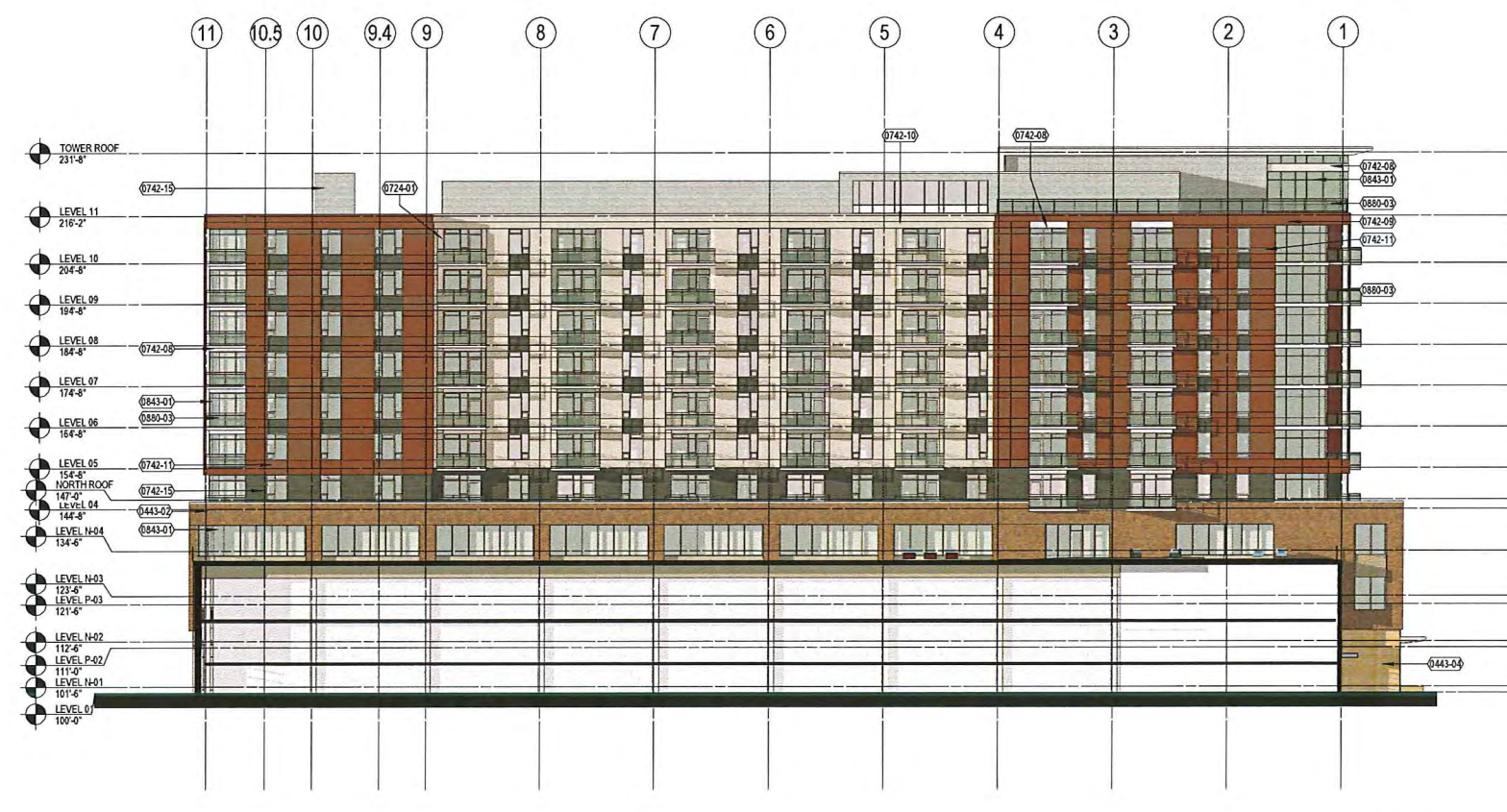


1 NORTH ELEVATION-AFFORDABLE
 1" = 20'-0"

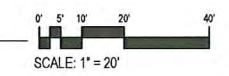


B

A



2 NORTH ELEVATION
 1" = 20'-0"



1 2 3 4 5 6

PROJECT INFORMATION

**STONE HOUSE
 MIXED USE EAST
 WASHINGTON**

 1000 E.
 WASHINGTON
 MADISON, WI 53703

ISSUANCE AND REVISIONS

LAND USE APPLICATION
 UDC FINAL REVIEW

#	DATE	DESCRIPTION

SHEET INFORMATION

**PROGRESS DOCUMENTS
 NOT FOR CONSTRUCTION**
These documents reflect progress and intent and may be subject to change, including additional detail. These are not final construction documents and should not be used for final bidding or construction-related purposes.

PROJECT MANAGER	JP
PROJECT NUMBER	14339-01
DATE	12/28/2015

**BUILDING
 ELEVATIONS**

A14



epstein uhen : architects

milwaukee 333 East Chicago Street
Milwaukee, Wisconsin 53202
telephone 414.271.5350
madison 309 West Johnson Street, Suite 202
Madison, Wisconsin 53703
telephone 608.442.5350

KEYNOTES PER SHEET	
0341-04	PRECAST CONCRETE WALL PANEL
0341-05	EXPOSED CONCRETE
0443-02	BRICK COLOR 1 UTILITY
0443-04	MANUFACTURED STONE SMOOTH
0443-05	MANUFACTURED STONE ROUGH CUT
0443-06	NATURAL STONE BASE
0443-07	BRICK COLOR 1 MODULAR
0724-01	EXTERIOR INSULATION & FINISH SYSTEM - COLOR 1
0724-07	EXTERIOR INSULATION & FINISH SYSTEM - COLOR 2
0742-08	METAL PANEL - COLOR 1
0742-09	METAL PANEL - COLOR 2
0742-10	METAL PANEL - COLOR 3
0742-11	METAL PANEL - COLOR 4
0742-14	ARCHITECTURAL LOUVER
0742-15	CORRUGATED METAL PANEL
0742-16	METAL PANEL - COLOR 5
0742-17	METAL PANEL - COLOR 6
0742-19	PAINTED BREAK METAL
0746-03	CEMENT BOARD SIDING
0746-04	SHINGLED CEMENT BOARD SIDING
0843-01	ALUMINUM-FRAMED STOREFRONT
0844-01	ALUMINUM-FRAMED CURTAIN WALL
0880-01	SPANDREL GLASS
0880-02	VINYL WINDOW
0880-03	GLASS RAILING

PROJECT INFORMATION

STONE HOUSE
MIXED USE EAST
WASHINGTON

1000 E.
WASHINGTON
MADISON, WI 53703

ISSUANCE AND REVISIONS

LAND USE APPLICATION
UDC FINAL REVIEW

#	DATE	DESCRIPTION

SHEET INFORMATION

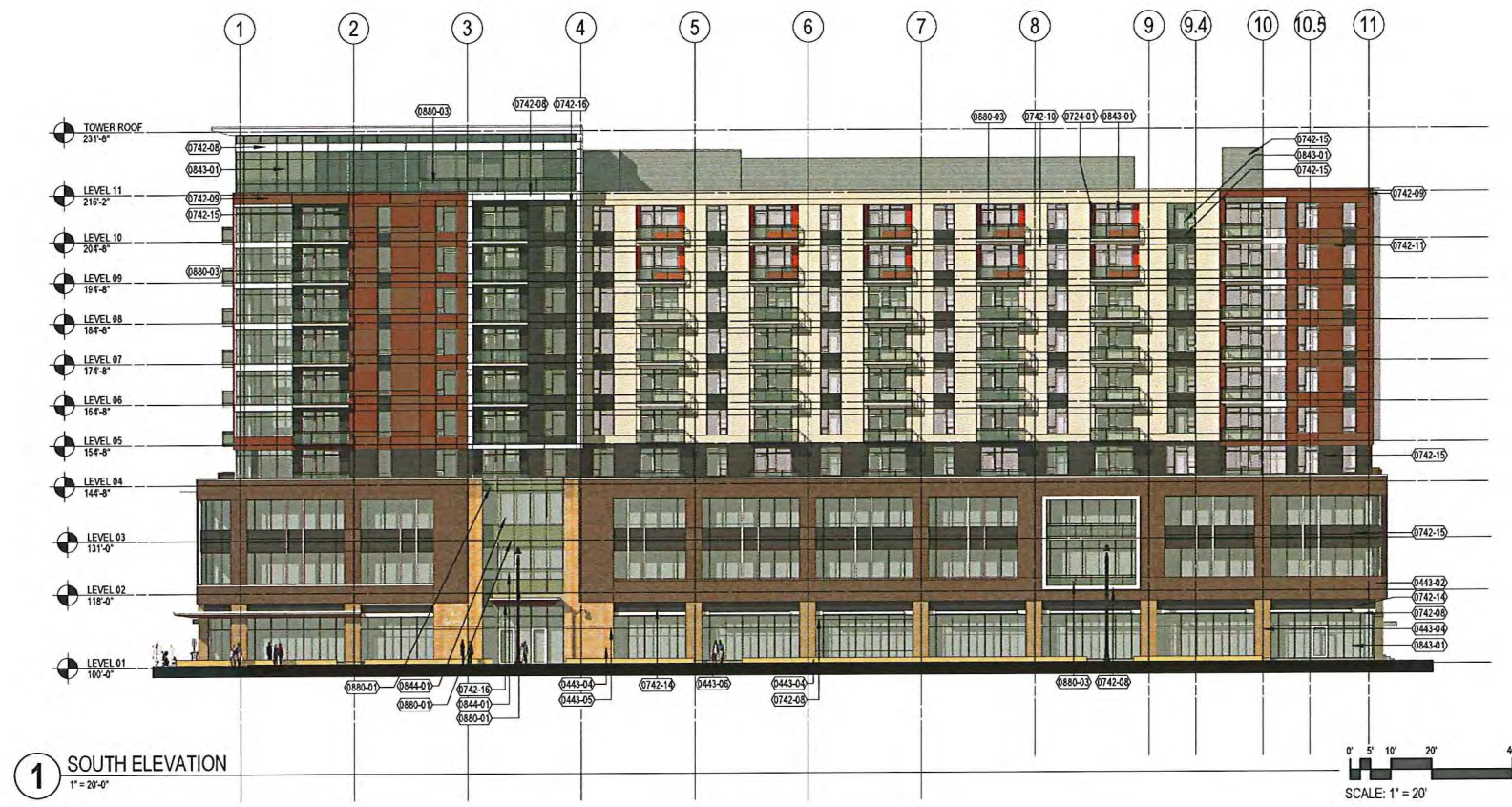
**PROGRESS DOCUMENTS
NOT FOR CONSTRUCTION**

These documents reflect progress and intent and may be subject to change, including additional detail. These are not final construction documents and should not be used for final bidding or construction-related purposes.

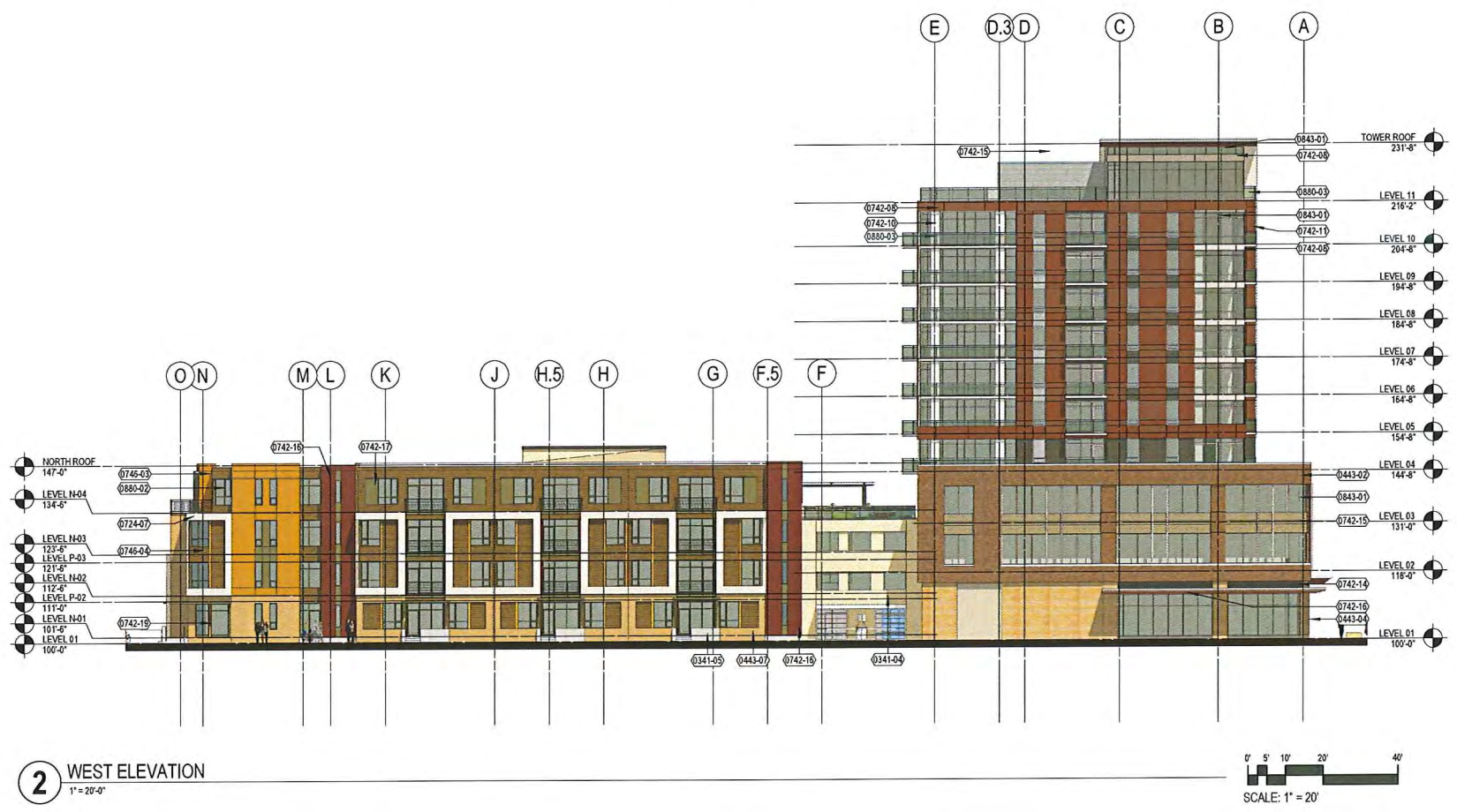
PROJECT MANAGER	JP
PROJECT NUMBER	14339-01
DATE	12/28/2015

BUILDING
ELEVATIONS

A15



1 SOUTH ELEVATION
1" = 20'-0"



2 WEST ELEVATION
1" = 20'-0"



epstein uhen : architects

milwaukee 333 East Chicago Street
Milwaukee, Wisconsin 53202
telephone 414.271.5350
madison 309 West Johnson Street, Suite 202
Madison, Wisconsin 53703
telephone 608.442.5350

KEYNOTES PER SHEET	
0341-04	PRECAST CONCRETE WALL PANEL
0341-05	EXPOSED CONCRETE
0443-02	BRICK COLOR 1 UTILITY
0443-04	MANUFACTURED STONE SMOOTH
0443-07	BRICK COLOR 1 MODULAR
0742-08	METAL PANEL - COLOR 1
0742-09	METAL PANEL - COLOR 2
0742-11	METAL PANEL - COLOR 4
0742-15	CORRUGATED METAL PANEL
0742-16	METAL PANEL - COLOR 5
0742-17	METAL PANEL - COLOR 6
0742-19	PAINTED BREAK METAL
0746-03	CEMENT BOARD SIDING
0746-04	SHINGLED CEMENT BOARD SIDING
0843-01	ALUMINUM-FRAMED STOREFRONT
0880-02	VINYL WINDOW
0880-03	GLASS RAILING

PROJECT INFORMATION

STONE HOUSE
MIXED USE EAST
WASHINGTON

1000 E.
WASHINGTON
MADISON, WI 53703

ISSUANCE AND REVISIONS

LAND USE APPLICATION
UDC FINAL REVIEW

#	DATE	DESCRIPTION

SHEET INFORMATION

**PROGRESS DOCUMENTS
NOT FOR CONSTRUCTION**

These documents reflect progress and intent and may be subject to change, including additional detail. These are not final construction documents and should not be used for final bidding or construction-related purposes.

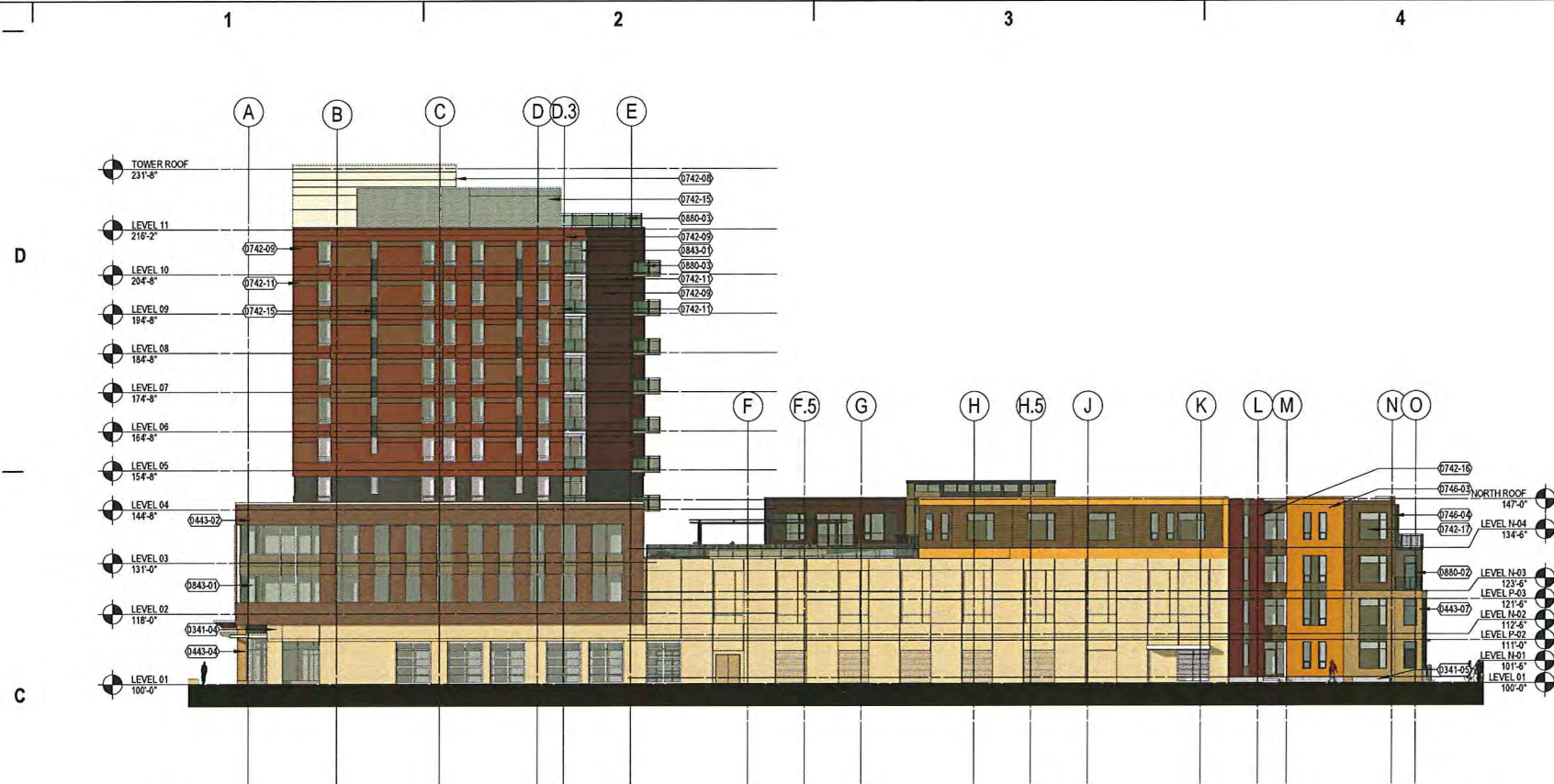
PROJECT MANAGER JP

PROJECT NUMBER 14339-01

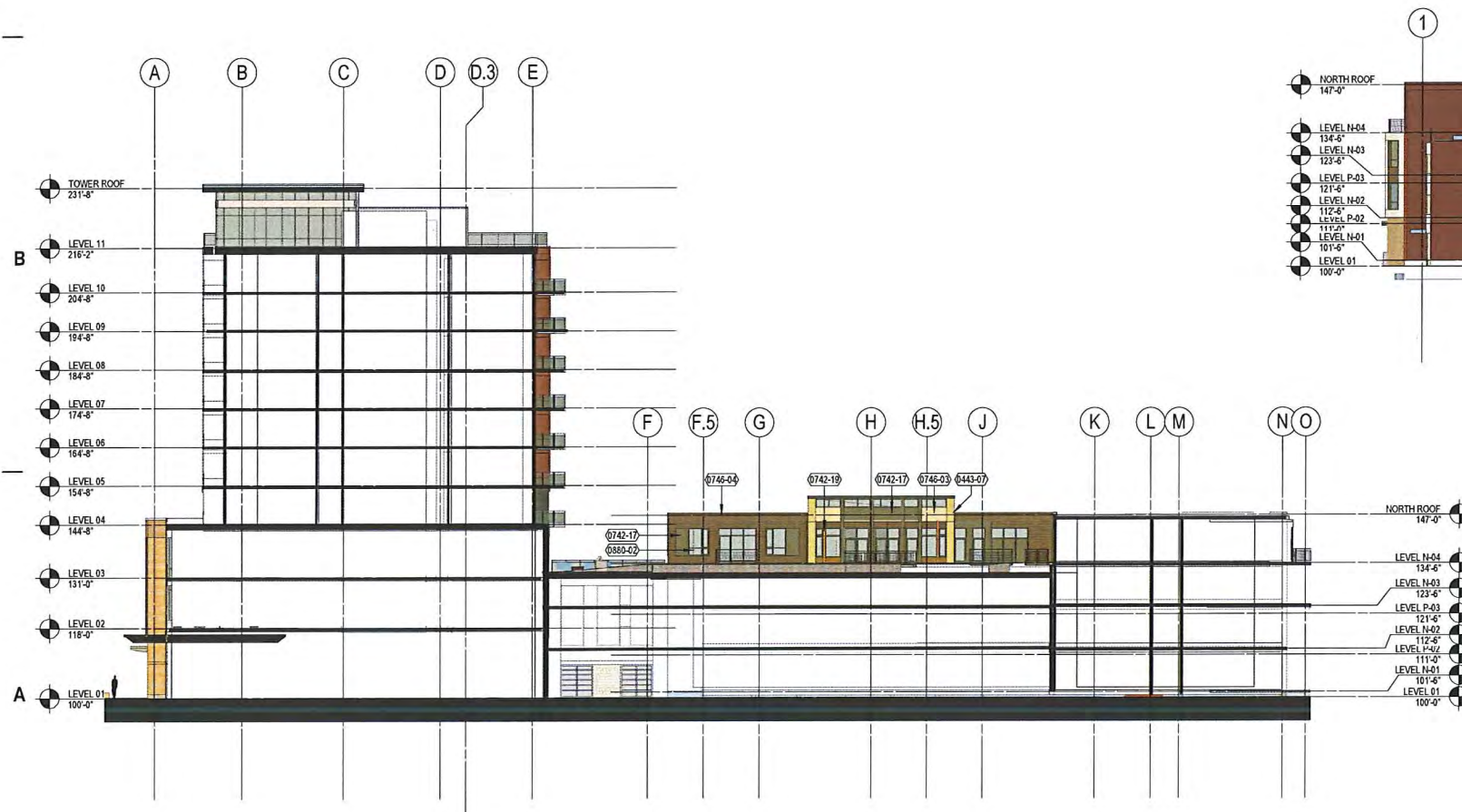
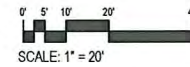
DATE 12/28/2015

BUILDING
ELEVATIONS

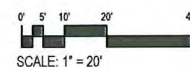
A16



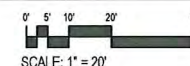
1 EAST ELEVATION
1" = 20'-0"



2 EAST ELEVATION - AFFORDABLE
1" = 20'-0"



3 SOUTH ELEVATION - AFFORDABLE APARTMENTS
1" = 20'-0"



1 2 3 4 5 6



eppstein uhen : architects

milwaukee 333 East Chicago Street
Milwaukee, Wisconsin 53202
telephone 414.271.5350
madison 309 West Johnson Street, Suite 202
Madison, Wisconsin 53703
telephone 608.442.5350

D

C



VIEW FROM THE CORNER OF EAST WASHINGTON AND BREARLY

PROJECT INFORMATION

**STONE HOUSE
MIXED USE EAST
WASHINGTON**

1000 E.
WASHINGTON
MADISON, WI 53703

ISSUANCE AND REVISIONS

LAND USE APPLICATION
UDC FINAL REVIEW

#	DATE	DESCRIPTION

B

A



STREET VIEW FROM THE CORNER OF EAST WASHINGTON AND BREARLY

SHEET INFORMATION

**PROGRESS DOCUMENTS
NOT FOR CONSTRUCTION**
These documents reflect progress and intent and may be subject to change, including additional detail. These are not final construction documents and should not be used for final bidding or construction-related purposes.

PROJECT MANAGER JP
PROJECT NUMBER 14339-01
DATE 12/28/2015

PERSPECTIVES

A17

1 2 3 4 5 6

1 2 3 4 5 6



eppstein uhen : architects

milwaukee 333 East Chicago Street
Milwaukee, Wisconsin 53202
telephone 414.271.5350
D
madison 309 West Johnson Street, Suite 202
Madison, Wisconsin 53703
telephone 608.442.5350

PROJECT INFORMATION

**STONE HOUSE
MIXED USE EAST
WASHINGTON**

1000 E.
WASHINGTON
MADISON, WI 53703
C

ISSUANCE AND REVISIONS

LAND USE APPLICATION
UDC FINAL REVIEW

#	DATE	DESCRIPTION
---	------	-------------

B

SHEET INFORMATION

**PROGRESS DOCUMENTS
NOT FOR CONSTRUCTION**
These documents reflect progress and intent and may be subject to change, including additional detail. These are not final construction documents and should not be used for final bidding or construction-related purposes.

PROJECT MANAGER JP

PROJECT NUMBER 14339-01

DATE 12/28/2015
A

PERSPECTIVES

A18



**VIEW FROM THE CORNER OF EAST
WASHINGTON AND BREARLY**



**STREET VIEW FROM THE CORNER OF
EAST WASHINGTON AND BREARLY**

1 2 3 4 5 6

D

C

B

A

1 2 3 4 5 6

D

C



ROOFTOP VIEW OF THE ELEVENTH FLOOR TERRACE

B

A



VIEW OF THE AFFORDABLE HOUSING FROM THE CORNER OF MIFFLIN AND BREARLY

1 2 3 4 5 6



eppstein uhen : architects

milwaukee 333 East Chicago Street
Milwaukee, Wisconsin 53202
telephone 414.271.5350
madison 309 West Johnson Street, Suite 202
Madison, Wisconsin 53703
telephone 608.442.5350

D

C

PROJECT INFORMATION

STONE HOUSE
MIXED USE EAST
WASHINGTON

1000 E.
WASHINGTON
MADISON, WI 53703

ISSUANCE AND REVISIONS

LAND USE APPLICATION
UDC FINAL REVIEW

#	DATE	DESCRIPTION

B

SHEET INFORMATION

**PROGRESS DOCUMENTS
NOT FOR CONSTRUCTION**
These documents reflect progress and intent and may be subject to change, including additional detail. These are not final construction documents and should not be used for final bidding or construction-related purposes.

PROJECT MANAGER JP

PROJECT NUMBER 14339-01

DATE 12/28/2015

A

PERSPECTIVES

A19

1 2 3 4 5 6



eppstein uhen : architects

milwaukee 333 East Chicago Street
Milwaukee, Wisconsin 53202
telephone 414.271.5350
D
madison 309 West Johnson Street, Suite 202
Madison, Wisconsin 53703
telephone 608.442.5350

PROJECT INFORMATION

STONE HOUSE
MIXED USE EAST
WASHINGTON

1000 E.
WASHINGTON
MADISON, WI 53703
C

ISSUANCE AND REVISIONS

LAND USE APPLICATION
UDC FINAL REVIEW

#	DATE	DESCRIPTION
---	------	-------------

B

SHEET INFORMATION

**PROGRESS DOCUMENTS
NOT FOR CONSTRUCTION**
These documents reflect progress and intent and may be subject to change, including additional detail. These are not final construction documents and should not be used for final bidding or construction-related purposes.

PROJECT MANAGER JP

PROJECT NUMBER 14339-01

DATE 12/28/2015
A

PERSPECTIVES

A20



STREET VIEW FROM THE CORNER
OF MIFFLIN AND BREARLY



STREET VIEW OF THE AFFORDABLE
HOUSING FROM MIFFLIN

1 2 3 4 5 6

D

C

B

A



epstein uhen : architects

milwaukee 333 East Chicago Street
Milwaukee, Wisconsin 53202
telephone 414.271.5350
madison 309 West Johnson Street, Suite 202
Madison, Wisconsin 53703
telephone 608.442.5350

MARCH 20

JUNE 21

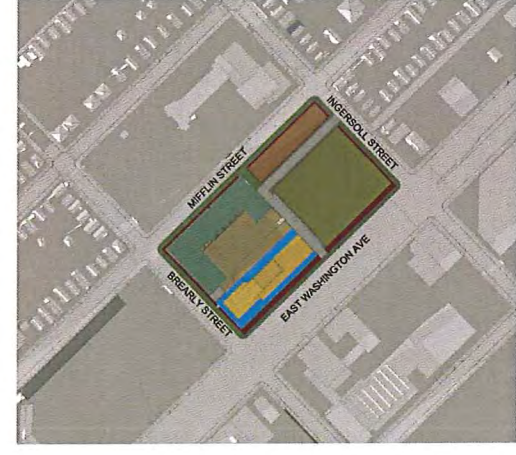
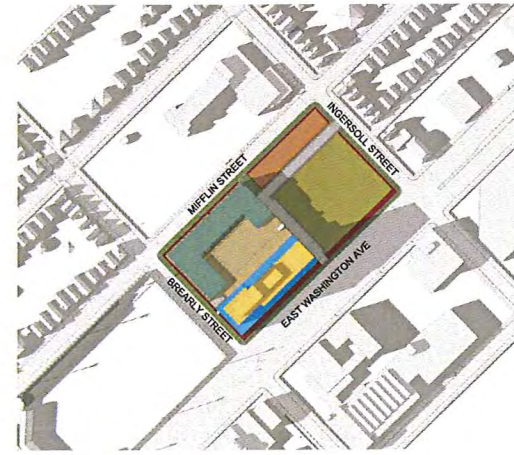
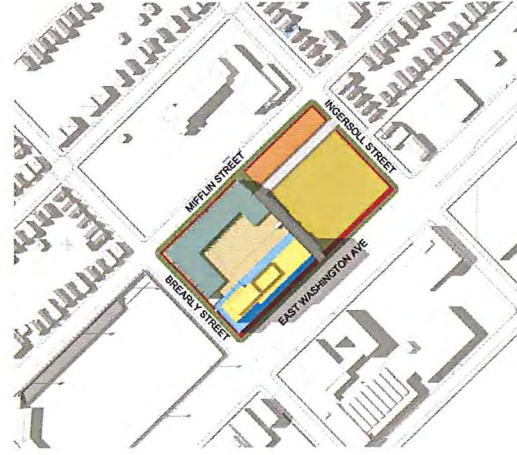
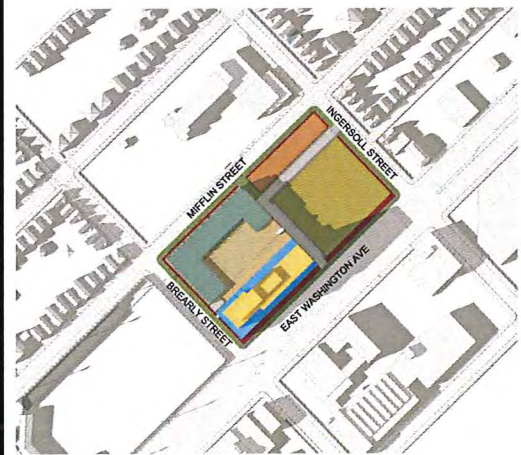
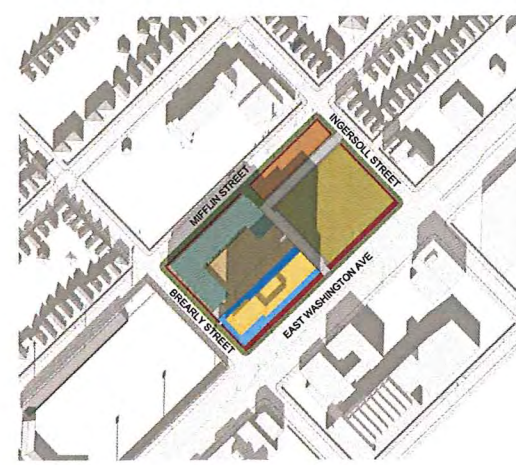
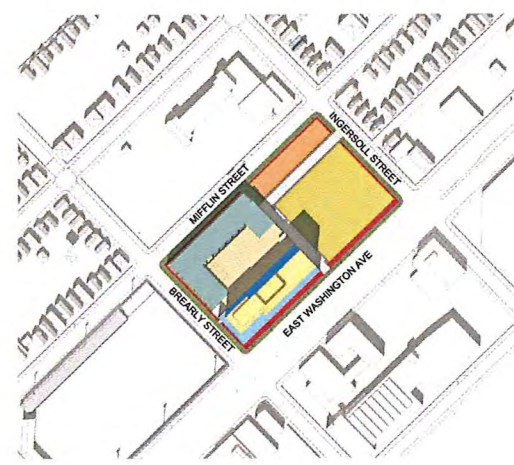
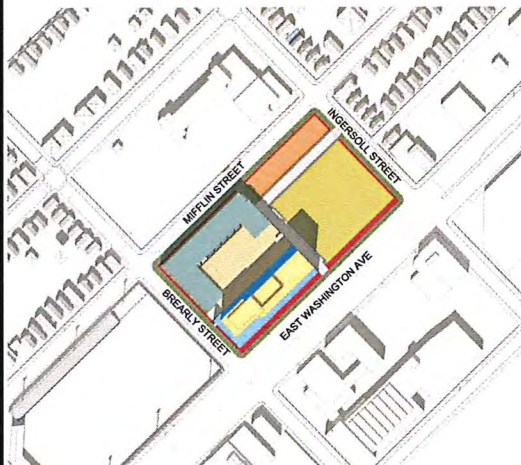
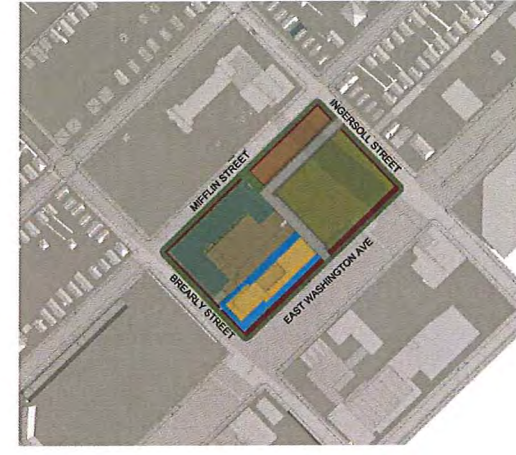
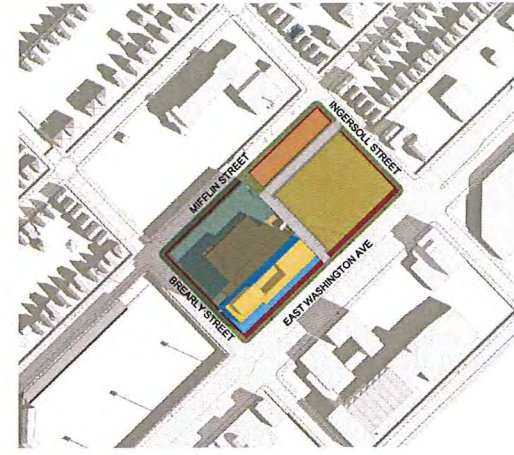
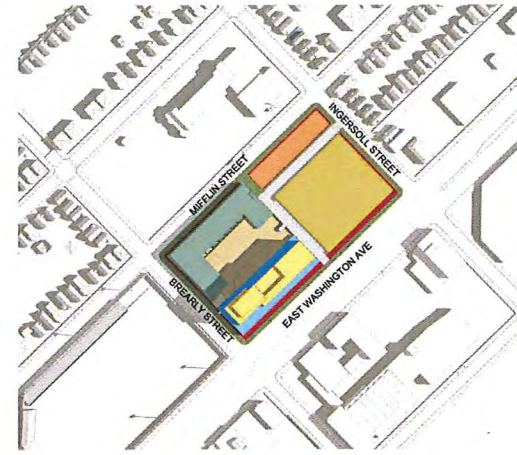
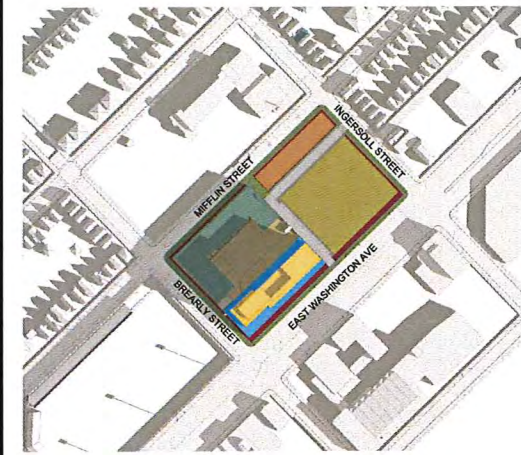
SEPTEMBER 22

DECEMBER 22

8AM

NOON

4PM



PROJECT INFORMATION

STONE HOUSE
MIXED USE EAST
WASHINGTON

1000 E.
WASHINGTON
MADISON, WI 53703

ISSUANCE AND REVISIONS

LAND USE APPLICATION
UDC FINAL REVIEW

#	DATE	DESCRIPTION

SHEET INFORMATION

**PROGRESS DOCUMENTS
NOT FOR CONSTRUCTION**

These documents reflect progress and intent and may be subject to change, including additional detail. These are not final construction documents and should not be used for final bidding or construction-related purposes.

PROJECT MANAGER	JP
PROJECT NUMBER	14339-01
DATE	12/28/2015

SUN STUDY

A21



eppstein uhen : architects

milwaukee 333 East Chicago Street
Milwaukee, Wisconsin 53202
telephone 414.271.5350
madison 309 West Johnson Street, Suite 202
Madison, Wisconsin 53703
telephone 608.442.5350

CALCULATION SUMMARY					
LABELS	AVERAGE	MAXIMUM	MINIMUM	MAX/MIN	AVG/MIN
LEVEL 01	1.3fc	15.0fc	0.0fc	N/A	N/A
LEVEL 03	1.2fc	67.0fc	0.0fc	N/A	N/A
LEVEL 11	4.3fc	102.6fc	0.0fc	N/A	N/A

LUMINAIRE SCHEDULE			
TYPE	MANUFACTURER	CATALOG NUMBER	LUMENS
A/B	LITHONIA	CSXWLED-30C-700-40K-T2M	6,695
C	GOTHAM	EVO 40-10-6AR-MD-LD	1,059
D	LUMIERE	303-B1-LEDB2-4000-TSX-42	1,159 (2@579)
E	LUMIERE	303-P1-LED-B1-4000-TSX-18	723

LEVEL 01
PHOTOMETRIC PLAN - AREA A
SCALE: 1/4"=1'-0"

PROJECT INFORMATION

STONE HOUSE
MIXED USE EAST
WASHINGTON

1000 E.
WASHINGTON
MADISON, WI 53703

ISSUANCE AND REVISIONS

LAND USE APPLICATION
UDC FINAL REVIEW

#	DATE	DESCRIPTION
---	------	-------------

SHEET INFORMATION

**PROGRESS DOCUMENTS
NOT FOR CONSTRUCTION**

These documents reflect progress and intent and may be subject to change, including additional detail. These are not final construction documents and should not be used for final bidding or construction-related purposes.

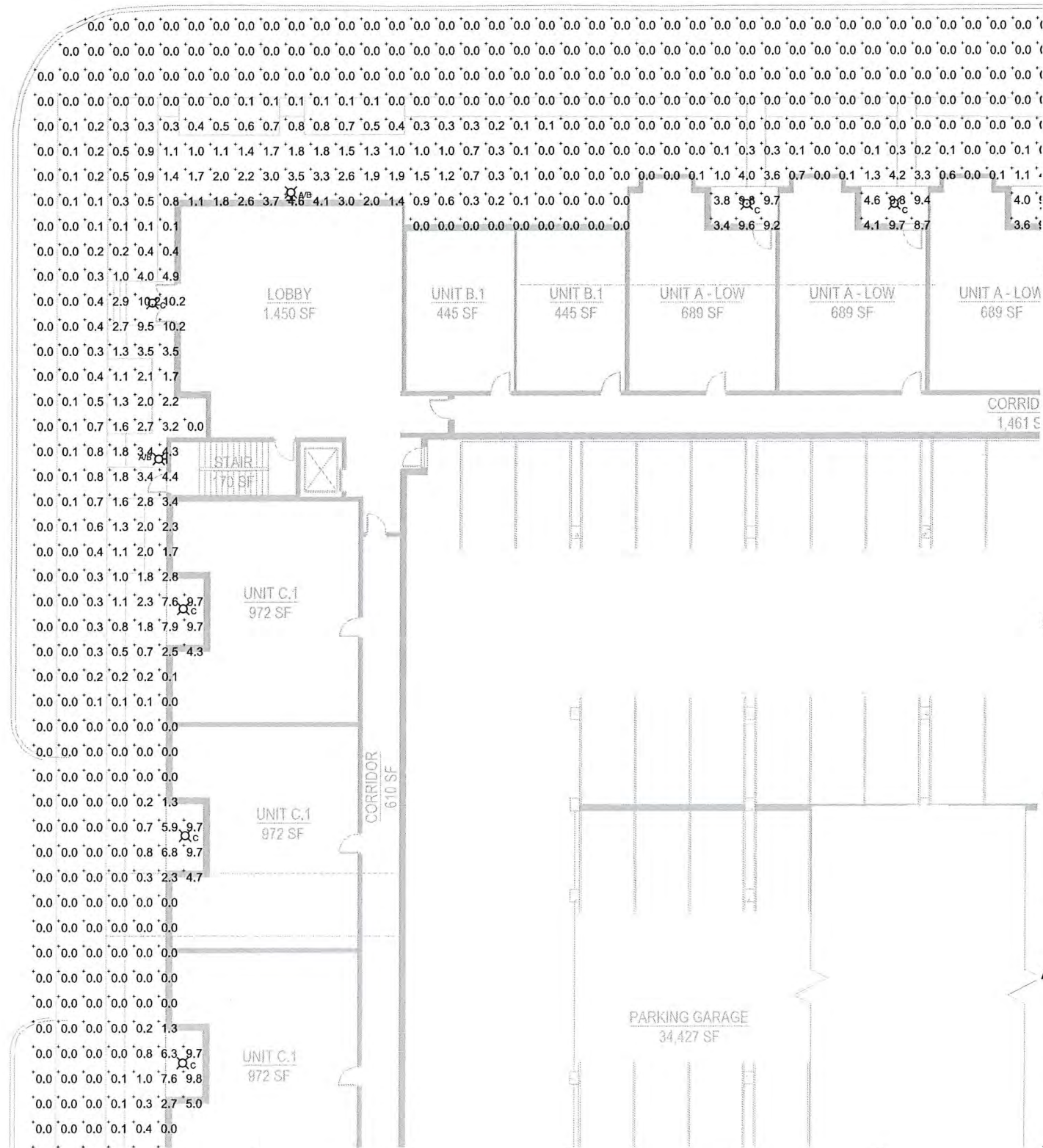
PROJECT MANAGER JDR

PROJECT NUMBER 14339-01

DATE 12/28/2015

LEVEL 01
PHOTOMETRIC PLAN -
AREA A

E01





epstein uhen : architects

milwaukee 333 East Chicago Street
Milwaukee, Wisconsin 53202
telephone 414.271.5350
madison 309 West Johnson Street, Suite 202
Madison, Wisconsin 53703
telephone 608.442.5350

CALCULATION SUMMARY					
LABELS	AVERAGE	MAXIMUM	MINIMUM	MAX/MIN	AVG/MIN
LEVEL 01	1.3fc	15.0fc	0.0fc	N/A	N/A
LEVEL 03	1.2fc	67.0fc	0.0fc	N/A	N/A
LEVEL 11	4.3fc	102.6fc	0.0fc	N/A	N/A

LUMINAIRE SCHEDULE			
TYPE	MANUFACTURER	CATALOG NUMBER	LUMENS
A/B	LITHONIA	CSXWLED-30C-700-40K-T2M	6,695
C	GOTHAM	EVO 40-10-6AR-MD-LD	1,059
D	LUMIERE	303-B1-LEDB2-4000-T5X-42	1,159 (2@579)
E	LUMIERE	303-P1-LED-B1-4000-T5X-18	723

PROJECT INFORMATION

STONE HOUSE
MIXED USE EAST
WASHINGTON

1000 E.
WASHINGTON
MADISON, WI 53703

ISSUANCE AND REVISIONS

LAND USE APPLICATION
UDC FINAL REVIEW

#	DATE	DESCRIPTION
---	------	-------------

SHEET INFORMATION

**PROGRESS DOCUMENTS
NOT FOR CONSTRUCTION**

These documents reflect progress and intent and may be subject to change, including additional detail. These are not final construction documents and should not be used for final bidding or construction-related purposes.

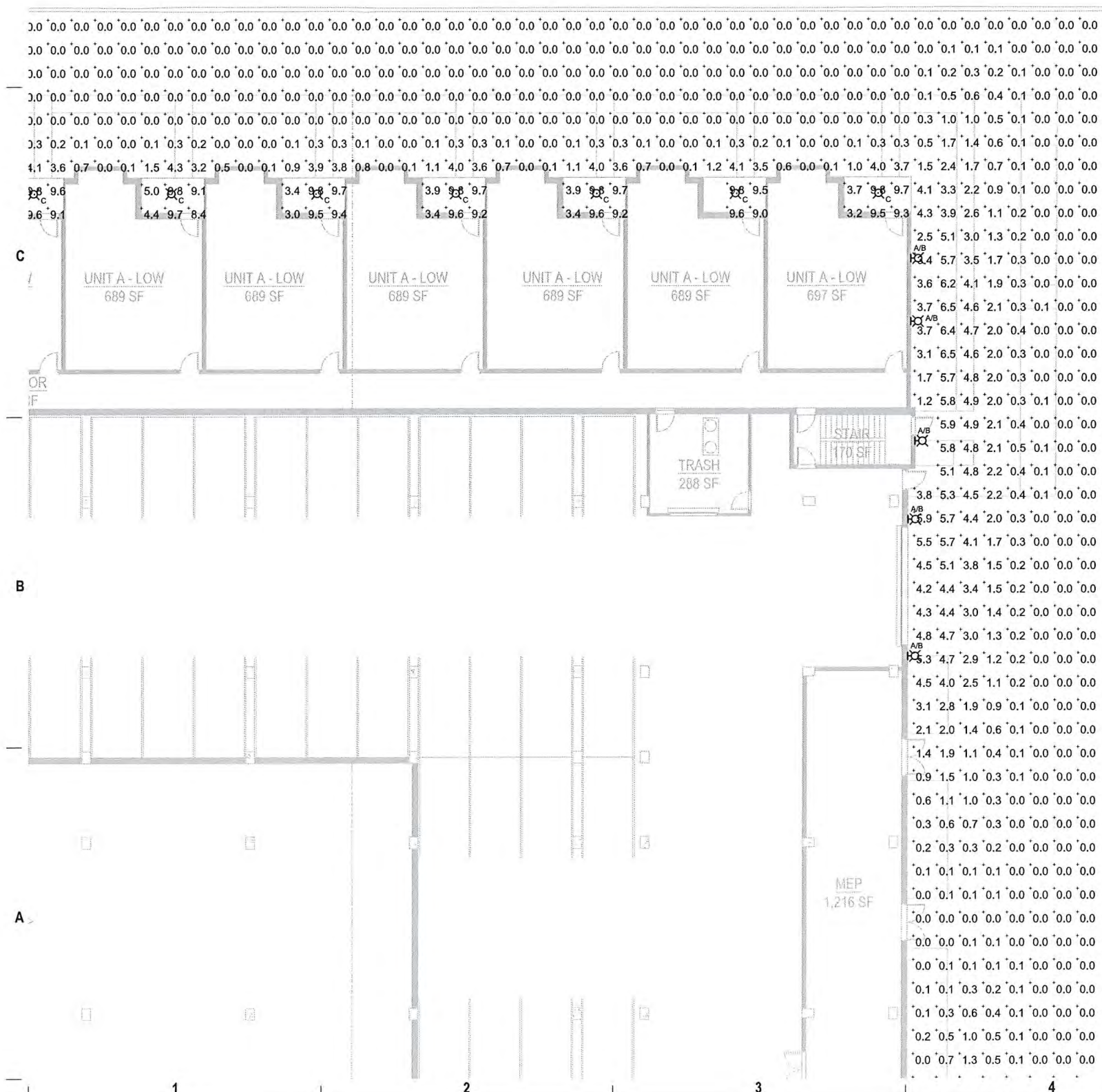
PROJECT MANAGER JDR

PROJECT NUMBER 14339-01

DATE 12/28/2015

LEVEL 01
PHOTOMETRIC PLAN -
AREA B

E02



LEVEL 01
PHOTOMETRIC PLAN - AREA B
SCALE: 1/8"=1'-0"

D

C

B

A

D

C

B

A



eppstein uhen : architects

milwaukee 333 East Chicago Street
Milwaukee, Wisconsin 53202
telephone 414.271.5350
madison 309 West Johnson Street, Suite 202
Madison, Wisconsin 53703
telephone 608.442.5350

PROJECT INFORMATION

STONE HOUSE
MIXED USE EAST
WASHINGTON

1000 E.
WASHINGTON
MADISON, WI 53703

ISSUANCE AND REVISIONS

RET. 5,466
LAND USE APPLICATION
UDC FINAL REVIEW

#	DATE	DESCRIPTION
---	------	-------------

SHEET INFORMATION

**PROGRESS DOCUMENTS
NOT FOR CONSTRUCTION**

These documents reflect progress and intent and may be subject to change, including additional detail. These are not final construction documents and should not be used for final bidding or construction-related purposes.

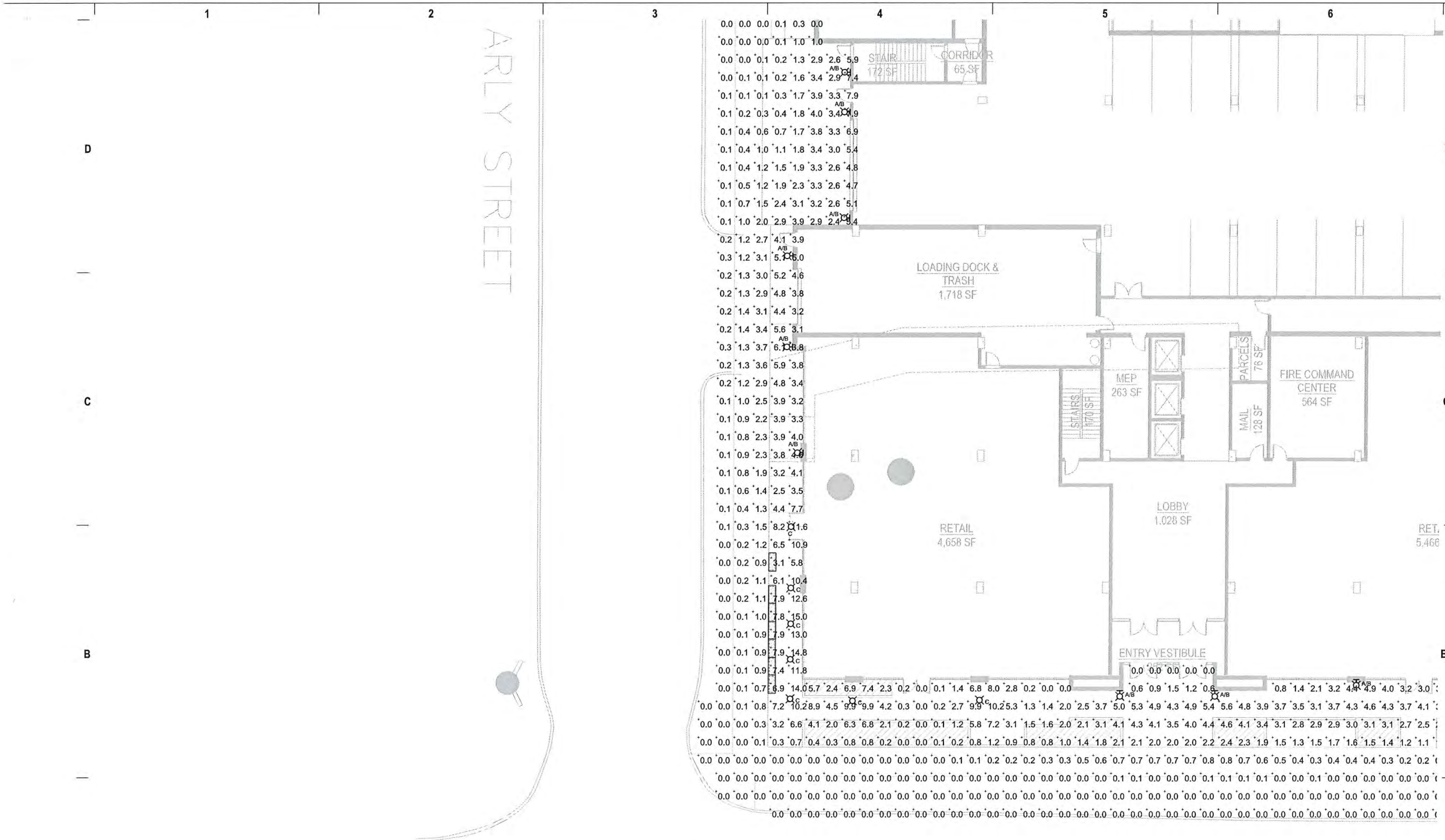
PROJECT MANAGER JDR

PROJECT NUMBER 14339-01

DATE 12/28/2015

LEVEL 01
PHOTOMETRIC PLAN -
AREA C

E03



LEVEL 01
PHOTOMETRIC PLAN - AREA C
SCALE: 1/8"=1'-0"

CALCULATION SUMMARY					
LABELS	AVERAGE	MAXIMUM	MINIMUM	MAX/MIN	AVG/MIN
LEVEL 01	1.3fc	15.0fc	0.0fc	N/A	N/A
LEVEL 03	1.2fc	67.0fc	0.0fc	N/A	N/A
LEVEL 11	4.3fc	102.6fc	0.0fc	N/A	N/A

LUMINAIRE SCHEDULE			
TYPE	MANUFACTURER	CATALOG NUMBER	LUMENS
A/B X	LITHONIA	CSXWLED-30C-700-40K-T2M	6,695
C X	GOTHAM	EVO 40-10-6AR-MD-LD	1,059
D X	LUMIERE	303-B1-LED2-4000-T5X-42	1,159 (2@579)
E X	LUMIERE	303-P1-LED-B1-4000-T5X-18	723



epstein uhen : architects

milwaukee 333 East Chicago Street
Milwaukee, Wisconsin 53202
telephone 414.271.5350
madison 309 West Johnson Street, Suite 202
Madison, Wisconsin 53703
telephone 608.442.5350

PROJECT INFORMATION

STONE HOUSE
MIXED USE EAST
WASHINGTON

1000 E.
WASHINGTON
MADISON, WI 53703

ISSUANCE AND REVISIONS

LAND USE APPLICATION
UDC FINAL REVIEW

#	DATE	DESCRIPTION

SHEET INFORMATION

**PROGRESS DOCUMENTS
NOT FOR CONSTRUCTION**

These documents reflect progress and intent and may be subject to change, including additional detail. These are not final construction documents and should not be used for final bidding or construction-related purposes.

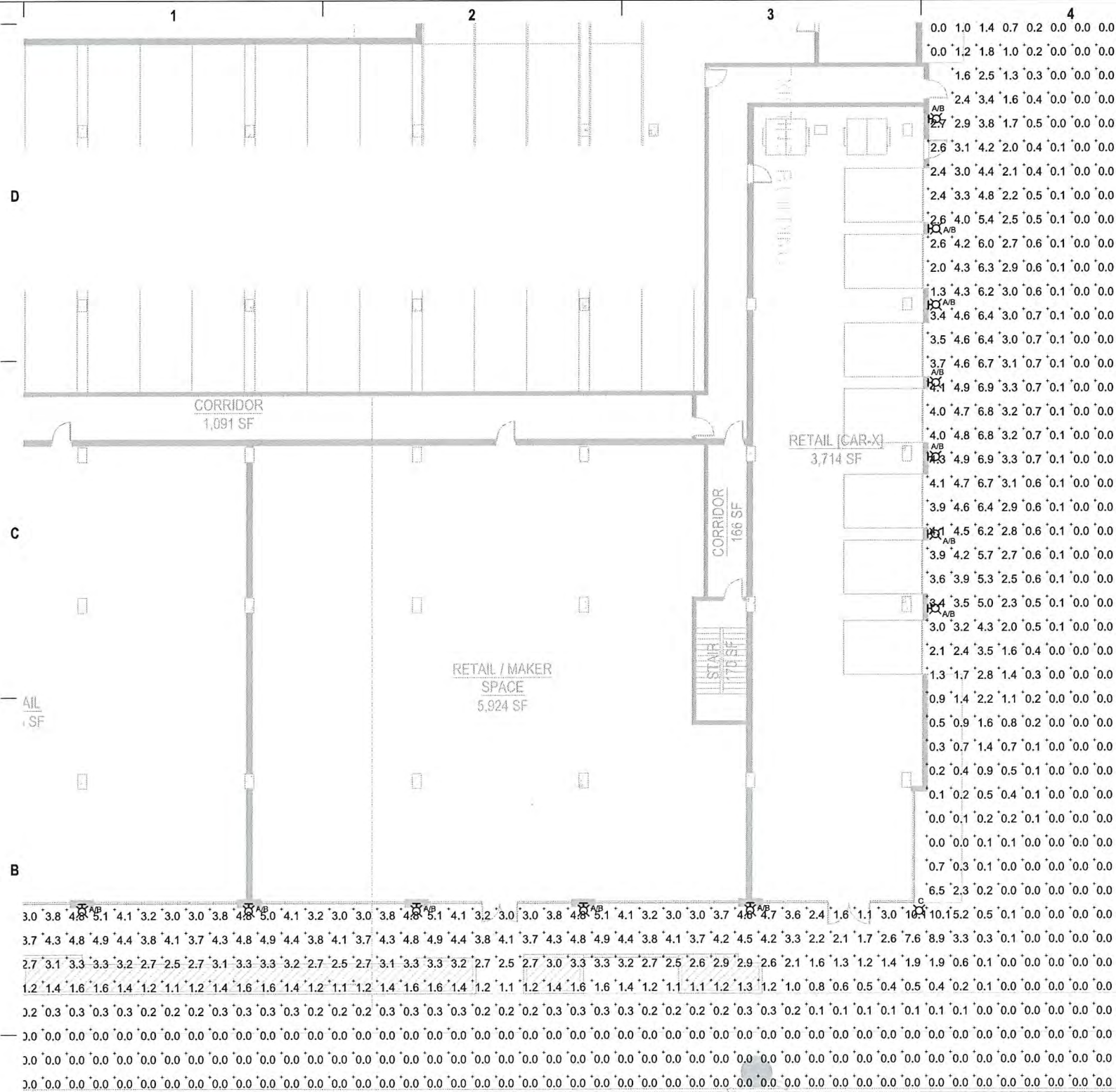
PROJECT MANAGER JDR

PROJECT NUMBER 14339-01

DATE 12/28/2015

LEVEL 01
PHOTOMETRIC PLAN -
AREA D

E04



LEVEL 01
PHOTOMETRIC PLAN - AREA D
SCALE: 1"=8'-0"

CALCULATION SUMMARY					
LABELS	AVERAGE	MAXIMUM	MINIMUM	MAX/MIN	AVG/MIN
LEVEL 01	1.3fc	15.0fc	0.0fc	N/A	N/A
LEVEL 03	1.2fc	67.0fc	0.0fc	N/A	N/A
LEVEL 11	4.3fc	102.6fc	0.0fc	N/A	N/A

LUMINAIRE SCHEDULE			
TYPE	MANUFACTURER	CATALOG NUMBER	LUMENS
A/B ☒	LITHONIA	CSXWLED-30C-700-40K-T2M	6,695
C ☒	GOTHAM	EVO 40-10-6AR-MD-LD	1,059
D ☒	LUMIERE	303-B1-LEDB2-4000-T5X-42	1,159 (2@579)
E ☒	LUMIERE	303-P1-LED-B1-4000-T5X-18	723



eppstein uhen : architects
 milwaukee 333 East Chicago Street
 Milwaukee, Wisconsin 53202
 telephone 414.271.5350
 madison 309 West Johnson Street, Suite 202
 Madison, Wisconsin 53703
 telephone 608.442.5350

PROJECT INFORMATION

**STONE HOUSE
 MIXED USE EAST
 WASHINGTON**

1000 E.
 WASHINGTON
 MADISON, WI 53703

ISSUANCE AND REVISIONS

LAND USE APPLICATION
 UDC FINAL REVIEW

#	DATE	DESCRIPTION
---	------	-------------

SHEET INFORMATION

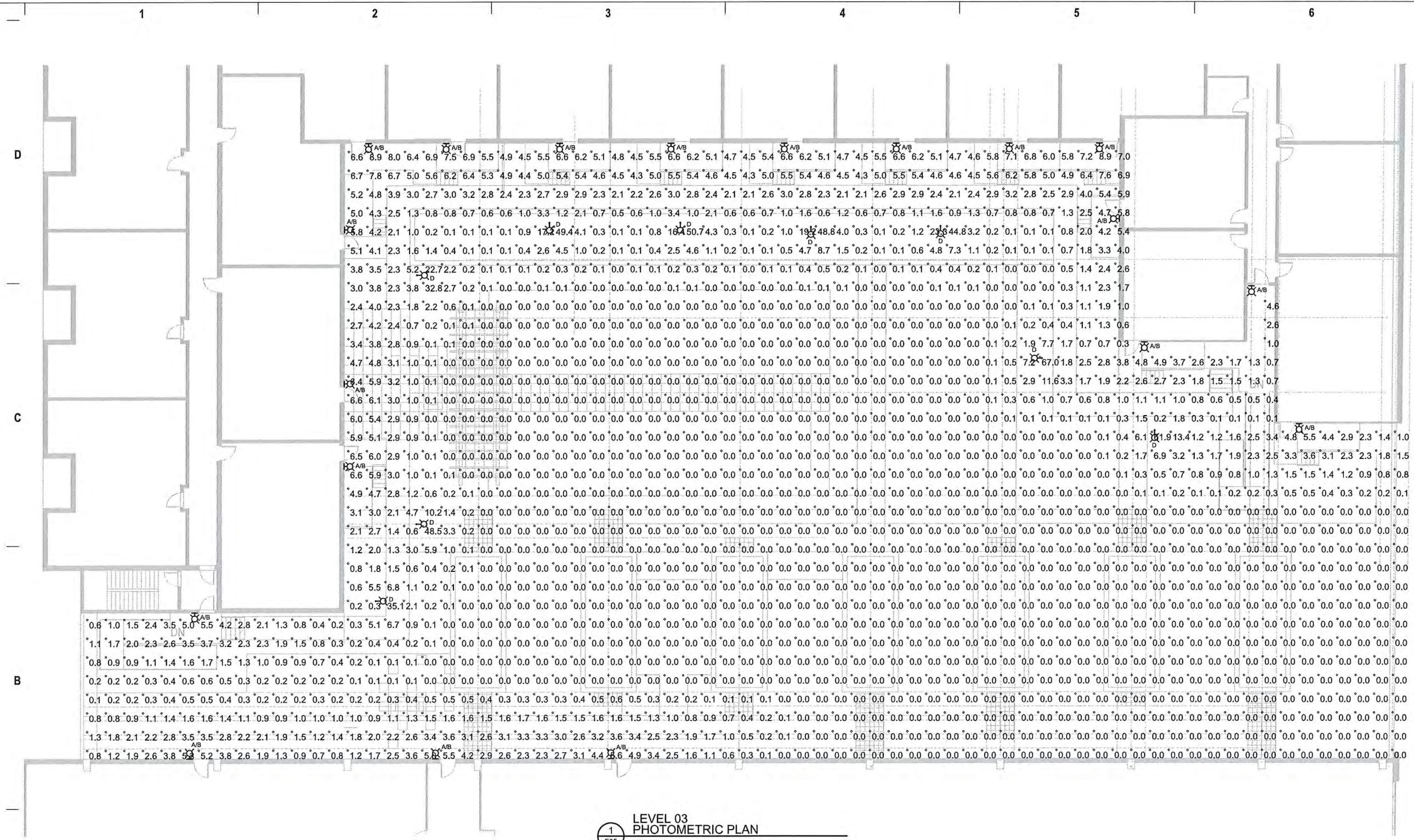
**PROGRESS DOCUMENTS
 NOT FOR CONSTRUCTION**

These documents reflect progress and intent and may be subject to change, including additional detail. These are not final construction documents and should not be used for final bidding or construction-related purposes.

PROJECT MANAGER JDR
 PROJECT NUMBER 14339-01
 DATE 12/28/2015

**LEVEL 03
 PHOTOMETRIC PLAN**

E05



**LEVEL 03
 PHOTOMETRIC PLAN**
 SCALE: 1/8"=1'-0"

CALCULATION SUMMARY					
LABELS	AVERAGE	MAXIMUM	MINIMUM	MAX/MIN	AVG/MIN
LEVEL 01	1.3fc	15.0fc	0.0fc	N/A	N/A
LEVEL 03	1.2fc	67.0fc	0.0fc	N/A	N/A
LEVEL 11	4.3fc	102.6fc	0.0fc	N/A	N/A

LUMINAIRE SCHEDULE			
TYPE	MANUFACTURER	CATALOG NUMBER	LUMENS
A/B	LITHONIA	CSXWLED-30C-700-40K-T2M	6,695
C	GOTHAM	EVO 40-10-6AR-MD-LD	1,059
D	LUMIERE	303-B1-LEDB2-4000-TSX-42	1,159 (2@579)
E	LUMIERE	303-P1-LED-B1-4000-TSX-18	723

CSXW LED LED Wall Luminaire

Specifications

- Height: 7.1/2"
- Width: 14.3/4"
- Depth: 9.5/16"
- Weight: 2.0 lbs
- Beam: 52 deg

Introduction

The Contour® Series luminaires offer traditional square fixtures with softened edges for a versatile look that complements many applications. The CSXW LED combines the latest in LED technology with the familiar aesthetics of the Contour® Series for stylish, high-performance illumination that lasts. It is ideal for replacing 100-400W metal halide in wall-mounted applications with typical energy savings of 80% and expected service life of over 100,000 hours.

Ordering Information

EXAMPLE: CSXW LED 30C 700 40K T3M HVOLT DUBVD

Code	Color	Temp	Temp	Temp	Temp	Temp	Temp	Temp	Temp
30C	3000K	700lm	40K	T3M	HVOLT	DUBVD			

Mounting Detail

Accessories

- CSXW LED 1 (100-400W)
- CSXW LED 2 (100-400W)
- CSXW LED 3 (100-400W)

Notes

- CSXW LED luminaire is not for use in wet or damp locations.
- CSXW LED luminaire is not for use in outdoor applications.
- CSXW LED luminaire is not for use in hazardous locations.
- CSXW LED luminaire is not for use in Class II, III, or IV locations.
- CSXW LED luminaire is not for use in Class I, Division 2 locations.
- CSXW LED luminaire is not for use in Class I, Division 1 locations.
- CSXW LED luminaire is not for use in Class I, Division 0 locations.
- CSXW LED luminaire is not for use in Class I, Division 0, Group A locations.
- CSXW LED luminaire is not for use in Class I, Division 0, Group B locations.
- CSXW LED luminaire is not for use in Class I, Division 0, Group C locations.

CSXW LED
 100-400W
 3000K
 700lm
 40K
 T3M
 HVOLT
 DUBVD

8" Evo® Downlight

Introduction

The 8" Evo® Downlight is a high-performance, square, recessed ceiling luminaire. It features a unique, rounded design and is available in three different beam spreads: 36°, 48°, and 60°. The Evo® Downlight is ideal for a wide range of applications, from residential to commercial.

Specifications

- Beam Spread: 36°, 48°, 60°
- Color Temperature: 2700K, 3000K, 3500K, 4000K, 5000K
- Power: 10W, 15W, 20W, 25W, 30W, 35W, 40W, 45W, 50W
- Dimensions: 8" diameter

Ordering Information

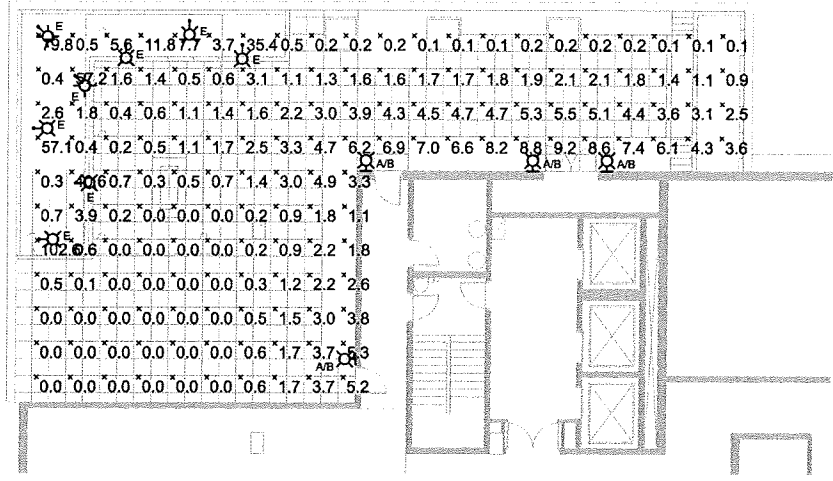
EXAMPLE: 8" Evo® 3000K 10W 36°

Code	Color	Temp	Temp	Temp	Temp	Temp	Temp
3000K	10W	36°					

Notes

- 8" Evo® Downlight is not for use in wet or damp locations.
- 8" Evo® Downlight is not for use in outdoor applications.
- 8" Evo® Downlight is not for use in hazardous locations.
- 8" Evo® Downlight is not for use in Class II, III, or IV locations.
- 8" Evo® Downlight is not for use in Class I, Division 2 locations.
- 8" Evo® Downlight is not for use in Class I, Division 1 locations.
- 8" Evo® Downlight is not for use in Class I, Division 0 locations.
- 8" Evo® Downlight is not for use in Class I, Division 0, Group A locations.
- 8" Evo® Downlight is not for use in Class I, Division 0, Group B locations.
- 8" Evo® Downlight is not for use in Class I, Division 0, Group C locations.

8" Evo®
 10W
 36°



eua

epstein uhen : architects

milwaukee 333 East Chicago Street
 Milwaukee, Wisconsin 53202
 telephone 414.271.5350

madison 309 West Johnson Street, Suite 203
 Madison, Wisconsin 53703
 telephone 608.442.5350

PROJECT INFORMATION

STONE HOUSE MIXED USE EAST WASHINGTON

1000 E. WASHINGTON
 MADISON, WI 53703

ISSUANCE AND REVISIONS

LAND USE APPLICATION
UDC FINAL REVIEW

#	DATE	DESCRIPTION

SHEET INFORMATION

PROGRESS DOCUMENTS
NOT FOR CONSTRUCTION

These documents reflect progress and intent and may be subject to change, including additional detail. These are not final construction documents and should not be used for final bidding or construction-related purposes.

PROJECT MANAGER JDR

PROJECT NUMBER 14339-01

DATE 12/28/2015

LEVEL 11 PHOTOMETRIC PLAN

E06

© Epstein Uhen Architects, Inc.

303-B1-LED81 EON LED

DESCRIPTION

The Lumière EON LED 303-B1-LED81 is a compact, low profile, dimmable LED luminaire that provides directional lighting via a fixed head. The 303-B1-LED81 has a simple, clean design and is ideal for a wide range of applications. It features a unique, rounded design and is available in three different beam spreads: 36°, 48°, and 60°.

Specifications

- Beam Spread: 36°, 48°, 60°
- Color Temperature: 2700K, 3000K, 3500K, 4000K, 5000K
- Power: 10W, 15W, 20W, 25W, 30W, 35W, 40W, 45W, 50W
- Dimensions: 8" diameter

Ordering Information

EXAMPLE: 303-B1-LED81 3000K 10W 36°

Code	Color	Temp	Temp	Temp	Temp	Temp	Temp
3000K	10W	36°					

Notes

- 303-B1-LED81 luminaire is not for use in wet or damp locations.
- 303-B1-LED81 luminaire is not for use in outdoor applications.
- 303-B1-LED81 luminaire is not for use in hazardous locations.
- 303-B1-LED81 luminaire is not for use in Class II, III, or IV locations.
- 303-B1-LED81 luminaire is not for use in Class I, Division 2 locations.
- 303-B1-LED81 luminaire is not for use in Class I, Division 1 locations.
- 303-B1-LED81 luminaire is not for use in Class I, Division 0 locations.
- 303-B1-LED81 luminaire is not for use in Class I, Division 0, Group A locations.
- 303-B1-LED81 luminaire is not for use in Class I, Division 0, Group B locations.
- 303-B1-LED81 luminaire is not for use in Class I, Division 0, Group C locations.

303-B1-LED81
 10W
 36°

303-P1-LED81 EON LED

DESCRIPTION

The Lumière EON LED 303-P1-LED81 is a compact, low profile, dimmable LED luminaire that provides directional lighting via a fixed head. The 303-P1-LED81 has a simple, clean design and is ideal for a wide range of applications. It features a unique, rounded design and is available in three different beam spreads: 36°, 48°, and 60°.

Specifications

- Beam Spread: 36°, 48°, 60°
- Color Temperature: 2700K, 3000K, 3500K, 4000K, 5000K
- Power: 10W, 15W, 20W, 25W, 30W, 35W, 40W, 45W, 50W
- Dimensions: 8" diameter

Ordering Information

EXAMPLE: 303-P1-LED81 3000K 10W 36°

Code	Color	Temp	Temp	Temp	Temp	Temp	Temp
3000K	10W	36°					

Notes

- 303-P1-LED81 luminaire is not for use in wet or damp locations.
- 303-P1-LED81 luminaire is not for use in outdoor applications.
- 303-P1-LED81 luminaire is not for use in hazardous locations.
- 303-P1-LED81 luminaire is not for use in Class II, III, or IV locations.
- 303-P1-LED81 luminaire is not for use in Class I, Division 2 locations.
- 303-P1-LED81 luminaire is not for use in Class I, Division 1 locations.
- 303-P1-LED81 luminaire is not for use in Class I, Division 0 locations.
- 303-P1-LED81 luminaire is not for use in Class I, Division 0, Group A locations.
- 303-P1-LED81 luminaire is not for use in Class I, Division 0, Group B locations.
- 303-P1-LED81 luminaire is not for use in Class I, Division 0, Group C locations.

303-P1-LED81
 10W
 36°

CALCULATION SUMMARY

LABELS	AVERAGE	MAXIMUM	MINIMUM	MAX/MIN	AVG/MIN
LEVEL 01	1.3fc	15.0c	0.0c	N/A	N/A
LEVEL 03	1.2fc	67.0c	0.0c	N/A	N/A
LEVEL 11	4.3fc	102.6c	0.0c	N/A	N/A

LUMINAIRE SCHEDULE

TYPE	MANUFACTURER	CATALOG NUMBER	LUMENS
AB ☒	LITHONIA	CSXWLED-30C-700-40K-T3M	6,695
C ☒	GOTHAM	EVO 40-10-6AR-MD-LD	1,059
D ☒	LUMIERE	303-B1-LED82-4000-TSX-42	1,159 (2@579)
E ☒	LUMIERE	303-P1-LED-B1-4000-TSX-18	723