

Midtown Commons Park - Master Plan

Appendix 1 - Public Input Meetings Presentations

- Public Meeting #1 07/29/25
- Public Meeting #2 10/22/25

MIDTOWN COMMONS PARK MASTER PLAN

**MADISON
PARKS**

Public Meeting #1
Virtual Meeting
7/29/2025

INTRODUCTION

Mike Sturm, City of Madison Parks Division Landscape Architect

Izzy Wilde, City of Madison Parks Division Landscape Architect

Note: This meeting is being recorded. It is a public record subject to disclosure.

By continuing to be in the meeting, you are consenting to being recorded and consenting to the record being released to public record requestors.

**MADISON
PARKS**

WELCOME

Thanks for coming, we're looking forward to working with you to plan Midtown Commons! We want to hear your thoughts and ideas, so to make sure everyone has an equal chance to speak...

- We will address comments/questions during discussion periods and at the end of the presentation.
- Please, no disparaging remarks about others' comments.
- If you are not comfortable speaking tonight, the Q&A button is another option, or email: msturm@cityofmadison.com

TONIGHT'S GOALS



Introduction to the master planning process

Review why the master planning process has been initiated

Review of draft master plan options

Next steps:

Gathering public input/comments, preparing plan revisions, follow-up public information meeting

MASTER PLANNING

What is it?

A master plan:

- Is a forum for public input
- Provides a common vision for future management/development of a property through a public engagement
- Analyzes site inventory and suitability
- Provides programming (aka activities), development, and resource protection *recommendations*

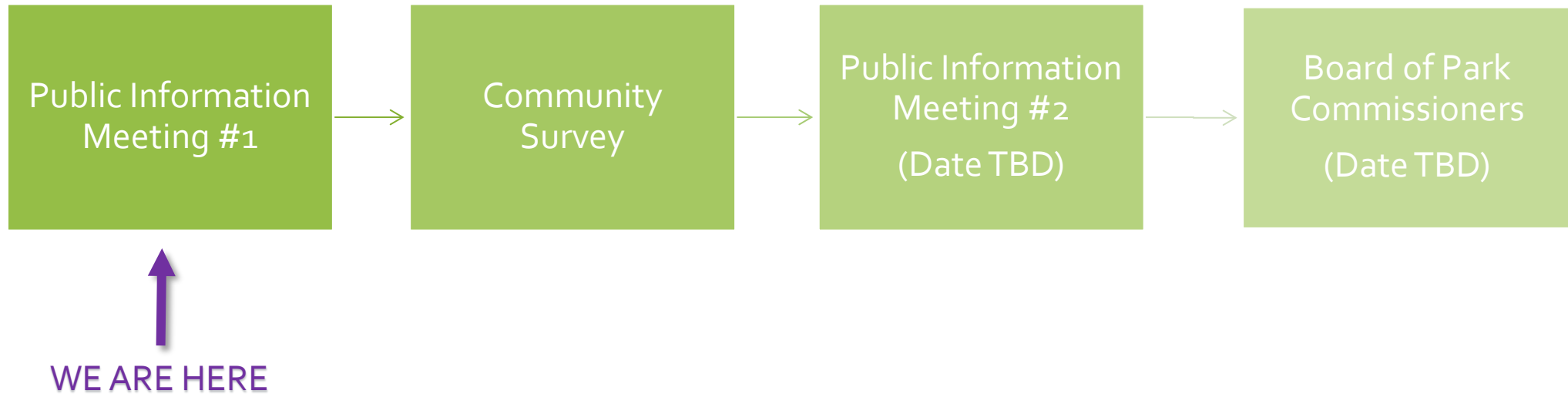
MASTER PLANNING

A master plan does NOT:

- Specify specific materials or finishes
- Designate exact locations of the proposed amenities and improvements
- Provide a planting plan or tree management plan
- Contain construction drawings (which include information like dimensions, colors, products, quality requirements, etc.)

Questions NOT answered by a master plan: Who is going to build it, when (exact date), and how much will it cost?

MASTER PLAN PROCESS



WHY NOW?



THROUGH THE YEARS...

1937



1962



1980

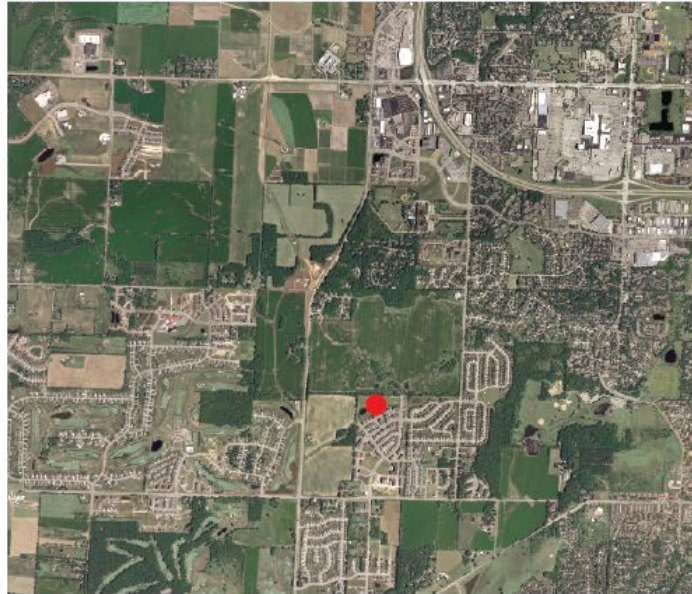


THROUGH THE YEARS...

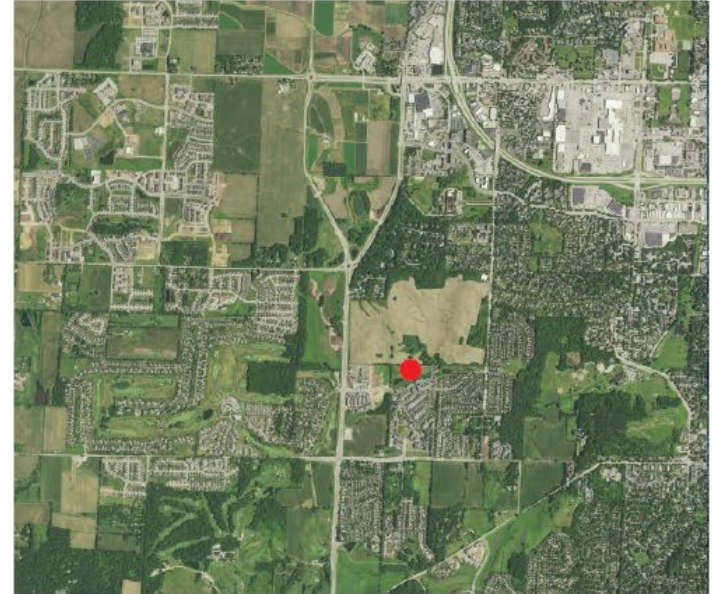
2000

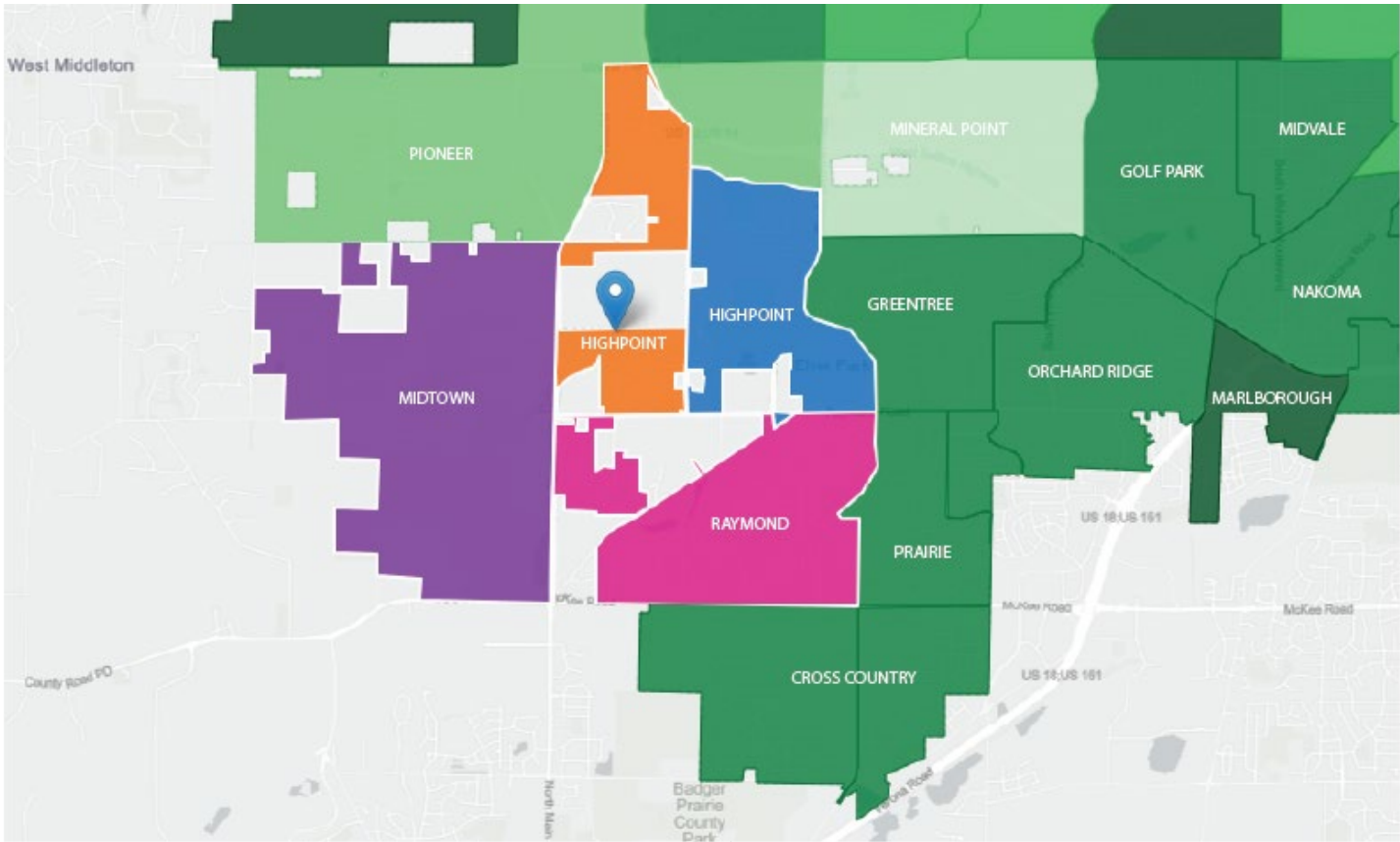


2010

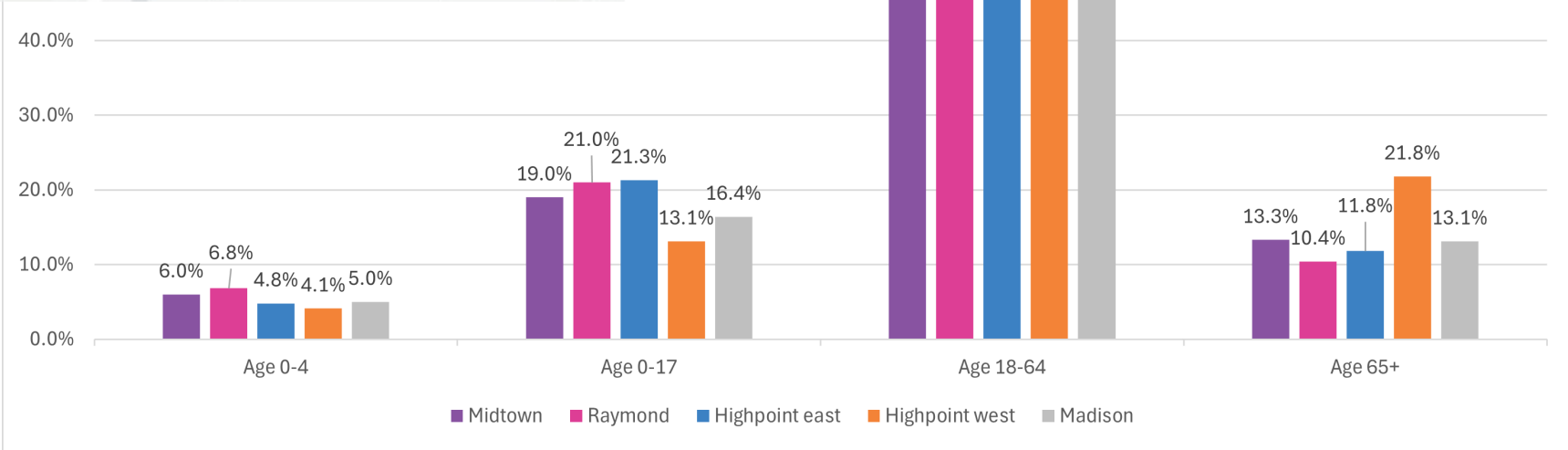


2022



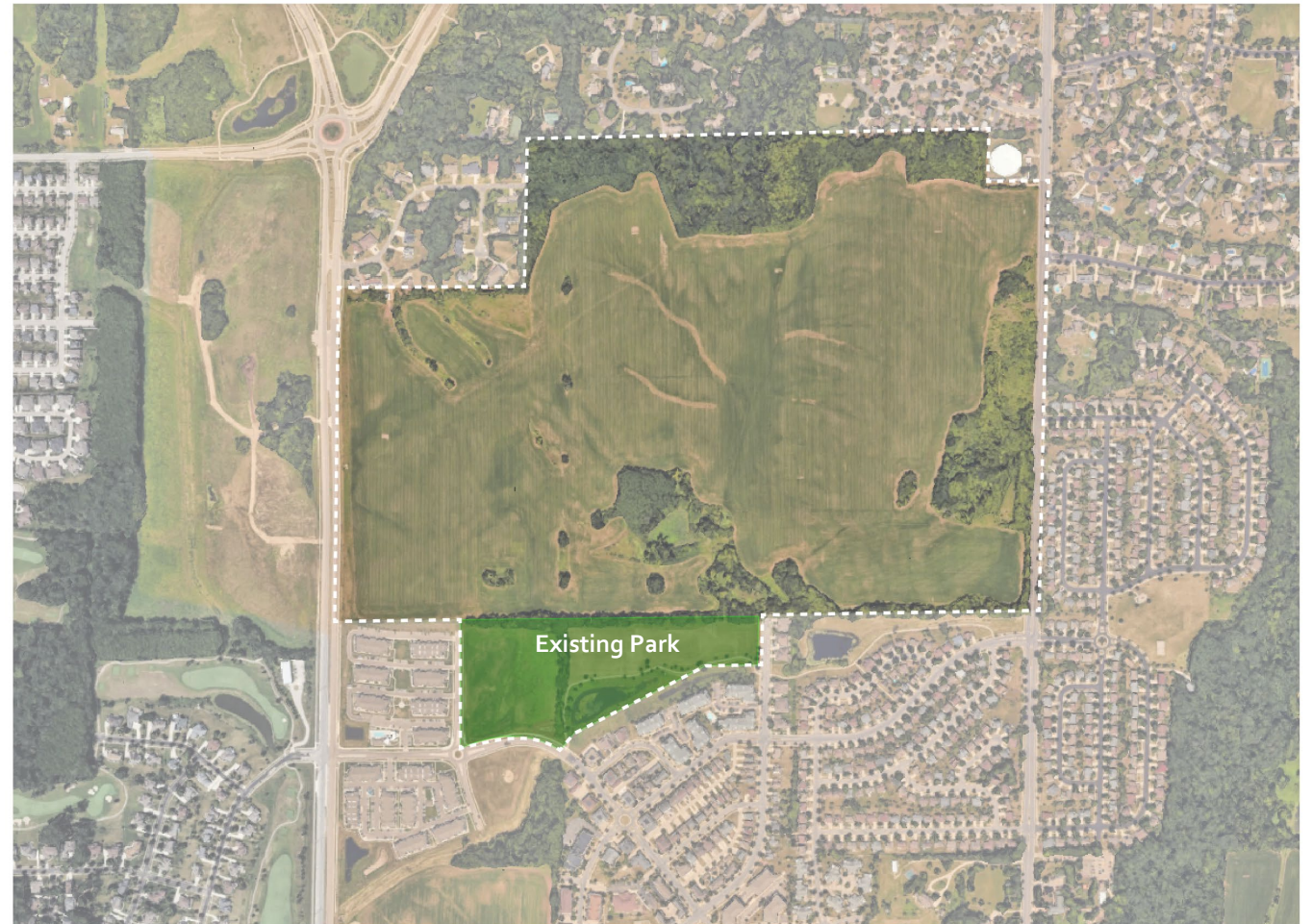


Age Demographics

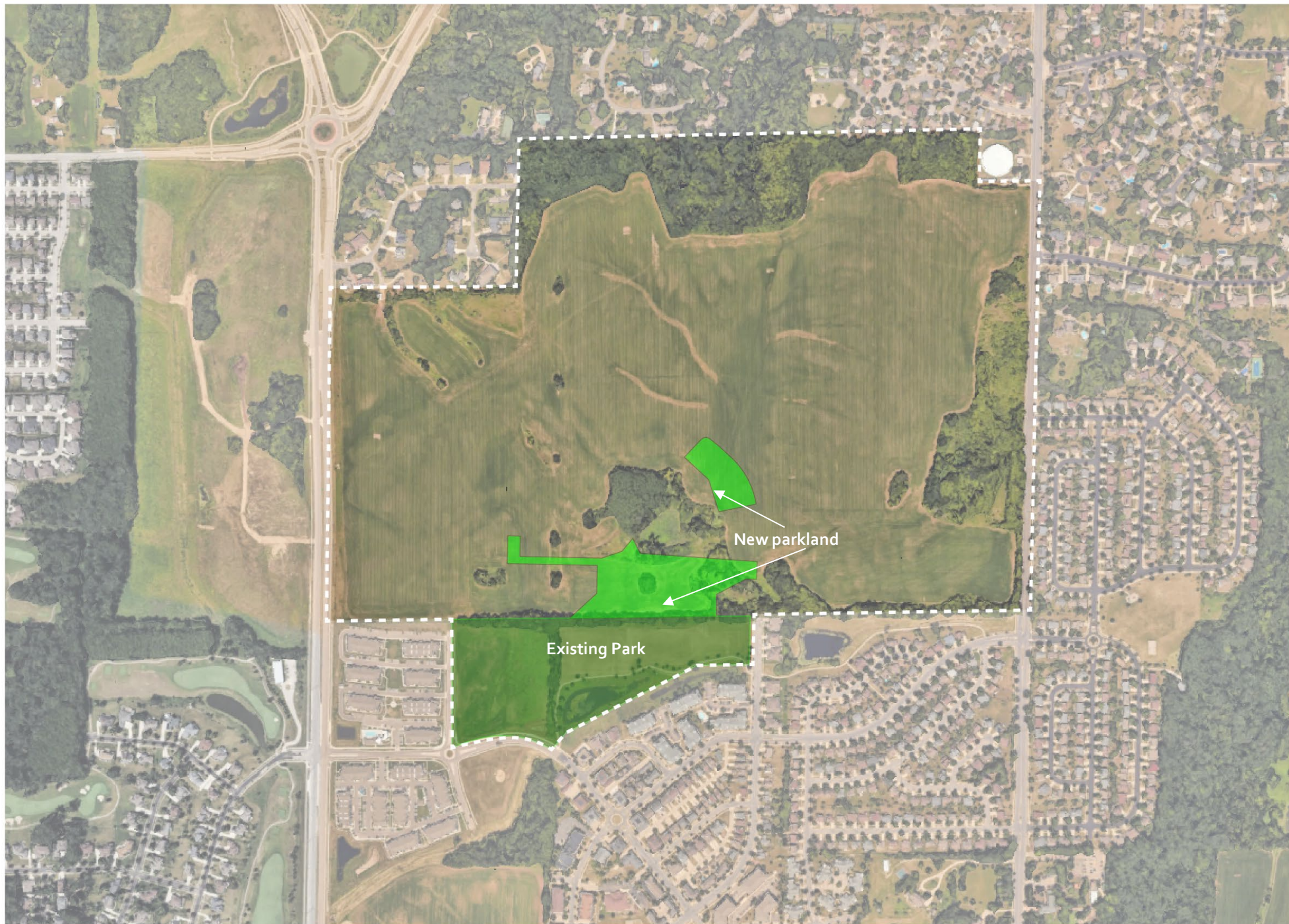


EXISTING CONDITIONS

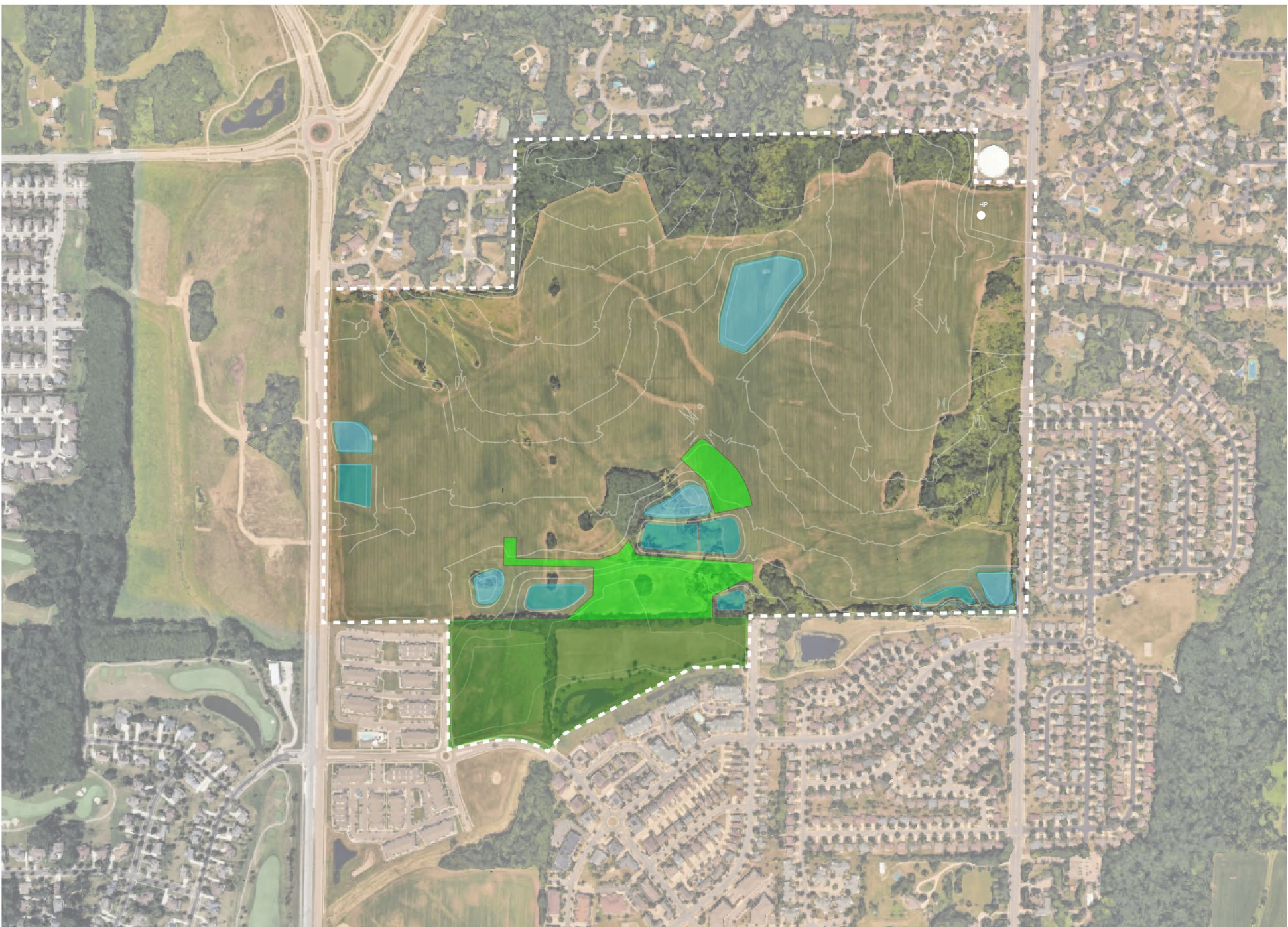
- Parkland
- Trails
- Topography
- Development
- Greenway
- Surrounding Area Park Amenities



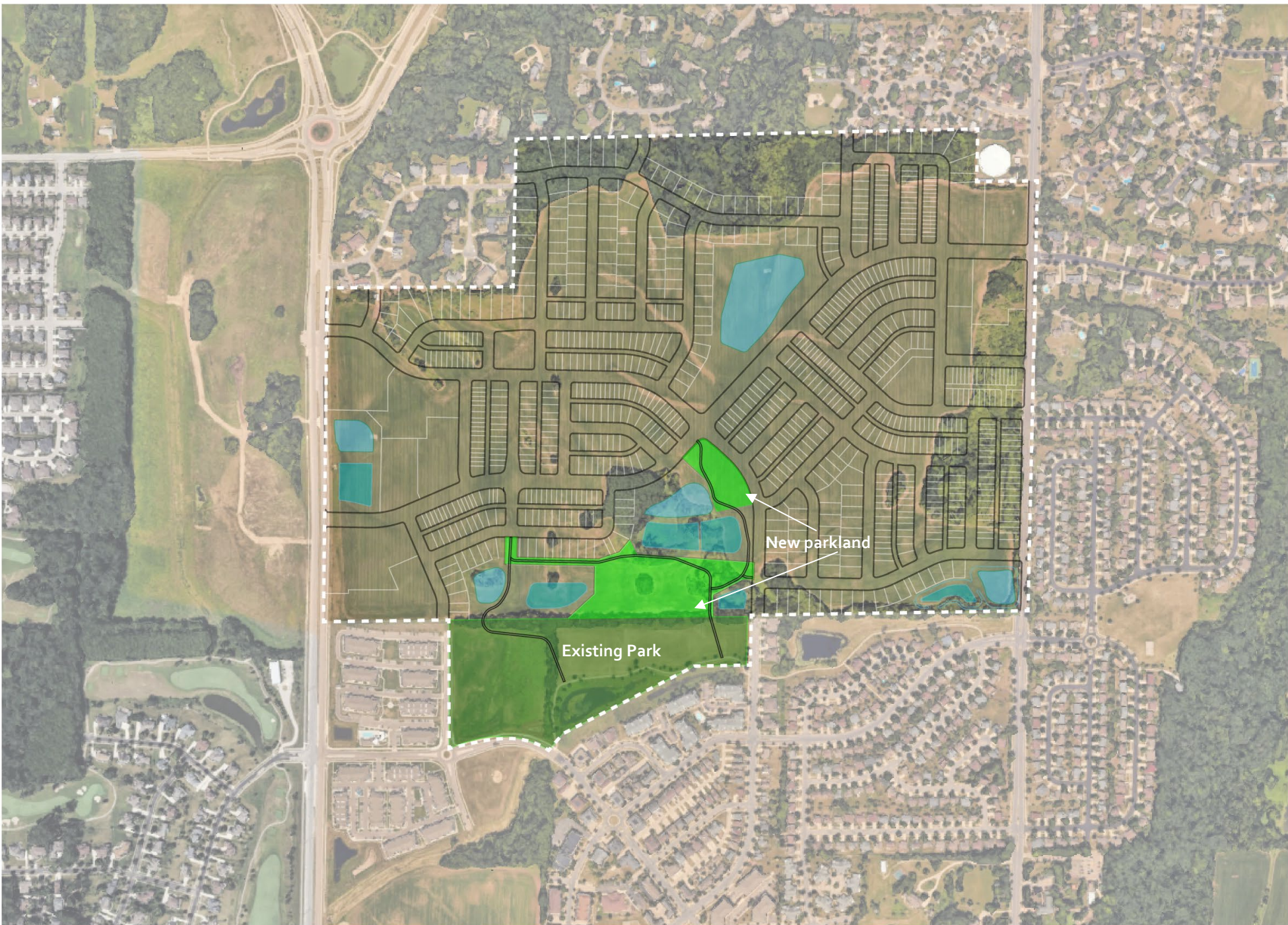
P
A
R
K
L
A
N
D



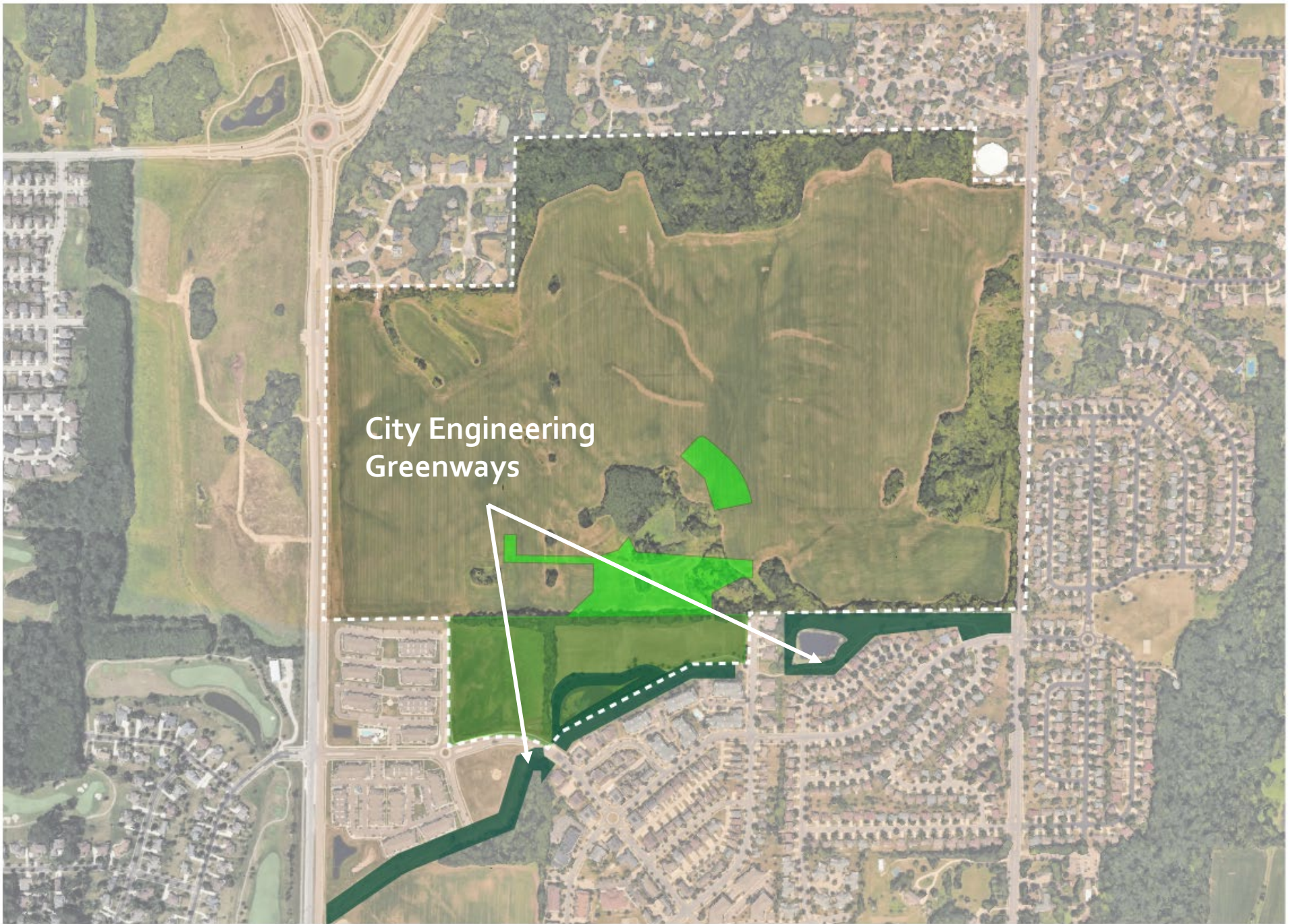
T O P O G R A P H Y



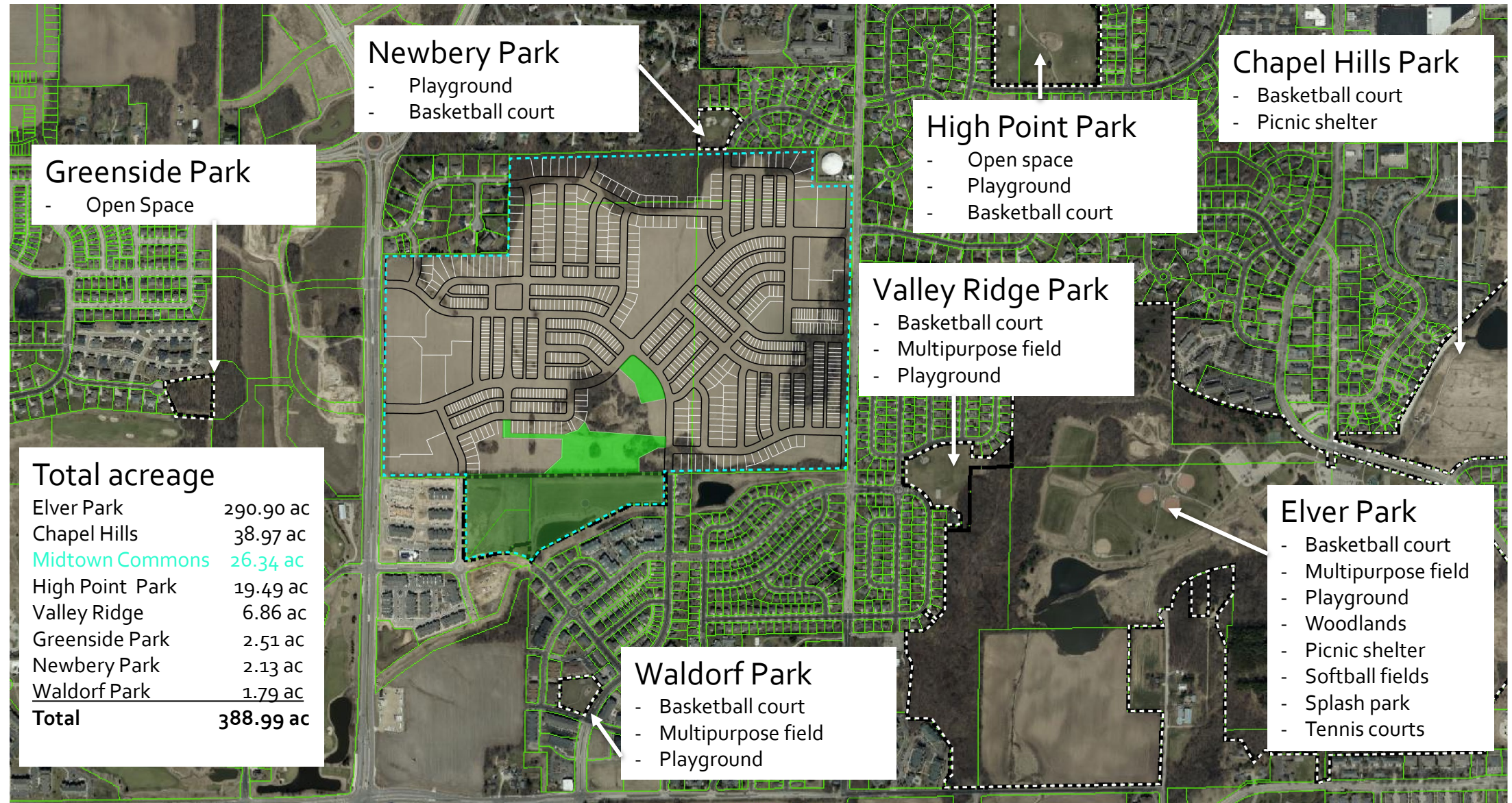
D
E
V
E
L
O
P
M
E
N
T



G
R
E
E
N
W
A
Y

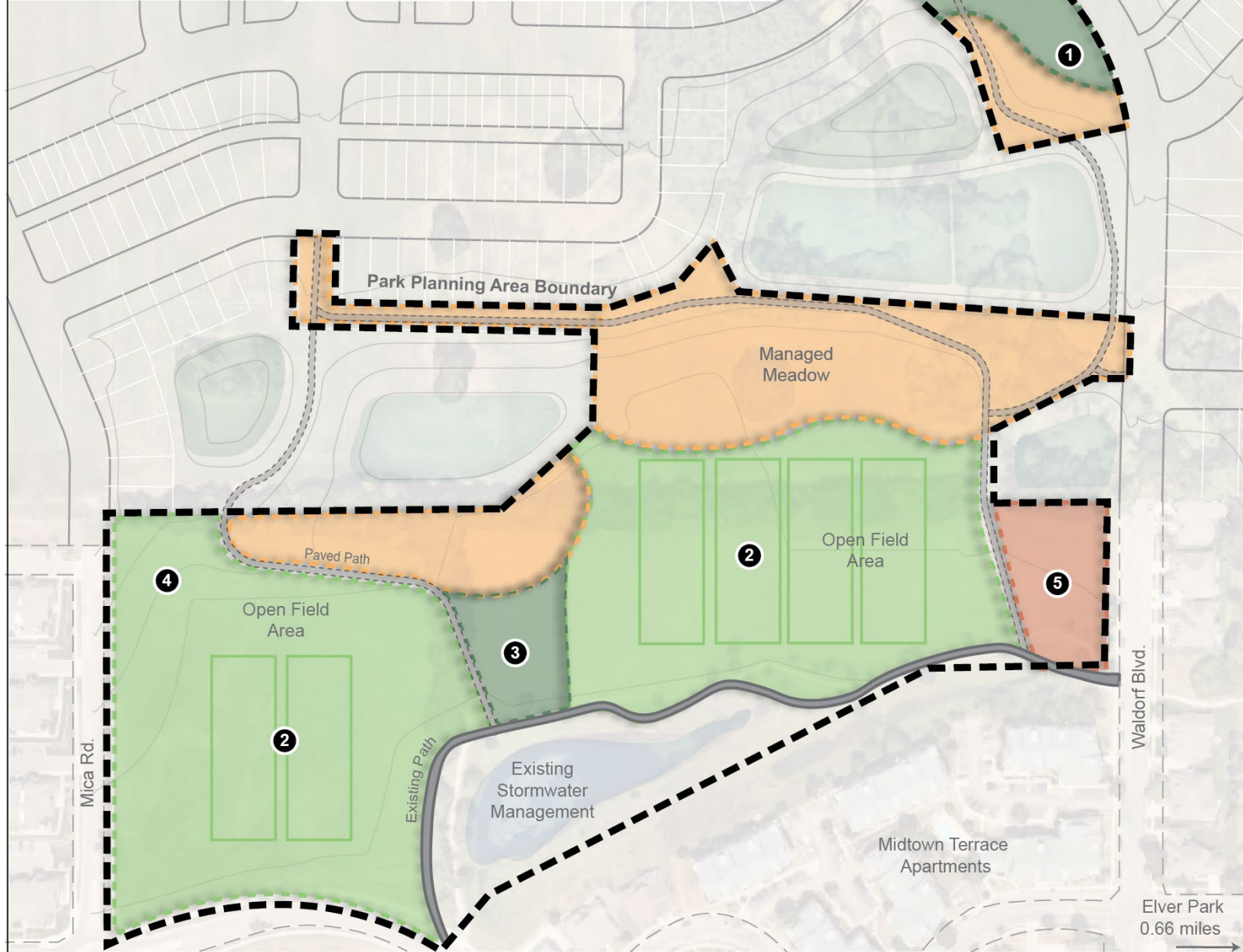


SURROUNDING AREA PARK AMENITIES





MASTER PLAN OPTIONS...




- 1 Sun Shelter and Traditional Playground
- 2 Athletic Fields
- 3 Warm-up and Rec Space
- 4 Sledding Hill
- 5 Potential Community Garden

 Managed Meadow

 Lawn and Shade Trees

 Potential Community Garden

 Open Field Area

0' 200' 
SCALE NORTH

Date: 07/29/2025

ATHLETIC FIELDS



COMMUNITY GARDEN

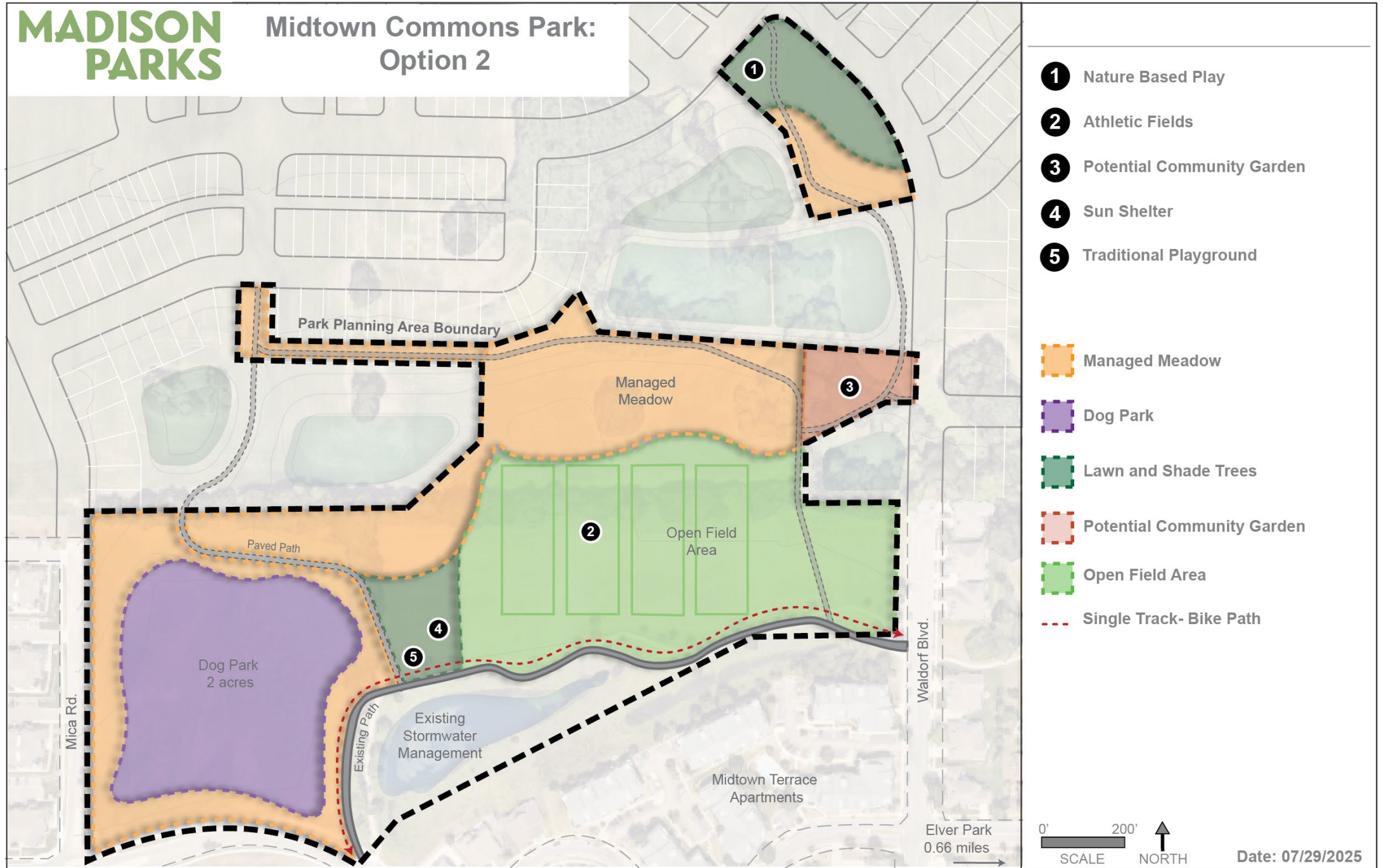


PLAYGROUND



MANAGED MEADOW





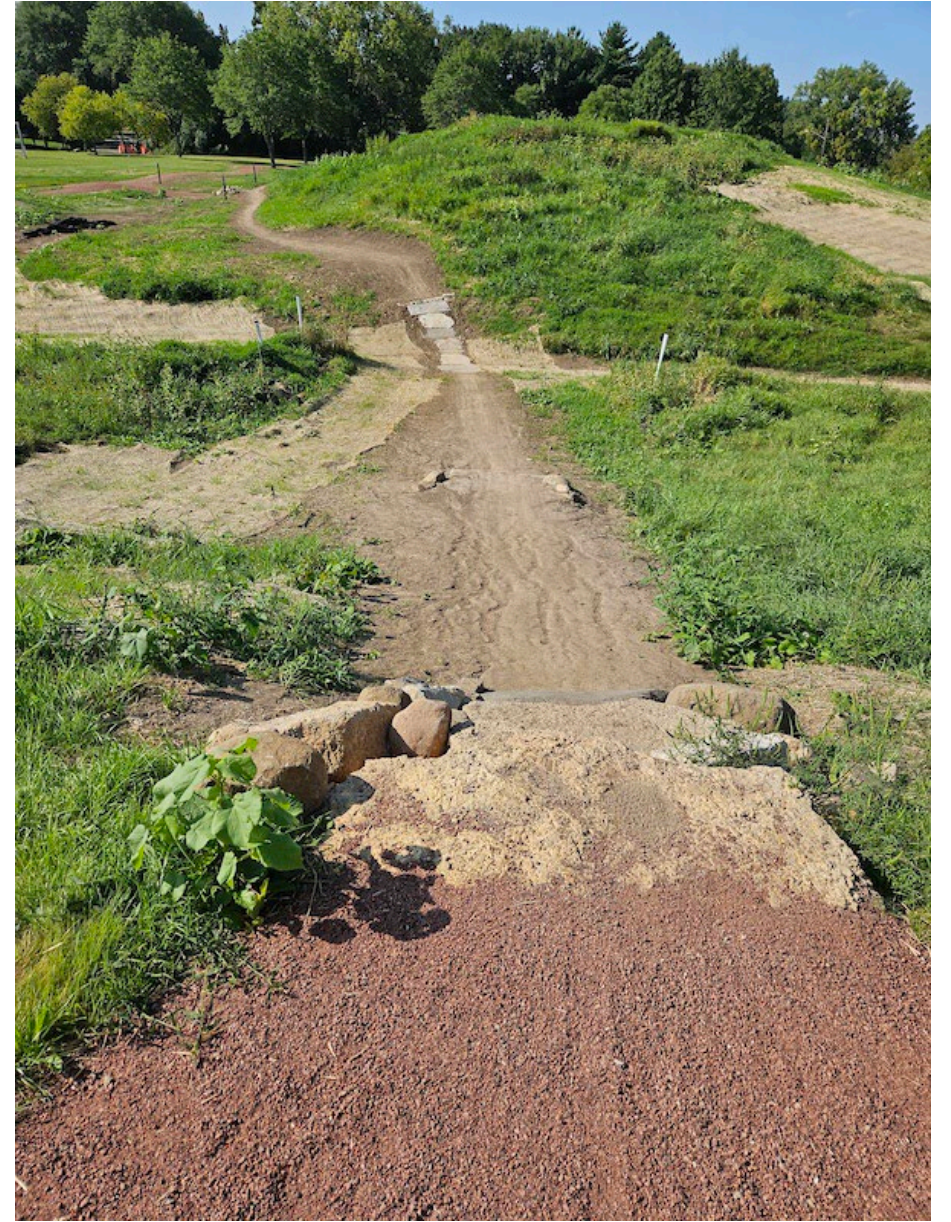
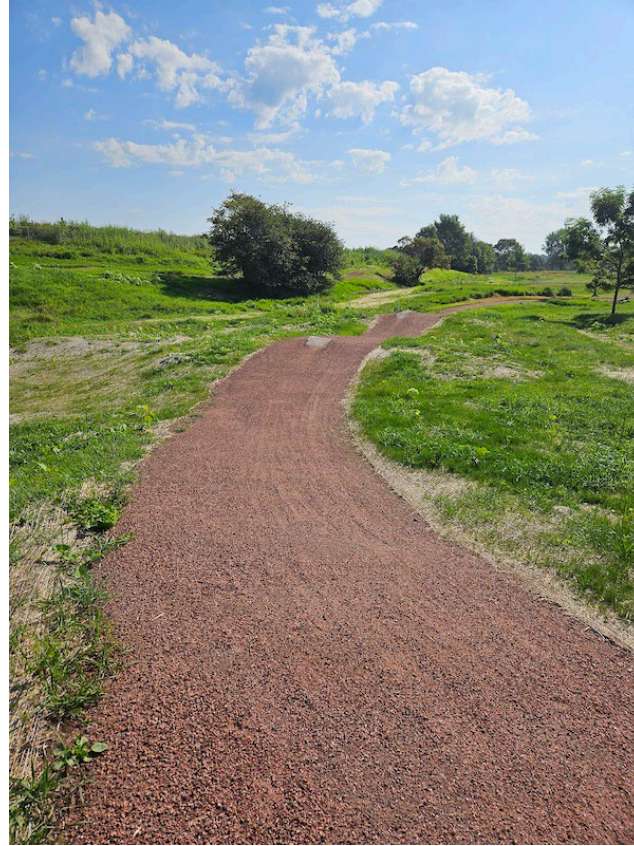
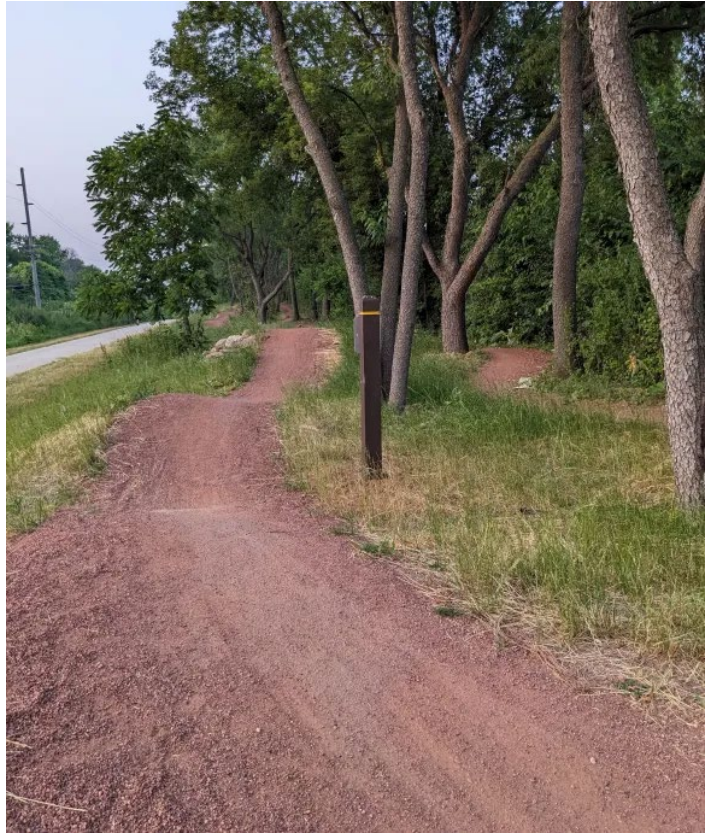
DOG PARK



NATURE PLAY



SINGLE TRACK





- 1 Community Patio (sun shelter, bench swing, lawn games)
- 2 Traditional Playground
- 3 Athletic Fields
- 4 Sledding Hill
- 5 Nature Based Play
- 6 Basketball Court
- Managed Meadow
- Dog Park
- Lawn and Shade Trees
- Open Field Area
- Single Track- Bike Path

Elver Park
0.66 miles

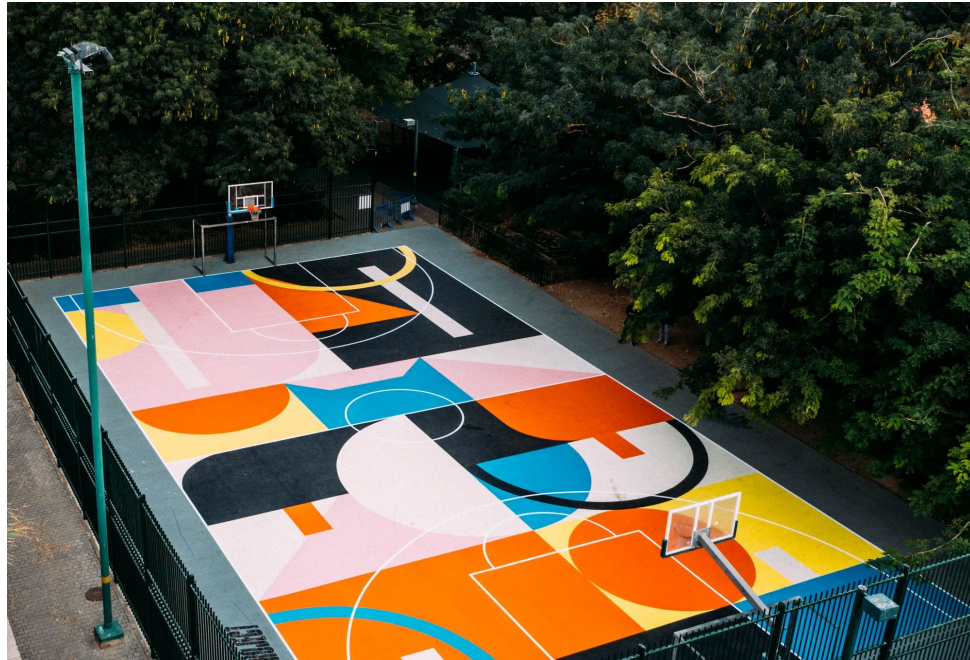
0' 200'
SCALE NORTH

Date: 07/29/2025

COMMUNITY PATIO

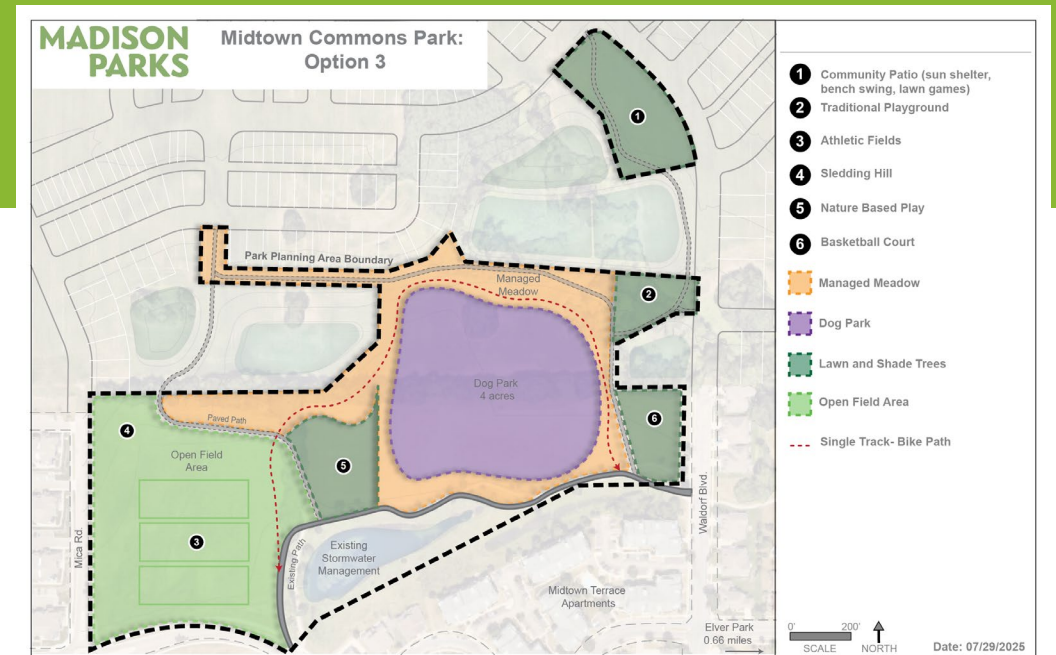
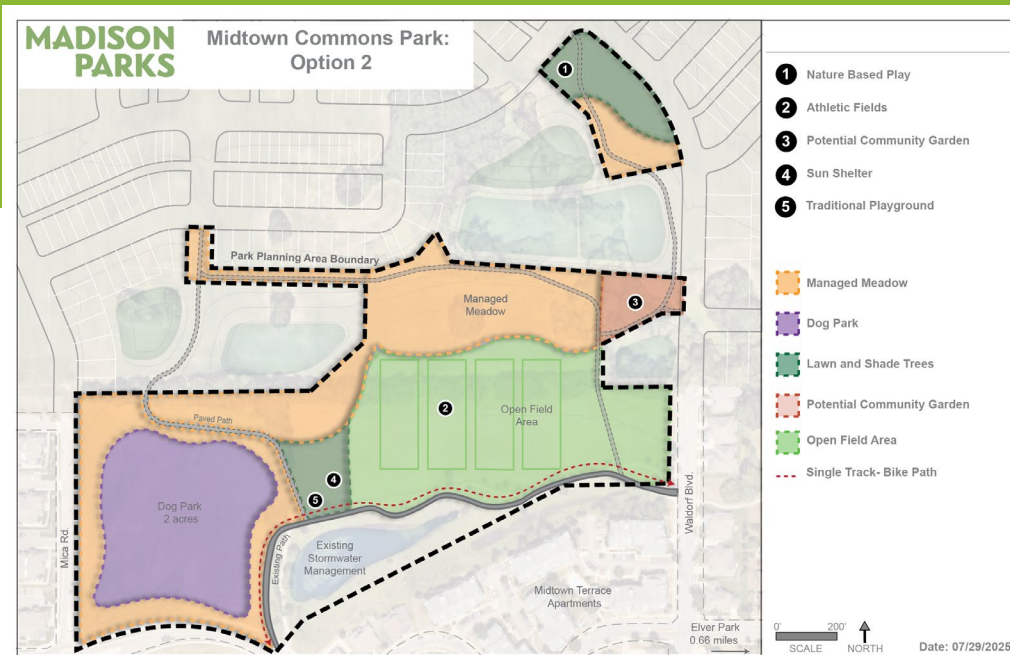
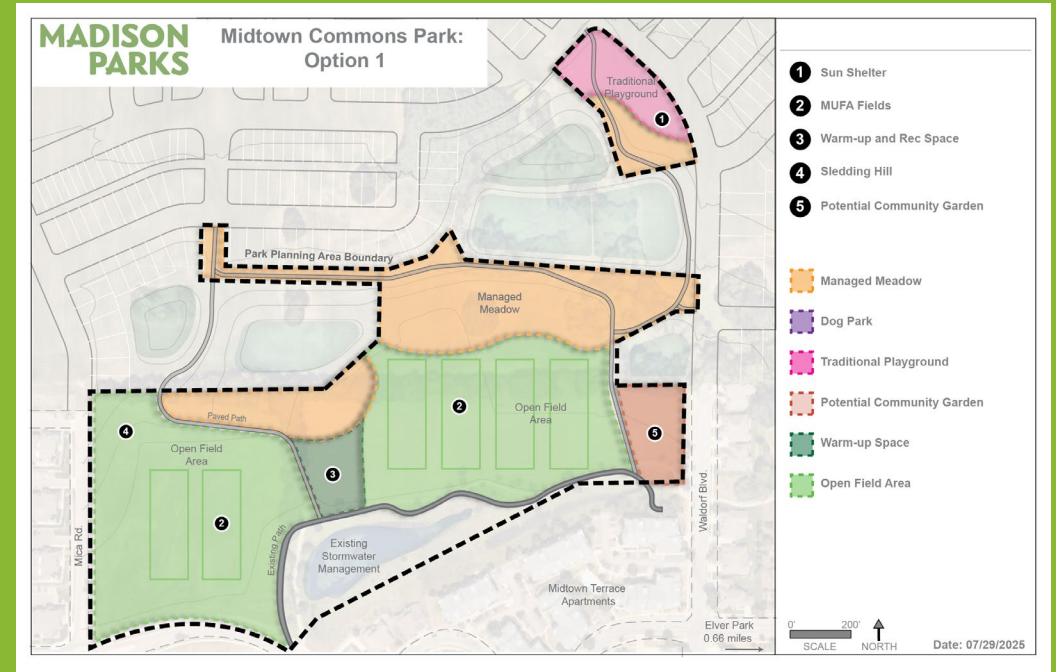


BASKETBALL COURT



WHICH OPTION DO YOU PREFER?

- A. Option 1
- B. Option 2
- C. Option 3
- D. I love them all! 😊



PUBLIC INPUT PERIOD

Please use the “raise hand” feature if you wish to speak. Another option is to submit your question through the Q&A button at the bottom of your screen.



NEXT STEPS

- Community Survey
- Gathering public input
 - Be sure to contact us with comments
 - Madison Parks will analyze public input and site conditions
 - What do residents want and what can the site provide?
- Public Input Meeting #2
 - Date To Be Determined
 - Revised plans will be presented for public review!

Watch the City Parks “Project Portal” website for the Community Survey and project updates!
<https://www.cityofmadison.com/parks/projects/midtown-commons-park-master-plan>



COMMENTS?

If you have additional comments, staff are available to listen to your comments. You may also email or call with your comments.

CONTACT US:
MIKE STURM
EMAIL: MSTURM@CITYOFMADISON.COM

**MADISON
PARKS**



**MADISON
PARKS**

Midtown Commons Park
Master Plan
Public Input Meeting #2

October 22, 2025
Presented by Mike Sturm

This meeting is being recorded.

It is a public record subject to disclosure.

By continuing to be in the meeting, you are consenting to being recorded and consenting to this record being released to public record requestors.

City Staff

- Mike Sturm, Parks Division Landscape Architect, Project Manager
- Izzy Wilde, Park Planner

Meeting Agenda

1

- Background Information
- Project Timeline
- Site Information and Context

2

- Presentation of revised Draft Master Plan
- Precedent Images

3

- Public Input

Madison Parks System

- The development and operations of the Madison Parks System is guided by the Parks and Open Space Plan
 - The 2025-2030 Park and Open Space Plan is expected to be adopted by the Common Council in October of 2025.
- Madison Parks ranked 19th out of the 100 largest cities in the US in the 2024 Trust for Public Land ParkScore
 - Ranked highly in Amenities and Access
 - Ranked 72nd in Investment per capita



Madison Parks System

By the Numbers

296 Parks covering 5,885 Acres

190 Playgrounds

147 Basketball Courts

91 Tennis or Pickleball Courts

29 Volleyball Courts

177 Multi-purpose Fields

19 Softball Fields

1,079 Benches

Park Master Plan

What is it?

- Dynamic long-term planning document that provides a framework for future development and improvements.
- Establish the general location recommendations for desired amenities and resource protection.
- The identified improvements are often implemented in phases, with each phase requiring further design development and public engagement before construction.

Questions answered by a Master Plan: What is going to happen and the general locations for the future park improvements

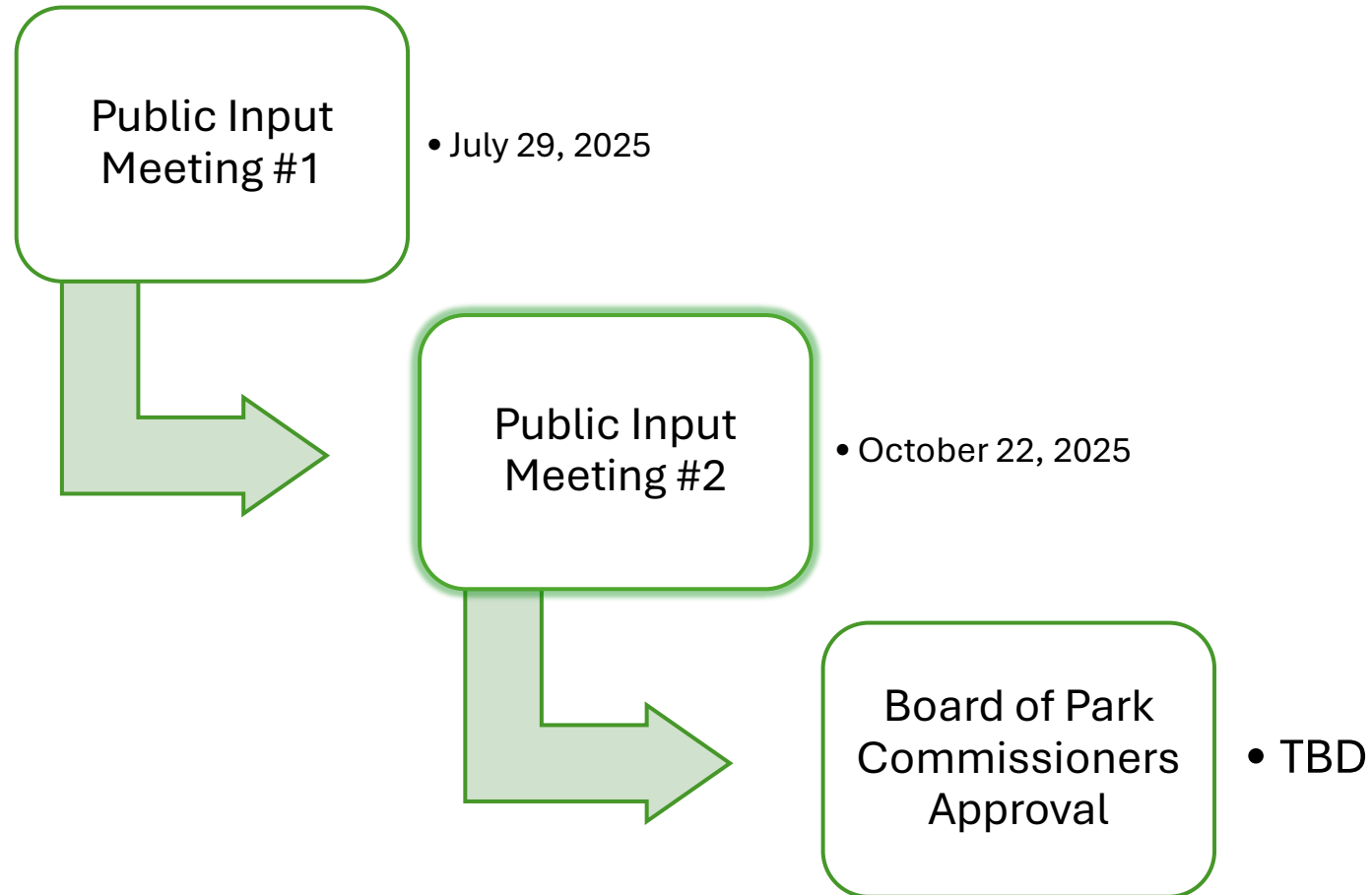
Park Master Plan

A Park Master Plan does NOT:

- Designate exact locations
- Specify specific materials or finishes
- Include a planting plan or tree management plan
- Contain construction drawings (which include information like dimensions, colors, products, quality requirements, etc.)

Questions NOT answered by a Park Master Plan: When are the improvements going to be built, and how much will it cost?

Project Timeline



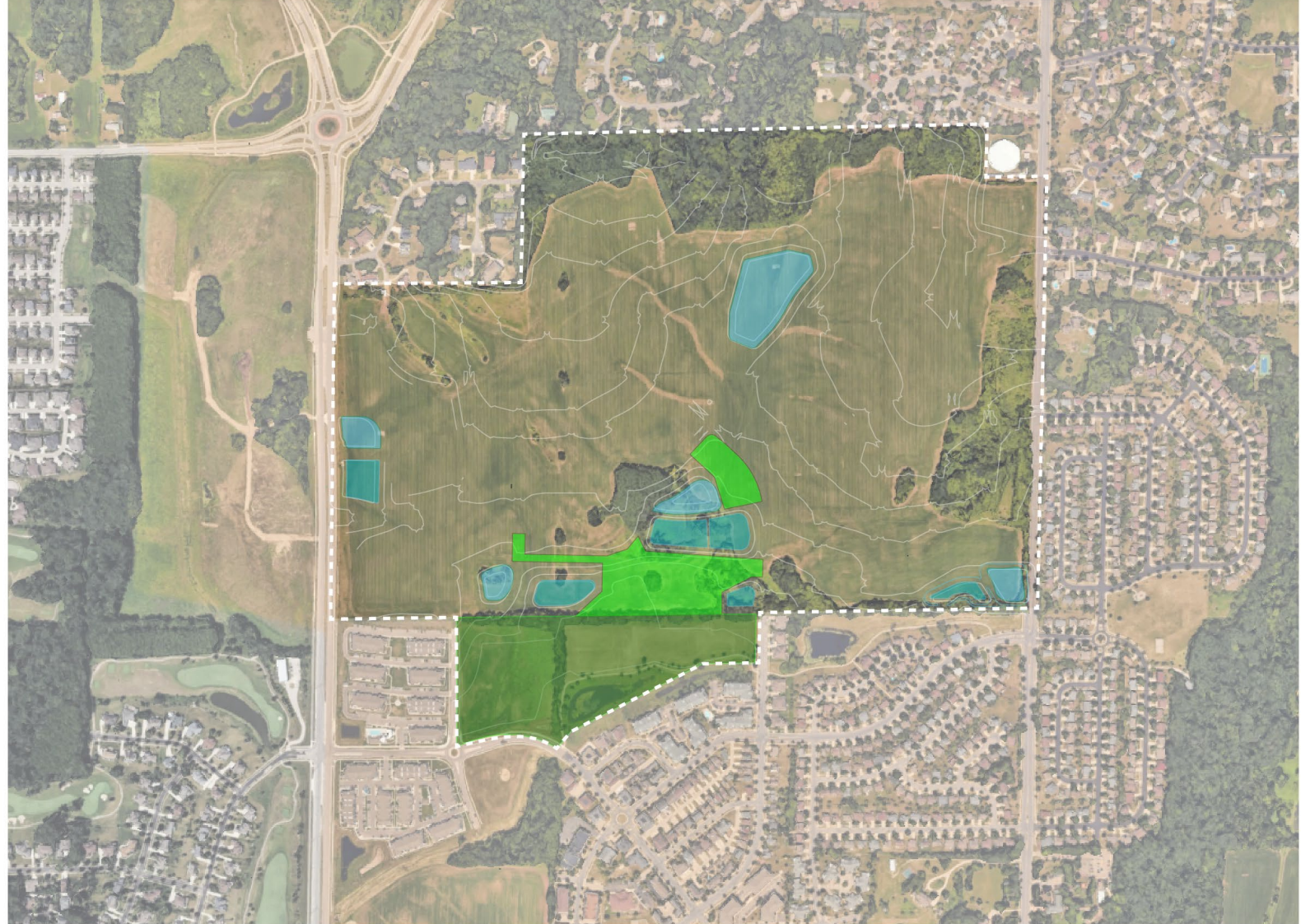


- Current park is over 26 acres
- Adding an additional 8.2 acres of parkland through new development of agricultural land



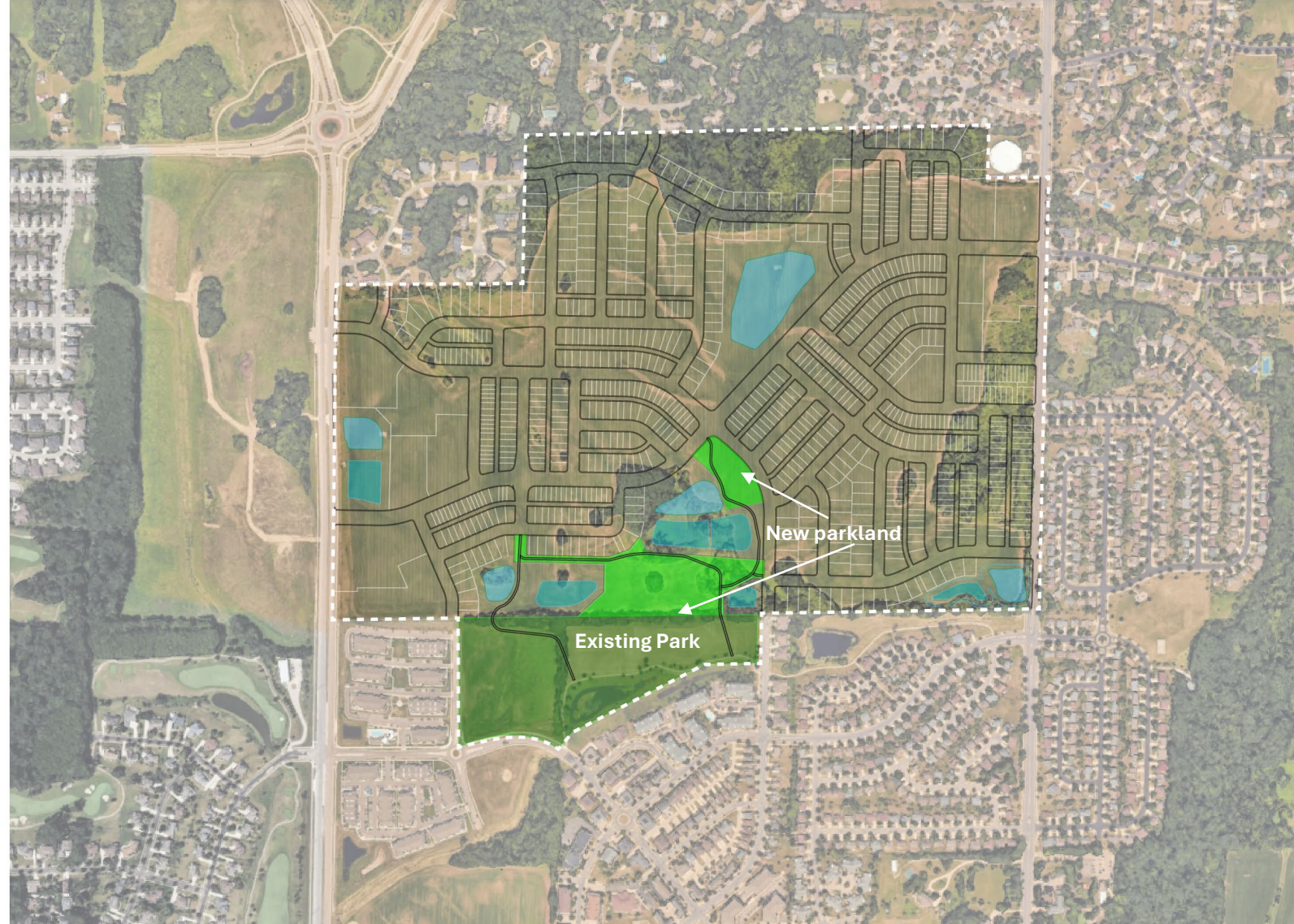


- The new development is aptly named “Hill Valley” for the significant Parkland will need to accommodate these changing conditions





- The Hill Valley development will introduce over 1,500 new housing units

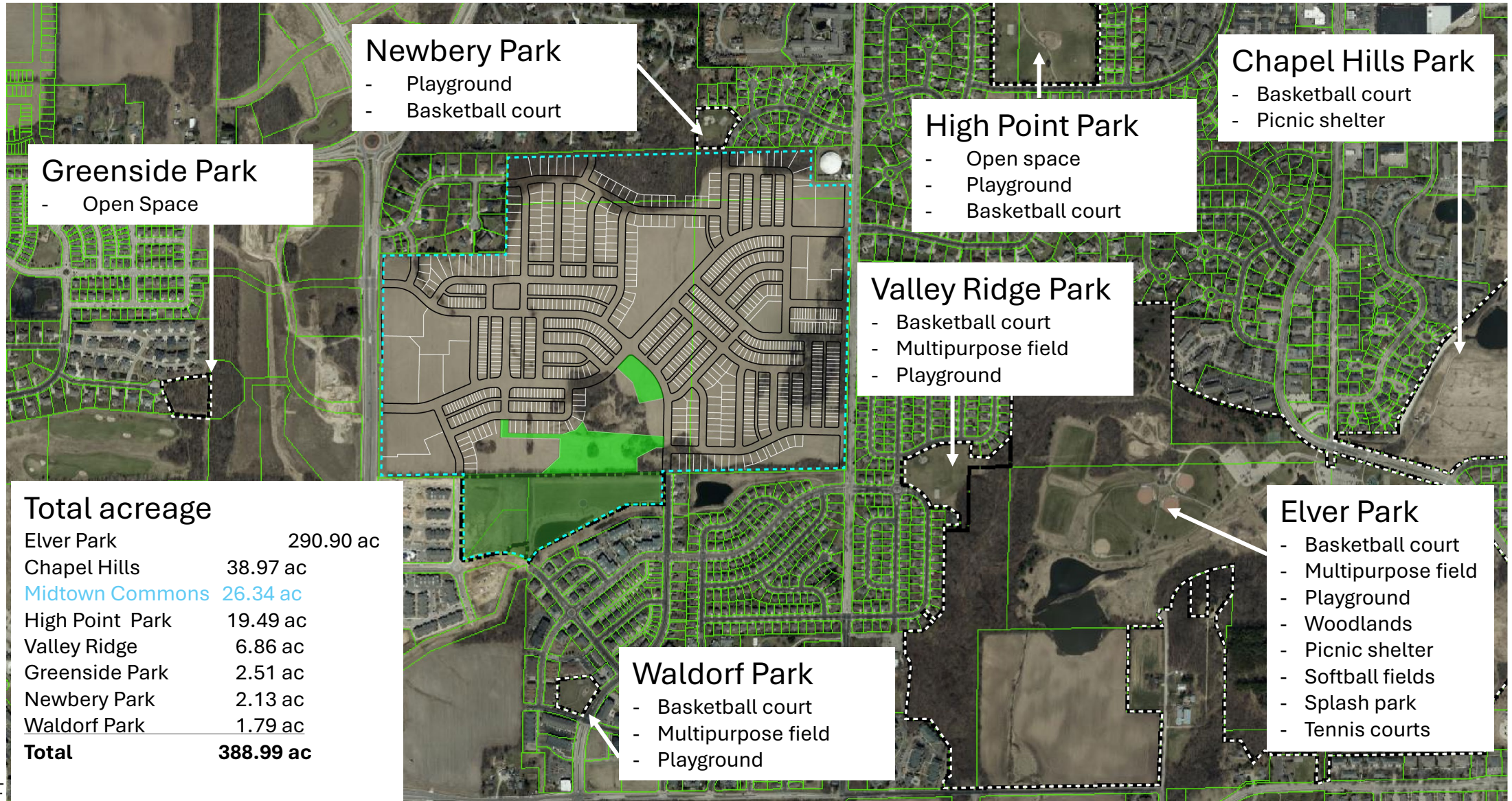




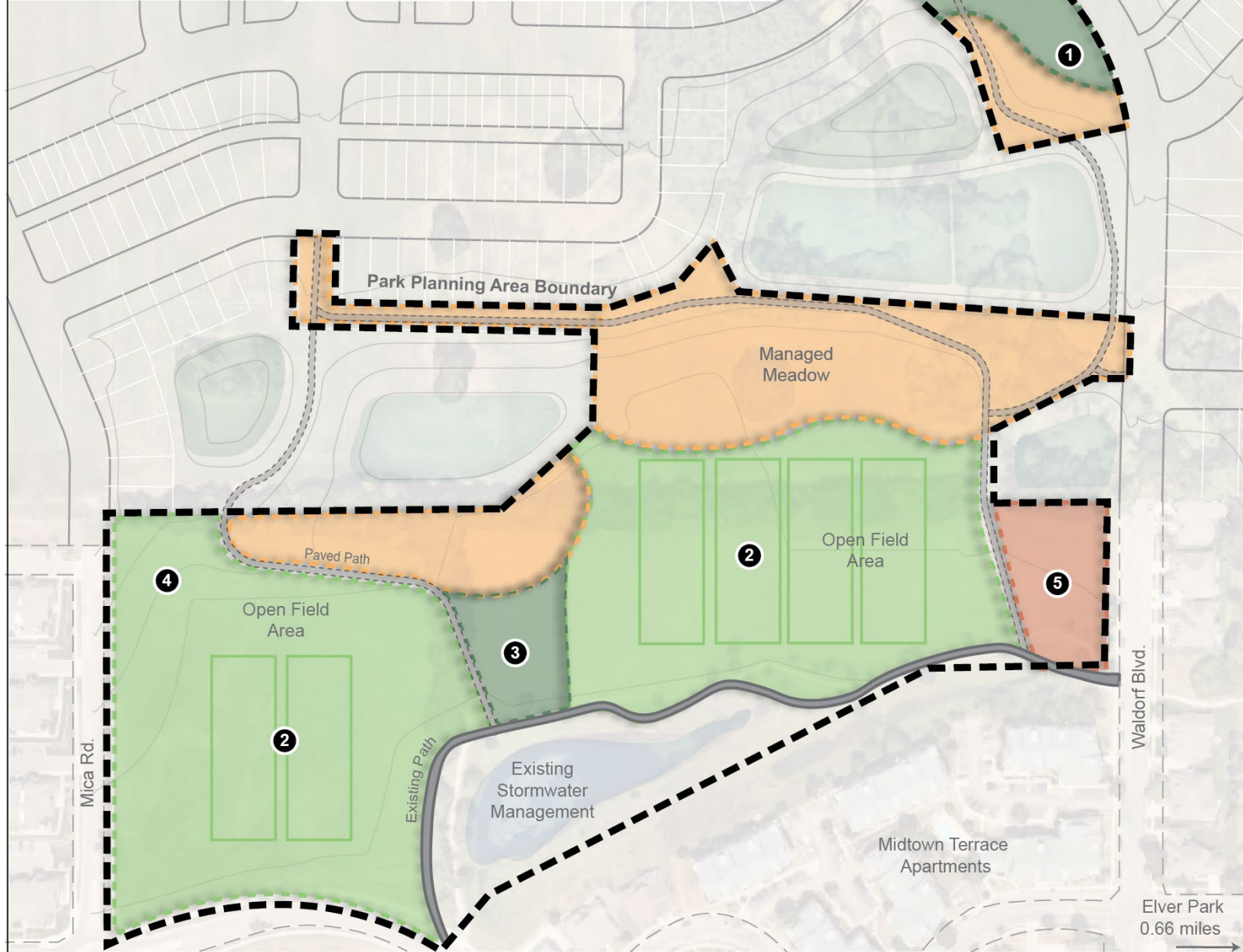
- The existing parkland abuts City of Madison Engineering Greenways



Surrounding Area Parks:



Previous Park Concepts...



- 1 Sun Shelter and Traditional Playground
- 2 Athletic Fields
- 3 Warm-up and Rec Space
- 4 Sledding Hill
- 5 Potential Community Garden

 Managed Meadow

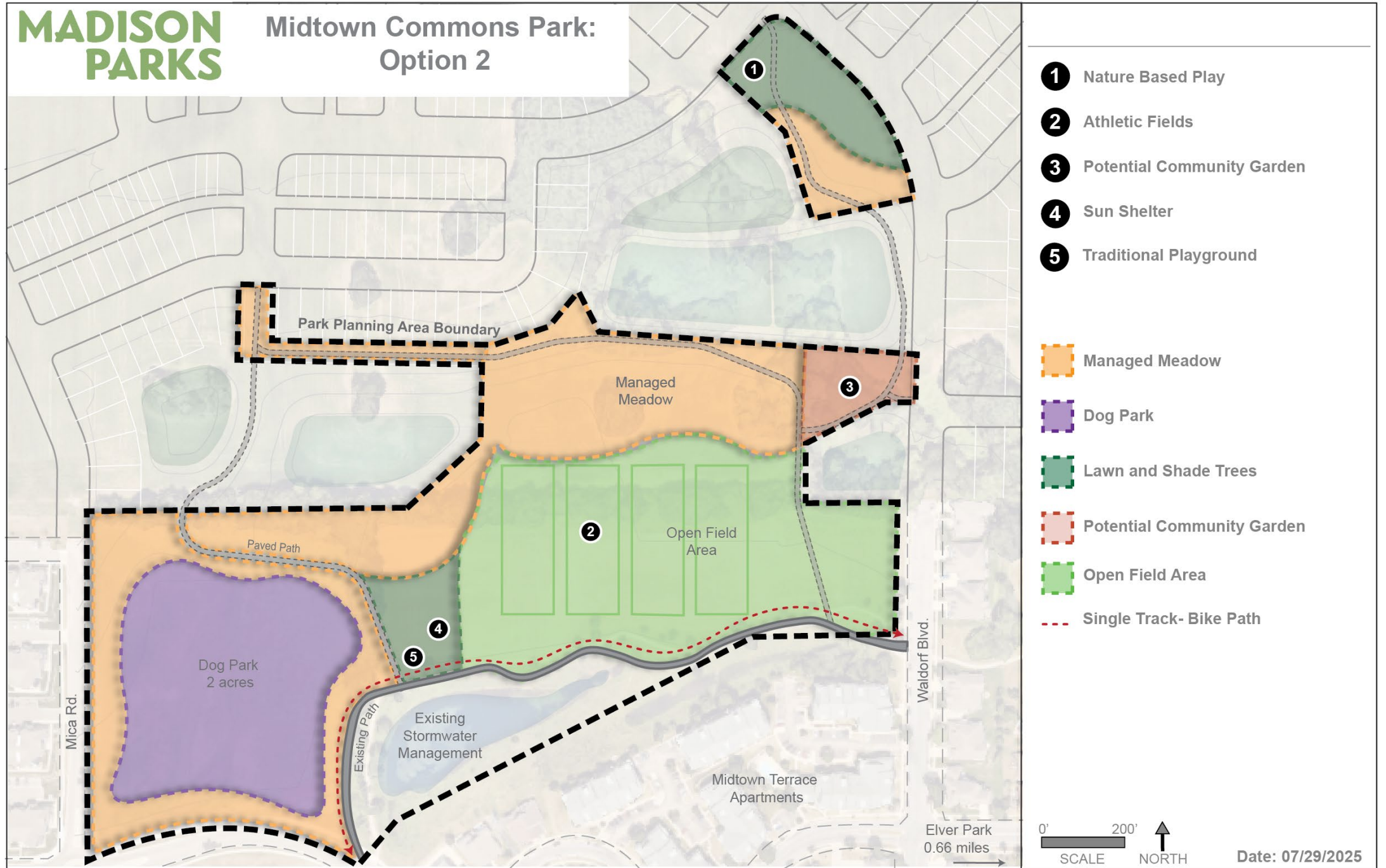
 Lawn and Shade Trees

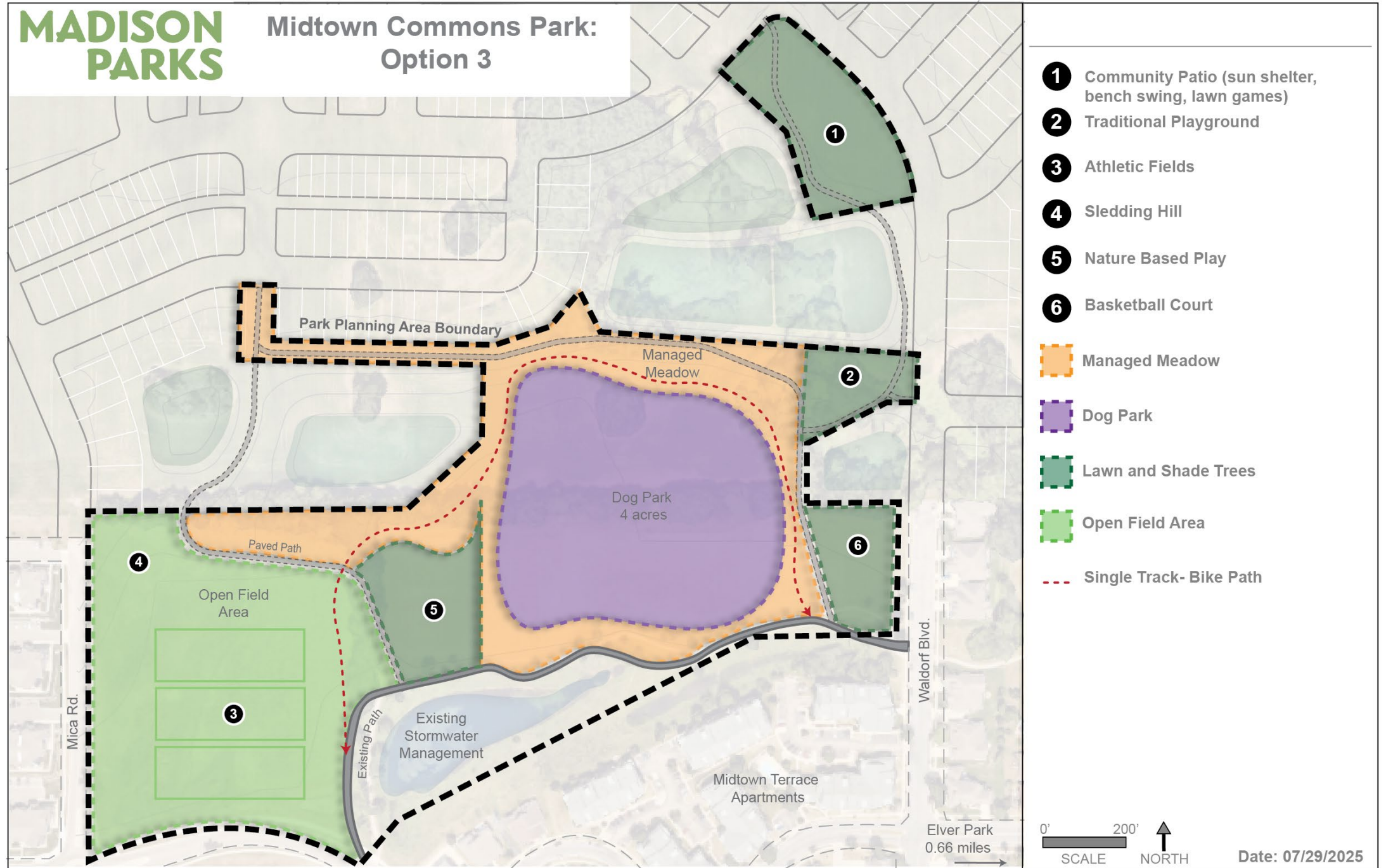
 Potential Community Garden

 Open Field Area

0' 200' 
SCALE NORTH

Date: 07/29/2025





High Priority:

- Athletic fields (43)
- Community gardens (31)
- Conservation and managed meadow (23)
- Dog park (21)
- Sledding hill (19)
- Community patio (18)

Priority:

- Playground near athletic fields (12)
- Single track (12)
- Nature play (12)
- Tree protection (11)

Lower Priority:

- Walking paths (5)
- Parking (4)
- Basketball (2)
- 4 acre dog park (1)

Revised Park Concept...



- 1 Nature Based Play and Community Patio
- 2 Sledding Hill
- 3 Athletic Fields
- 4 Sun Shelter and Traditional Playground
- 5 Potential Community Garden with Fruiting Trees

 Managed Meadow

 Dog Park

 Lawn and Shade Trees

 Potential Community Garden

 Open Field Area

 Single Track- Bike Path

0' 200' 
SCALE NORTH





Waltham Park



Eagle Trace Park



Kennedy Park



Allied Park

Dog Park:



Sycamore Park






Growing Community. Together.



Nature Play:



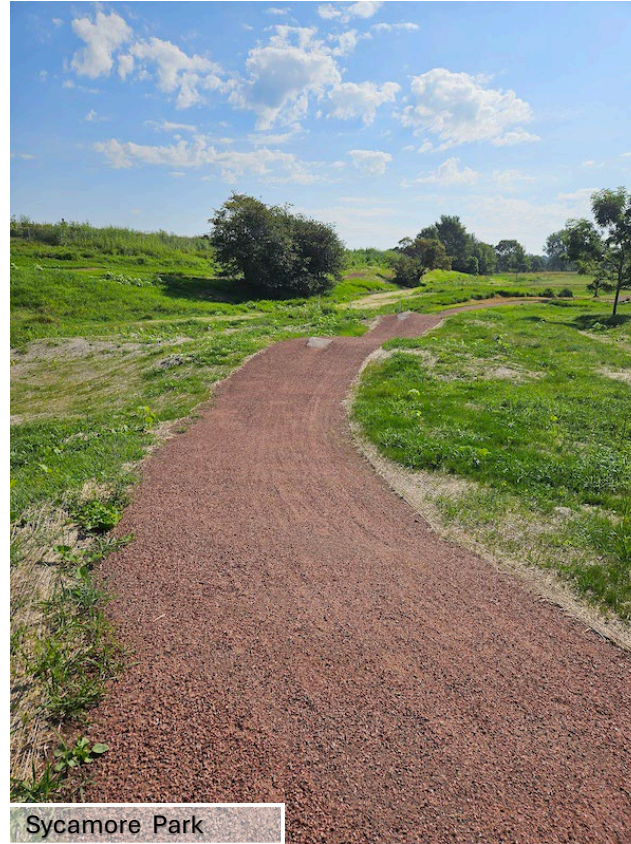
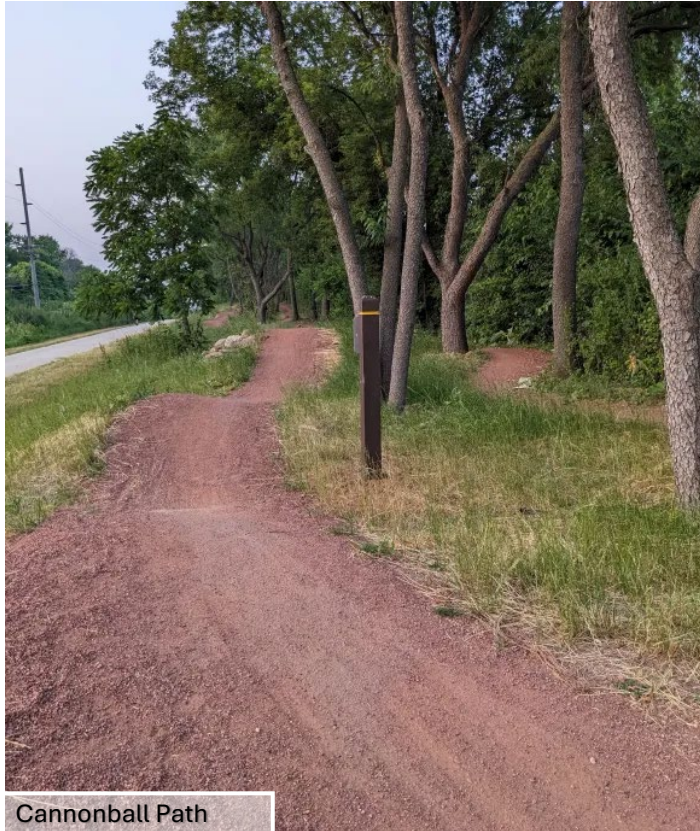
Olbrich Park



Brittingham Park



Single Track:



Community Patio:

**MADISON
PARKS**



Site Elevations:



RED - Future elevations
for stormwater
management and flood
mitigation ponds

Purple - Existing
elevations for fields and
old fence row

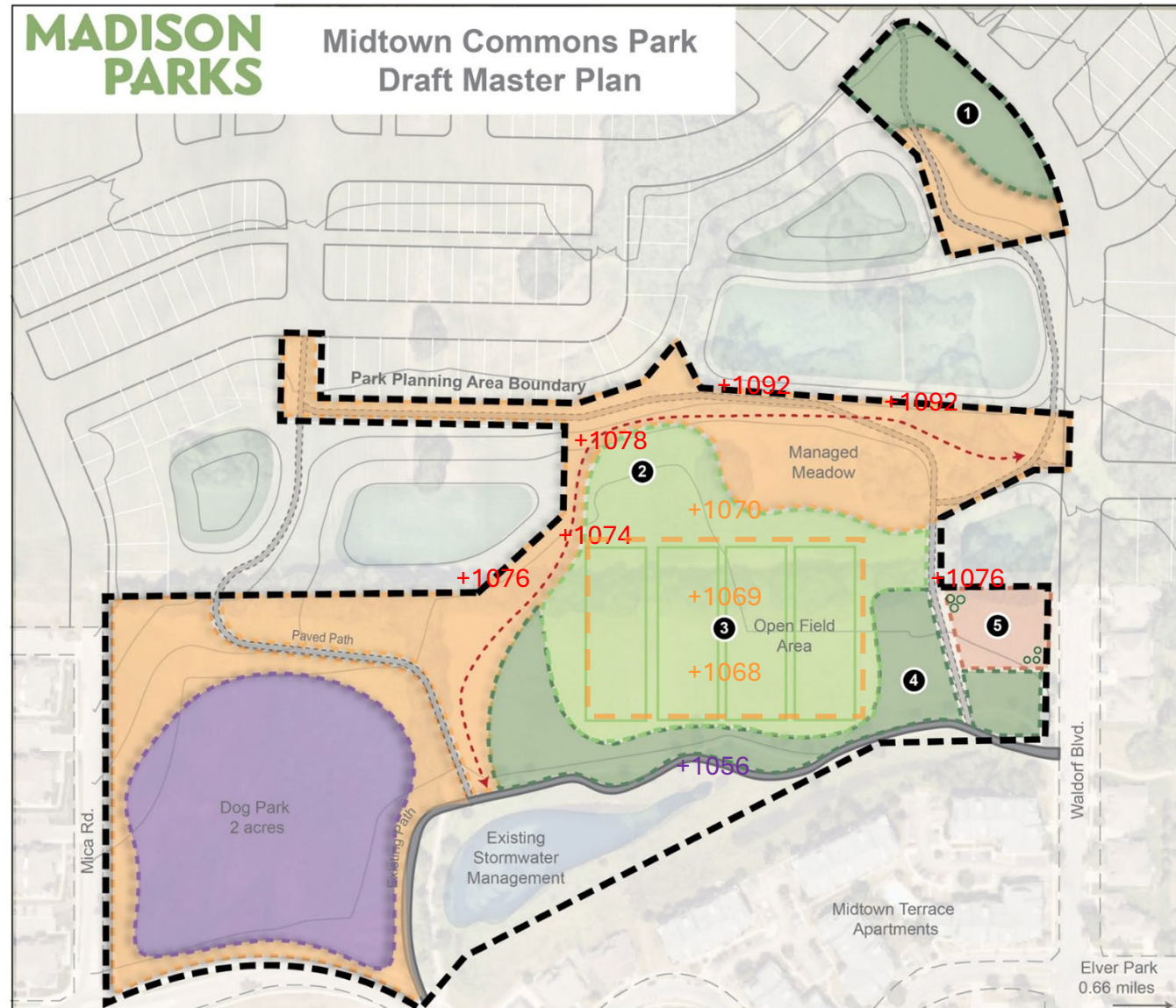
Site Elevations:



RED - Future elevations for stormwater management and flood mitigation ponds

Yellow - Proposed elevations for athletic fields and park access

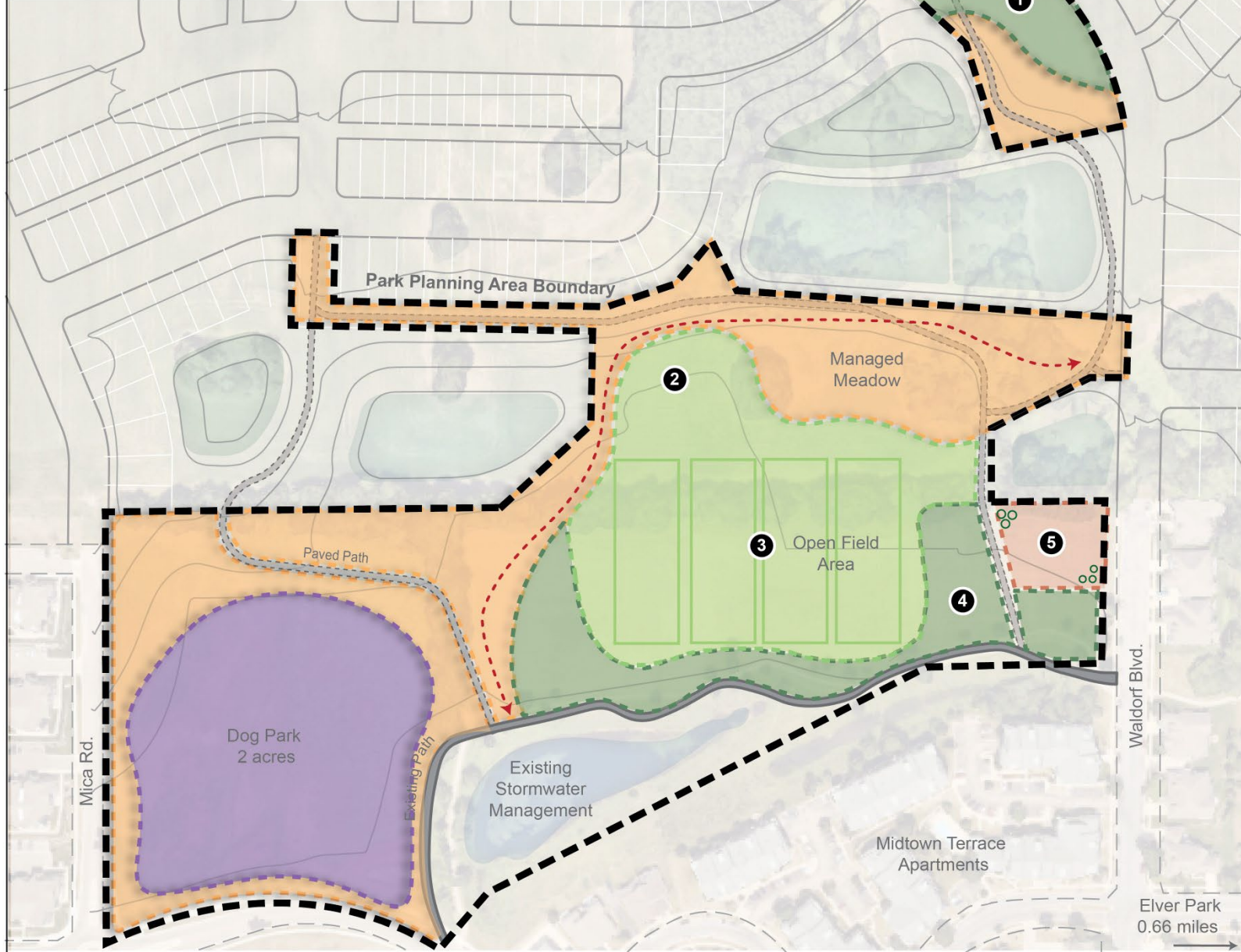
Purple - Existing elevations for fields and old fence row



RED - Future elevations for stormwater management and flood mitigation ponds

Yellow - Proposed elevations for athletic fields and park access

Purple - Existing elevations for fields and old fence row



- 1 Nature Based Play and Community Patio
- 2 Sledding Hill
- 3 Athletic Fields
- 4 Sun Shelter and Traditional Playground
- 5 Potential Community Garden with Fruiting Trees

- Managed Meadow
- Dog Park
- Lawn and Shade Trees
- Potential Community Garden
- Open Field Area
- Single Track- Bike Path

Public Input

- Please type your question or comment in the chat.



Next Steps

- Please take the survey! Open until **November 7, 2025**
 - [Survey link](#)
- Project Contact
 - Mike Sturm– msturm@cityofmadison.com
608-267-4921
- Visit the [project website](#) for updates

Thank you!