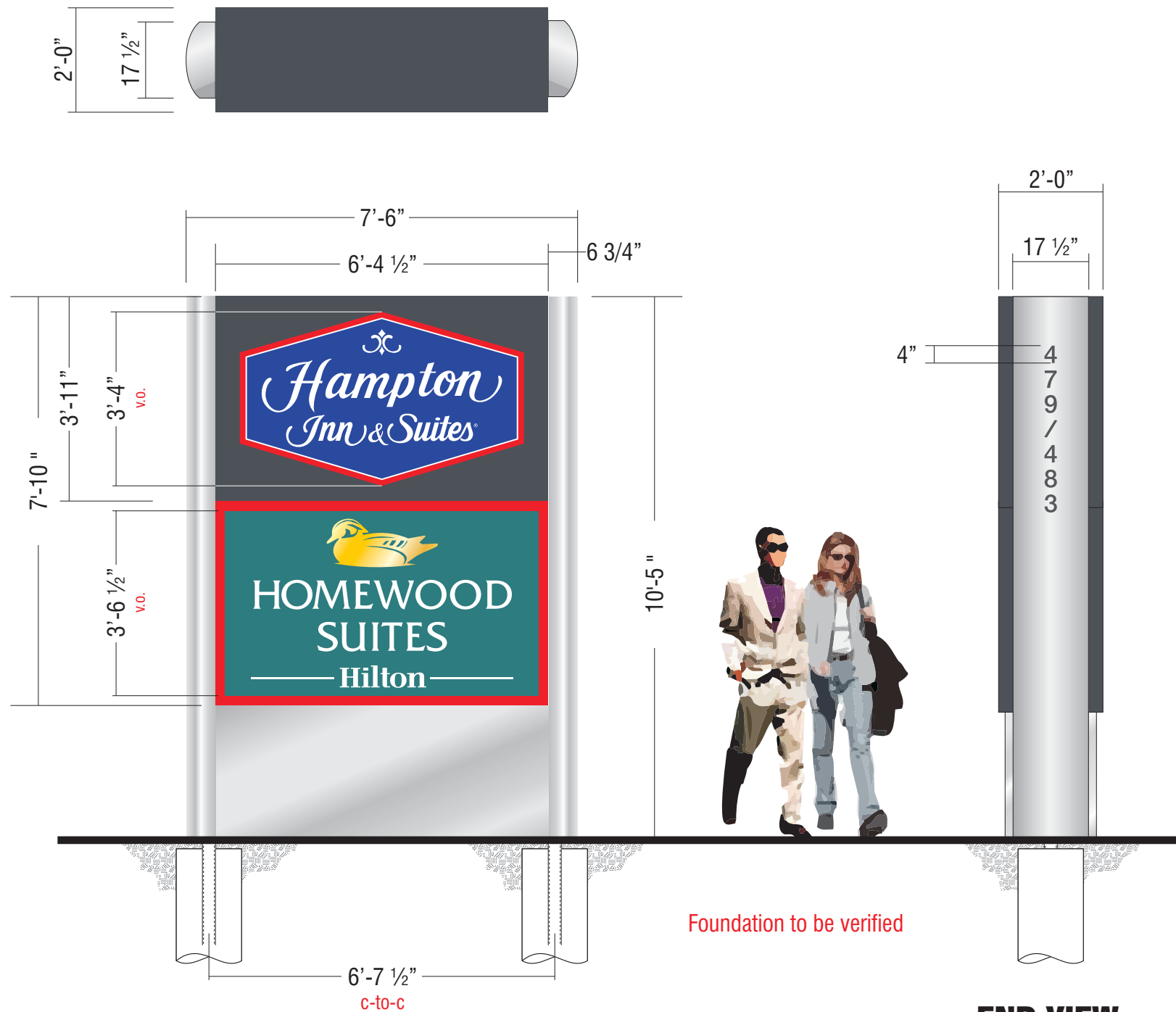




# CUSTOM D/F Illuminated Dual Tenant Monument Sign

## PLAN VIEW



Scale: 3/8" = 1'-0"

FABRICATED ALUMINUM SIGN CABINET WITH ROUTED OUT OPENINGS FOR LOGOS and BACKED WITH .125" THK. #7328 WHITE PLEX. HOMEWOOD SUITES FACE TO BE PAINTED MATTHEWS MP18315 TEAL GREEN SATIN FINISH AND HAMPTON INN & SUITES FACE TO BE PAINTED TO MATCH PMS 425c GREY SATIN FINISH. ALL FILLER PRIMED AND PAINTED TO MATCH PMS 425c GREY SATIN FINISH - PAINT INTERIOR LIGHT ENHANCING WHITE

REFER TO DRAWING #B57024A for FACE LAYOUT AND COLOR DESCRIPTIONS

ADDRESS TO BE 3M #7725-10 DK. GRAY OPAQUE VINYL APPLIED TO SIDE NEAREST TO STREET ONLY

ALUMINUM BASE PANELS (RECESSED) AND CONVEX SHAPED COVERS WITH CAPS ON END FILLERS OF SIGN - PAINT AKZO 354C2 SILVER METALLIC / GLOSS FINISH

SIGNS INTERNALLY ILLUMINATED WITH 800mA HI-OUTPUT DAYLIGHT FLUORESCENT LAMPS

UNDERGROUND ELECTRICAL SERVICE PROVIDED TO SIGN BY CUSTOMER'S ELECTRICAL CONTRACTOR - COORDINATE WITH SIGN MANUFACTURER AS TO PRIMARY VOLTAGE REQUIREMENTS. SIGN CONTRACTOR TO MAKE FINAL CONNECTION AS DETERMINED BY LOCAL SIGN ORDINANCES.

TS 3" x 3" x .25" STEEL TUBE SUPPORTS with 15" DIA. x 5'-0" DEEP CONCRETE PIER FOUNDATION. FOUNDATION SET 2" BELOW GRADE.

STEEL SIGN SUPPORTS MOUNTED IN CONCRETE PIER TYPE FOUNDATIONS - SIZE & DEPTH SHOWN TO BE CONFIRMED BY LOCAL CODES & CONDITIONS.

SUPPORTS DESIGNED FOR 30PSF WINDLOAD.

**REFERENCE DRAWINGS  
#HGI M50 FOR TYPICAL  
fabrication & color details**



THIS IS AN ORIGINAL UNPUBLISHED DRAWING SUBMITTED FOR USE IN CONNECTION WITH A PROJECT BEING PLANNED FOR YOU BY KIEFFER & CO., INC. IT IS NOT TO BE REPRODUCED, COPIED OR EXHIBITED IN ANY FASHION WITHOUT THE WRITTEN PERMISSION OF KIEFFER & CO., INC.

© 2008 KIEFFER & CO., INC.

585 Bond Street - Lincolnshire, IL 60069  
PHONE: (847) 520-1255 FAX: (847) 520-1543  
[www.kieffersigns.com](http://www.kieffersigns.com)

CUSTOMER: Hampton Inn & Suites  
LOCATION: Madison, WI  
SALESMAN: Mike Mele  
DESIGNER: TvS  
DATE: 11/07/08

Artwork  
 Design  
 Survey  
All boxes checked to Enter Order



COMPANION FILES

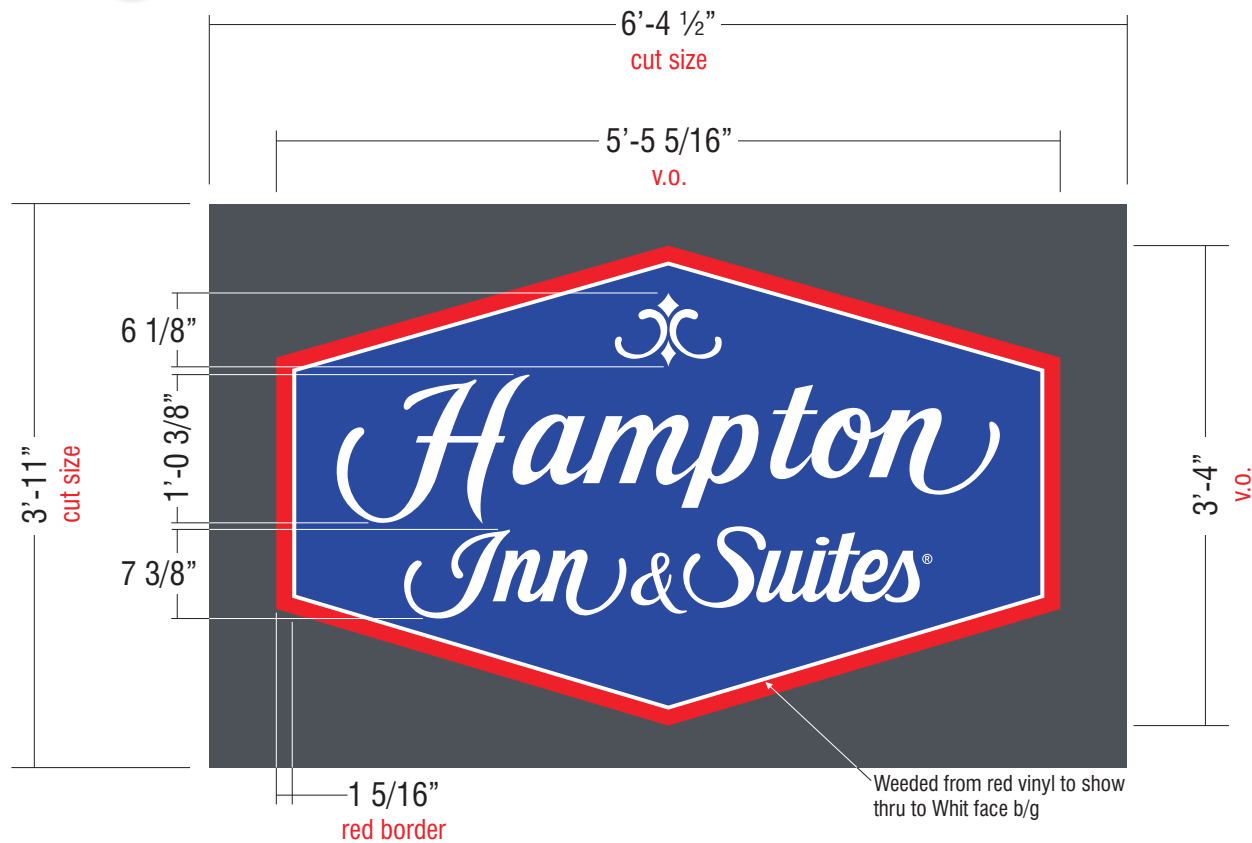
### PRODUCTION PROCESSING

Kieffer Item # \_\_\_\_\_  
Job # \_\_\_\_\_  
-001 \_\_\_\_\_  
-002 \_\_\_\_\_  
-003 \_\_\_\_\_  
-004 \_\_\_\_\_

REVISION:	INITIALS:	DATE:
A	TVS	12/04/08
B	TVS	12/17/08
C	TVS	01/05/09
D	TVS	01/16/09
E		
F		
G		
H		
I		
J		

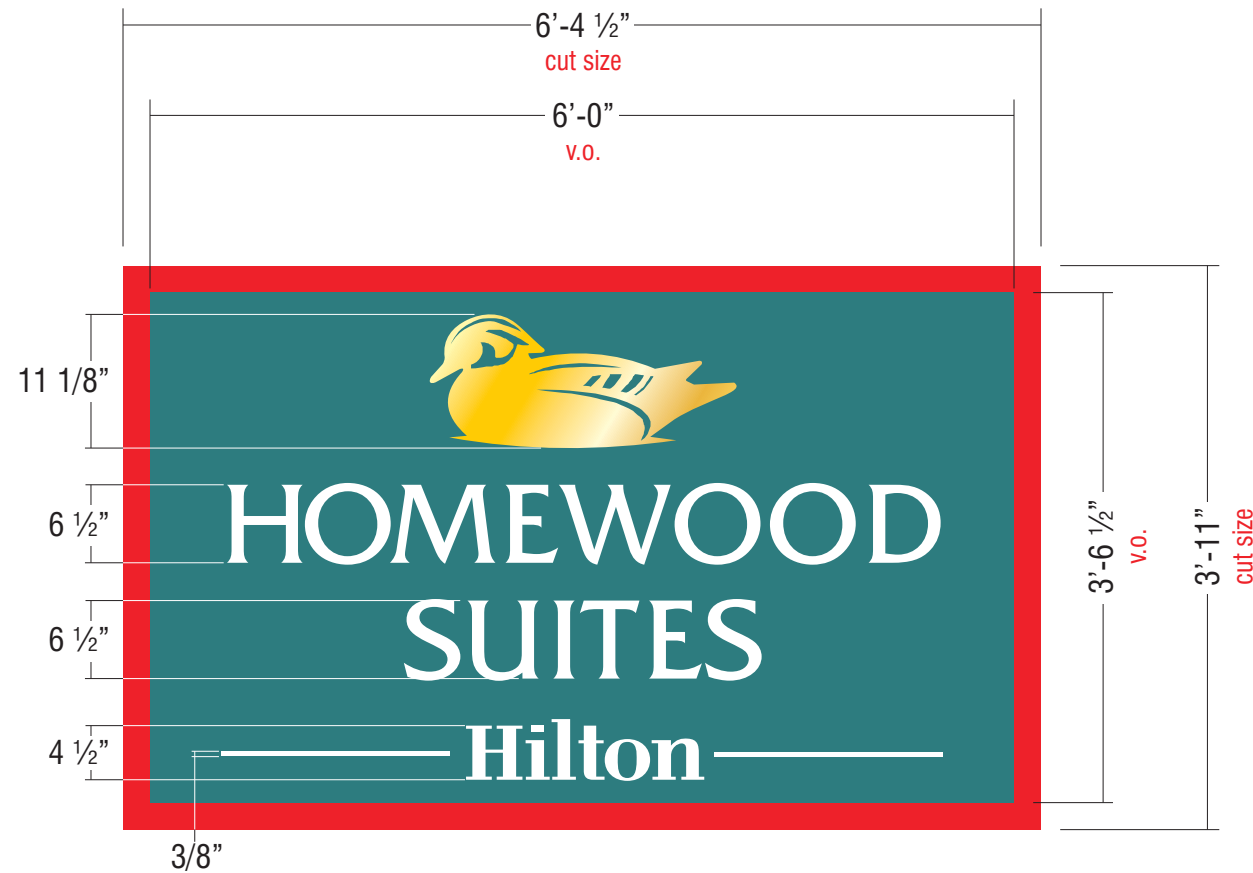
**B57024**

MADISON, WI



**COLOR SPECIFICATIONS**

- (V1)  3M VTB 12674 Opaque Blue
- (V2)  3M #3630-1726 Red
- (P1)  To Match PMS 425 Grey
- Copy weeded from Teal vinyl to show thru to White face



**COLOR SPECIFICATIONS**

- (V1)  3M #3630-6949 Teal Green
- (V2)  3M #3630-131 Metallic Gold
- (P1)  To Match PMS Warm Red
- Copy weeded from Teal vinyl to show thru to White face



THIS IS AN ORIGINAL UNPUBLISHED DRAWING SUBMITTED FOR USE IN CONNECTION WITH A PROJECT BEING PLANNED FOR YOU BY KIEFFER & CO., INC. IT IS NOT TO BE REPRODUCED, COPIED OR EXHIBITED IN ANY FASHION WITHOUT THE WRITTEN PERMISSION OF KIEFFER & CO., INC.

© 2008 KIEFFER & CO., INC.

585 Bond Street - Lincolnshire, IL 60069  
 PHONE: (847) 520-1255 FAX: (847) 520-1543  
[www.kieffersigns.com](http://www.kieffersigns.com)

CUSTOMER: Hampton Inn & Suites  
 LOCATION: Madison, WI  
 SALESMAN: Mike Mele  
 DESIGNER: TvS  
 DATE: 11/07/08

Artwork  
 Design  
 Survey  
 All boxes checked to Enter Order



COMPANION FILES

PRODUCTION PROCESSING

Kieffer Item # \_\_\_\_\_  
 Job # \_\_\_\_\_  
 -001 \_\_\_\_\_  
 -002 \_\_\_\_\_  
 -003 \_\_\_\_\_  
 -004 \_\_\_\_\_

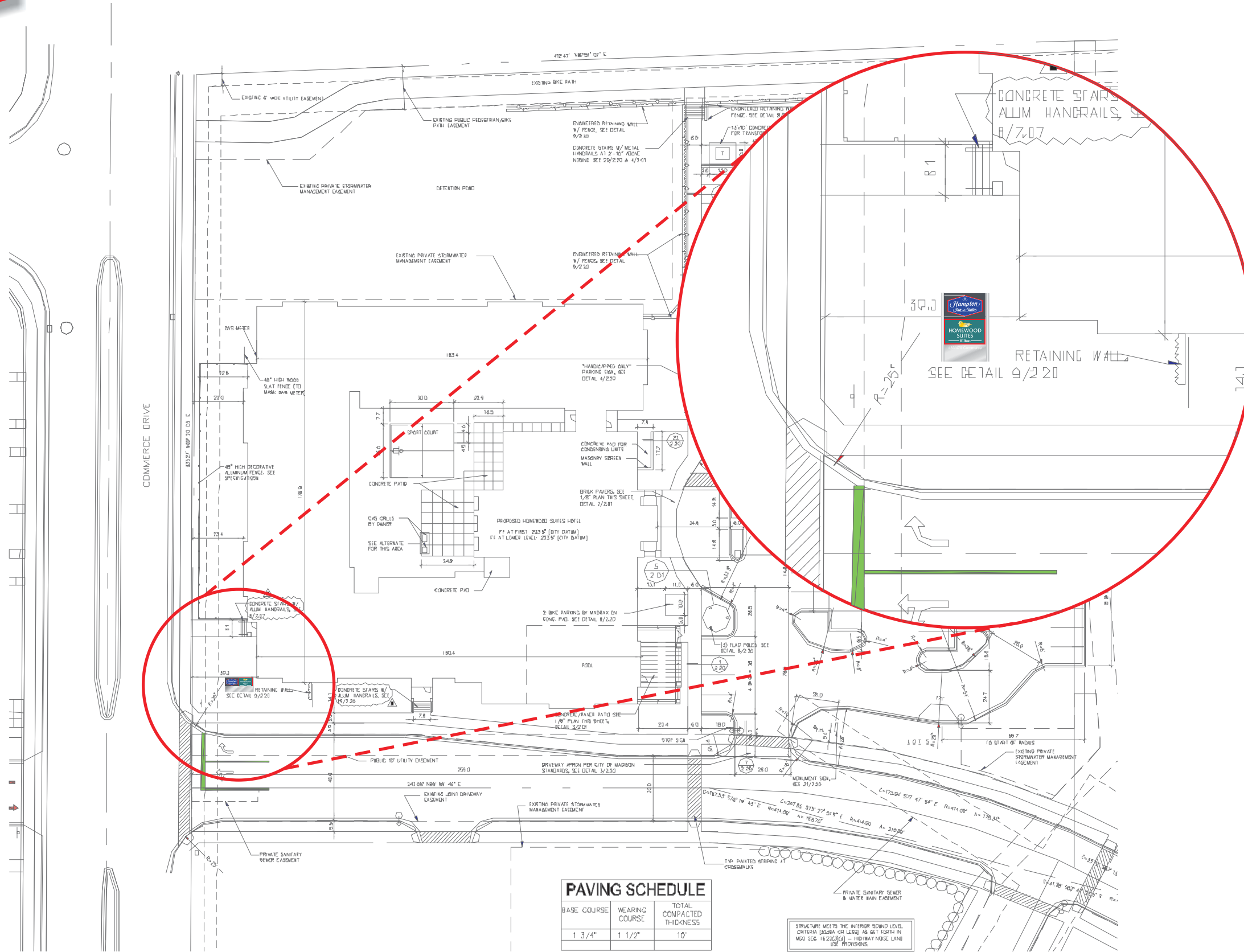
INITIALS: DATE: 12/04/08  
 TVS

REVISION:	DATE:	INITIALS:
A	revision to colors and layouts	
B		
C		
D		
E		
F		
G		
H		
I		
J		

**B57024A**



# SITE PLAN



MADISON, WI



THIS IS AN ORIGINAL UNPUBLISHED DRAWING SUBMITTED FOR USE IN CONNECTION WITH A PROJECT BEING PLANNED FOR YOU BY KIEFFER & CO., INC. IT IS NOT TO BE REPRODUCED, COPIED OR EXHIBITED IN ANY FASHION WITHOUT THE WRITTEN PERMISSION OF KIEFFER & CO., INC.

© 2008 KIEFFER & CO., INC.

585 Bond Street - Lincolnshire, IL 60069  
 PHONE: (847) 520-1255 FAX: (847) 520-1543  
[www.kieffersigns.com](http://www.kieffersigns.com)

CUSTOMER: Hampton Inn & Suites  
 LOCATION: Madison, WI  
 SALESMAN: Mike Mele  
 DESIGNER: TvS  
 DATE: 11/07/08

Artwork  
 Design  
 Survey  
 All boxes checked to Enter Order



COMPANION FILES

PRODUCTION PROCESSING

Kieffer Item # \_\_\_\_\_

Job # \_\_\_\_\_

-001 \_\_\_\_\_

-002 \_\_\_\_\_

-003 \_\_\_\_\_

-004 \_\_\_\_\_

INITIALS: DATE:

--	--	--	--	--	--	--	--	--	--	--

REVISION:

A	B	C	D	E	F	G	H	I	J
---	---	---	---	---	---	---	---	---	---

**B57024B**



KRAEMER  
WROTHENS



HOMEWOOD  
SUITES

— Hilton —

*Hampton  
Inn & Suites*



HOMEWOOD

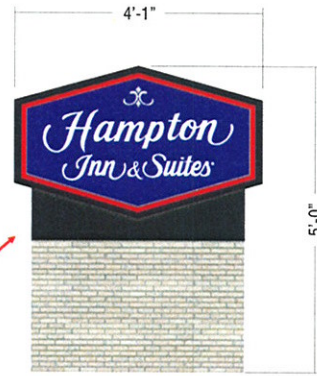
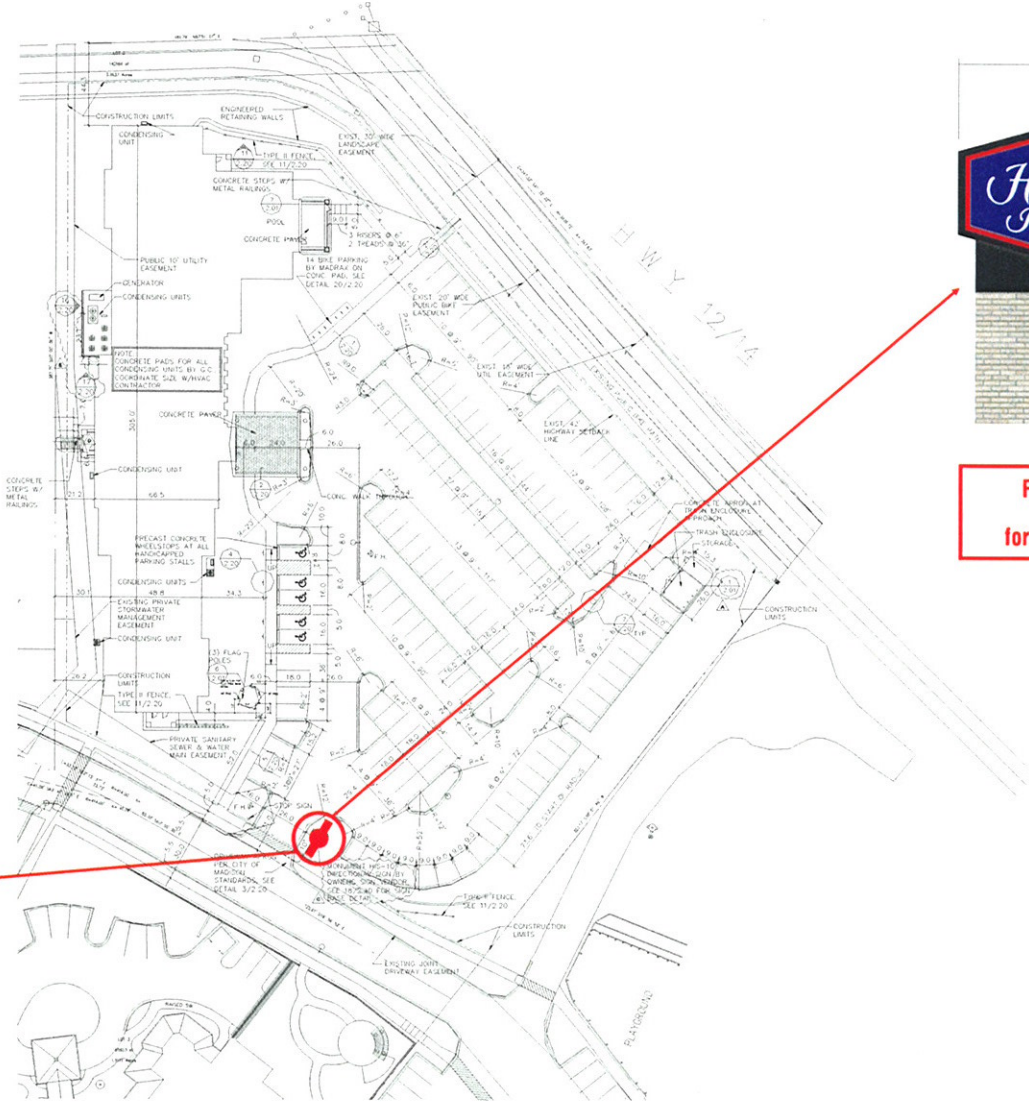
SUITES

Hilton





**HIS 10-D Directional Sign**



**REFERENCE DRAWING #B56173D for dimensions and details**

10'-0" from property line  
8'-0" from driveway

SITE PLAN

MADISON, WI



THIS IS AN ORIGINAL APPROVED DRAWING SUBMITTED FOR USE IN CONNECTION WITH A PROJECT BEING PLANNED FOR THE CITY OF MADISON, WI. IT IS NOT TO BE REPRODUCED, COPIED OR EXHIBITED IN ANY MANNER WITHOUT THE WRITTEN PERMISSION OF KIEFFER & CO., INC.

© 2007 KIEFFER & CO., INC.  
585 Bond Street - Lincolnshire, IL 60069  
PHONE: (847) 520-1255 FAX: (847) 520-1543  
[www.kieffersigns.com](http://www.kieffersigns.com)

CUSTOMER: Hampton Inn & Suites  
LOCATION: Madison, WI  
SALESMAN: Mike Mele  
DESIGNER: Tvs  
DATE: 03/28/08

Artwork  
 Design  
 Survey  
All boxes checked to Enter Order

**UL LISTED**  
COMPANION FILES

PRODUCTION PROCESSING

Kieffer Item # \_\_\_\_\_  
Job # \_\_\_\_\_  
-001 \_\_\_\_\_  
-002 \_\_\_\_\_  
-003 \_\_\_\_\_  
-004 \_\_\_\_\_

INITIALS: DATE:

Tvs	04/04/08
Tvs	05/07/08

REVISION:

A	To brick base
B	distance from prop. line & driveway added
C	
D	
E	
F	
G	
H	
I	
J	
K	
L	
M	
N	
O	
P	
Q	
R	
S	
T	
U	
V	
W	
X	
Y	
Z	

**B56173C**



HOMEWOOD  
SUITES

Hilton





January 8, 2009

Urban Design Commission  
215 Martin Luther King Jr. Blvd., Rm. LL100  
Madison, WI 53703

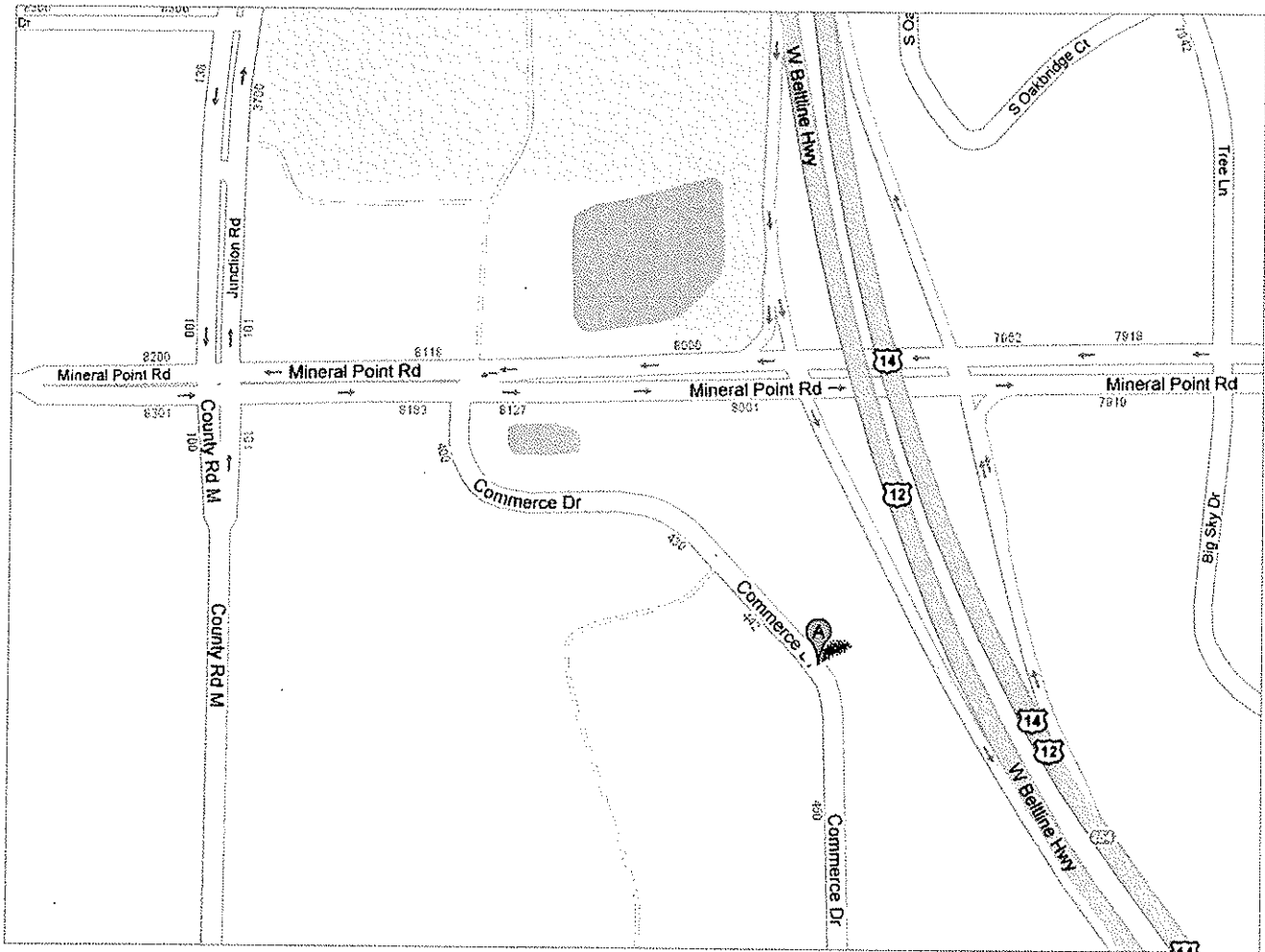
To Whom It May Concern:

The North Central Group, who is the developer of the Hampton Inn & Suites and Homewood Suites located at 483 Commerce Drive and 479 Commerce Drive has contacted Kieffer & Co., Inc. about the proposal to install a ground sign incorporating both hotels on one monument sign shown in attached drawings B57024, B57024A and B57024B. The North Central Group would like to propose this new monument sign on the parcel of 479 Commerce Drive located in front of the Homewood Suites shown on Kieffer drawing B57024B. It is our request for the Urban Design Commission to review our proposed monument which will include graphics of a PUD property portion devoted to another parcel that is ground connected. The hotel would like to provide signage on Commerce Drive incorporating both hotels indicating where to turn to access the hotels. As of right now the hotels do not have any directional or monument signs showing where to turn off of Commerce Drive. The property includes one (1) existing ground sign for each hotel which are shown on drawings B56172F and B56173C. The code reads that each property may have two (2) ground signs.

Sincerely,

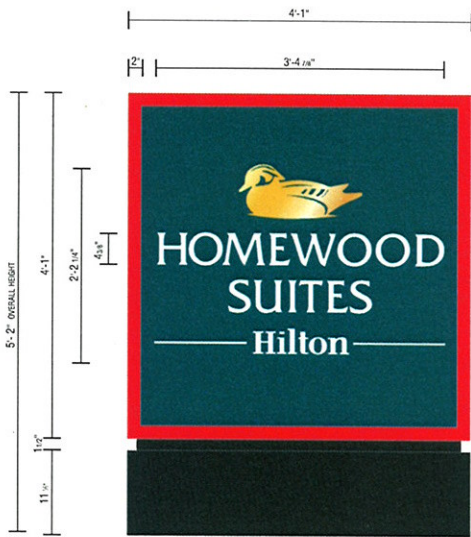
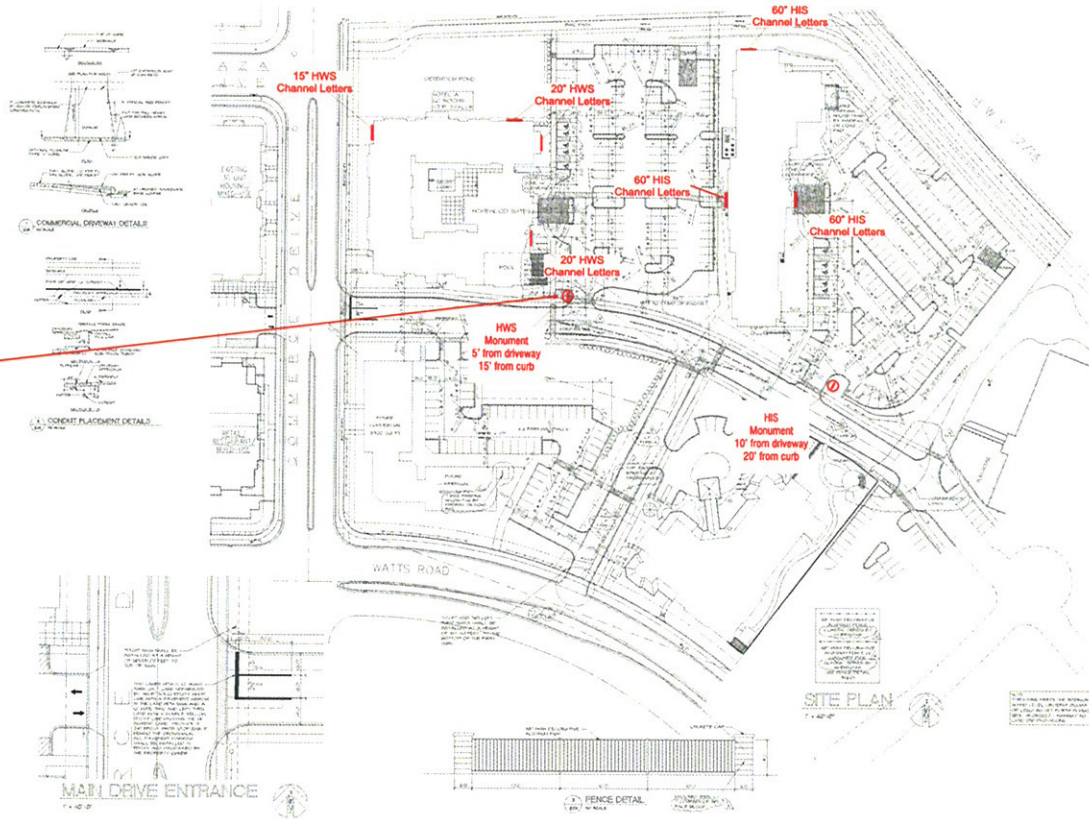
Patrick Havel  
Kieffer & Co., Inc.

Google™ Address  
Maps





**15"** Internally Illuminated REMOTE Channel Letter Set



2007 LOGO

SITE PLAN  
Location: Madison, WI



THIS IS AN ORIGINAL REPRODUCED DRAWING SUBMITTED FOR USE IN CONNECTION WITH A PROJECT BEING PLANNED FOR THE BY KIEFFER & CO., INC. IT IS NOT TO BE REPRODUCED, COPIED OR CREDITED IN ANY MANNER WITHOUT THE WRITTEN PERMISSION OF KIEFFER & CO., INC.

© 2007 KIEFFER & CO., INC.  
585 Bond Street - Lincolnshire, IL 60069  
PHONE: (847) 520-1255 FAX: (847) 520-1543  
[www.kieffersigns.com](http://www.kieffersigns.com)

CUSTOMER: HILTON Homewood Suites  
LOCATION: Madison, WI  
SALESMAN: Mike Mele  
DESIGNER: TvS  
DATE: 03/24/08

- Artwork
  - Design
  - Survey
- All boxes checked to Enter Order



COMPANION FILES

PRODUCTION PROCESSING  
Kieffer Item # \_\_\_\_\_  
Job # \_\_\_\_\_  
-001 \_\_\_\_\_  
-002 \_\_\_\_\_  
-003 \_\_\_\_\_  
-004 \_\_\_\_\_

INITIALS: DATE:

REVISION:  
A  
B  
C  
D  
E  
F  
G  
H  
I  
J  
K  
L  
M  
N  
O  
P  
Q  
R  
S  
T  
U  
V  
W  
X  
Y  
Z  
AA  
AB  
AC  
AD  
AE  
AF  
AG  
AH  
AI  
AJ  
AK  
AL  
AM  
AN  
AO  
AP  
AQ  
AR  
AS  
AT  
AU  
AV  
AW  
AX  
AY  
AZ  
BA  
BB  
BC  
BD  
BE  
BF  
BG  
BH  
BI  
BJ  
BK  
BL  
BM  
BN  
BO  
BP  
BQ  
BR  
BS  
BT  
BU  
BV  
BW  
BX  
BY  
BZ  
CA  
CB  
CC  
CD  
CE  
CF  
CG  
CH  
CI  
CJ  
CK  
CL  
CM  
CN  
CO  
CP  
CQ  
CR  
CS  
CT  
CU  
CV  
CW  
CX  
CY  
CZ  
DA  
DB  
DC  
DD  
DE  
DF  
DG  
DH  
DI  
DJ  
DK  
DL  
DM  
DN  
DO  
DP  
DQ  
DR  
DS  
DT  
DU  
DV  
DW  
DX  
DY  
DZ  
EA  
EB  
EC  
ED  
EE  
EF  
EG  
EH  
EI  
EJ  
EK  
EL  
EM  
EN  
EO  
EP  
EQ  
ER  
ES  
ET  
EU  
EV  
EW  
EX  
EY  
EZ  
FA  
FB  
FC  
FD  
FE  
FF  
FG  
FH  
FI  
FJ  
FK  
FL  
FM  
FN  
FO  
FP  
FQ  
FR  
FS  
FT  
FU  
FV  
FW  
FX  
FY  
FZ  
GA  
GB  
GC  
GD  
GE  
GF  
GG  
GH  
GI  
GJ  
GK  
GL  
GM  
GN  
GO  
GP  
GQ  
GR  
GS  
GT  
GU  
GV  
GW  
GX  
GY  
GZ  
HA  
HB  
HC  
HD  
HE  
HF  
HG  
HH  
HI  
HJ  
HK  
HL  
HM  
HN  
HO  
HP  
HQ  
HR  
HS  
HT  
HU  
HV  
HW  
HX  
HY  
HZ  
IA  
IB  
IC  
ID  
IE  
IF  
IG  
IH  
II  
IJ  
IK  
IL  
IM  
IN  
IO  
IP  
IQ  
IR  
IS  
IT  
IU  
IV  
IW  
IX  
IY  
IZ  
JA  
JB  
JC  
JD  
JE  
JF  
JG  
JH  
JI  
JJ  
JK  
JL  
JM  
JN  
JO  
JP  
JQ  
JR  
JS  
JT  
JU  
JV  
JW  
JX  
JY  
JZ  
KA  
KB  
KC  
KD  
KE  
KF  
KG  
KH  
KI  
KJ  
KK  
KL  
KM  
KN  
KO  
KP  
KQ  
KR  
KS  
KT  
KU  
KV  
KW  
KX  
KY  
KZ  
LA  
LB  
LC  
LD  
LE  
LF  
LG  
LH  
LI  
LJ  
LK  
LL  
LM  
LN  
LO  
LP  
LQ  
LR  
LS  
LT  
LU  
LV  
LW  
LX  
LY  
LZ  
MA  
MB  
MC  
MD  
ME  
MF  
MG  
MH  
MI  
MJ  
MK  
ML  
MM  
MN  
MO  
MP  
MQ  
MR  
MS  
MT  
MU  
MV  
MW  
MX  
MY  
MZ  
NA  
NB  
NC  
ND  
NE  
NF  
NG  
NH  
NI  
NJ  
NK  
NL  
NM  
NN  
NO  
NP  
NQ  
NR  
NS  
NT  
NU  
NV  
NW  
NX  
NY  
NZ  
OA  
OB  
OC  
OD  
OE  
OF  
OG  
OH  
OI  
OJ  
OK  
OL  
OM  
ON  
OO  
OP  
OQ  
OR  
OS  
OT  
OU  
OV  
OW  
OX  
OY  
OZ  
PA  
PB  
PC  
PD  
PE  
PF  
PG  
PH  
PI  
PJ  
PK  
PL  
PM  
PN  
PO  
PP  
PQ  
PR  
PS  
PT  
PU  
PV  
PW  
PX  
PY  
PZ  
QA  
QB  
QC  
QD  
QE  
QF  
QG  
QH  
QI  
QJ  
QK  
QL  
QM  
QN  
QO  
QP  
QQ  
QR  
QS  
QT  
QU  
QV  
QW  
QX  
QY  
QZ  
RA  
RB  
RC  
RD  
RE  
RF  
RG  
RH  
RI  
RJ  
RK  
RL  
RM  
RN  
RO  
RP  
RQ  
RR  
RS  
RT  
RU  
RV  
RW  
RX  
RY  
RZ  
SA  
SB  
SC  
SD  
SE  
SF  
SG  
SH  
SI  
SJ  
SK  
SL  
SM  
SN  
SO  
SP  
SQ  
SR  
SS  
ST  
SU  
SV  
SW  
SX  
SY  
SZ  
TA  
TB  
TC  
TD  
TE  
TF  
TG  
TH  
TI  
TJ  
TK  
TL  
TM  
TN  
TO  
TP  
TQ  
TR  
TS  
TT  
TU  
TV  
TW  
TX  
TY  
TZ  
UA  
UB  
UC  
UD  
UE  
UF  
UG  
UH  
UI  
UJ  
UK  
UL  
UM  
UN  
UO  
UP  
UQ  
UR  
US  
UT  
UU  
UV  
UW  
UX  
UY  
UZ  
VA  
VB  
VC  
VD  
VE  
VF  
VG  
VH  
VI  
VJ  
VK  
VL  
VM  
VN  
VO  
VP  
VQ  
VR  
VS  
VT  
VU  
VV  
VW  
VX  
VY  
VZ  
WA  
WB  
WC  
WD  
WE  
WF  
WG  
WH  
WI  
WJ  
WK  
WL  
WM  
WN  
WO  
WP  
WQ  
WR  
WS  
WT  
WU  
WV  
WW  
WX  
WY  
WZ  
XA  
XB  
XC  
XD  
XE  
XF  
XG  
XH  
XI  
XJ  
XK  
XL  
XM  
XN  
XO  
XP  
XQ  
XR  
XS  
XT  
XU  
XV  
XW  
XX  
XY  
XZ  
YA  
YB  
YC  
YD  
YE  
YF  
YG  
YH  
YI  
YJ  
YK  
YL  
YM  
YN  
YO  
YP  
YQ  
YR  
YS  
YT  
YU  
YV  
YW  
YX  
YY  
YZ  
ZA  
ZB  
ZC  
ZD  
ZE  
ZF  
ZG  
ZH  
ZI  
ZJ  
ZK  
ZL  
ZM  
ZN  
ZO  
ZP  
ZQ  
ZR  
ZS  
ZT  
ZU  
ZV  
ZW  
ZX  
ZY  
ZZ

**B56172F**

*Hampton  
Inn & Suites*

