



Madison Water Utility
 119 E. OLIN AVE.
 MADISON, WI 53713

CITY OF MADISON

MADISON WATER UTILITY

PUBLIC WORKS PLAN OF

PROPOSED IMPROVEMENT

FELLAND ROAD HYDRAULIC IMPROVEMENTS

PUBLIC IMPROVEMENT PROJECT
 APPROVED

APPROVED DATE

BY THE COMMON COUNCIL
 OF MADISON, WISCONSIN

PUBLIC IMPROVEMENT DESIGN
 APPROVED BY:

Principal Engineer _____ Date _____
 Madison Water Utility

WATER
 DESIGNED BY:

INDEX OF SHEETS

| | | |
|-----------|--------------|---------------------------------------|
| SHEET NO. | T-1 | TITLE SHEET |
| SHEET NO. | EC-1 | EROSION CONTROL PLAN |
| SHEET NO. | W-1 - W-7 | WATER PLAN & PROFILE |
| SHEET NO. | W-8 TO W-10 | WATER IMPACT PLAN |
| SHEET NO. | W-11 TO W-13 | WATER DETAILS & ESTIMATE OF MATERIALS |
| SHEET NO. | TC-1 | TRAFFIC CONTROL PLAN |

CITY PROJECT NO. 12327
 CONTRACT NO. #####

PROJECT
 LOCATION



PRELIMINARY

PLOT SCALE: 1" = 1'

PLOT NAME: ---

REV. DATE: 3/4/2020 3:05 PM

ORIGINATOR: CITY_OF_MADISON



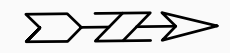
RELOCATE HYDRANT TO STA. 11+35

WN 5

FIBER OPTIC MARKER

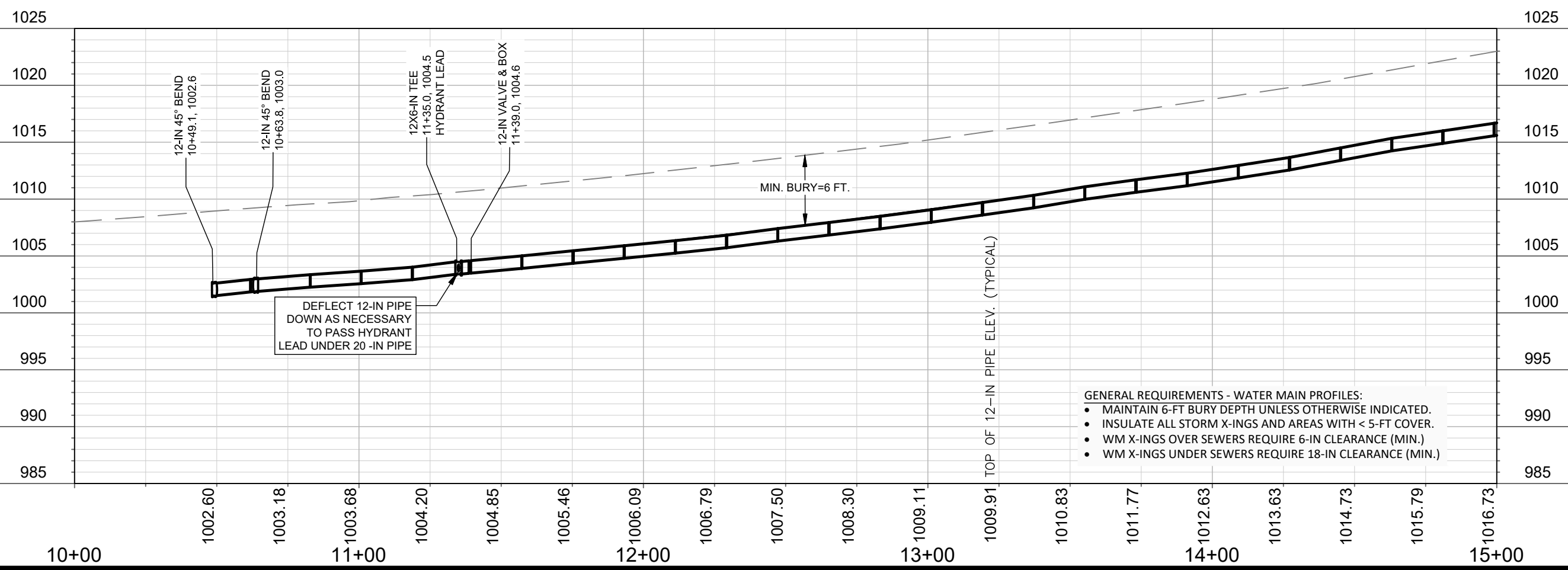
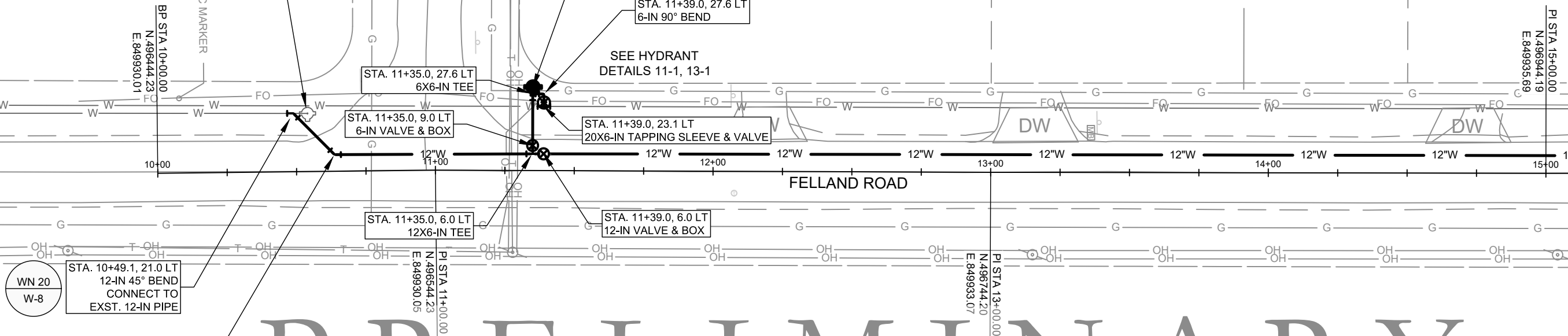
BRIDLE WAY

FELLAND ROAD



MATCH LINE STA. 15+10

PRELIMINARY



- GENERAL REQUIREMENTS - WATER MAIN PROFILES:**
- MAINTAIN 6-FT BURY DEPTH UNLESS OTHERWISE INDICATED.
 - INSULATE ALL STORM X-INGS AND AREAS WITH < 5-FT COVER.
 - WM X-INGS OVER SEWERS REQUIRE 6-IN CLEARANCE (MIN.)
 - WM X-INGS UNDER SEWERS REQUIRE 18-IN CLEARANCE (MIN.)

SCALE: 1" = 40'
 DESIGNED BY: DAR/KBM
 MADISON WATER UTILITY
 119 E OLIN AVE, MADISON, WI 53713
 PRINTING DATE: 3/5/20

CONTRACT NO: #####

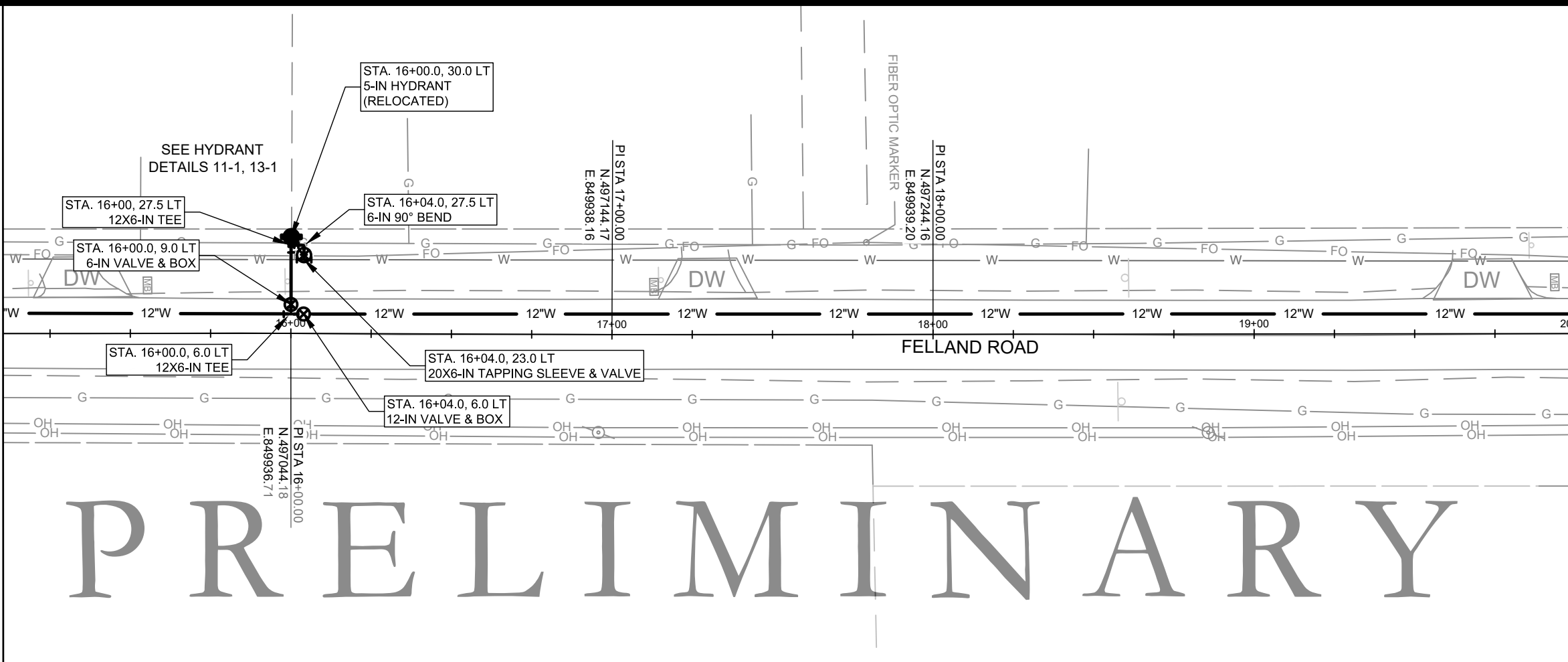
FELLAND ROAD HYDRAULIC IMPROVEMENTS
 WATER PLAN & PROFILE: FELLAND RD
 CITY OF MADISON, WISCONSIN



12327
 W-1

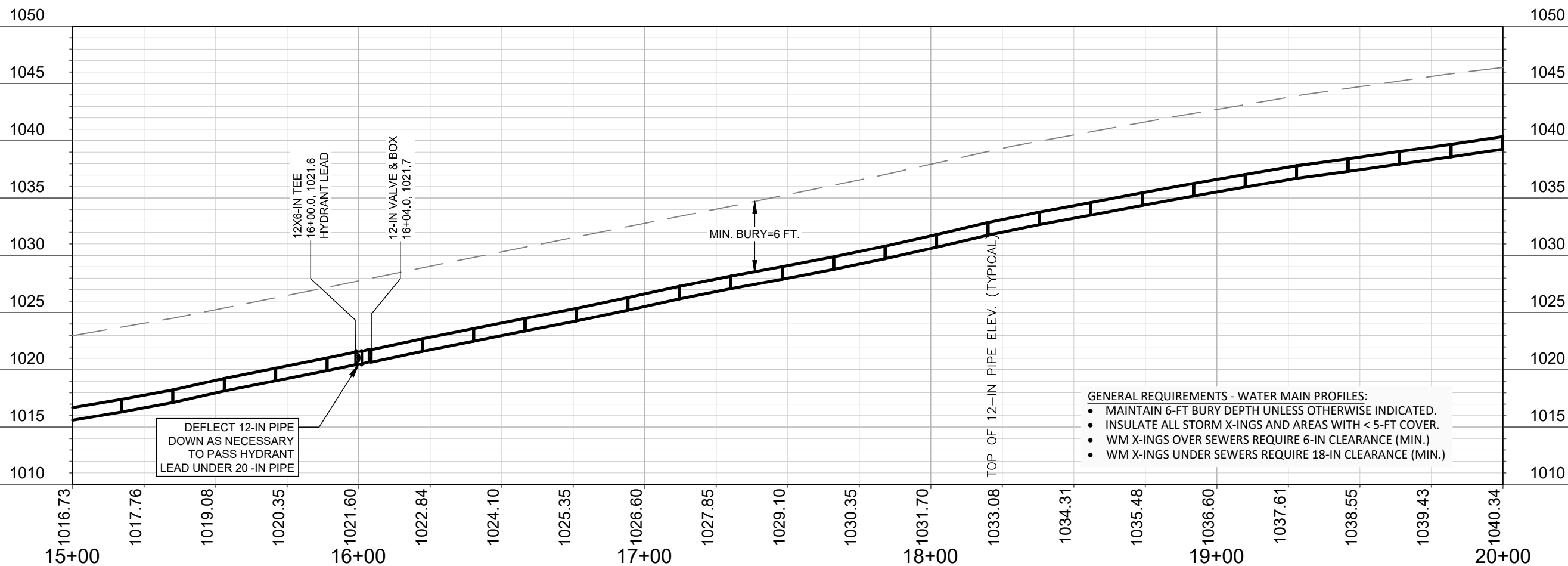


MATCHLINE STA. 15+10



MATCHLINE STA. 20+00

PRELIMINARY



- GENERAL REQUIREMENTS - WATER MAIN PROFILES:
- MAINTAIN 6-FT BURY DEPTH UNLESS OTHERWISE INDICATED.
 - INSULATE ALL STORM X-INGS AND AREAS WITH < 5-FT COVER.
 - WM X-INGS OVER SEWERS REQUIRE 6-IN CLEARANCE (MIN.)
 - WM X-INGS UNDER SEWERS REQUIRE 18-IN CLEARANCE (MIN.)

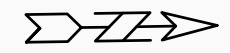
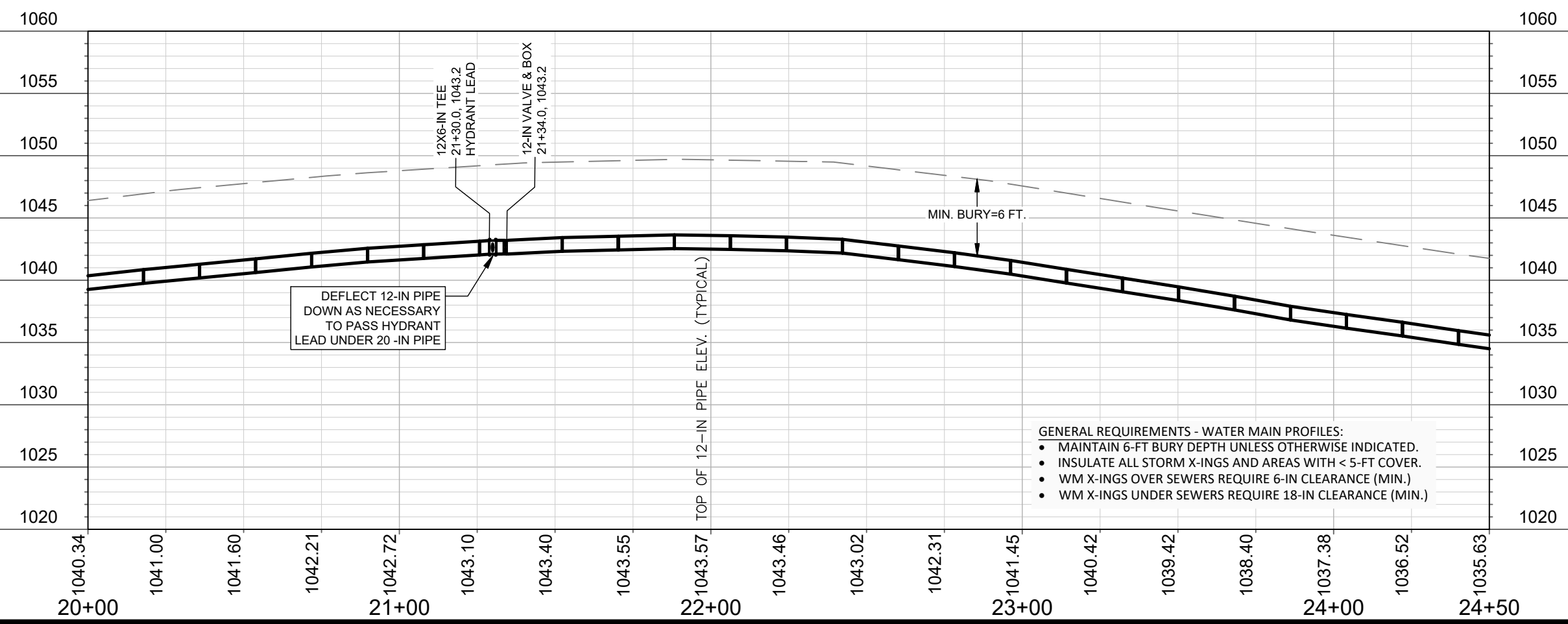
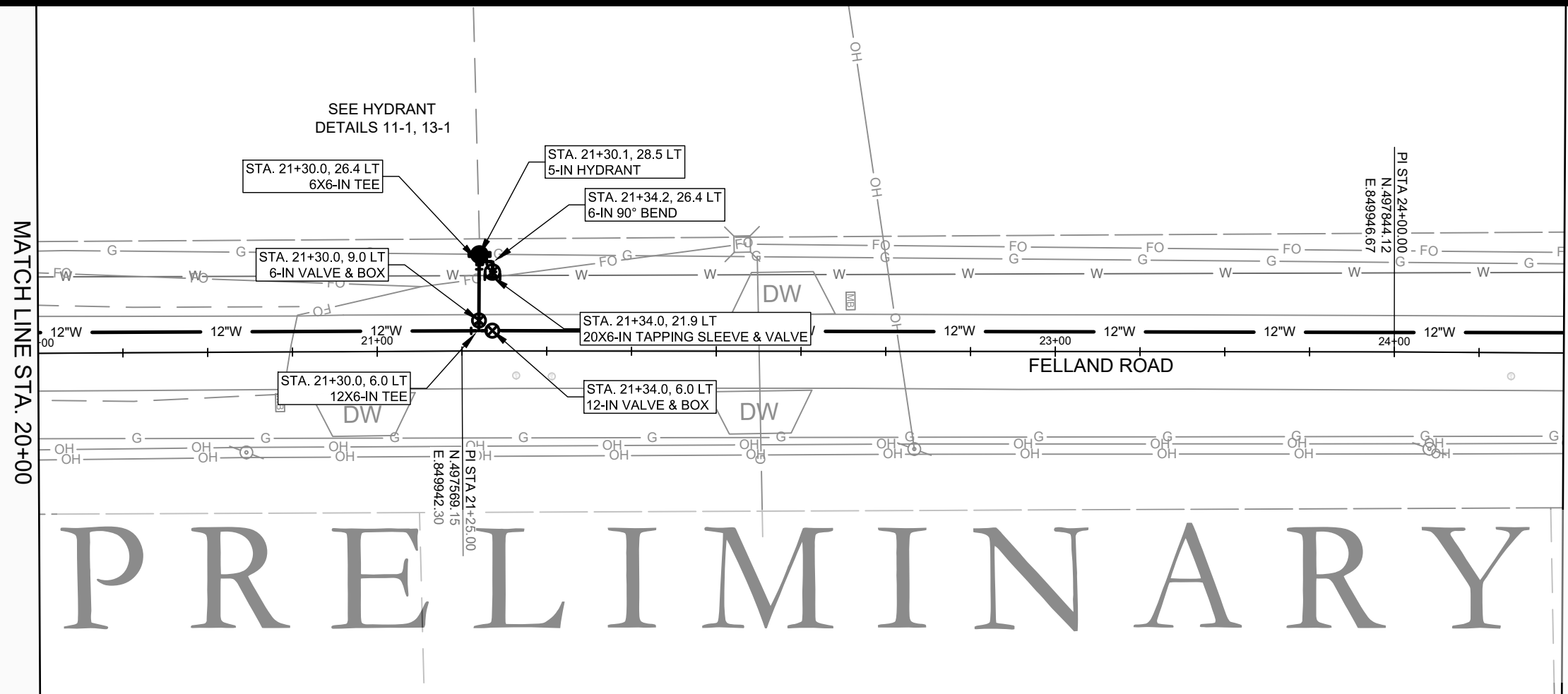


SCALE: 1" = 40'
 DESIGNED BY: DAR/KBM
 MADISON WATER UTILITY
 119 E OLIN AVE, MADISON, WI 53713
 PRINTING DATE: 3/5/20

FELLAND ROAD HYDRAULIC IMPROVEMENTS
 WATER PLAN & PROFILE: FELLAND RD
CITY OF MADISON, WISCONSIN
 CONTRACT NO: #####



12327
 W-2



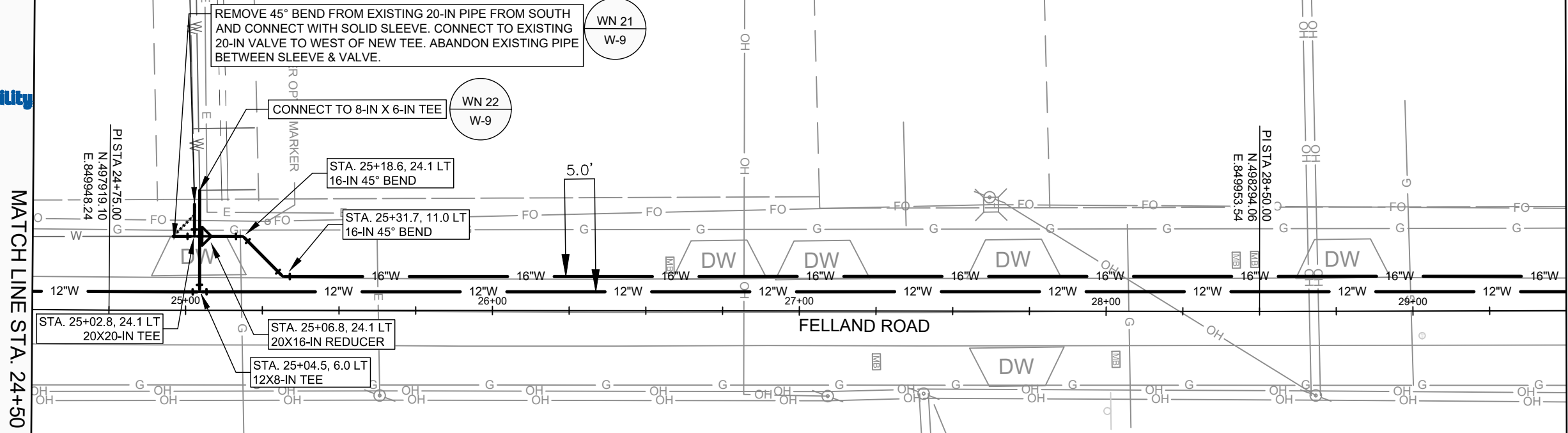
SCALE: 1" = 40'
 DESIGNED BY: DAR/KBM
 MADISON WATER UTILITY
 119 E OLIN AVE, MADISON, WI 53713
 PRINTING DATE: 3/5/20

CONTRACT NO: #####

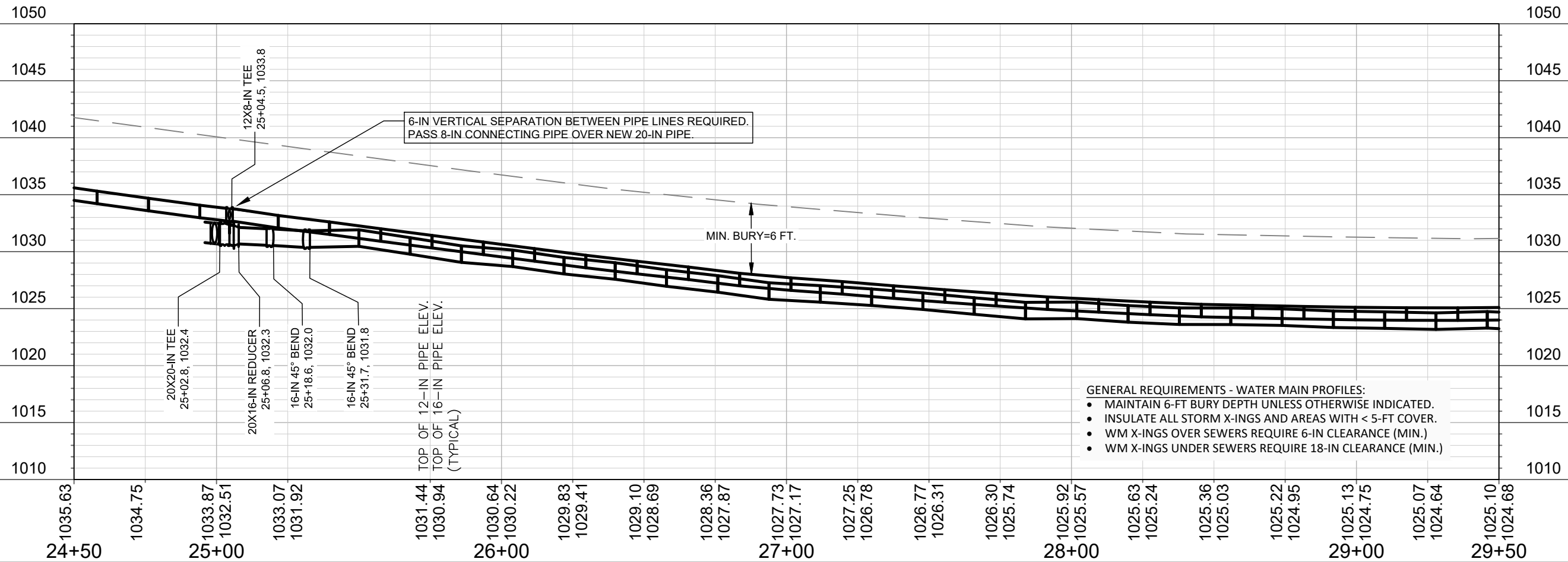
FELLAND ROAD HYDRAULIC IMPROVEMENTS
 WATER PLAN & PROFILE: FELLAND RD
CITY OF MADISON, WISCONSIN



12327
 W-3



PRELIMINARY



- GENERAL REQUIREMENTS - WATER MAIN PROFILES:**
- MAINTAIN 6-FT BURY DEPTH UNLESS OTHERWISE INDICATED.
 - INSULATE ALL STORM X-INGS AND AREAS WITH < 5-FT COVER.
 - WM X-INGS OVER SEWERS REQUIRE 6-IN CLEARANCE (MIN.)
 - WM X-INGS UNDER SEWERS REQUIRE 18-IN CLEARANCE (MIN.)

MATCH LINE STA. 24+50

MATCH LINE STA. 29+50

FELLAND ROAD HYDRAULIC IMPROVEMENTS
 WATER PLAN & PROFILE: FELLAND RD
CITY OF MADISON, WISCONSIN

SCALE: 1" = 40'
 DESIGNED BY: DAR/KBM
 MADISON WATER UTILITY
 119 E OLIN AVE, MADISON, WI 53713
 PRINTING DATE: 3/5/20

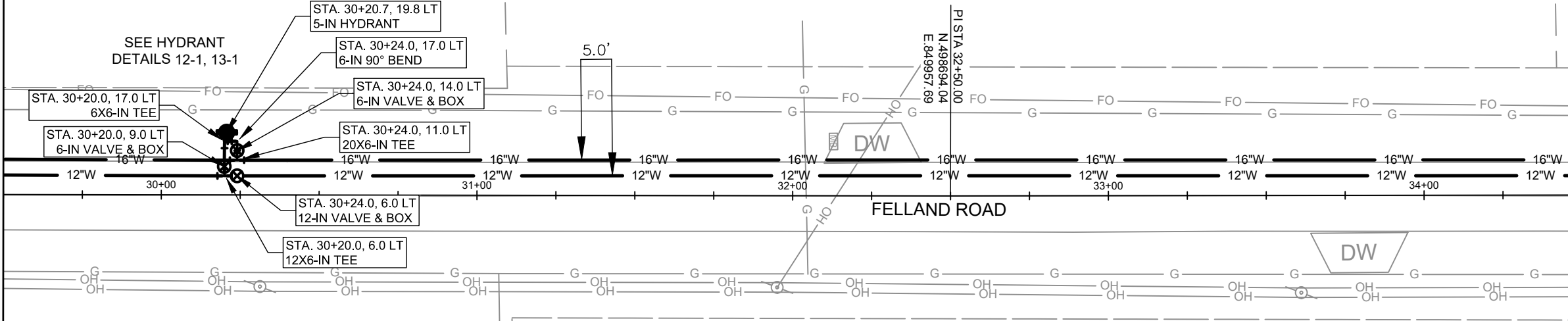
CONTRACT NO: #####



12327
 W-4

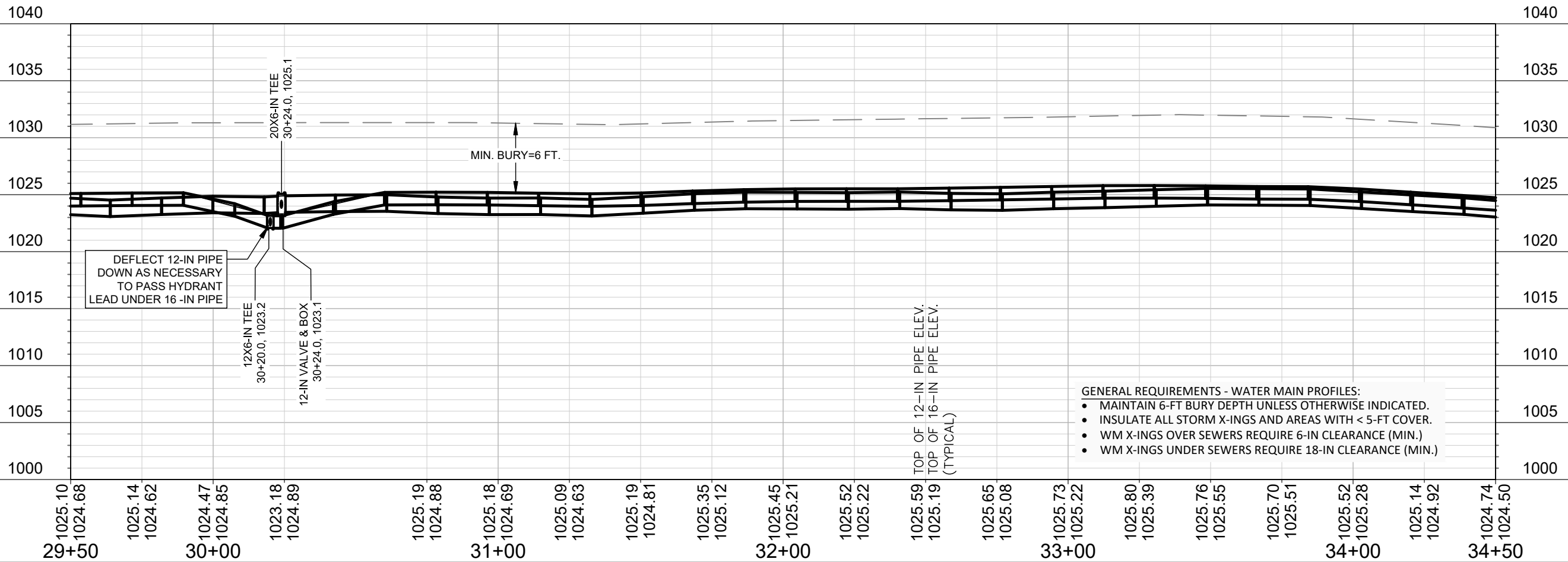


MATCH LINE STA. 29+50



MATCH LINE STA. 34+50

PRELIMINARY



- GENERAL REQUIREMENTS - WATER MAIN PROFILES:
- MAINTAIN 6-FT BURY DEPTH UNLESS OTHERWISE INDICATED.
 - INSULATE ALL STORM X-INGS AND AREAS WITH < 5-FT COVER.
 - WM X-INGS OVER SEWERS REQUIRE 6-IN CLEARANCE (MIN.)
 - WM X-INGS UNDER SEWERS REQUIRE 18-IN CLEARANCE (MIN.)

FELLAND ROAD HYDRAULIC IMPROVEMENTS

WATER PLAN & PROFILE: FELLAND RD

CITY OF MADISON, WISCONSIN

SCALE: 1" = 40'

DESIGNED BY: DAR/KBM
MADISON WATER UTILITY
119 E OLIN AVE, MADISON, WI 53713
PRINTING DATE: 3/5/20

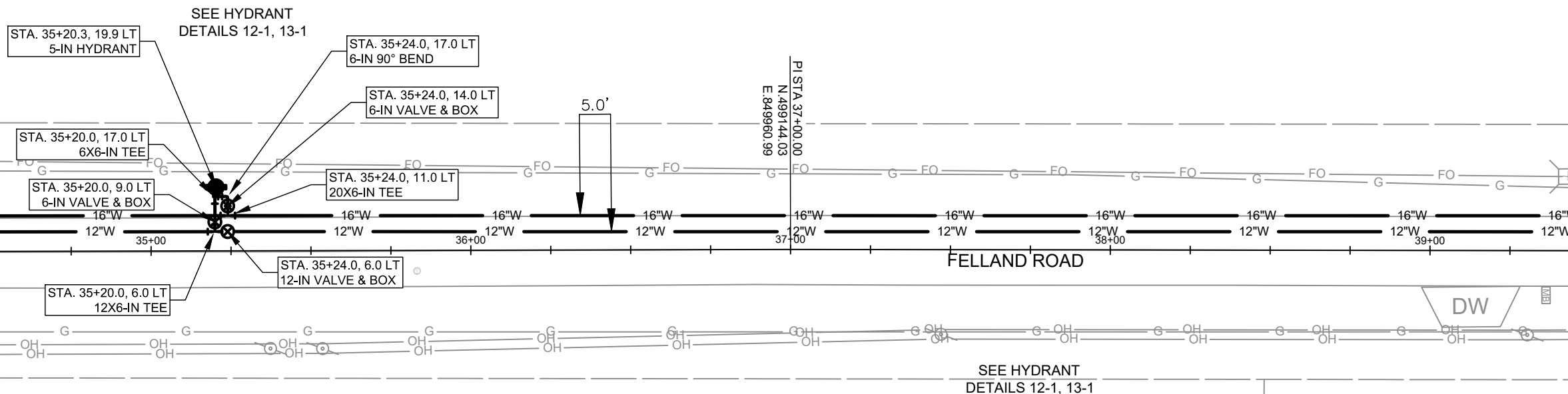
CONTRACT NO: #####



12327
W-5

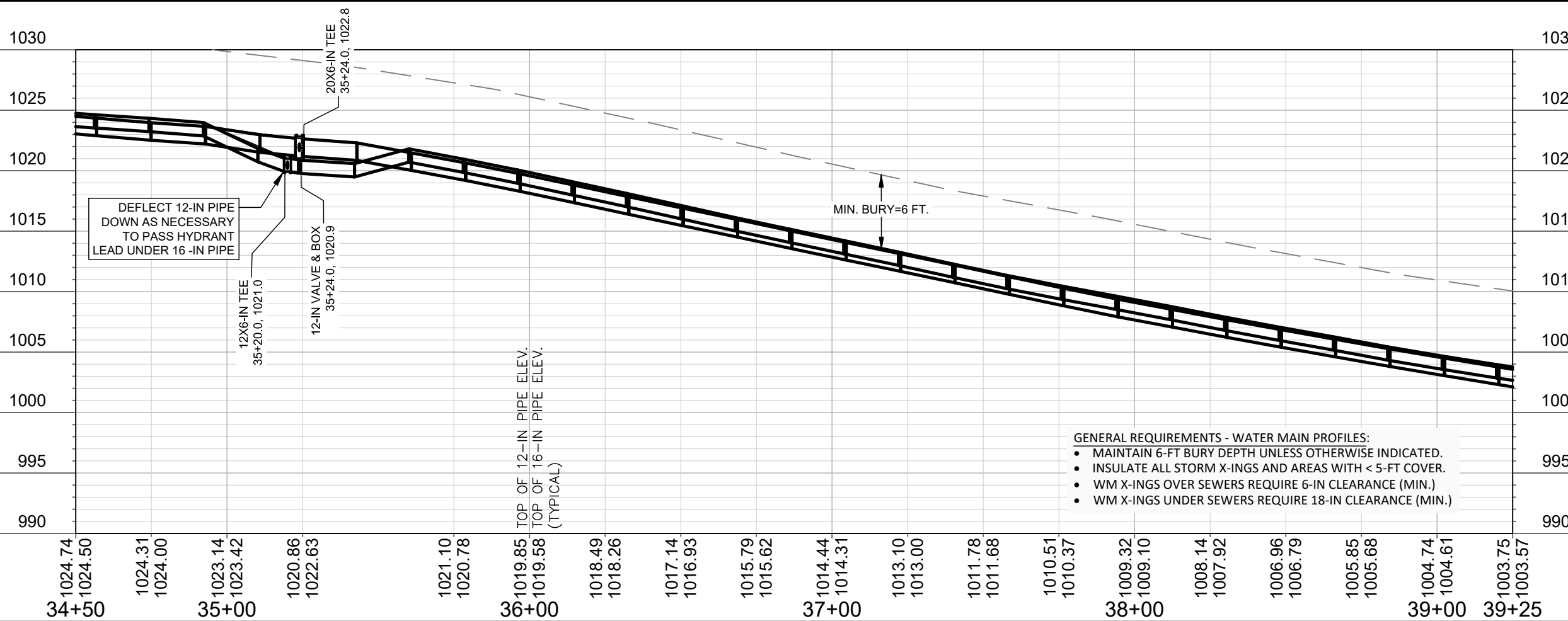


MATCH LINE STA. 34+50



MATCH LINE STA. 39+50

PRELIMINARY



FELLAND ROAD HYDRAULIC IMPROVEMENTS
 WATER PLAN & PROFILE: FELLAND RD
 CITY OF MADISON, WISCONSIN



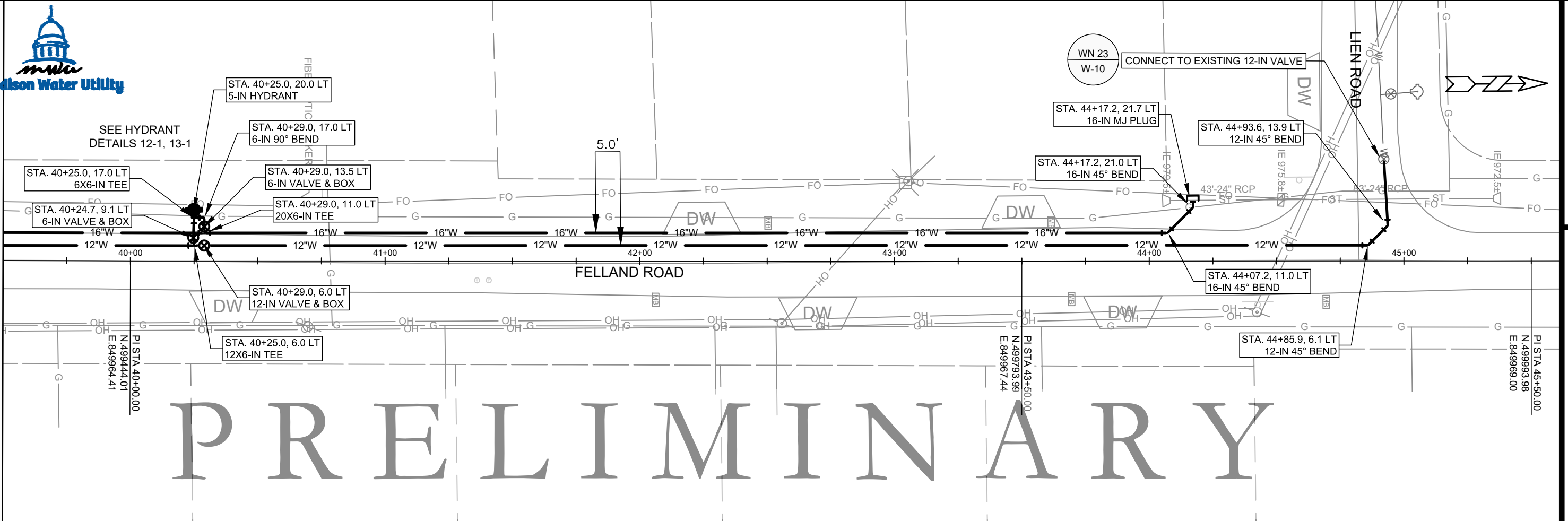
12327
 W-6

SCALE: 1" = 40'
 DESIGNED BY: DAR/KBM
 MADISON WATER UTILITY
 119 E OLIN AVE, MADISON, WI 53713
 PRINTING DATE: 3/5/20

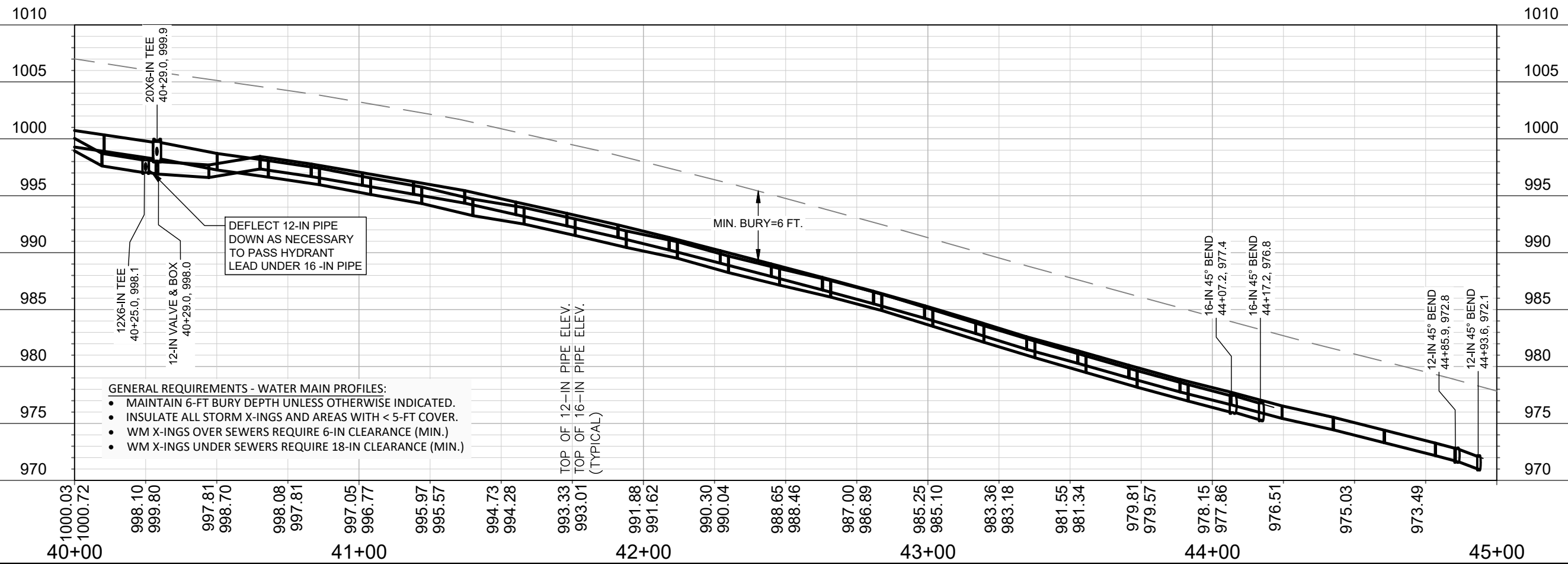
CONTRACT NO: #####



MATCH LINE STA. 39+50



PRELIMINARY



FELLAND ROAD HYDRAULIC IMPROVEMENTS
 WATER PLAN & PROFILE: FELLAND RD
CITY OF MADISON, WISCONSIN

SCALE: 1" = 40'
 DESIGNED BY: DAR/KBM
 MADISON WATER UTILITY
 119 E OLIN AVE, MADISON, WI 53713
 PRINTING DATE: 3/5/20

CONTRACT NO: #####



12327
 W-7

PRELIMINARY



1" = 100'

WALKING WAY

BRIDLE WAY

12" W

FELLAND RD

FELLAND RD

WN 20
W-1

- SALVAGE & RELOCATE HYDRANT, SALVAGE REDUCER AND CONNECT TO EXISTING 12-IN PIPE WITH 12-IN 45° BEND.
- ISOLATION VALVE: V-6 300 FT. SOUTH

HV-5 V-6 ISOLATION VALVE V-6 FOR 12-IN PIPE CONNECTIONS 300 FT. NORTH, AT SERVICE ROAD TO RESERVOIR & LIEN ROAD

HV-3 V-4 ISOLATION VALVE V-4 FOR 20-IN PIPE CONNECTION 1900 FT. NORTH

DISCLAIMER NOTE:
THE WATER IMPACT PLAN IS PROVIDED FOR REFERENCE PURPOSES TO AID PLANNING CONNECTION POINT ISOLATION AND PREPARING NOTIFICATION LISTS DURING PLANNED OUTAGES. REQUEST ANY ALTERNATIVE CONNECTION METHODS IN WRITING, PER SPECS.

FELLAND ROAD HYDRAULIC IMPROVEMENTS
WATER IMPACT PLAN
CITY OF MADISON, WISCONSIN

SCALE: #####
DESIGNED BY: DAR/KBM
MADISON WATER UTILITY
119 E OLIN AVE, MADISON, WI 53713
PRINTING DATE: 3/5/2020

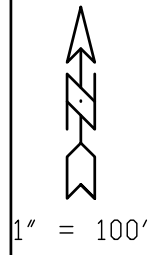
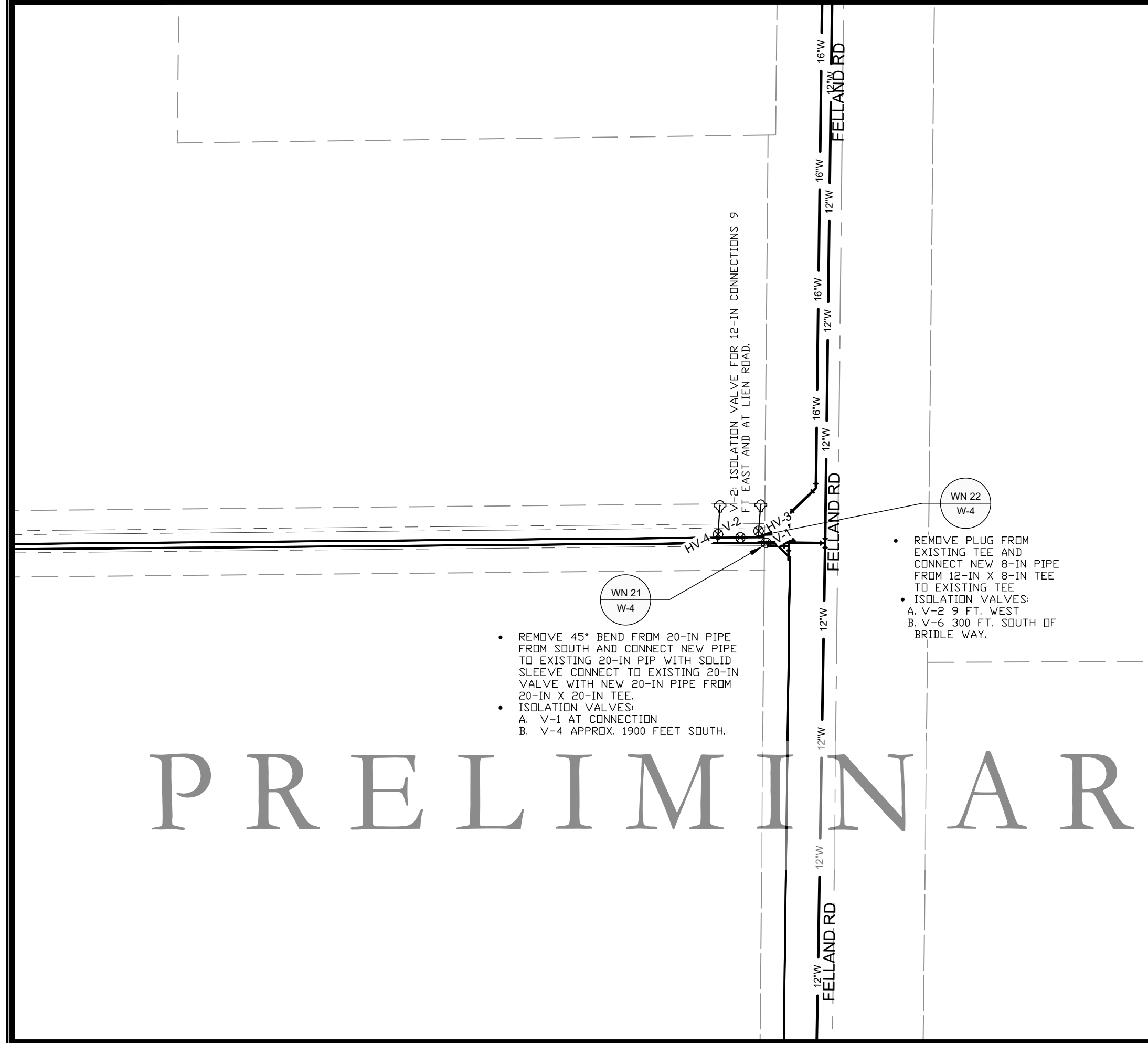
CONTRACT NO: #####



12327

W-8

PRELIMINARY



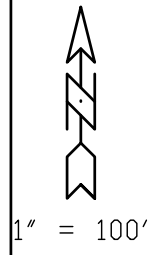
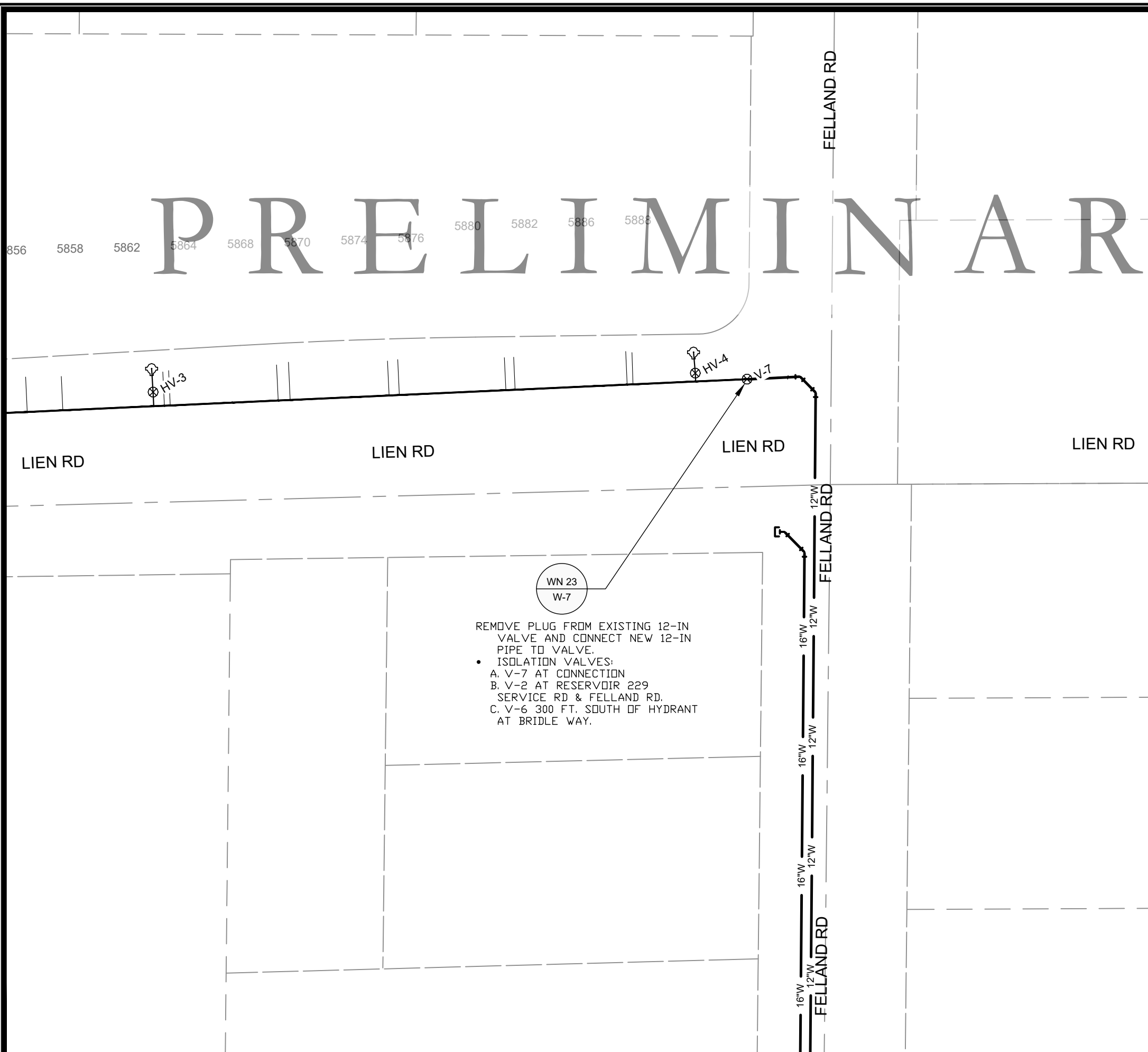
SCALE: #####
 DESIGNED BY: DAR/KBM
 MADISON WATER UTILITY
 119 E OLIN AVE, MADISON, WI 53713
 PRINTING DATE: 3/5/2020

FELLAND ROAD HYDRAULIC IMPROVEMENTS
 WATER IMPACT PLAN
 CITY OF MADISON, WISCONSIN
 CONTRACT NO: #####



DISCLAIMER NOTE:
 THE WATER IMPACT PLAN IS PROVIDED FOR REFERENCE PURPOSES TO AID PLANNING CONNECTION POINT ISOLATION AND PREPARING NOTIFICATION LISTS DURING PLANNED OUTAGES. REQUEST ANY ALTERNATIVE CONNECTION METHODS IN WRITING, PER SPECS.

12327
 W-9



PRELIMINARY

REMOVE PLUG FROM EXISTING 12-IN VALVE AND CONNECT NEW 12-IN PIPE TO VALVE.

- ISOLATION VALVES:
 - A. V-7 AT CONNECTION
 - B. V-2 AT RESERVOIR 229 SERVICE RD & FELLAND RD.
 - C. V-6 300 FT. SOUTH OF HYDRANT AT BRIDLE WAY.

DISCLAIMER NOTE:
 THE WATER IMPACT PLAN IS PROVIDED FOR REFERENCE PURPOSES TO AID PLANNING CONNECTION POINT ISOLATION AND PREPARING NOTIFICATION LISTS DURING PLANNED OUTAGES. REQUEST ANY ALTERNATIVE CONNECTION METHODS IN WRITING, PER SPECS.

SCALE: #####
 DESIGNED BY: DAR/KBM
 MADISON WATER UTILITY
 119 E OLIN AVE, MADISON, WI 53713
 PRINTING DATE: 3/5/2020

FELLAND ROAD HYDRAULIC IMPROVEMENTS
 WATER IMPACT PLAN
 CITY OF MADISON, WISCONSIN
 CONTRACT NO: #####

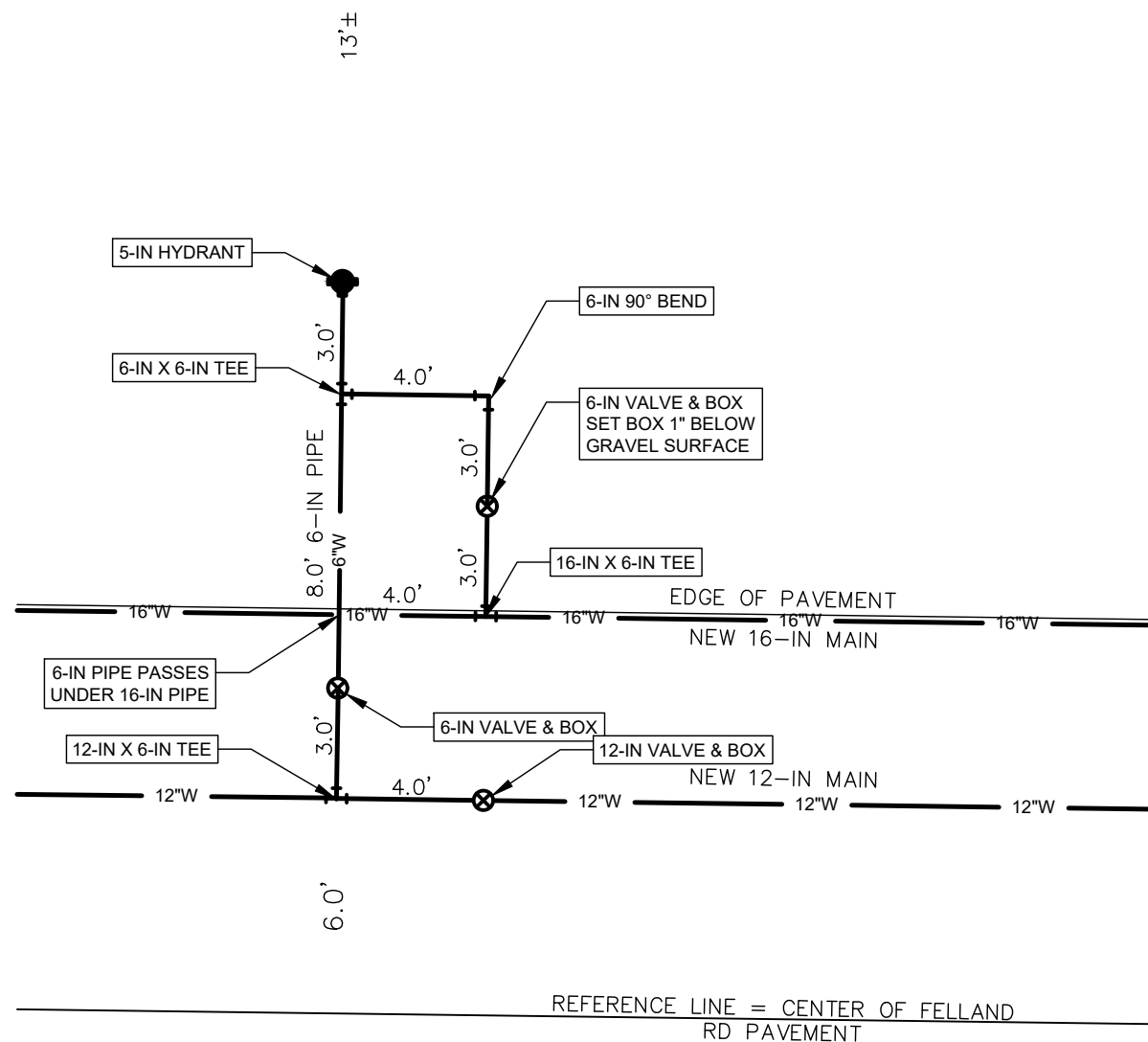


12327
 W-10

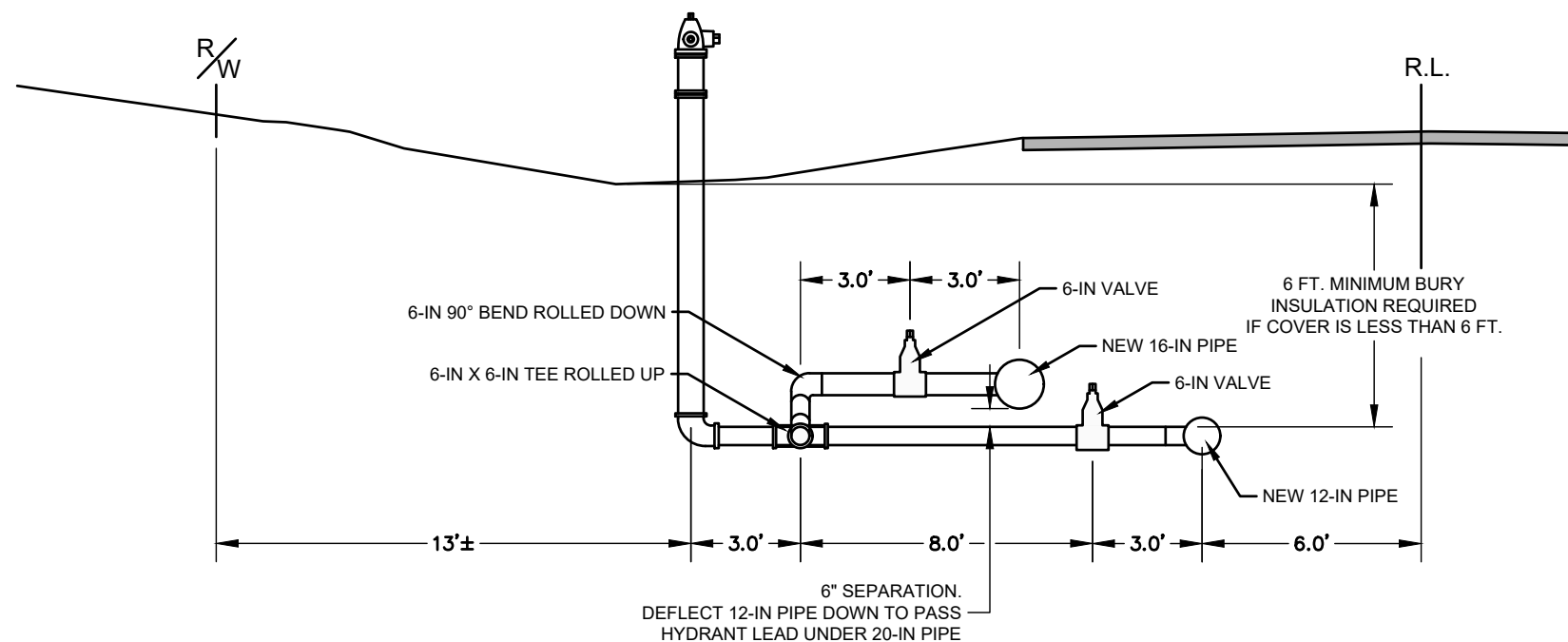


PRELIMINARY

RIGHT-OF-WAY



PLAN VIEW: 1' = 5'



PROFILE VIEW: 1' = 5'

DETAIL 12-1
HYDRANT CONNECTION
STAS. 30+20, 35+20 & 40+25

SCALE: #####

DESIGNED BY: DAR/KBM
MADISON WATER UTILITY
119 E OLIN AVE, MADISON, WI 53713
PRINTING DATE: 3/3/20

CONTRACT NO: #####

FELLAND ROAD HYDRAULIC IMPROVEMENTS

WATER DETAILS

CITY OF MADISON, WISCONSIN



12327

W-12



CONSTRUCTION NOTES:

1. CONSTRUCT NEW WATER MAIN 6.0' BELOW FINISHED GRADE, UNLESS OTHERWISE NOTED. INSULATE MAIN WITH POLYSTYRENE BOARD AT UTILITY CROSSINGS OR OTHER AREAS IDENTIFIED BY ENGINEER AS HAVING INADEQUATE COVER.
2. VERIFY SIZE OF EXISTING WATER SERVICES AND RECONNECT SERVICES AS INDICATED.
3. MINIMIZE DISRUPTION OF SERVICE TO CUSTOMERS. NOTIFY PER CONTRACT REQUIREMENTS OF ANY PLANNED WATER OUTAGE.
4. THE EXISTING UTILITIES SHOWN ON THIS REPRESENT THE BEST INFORMATION AVAILABLE TO THE WATER UTILITY AT THE TIME OF PLAN REPARATION. CONTRACTOR IS RESPONSIBLE OR HAVING EACH UTILITY LOCATED PRIOR TO COMMENCING WORK.

- | | |
|--------|---|
| WN-1 | REPLACE THE EXISTING LEAD SERVICE WITH A NEW COPPER SERVICE. |
| WN-2 | EXTEND AND RECONNECT THE EXISTING COPPER SERVICE TO THE NEW WATER MAIN. |
| WN-3 | EXISTING SERVICE TO BE ABANDONED WHEN THE WATER MAIN IS CUT OFF. |
| WN-4 | DISCONNECT FROM THE OLD WATER MAIN AND RECONNECT THE EXISTING COPPER WATER SERVICE LATERAL TO THE NEW WATER MAIN. |
| WN-5 | RELOCATE THE EXISTING FIRE HYDRANT. |
| WN-6 | ABANDON WATER VALVE ACCESS STRUCTURE. |
| WN-7 | FURNISH AND INSTALL THE NEW TOP SECTION FOR THE WATER ACCESS STRUCTURE. |
| WN-8 | ABANDON THE VALVE BOX. |
| WN-9 | FURNISH THE DITCH, COMPACTION, AND ALL MATERIALS AND LABOR FOR THE INSTALLATION OF NEW SERVICE LATERAL. |
| WN-10 | REMOVE AND SALVAGE EXISTING HYDRANT |
| WN-11 | REPLACE THE EXISTING COPPER SERVICE WITH A COPPER SERVICE |
| WN-20+ | SEE WATER IMPACT PLAN FOR CONNECTION POINT ISOLATION AND WATER SHUT-OFF NOTIFICATION INFORMATION. |

| WATER UTILITY ULO SCHEDULE | | | | |
|----------------------------|---------|---------|--------|-------|
| ULO #1 | UTILITY | STATION | OFFSET | SHEET |

PRELIMINARY

***ESTIMATE OF MATERIALS SUPPLIED BY CONTRACTOR:**

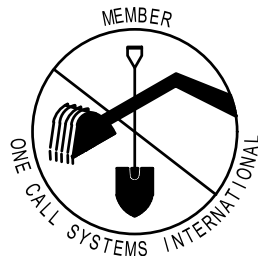
| PAY_ITEM_ID | DESCRIPTION | QUANTITY | UNIT |
|-------------|---|----------|------|
| 70002 | FURNISH AND INSTALL 6-INCH PIPE & FITTINGS | 165 | LNFT |
| 70003 | FURNISH AND INSTALL 8-INCH PIPE & FITTINGS | 35 | LNFT |
| 70005 | FURNISH AND INSTALL 12-INCH PIPE & FITTINGS | 3500 | LNFT |
| 70006 | FURNISH AND INSTALL 16-INCH PIPE & FITTINGS | 1925 | LNFT |
| 70007 | FURNISH AND INSTALL 20-INCH PIPE & FITTINGS | 20 | LNFT |
| 70031 | FURNISH AND INSTALL 6-INCH WATER VALVE | 9 | EACH |
| 70034 | FURNISH AND INSTALL 12-INCH WATER VALVE | 6 | EACH |
| 70040 | FURNISH INSTALL AND SALVAGE HYDRANT | 6 | EACH |
| 71018 | 16-IN MJ PLUG | 1 | EACH |
| 71032 | 20-IN SOLID SLEEVE | 1 | EACH |
| 71110 | 6-IN 90° BEND | 6 | EACH |
| 71125 | 12-IN 45° BEND | 4 | EACH |
| 71127 | 16-IN 45° BEND | 4 | EACH |
| 71187 | 20X16-IN REDUCER | 1 | EACH |
| 71208 | 6X6-IN TEE | 5 | EACH |
| 71217 | 12X6-IN TEE | 7 | EACH |
| 71218 | 12X8-IN TEE | 1 | EACH |
| 71242 | 20X6-IN TEE | 3 | EACH |
| 71249 | 20X20-IN TEE | 1 | EACH |
| 71317 | 20X6-IN TAPPING SLEEVE | 3 | EACH |

** ESTIMATE OF MATERIALS IS FOR INFORMATION ONLY. ENGINEER DOES NOT GUARANTEE ACCURACY OF MATERIAL TAKE-OFF.*

TO OBTAIN LOCATION OF PARTICIPANTS' UNDERGROUND FACILITIES BEFORE YOU DIG IN WISCONSIN

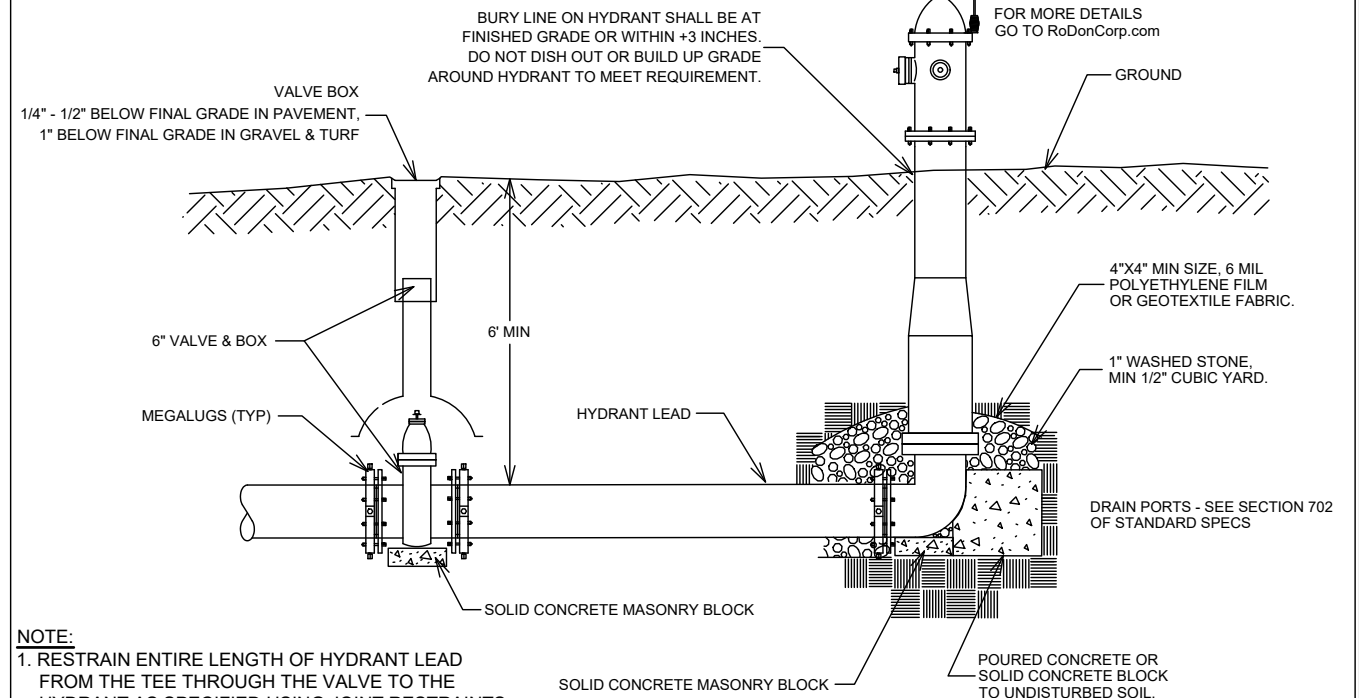
CALL DIGGERS HOTLINE TOLL FREE 811 OR 1-800-242-8511
 FAX-A-LOCATE 1-800-338-3860
 TDD (FOR HEARING IMPAIRED) 1-800-542-2289

WIS. STATUTE 182.0175 (1974) REQUIRES MIN. OF 3 WORK DAYS NOTICE BEFORE YOU EXCAVATE.



DISCLAIMER NOTE: UTILITY LOCATIONS SHOWN ARE APPROXIMATE ONLY. IT SHALL BE THE CONTRACTOR'S RESPONSIBILITY TO DETERMINE THE EXACT HORIZONTAL AND VERTICAL LOCATION OF ALL EXISTING UNDERGROUND AND OVERHEAD UTILITIES PRIOR TO COMMENCING WORK.

**DETAIL 13-1
HYDRANT INSTALLATION**
(REFER TO SDD 7.04)



NOTE:
1. RESTRAIN ENTIRE LENGTH OF HYDRANT LEAD FROM THE TEE THROUGH THE VALVE TO THE HYDRANT AS SPECIFIED USING JOINT RESTRAINTS PER SECTION 703.10

CITY OF MADISON WATER UTILITY

NOT TO SCALE

TYPICAL HYDRANT INSTALLATION

FELLAND ROAD HYDRAULIC IMPROVEMENTS
 WATER ESTIMATE OF MATERIALS & MATERIALS
 CITY OF MADISON, WISCONSIN



12327
W-13

SCALE: #####
 DESIGNED BY: DAR/KBM
 MADISON WATER UTILITY
 119 E OLIN AVE, MADISON, WI 53713
 PRINTING DATE: 3/5/20

CONTRACT NO: #####