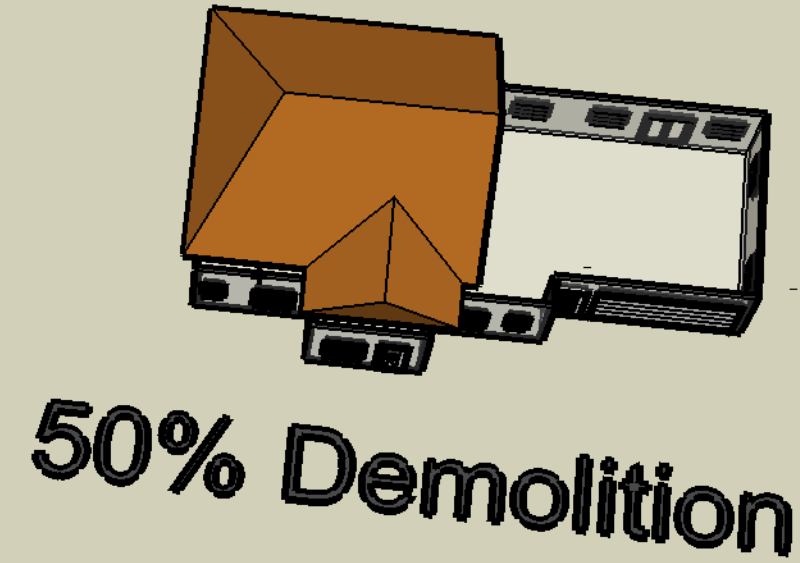
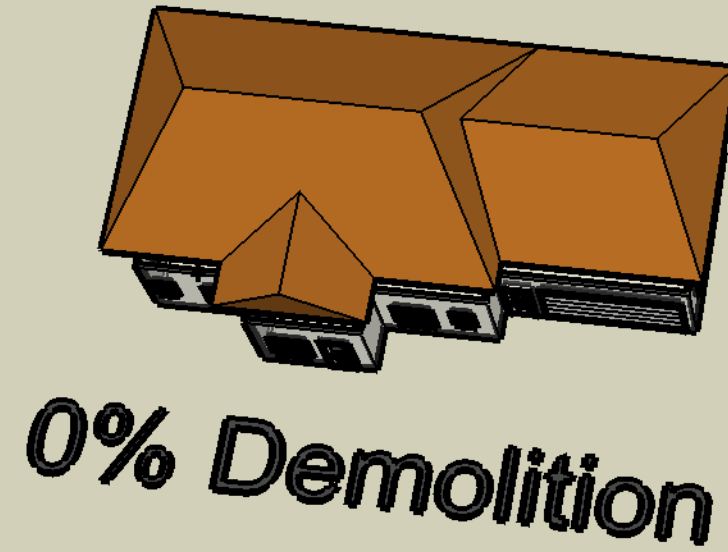


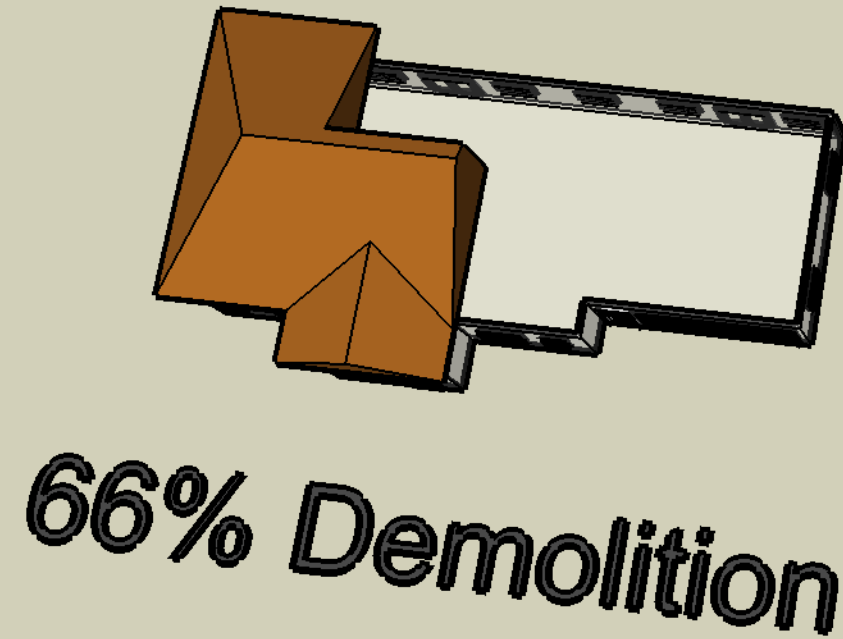
**DRAFT Illustrations
City of Madison Planning Division
10.06.08**

0% Demolition =
2090 Square Feet
Total Roof Coverage

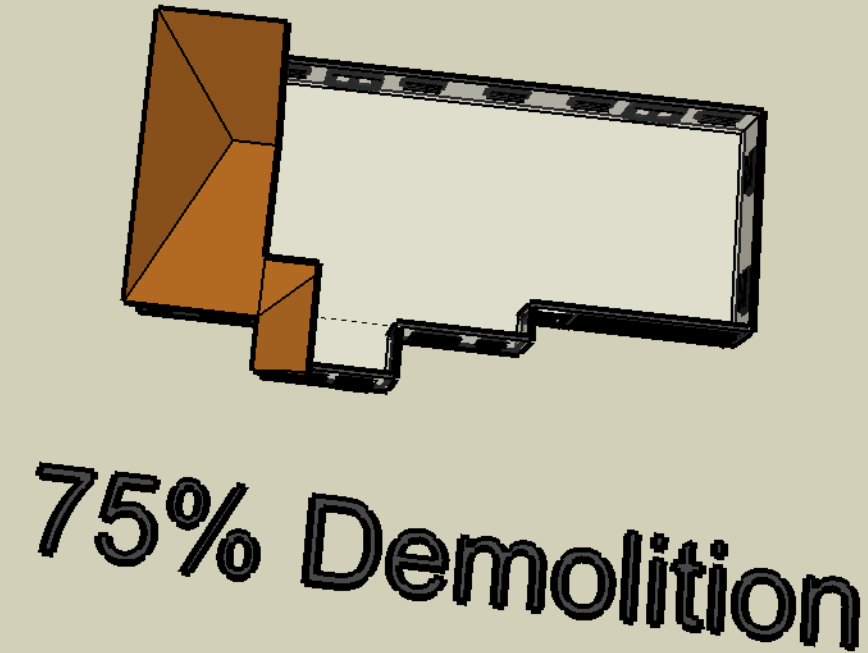


50% Demolition =
1045 Square Feet
Remaining Roof Coverage

66% Demolition =
697 Square Feet
Remaining Roof Coverage



75% Demolition =
523 Square Feet
Remaining Roof Coverage



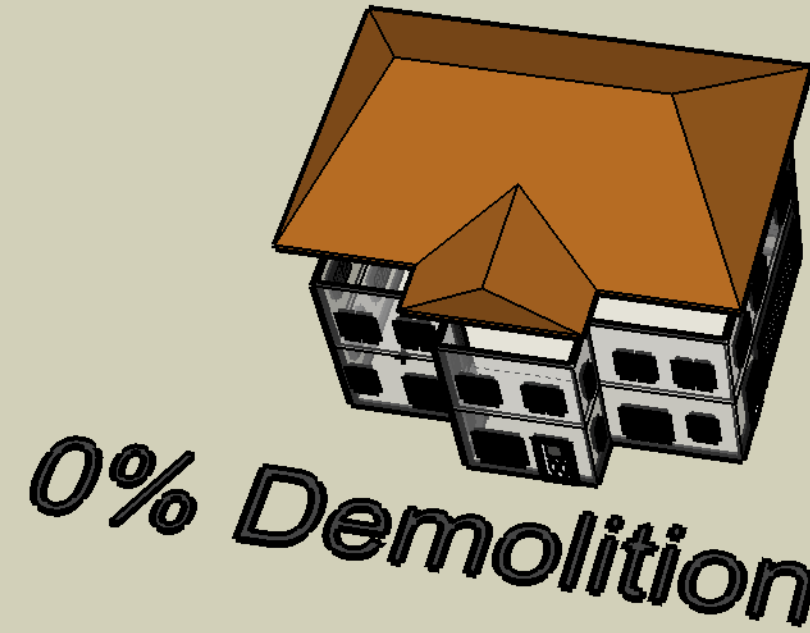
1-Story Ranch Roof Demolition

These examples illustrate different ways that a demolition of 50%, 66% and 75% of the roof can be accomplished.

For each illustration, demolition of the roof is measured by the amount of area that the roof covers. This measurement definition makes the pitch of the roof irrelevant.

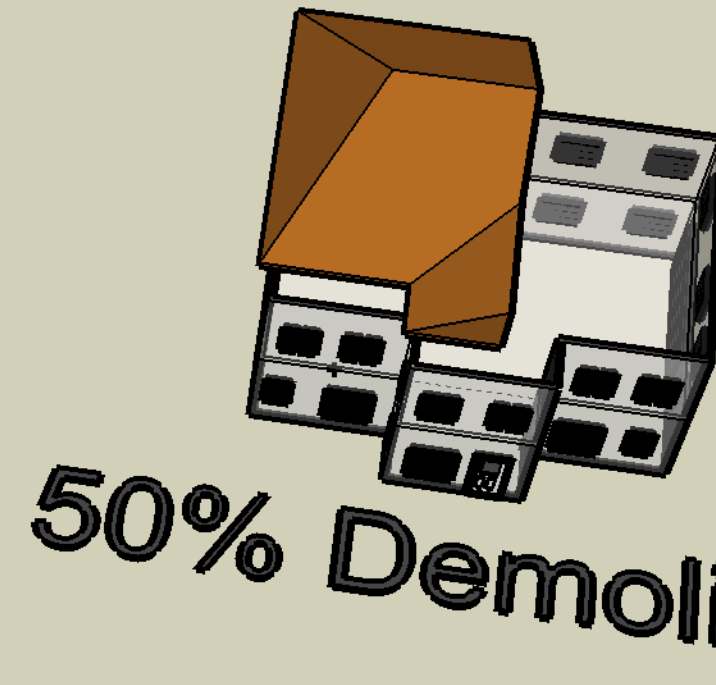
**DRAFT Illustrations
City of Madison Planning Division
10.06.08**

0% Demolition =
1440 Square Feet
Total Roof Coverage



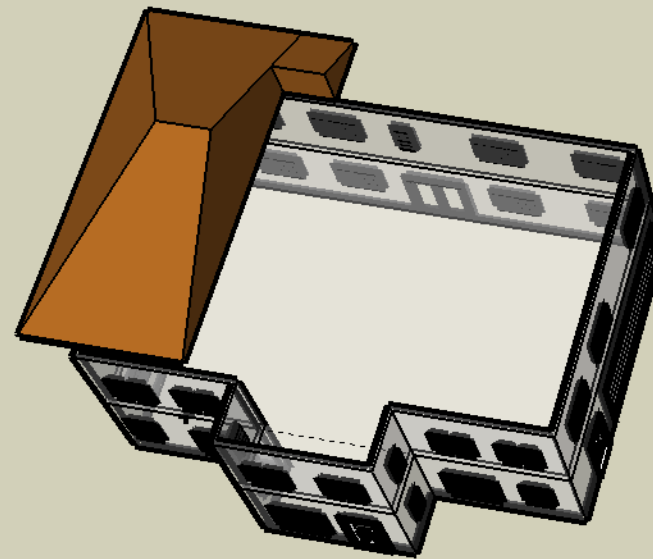
0% Demolition

50% Demolition =
720 Square Feet
Remaining Roof Coverage



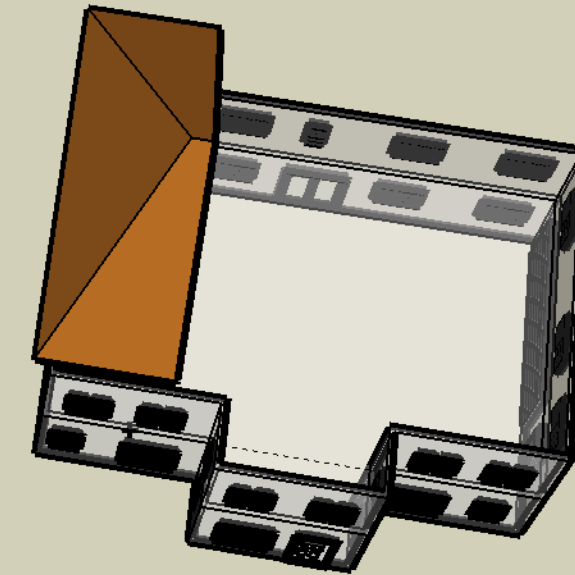
50% Demolition

66% Demolition =
480 Square Feet
Remaining Roof Coverage



66% Demolition

75% Demolition =
360 Square Feet
Remaining Roof Coverage



75% Demolition

2-Story Roof Demolition

These examples illustrate different ways that a demolition of 50%, 66% and 75% of the roof can be accomplished.

For each illustration, demolition of the roof is measured by the amount of area that the roof covers. This measurement definition makes the pitch of the roof irrelevant.