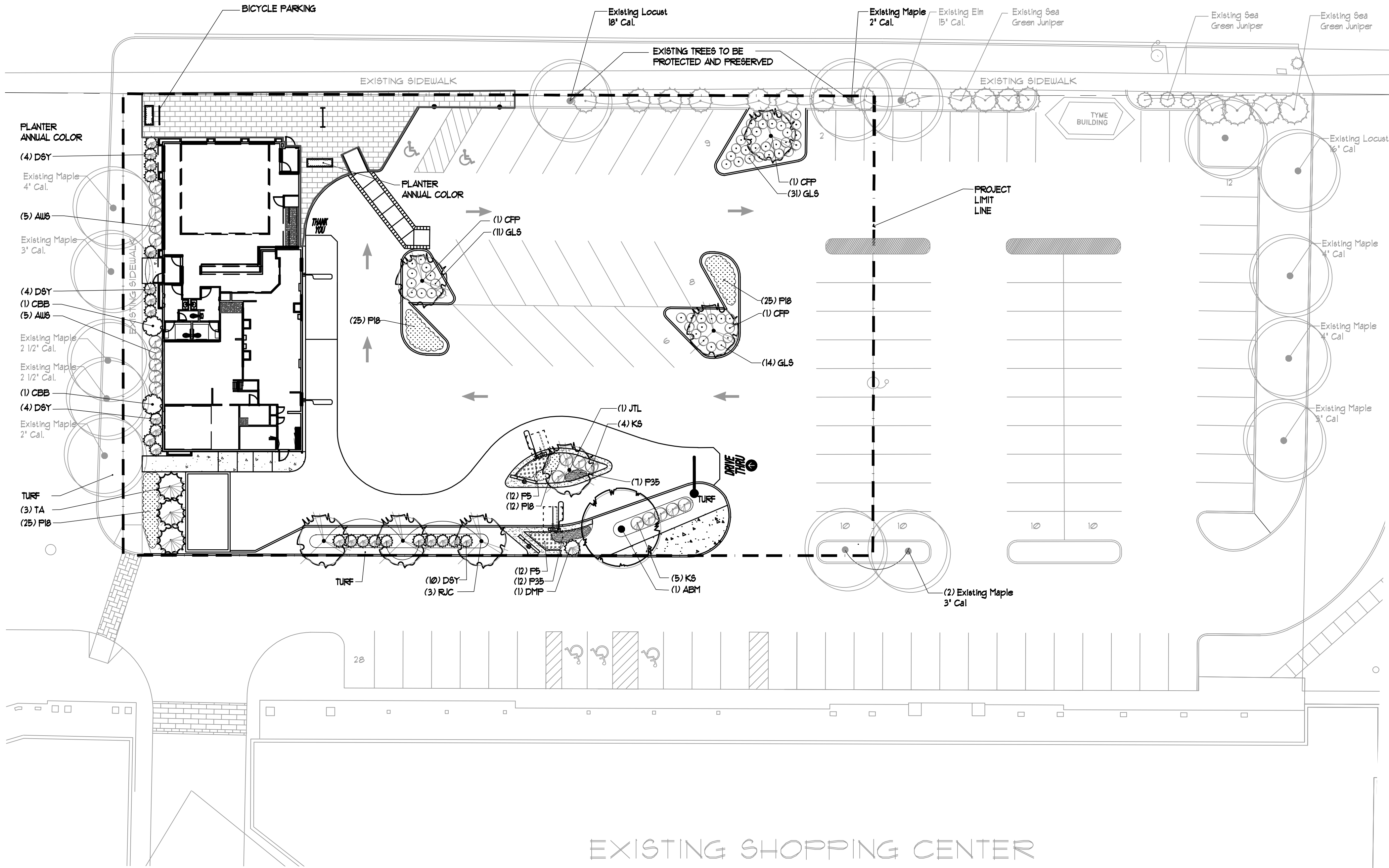


EAST WASHINGTON AVENUE (U.S.H. "151")



LANDSCAPE WORKSHEET

Parking Lots, Storage Areas and Loading Areas
(Section 28.04 Madison General Ordinance)

Project Location/Address:	East Washington Ave, Madison, WI
Name of Project:	Mc Donald's Restaurant
Owner/Contact:	Mc Donald's USA, LLC - Mike Mead
Address:	1650 West 82nd Street, Bloomington, MN 55431

- Number of Trees Required**
The number of trees required for the parking lot is based on the number of parking stalls. Using the Schedule for Required Trees on the attached worksheet, determine the number of trees required.
(Example: One tree per 10 parking stalls).
Landscape requirements for storage areas are determined by dividing the total square footage of the storage area by (300) square feet. This converts area to stalls.
(Example: 10,000 square feet is equivalent to (33) stalls or (3) trees and (160) points).
Number of Parking Stalls _____ 35
Total Square Footage of the Storage Area _____ 0
Divided by (300) Square Feet _____ 0
Number of Canopy Shade Trees Required (2" - 2 1/2" Caliper) _____ 3
(See Schedule)
- Number of Landscape Points Required**
The number of points required is also based on the number of parking stalls. Using the Point Schedule for Landscape Elements on the reverse side of this worksheet, determine the number of points required. (Example: 49.5 points are required for 10 stalls). A point fraction of (.5) or less may be disregarded, while a fraction in excess of (.5) must be counted as one point. Thus 49.5 points would be rounded down to 49.0 points required.
The number of points required for loading areas is (75) points for each loading berth. _____ 0
Number of Points Required (See Schedule in reverse side) _____ 169

Tabulation of Points and Credits
Indicate below the quantity and points for all landscape elements. Also, credit information for the boundary screening and any elements to be retained.

Elements	Point	Quantity	Points	Credits	Quantity	Points
Canopy Tree: 2" - 2 1/2"	35	1	35	0	0	0
Deciduous Shrubs	2	77	154	0	0	0
Evergreen Shrub	3	23	69	18	54	54
Decorative Wall or Fence (per 10 L.F.)	5	0	0	0	0	0
Earth Berm (per 10 L.F.)	5	0	0	0	0	0
Avg. Height 30"	2	0	0	0	0	0
Avg. Height 15"	1.5	3	45	0	0	0
Evergreen Trees 2" height minimum	15	7	105	0	0	0
Canopy Tree or Smaller Tree 1-1/2" - 2" Caliper (i.e., Crab)	15	7	105	0	0	0
Sub Total			408	+	54	462
TOTAL						462

*Trees required in Part 1 above, are not to be included in the point count.
TOTAL No. of Points Provided (Equal to or greater than points required)

PLANT MATERIAL SCHEDULE

SHADE TREES

SYM	AMT.	COMMON NAME	BOTANICAL NAME	SIZE	ROOT	REMARKS
ABM	1	AUTUMN BLAZE MAPLE	ACER X FREEMANII 'AUTUMN BLAZE'	3" CAL	BB	FULL, MATCHING HEADS

ORNAMENTAL TREES

CFP	3	GALLERY FLOWERING PEAR 'CLEVELAND SELECT'	PYRUS CALLERYANA 'CLEVELAND SELECT'	2 1/2" CAL	BB	UNIFORMLY BRANCHED CROUN
JTL	1	JAPANESE TREE LILAC 'IVORY SILK'	SYRINGA RETICULATA 'IVORY SILK'	2 1/2" CAL	BB	UNIFORMLY BRANCHED CROUN
RJC	3	RED JEWEL CRAB	MALUS 'RED JEWEL'	2 1/2" CAL	BB	UNIFORMLY BRANCHED CROUN

EVERGREEN TREES

TA	3	TECHNY ARBORVITAE	THUJA OCCIDENTALIS 'TECHNY'	6" HT	BB	SEMI-SHEARED, FULLY BRANCHED TO GROUND
----	---	-------------------	-----------------------------	-------	----	--

EVERGREEN SHRUBS

D6Y	22	DENSIFORMIS SPREADING YEW	TAXUS X MEDIA DENSIFORMIS	24" HT	BB	UNIFORM, BALANCED BRANCHING
DYP	1	DWARF MUGHO PINE	FINUS MUGO 'COMPACTA'	18" DIA	BB	UNIFORM, BALANCED BRANCHING

FLOWERING SHRUBS

AUS	10	ANTHONY WATERER SPIREA	SPIRAEA BUMALDA 'ANTHONY WATERER'	5"	POT	
CBB	2	COMPACT BURNING BUSH	EUONYMUS ALATUS 'COMPACTUM'	3"	BB	UNIFORM, BALANCED BRANCHING
GLS	56	GROW LOW FRAGRANT SUMAC	RUBUS AROMATICA 'GROW LOW'	5"	CG	
KS	9	KNOCKOUT SHRUB ROSE	ROSA 'KNOCKOUT'	5"	POT	

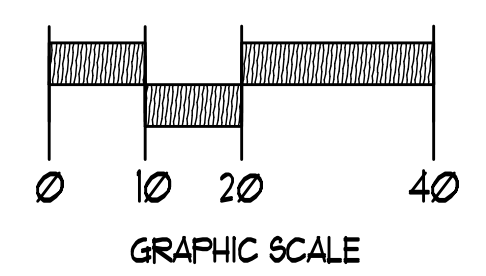
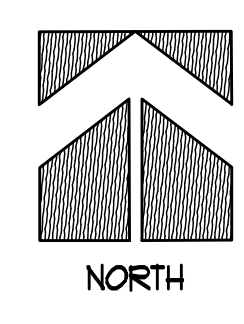
ORNAMENTAL GRASSES & PERENNIALS

P5	24	BLUE WONDER CATMINT	NEPETA FAASBENI 'BLUE WONDER'	4 1/2"	POT	18" SPACING
P18	81	DAYLILY 'STELLA de ORO'	HEMEROCALLIS 'STELLA de ORO'	4 1/2"	POT	18" SPACING
P35	19	KOBOLD SPIKE GAYFEATHER	LIATRIS SPICATA 'KOBOLD'	4 1/2"	POT	15" SPACING

THE LOCATIONS OF EXISTING UTILITY INSTALLATIONS AS SHOWN ON THIS PLAN ARE APPROXIMATE. THERE MAY BE OTHER UNDERGROUND UTILITY INSTALLATIONS WITHIN THE PROJECT AREA THAT ARE NOT SHOWN. THE CONTRACTOR SHALL BE RESPONSIBLE FOR VERIFYING THE EXISTENCE AND LOCATION OF ALL UNDERGROUND UTILITIES.

R. A. SMITH NATIONAL, ASSUMES NO RESPONSIBILITY FOR DAMAGES, LIABILITY OR COSTS RESULTING FROM CHANGES OR ALTERATIONS MADE TO THIS PLAN WITHOUT THE EXPRESSED WRITTEN CONSENT OF R. A. SMITH NATIONAL.

THIS PLAN IS FOR MUNICIPAL REVIEW ONLY, NOT FOR BIDDING OR CONSTRUCTION PURPOSES. ALL DETAILS AND SPECIFICATIONS WILL BE INCLUDED ON FINAL CONSTRUCTION DRAWINGS.



ALL INFORMATION CONTAINED ON THIS SHEET IS THE PROPERTY OF R. A. SMITH NATIONAL. THE POSSESSION, DISTRIBUTION, REPRODUCTION, AND USE OF ALL OR ANY PART OF THIS INFORMATION IS RESTRICTED AS SET FORTH IN THE CONTRACTUAL TERMS AND CONDITION ESTABLISHED BETWEEN R. A. SMITH NATIONAL AND THEIR CLIENT FOR THIS PROJECT. REPRODUCTION OR USE OF ANY PART BY ANY PERSON WITHOUT THE PERMISSION OF R. A. SMITH NATIONAL IS PROHIBITED.
© COPYRIGHT 2011
R.A. SMITH NATIONAL
16745 WEST BLUEMOUND ROAD, SUITE 200
BROOKFIELD, WI 53005

DESCRIPTION

DATE

R.A. Smith National
Beyond Surveying and Engineering

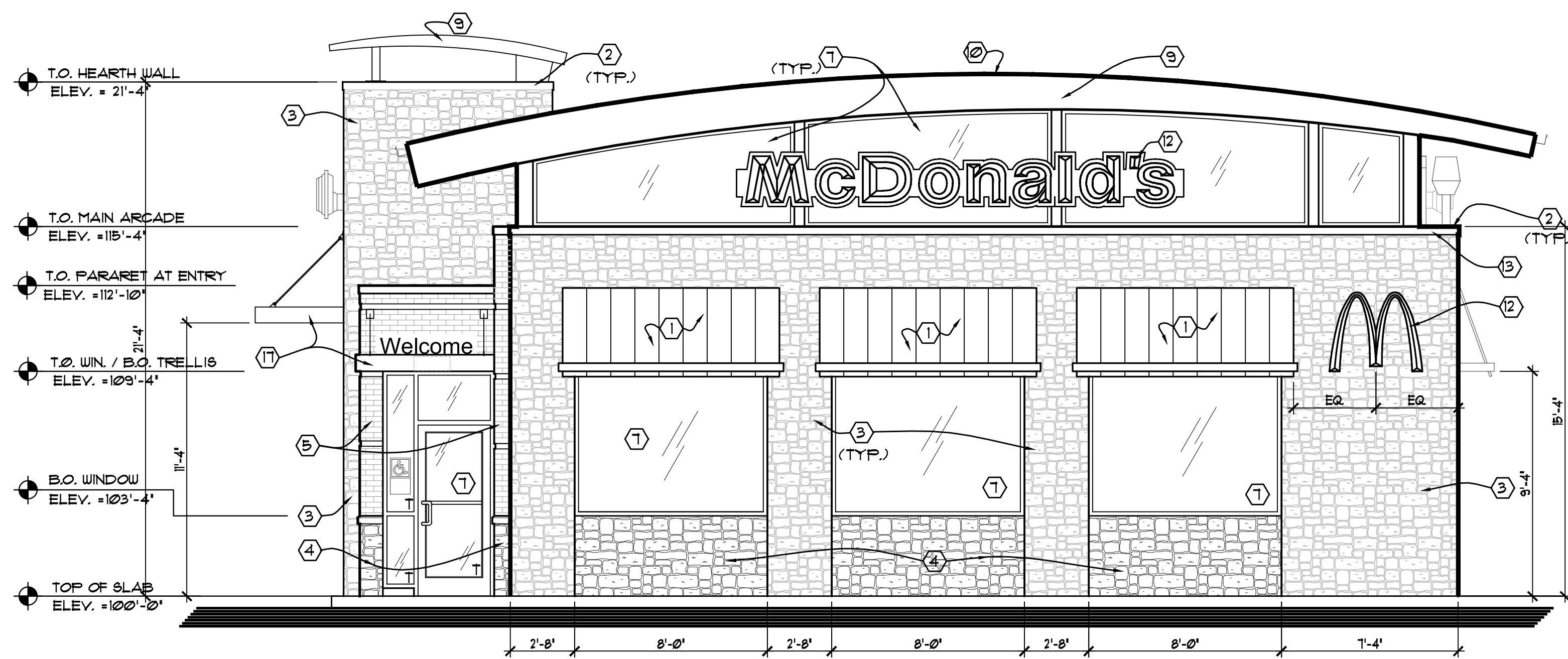
16745 W. Bluemound Road, Brookfield WI 53005-6938
262-781-0000 Fax 262-781-8466, www.rasmithnational.com

McDONALDS - EAST WASHINGTON MADISON, WI

PRELIMINARY LANDSCAPE PLAN

© COPYRIGHT 2008
R.A. Smith National, Inc.
DATE: 04/14/2011
SCALE: 1" = 20'
JOB NO. 3100177
PROJECT MANAGER:
RYAN J. LANCOUR, P.E.
DESIGNED BY: CNS
CHECKED BY: CNS

SHEET NUMBER
L-1



FRONT ELEVATION
1/4" = 1'-0"

ELEVATION KEYED NOTES:

THE FOLLOWING ELEVATION KEYED NOTES ARE ENCLOSED WITH A(2) SYMBOL ON THE ELEVATIONS.

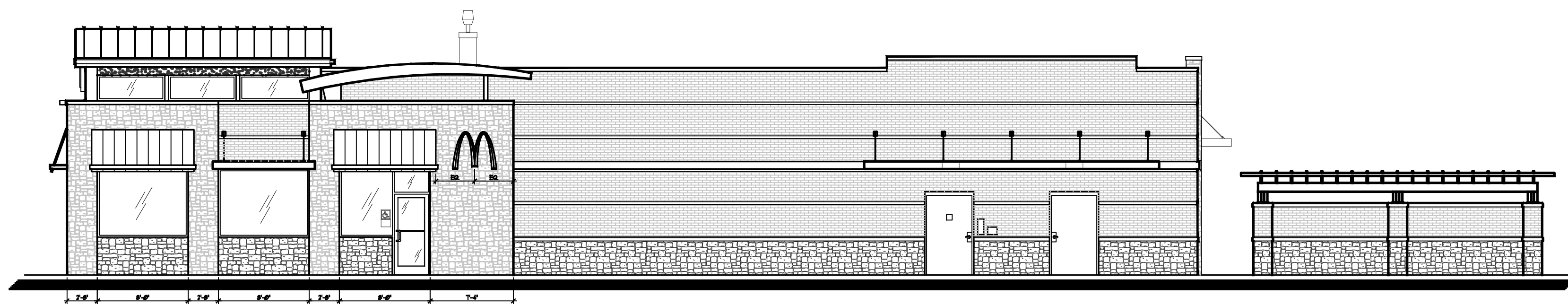
THESE NOTES APPLY TO ONE OR MORE ELEVATIONS.

- ① ILLUMINATED METAL AWNING BY SIGN SUPPLIER UNDER SEPARATE PERMIT. COLOR TO BE ALTERNATING STRIPES TO MATCH PANTONE 123U AND 109U.
- ② ALUMINUM COPING, NATURAL ANODIZED ALUMINUM.
- ③ CULTURED STONE ARCADE. STONE SHALL BE QUEENS CORNING COBBLEFIELD PATTERN. COLOR SHALL BE TEXAS CREAM CSV-2083.
- ④ CULTURED STONE ARCADE. STONE SHALL BE QUEENS CORNING COBBLEFIELD PATTERN. COLOR SHALL BE DESERT BLEND CSV-2066.
- ⑤ BRICK VENEER. ENDICOT BRICK, RUBIGO RED. BRICK PATTERN TO BE RUNNING BOND.
- ⑥ BRICK VENEER. ENDICOT BRICK, MIDLAND BLEND A. BRICK PATTERN TO BE RUNNING BOND.
- ⑦ 1" CLEAR INSULATED LOW-E GLASS SET IN NATURAL ANODIZED ALUM. FRAMES. 'T' INDICATES TEMPERED GLASS. SEE SECTIONS FOR SHIM AND SEAL REQUIREMENTS.
- ⑧ RADIAL WALL SCOSCE, DOWNLIGHT ONLY, AVAILABLE THROUGH SECURITY LIGHTING. INSTALL PER MFG DIRECTIONS. SEE ROOF PLAN SHEET A-12 FOR MORE INFORMATION.
- ⑨ 45' R. ROOF CAP ELEMENT, BY OTHERS.
- ⑩ YELLOW STANDING SEAM METAL ROOF (COLOR TO MATCH AWNINGS)
- ⑪ PIPE BOLLARD - PAINTED YELLOW
- ⑫ McDONALD'S SIGNAGE BY OTHERS - UNDER SEPARATE PERMIT.
- ⑬ HIRAF LINEAR LED FACADE LIGHT AVAILABLE THROUGH SECURITY LIGHTING. INSTALLED ALONG COPING OF FRONT ARCADE, NORTH SIDE ENTRY ARCADE AND SOUTH SIDE HEARTH ELEMENT. INSTALL PER MFG DIRECTIONS. SEE ROOF PLAN SHEET A-12 FOR MORE INFORMATION.
- ⑭ HOLLOW METAL DOOR & FRAME. COLOR MATCH FIELD BRICK
- ⑮ ALUMINUM TRELLIS W/ TIEBACKS.
- ⑯ 2x8 ALUMINUM CLAD TRIM BOARD
- ⑰ 2X CEDAR PERGOLA PAINTED TO MATCH ACCENT BRICK COLOR.
- ⑱ 1x6 CEDAR GATES PAINTED TO MATCH COLOR OF ACCENT BRICK.

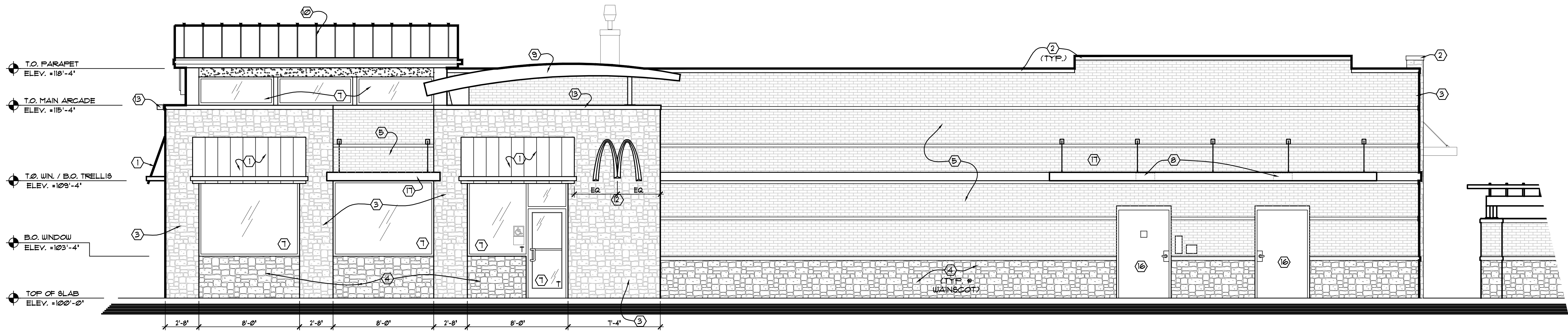
NOTE:

E.I.F.S. EXPANSION JOINTS PER MFG. THE FOLLOWING REQUIREMENTS ARE BASED ON DRYVIT MANUFACTURING STANDARDS. AS A MINIMUM, EXPANSION JOINTS SHALL BE PLACED AT THE FOLLOWING LOCATIONS:

- 1) WHERE EXPANSION JOINTS OCCUR IN THE SUBSTRATE SYSTEM.
- 2) WHERE BUILDING EXPANSION JOINTS OCCUR.
- 3) AT FLOOR LINES IN WOOD FRAME CONSTRUCTION.
- 4) AT FLOOR LINES OF NON-WOOD FRAMED BUILDINGS WHERE SIGNIFICANT MOVEMENT IS EXPECTED.
- 5) WHERE THE OUTSULATION PLUS SYSTEM ABUTS DISSIMILAR MATERIALS.
- 6) WHERE THE SUBSTRATE TYPE CHANGES.
- 7) WHERE PREFABRICATED PANELS ABUT ONE ANOTHER.
- 8) IN A CONTINUOUS ELEVATION AT INTERVALS NOT EXCEEDING 15 FEET.
- 9) WHERE SIGNIFICANT STRUCTURAL MOVEMENT OCCURS, SUCH AS CHANGES IN ROOFLINE, BUILDING SHAPE OR STRUCTURAL SYSTEM.



NON DRIVE-THRU SIDE ELEVATION
1/8" = 1'-0"



PARTIAL NON DRIVE-THRU SIDE ELEVATION
1/4" = 1'-0"



haag müller, inc.
Architecture • Engineering • Interiors

101 East Grand Avenue
Port Washington
Wisconsin 53074-2216

Telephone: (262) 268-1200
Facsimile: (262) 268-1250
www.haagmuller.com

COPYRIGHT 2010 © - All Rights Reserved

EXTERIOR ELEVATIONS
MC DONALD'S CORPORATION
2800 EAST WASHINGTON AVENUE
MADISON, WISCONSIN

REVISIONS		DESCRIPTION
NO.	DATE	UDC SUBMITTAL
1	4/5/11	UDC SUBMITTAL
2	5/10/11	UDC RESUBMITTAL

DATE: 5/10/2011
PROJ. NO: 1008197
DRAWN BY: SPS
SHEET

EAST WASHINGTON AVE



DATE

DESCRIPTION

R.A. Smith National
Beyond Surveying
and Engineering

10746 W. Bluemound Road, Brookfield WI 53005-5938
262-781-1000 Fax 262-781-8466, www.rasmithnational.com

**MCDONALDS - EAST WASHINGTON
MADISON, WI**

**PRELIMINARY
AERIAL-SITE PLAN**

© COPYRIGHT 2011
R.A. Smith National, Inc.
DATE: 5-09-11
SCALE: 1" = 30'
JOB NO. 3100177
PROJECT MANAGER:
RYAN J. LANCOUR, P.E.
DESIGNED BY: ---
CHECKED BY: ---

SHEET NUMBER
1 OF 1



43°06'08.09" N 89°20'44.48" W elev
© 2011 Google
© 2011 Europa Technologies



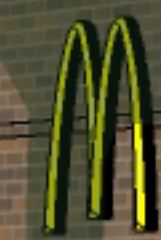




McDonald's

McDonald's

Welcome





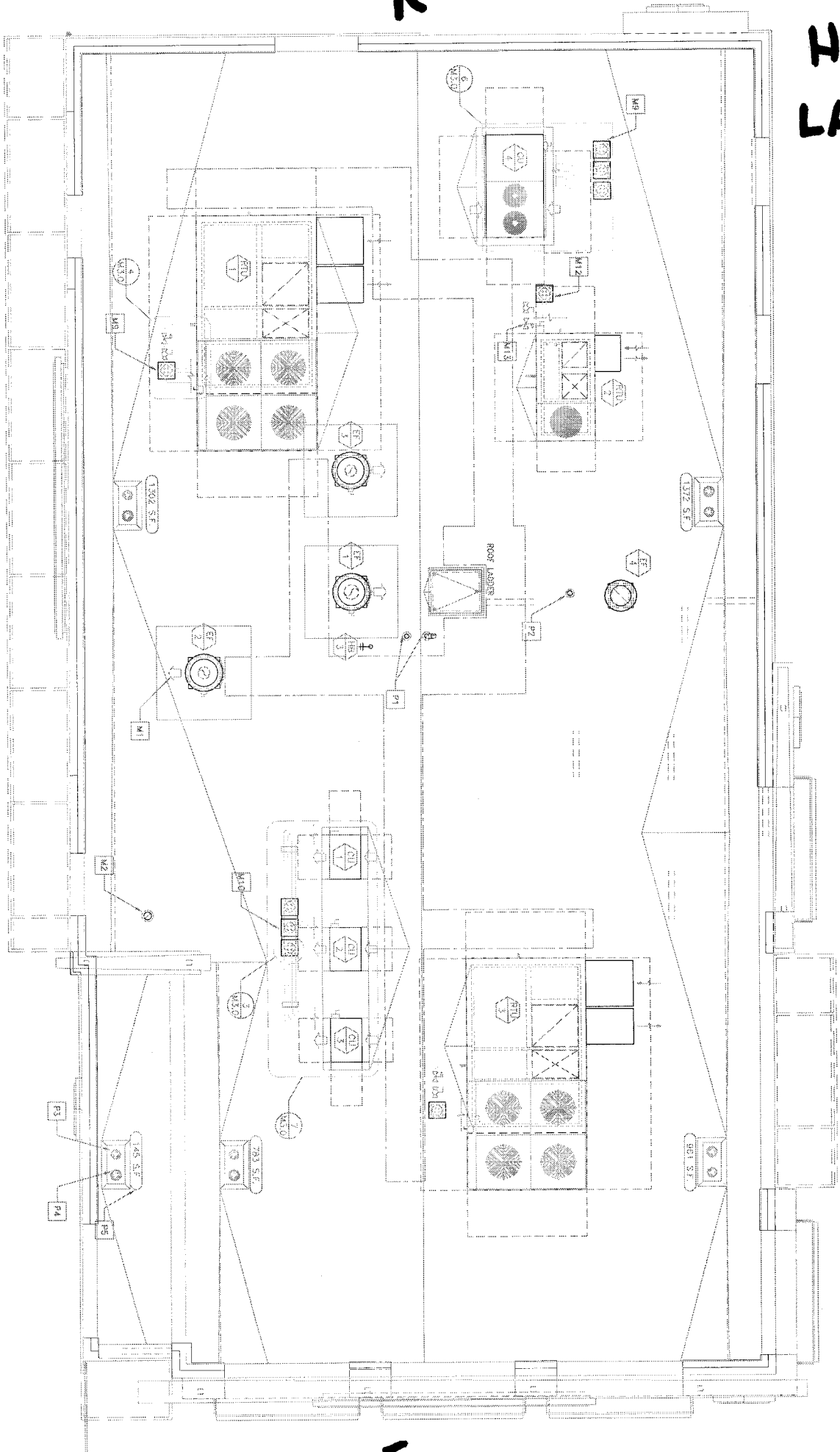
McDonald's



Welcome

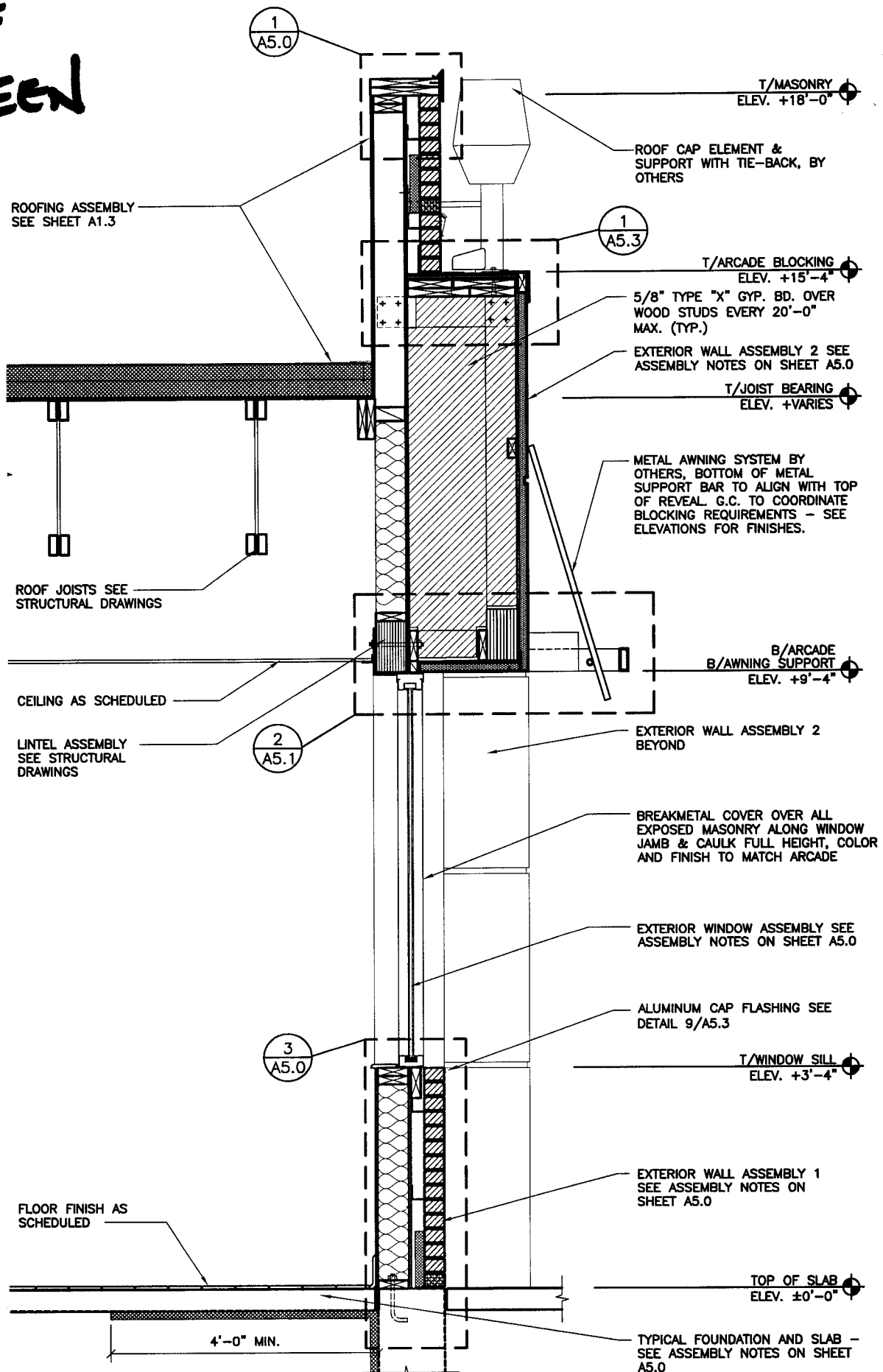
R

HVAC LAYOUT.



F

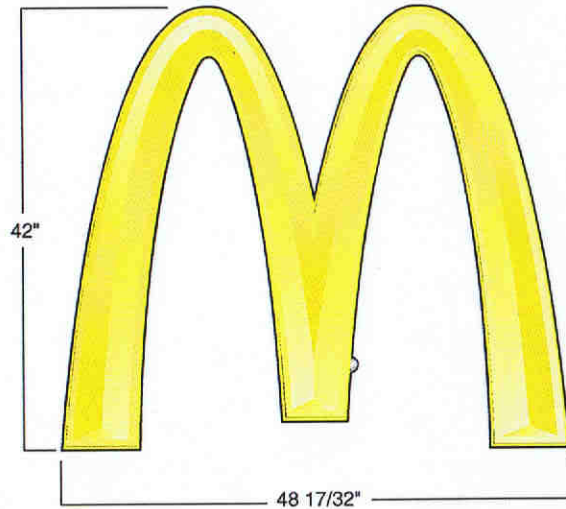
ROOF SCREEN



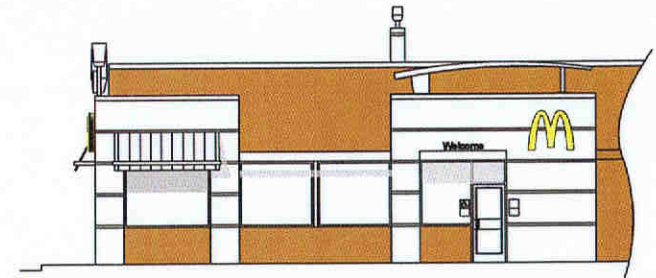
WALL SECTION - DINING

SPECIFICATIONS

- *Surface Mount, Fabricated Metal Housing*
- *Housing finish: Black*
- *Formed/Embossed Acrylic Faces*
- *H.O. Fluorescent Illumination*



Front Elevation



Right Elevation

48" BUILDING ARCH - New Construction

Actual Square Footage: 5.5

Account	McDonalds High Impact	Drawn By	B. Smith
Project Title	48" Logo Wall Arch	ImagePoint Rep.	Ann Baker
Scale	1:16	Approved By	
Date Created	24 Mar 04	Date Revised	14 Oct 05

ImagePoint.

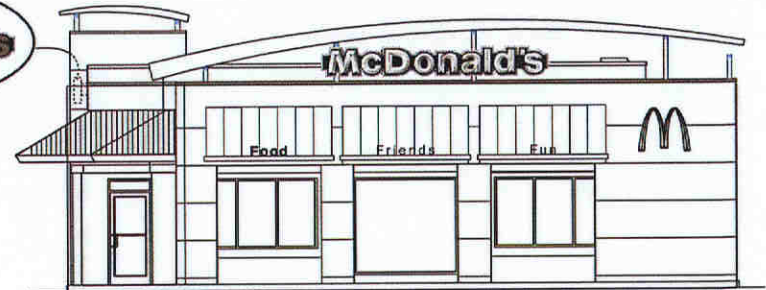
PO Box 59043
Knoxville, TN 37950-9043
1-800-444-7446
imagepoint.com

UNIBODY FASCIA ELEMENTS

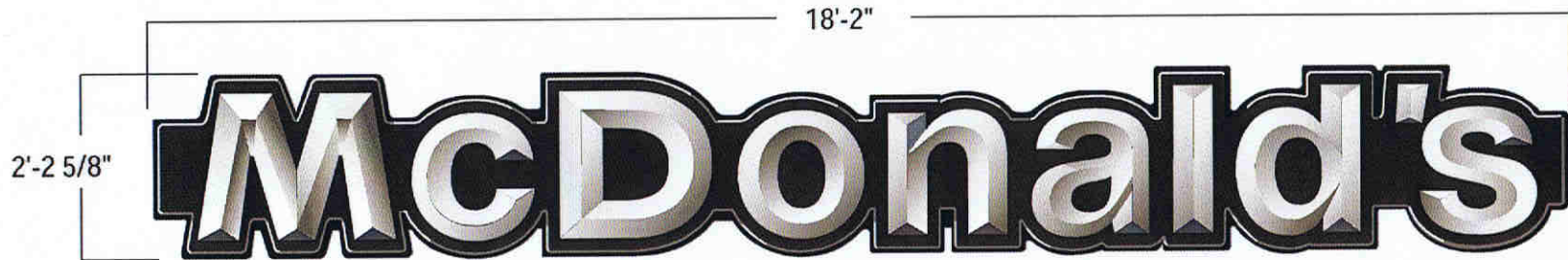
- Raceway Mount Formed Kydex Housing
- Formed Acrylic Faces
- H.O. Fluorescent Illumination
- Raceway Painted Grey



DT Side Elevation



Front Elevation



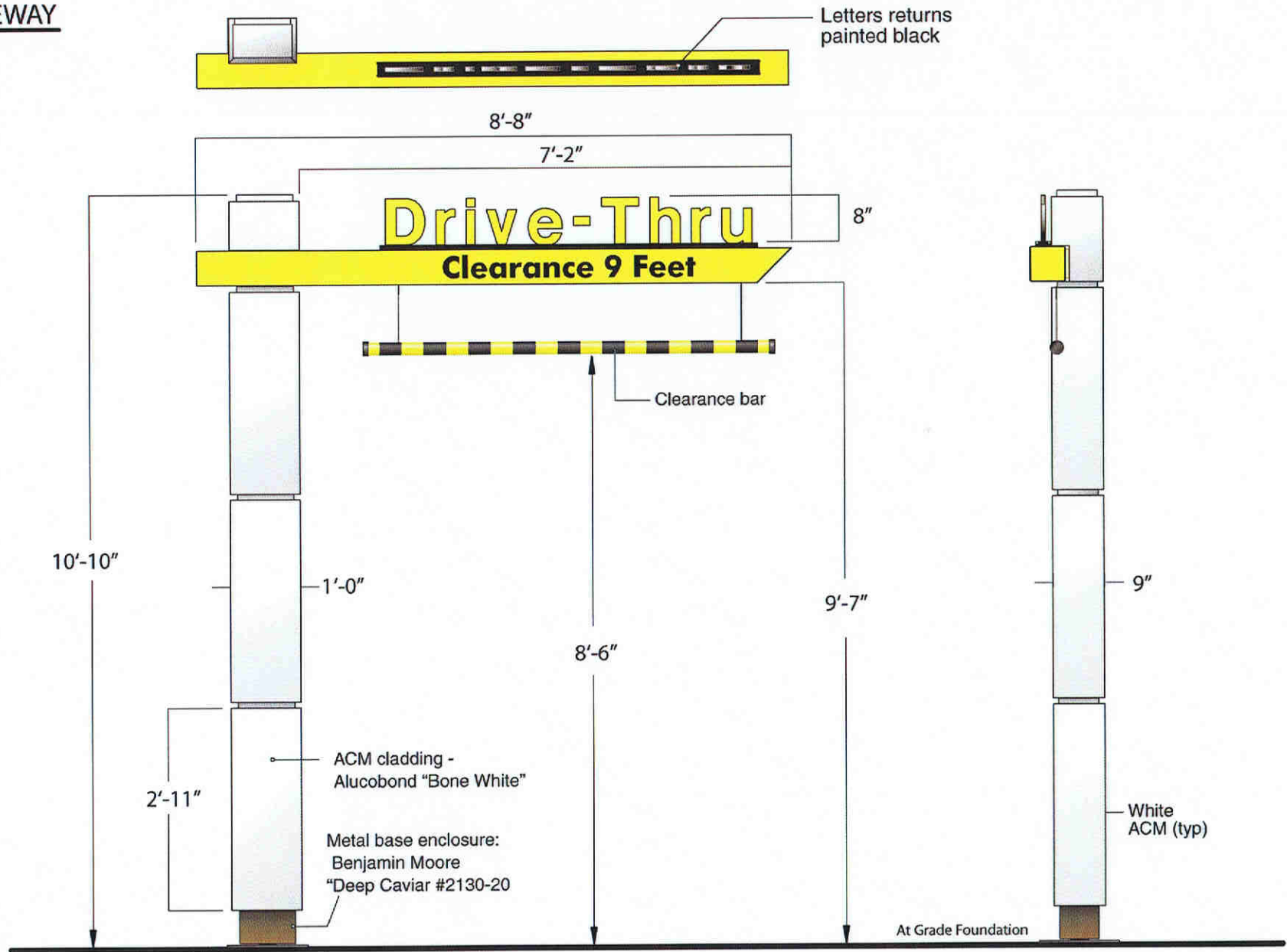
FRONT / DRIVE THRU UNIBODY ELEMENTS

Actual Square Footage: 31.32

Account	McDonalds High Impact	Drawn By	B. Smith
Project Title	Unibody Fascia Elements	IP Rep.	Ann Baker
Scale	nts	Approved By	
Date Created	24 Mar 04	Date Revised	2 July 04



GATEWAY

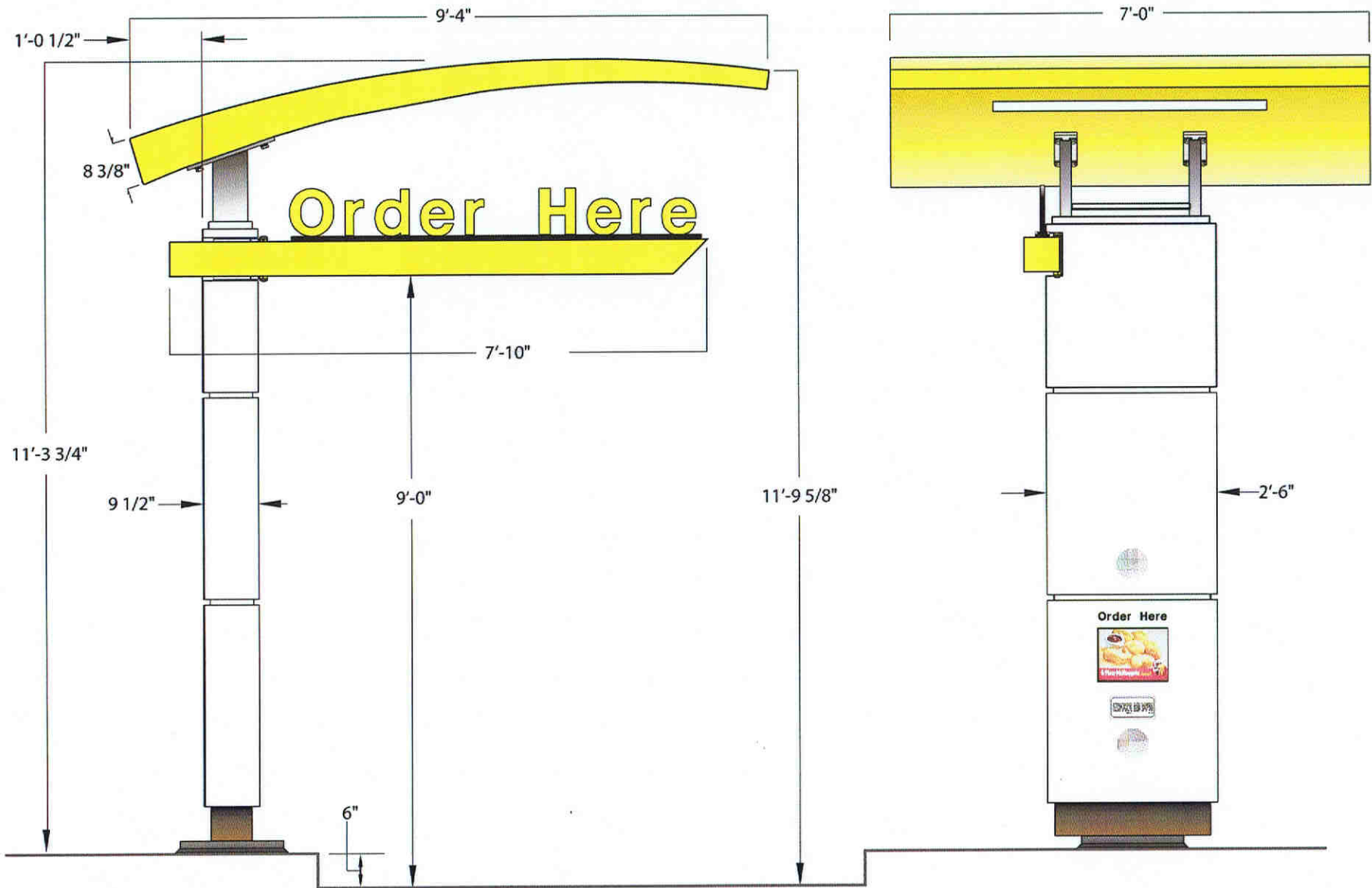


Account	McD High Impact	Drawn By	B. Smith
Project Title	Gateway/Clearance Bar	ImagePoint Rep.	Ann Baker
Scale	1:32	Approved By	
Date Created	20 Feb 06	Date Revised	27 Mar 07

ImagePoint.
 PO Box 56043
 Knoxville, TN 37950-9343
 1-800-444-7446
 www.imagepoint.com

DRIVE THRU CANOPY with Built In C.O.D.

C.O.D. Purchased Separately



Account	HIR McDonald's	Drawn By	B. Smith
Project Title	Drive Thru Canopy	ImagePoint Rep.	A. Baker
Scale	1:24	Approved By	
Date Created	9 Mar 07	Date Revised	27 Mar 07

All ideas, plans or arrangements indicated in this drawing are copyrighted and owned by ImagePoint and shall not be reproduced, used by or disclosed to any person, firm or corporation for any purpose whatsoever without written permission of ImagePoint.

ImagePoint.

PO Box 59043
 Knoxville, TN 37950-9043
 1-800-444-7446
 www.imagepoint.com