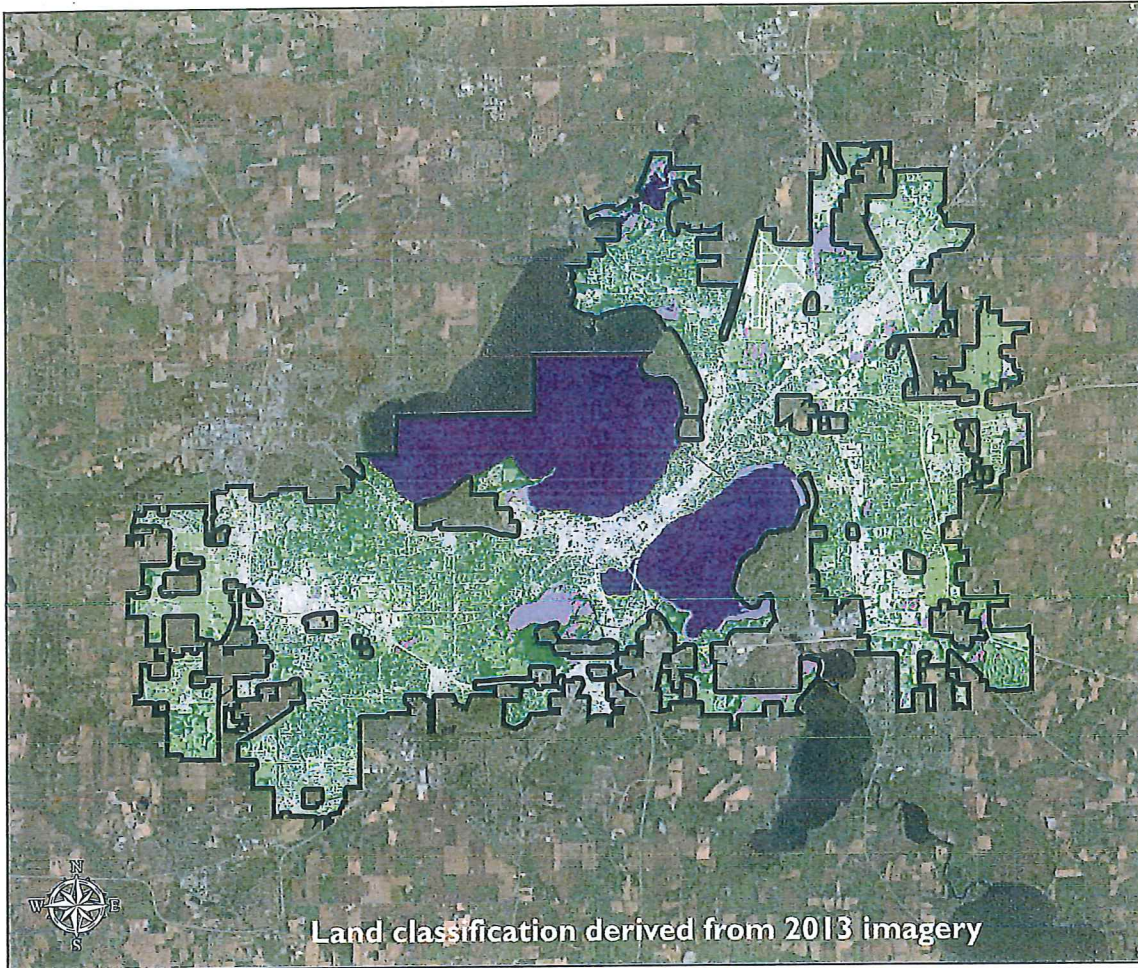
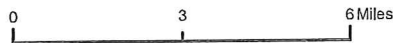


**COMMUNITY TREE CANOPY**



Land classification derived from 2013 imagery

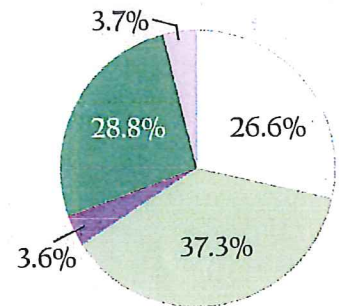


Total municipal area: 59575 acres (93.09 sq. miles)

**LAND COVER**

	<b>Tree / Shrub</b>	23.1%	13743 acres
	<b>Grass / Plantable</b>	27.7%	16520 acres
	<b>Impervious / Bare Soil</b>	28.5%	16977 acres
	<b>Wetland</b>	4.3%	2538 acres
	<b>Water</b>	16.4%	9797 acres
	<b>Municipal Borders</b>		

**STATE COVER**



**TREE CANOPY**

Many communities aspire to expand tree canopy because of the wide array of services trees offer. Knowing your canopy cover sets a baseline of knowledge to help promote your forest and set canopy goals.

Tree canopy maps also enable identification of underserved areas and areas of potential growth. They help prioritize where communities should focus tree planting activities in the future.

**ECO-BENEFITS**

Trees are part of a community's infrastructure, providing valuable benefits:

- Stormwater reduction**  
Prevent rain from burdening infrastructure
- Natural gas savings**  
Block wind, reducing winter heating costs
- Property value**  
Add real estate value
- Energy savings**  
Cool buildings, reducing air conditioning costs
- Air Quality**  
Remove pollutants and prevent power plant emissions
- Carbon sequestration**  
Capture and store CO<sub>2</sub>

**CANOPY DATA USES**

- **Prioritize tree planting locations**
- **Set tree canopy goals**
  - Establish your area of interest
  - Identify current tree canopy
  - Assess goal criteria
    - Compare canopy cover
    - Identify where canopy can be expanded
    - Consider budget, staff and time
- **Adopt goals based on assessments**
  - Protect and maintain existing trees
  - Plant new trees
  - Promote public awareness

**For more information on tree canopy, visit: [dnr.wi.gov/topic/UrbanForests/ufia](http://dnr.wi.gov/topic/UrbanForests/ufia)**

Classification was derived from 2013 National Agriculture Imagery Program flights. The imagery produced 1-m resolution pixels and the classification was pursued for all municipal and urban areas in Wisconsin. The information shown on these maps has been obtained from various sources, and is of varying age, reliability and resolution. These maps are not intended to be used for navigation, nor are these maps an authoritative source of information about legal land ownership or public access. Users of these maps should confirm the ownership of land through other means in order to avoid trespassing. No warranty, expressed or implied, is made regarding accuracy, applicability for a particular use, completeness, or legality of the information depicted on this map. For more information, see DNR Legal Notices.

