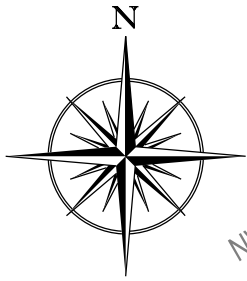


**EXHIBIT B
EASEMENT DESCRIPTION MAP**

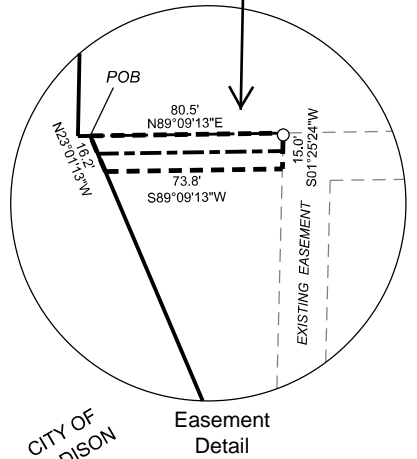


Subject City parcel located in Town of Middleton (no address assigned)

Subject Easement

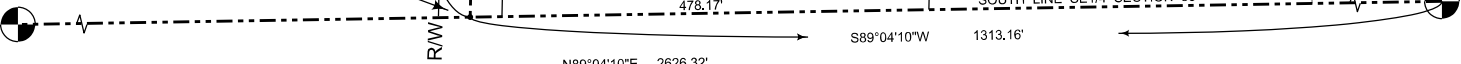
- 1" IRON PIPE
- POWER POLES
- OH — OVERHEAD ELECTRIC LINE

GRID NORTH
DANE COUNTY COORDINATE SYSTEM



S1/4 CORNER SECTION 35, T07N, R08E, CITY OF MADISON MON. FD.

SE CORNER SECTION 35, T07N, R08E, CITY OF MADISON PK NAIL FOUND



This drawing shall be used solely for easement description purposes and thus may only be relied upon for such purpose.

If this bar does not measure 1" then drawing is not to scale.
 0 50 100 200
 SCALE: 1" = 200'

CITY OF MADISON PARKS DIVISION 15' UG. ELECTRIC EASEMENT	
PART OF THE SE-SE, SEC. 35, T7N, R8E, TOWN OF MIDDLETON, DANE COUNTY, WI.	
Drawn: SJF	Date: 11/08/2018
Scale: 1" = 200'	SHEET 1 OF 1

File: X:\Office\Madison\Surveyor\Easements\Dane\Elver Park\Gammon Rd Easements\CITY of MADISON.dgn