

VIEW FROM BADGER ROAD





View from Intersection of South Park Street and West Badger Road Looking West



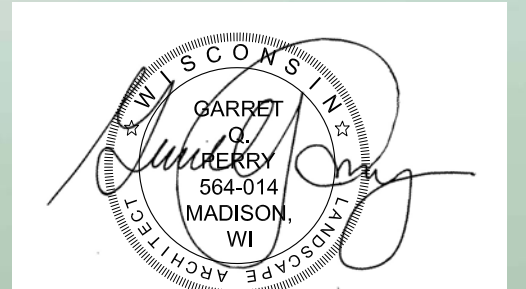
View from West Badger Road Looking West at Madison Fire Station #6



View from West Badger Road Looking East at Goodman South Campus Building

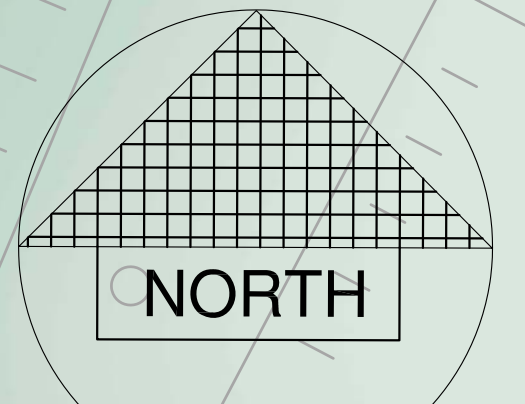


View from Intersection of Pertt Street and West Badger Road Looking East at Madison Fire Station #6



BADGER ROAD

PERRY STREET



0' 16' 32'
SCALE IN FEET

209 south water street milwaukee, wisconsin 53204 - 414 359 3060
205 north orange avenue suite 202 sarasota, florida 34236 - 608 240 6900
2310 crossroads drive suite 2000 madison, wisconsin 53718 - 941 348 3618
Intelligent design, inspired results. www.parcob.com

pr
PLUNKETT RAYSICH
ARCHITECTS, LLP

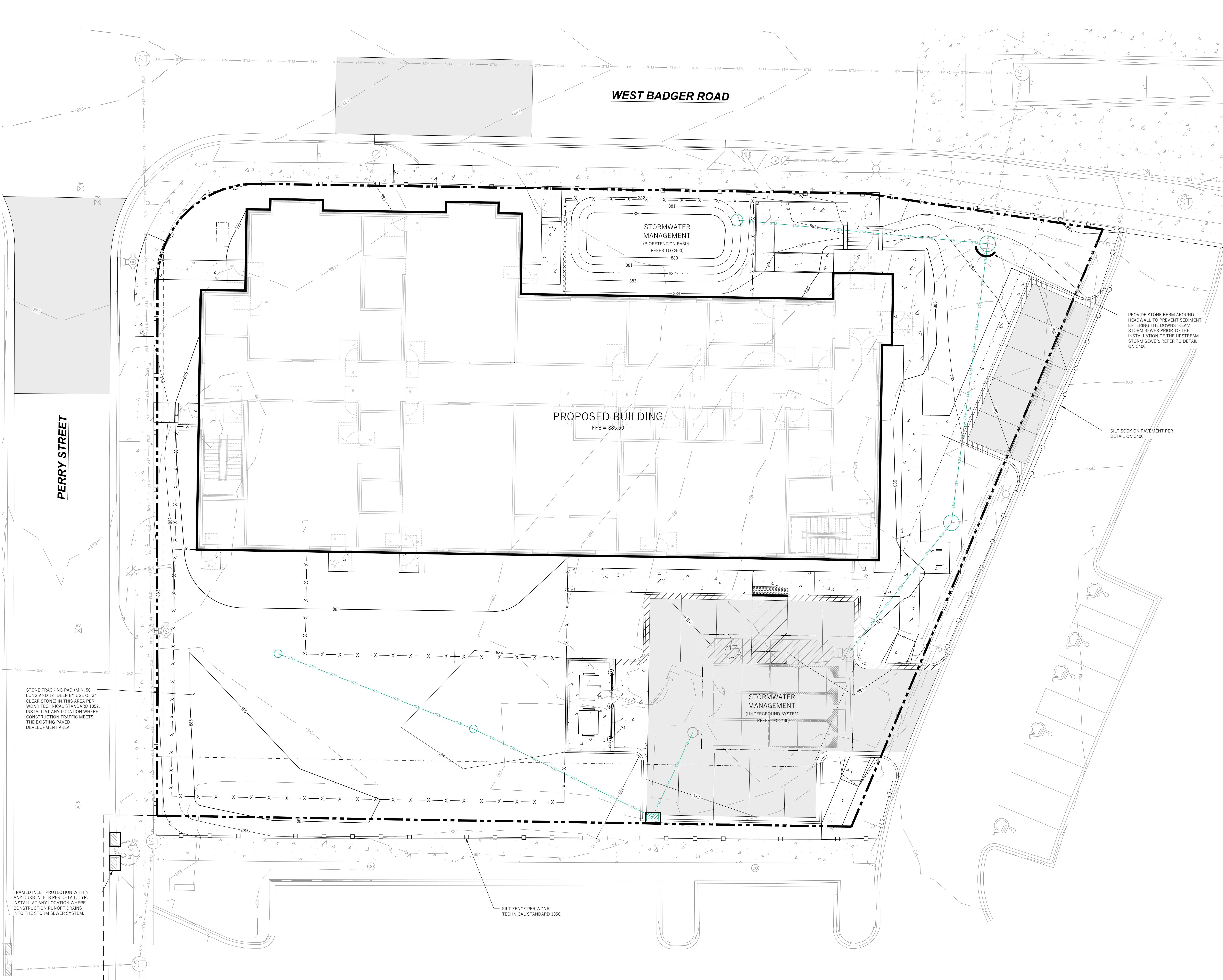
etc
design studio

Madison College - Goodman South Campus
Early Learning Campus Childcare
2429 Perry Street, Madison, Wisconsin 53713

REVISIONS:

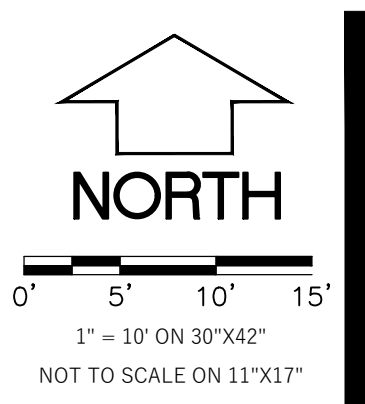
COLOR SITE PLAN

UDC FINAL
BID PACKAGE:
DATE: 24 MAR 19
JOB NO: 23_MATC_02
SHEET NO:
L-100



LEGEND (PROPOSED)

- PROPERTY BOUNDARY
- EASEMENT
- BUILDING FOOTPRINT
- 18" CURB AND GUTTER
- ASPHALT PAVEMENT
- CONCRETE PAVEMENT
- PROPOSED MAJOR CONTOUR
- 885
- 884
- PROPOSED MINOR CONTOUR
- PROPOSED STORM SEWER
- SILT FENCE
- SILT SOCK
- INLET PROTECTION
- DITCH CHECK



209 South Water Street, Milwaukee, Wisconsin 53204 414.333.3600
2310 Cass Street, Suite 200B, Madison, Wisconsin 53706 608.261.8800
1000 University Avenue, Madison, Wisconsin 53706 608.261.8800
311 Canyon View Drive, Lake View 58103 1372.949.9277

pr PLUNKETT RAYSCH ARCHITECTS, LLP

WYSER ENGINEERING

MADISON AREA TECHNICAL COLLEGE

Madison College
Goodman South Early Learning Campus
2429 Perry Street, Madison, WI 53713

REVISIONS:

NOT FOR CONSTRUCTION
© 2024 PLUNKETT RAYSCH ARCHITECTS, LLP

CITY SUBMITTAL
BID PACKAGE:
DATE: 02/19/2024
JOB NO: 220024-03
SHEET NO:

C200

GRADING & EROSION CONTROL PLAN

GENERAL NOTES

1. UNDERLYING SITE CONTOURS AND INFORMATION BASED ON TOPOGRAPHIC & UTILITY DATA AS SURVEYED BY WYSER ENGINEERING ON NOVEMBER 27 AND 29, 2023. WYSER ENGINEERING SHALL NOT BE HELD RESPONSIBLE FOR ANY ERRORS OR OMISSIONS THAT MAY ARISE AS A RESULT OF ERRONEOUS OR INCOMPLETE INFORMATION PROVIDED BY OTHERS. CONTRACTOR TO CONFIRM ALL ELEVATIONS, GENERAL DRAINAGE AND EARTHWORK REQUIREMENTS PRIOR TO CONSTRUCTION.
2. THE BENCHMARK LOCATIONS ARE SHOWN FOR REFERENCE ONLY ON THIS PLAN. THE BENCHMARKS SHALL BE VALIDATED BY LICENSED LAND SURVEYOR PRIOR TO CONSTRUCTION. CONTRACTOR ASSUMES RISK ASSOCIATED WITH BENCHMARK ELEVATIONS UNTIL CONFIRMED.
3. CONTRACTOR TO OBTAIN APPROPRIATE PERMITS FOR STREET OPENINGS & TO WORK WITHIN THE CITY'S LAND IF REQUIRED.
4. WYSER ENGINEERING SHALL BE HELD HARMLESS AND DOES NOT WARRANT ANY DEVIATIONS BY THE OWNER OR CONTRACTOR FROM THE APPROVED CONSTRUCTION PLANS THAT MAY RESULT IN DISCIPLINARY ACTIONS BY REGULATORY AGENCIES.
5. IF ANY ERRORS, DISCREPANCIES, OR OMISSIONS WITHIN THE PLAN BECOME APPARENT, IT SHALL BE BROUGHT TO THE ATTENTION OF THE ENGINEER PRIOR TO CONSTRUCTION SO THAT CLARIFICATION OR REVISION MAY OCCUR.
6. ALL MUNICIPAL UTILITY CONNECTIONS, WORK IN ROW, PUBLIC OUTLOTS AND PUBLIC EASEMENTS SHALL BE IN ACCORDANCE WITH CITY OF MADISON STANDARD SPECIFICATIONS FOR PUBLIC WORKS CONSTRUCTION.

CONSTRUCTION SITE EROSION CONTROL REQUIREMENTS

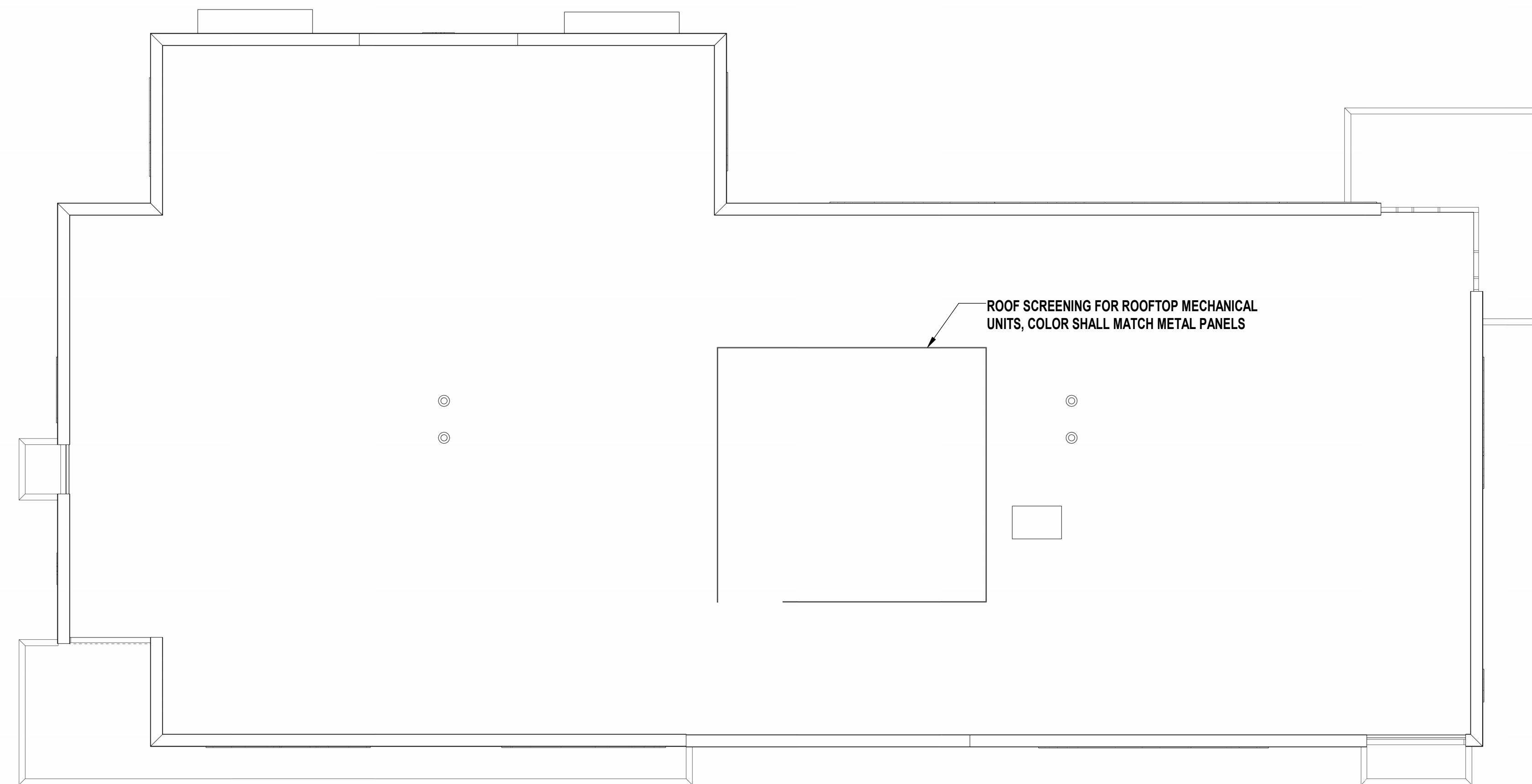
1. POST WDRN CERTIFICATE OF PERMIT COVERAGE AND MUNICIPAL EROSION CONTROL PERMITS ON SITE AND MAINTAIN UNTIL CONSTRUCTION ACTIVITIES HAVE CEASED. THE SITE IS STABILIZED, AND A NOTICE OF TERMINATION IS FILED WITH WDRN.
2. KEEP A COPY OF THE CURRENT EROSION CONTROL PLAN ON SITE THROUGHOUT THE DURATION OF THE PROJECT.
3. ENGINEER / CITY OF MADISON / WDRN HAS THE RIGHT TO REQUIRE CONTRACTOR TO IMPLEMENT ADDITIONAL EROSION CONTROL MEASURES AS NECESSARY.
4. SUBMIT PLAN REVISIONS OR AMENDMENTS TO THE WDRN AT LEAST 5 DAYS PRIOR TO FIELD IMPLEMENTATION.
5. THE SITE CONTRACTOR IS RESPONSIBLE FOR ROUTINE SITE INSPECTIONS AT LEAST ONCE EVERY 7 DAYS AND WITHIN 24 HOURS AFTER A RAINFALL EVENT OF 0.5 INCHES OR GREATER. KEEP INSPECTION REPORTS ON-SITE AND MAKE THEM AVAILABLE UPON REQUEST.
6. INSPECT AND MAINTAIN ALL INSTALLED EROSION CONTROL PRACTICES UNTIL THE CONTRIBUTING DRAINAGE AREA HAS BEEN STABILIZED.
7. WHEN POSSIBLE, PRESERVE EXISTING VEGETATION (ESPECIALLY ADJACENT TO SURFACE WATERS), MINIMIZE LAND-DISTURBING CONSTRUCTION ACTIVITY ON SLOPES OF 20% OR MORE, MINIMIZE SOIL COMPACTION, AND PRESERVE TOPSOIL.
8. REFER TO THE WDRN STORMWATER CONSTRUCTION TECHNICAL STANDARDS AT http://dnr.wi.gov/topic/stormwater/standards/const_standards.html
9. INSTALL PERIMETER EROSION CONTROLS AND ROCK TRACKING PAD CONSTRUCTION ENTRANCES) PRIOR TO ANY LAND-DISTURBING ACTIVITIES, INCLUDING CLEARING AND GRUBBING. USE WDRN TECHNICAL STANDARD STONE TRACKING PAD AND THE WASHING KIOSK FOR ROCK TRACKING FOR CONSTRUCTION ENTRANCES.
10. INSTALL INLET PROTECTION PRIOR TO LAND-DISTURBING ACTIVITIES IN THE CONTRIBUTING DRAINAGE AREA AND/OR IMMEDIATELY UPON INLET INSTALLATION. COMPLY WITH WDRN TECHNICAL STANDARD STORM DRAIN INLET PROTECTION FOR CONSTRUCTION SITES #1006 AND DANE COUNTY REQUIREMENTS FOR FRAMED INLET PROTECTION.
11. CONTRACTOR TO PROVIDE SOLID LID OR METAL PLATE ON ALL OPEN MANHOLES DURING CONSTRUCTION TO MINIMIZE SEDIMENT FROM ENTERING THE STORM SEWER SYSTEM.
12. STAGE CONSTRUCTION GRADING ACTIVITIES TO MINIMIZE THE CUMULATIVE EXPOSED AREA. CONDUCT TEMPORARY GRADING FOR EROSION CONTROL PER WDRN TECHNICAL STANDARD TEMPORARY GRADING PRACTICES FOR EROSION CONTROL #1067.
13. PERMITTING OF GROUNDWATER DEWATERING IS THE RESPONSIBILITY OF THE CONTRACTOR. GROUNDWATER DEWATERING IS SUBJECT TO A DNR WASTEWATER DISCHARGE PERMIT AND A DNR HIGH CAPACITY WELL APPROVAL IF CUMULATIVE PUMP CAPACITY IS 70 GPM OR MORE.
14. PROVIDE ANTI-SLOUR PROTECTION AND MAINTAIN NON-EROSIVE FLOW DURING DEWATERING. PERFORM DEWATERING OF ACCUMULATED SURFACE RUNOFF IN ACCORDANCE WITH WDRN TECHNICAL STANDARD DE-WATERING #1061.
15. CONSTRUCT AND PROTECT THE BIOMITIGATION BASIN AND VEGETATION FROM RUNOFF AND SEDIMENT DURING CONSTRUCTION. REFERENCE THE WDRN TECHNICAL STANDARD BIOTENTION FOR INFILTRATION # 1004.
16. INSTALL AND MAINTAIN SILT FENCES PER WDRN TECHNICAL STANDARD SILT FENCE #1036. REMOVE SEDIMENT FROM BEHIND SILT FENCES AND SEDIMENT BARRIERS BEFORE SEDIMENT REACHES A DEPTH THAT IS EQUAL TO ONE-HALF OF THE FENCE AND/OR BARRIER HEIGHT.
17. REPAIR BREAKS AND GAPS IN SILT FENCES AND BARRIERS IMMEDIATELY. REPLACE DECOMPOSING STRAW BALES (TYPICAL BALE LIFE IS 3 MONTHS). LOCATE, INSTALL, AND MAINTAIN STRAW BALES PER WDRN TECHNICAL STANDARD DITCH CHECKS #1062.
18. INSTALL AND MAINTAIN FILTER SOCKS IN ACCORDANCE WITH WDRN TECHNICAL STANDARD INTERIM MANUFACTURED PERIMETER CONTROL AND SLOPE INTERRUPTION PRODUCTS # 1071.
19. IMMEDIATELY STABILIZE STOCKPILES AND SURROUND STOCKPILES AS NEEDED WITH SILT FENCE OR OTHER PERIMETER CONTROL IF STOCKPILES WILL REMAIN INACTIVE FOR 7 DAYS OR LONGER.
20. IMMEDIATELY STABILIZE ALL DISTURBED AREAS THAT WILL REMAIN INACTIVE FOR 14 DAYS OR LONGER. BETWEEN SEPTEMBER 15 AND OCTOBER 15, STABILIZE WITH MULCH, TACKLER, AND A PERENNIAL SEED MIX WITH WINTER WHEAT, ANNUAL OATS, OR ANNUAL RYE, AS APPROPRIATE FOR REGION AND SOIL TYPE. OCTOBER 15 THROUGH COLD WEATHER, STABILIZE WITH A POLYMER AND DOMINANT SEED MIX, AS APPROPRIATE FOR REGION AND SOIL TYPE.
21. STABILIZE AREAS OF FINAL GRADING WITHIN 7 DAYS OF REACHING FINAL GRADE.
22. SWEEP/CLEAN UP ALL SEDIMENT/TRASH THAT MOVES OFF-SITE DUE TO CONSTRUCTION ACTIVITY OR STORM EVENTS BEFORE THE END OF THE SAME WORKDAY OR AS DIRECTED BY THE AUTHORITIES WITH JURISDICTION. SEPARATE SWEEP MATERIALS (SOILS AND TRASH) AND DISPOSE OF APPROPRIATELY.
23. THE CONTRACTOR IS RESPONSIBLE FOR CONTROLLING DUST PER WDRN TECHNICAL STANDARD DUST CONTROL ON CONSTRUCTION SITES # 1068.
24. PROPERLY DISPOSE OF ALL WASTE AND UNUSED BUILDING MATERIALS (INCLUDING GARBAGE, DEBRIS, CLEANING WASTES, OR OTHER CONSTRUCTION MATERIALS) AND DO NOT ALLOW THESE MATERIALS TO BE CARRIED BY RUNOFF INTO THE RECEIVING CHANNEL.
25. COORDINATE WITH THE AUTHORITIES WITH JURISDICTION TO UPDATE THE LAND DISTURBANCE PERMIT TO INDICATE THE ANTICIPATED OR LIKELY DISPOSAL LOCATIONS FOR ANY EXCAVATED SOILS OR CONSTRUCTION DEBRIS THAT WILL BE HAILED OFF-SITE FOR DISPOSAL. THE DEPOSITED OR STOCKPILED MATERIAL NEEDS TO INCLUDE PERIMETER SEDIMENT CONTROL MEASURES (SUCH AS SILT FENCE, MULCH BARRIERS, FILTER SOCKS, OR COMPACTED EARTHWORK BARRIERS).
26. FOR NON-CHANNELIZED FLOW ON DISTURBED OR CONSTRUCTED SLOPES, PROVIDE URBAN TYPE B EROSION CONTROL MATTING. INSTALL AND MAINTAIN PER WDRN TECHNICAL STANDARD NON-CHANNEL EROSION MAT #1062.
27. FOR CHANNELIZED FLOW ON DISTURBED OR CONSTRUCTED AREAS, PROVIDE CLASS II TYPE B EROSION CONTROL MATTING UNLESS OTHERWISE SPECIFIED ON THE PLAN. INSTALL AND MAINTAIN PER WDRN TECHNICAL STANDARD CHANNEL EROSION MAT #1063.
28. MAKE PROVISIONS FOR WATERING DURING THE FIRST 8 WEEKS FOLLOWING SEEDING OR PLANTING OF DISTURBED AREAS WHENEVER MORE THAN 7 CONSECUTIVE DAYS OF DRY WEATHER OCCUR.
29. THE CONTRACTOR IS RESPONSIBLE FOR COMPLYING WITH ALL APPLICABLE WDRN REMEDIATION AND WASTE MANAGEMENT REQUIREMENTS FOR HANDLING AND DISPOSING OF CONTAMINATED MATERIALS. SITE-SPECIFIC INFORMATION FOR AREAS WITH KNOWN OR SUSPECTED SOIL AND/OR GROUNDWATER CONTAMINATION CAN BE FOUND ON WDRN'S BUREAU OF REMEDIATION AND REDEVELOPMENT TRACKING SYSTEM (BRRS) PUBLIC DATABASE AT: <http://dnr.wi.gov/brrs/>
30. INSTALL AND MAINTAIN A CONCRETE WASHOUT BASIN PER EPA 833-F-11-006: <https://www.epa.gov/npdes/pubs/concretestwashout.pdf>. REQUIRE USE BY ALL CONCRETE CONTRACTORS. LIQUID MAY BE REUSED IN CONCRETE MIXING, EVAPORATED, OR DISPOSED OF AS WASTEWATER.

GRADING, SEEDING & RESTORATION NOTES

1. ALL GRADES SHOWN ARE FINAL FINISHED SURFACE GRADES.
2. AREAS TO BE SEEDED SHALL HAVE A MINIMUM 6 INCHES TOPSOIL UNLESS OTHERWISE NOTED.
3. AREAS NOT RESTORED WITH EROSION MATTING OR OTHER STABILIZATION MEASURES SHALL BE STABILIZED WITH MULCH.
4. APPLY ANIONIC POLYMER TO DISTURBED AREAS IF EROSION BECOMES PROBLEMATIC.
5. CONTRACTOR SHALL CHISEL-PLOW OR DEEP TILL WITH DOUBLE TINES THE STORMWATER MANAGEMENT FACILITY JUST PRIOR TO SEEDING AND MULCHING FOR INFILTRATION.
6. MULCH SHALL BE WEED-FREE STRAW AND SHALL BE INSTALLED AT THE RATE OF 2 TONS PER ACRE PER SECTION 627 OF "STANDARD SPECIFICATIONS FOR HIGHWAY AND STRUCTURE CONSTRUCTION" (WISDOT 2014)
7. PERMANENT SEEDING SHALL NOT OCCUR BETWEEN SEPTEMBER 15TH AND APRIL 15TH. ALTERNATE SEEDING/PLANTING METHODS AND/OR EROSION PROTECTION MAY BE NECESSARY FOR SEEDING/PLANTING THAT OCCURS DURING THAT TIME. COORDINATE WITH THE OWNER AS NECESSARY.
8. TEMPORARY STABILIZATION SHALL CONSIST OF ONE OR MORE OF THE FOLLOWING OPTIONS:
 - a. TEMPORARY SEEDING CONSISTING OF ANNUAL RYE GRASS APPLIED AT A RATE OF 1.5 LBS PER 1000 SQUARE FEET.
 - b. WISDOT PAL CLASS I TYPE B URBAN EROSION CONTROL MAT.



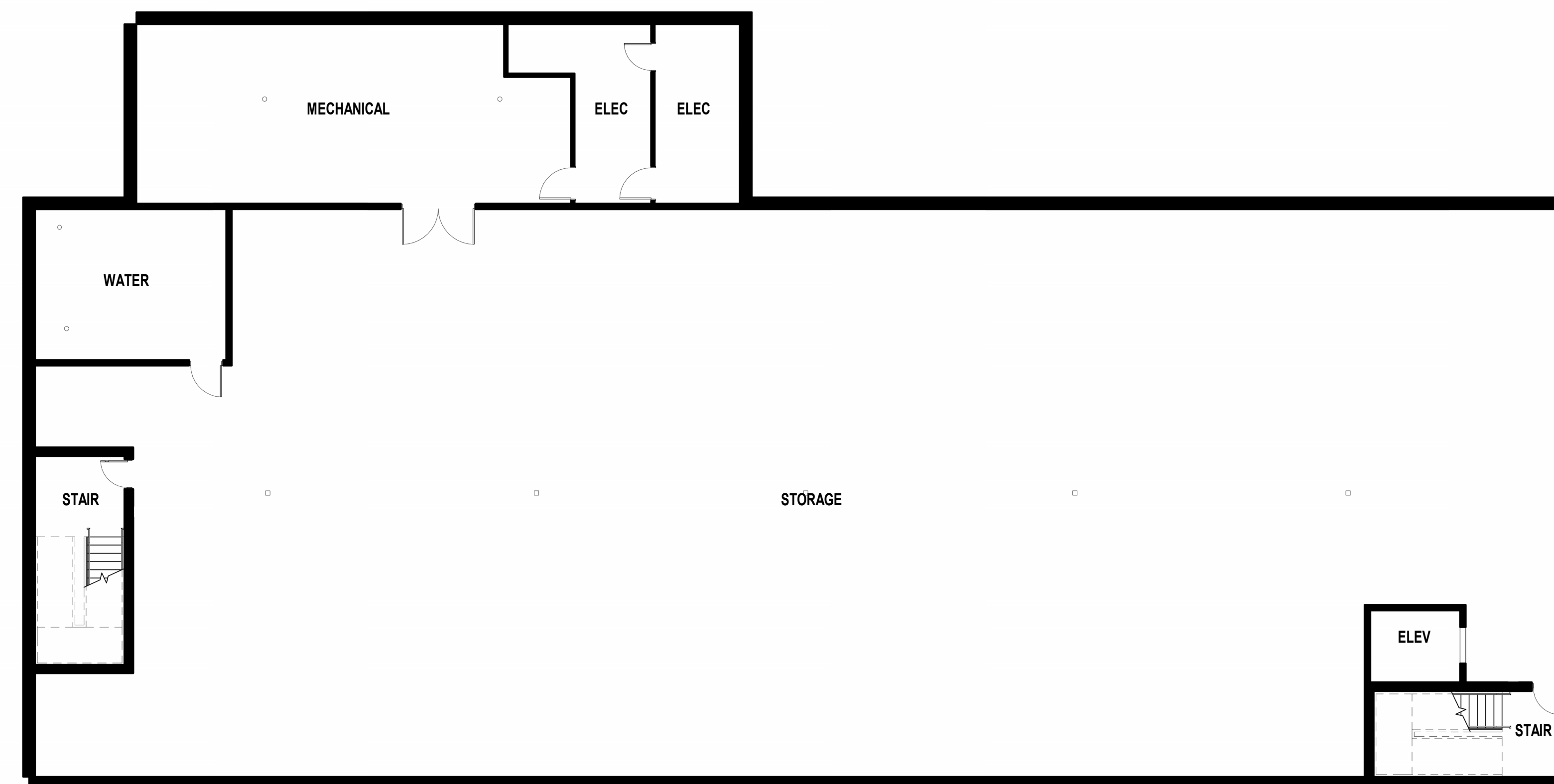
SECOND FLOOR OVERALL PLAN



ROOF OVERALL PLAN

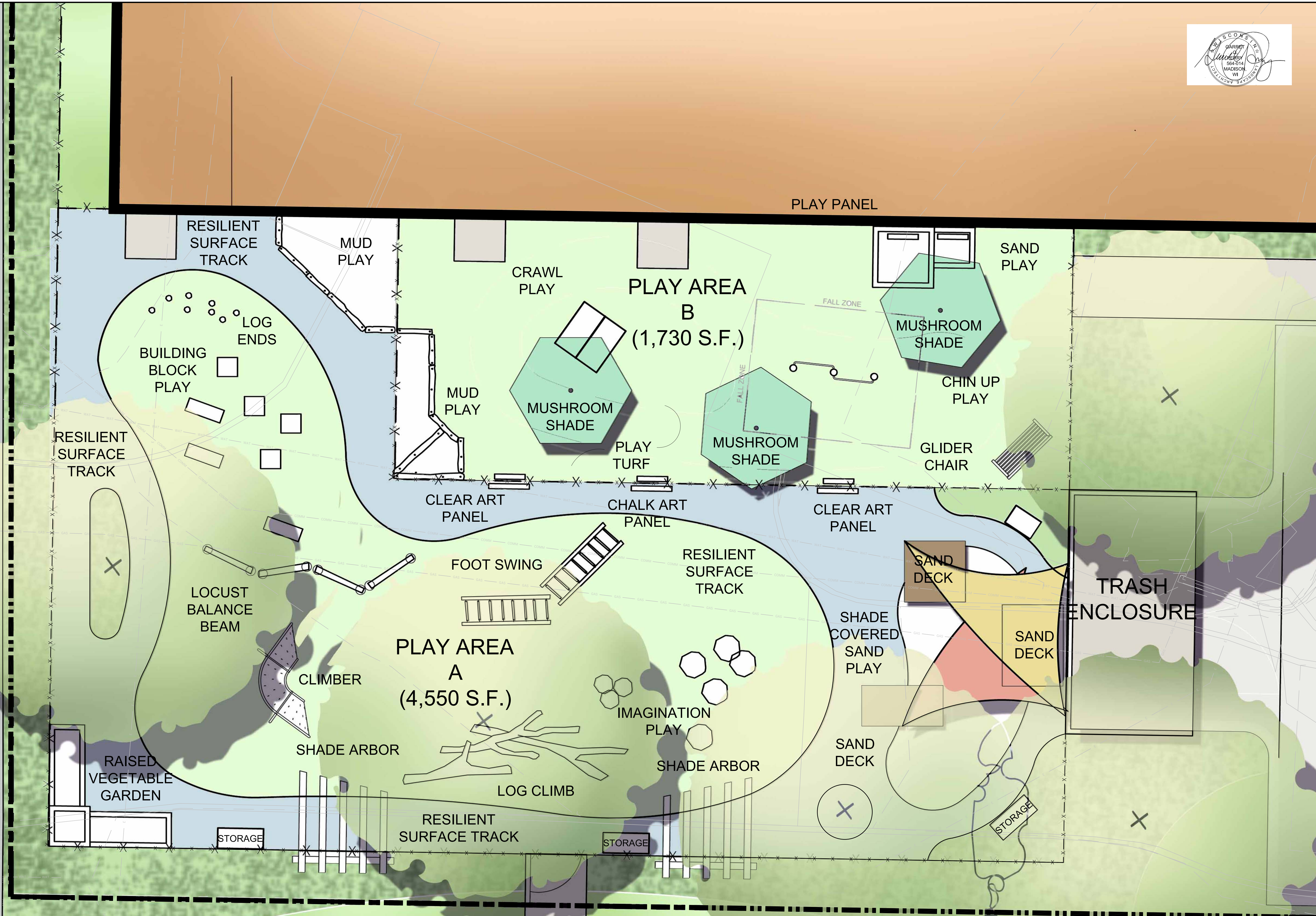
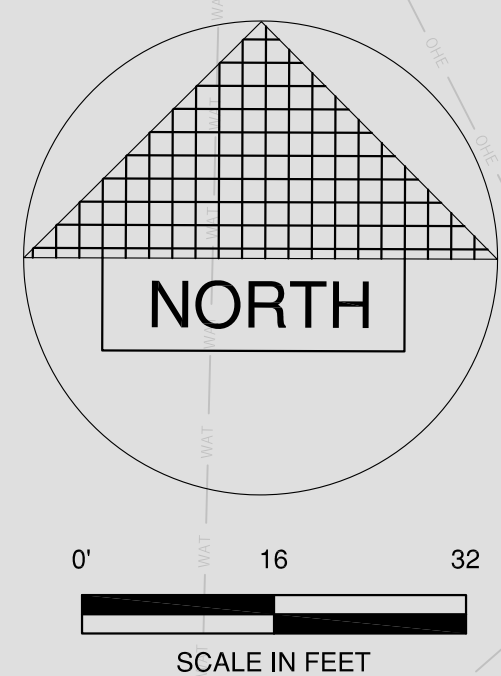


FIRST FLOOR OVERALL PLAN



LOWER LEVEL OVERALL PLAN

0 3 5 11 21
 SCALE: 3/32" = 1'-0"



209 south water street milwaukee, wisconsin 53204 - 414 359 3060
 205 north orange avenue suite 202 sarasota, florida 34236 - 688 240 6900
 2310 crossroads drive suite 2000 madison, wisconsin 53718 - 941 548 3618
 intelligent design, inspired results. www.parcob.com

prad
 PLUNKETT RAYSICH
 ARCHITECTS, LLP

etc
 design studio

Madison College - Goodman South Campus
 Early Learning Campus Childcare
 2429 Perry Street, Madison, Wisconsin 53713

REVISIONS:

PLAY ENLARGEMENT

UDC FINAL
 BID PACKAGE:
 DATE: 24 MAR 19
 JOB NO: 23_MATC_02
 SHEET NO:
L-102



209 south water street milwaukee, wisconsin 53204 - 414 359 3060
205 north orange avenue suite 202 sarasota, florida 34236 - 688 240 6900
2310 crossroads drive suite 2000 madison, wisconsin 53718 - 941 348 3618
Intelligent design, inspired results. www.garopp.com

pran PLUNKETT RAYSICH ARCHITECTS, LLP

etc design studio

Madison College - Goodman South Campus
Early Learning Campus Childcare
2429 Perry Street, Madison, Wisconsin 53713

NOT FOR CONSTRUCTION FOR REFERENCE ONLY
PLAY IMAGES
UDC FINAL
BID PACKAGE:
DATE: 24 MAR 07
JOB NO: 23_MATC_02
SHEET NO:
L-103.2



© 2017 Plunkett Raysich Architects, LLP - All rights reserved.













OVERALL EAST ELEVATION
SCALE: 1/8" = 1'-0"



OVERALL WEST ELEVATION
SCALE: 1/8" = 1'-0"



CANOPY, METAL FASCIA
 AND SOFFIT, COLOR SHALL
 MATCH METAL WALL PANEL



TYPICAL BUILDING SIGNAGE, TO
 BE DETERMINED AT A LATER DATE



METAL WALL PANEL, COLOR SHALL BE CLEAR ANODIZED AS
 MANUFACTURED BY ALPOLIC MATERIALS



ALUMINUM STOREFRONT, COLOR
 SHALL BE CLEAR ANODIZED AS
 MANUFACTURED BY KAWNEER

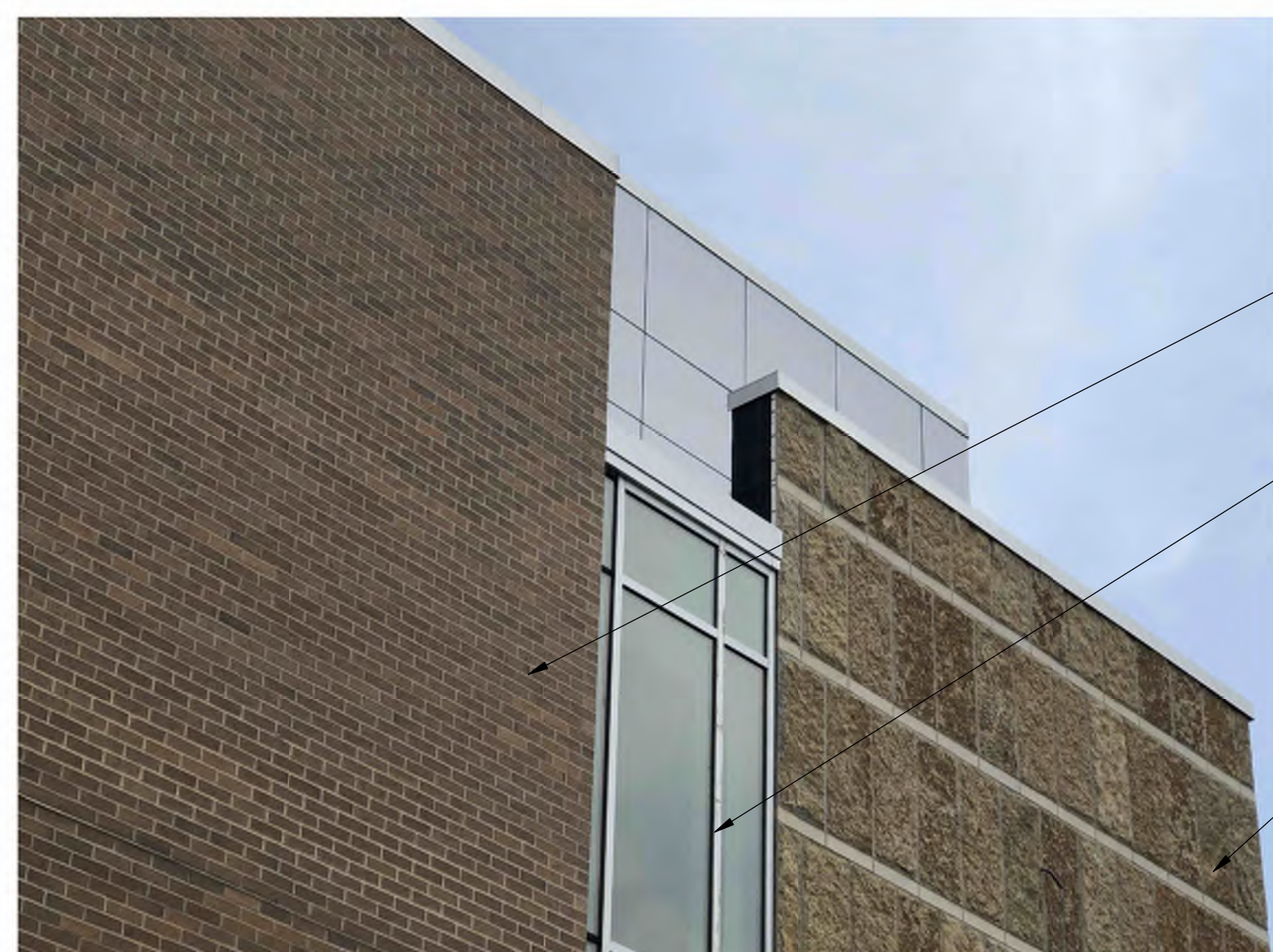
PRECAST STONE SILL AND
 LINTEL, COLOR SHALL BE BUFF



BRICK VENEER, COLOR SHALL BE SIOUX CITY, TOASTED FINE
 ART VELOUR, MODULAR



STONE VENEER, MAIN PANELS SHALL BE LIMESTONE WITH A
 BED FACE FINISH, COLOR SHALL BE PRAIRIE BUFF/GOLD,
 NOMINAL SIZE 3'-8" HIGH BY 1'-8" WIDE. ACCENT PANELS
 SHALL BE LIMESTONE WITH A HONED FINISH, COLOR SHALL BE
 AURORA BUFF, NOMINAL SIZE 4" HIGH BY 1'-8" WIDE AS
 MANUFACTURED BY QUARRA STONE COMPANY



BRICK VENEER

ALUMINUM CURTAIN WALL,
 COLOR SHALL BE CLEAR
 ANODIZED AS MANUFACTURED
 BY KAWNEER

STONE VENEER