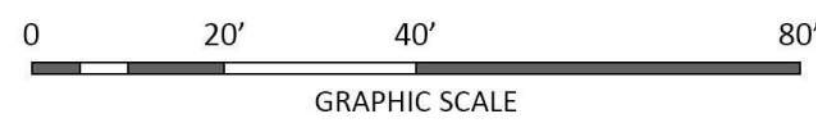


Site Locator Map

Redevelopment
2450 E. Washington Ave., Madison

UDC PRESENTATION | 2024.10.07 | 2422





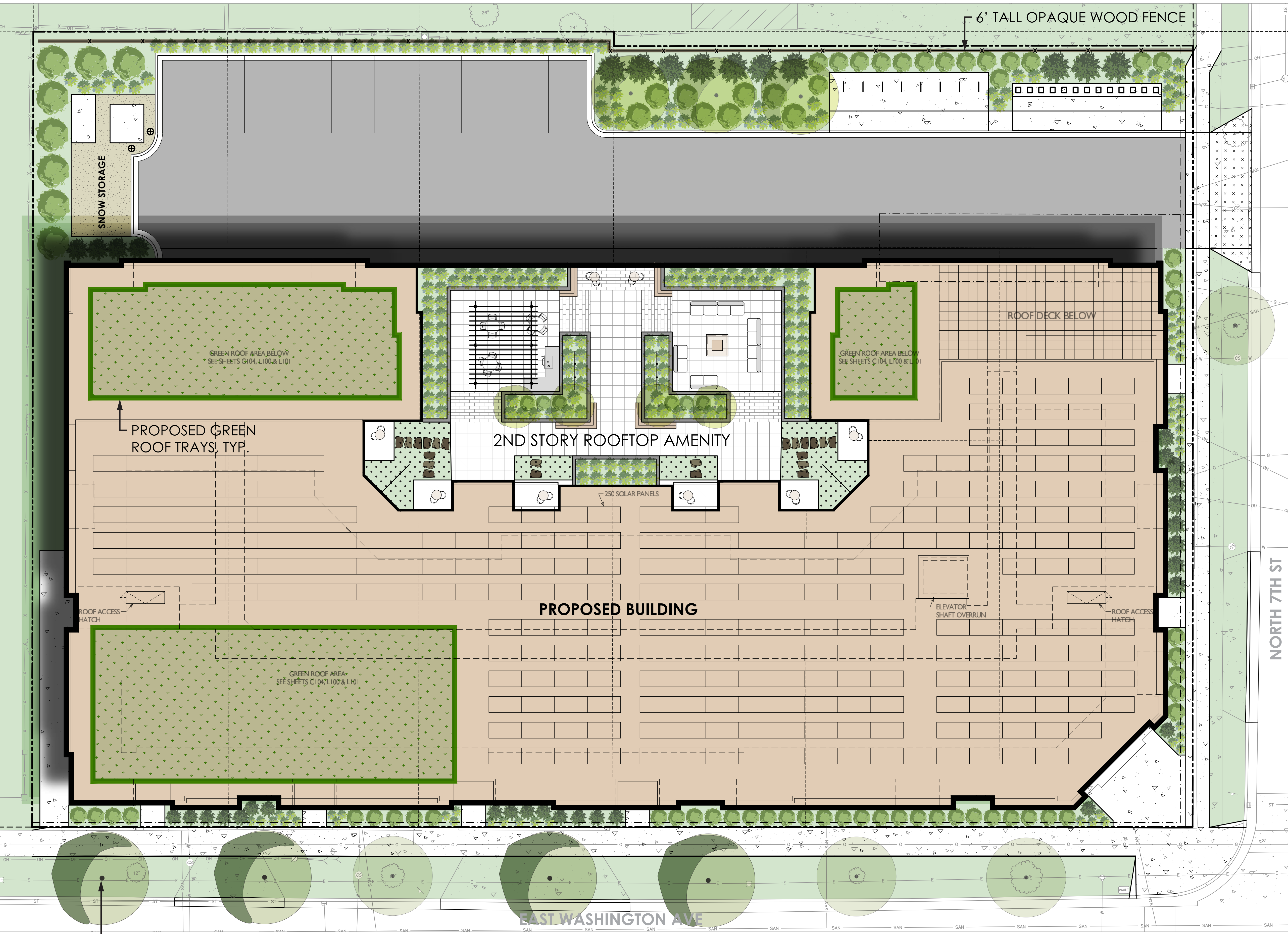
Concept Site Plan

Redevelopment
2450 E. Washington Ave., Madison

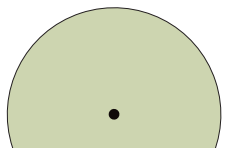

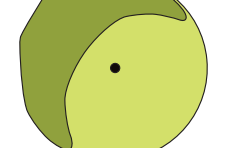



UDC PRESENTATION | 2024.10.07 | 2422



File: I:\SDIN\Projects\2024\2414144\02 Planning\01 Graphics and Exhibits\2024-07-09_Concept Landscape Plan\CAD\2414144_01_Concept Landscape Plan.dwg Layout: L1 - Concept Landscape Plan.dwg User: matt.arnold Plotted: Oct 02, 2024 - 4:53pm Xrefs:

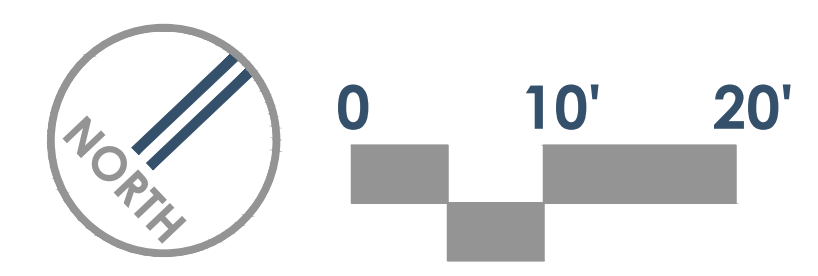


LEGEND

-  **EXISTING TREE**
-  **CANOPY TREE**
GINKGO, HACKBERRY, OAK, HONEYLOCUST
-  **DECIDUOUS TREE**
MAPLE, SERVICEBERRY, CRABAPPLE
-  **CONIFER TREE/SHRUB**
JUNIPER, ARBORVITAE, YEW, RHODODENDRON
-  **DECIDUOUS SHRUB**
CHOKEBERRY, LILAC, NINEBARK, VIBURNUM
-  **PERENNIALS**
POLLINATORS, ORNAMENTAL GRASSES

VOLKER - EAST WASHINGTON AVE
MADISON, WI
DATE: 10.02.2024

CONCEPTUAL LANDSCAPE PLAN





Previous Design
Concept Image

Redevelopment
2450 E. Washington Ave., Madison

ISSUED FOR REVIEW | 2024.07.29 | 2422





Concept Image

Mixed-Use Redevelopment
2450 E. Washington Ave., Madison



Previous Design
Concept Image

Redevelopment
2450 E. Washington Ave., Madison

ISSUED FOR REVIEW | 2024.07.29 | 2422



knothe + bruce
ARCHITECTS



Concept Image



Previous Design
Concept Image

Redevelopment
2450 E. Washington Ave., Madison

ISSUED FOR REVIEW | 2024.07.29 | 2422





Concept Image



Previous Design
Concept Image

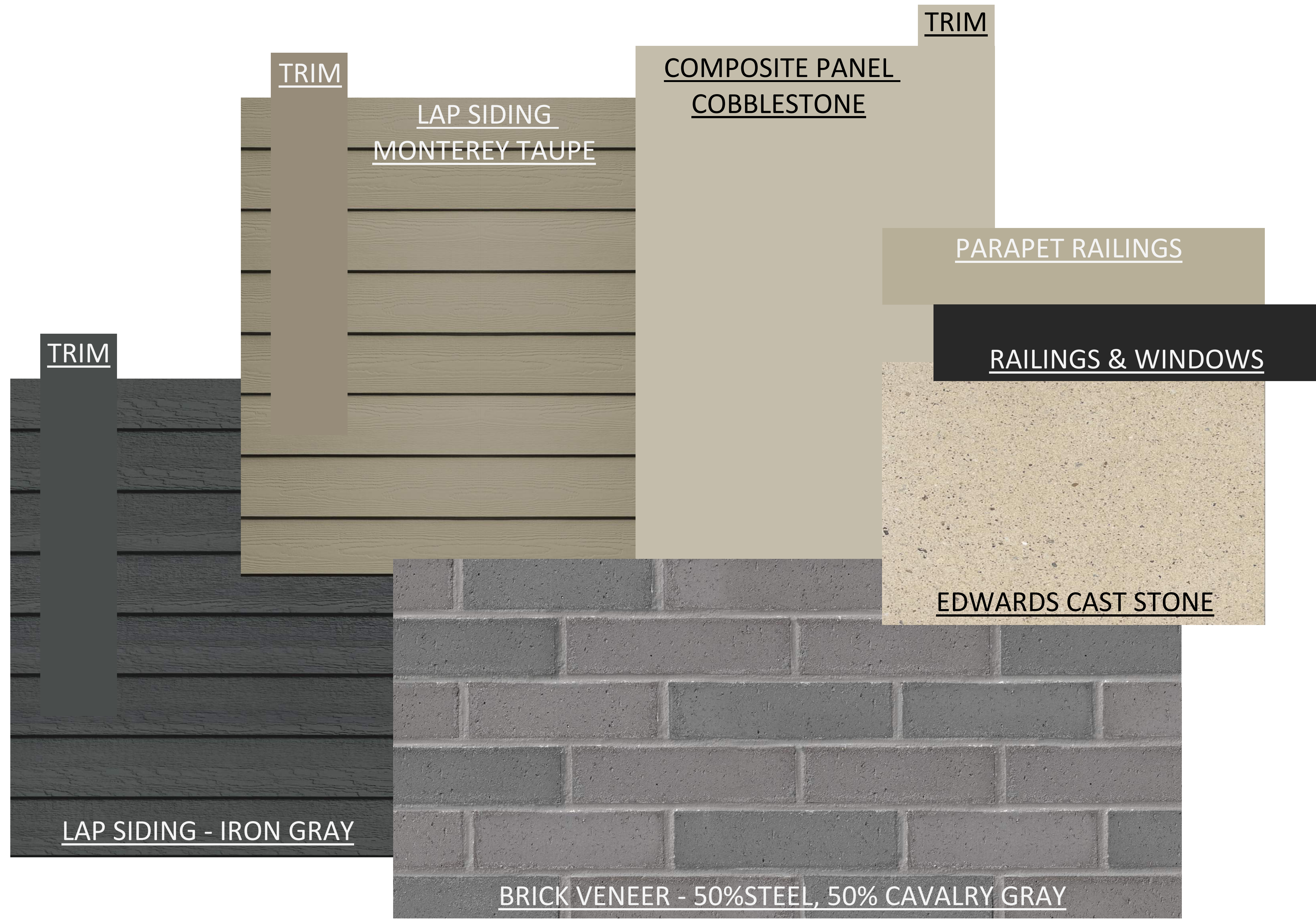


Concept Image

Mixed-Use Redevelopment
2450 E. Washington Ave., Madison

UDC SUBMITTAL | 2024.08.26 | 2422





ISSUED
UDC SUBMITTAL

PROJECT TITLE
**Mixed-Use
Redevelopment**

2450 E. Washington
Ave., Madison
SHEET TITLE
Material Board

SHEET NUMBER
A900

PROJECT NUMBER
2422

NOTE: COLORS MAY DIFFER ON VERIED SCREENS OR PRINTS, PLEASE REFER TO MANUFACTURER WEBSITES.

EXTERIOR MATERIAL SCHEDULE			
MARK	BUILDING ELEMENT	MANUFACTURER	COLOR
01	COMPOSITE PANEL - SMOOTH	JAMES HARDIE	COBBLESTONE
02	COMPOSITE SIDING 6"	JAMES HARDIE	MONTEREY TAUPE
03	COMPOSITE SIDING 6"	JAMES HARDIE	IRON GRAY
04	BRICK VENEER	GENERAL SHALE	MIX 50% STEEL, 50% CAVALRY GRAY
05	CAST STONE	EDWARDS	18-025
06	RAILINGS & HANDRAILS	SUPERIOR	BLACK
07	RAILINGS - PARAPET	SUPERIOR	SANDSTONE
08	ALUMINIUM STOREFRONT	N/A	BLACK
09	COMPOSITE WINDOW	ANDERSEN	BLACK