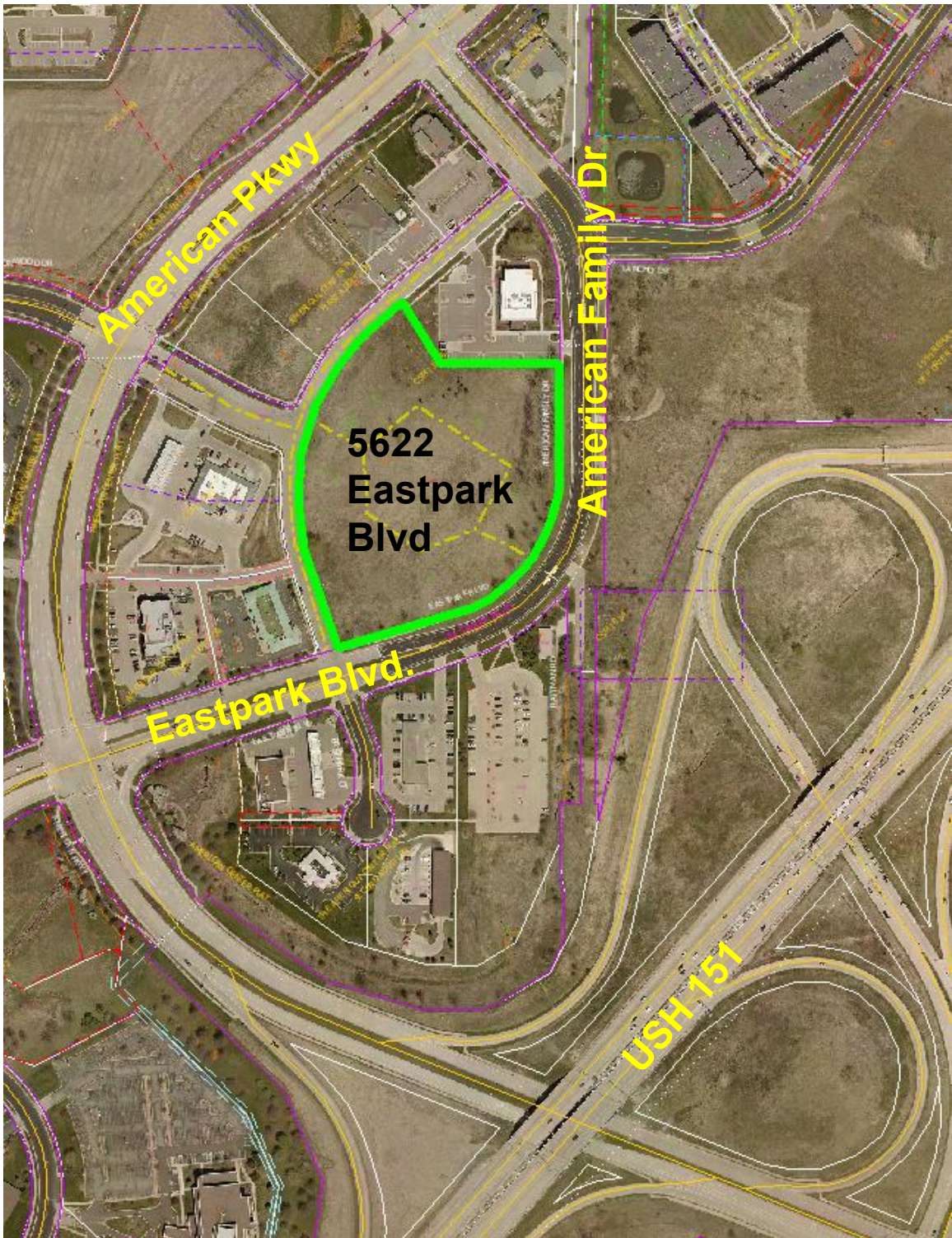


5622 EASTPARK BOULEVARD
Project: 13561, Contract: 9045



TANCHO DRIVE

AMCENTER DRIVE

AMERICAN FAMILY DRIVE

BUTTONWOOD DRIVE

EASTPARK BOULEVARD



Development Agreement shall include the following:
 ~Private lateral sanitary, water and storm connections to public mains
 ~Terrace and street restoration due to lateral connections



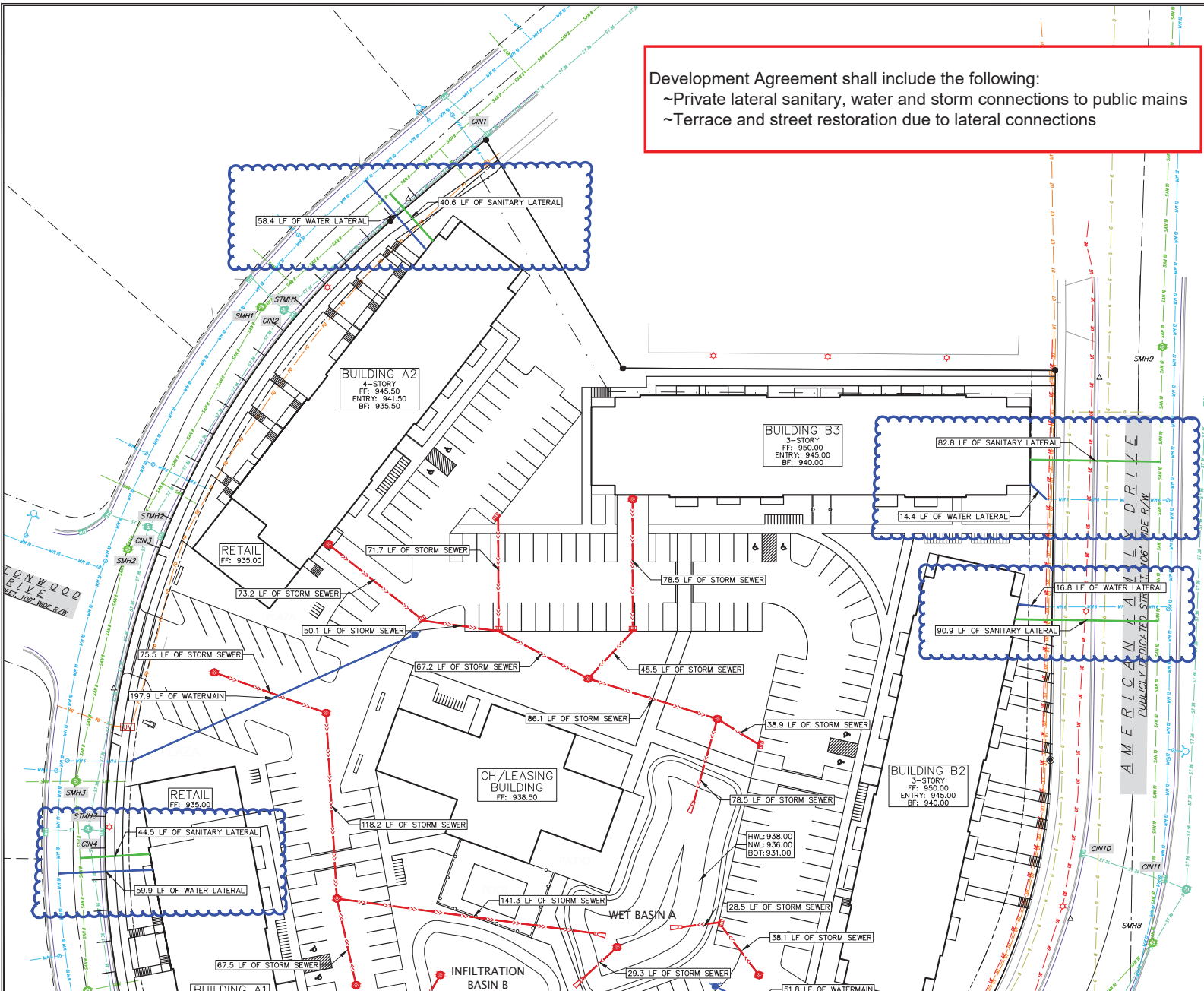
GRAPHIC SCALE FEET
 0 15 30 60

PROPOSED UTILITY LEGEND

- STORM SEWER PIPE
- STORM SEWER ENDWALL
- STORM SEWER CURB INLET
- STORM SEWER FIELD INLET
- SANITARY SEWER LATERAL PIPE
- WATER SERVICE LATERAL PIPE

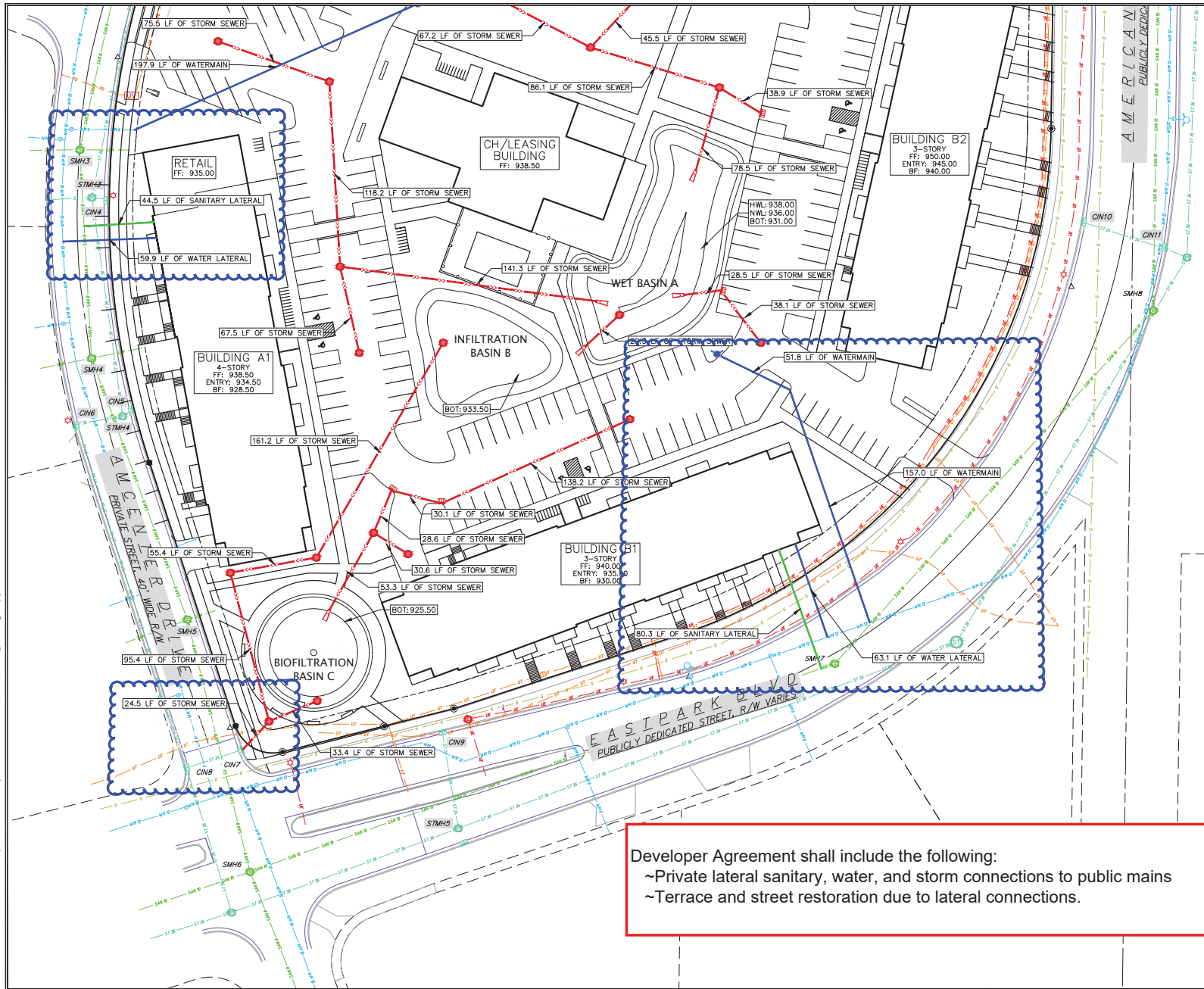
UTILITY NOTES:

1. CONTRACTOR TO VERIFY EXISTING UTILITY LOCATIONS AND ELEVATIONS PRIOR TO STARTING WORK.
2. SANITARY & STORM SEWER LENGTHS SHOWN ARE FROM CENTER OF STRUCTURE TO CENTER OF STRUCTURE. STORM SEWER END SECTIONS ARE INCLUDED IN THE LENGTH AND SLOPE OF THE PIPE.
3. CONTRACTOR SHALL INVESTIGATE ALL UTILITY CROSSINGS PRIOR TO CONSTRUCTION AND NOTIFY ENGINEER OF ANY CONFLICTS.
4. CONTRACTOR SHALL BE RESPONSIBLE FOR ADJUSTING ALL UTILITY STRUCTURES (MANHOLE RIMS, WATER VALVES, AND CURB STOPS), IF NECESSARY.
5. CONTRACTOR SHALL OBTAIN ANY NECESSARY WORK IN RIGHT-OF-WAY, EXCAVATION, UTILITY CONNECTION, PLUGGING, ABANDONMENT, AND DRIVEWAY CONNECTION PERMITS PRIOR TO CONSTRUCTION.
6. FOR ALL SEWER AND WATER MAIN CROSSINGS: PROVIDE MINIMUM 18" SEPARATION WHEN WATER MAIN CROSSES BELOW SEWER AND MINIMUM 6" SEPARATION WHEN WATER MAIN CROSSES ABOVE SEWER.
7. STORM BUILDING SEWER PIPE SHALL CONFORM TO ONE OF THE STANDARDS LISTED IN TABLE 384.30-6 OF SPS 384.30(3)(c).
8. PRIVATE WATER SERVICES AND PRIVATE WATER MAINS SHALL CONFORM TO ONE OF THE STANDARDS LISTED IN TABLE 384.30-7 OF SPS 384.30(4)(d).
9. PRIVATE SANITARY SEWER AND LATERALS SHALL BE POLYVINYL CHLORIDE (PVC) ASTM D3034 - SDR 35 OR APPROVED EQUAL MATERIAL THAT CONFORMS TO ONE OF THE STANDARDS LISTED IN TABLE 384.30-3 OF SPS 384.30(2)(c).
10. SITE CONTRACTOR SHALL LEAVE SANITARY AND WATER LATERALS FIVE (5) FEET SHORT (HORIZONTALLY) FROM THE BUILDING. BUILDING PLUMBER SHALL VERIFY SIZE, LOCATION, AND INVERT ELEVATION OF PROPOSED SANITARY AND WATER LATERALS.
11. CONTRACTOR SHALL FIELD VERIFY THE SIZE, TYPE, LOCATION, AND ELEVATION OF EXISTING UTILITIES PRIOR TO INSTALLING ANY ON-SITE UTILITIES OR STRUCTURES. CONTACT ENGINEER PRIOR TO INSTALLATION IF DISCREPANCY EXISTS WITHIN THESE PLANS.
12. PROPOSED UTILITY SERVICE LINES SHOWN ARE APPROXIMATE. COORDINATE THE EXACT LOCATIONS WITH THE PLUMBING DRAWINGS. COORDINATE THE LOCATIONS WITH THE PLUMBING CONTRACTOR AND/OR OWNER'S CONSTRUCTION REPRESENTATIVE PRIOR TO INSTALLATION OF ANY NEW UTILITIES.
13. ALL WATER MAIN AND SERVICES SHALL BE INSTALLED AT A MINIMUM DEPTH OF 6.5' FROM TOP OF FINISHED GROUND ELEVATION TO TOP OF MAIN.
14. CLEAN OUT ALL EXISTING AND PROPOSED STORM INLETS AND CATCH BASINS AT THE COMPLETION OF CONSTRUCTION.
15. CONNECTIONS TO EXISTING WATER MAIN TO BE BY LIVE TAPPING. CONTRACTOR IS RESPONSIBLE FOR ALL CONNECTION FEES AND COSTS PAYABLE TO THE CITY OF MADISON FOR LIVE TAPPING, AND ALL OTHER WORK AND COSTS ASSOCIATED WITH LIVE TAPPING.



REVISIONS	NO.	DATE	REMARKS

SCALE	AS SHOWN
DATE	3/25/2021
DRAWN	JNOR
CHECKED	JKAS
PROJECT NO.	200098
SHEET	8 OF 13
DWG. NO.	C500



N

GRAPHIC SCALE FEET
0 15 30 60

PROPOSED UTILITY LEGEND

- STORM SEWER PIPE
- STORM SEWER ENDWALL
- STORM SEWER CURB INLET
- STORM SEWER FIELD INLET
- SANITARY SEWER LATERAL PIPE
- WATER SERVICE LATERAL PIPE

UTILITY NOTES:

1. CONTRACTOR TO VERIFY EXISTING UTILITY LOCATIONS AND ELEVATIONS PRIOR TO STARTING WORK.
2. SANITARY & STORM SEWER LENGTHS SHOWN ARE FROM CENTER OF STRUCTURE TO CENTER OF STRUCTURE. STORM SEWER END SECTIONS ARE INCLUDED IN THE LENGTH AND SLOPE OF THE PIPE.
3. CONTRACTOR SHALL INVESTIGATE ALL UTILITY CROSSINGS PRIOR TO CONSTRUCTION AND NOTIFY ENGINEER OF ANY CONFLICTS.
4. CONTRACTOR SHALL BE RESPONSIBLE FOR ADJUSTING ALL UTILITY STRUCTURES (MANHOLE RIMS, WATER VALVES, AND CURB STOPS), IF NECESSARY.
5. CONTRACTOR SHALL OBTAIN ANY NECESSARY WORK IN RIGHT-OF-WAY, EXCAVATION, UTILITY CONNECTION, PLUGGING, ABANDONMENT, AND DRIVEWAY CONNECTION PERMITS PRIOR TO CONSTRUCTION.
6. FOR ALL SEWER AND WATER MAIN CROSSINGS: PROVIDE MINIMUM 18" SEPARATION WHEN WATER MAIN CROSSES BELOW SEWER AND MINIMUM 6" SEPARATION WHEN WATER MAIN CROSSES ABOVE SEWER.
7. STORM BUILDING SEWER PIPE SHALL CONFORM TO ONE OF THE STANDARDS LISTED IN TABLE 384.30-6 OF SPS 384.30(3)(c).
8. PRIVATE WATER SERVICES AND PRIVATE WATER MAINS SHALL CONFORM TO ONE OF THE STANDARDS LISTED IN TABLE 384.30-7 OF SPS 384.30(4)(d).
9. PRIVATE SANITARY SEWER AND LATERALS SHALL BE POLYVINYL CHLORIDE (PVC) ASTM D3034 - SDR 35 OR APPROVED EQUAL MATERIAL THAT CONFORMS TO ONE OF THE STANDARDS LISTED IN TABLE 384.30-3 OF SPS 384.30(2)(c).
10. SITE CONTRACTOR SHALL LEAVE SANITARY AND WATER LATERALS FIVE (5) FEET SHORT (HORIZONTALLY) FROM THE BUILDING. BUILDING PLUMBER SHALL VERIFY SIZE, LOCATION, AND INVERT ELEVATION OF PROPOSED SANITARY AND WATER LATERALS.
11. CONTRACTOR SHALL FIELD VERIFY THE SIZE, TYPE, LOCATION, AND ELEVATION OF EXISTING UTILITIES PRIOR TO INSTALLING ANY ON-SITE UTILITIES OR STRUCTURES. CONTACT ENGINEER PRIOR TO INSTALLATION IF DISCREPANCY EXISTS WITHIN THESE PLANS.
12. PROPOSED UTILITY SERVICE LINES SHOWN ARE APPROXIMATE. COORDINATE THE EXACT LOCATIONS WITH THE PLUMBING DRAWINGS. COORDINATE THE LOCATIONS WITH THE PLUMBING CONTRACTOR AND/OR OWNER'S CONSTRUCTION REPRESENTATIVE PRIOR TO INSTALLATION OF ANY NEW UTILITIES.
13. ALL WATER MAIN AND SERVICES SHALL BE INSTALLED AT A MINIMUM DEPTH OF 6.5' FROM TOP OF FINISHED GROUND ELEVATION TO TOP OF MAIN.
14. CLEAN OUT ALL EXISTING AND PROPOSED STORM INLETS AND CATCH BASINS AT THE COMPLETION OF CONSTRUCTION.
15. CONNECTIONS TO EXISTING WATER MAIN TO BE BY LIVE TAPPING. CONTRACTOR IS RESPONSIBLE FOR ALL CONNECTION FEES AND COSTS PAYABLE TO THE CITY OF MADISON FOR LIVE TAPPING, AND ALL OTHER WORK AND COSTS ASSOCIATED WITH LIVE TAPPING.

Developer Agreement shall include the following:
 ~Private lateral sanitary, water, and storm connections to public mains
 ~Terrace and street restoration due to lateral connections.

vierbicher
planners | engineers | fabricators
Phone: (608) 261-3898

Utility Plan - South
UrbanStreet - The American Center Apartments
Madison, Wisconsin

REVISIONS	NO.	DATE	REMARKS

SCALE: AS SHOWN
 DATE: 3/25/2021
 DRAFTER: JNOR
 CHECKED: JKAS
 PROJECT NO.: 200098
 SHEET: 9 OF 13
 DWG. NO.: C501