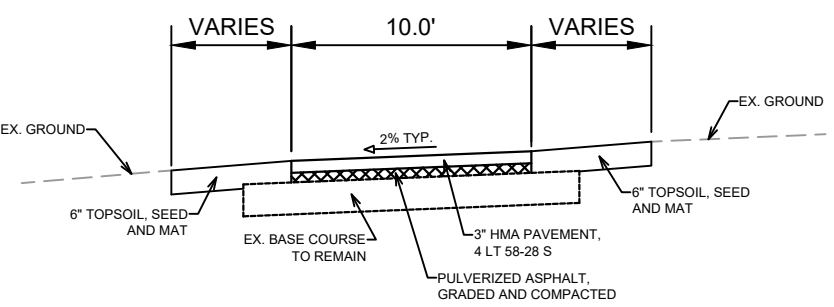
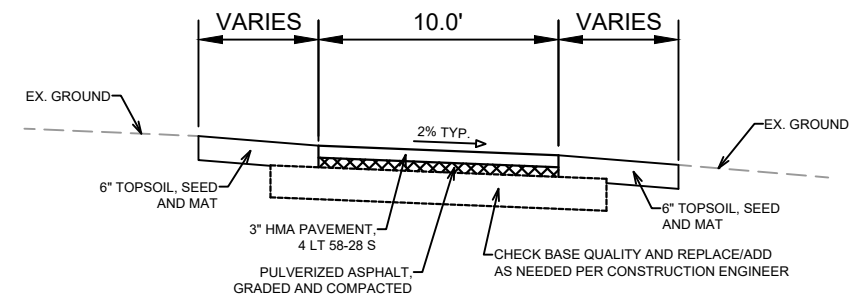
 = PULVERIZE & SHAPE PER TYPICAL SECTION



PATH TYPICAL SECTION
WINGRA CREEK PATH (FACING E)
(PARK ST TO RR TRACKS)



PATH TYPICAL SECTION
WINGRA CREEK PATH (FACING E)
(RR TRACKS TO UNDERPASS)

NOTES:
1. INSTALL 8-INCH SILT SOCK ALONG WORK AREAS WHERE PAVEMENT EDGE IS WITHIN 5-FT OF CREEK BANK.

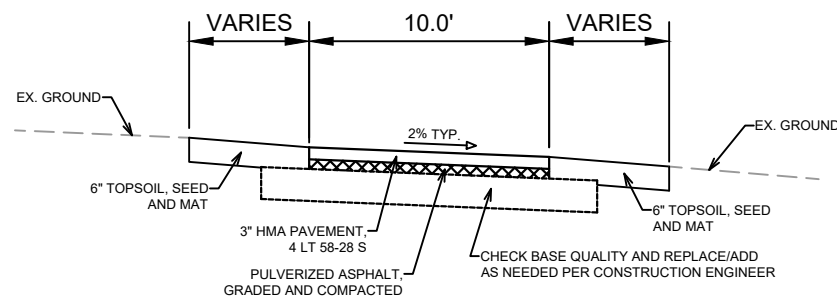
MARK	REVISION	DATE	BY
13715	5/17/2022	10:54 AM	
Designed By: AJC	Date: 5/17/2022	10:54 AM	Scale: 1:100
13715			P-1

13715
MADISON, WI
8644
CONTRACT NO:

WINGRA CREEK PATH
BIKEWAYS 2022
M:\DESIGN\Projects\13715\CAD\Streets\13715EN-Street_Goodman-Olin-Quann-Wingra.dwg

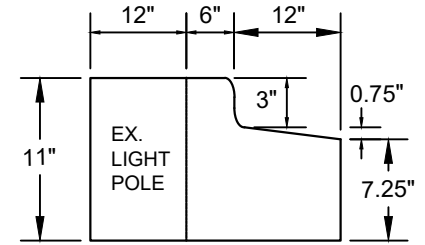


13715
P-1



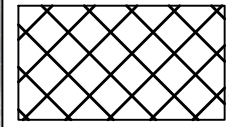
PATH TYPICAL SECTION
WINGRA CREEK PATH (FACING NE)
QUANN PARK PATH (FACING E)

MODIFIED CONCRETE CURB & GUTTER AROUND LIGHT POLE. SEE INSET DETAIL. TAPER CURB-HEAD DOWN TO MATCH ASPHALT PATH ON EITHER END.



MODIFIED CONCRETE CURB & GUTTER AROUND LIGHT POLE. (PAY AS HAND-FORMED CURB)

FILL REMAINING GRASSY AREA WITH FULL DEPTH ASPHALT AND BASE COURSE AS DIRECTED BY CONSTRUCTION ENGINEER.

 = PULVERIZE & SHAPE PER TYPICAL SECTION

FULL DEPTH ASPHALT & BASE COURSE REPLACEMENT AT BRIDGE APPROACH.

NOTE 1

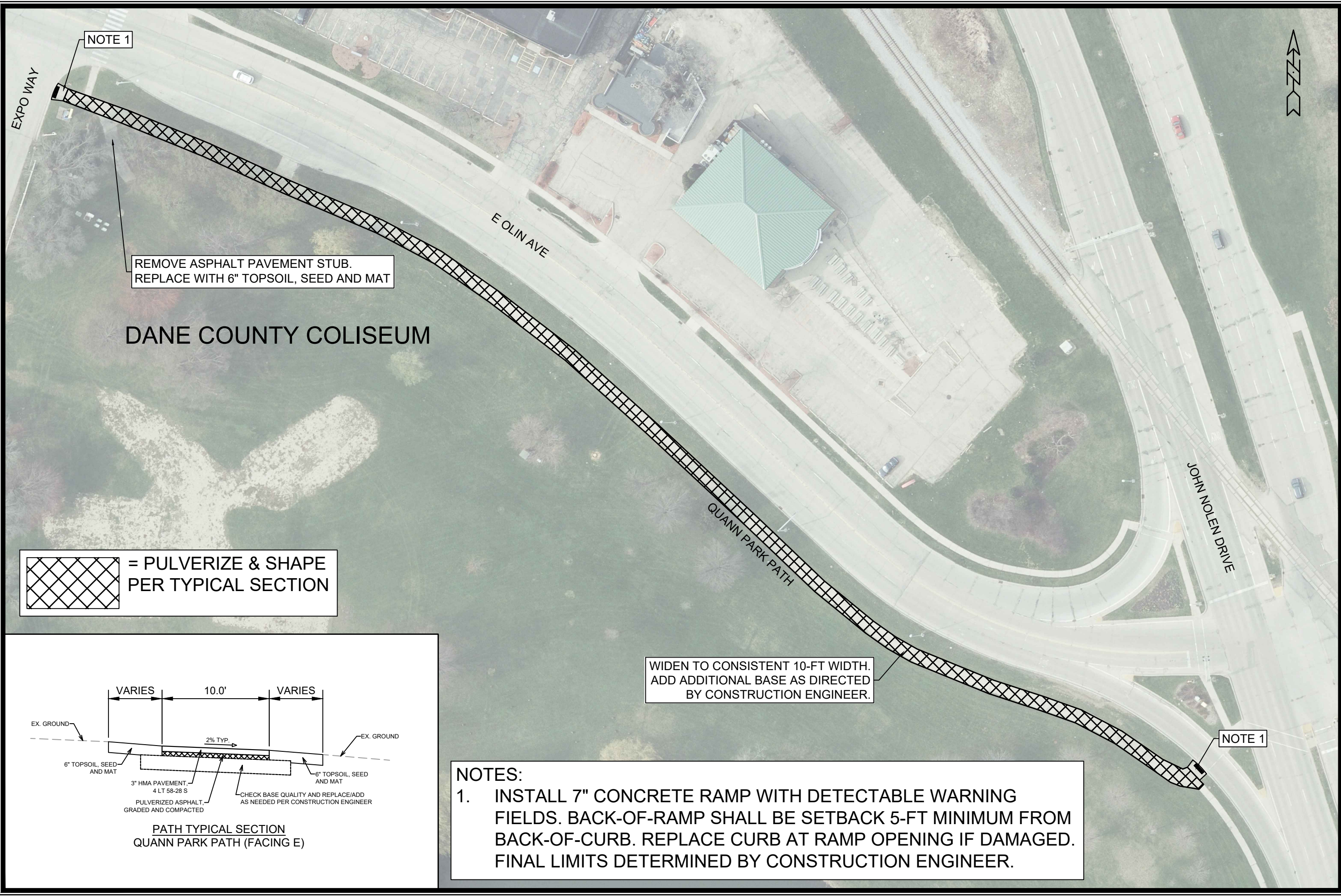
NOTE 1

- NOTES:
1. INSTALL 7" CONCRETE RAMP WITH DETECTABLE WARNING FIELDS. BACK-OF-RAMP SHALL BE SETBACK 5-FT MINIMUM FROM BACK-OF-CURB. REPLACE CURB AT RAMP OPENING IF DAMAGED. FINAL LIMITS DETERMINED BY CONSTRUCTION ENGINEER.
 2. INSTALL 8-INCH SILT SOCK ALONG WORK AREAS WHERE PAVEMENT EDGE IS WITHIN 5-FT OF CREEK BANK.

DATE	BY
REVISION	SCALE
DESIGNED BY: AJC	DATE: 5/17/2022 10:54 AM
MARK	13715
	P-2

13715
MADISON, WI
8644
CONTRACT NO:

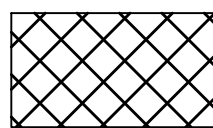




NOTE 1

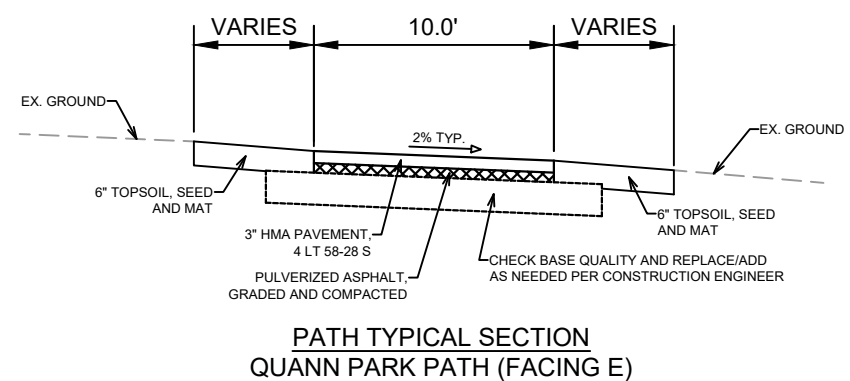
REMOVE ASPHALT PAVEMENT STUB.
REPLACE WITH 6" TOPSOIL, SEED AND MAT

DANE COUNTY COLISEUM

 = PULVERIZE & SHAPE PER TYPICAL SECTION

WIDEN TO CONSISTENT 10-FT WIDTH.
ADD ADDITIONAL BASE AS DIRECTED
BY CONSTRUCTION ENGINEER.

NOTE 1



PATH TYPICAL SECTION
QUANN PARK PATH (FACING E)

NOTES:
1. INSTALL 7" CONCRETE RAMP WITH DETECTABLE WARNING FIELDS. BACK-OF-RAMP SHALL BE SETBACK 5-FT MINIMUM FROM BACK-OF-CURB. REPLACE CURB AT RAMP OPENING IF DAMAGED. FINAL LIMITS DETERMINED BY CONSTRUCTION ENGINEER.

MARK	REVISION	DATE	BY
13715		5/17/2022 10:54 AM	
Designed By: AJC			
		Scale: 1:60	P-3

13715
MADISON, WI
8644
CONTRACT NO:

QUANN PARK PATH
BIKEWAYS 2022
M:\DESIGN\Projects\13715\CAD\Streets\13715EN-Street_Goodman-Olin-Quann-Wingra.dwg

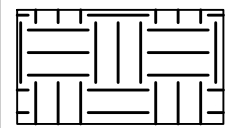


13715
P-3

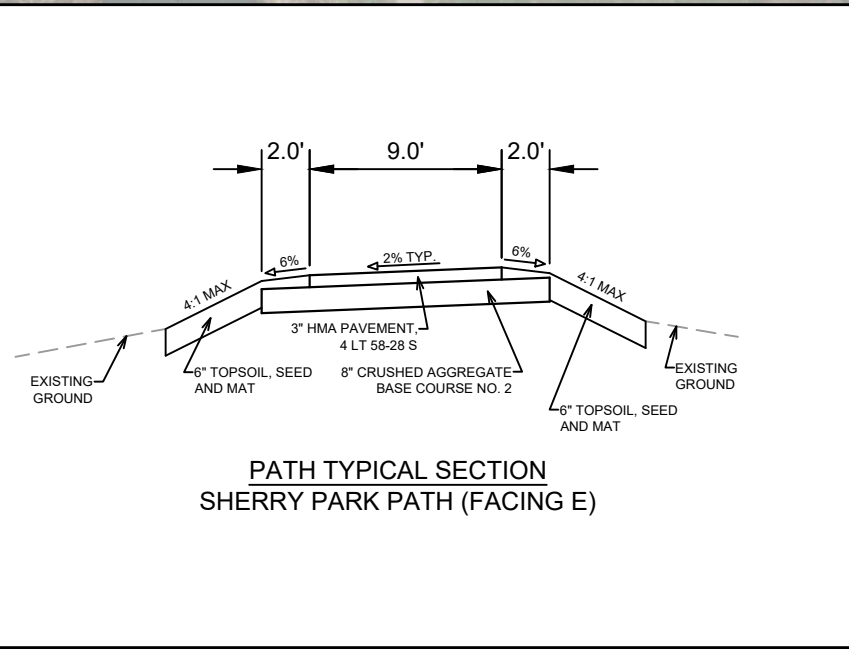
OB SHERRY PARK



MATCH AT NEW PATH BUILT WITH GARVER PATH PROJECT



= FULL DEPTH REPLACEMENT PER TYPICAL SECTION



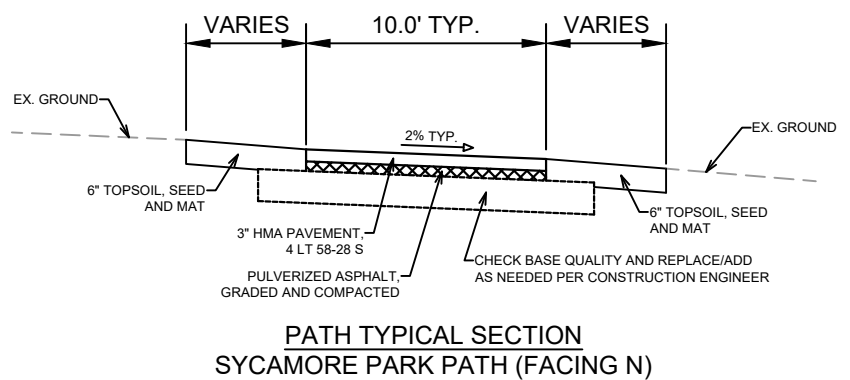
MARK	REVISION	DATE	BY
13715			P-4

13715
MADISON, WI
8644
CONTRACT NO:

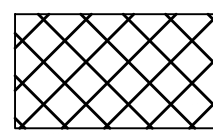
SHERRY PARK PATH
BIKEWAYS 2022
M:\DESIGN\Projects\13715\CAD\Streets\13715EN-Street_SherryPark.dwg

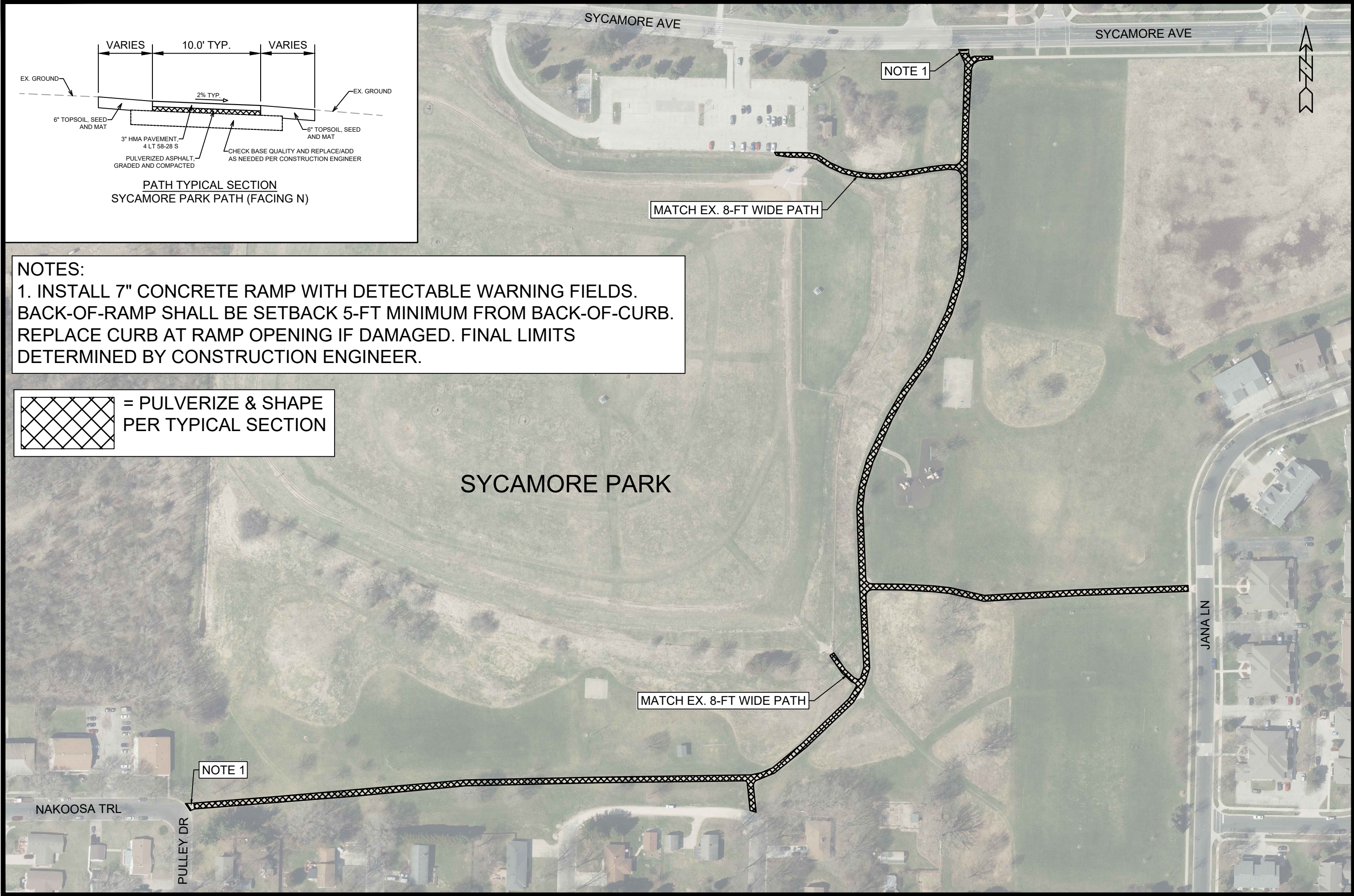


13715
P-4



NOTES:
 1. INSTALL 7" CONCRETE RAMP WITH DETECTABLE WARNING FIELDS. BACK-OF-RAMP SHALL BE SETBACK 5-FT MINIMUM FROM BACK-OF-CURB. REPLACE CURB AT RAMP OPENING IF DAMAGED. FINAL LIMITS DETERMINED BY CONSTRUCTION ENGINEER.

 = PULVERIZE & SHAPE PER TYPICAL SECTION



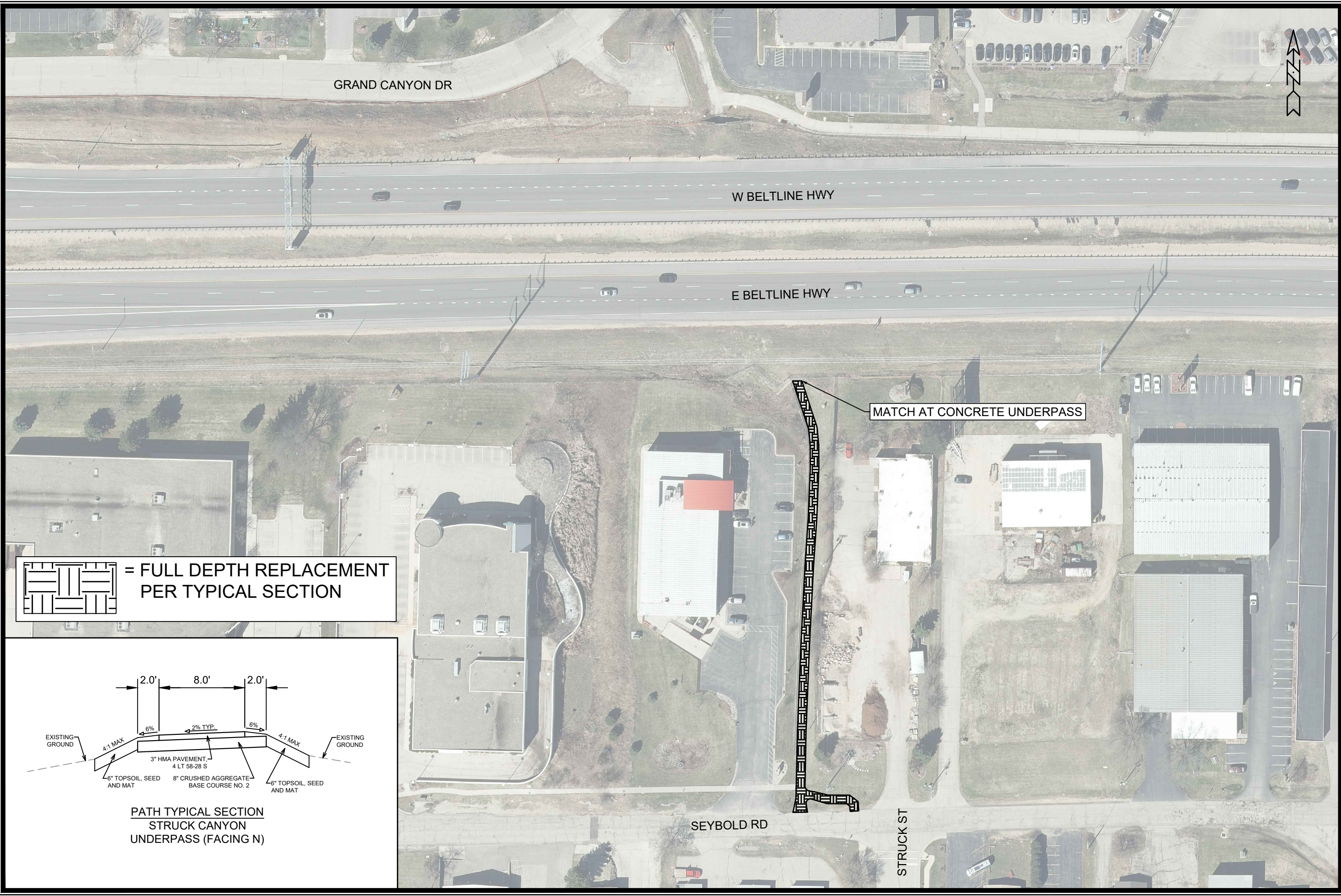
MARK	REVISION	DATE	BY
13715			
Designed By: AJC	Date: 5/17/2022	10:55 AM	Scale: 1:150
			P-5

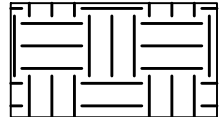
13715
 MADISON, WI
 8644
 CONTRACT NO:

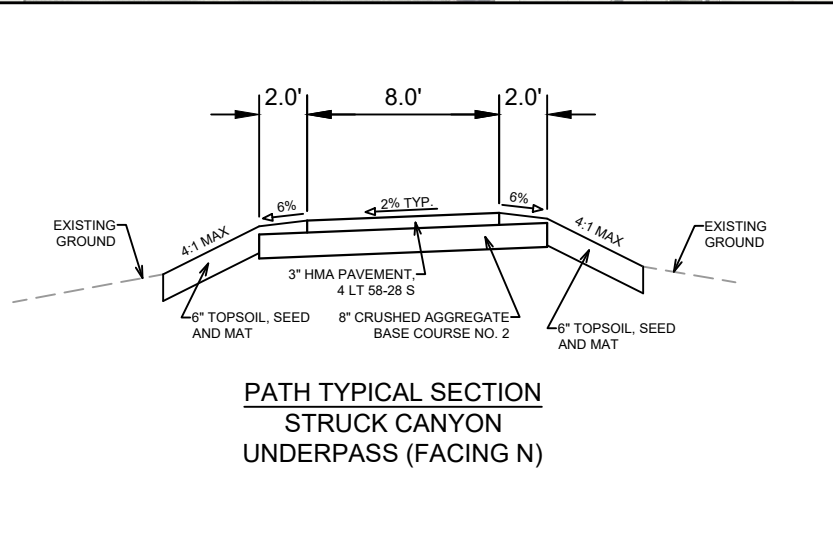
SYCAMORE PARK PATH
 BIKEWAYS 2022
 M:\DESIGN\Projects\13715\CAD\Streets\13715EN-Street_SycamorePark.dwg



13715
 P-5



 = FULL DEPTH REPLACEMENT PER TYPICAL SECTION



MATCH AT CONCRETE UNDERPASS

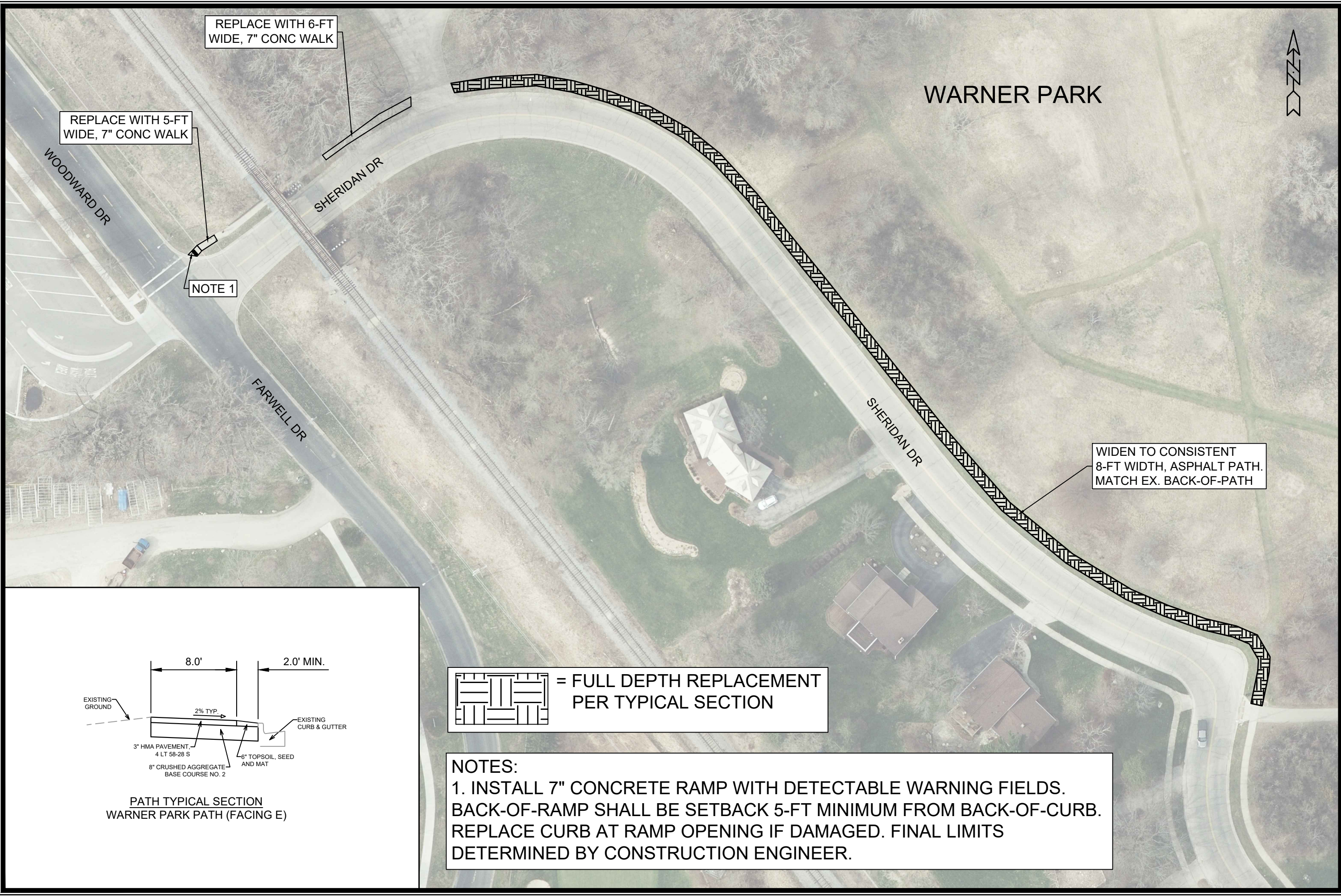
MARK	REVISION	DATE	BY
Designed By: AJC	Date: 5/17/2022	10:55 AM	Scale: 1:80
13715			P-6

13715
MADISON, WI
CONTRACT NO: 8644

STRUCK CANYON UNDERPASS PATH
BIKEWAYS 2022
M:\DESIGN\Projects\13715\CAD\Streets\13715EN-Street_StruckCanyonUnderpass.dwg



13715
P-6



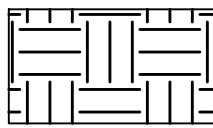
REPLACE WITH 6-FT WIDE, 7" CONC WALK

REPLACE WITH 5-FT WIDE, 7" CONC WALK

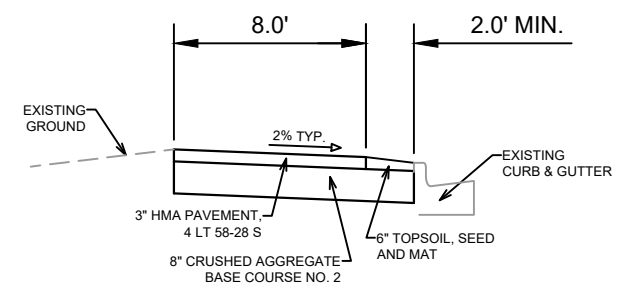
NOTE 1

WARNER PARK

WIDEN TO CONSISTENT 8-FT WIDTH, ASPHALT PATH. MATCH EX. BACK-OF-PATH

 = FULL DEPTH REPLACEMENT PER TYPICAL SECTION

NOTES:
 1. INSTALL 7" CONCRETE RAMP WITH DETECTABLE WARNING FIELDS. BACK-OF-RAMP SHALL BE SETBACK 5-FT MINIMUM FROM BACK-OF-CURB. REPLACE CURB AT RAMP OPENING IF DAMAGED. FINAL LIMITS DETERMINED BY CONSTRUCTION ENGINEER.



PATH TYPICAL SECTION
 WARNER PARK PATH (FACING E)

MARK	REVISION	DATE	BY
13715			
Designed By: AJC	Date: 5/17/2022	10:55 AM	Scale: 1:60
			P-7

13715
 MADISON, WI
 CONTRACT NO: 8644

WARNER PARK PATH
 BIKEWAYS 2022
 M:\DESIGN\Projects\13715\CAD\Streets\13715EN-Street_WarnerPark.dwg



13715
 P-7