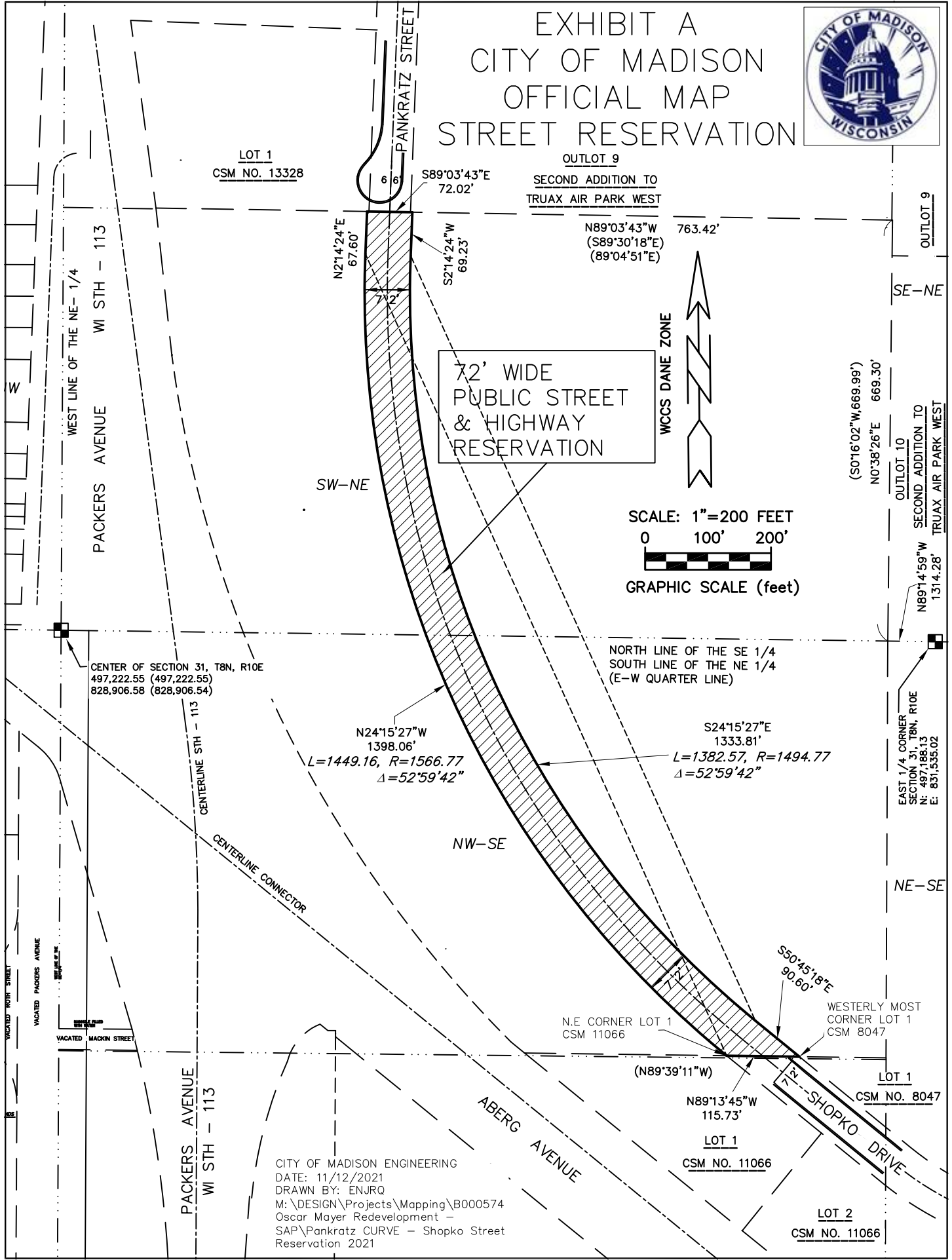


EXHIBIT A CITY OF MADISON OFFICIAL MAP STREET RESERVATION



LOT 1
CSM NO. 13328

OUTLOT 9
SECOND ADDITION TO
TRUAX AIR PARK WEST

OUTLOT 9

72' WIDE
PUBLIC STREET
& HIGHWAY
RESERVATION

SCALE: 1"=200 FEET
0 100' 200'
GRAPHIC SCALE (feet)

CENTER OF SECTION 31, T8N, R10E
497,222.55 (497,222.55)
828,906.58 (828,906.54)

NORTH LINE OF THE SE 1/4
SOUTH LINE OF THE NE 1/4
(E-W QUARTER LINE)

$N24^{\circ}15'27''W$
1398.06'
 $L=1449.16, R=1566.77$
 $\Delta=52^{\circ}59'42''$

$S24^{\circ}15'27''E$
1333.81'
 $L=1382.57, R=1494.77$
 $\Delta=52^{\circ}59'42''$

EAST 1/4 CORNER
SECTION 31, T8N, R10E
N: 497,188.13
E: 831,535.02

N.E. CORNER LOT 1
CSM 11066

WESTERLY MOST
CORNER LOT 1
CSM 8047

$(N89^{\circ}39'11''W)$

$N89^{\circ}13'45''W$
115.73'

LOT 1
CSM NO. 11066

LOT 1
CSM NO. 8047

LOT 2
CSM NO. 11066

CITY OF MADISON ENGINEERING
DATE: 11/12/2021
DRAWN BY: ENJRO
M: \DESIGN\Projects\Mapping\B000574
Oscar Mayer Redevelopment -
SAP\Pankratz CURVE - Shopko Street
Reservation 2021