

Downtown Bicycle & Moped Parking Study
Recommended Additional Rack Locations
Map C-1: State Street, 600 Block



ID: 2
 Wheelwell, double sided, 5 bikes

ID: 21
 Wheelwell, single sided, 3 bikes

ID: 22
 Wheelwell, double sided, 7 bikes

ID: 23
 Wheelwell, single sided, 5 bikes

ID: 25
 Wheelwell, single sided, 5 bikes

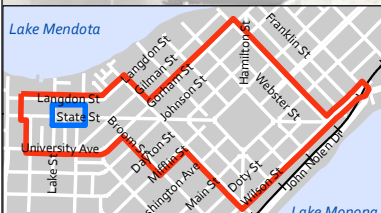
ID: 24
 Wheelwell, double sided, 7 bikes

ID: 36
 Wheelwell, double sided, 7 bikes

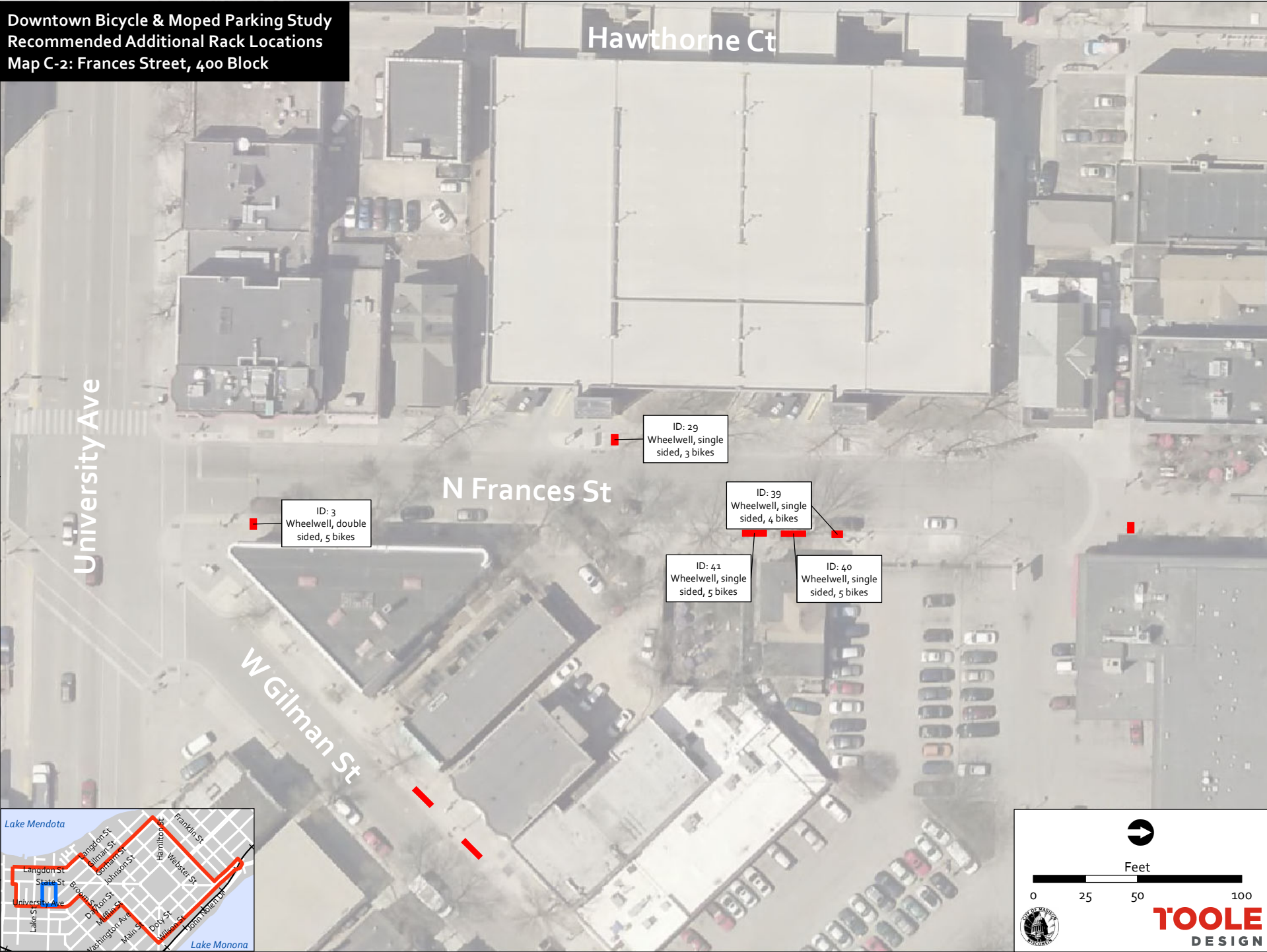
ID: 35
 Wheelwell, single sided, 4 bikes

ID: 37
 Wheelwell, double sided, 5 bikes

0 25 50 100
 Feet



**Downtown Bicycle & Moped Parking Study
Recommended Additional Rack Locations
Map C-2: Frances Street, 400 Block**



**Downtown Bicycle & Moped Parking Study
Recommended Additional Rack Locations
Map C-3: State Street, 500 Block**



Downtown Bicycle & Moped Parking Study
Recommended Additional Rack Locations
Map C-4: Gilman Street, 400 Block

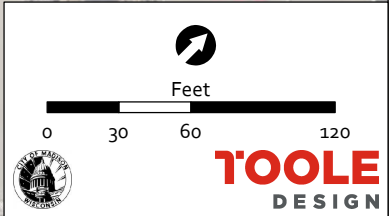
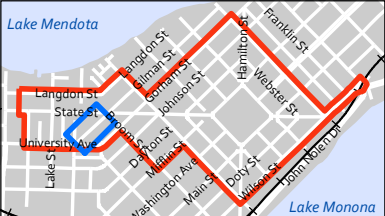


ID: 43
Wheelwell, single
sided, 5 bikes

ID: 44
Wheelwell, single
sided, 5 bikes

ID: 45
Wheelwell, single
sided, 5 bikes

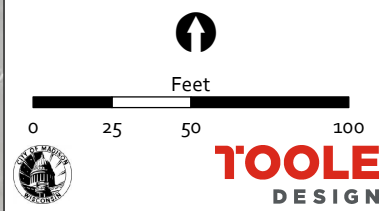
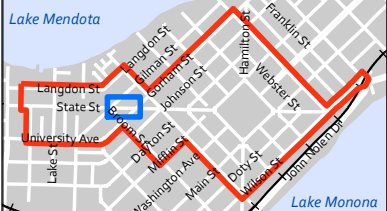
ID: 30
Wheelwell, double
sided, 5 bikes



Downtown Bicycle & Moped Parking Study
Recommended Additional Rack Locations
Map C-5: State Street, 400 Block



ID: 46
Wheelwell, single
sided, 5 bikes



TOOLE
DESIGN

Downtown Bicycle & Moped Parking Study
Recommended Additional Rack Locations
Map C-6: State Street, 300 Block



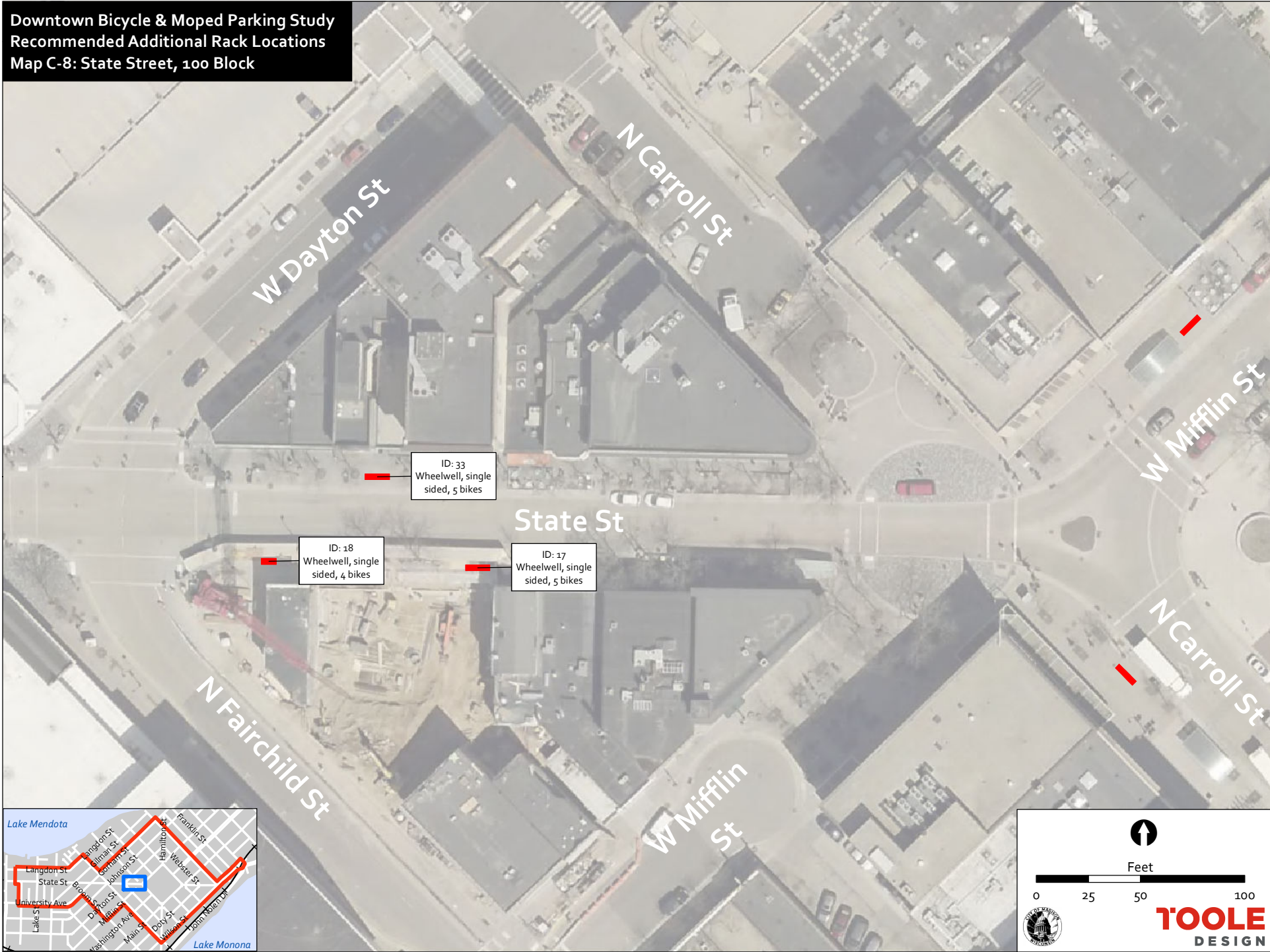
ID: 34
Wheelwell, single
sided, 5 bikes

↑
Feet
0 25 50 100
TOOLE
DESIGN

Downtown Bicycle & Moped Parking Study
Recommended Additional Rack Locations
Map C-7: State Street, 200 Block



**Downtown Bicycle & Moped Parking Study
Recommended Additional Rack Locations
Map C-8: State Street, 100 Block**



Downtown Bicycle & Moped Parking Study
Recommended Additional Rack Locations
Map C-9: N Carroll Street, 10 Block



Downtown Bicycle & Moped Parking Study
Recommended Additional Rack Locations
Map C-10: E Main Street, 10 Block



ID: 14
Wheelwell, single
sided, 5 bikes

ID: 15
Wheelwell, single
sided, 3 bikes

North Arrow

Feet

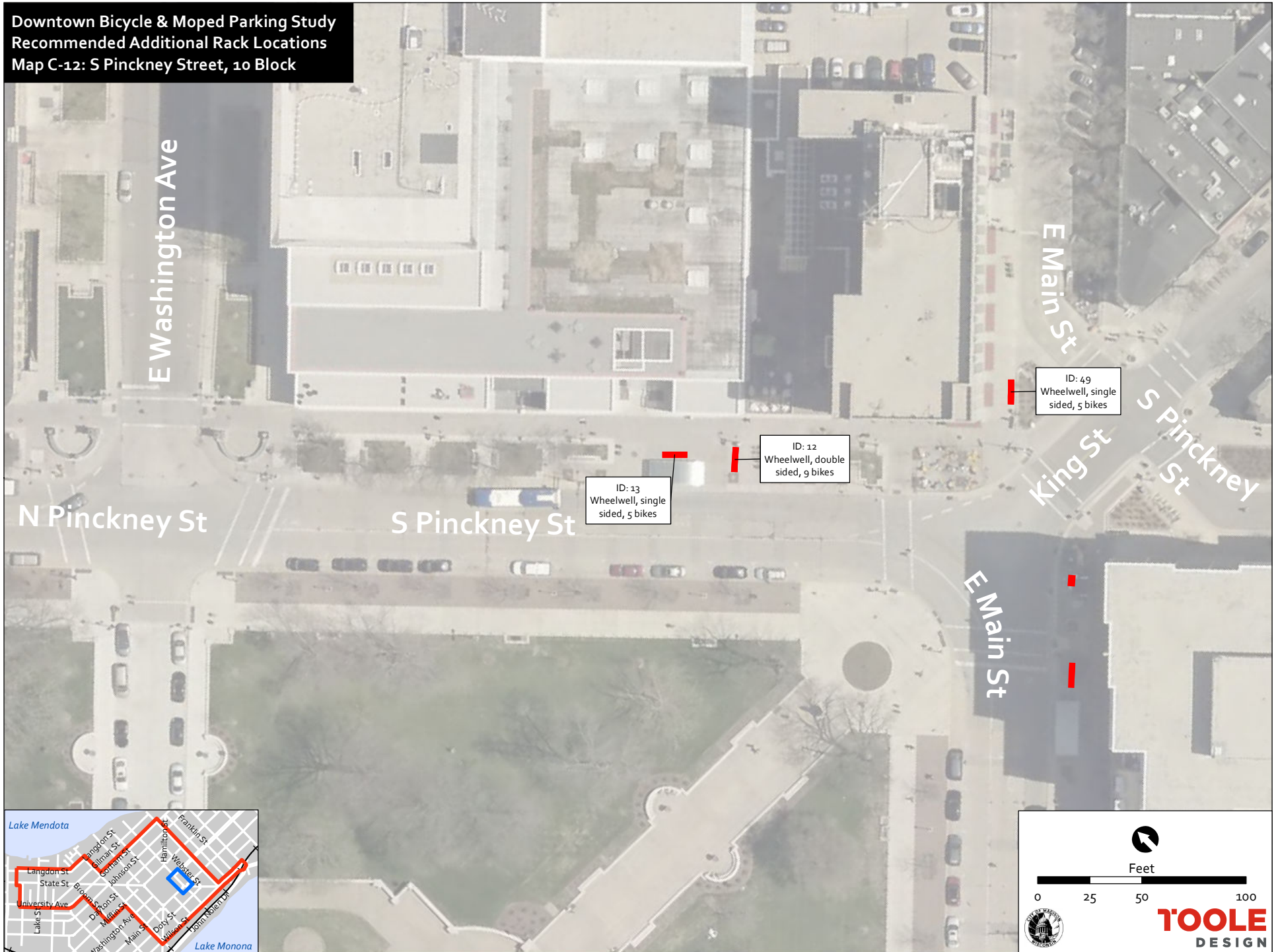
0 25 50 100

TOOLE
DESIGN

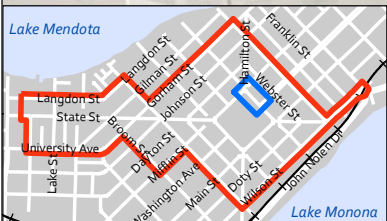
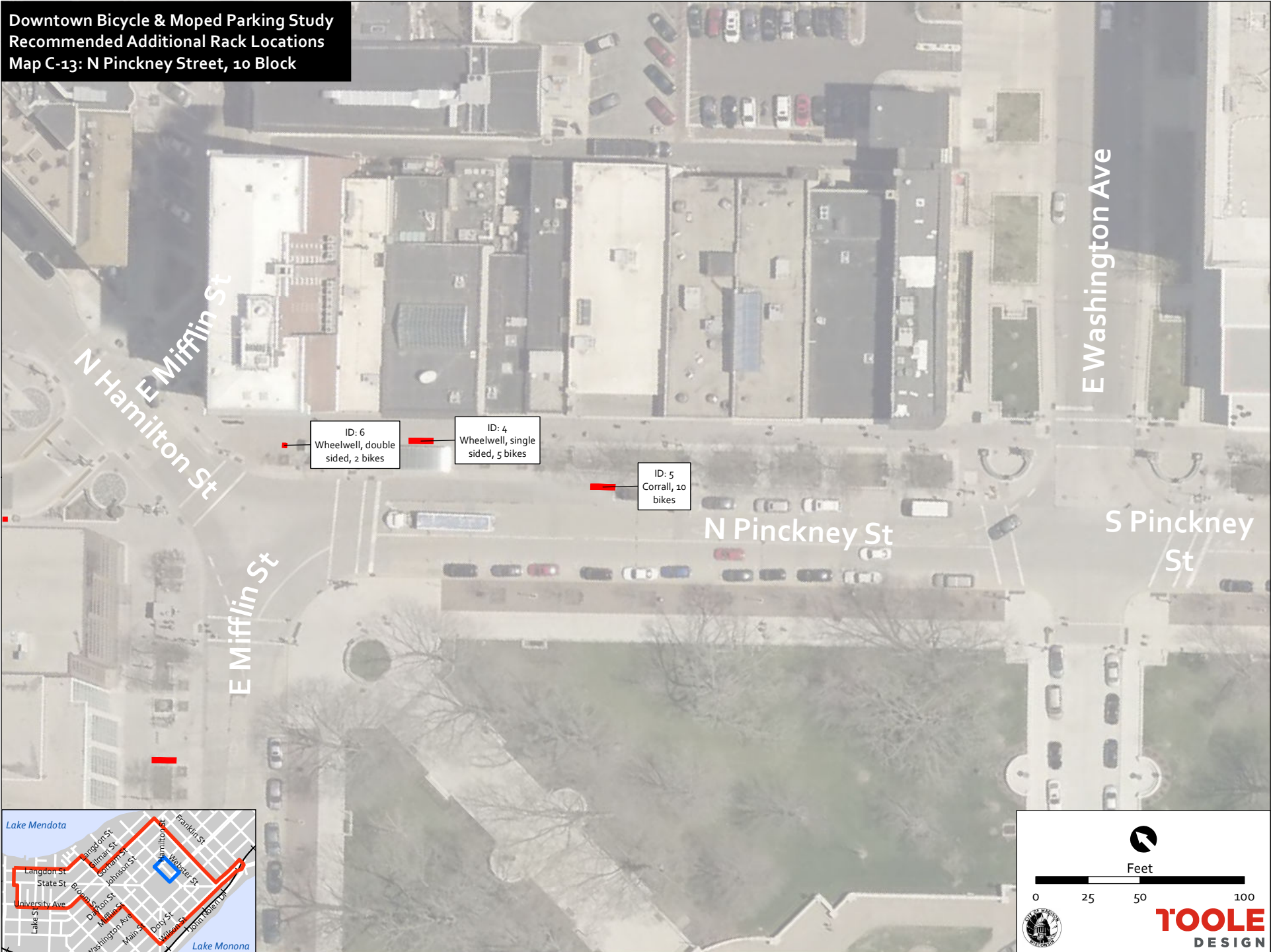
Downtown Bicycle & Moped Parking Study
Recommended Additional Rack Locations
Map C-11: King Street, 100 Block



Downtown Bicycle & Moped Parking Study
Recommended Additional Rack Locations
Map C-12: S Pinckney Street, 10 Block



**Downtown Bicycle & Moped Parking Study
Recommended Additional Rack Locations
Map C-13: N Pinckney Street, 10 Block**

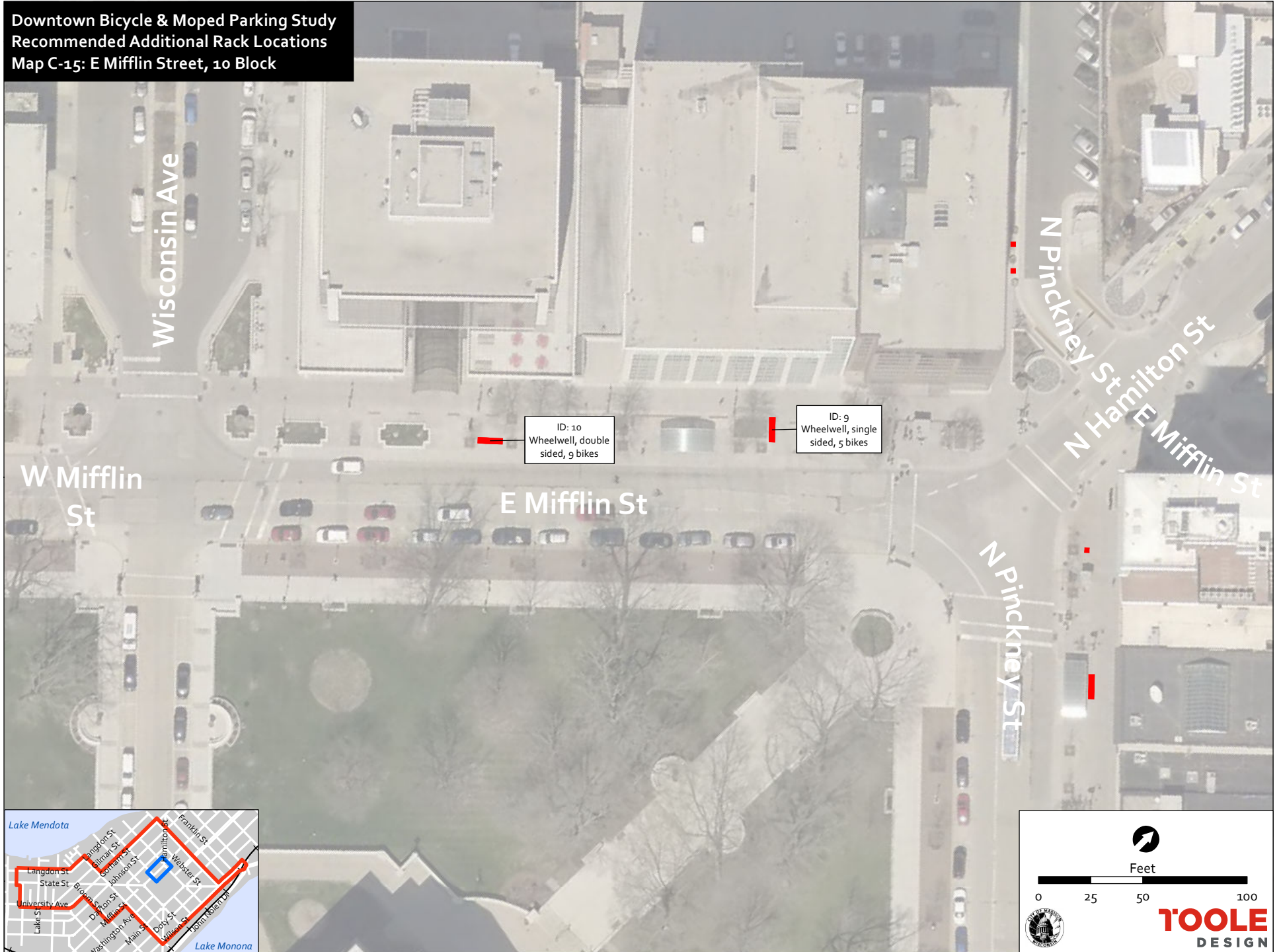


Downtown Bicycle & Moped Parking Study
Recommended Additional Rack Locations
Map C-14: N Pinckney Street, 100 Block



Feet
0 15 30 60
TOOLE
DESIGN

Downtown Bicycle & Moped Parking Study
Recommended Additional Rack Locations
Map C-15: E Mifflin Street, 10 Block



**Downtown Bicycle & Moped Parking Study
Recommended Additional Rack Locations
Map C-16: W Mifflin Street, 10 Block**

