

The Edgewater

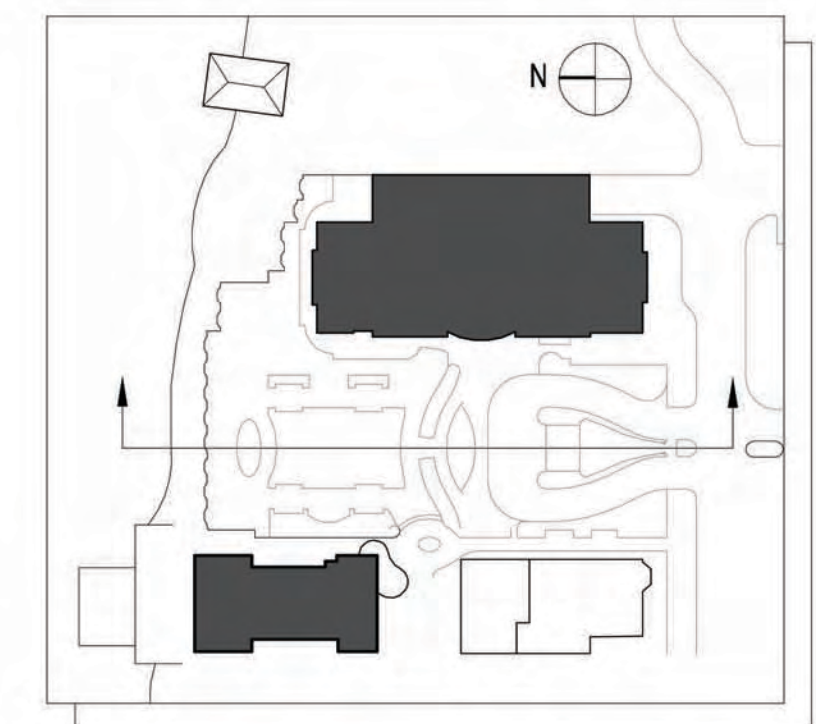
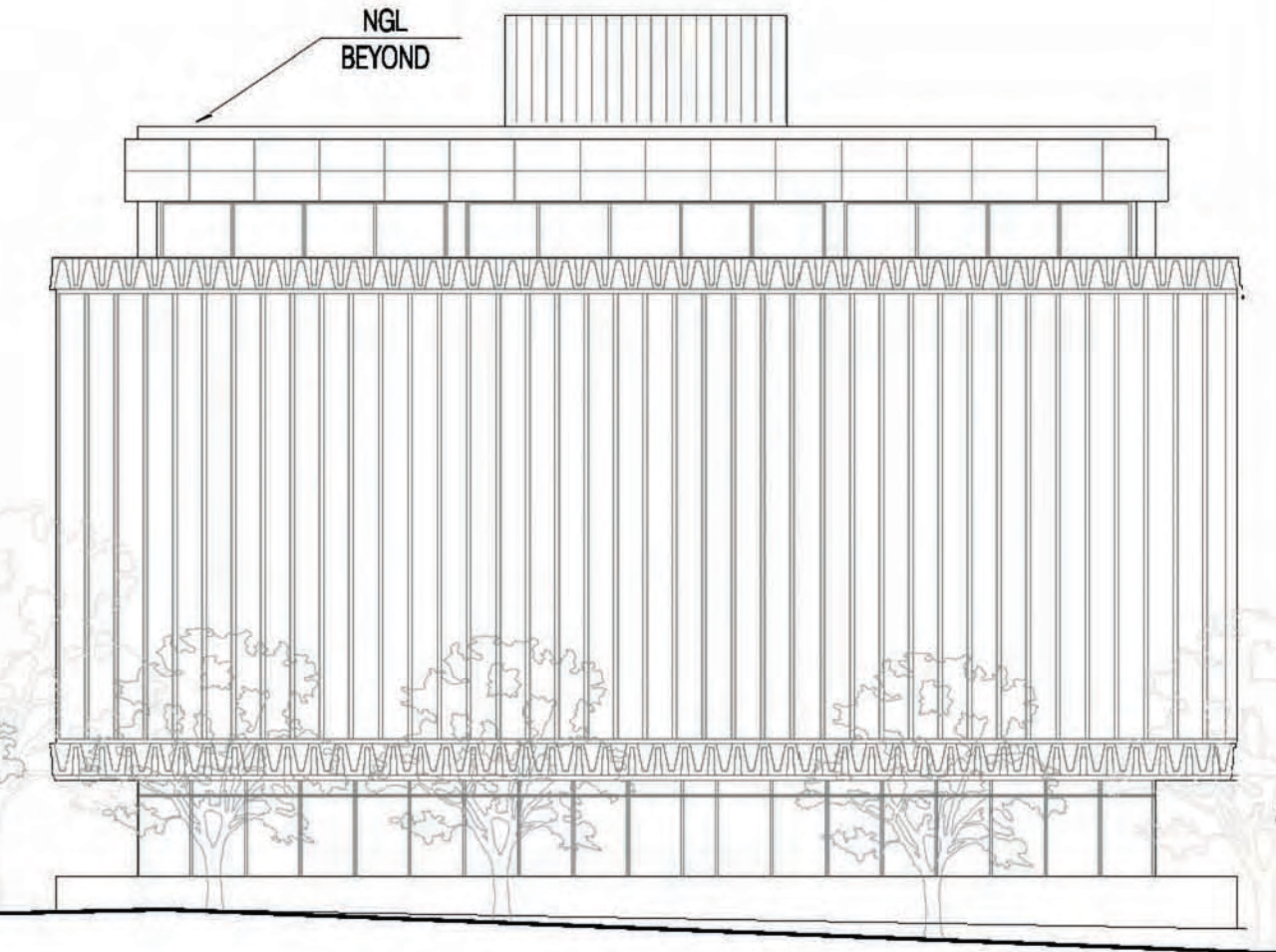
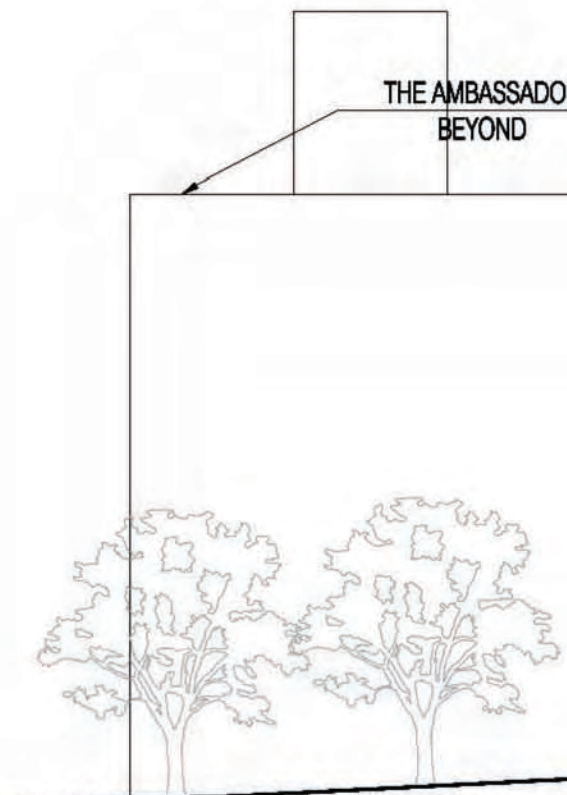
666 Wisconsin Avenue
Madison, WI 53703

Owner:
Landmark X, LLC
22 East Mifflin Street, Suite 800
Madison, WI 53703

Developer:
Hammes Company
22 East Mifflin Street, Suite 800
Madison, WI 53703

Civil Engineer:
BT², Inc.
2830 Dairy Drive
Madison, WI 53718

Landscape Architect:
Ken Saiki Design, Inc.
303 S. Patterson, Suite One
Madison, WI 53703



Plan Diagram

2 Illustrative Building Base Elevation
SCALE: 1"=20'-0"

PROJECT NUMBER: 08105.00

DATE: January 27, 2010

REVISIONS:

SCALE: 1"= 20'-0"

DRAWING NAME:

**Base Elevation
and Perspective**

DRAWING NUMBER:

A2.05