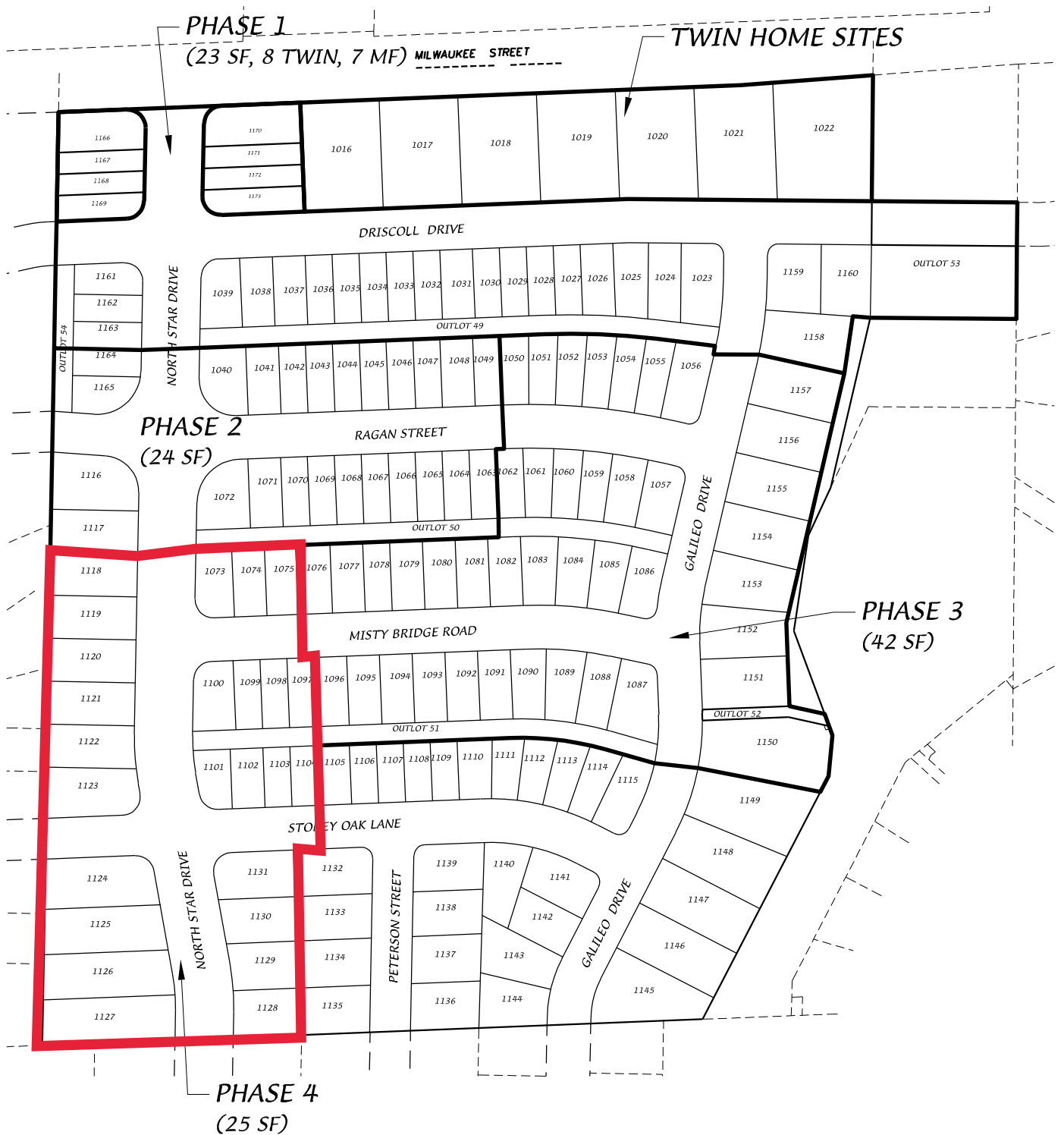


Northeast Addition to Grandview Commons Phase 4
Contract: 8974, Project: 13301
Location Map



Grandview Commons Northeast Addition - Phase Map



D'ONOFRIO KOTTKE AND ASSOCIATES, INC.

7530 Westward Way, Madison, WI 53717
 Phone: 608.833.7530 • Fax: 608.833.1089
 YOUR NATURAL RESOURCE FOR LAND DEVELOPMENT



0 200



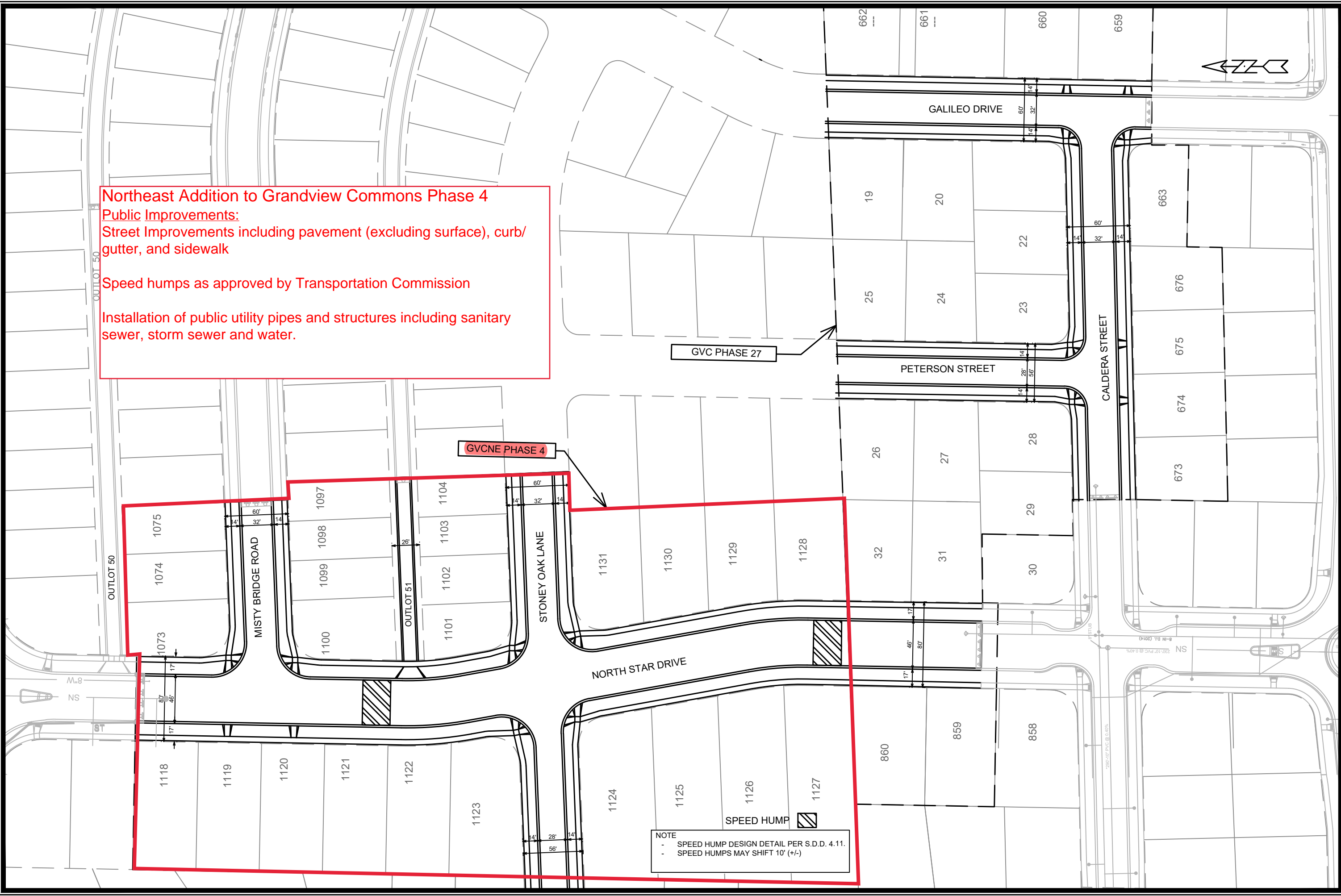
Scale 1" = 200'

DATE: 08-31-20
 F.N.: 19-05-144
 REV.


DRAWN BY:

U:/USER/1707115/DRAWINGS/PHASE MAP.DWG

Northeast Addition to Grandview Commons Phase 4
Public Improvements:
 Street Improvements including pavement (excluding surface), curb/gutter, and sidewalk
 Speed humps as approved by Transportation Commission
 Installation of public utility pipes and structures including sanitary sewer, storm sewer and water.



NOTE
 - SPEED HUMP DESIGN DETAIL PER S.D.D. 4.11.
 - SPEED HUMPS MAY SHIFT 10' (+/-)

STREET EXHIBIT		13301 & 13299
GVCNE PHASE 4 & GVC PHASE 27		MADISON, WI
M:\DESIGN\Projects\13301\CAD\Streets\13301-EN-Street\Network.dwg		CONTRACT NO: ---
		13301 13299
MARK	REVISION #1	DATE
Designed By: IO	Date: 12/17/2020 10:43 AM	Scale: 1:80
IO	4-2-19	BY