

Attachments C, D, and E

For

**Rain Garden and Median Planting Contract-
2012**

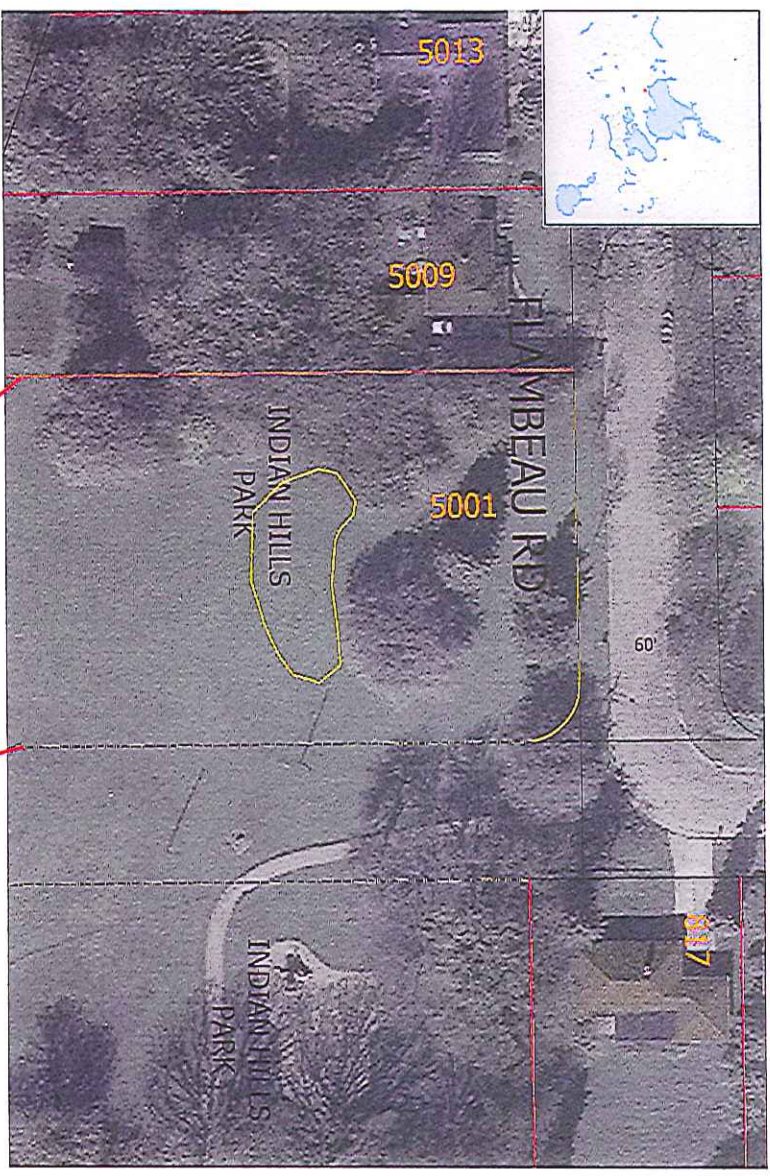
Project No. 53W1418

Issued by

City of Madison, Wisconsin

Engineering Division

Image below shows exact area of Indian hills Park area to be planted (in yellow)

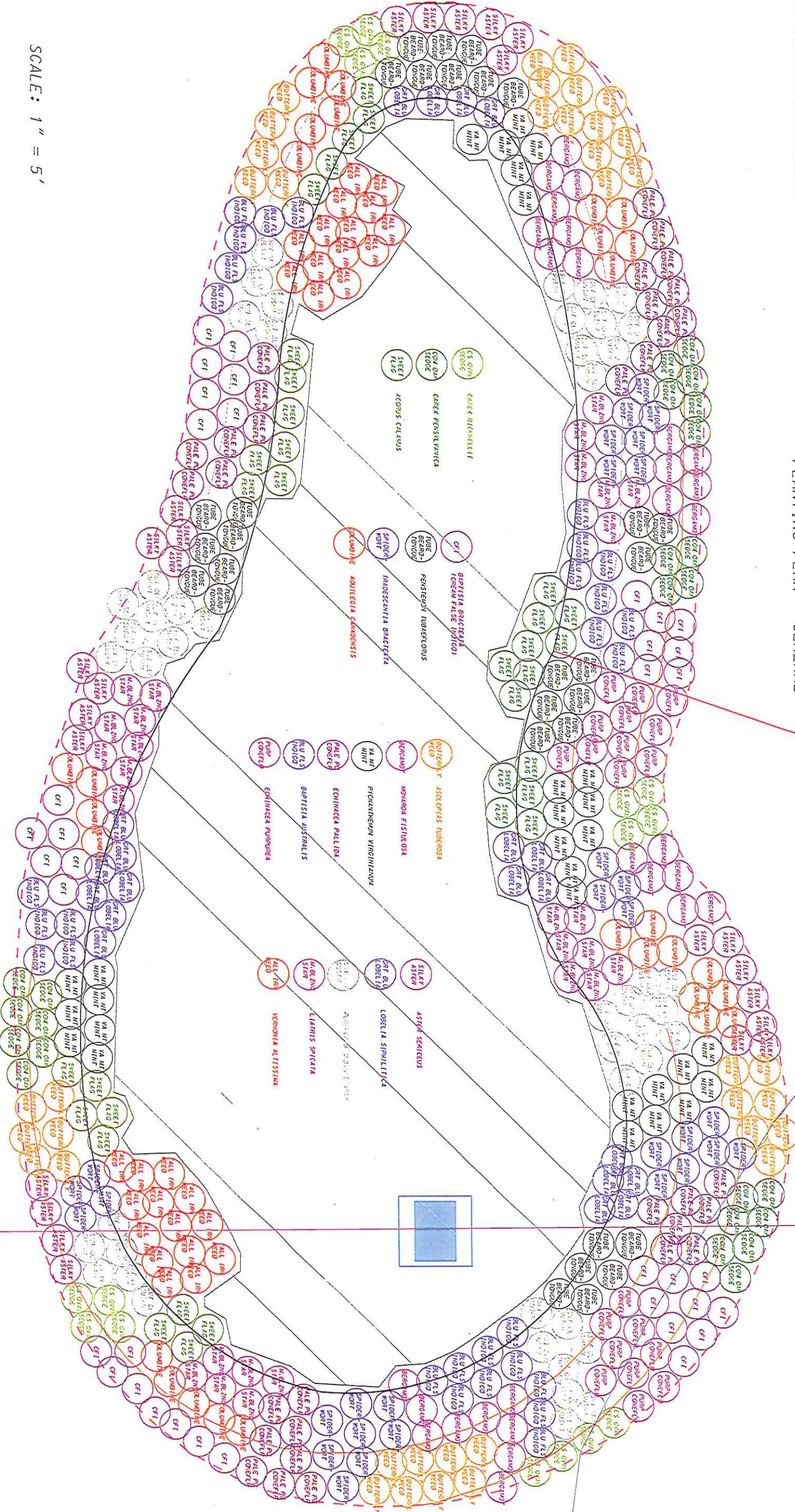


Red rectangle in above image shows general location of Indian Hills Park

INDIAN HILLS BIORETENTION PLANTING PLAN

Scientific Name	Common Name	Quantity	Size
<i>Aster Sericeus</i>	Silky Aster	25	2.5" Plug
<i>Lobelia Siphilitica</i>	Great Blue Lobelia	20	2.5" Plug
<i>Rudbeckia Subtomentosa</i>	Sweet Black Eyed Susan	47	2.5" Plug
<i>Liatis Spicata</i>	Morning Blazing Star	27	2.5" Plug
<i>Vernonia Altissima</i>	Tall Iron Weed	28	2.5" Plug
<i>Asclepias Tuberosa</i>	Butterfly Weed	38	2.5" Plug
<i>Monarda Fistulosa</i>	Wild Bergamot	29	2.5" Plug
<i>Pycnanthemum Virginianum</i>	Virginia Mountain Mint	21	2.5" Plug
<i>Echinacea Pallida</i>	Pale Purple Coneflower	31	2.5" Plug
<i>Baptisia Australis</i>	Blue False Indigo	28	2.5" Plug
<i>Echinacea Purpurea</i>	Purple Coneflower	20	2.5" Plug
<i>Baptisia Bracteata</i>	Cream False Indigo	37	2.5" Plug
<i>Penstemon Tubeflorus</i>	Tube Beardstongue	27	2.5" Plug
<i>Tradescantia Bracteata</i>	Spiderwort	30	2.5" Plug
<i>Aquilegia Canadensis</i>	Columbine	29	2.5" Plug
<i>Carex Bicknellii</i>	Copper Shouldered Oval Sedge	16	2.5" Plug
<i>Carex Pennsylvanica</i>	Common Oak Sedge	24	2.5" Plug
<i>Acorus Calamus</i>	Sweet Flag	32	2.5" Plug
Bioretention Floor			
<i>Iris Virginica</i>	Southern Blue Flag Iris	92	2.5" Plug
<i>Lobelia Cardinal</i>	Cardinal Flower	92	2.5" Plug
<i>Carex Comosa</i>	Bottle Brush Sedge	147	2.5" Plug
<i>Carex Stipata</i>	Awl Fruited Sedge	147	2.5" Plug
<i>Carex Vulpinoidea</i>	Fox Sedge	147	2.5" Plug
<i>Panicum Virgatum</i>	Switch Grass	147	2.5" Plug
<i>Sorghastrum Nutans</i>	Indian Grass	147	2.5" Plug

INDIAN HILLS PARK
PLANTING PLAN - GENERAL



SCALE: 1" = 5'

NOTE:

HATCHED AREA (920 SF) SHALL BE PLANTED IN EQUAL AMOUNTS OF:

- CAREX COMOSA (BOTTLEBRUSH SEDGE)
- CAREX STIPATA (AWL FRUITED SEDGE)
- CAREX VULPINOIDEA (FOX SEDGE)
- PANICUM VIRGATUM (SWITCH GRASS)
- SORGHASTRUM NUTANS (INDIAN GRASS)

ADDITIONALLY, LOBELIA CARDINALIS (CARDINAL FLOWER) AND IRIS VIRGINICA (SOUTHERN BLUE FLAG IRIS) SHALL BE INTERSPERCED IN THE GRASSES AT A RATIO OF 1:10 EACH.

Image below shows exact area of Spring Harbor Parking area to be planted (in yellow)

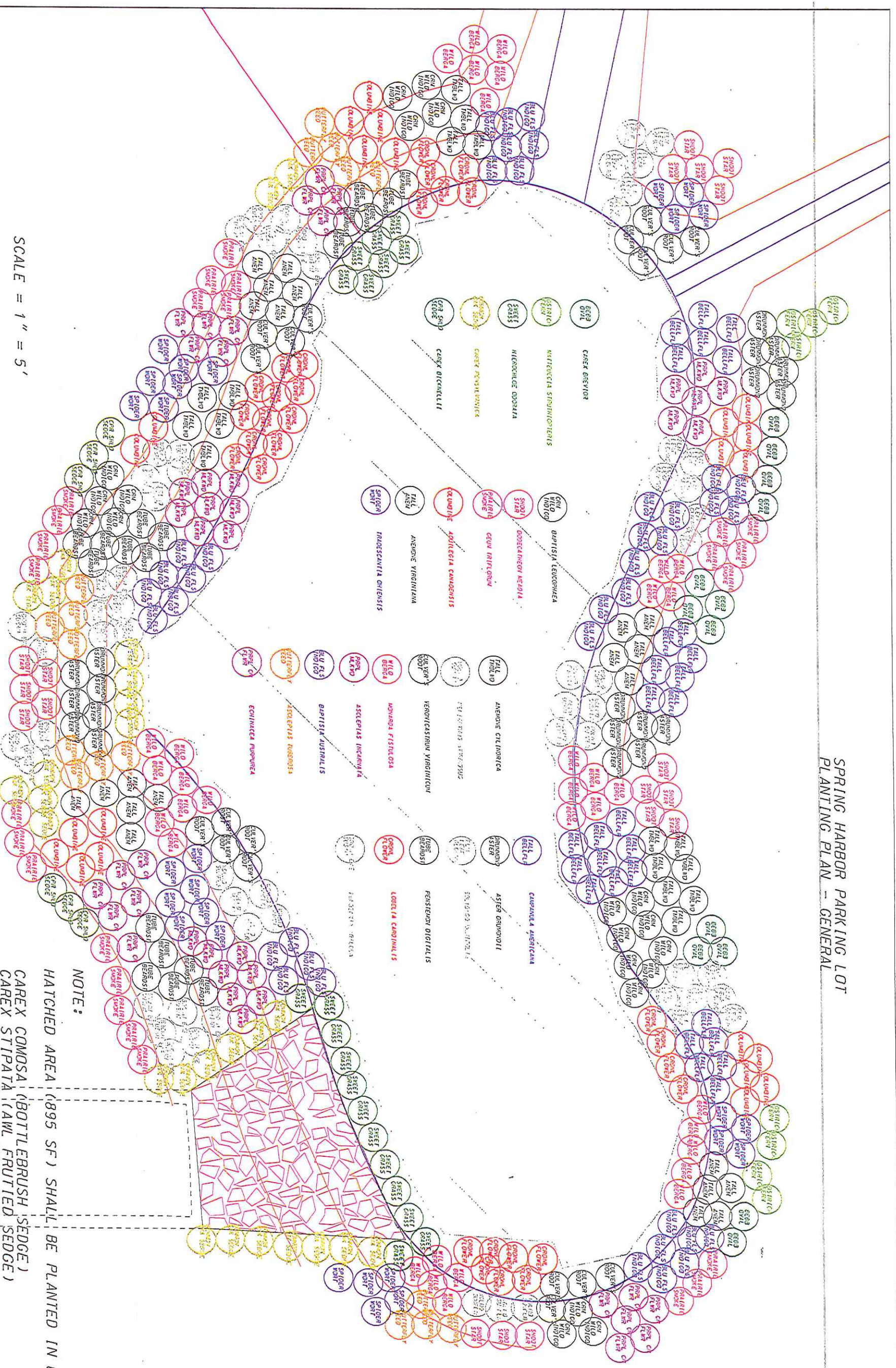


Red rectangle in above image shows general location of Spring Harbor Parking area

INDIAN HILLS BIORETENTION PLANTING PLAN

Scientific Name	Common Name	Quantity	Size
<i>Aster Sericeus</i>	Silky Aster	25	2.5" Plug
<i>Lobelia Siphilitica</i>	Great Blue Lobelia	20	2.5" Plug
<i>Rudbeckia Subtomentosa</i>	Sweet Black Eyed Susan	47	2.5" Plug
<i>Liatrix Spicata</i>	Morning Blazing Star	27	2.5" Plug
<i>Vernonia Altissima</i>	Tall Iron Weed	28	2.5" Plug
<i>Asclepias Tuberosa</i>	Butterfly Weed	38	2.5" Plug
<i>Monarda Fistulosa</i>	Wild Bergamot	29	2.5" Plug
<i>Pycnanthemum Virginianum</i>	Virginia Mountain Mint	21	2.5" Plug
<i>Echinacea Pallida</i>	Pale Purple Coneflower	31	2.5" Plug
<i>Baptisia Australis</i>	Blue False Indigo	28	2.5" Plug
<i>Echinacea Purpurea</i>	Purple Coneflower	20	2.5" Plug
<i>Baptisia Bracteata</i>	Creann False Indigo	37	2.5" Plug
<i>Penstemon Tubaeformis</i>	Tube Beardstongue	27	2.5" Plug
<i>Tradescantia Bracteata</i>	Spiderwort	30	2.5" Plug
<i>Aquilegia Canadensis</i>	Colubchine	29	2.5" Plug
<i>Carex Bicknellii</i>	Copper Shouldered Oval Sedge	16	2.5" Plug
<i>Carex Pensylvanica</i>	Common Oak Sedge	24	2.5" Plug
<i>Acorus Calamus</i>	Sweet Flag	32	2.5" Plug
Bioretention Floor			
<i>Iris Virginica</i>	Southern Blue Flag Iris	92	2.5" Plug
<i>Lobelia Cardinal</i>	Cardinal Flower	92	2.5" Plug
<i>Carex Comosa</i>	Bottle Brush Sedge	147	2.5" Plug
<i>Carex Stipata</i>	Awl Fruited Sedge	147	2.5" Plug
<i>Carex Vulpinoidea</i>	Fox Sedge	147	2.5" Plug
<i>Panicum Virgatum</i>	Switch Grass	147	2.5" Plug
<i>Sorghastrum Nutans</i>	Indian Grass	147	2.5" Plug

SPRING HARBOR PARKING LOT
PLANTING PLAN - GENERAL



SCALE = 1" = 5'

NOTE:

HATCHED AREA (895 SF) SHALL BE PLANTED IN EQUAL AMOUNTS OF:

- CAREX COMOSA (BOTTLEBRUSH SEDGE)
- CAREX STIPATA (AWL FRUITED SEDGE)
- CAREX VULPINOIDEA (FOX SEDGE)
- Panicum VIRGATUM (SWITCH GRASS)
- Sorghastrum NUTANS (INDIAN GRASS)

ADDITIONALLY, IRIS VERSICOLOR OR (NORTHERN BLUE FLAG IRIS) SHALL BE INTERSPERGED IN THE GRASSES AT A RATIO OF 1:10 EACH.

GREENING LANE

SPRING HARBOR PARKING LOT
PLANTING PLAN

GRADING LIMITS

8" STORM PIPE

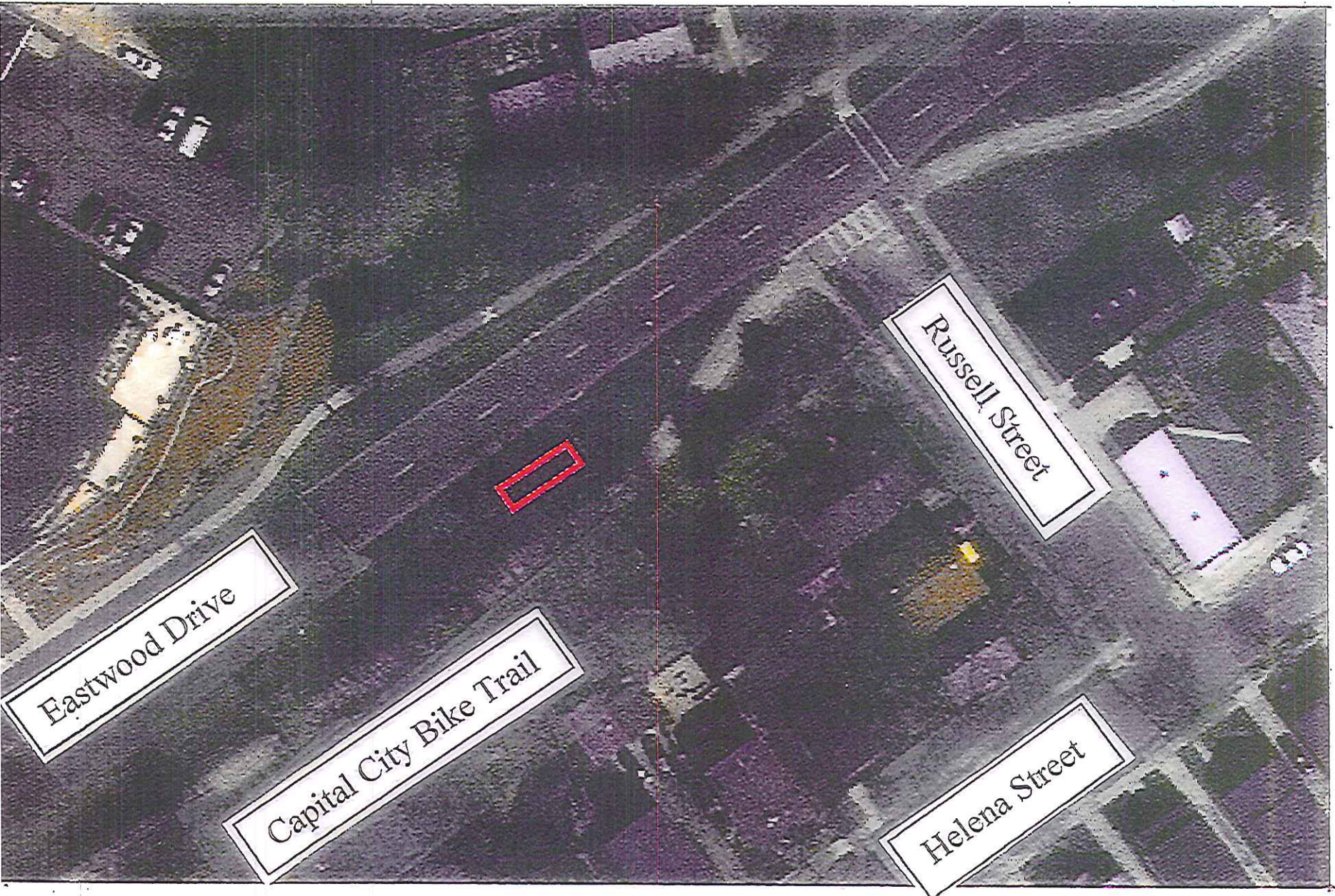
SCALE = 1" = 10'

NOTE:

CROSS-HATCHED AREA (1025 SF) SHALL BE PLANTED IN EQUAL AMOUNTS OF:

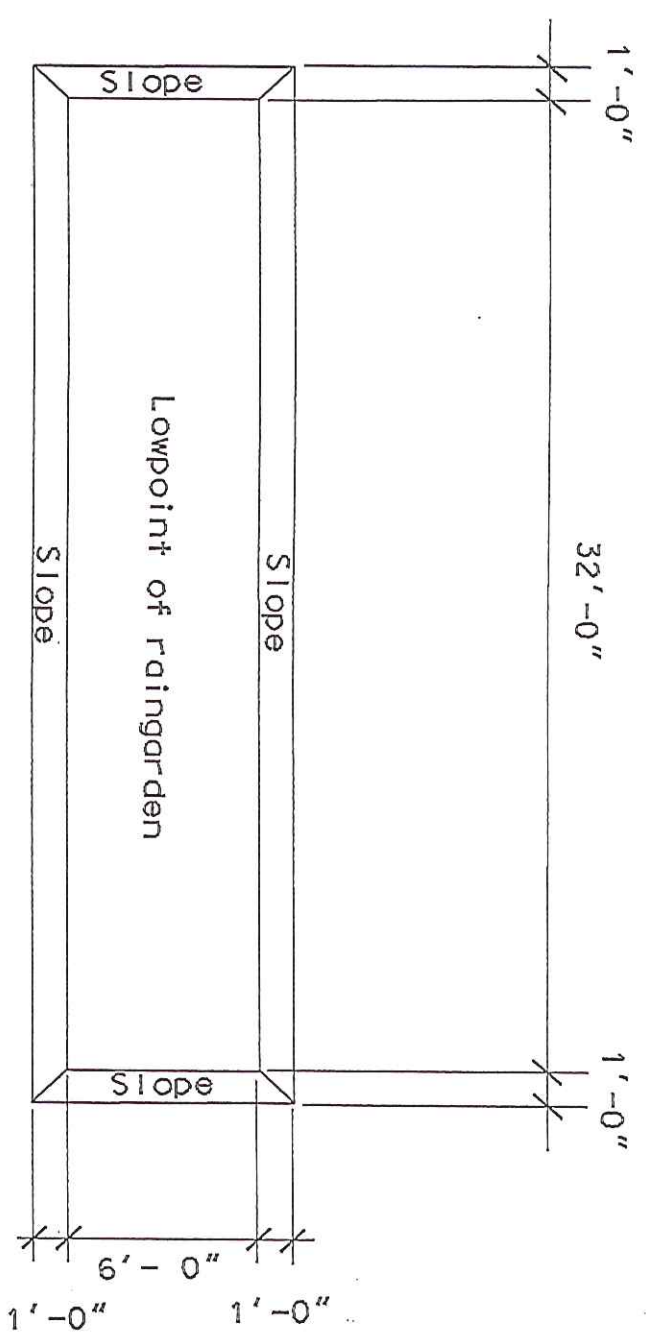
- CAREX BEBBII (BEBB'S SEDGE)
- JUNCUS TORREYI (TORREY'S RUSH)
- CAREX CRINITA (FRINGED SEDGE)
- CAREX STIPATA (AWL FRUITED SEDGE)
- CAREX PENSYLVANICA (COMMON OAK SEDGE)

ADDITIONALLY, IRIS VERSICOLOR (NORTHERN BLUE FLAG IRIS) SHALL BE INTERSPERCED IN THE GRASSES AT A RATIO OF 1:10 EACH.

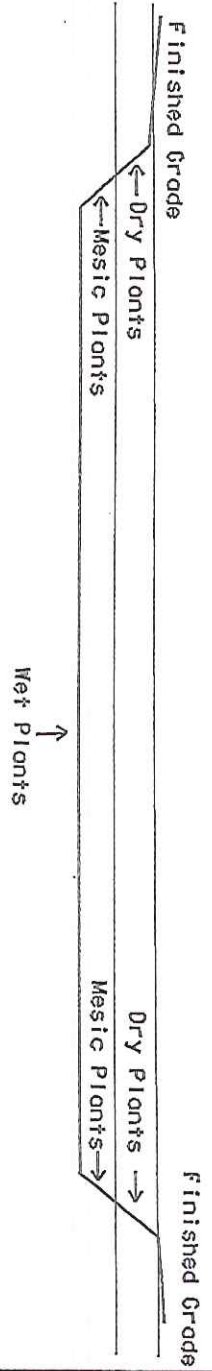


Planting Plan for Russell Street Raingarden

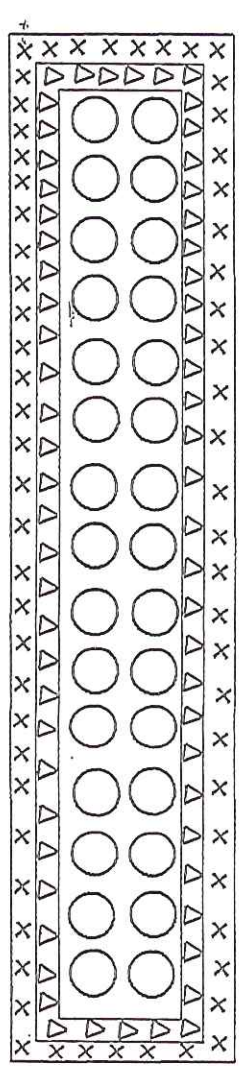
Plan View Not to Scale



Section View Not to Scale



Raingarden Planting Detail Plan View Not to Scale



Legend

- O Wet plants 192
- Δ Mestic plants 144
- x Dry plants 144

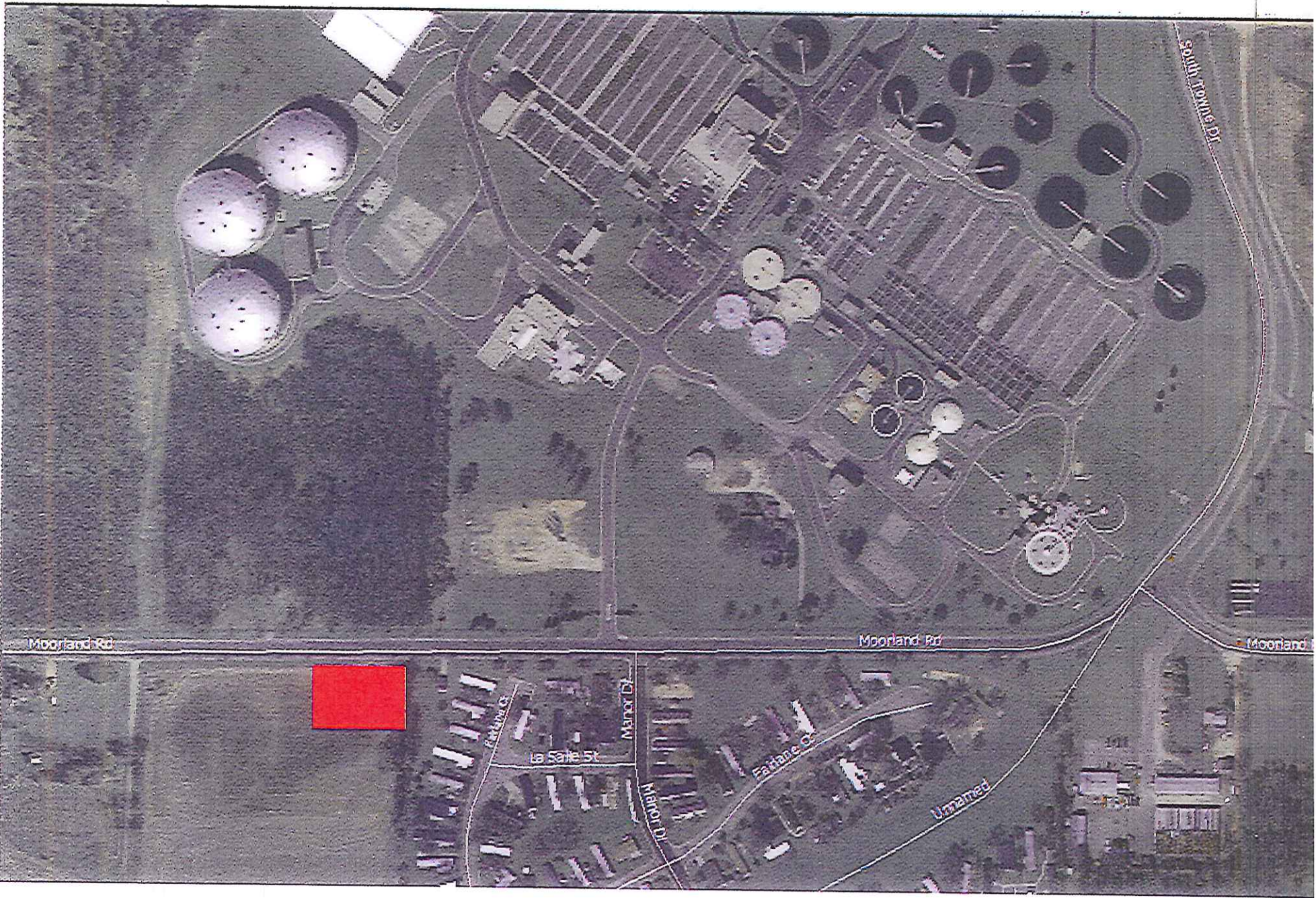
Plant Schedule

Plant Total
480

Plant Name	Scientific Name	Quantity	Size
Wet			
Blue Flag Iris	Iris versicolor	48	4" plug
Sand Coreopsis	Coreopsis lanceolata	48	4" plug
Marsh Blazing Star	Liatris spicata	48	4" plug
Prairie Dropseed	Sporobolus heterolepis	48	4" plug
Mestic			
Sky Blue Aster	Aster azureus	48	4" plug
Tussock Sedge	Carex stricta	48	4" plug
Showy Goldenrod	Solidago speciosa	48	4" plug
Dry			
Wholesale Rosinweed	Silphium integrifolium	48	4" plug
Little Blue Stem	Schizachyrium scoparium	48	4" plug
Wild Columbine	Aquilegia canadensis	48	4" plug

Additional Scope of Work

- 4 (four) Cubic Yards of mulch to cover planting 3" deep
- 3 (three) waterings after installation



Location of Moorland Rd. Raingarden (red rectangle)

PLANTING SCHEDULE				Page 1	
COMMON PLANT NAME	SCIENTIFIC NAME	Planting Zone	CALIPER, HGT., SPREAD, SIZE	Q	Y
FORBS					
New England Aster	Aster novae-angliae	Wet	2.5" Plug		57
Great Angelica	Angelica atropurpurea	Wet	2.5" Plug		57
Red Milkweed	Asclepias incarnata	Wet	2.5" Plug		57
Paincled Aster	Aster simplex	Wet	2.5" Plug		57
Sweet Indian Plantain	Cacalis suaveolens	Wet	2.5" Plug		57
Wild Senna	Cassia hebecarpa	Wet	2.5" Plug		57
Spotted Joe Pye Weed	Eupatorium maculatum	Wet	2.5" Plug		57
Boneset	Eupatorium Perfoliatum	Wet	2.5" Plug		57
Bottle Gentian	Gentian andrewsii	Wet	2.5" Plug		57
Bottle Gentian	Gentiana andrewsii	Wet	2.5" Plug		57
Sneezeweed	Helenium autumnale	Wet	2.5" Plug		57
Blue Flag Iris	Iris virginica	Wet	2.5" Plug		59
Marsh Blazing Star	Liatris apicata	Wet	2.5" Plug		57
Prairie Blazing Star	Liatris pycnostachya	Wet	2.5" Plug		57
Cardinal Flower	Lobelia cardinalis	Wet	2.5" Plug		57
Great Blue Lobelia	Lobelia siphilitica	Wet	2.5" Plug		57
Glade Mallow	Napaea dioica	Wet	2.5" Plug		57
Evening Primrose	Oenothera biennis	Wet	2.5" Plug		57
Smooth penstemon	Penstemon digitalis	Wet	2.5" Plug		57
Mountain Mint	Pycnanthemum virginianum	Wet	2.5" Plug		57
Cup Plant	Silphium perfoliatum	Wet	2.5" Plug		57
Ohio Goldenrod	Solidago ohioensis	Wet	2.5" Plug		57
Riddell's Goldenrod	Solidago riddellii	Wet	2.5" Plug		57
Purple Meadow Rue	Thalictrum disycarpum	Wet	2.5" Plug		57
Ironweed	Vernonia fasciculata	Wet	2.5" Plug		57
PAGE SUBTOTAL					1427

Native Grasses/Forbs in Medians

Parcel II

PLANTING SCHEDULE					Page 2
PLANT NAME	Scientific Name	Planting Zone	CALIPER, HGT, SPREAD, SIZE	q + y	
Grasses					
Fringed Brome	Bromus ciliatus	Wet	2.5" Plug	58	
Wool Reed Grass	Cinna arundinacea	Wet	2.5" Plug	58	
River Bank Wild Rye	Elymus riparius	Wet	2.5" Plug	58	
Rattlesnake Grass	Glyceria canadensis	Wet	2.5" Plug	58	
Prairie Cord Grass	Spartina pectinata	Wet	2.5" Plug	58	
Sedges					
Bebb's Sedge	Carex bebbii	Wet	2.5" Plug	58	
Bristly Sedge	Carex Comosa	Wet	2.5" Plug	58	
Fringed Sedge	Carex crinita	Wet	2.5" Plug	58	
Bottlebrush Sedge	Carex hystericina	Wet	2.5" Plug	58	
Fox Sedge	Carex stipata	Wet	2.5" Plug	58	
Brown Fox Sedge	Carex vulpinoidea	Wet	2.5" Plug	58	
Dark Green Bulrush	Scirpus atrovirens	Wet	2.5" Plug	58	
Wool-grass	Scirpus cyperinus	Wet	2.5" Plug	58	
Great Bulrush	Scirpus validus	Wet	2.5" Plug	58	
FORBS					
Wild Columbine	Aquilegia canadensis	Mesic	2.5" Plug	14	
Purple Milkweed	Asclepias purpurascens	Mesic	2.5" Plug	14	
Lavender Hyssop	Agastache foeniculum	Mesic	2.5" Plug	14	
Purple Hyssop	Agastachescrophulariaefolia	Mesic	2.5" Plug	14	
Nodding Park Onion	Allium cenum	Mesic	2.5" Plug	14	
Arrow-leaved Aster	Aster sagittifolius	Mesic	2.5" Plug	14	
PAGE SUBTOTAL				896	

Native Grasses/Forbs in Medians

Page 12

PLANTING SCHEDULE					Page 3
PLANT NAME	Scientific Name	Planting Zone	CALIPER, HGT, SPREAD, SIZE		
Downy Wood Mint	Blephilia ciliata	Mesic	2.5" Plug		13
Hairy Wood Mint	Blephilia hirsuta	Mesic	2.5" Plug		13
Drummond's Aster	Aster drummondii	Mesic	2.5" Plug		14
Frost Aster	Aster pilosus	Mesic	2.5" Plug		14
Purple Coneflower	Echinacea purpurea	Mesic	2.5" Plug		14
Woodland Sunflower	Helianthus strumosus	Mesic	2.5" Plug		14
Early Sunflower	Helianthus helianthoides	Mesic	2.5" Plug		14
Rattlesnake Master	Eryngium yuccifolium	Mesic	2.5" Plug		14
Purple Joe Pye Weed	Eupatorium purpureum	Mesic	2.5" Plug		14
Meadow Blazing Star	Liatris lygulistylis	Mesic	2.5" Plug		14
Evening Primrose	Oenothera biennis	Mesic	2.5" Plug		14
Wild Quinine	Parthenium integrifolium	Mesic	2.5" Plug		13
Wild Golden Glow	Rudbeckia laciniata	Mesic	2.5" Plug		13
Sweet Black-eyed Susan	Rudbeckia subtomentosa	Mesic	2.5" Plug		13
Brown-eyed Susan	Rudbeckia triloba	Mesic	2.5" Plug		13
Obedient Plant	Physostegia virginiana	Mesic	2.5" Plug		13
Black-eyed Susan	Rudbeckia hirta	Mesic	2.5" Plug		14
Prairie-dock	Silphium terebinthinaceum	Mesic	2.5" Plug		14
Culver's Root	Vernonicastrum virginicum	Mesic	2.5" Plug		14
Ziza Alexander	Zizia aurea	Mesic	2.5" Plug		14
Canada Milk Vetch	Astragalus canadensis	Mesic	2.5" Plug		13
Blue Wild Indigo	Baptisia australis	Mesic	2.5" Plug		14
White Wild Indigo	Baptisia leucantha	Mesic	2.5" Plug		14
Canada Wild Rye	Elymus canadensis	Mesic	2.5" Plug		13
Silky Wild Rye	Elymus villosus	Mesic	2.5" Plug		13
Virginia Wild Rye	Elymus virginicus	Mesic	2.5" Plug		13
PAGE SUBTOTAL					353

Native Grasses/Forbs in Medians

09.02.13

PLANTING SCHEDULE					Page 4
PLANT NAME	Scientific Name	Planting Zone	CALIPER, HGT. SPREAD, SIZE	Quantity	
PLANTING SCHEDULE					
Grasses					
Prairie Brome	Bromus kalmii	Mesic	2.5" Plug	13	
Indian Grass	Sorghastrum nutans	Mesic	2.5" Plug	13	
Sedges					
Woodland Sedge	Carex sprengeii	Mesic	2.5" Plug	13	
FORBS					
Butterfly Weed	Asclepias tuberosa	DRY	2.5" Plug	15	
Native Yarrow	Achillea millefolium	DRY	2.5" Plug	15	
Silky Aster	Aster sericeus	DRY	2.5" Plug	15	
Heath Aster	Aster ericoides	DRY	2.5" Plug	15	
Smooth Blue Aster	Aster laevis	DRY	2.5" Plug	15	
Prairie Coreopsis	Coreopsis palmata	DRY	2.5" Plug	15	
Narrow-leaved Coneflower	Echinacea angustifolia	DRY	2.5" Plug	15	
Pale Purple Coneflower	Echinacea pallida	DRY	2.5" Plug	15	
Sand Coreopsis	Coreopsis lanceolata	DRY	2.5" Plug	15	
Prairie Smoke	Geum triflorum	DRY	2.5" Plug	15	
Western Sunflower	Helianthus occidentalis	DRY	2.5" Plug	15	
Flowering Spurge	Euphorbia corollata	DRY	2.5" Plug	15	
Rough Blazing star	Liatris aspera	DRY	2.5" Plug	15	
Prairie Alum Root	Heuchera richardsonii	DRY	2.5" Plug	14	
False Boneset	Kuhnia eupatorioides	DRY	2.5" Plug	15	
Dotted Mint	Monarda punctata	DRY	2.5" Plug	15	
Prairie Phlox	Phlox pilosa	DRY	2.5" Plug	15	
Wild Bergamot	Monarda fistulosa	DRY	2.5" Plug	15	
Wild petunia	Ruellia humilis	DRY	2.5" Plug	15	
Royal Catchfly	Silene regia	DRY	2.5" Plug	15	
Prairie Cinquefoil	Potentilla arguta	DRY	2.5" Plug	14	
PAGE SUBTOTAL				352	

Native Grasses/Forbs in Medians

Page 14

Page 15

PLANTING SCHEDULES					Page 5
PLANT NAME	Scientific Name		CALIPER, HGT., SPREAD, SIZE	Quantity	
Old-field Goldenrod	Solidago nemoralis	DRY	2.5" Plug	15	
Stiff Goldenros	Solidago rigida	DRY	2.5" Plug	15	
Rosin weed	Silphium integrifolium	DRY	2.5" Plug	15	
Compass Plant	Silphium laciniatum	DRY	2.5" Plug	15	
Prairie Violet	Viola pedatifida	DRY	2.5" Plug	15	
Heart-leaved Golden Aster	Zizia aptera	DRY	2.5" Plug	15	
Spiderwort	Tradescantia ohiensis	DRY	2.5" Plug	15	
Hoary vervain	Verbena stricta	DRY	2.5" Plug	15	
Spiderwort	Tradescantia ohiensis	DRY	2.5" Plug	15	
Illinois Bundle Flower	Desmanthus illinoensis	DRY	2.5" Plug	15	
Wild Lupine	Lupinus perennis	DRY	2.5" Plug	15	
Leadplant	Amorpha canescens	DRY	2.5" Plug	15	
Grasses					
Prairie Dropseed	Sporobolus heterolepis	DRY	2.5" Plug	15	
June Grass	koeleria cristata	DRY	2.5" Plug	15	
Switch Grass	Panicum virgatum	DRY	2.5" Plug	15	
PAGE SUBTOTAL					225
GRAND TOTAL					3,253.00

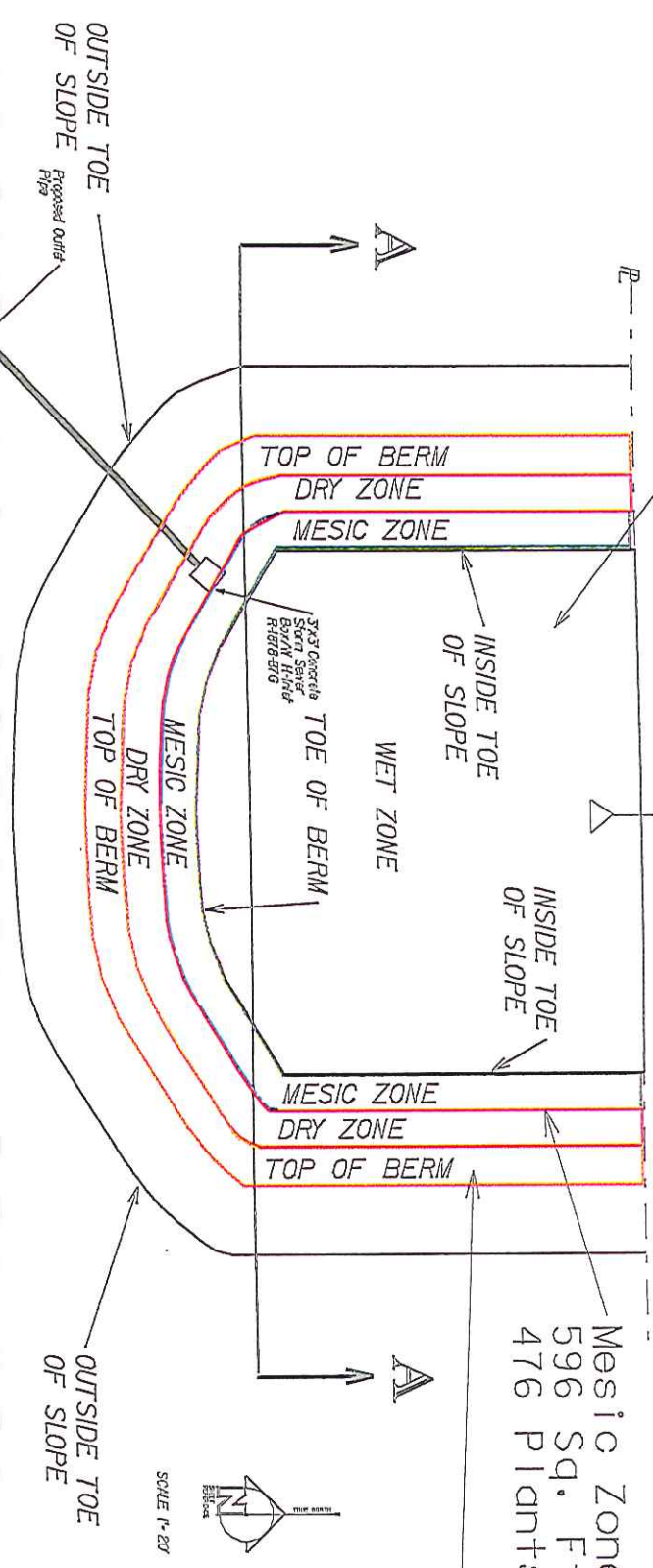
Native Grasses/Forbs in Medians

1521 MOORLAND ROAD

Wet Zone
2,799 Sq. Ft.
2,239 Plants

Mesic Zone
596 Sq. Ft.
476 Plants

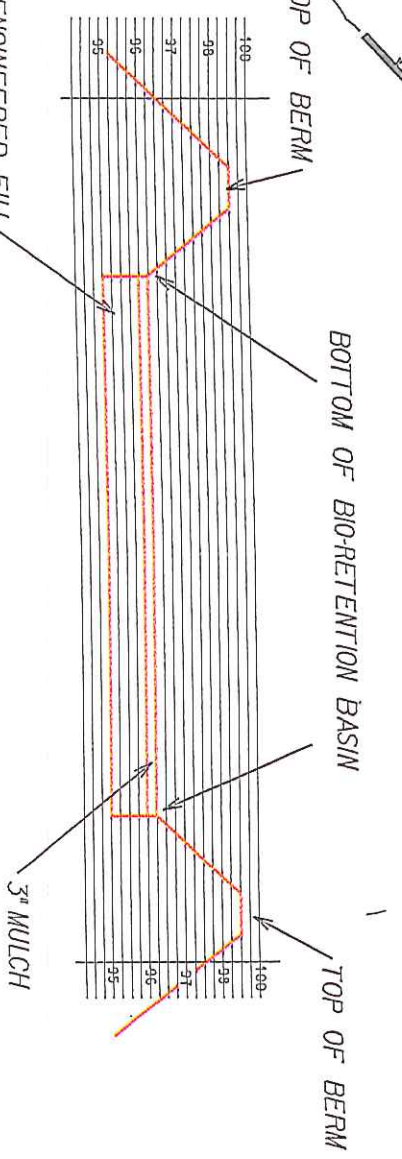
Dry Zone
673 Sq. Ft.
538 Plants



1 FOOT ENGINEERED FILL
40% SAND
40% COMPOST
20% TOPSOIL

SECTION A-A

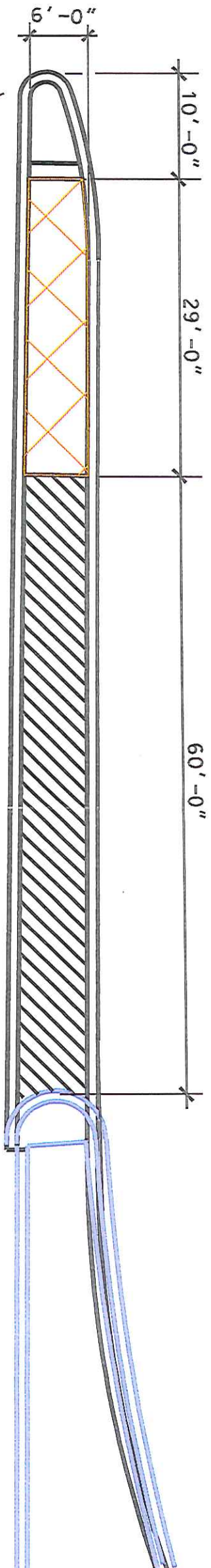
(DRAWN NOT TO SCALE)



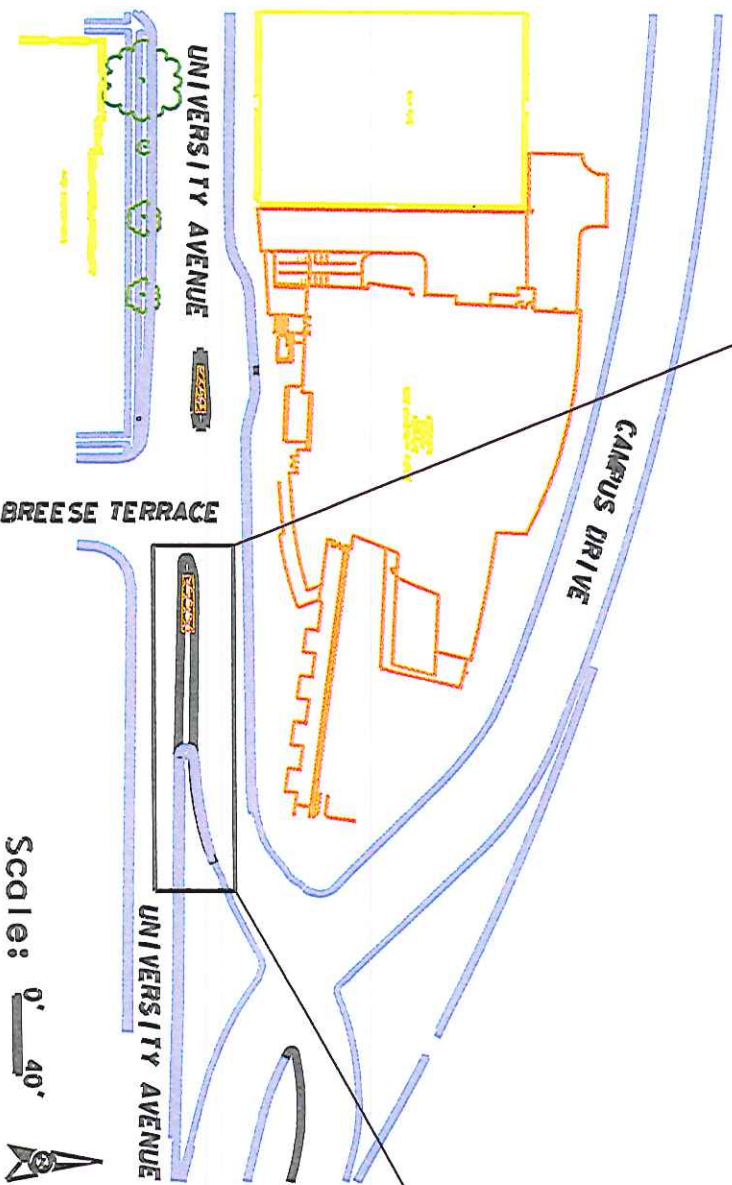
STATE PROJECT NUMBER	SHEET NO.
1521 MOORLAND ROAD - BIO-RETENTION BASIN	1
CITY OF MADISON WISCONSIN	

Typical Median Planting Detail

Not to Scale



NOTE: EACH PLANT SHALL BE SPACED 2'-3" APART



Scale: 0' = 40'



UNIVERSITY AVE/CAMPUS DRIVE/SCIENCE CENTER
 INTERSECTION RECONSTRUCTION - P.S.
 PROJECT NO. 55H931
 PLAN UNIVERSITY AVE CITY OF MADISON

Plant Schedule

Plant Name	Scientific Name	Size
Double Knock Out Rose	Rosa 'Radtko'	1 Gal.

Additional Scope of Work
 3.5 Cubic Yards of mulch to cover planting to curb 3" deep
 3 (three) waterings after installation

Legend

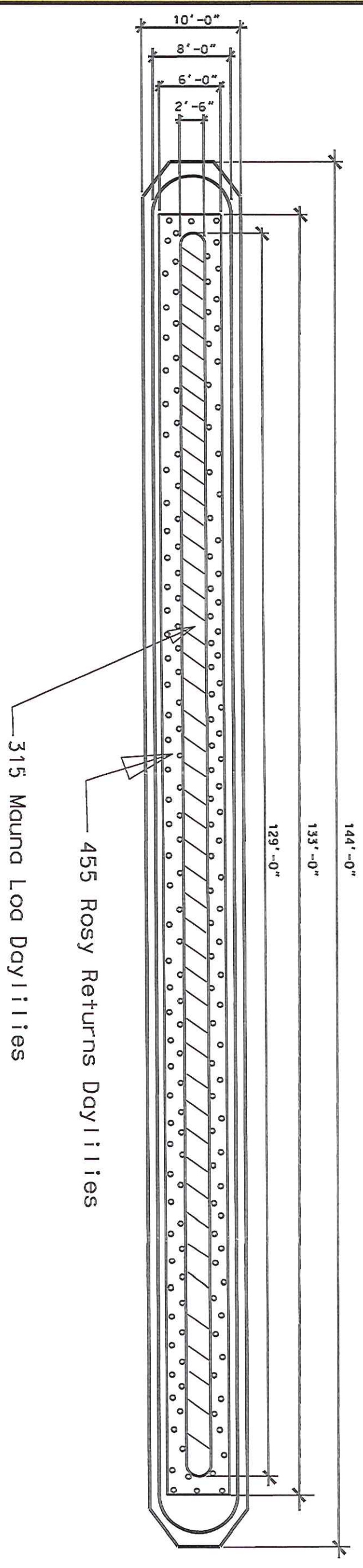
//// = Double Knock Out Rose Planting Area

Quantity 160

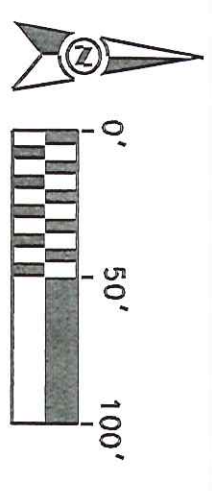
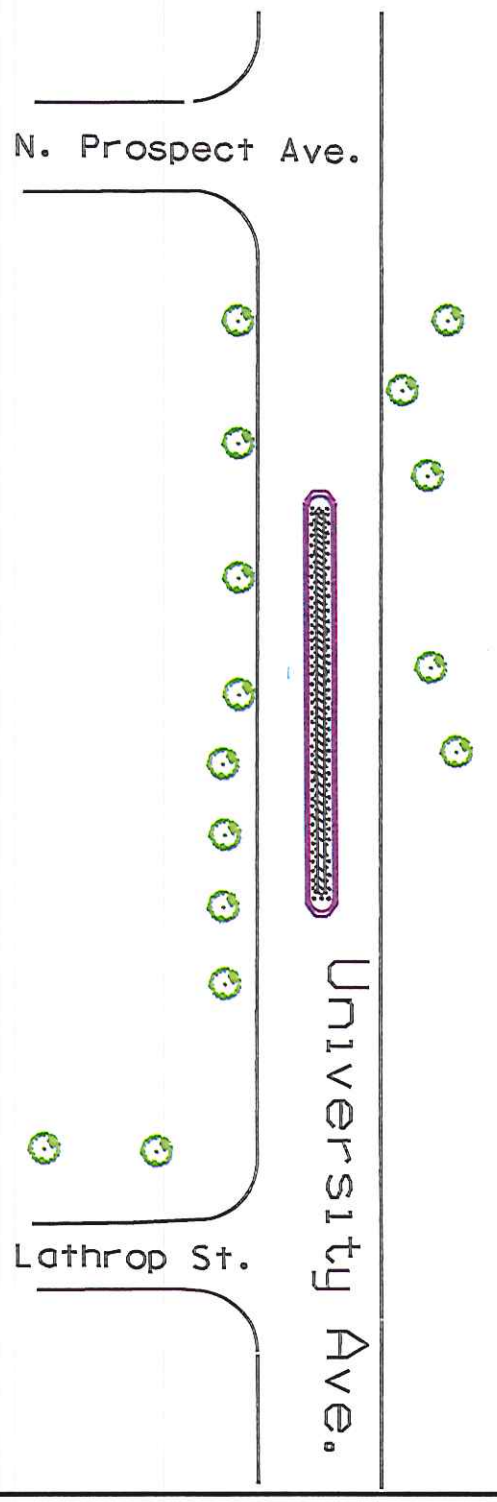
Typical Median Planting Detail

Not to Scale

Plan for University Ave. Median
between N. Prospect Ave. and
Lathrop St.
CITY OF MADISON



Median Location



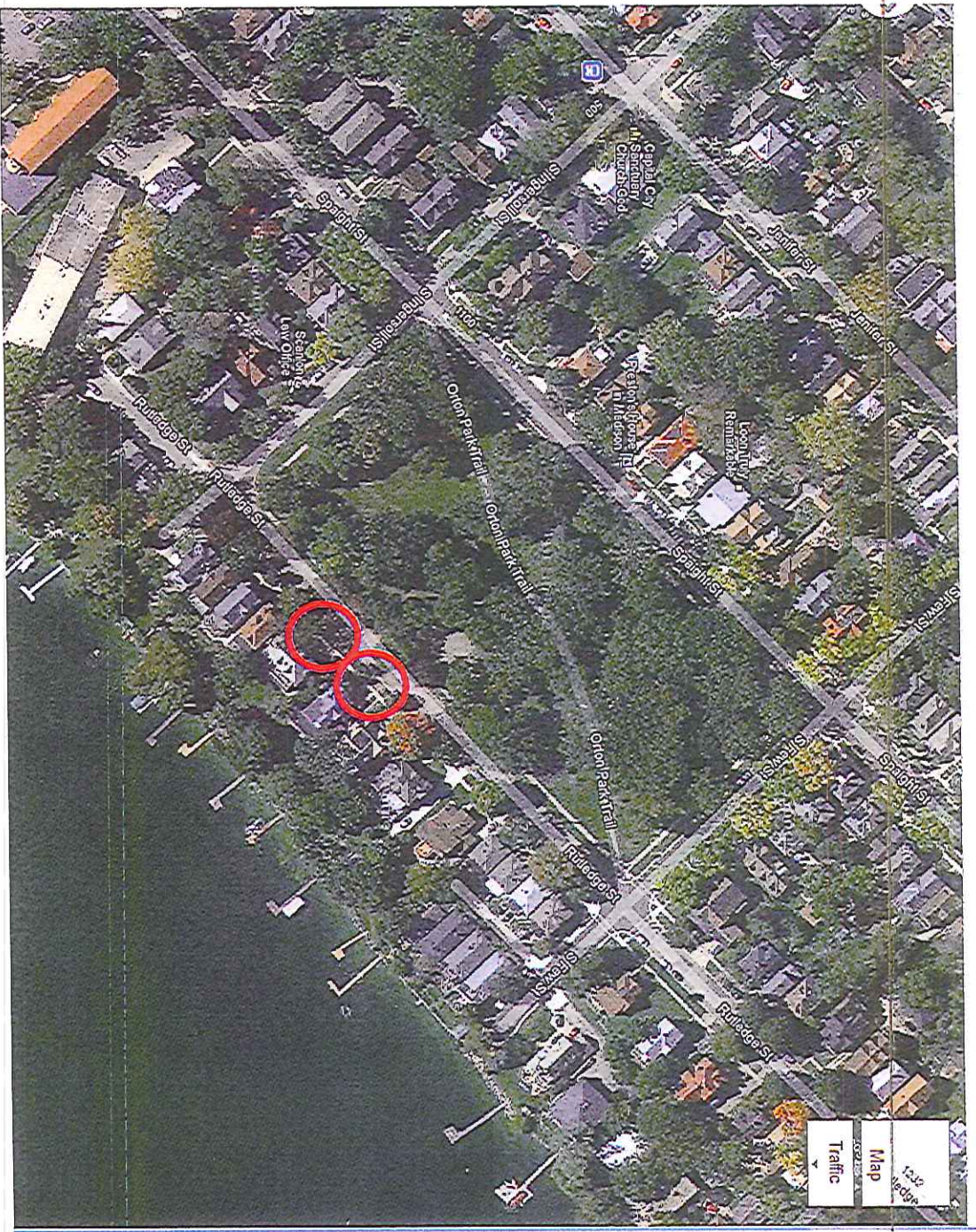
Plant Schedule

Plant Name	Scientific Name	Size
Mauna Loa Daylilies	Hemerocallis 'Mauna Loa'	1 Gal.
Rosy Returns Daylilies	Hemerocallis 'Rosy Returns'	1 Gal.

Additional Scope of Work
 7 (seven) Cubic Yards of mulch to cover planting 3" deep
 3 (three) waterings after installation

Legend

Symbol	Plant Name	Quantity
	Mauna Loa Daylilies	315
	Rosy Returns Daylilies	455



Red circles in above image show locations of 1115 and 1121 Rutledge Street Raingardens

1115 Rutledge St. Color-full Plant List

Scientific Name	Common Name	Quantity	Size
Dry Plants:			
<i>Campanula rotundifolia</i>	Harebell	6	2.5" Plug
<i>Asclepias tuberosa</i>	Butterfly Weed	6	2.5" Plug
<i>Carex pensylvanica</i>	Common Oak Sedge	6	2.5" Plug
<i>Aster sericeus</i>	Silky Aster	6	2.5" Plug
Medium Plants:			
<i>Allium cernuum</i>	Nodding Onion	6	2.5" Plug
<i>Zizia aurea</i>	Golden Alexanders	6	2.5" Plug
<i>Schizachyrium scoparium</i>	Little Bluestem	6	2.5" Plug
<i>Rudbeckia hirta</i>	Black-Eyed Susan	6	2.5" Plug
Wet Plants:			
<i>Solidago flexicaulis</i>	Zig Zag Goldenrod	6	2.5" Plug
<i>Iris shrevei</i>	Wild Iris	6	2.5" Plug
<i>Lobelia siphilitica</i>	Blue Lobelia	6	2.5" Plug
<i>Carex vulpinoidea</i>	Brown Fox Sedge	6	2.5" Plug

RAIN GARDEN PLANTS PARTIAL SHADE

3-6
Hours

color-full



HAREBELL (Jun-Sep)
Campanula rotundifolia



BUTTERFLY WEED (Jun-Aug)
Asclepias tuberosa

dry

medium



NODDING ONION (Jul-Aug)
Allium cernuum



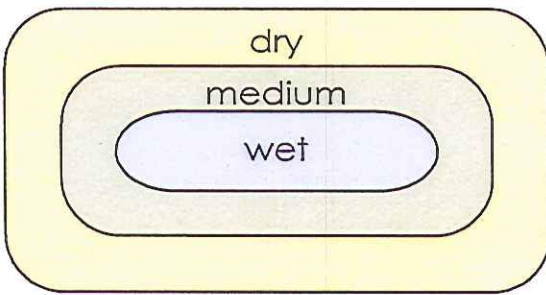
GOLDEN ALEXANDERS (Apr-Jun)
Zizia aurea



LITTLE BLUESTEM
Schizachyrium scoparium



COMMON OAK SEDGE
Carex pensylvanica



RAIN GARDEN LAYOUT

Notes:
Plants are 3' tall or less.
Follow spacing guidelines for each plant species or assume 12-18" spacing.
Gardens may require watering during the first year.
Bloom times may vary.



BLACK-EYED SUSAN (Jun-Oct)
Rudbeckia hirta



SILKY ASTER (Aug-Oct)
Aster sericeus



ZIG ZAG GOLDENROD (Aug-Oct)
Solidago flexicaulis



WILD IRIS (May-Jul)
Iris shrevei



BLUE LOBELIA (Jul-Oct)
Lobelia siphilitica



BROWN FOX SEDGE
Carex vulpinoidea

wet

www.cityofmadison.com/engineering/stormwater/raingardens.cfm



1121 Rutledge St. Butterfly Garden Plant List

Scientific Name	Common Name	Quantity	Size
Dry Plants:			
<i>Schizachyrium scoparium</i>	Little Bluestem	6	2.5" Plug
<i>Asclepias tuberosa</i>	Butterfly Weed	6	2.5" Plug
<i>Coreopsis lanceolata</i>	Lanceleaf Coreopsis	6	2.5" Plug
<i>Aquilegia canadensis</i>	Columbine	6	2.5" Plug
Medium Plants:			
<i>Allium cernuum</i>	Nodding Onion	6	2.5" Plug
<i>Sporobolus heterolepis</i>	Golden Alexanders	6	2.5" Plug
<i>Schizachyrium scoparium</i>	Prairie Dropseed	6	2.5" Plug
<i>Rudbeckia hirta</i>	Black-Eyed Susan	6	2.5" Plug
Wet Plants:			
<i>Solidago riddellii</i>	Riddell's Goldenrod	6	2.5" Plug
<i>Pycnanthemum virginianum</i>	Virginia Mountain Mint	6	2.5" Plug
<i>Tradescantia ohimensis</i>	Spiderwort	6	2.5" Plug
<i>Carex vilpinoidea</i>	Brown Fox Sedge	6	2.5" Plug



LITTLE BLUESTEM
Schizachyrium scoparium

Photo: University of Kentucky



BUTTERFLY WEED (Jun-Aug)
Asclepias tuberosa

Photo: Prairie Nursery

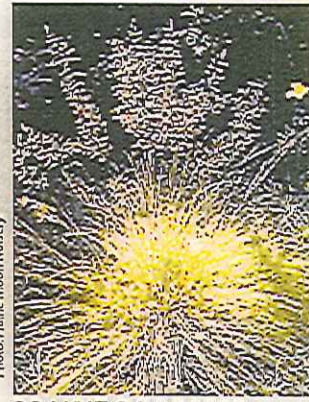
dry

medium



BLACK-EYED SUSAN (Jun-Oct)
Rudbeckia hirta

Photo: Prairie Moon Nursery



PRAIRIE DROPSEED
Sporobolus heterolepis

Photo: wildflower.org



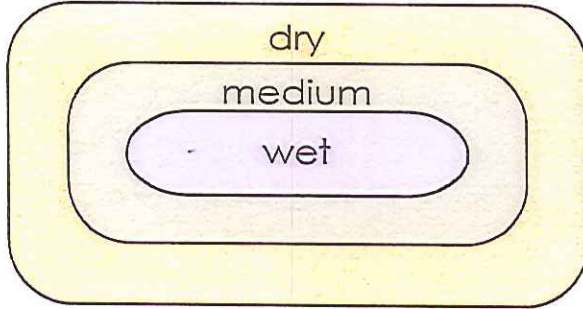
NODDING ONION (Jul-Aug)
Allium cernuum

Photo: Missouri Botanical Garden



LANCELEAF COREOPSIS (May-Aug)
Coreopsis lanceolata

Photo: Prairie Nursery



RAIN GARDEN LAYOUT

Notes:
 Plants are 3' tall or less.

Follow spacing guidelines for each plant species or assume 12-18" spacing.

Gardens may require watering during the first year.

Bloom times may vary.



MARSH PHLOX (Jun-Sep)
Phlox glaberrima interior

Photo: Missouri Botanical Garden



COLUMBINE (Apr-Jun)
Aquilegia canadensis

Photo: Prairie Nursery



RIDDELL'S GOLDENROD (Aug-Oct)
Solidago riddellii

Photo: UW-Stevens Point, Meredith Black



VIRGINIA MOUNTAIN MINT (Jun-Sep)
Pycnanthemum virginianum

Photo: UW-Arboretum



SPIDERWORT (May-Jul)
Tradescantia ohiensis

Photo: US Forest Service



BROWN FOX SEDGE
Carex vulpinoidea

Photo: Prairie Nursery

wet





PLAN NOT TO SCALE

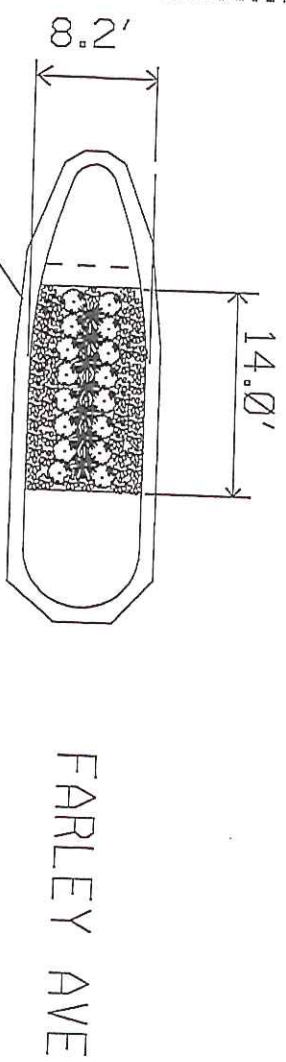
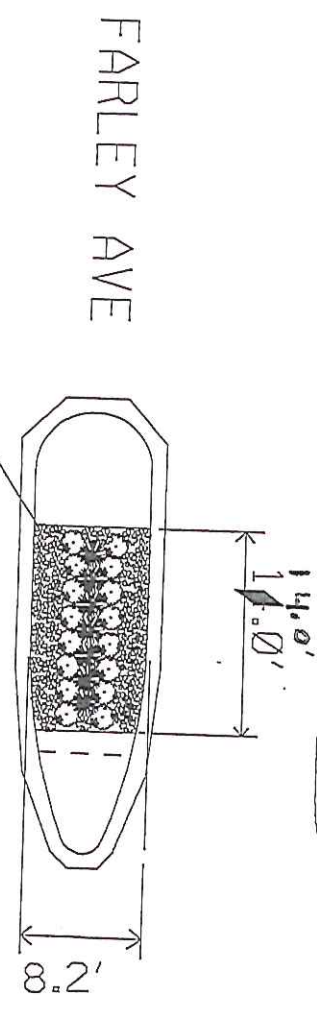
TRAFFIC CALM & PED ENHANCE - 2012 SHEET NO.
PROJECT NO. 53W1305 FA-1

FARLEY AVE. ISLANDS CITY OF MADISON

PLOT SCALE: _____

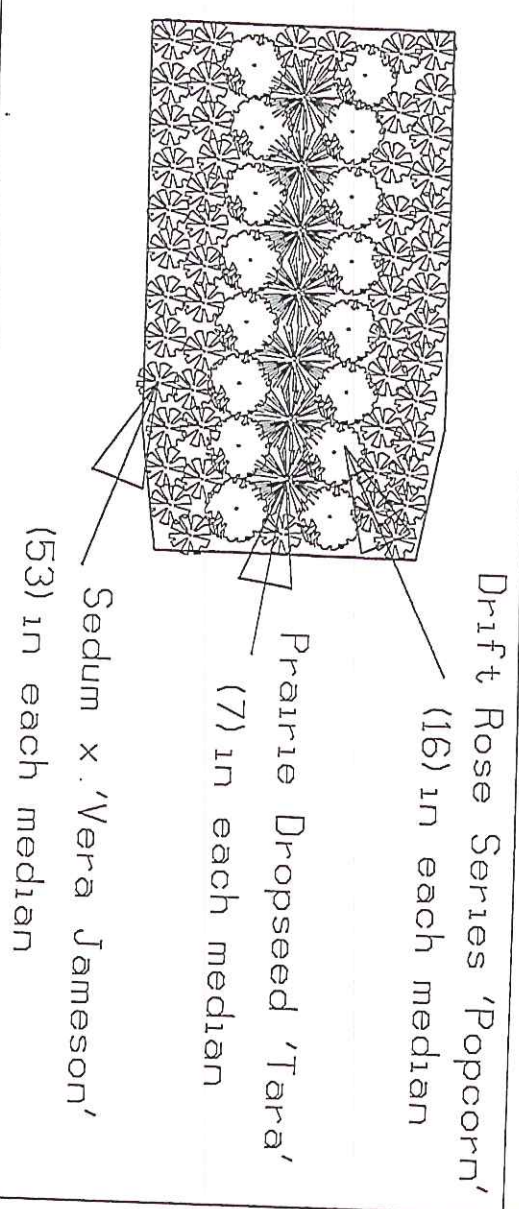
PLOT NAME: _____

REV. DATE: _____



NOTE: Contractor is responsible for three (3) instances of watering and three (3) instances of weeding after installation.
NOTE: Contractor shall install two (2) Cubic Yards of mulch (one (1) Cubic Yard 3-4" deep of mulch per median).

Typical Planting Detail Not to Scale



CHAMBERLAIN AVE

Legend and Plant Schedule

Symbol	Plant Name	Quantity	Size
	Sporobolus heterolepis 'Tara'	14	1 Gal.
	Prairie Dropseed	106	4.5" Pot
	Sedum x 'Vera Jameson'	32	1 Gal.
	Rosa 'Mejocos'		
	Drift Rose Series 'Popcorn'		