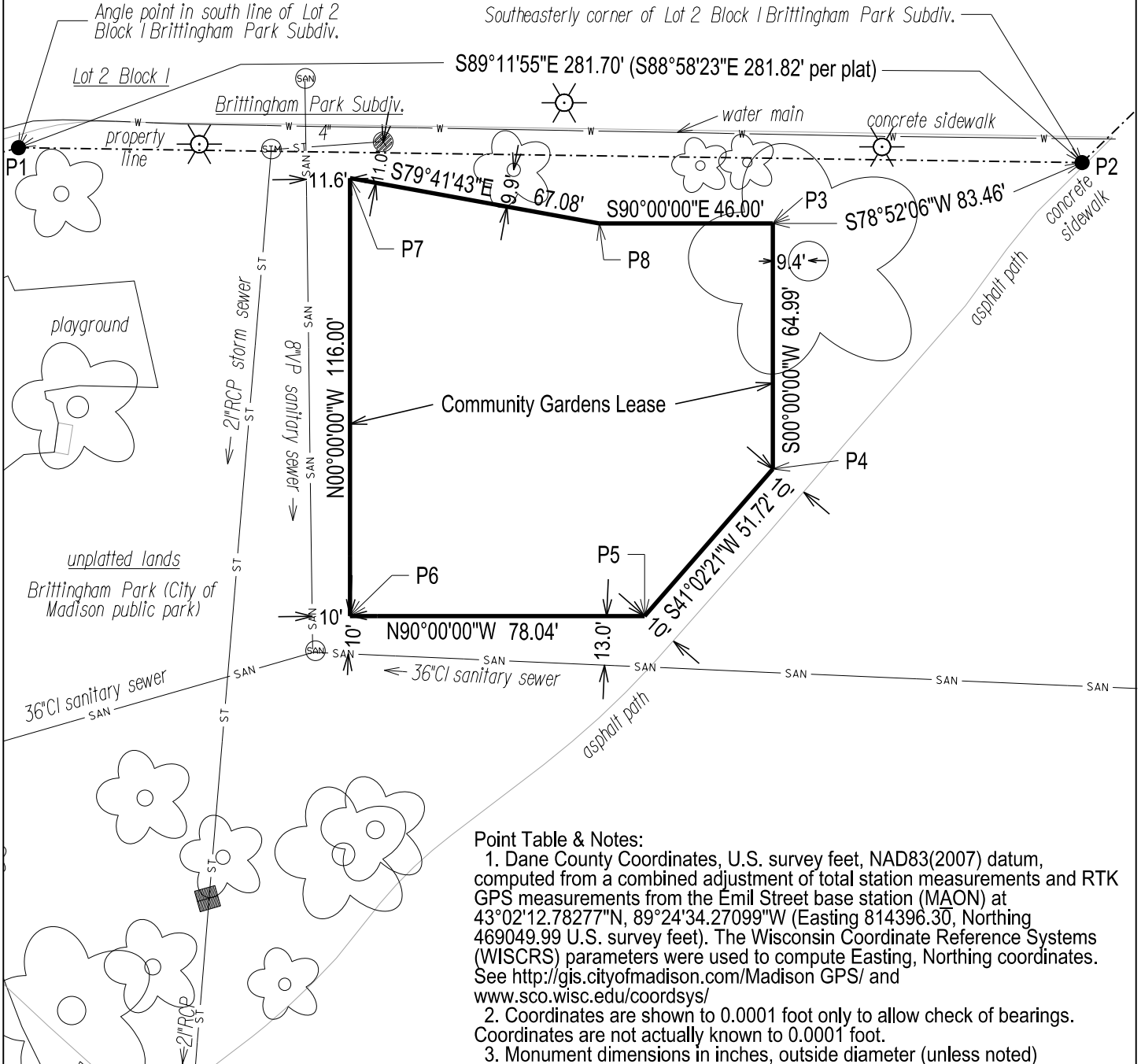


# Brittingham Park - Community Gardens Lease - Exhibit A

Located in the NE1/4 of the SW1/4 of Section 23, T7N R9E, City of Madison, Dane County, Wisconsin

**LEGAL DESCRIPTION:**

Part of the NE1/4 of the SW1/4 of Section 23, T7N R9E, City of Madison, Dane County, Wisconsin, more particularly described as follows: Commencing at the angle point in the south line of Lot 2, Block 1, Brittingham Park Subdivision; thence S89°11'55"E, 281.70 ft to the southeasterly corner of said Lot 2; thence S78°52'06"W, 83.46 feet to the point of beginning; thence S00°00'00"W, 64.99 feet; thence S41°02'21"W, 51.72 feet; thence N90°00'00"W, 78.04 feet; thence N00°00'00"W, 116.00 feet thence S79°41'43"E, 67.08 feet; thence S90°00'00"E, 46.00 feet to the point of beginning. Containing 11382 square feet or 0.2613 acres, more or less. Bearing referenced to WISCRS-Dane, NAD83(2007) Datum.



**Point Table & Notes:**

1. Dane County Coordinates, U.S. survey feet, NAD83(2007) datum, computed from a combined adjustment of total station measurements and RTK GPS measurements from the Emil Street base station (MAON) at 43°02'12.78277"N, 89°24'34.27099"W (Easting 814396.30, Northing 469049.99 U.S. survey feet). The Wisconsin Coordinate Reference Systems (WISCRS) parameters were used to compute Easting, Northing coordinates. See <http://gis.cityofmadison.com/Madison GPS/> and [www.sco.wisc.edu/coordsys/](http://www.sco.wisc.edu/coordsys/)
2. Coordinates are shown to 0.0001 foot only to allow check of bearings. Coordinates are not actually known to 0.0001 foot.
3. Monument dimensions in inches, outside diameter (unless noted)

Brittingham Park - 801 W Washington Ave  
(south of Parkview Apts, west of W Main & S Brittingham Pl.)  
Prepared Apr. 2, 2013

City of Madison  
Dept. of Public Works - Parks Div.  
City-County Building, Suite 104  
210 Martin Luther King Jr. Blvd.  
PO Box 2987  
Madison, WI 53701-2987

Graphical Scale  
0 40 ft

play **MADISON PARKS**

Pt	Northing	Easting	Monument
P1	479319.2200	817814.6800	Found 1-1/4in rod 0.2 ft below ground
P2	479315.2800	818096.3500	Found 1-1/4in rod
P3	479299.1673	818014.4613	Lease point of beginning
P4	479234.1764	818014.4613	
P5	479195.1673	817980.5042	
P6	479195.1673	817902.4613	
P7	479311.1673	817902.4613	
P8	479299.1673	817968.4613	